



COMPATIBILITY WITH PASSENGER CARS



www.kuaileshu.com

CERTIFICATES



FEATURES OF HAPPY TREE SHOCK ABSORBER

- EXCELLENT SURFACE
NO SCRATCH ON THE SURFACE
NO WELDING SLAG
SMOOTH AND DELICATE PAINTING SURFACE
SUPERB WELDING STRENGTH>30KN
- STRICT CONTROL OF THE INTERNAL PRESSURE
100% DAMPING FORCE TEST
100% INFLATION PRESSURE TEST
- ELIMINATE OIL LEAKAGE ,GAS LEAKAGE AND NOISE
GAS SHOCKS USE **NOK** OIL SEAL
WITH IMPORTED GERMANY KLUBER GREASE
- DURABILITY TESTING
OVER 4,000,000 TIMES DURABLE TEST
- ELEGANT PACKAING
5-LAYERS COLORFUL PACKING INNER BOX
5 LAYERS KRAFT PAPER PACKING CARTON



www.kuaileshu.com



ZHEJIANG HAPPY TREE SHOCK ABSORBER CO.,LTD.
 浙江快乐树减震器有限公司
 JIANGXI HAPPY TREE SHOCK ABSORBER MFG. CO., LTD.
 江西快乐树减震器制造有限公司
 HAPPY TREE MANAGEMENT CONSULTING CO., LTD
 快乐树企业管理顾问有限公司

Zhejiang **Happy Tree** Shock Absorber Co., Ltd is a manufacturer established in1985, specializing in developing and manufacturing automobile shock absorbers, equipped with advanced machinery, technology and complete laboratory facilities. There are over 20 R&D personnel, more than 8000 varieties shock absorbers have been developed. We are **OE supplier** for BAW, and exports to over 50 countries and regions to Southeast Asia, Europe, Middle East, America etc. Our own brand KALASO **KALASO** is well known both at home and abroad. **sole agents** can be found in many countries. We adhere to "people-oriented, happy creation" concept. While pursuing **high standards, high efficiency and high quality**, we never forget our original intention to create a comfortable, pleasant and superior manufacturing environment. We pay highly attention to environmental protection, energy conservation and emission reduction.



www.kuaileshu.com

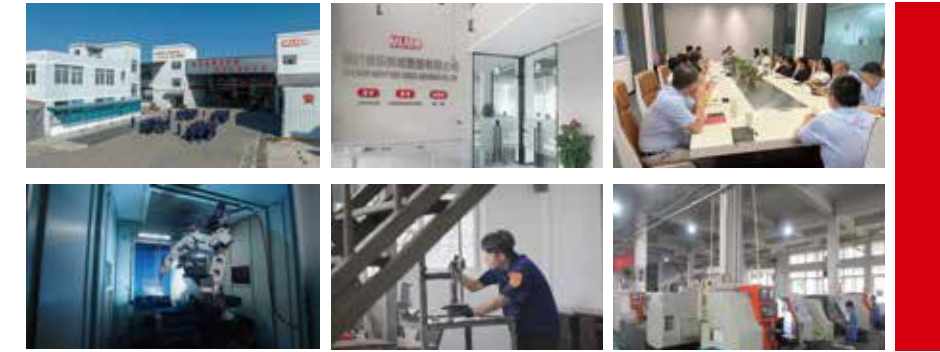
10 MAJOR COMMITTEES

- 01 安全环境管理委员会
Safety and Environmental Management Committee
- 02 新品开发委员会
New Product Development Committee
- 03 专案改善管理委员会
Project Improvement Committee
- 04 成本管理委员会
Cost Management Committee
- 05 TPM管理委员会
TPM Management Committee
(Total Productive Maintenance)
- 06 6S管理委员会
6S Management Committee
- 07 生活管理委员会
Life Management Committee
- 08 ISO管理委员会
ISO Management Committee
- 09 教育培训管理委员会
Education and Training Management Committee
- 10 绩效管理委员会
Performance Management Committee

MAINLY EXPORT COUNTRIES

GERMANY 德国	FRANCE 法国	POLAND 波兰	LITHUANIA *立陶宛	RUSSIA 俄罗斯	MOLDOVA 摩尔多瓦
SERBIA 塞尔维亚	KAZAKHSTAN 哈萨克斯坦	UZBEKISTAN *乌兹别克斯坦	TURKMENISTAN 土库曼斯坦	KYRGYZSTAN 吉尔吉斯斯坦	ARMENIA 亚美尼亚
AZERBAIJAN 阿塞拜疆	UAE 阿拉伯联合酋长国	IRAN 伊朗	SAUDI ARABIA 沙特阿拉伯	YEMEN *也门	JORDAN *约旦
OMAN 阿曼	SYRIAN ARAB 叙利亚	SUDAN *苏丹	SOUTH AFRICA 南非	KOREA *韩国	CAMBODIA *柬埔寨
MALAYSIA *马来西亚	INDONESIA 印度尼西亚	PHILIPPINES *菲律宾	VIETNAM 越南	THAILAND 泰国	MYANMAR 缅甸
PAKISTAN 巴基斯坦	MEXICO 墨西哥	CHILE 智利	PERU 秘鲁	PANAMA 巴拿马	COSTA RICA 哥斯达黎加
COLOMBIA 哥伦比亚	VENEZUELA 委内瑞拉	ECUADOR 厄瓜多尔	BOLIVIA 玻利维亚	PARAGUAY 巴拉圭	AUSTRALIA 澳大利亚
IRAQ *伊拉克	MOROCCO *摩洛哥	BANGLADESH *孟加拉	ALGERIA *阿尔及利亚	PUERTO RICO 波多黎各	TRINIDAD AND TOBAGO 特立尼达和多巴哥

COMPANY PHOTO GALLERY



2024 Set up management consulting company to serve supply chain

2023 Independent the sales department to form a trading company

2022 Invest a new factory in Jiangxi province

2017 Move to Lishui, Zhejiang

1985 Set up the company

1993 Major in shock absorber

2000 Transformed into a limited company

2003 Move to Feiyun, Ruian

2010 Move to Tangxia, Ruian

2016 Planning for future

浙江省丽水市莲都区丽沙路11号
No.11, Lisha road, Shuige Economical Development Zone,
Lishui City, Zhejiang, China

E-MAIL:
kalaso@kuaileshu.com

www.kuaileshu.com



www.kuaileshu.com
kalaso@kuaileshu.com

SINCE 1985

