

WANPU

OCEANS APART  
PURSUING TOGETHER

2024



Room 902, Tower B, Van Metropolis Building,  
No.35 Tangyan Road, Xi'an, China

TEL: +86 029 8881 5624 FAX: +86 029 88815624  
E-mail: alex.autoway@gmail.com  
Xi'an Wanpu Import And Export Trading Co.,Ltd

**WANPU**



**EV CHARGING  
CABLE**



### CS84

Operation voltage:110-250V  
Pin material:Copper Alloy,Sliver plating  
Length:5M

Power(option):  
16A/1 Phase 3.5KW  
32A/1 Phase 7KW  
16A/3 Phase 11KW  
32A/3 Phase 22KW



### CS84T

Operation voltage:AC 240V/DC 500V  
Pin material:Copper Alloy,Sliver plating  
Length:5M

Power(option):  
16A/1 Phase 3.6KW  
32A/1 Phase 7.2KW  
40A/1 Phase 9.6KW  
48A/1 Phase 11KW



### CS26D

IEC 62196 type 2 to type 2  
Dust proof cap made by silicon,Attached on tail  
TPU jacket for lifetime protection  
Model No.and cable specification:  
3 phase,32A,480V,22KW  
Each side keep 0.5m length,rest spiral  
Spiral ratio:0.25(25%);  
Workable length ratio:0.5(50%)

Power(option):  
16A/1 Phase 3.5KW  
32A/1 Phase 7KW  
16A/3 Phase 11KW  
32A/1 Phase 22KW



### T02C-3.5KW

IEC 62196 type 2 to type 2  
Dust proof cap made by silicon,Attached on tail  
TPU jacket  
Model No.and cable specification:  
1 phase,32A,7KW  
Cable length:5M

Power(option):  
16A/1 Phase 3.5KW  
32A/1 Phase 7KW  
16A/3 Phase 11KW  
32A/1 Phase 22KW



### T02T

Operation voltage:110-240V  
Pin material:Copper Alloy,Sliver plating  
Length:5M

Power(option):  
48A/1Phase 11KW  
7.5M



### CS20A

Rated voltage:AC200-250V  
 Rated current:32A/1 Phase  
 Rated power:7kw

Power(option):  
 8-16A/1 Phase 3.5KW  
 8-32A/1 Phase 7KW



### CS71T

Operation voltage:110-240V  
 Rate frequency:3.6KW  
 Shell material: PC  
 Length:7.5M  
 Leakage protection:Type A RCD

Power(option):  
 16A/1 Phase 9.6KW



### CS80

Voltage:240V/400V  
 Screen:2.8-inch LCD display screen  
 Length:5M  
 Optional Bluetooth wifi two in one module

Power(option):  
 16A/1 Phase 3.5KW  
 32A/1 Phase 7KW  
 16A/3 Phase 11KW  
 32A/3 Phase 22KW

### CS73

Operation voltage:AC 380-400V  
 Rate frequency:50Hz  
 Shell material:PC  
 Length:5M  
 Leakage protection:Type A RCD+DC 6mA

Power(option):  
 8-16A/3 Phase 11KW  
 8-32A/3 Phase 22KW



### CS81

Voltage:240V  
 Screen:2.8-inch LCD display screen  
 Length:5M  
 Function:One click lid opening  
 Optional Bluetooth wifi two in one module

Power(option):  
 16A/1 Phase 3.84KW  
 32A/1 Phase 7.68KW  
 40A/1 Phase 9.6KW



### CS82

Voltage:240V  
 Screen:2.8-inch LCD display screen  
 Length:5M  
 Optional Bluetooth wifi two in one module

Power(option):  
 16A/1 Phase 3.84KW  
 32A/1 Phase 7.68KW  
 40A/1 Phase 9.6KW

### CS72

Operation voltage:110-240V  
 Shell material:PC  
 Length:7.5M

Power(option):  
 16A/1 Phase 3.5KW  
 32A/1 Phase 7KW  
 16A/1 Phase 9.6KW  
 16A/1 Phase 3.6KW  
 35A/1 Phase 7.2KW  
 40A/1 Phase 9.6KW





### CS34

3.5kw Portable EV Charge  
 Standed:IEC 61851-12010 and IEC62752-2018  
 Rated Voltage:230 VAC  
 Rated Current:16A  
 Working Temperature:-20 C -50 C

Power(option):  
 8-16A/1 Phase 3.5KW  
 8-32A/1 Phase 7KW



### CS71

Operation voltage:AC110-250V  
 Rate frequency:50Hz/60Hz  
 Shell material:PC  
 Length:5M  
 Leakage protection:Type A RCD

Power(option):  
 16A/1 Phase 3.6KW



### CS75

Voltage:230V/110-240V  
 Rate frequency:50/60Hz  
 Length:5M  
 Leakage protection:Type A RCD+DC 6mA

Power(option):  
 16A/1 Phase 3.5KW      32A/1 Phase 7KW  
 16A/1 Phase 1.92KW    16A/1 Phase 3.84KW  
 32A/1 Phase 7.4KW     40A/1 Phase 9.6KW  
 50A/1 Phase 11.5KW



### CS24A

EV charging cable TPU jacket  
 Cable length:5M  
 2.8"LCD screen&LED indicator(B/G/R)  
 RCD protection:30mA AC  
 8-16A with BS/Schuko power plug  
 Sheel by thermoplastic PC94V-0

Power(option):  
 16A/1 Phase 3.5KW  
 32A/1 Phase 7KW  
 16A/3 Phase 11KW  
 32A/3 Phase 22KW



### CS78

Rated Voltage:80-275V  
 LCD digital display screen (2.4 inch)  
 TypeA:30mA for AC faults/TypeA+6:  
 30mA for AC and 6mA for DC faults  
 Length:5M

Power(option):  
 16A/1 Phase 3.5KW    32A/1 Phase 7KW  
 40A/1 Phase 9.6KW   13A/1 Phase 2.86KW  
 16A/1 Phase 3.5KW    32A/1 Phase 7KW



### CS39A

Rated working current:8A,10A,13A,16A  
 Working voltage:110V-220V  
 Power:3.5kw  
 Insulation class:500V DC&10MΩminimum  
 Seal:rubber or silicone pressure resistance:3200V AC  
 Vibration resistance:conform to JDQ5.3.3.6.1.1-53.36.1.2  
 Contact impedance:0.5 mΩ Max

Power(option):  
 8-16A/1 Phase 3.5KW  
 8-32A/1 Phase 7KW



### CS76

Voltage:230V/110-240V  
 Rate frequency:50/60Hz  
 Length:5M  
 Leakage protection:Type A RCD+DC 6mA

Power(option):  
 16A/1 Phase 3.5KW      32A/1 Phase 7KW  
 16A/1 Phase 11KW      32A/1 Phase 22KW  
 16A/1 Phase 1.92KW    16A/1 Phase 3.84KW  
 32A/1 Phase 7.4KW     40A/1 Phase 9.6KW  
 50A/1 Phase 11.5KW



### CS70

Rated Voltage:80-275V  
 LCD digital display screen (2.4 inch)  
 TypeA:30mA for AC faults/TypeA+6:3  
 0mA for AC and 6mA for DC faults  
 Length:5M

Power(option):  
 16A/1 Phase 3.5KW    32A/1 Phase 7KW  
 40A/1 Phase 9.6KW   13A/1 Phase 2.86KW  
 16A/1 Phase 3.5KW    32A/1 Phase 7KW

### CS32

Power:7kw  
 Gun wire:5M  
 With 4.3 inch color screen  
 Input rating:240Vac,single phase,32A maximum,50/60Hz  
 Number of phase/wire:L,N and PE  
 Internal RCD:DC 6MA RCD Function  
 Output rating:240Vac,single phase,32A maximum,50/60Hz  
 Charger interface:IEC62196-2 Type 1 or Type2 tethered plug  
 Over current:Support  
 Under/over voltage:Support  
 Short circuit:Support  
 Over temperature:Support  
 Ground fault:Support  
 Plug-out protection:Support  
 Status indicators:There LED indicate,POWER/Charging/Fault  
 Buttons:Emergency stop button  
 User Authentication; RFID

European Standard:  
 32A/1 Phase 7KW  
 16A/3 Phase 11KW  
 32A/3 Phase 22KW  
 American Standard:  
 32A/1 Phase 22KW  
 40A/48A 9/11kw 1 Phase

### CS33

Power:7kw  
 Gun wire:5M  
 Input I/V:Level II 32A/AC240V+20%  
 Input frequency:50Hz-60Hz  
 Number of input:1  
 Output I/V:Level II 32A/AC240V+20%  
 Maximum:7.2KW  
 Input cable:3x10AWG  
 Charging gun:250V/32A

European Standard:  
 32A/1 Phase 7KW  
 16A/3 Phase 11KW  
 32A/3 Phase 22KW  
 American Standard:  
 32A/7KW 1 Phase  
 40A/48A 9/11kw 1 Phase



### CS79

Voltage:AC 220-250V/AC 380-480V/AC 110-240V  
 User Interface:LCD Display (4.3 inch) + LED Indicator  
 Length:5M  
 Ground Fault Detection:30mA for AC AND 6mA for DC faults (Type A + 6)  
 Authentication:Plug and play / NFC Card / APP / OCPP  
 (4 versions For Option)

Power(option):  
 32A/1 Phase 7KW  
 16A/3 Phase 11KW  
 32A/3 Phase 22KW  
 40A/1 Phase 9.6KW  
 48A/1 Phase 11.5KW



### CS74

Operation voltage:AC 240V  
 Rate frequency:60Hz  
 Shell material: PC  
 Length:7.5M  
 Leakage protection:CCID 20  
 Status indication:LED status indicator  
 Function:WIFI+Bluetooth,Phone APP  
 Energy Star

Power(option):  
 16A/1 Phase 3.5KW  
 32A/1 Phase 7KW  
 16A/3 Phase 11KW  
 32A/1 Phase 22KW





### CS30

Rated voltage:AC250V  
 Rated current:32A/1 Phase  
 Rated power:7KW  
 Boot mode:Card switch  
 Protection grade:IP54  
 CE ROHS FCC UKCA TUV  
 Rated voltage:AC250V  
 Rated current:32A/1 Phase  
 Rated power:7KW

European Standard:  
 32A/1 Phase 7KW  
 16A/3 Phase 11KW  
 32A/3 Phase 22KW  
 American Standard:  
 32A/1 Phase 7KW  
 40A/48A 9/11kw 1 Phase



### CS21A

Rated voltage:AC250V  
 Rated current:32A/1 Phase  
 Rated power:7KW  
 Start mode:Card switch;APP

European Standard:  
 32A/1 Phase 7KW  
 16A/3 Phase 11KW  
 32A/3 Phase 22KW  
 American Standard:  
 32A/7KW 1 Phase



### CS31

Rated voltage:AC250V  
 Rated current:32A/1 Phase  
 Rated power:7KW  
 Boot mode:Card switch

European Standard:  
 32A/1 Phase 7KW  
 16A/3 Phase 11KW  
 32A/3 Phase 22KW  
 American Standard:  
 32A/1 Phase 7KW  
 40A/48A 9/11kw 1 Phase



### CS77

Voltage:240V/230V/380V  
Rate frequency:50/60Hz  
Length:5M  
Leakage protection:Type A RCD+DC 6mA

Power(option):  
32A/1 Phase 7.4KW  
40A/1 Phase 9.6KW  
50A/1 Phase 11.5KW  
32A/1 Phase 7KW  
16A/1 Phase 11KW  
32A/3 Phase 22KW



### CS83

Voltage: 240V  
Length: 5M  
Swipe card activation  
Optional Bluetooth wifi two in one module  
Optional with screen (round bottle, square screen)  
Optional operational models (4G/Ethernet)

Power(option):  
16A/1 Phase 3.84KW  
32A/1 Phase 7.68KW  
40A/3 Phase 9.6KW  
48A/1 Phase 11.52KW

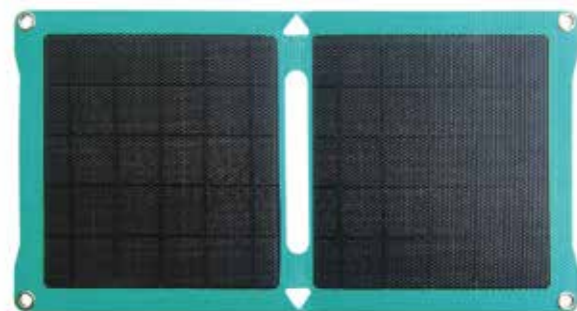






### E826

Monocrystalline-ETFE  
 Peak power Pmax:60W  
 Open circuit voltage:Voc(V)24V  
 Short circuit current:Isc(A):3.3A  
 Folding and steaming size:515±10×415±5×30mm  
 Expanded size:830±10×515mm



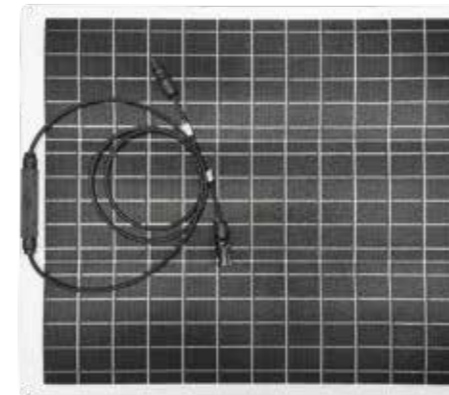
### E831

Black integrated lamination  
 Peak power Pmax:15W  
 Open circuit voltage:Voc (V) 7V  
 Short circuit current:Isc (A):2.8A  
 Folding size:202±3×290±3×20±3mm  
 Unfolded size:403±6×290±3mm



### E902

Solar panels  
 Power: 5W/6V  
 Android Connection Cable  
 Bulb  
 White LED quantity: 12 light bulbs  
 Lithium battery capacity: 800mA/3.7V



### E832

18V 50W  
 Single grade silicon  
 Battery cells  
 Flexible board  
 Junction box



### E834

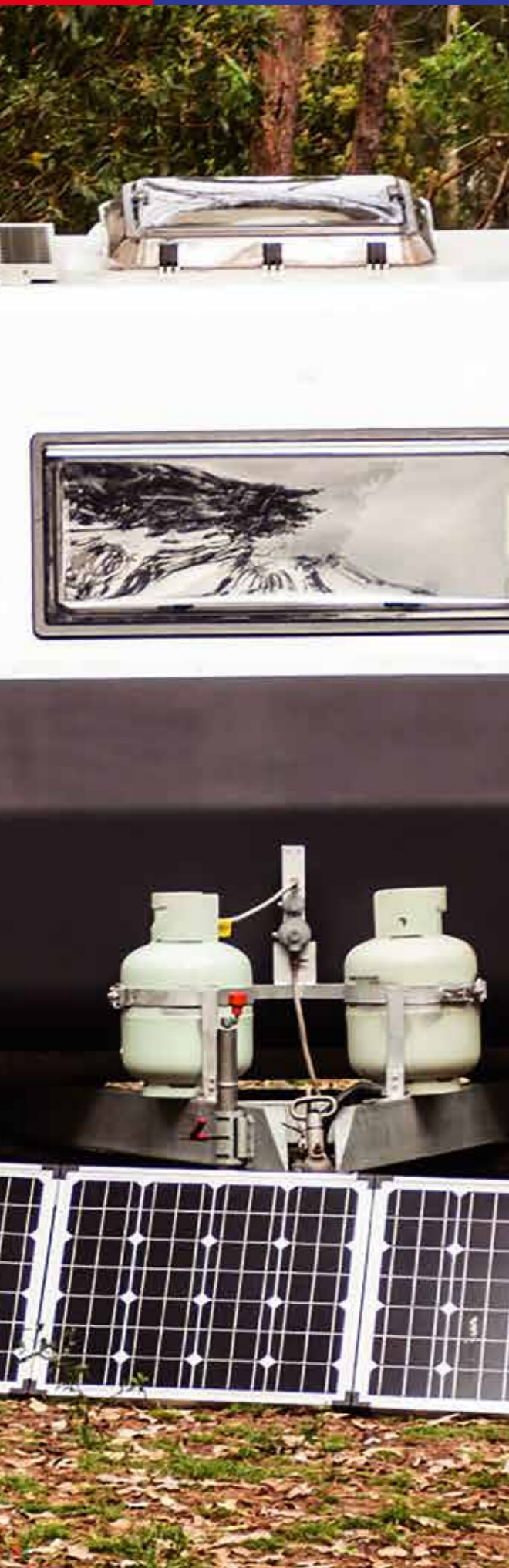
50W 18V  
 Single product silicon battery cells  
 glass  
 Junction box  
 Aluminum alloy frame  
 Net weight 3.6KG



### E901

Material: ABS shell and electrical components  
 Size: 13.5 x 11.5 x 8 CM  
 Charging cable length: 1.25 m  
 Voltage: 12V  
 Power: 20W





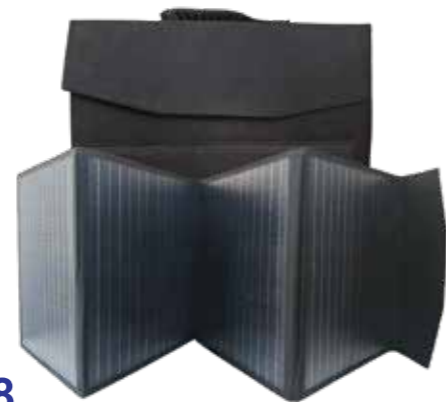
**E904**

Maximum power (maximum): 60W  
 Maximum power supply voltage (Vmp): 18V  
 Maximum power current (mp): 2.77A



**E860-100W**

ETFE  
 Power:100W  
 Working voltage:12V



**E818**

Material: canvas+pet  
 Power:100W/150W  
 Working voltage:12V



**E900**

Solar panel kit  
 Material: PET+polycrystalline silicon battery  
 Size: 35x125 cm/13.6 x 4.9 inches  
 Output: 12V

Solar controller  
 Material: ABS+PC  
 Size: 11.5 x 6 x 2.2CM  
 Rated voltage: 12V24V  
 Rated current: 10A



**E903**

Solar panels  
 Power: 5W  
 Input voltage: DC 5V  
 Solar panel size: 140x130mm  
 LED chip: 2835 SMD



**E816**

Voltage: DC 12V/24V  
 Display: LCD screen  
 Self use:<10MA  
 Overcharge protection: 14.4V/28.8V  
 Overcharge float charging: 13.7V/27.4V  
 Charging recovery voltage: 12.6V/25.2V  
 Overdischarge protection: 10.7V/21.4V  
 Discharge recovery: 12.6V/25.2V  
 Dual USB output: 5V/2A (for charging phones, iPads, etc.)  
 12V suitable for 18V solar panels,  
 24V suitable for 36V solar panels



**E815**

CurrBattery voltage: 12V/24V/36V/48V automatic  
 Charging current: 100A  
 Maximum photovoltaic input power: 1200W Maximum solar input (Voc): 15-25V (12V battery)  
 Maximum photovoltaic input power: 2400W Maximum solar input (Voc): 30-50V (24V battery)  
 Maximum photovoltaic input power: 3600W Maximum solar input (Voc): 45-75V (36V battery)  
 Maximum photovoltaic input power: 4800W Maximum solar input (Voc): 60-100V (48V battery)ent:100A



### C585A-3.5M/5.5M/7.5M

Mains version  
 3.5m aluminum alloy telescopic rod  
 Photovoltaic brush  
 Drive motor kit  
 Water control box (including 100W water pump)  
 220V power converter  
 8 m extension wire  
 1.3 m pumping pipe  
 Accessories: manual, Certificate, yellow water control valve, oil seal, elastic screw + screwdriver, plastic nut, hex, cable tie

### C585B-3.5M/5.5M/7.5M

Mains version  
 3.5m aluminum alloy telescopic rod  
 Photovoltaic brush  
 Drive motor kit  
 Water control box (including 100W water pump)  
 220V power converter  
 8 m extension wire  
 1.3 m pumping pipe  
 Accessories: manual, Certificate, yellow water control valve, oil seal, elastic screw + screwdriver, plastic nut, hex, cable tie  
**Brushless machine**

### C585C-3.5M/5.5M/7.5M

Lithium battery  
 3.5m aluminum alloy telescopic rod  
 Photovoltaic brush  
 Drive motor kit  
 8 m water wire  
 Electric control spring wire  
 1pc lithium battery pack  
 1pc lithium battery charger  
 1pc backpack  
 Accessories: manual, Certificate, yellow water control valve, oil seal, elastic screw + screwdriver, plastic nut, hex, cable tie

### C585D-3.5M/5.5M/7.5M

Lithium battery  
 3.5m aluminum alloy telescopic rod  
 Photovoltaic brush  
 Drive motor kit  
 8 m water wire  
 Electric control spring wire  
 1pc lithium battery pack  
 1pc lithium battery charger  
 1pc backpack  
 Accessories: manual, Certificate, yellow water control valve, oil seal, elastic screw + screwdriver, plastic nut, hex, cable tie  
**Brushless machine**

### C585E-3.5M/5.5M/7.5M

Mains version + lithium version  
 3.5m aluminum alloy telescopic rod  
 Photovoltaic brush  
 Drive motor kit  
 Water control box (including 100W water pump)  
 220V power converter  
 8 m extension wire  
 1.3 m pumping pipe  
 Power supply cable  
 Electric control spring wire  
 Lithium battery pack  
 Lithium battery charger  
 Backpack  
 Accessories: manual, Certificate, yellow water control valve, oil seal, elastic screw + screwdriver, plastic nut, hex, cable tie

### C585F-3.5M/5.5M/7.5M

Mains version + lithium version  
 3.5m aluminum alloy telescopic rod  
 Photovoltaic brush  
 Drive motor kit  
 Water control box (including 100W water pump)  
 220V power converter  
 8 m extension wire  
 1.3 m pumping pipe  
 Power supply cable  
 Electric control spring wire  
 Lithium battery pack  
 Lithium battery charger  
 Backpack  
 Accessories: manual, Certificate, yellow water control valve, oil seal, elastic screw + screwdriver, plastic nut, hex, cable tie  
**Brushless machine**



### C586A-3.5M/5.5M/7.5M

Mains version  
 3.5m aluminum alloy telescopic rod  
 8 m water wire  
 2pcs photovoltaic brushes  
 2pcs drive motor kit  
 T-rod connection kit  
 220v power converter  
 8 m extension wire  
 Accessories: manual, Certificate, oil seal, elastic screw + screwdriver, water control valve connector, plastic nut, hex, cable tie

### C586C-3.5M/5.5M/7.5M

Lithium battery  
 3.5m aluminum alloy telescopic rod  
 8 m water wire  
 2pcs photovoltaic brushes  
 2pcs drive motor kit  
 T-rod connection kit  
 Electric control spring wire  
 1pc lithium battery pack  
 1pc lithium battery charger  
 1pc backpack  
 Accessories: manual, certificate, oil seal, water control valve connector, elastic screw + screwdriver, plastic nut, hex, cable tie

### C586E-3.5M/5.5M/7.5M

Mains version + lithium version  
 3.5m aluminum alloy telescopic rod  
 8 meters water wire,  
 2pcs photovoltaic brushes  
 2pcs drive motor kit  
 T-rod connection kit  
 Electric control spring wire  
 1pc lithium battery pack  
 1pc lithium battery charger  
 1pc backpack  
 220v power converter  
 8 m extension wire  
 Accessories: manual, Certificate, oil seal, elastic screw + screwdriver, plastic nut, hex, cable tie

### C586B-3.5M/5.5M/7.5M

Mains version  
 3.5m aluminum alloy telescopic rod  
 8 m water wire  
 2pcs photovoltaic brushes  
 2pcs drive motor kit  
 T-rod connection kit  
 220v power converter  
 8 m extension wire  
 Accessories: manual, Certificate, oil seal, elastic screw + screwdriver, water control valve connector, plastic nut, hex, cable tie  
**Brushless machine**

### C586D-3.5M/5.5M/7.5M

Lithium battery  
 3.5m aluminum alloy telescopic rod  
 8 m water wire  
 2pcs photovoltaic brushes  
 2pcs drive motor kit  
 T-rod connection kit  
 Electric control spring wire  
 1pc lithium battery pack  
 1pc lithium battery charger  
 1pc backpack  
 Accessories: manual, certificate, oil seal, water control valve connector, elastic screw + screwdriver, plastic nut, hex, cable tie  
**Brushless machine**

### C586F-3.5M/5.5M/7.5M

Mains version + lithium version  
 3.5m aluminum alloy telescopic rod  
 8 meters water wire,  
 2pcs photovoltaic brushes  
 2pcs drive motor kit  
 T-rod connection kit  
 Electric control spring wire  
 1pc lithium battery pack  
 1pc lithium battery charger  
 1pc backpack  
 220v power converter  
 8 m extension wire  
 Accessories: manual, Certificate, oil seal, elastic screw + screwdriver, plastic nut, hex, cable tie  
**Brushless machine**





### C581A-3.5M/5.5M/7.5M

#### Mains version

3.5m aluminum alloy telescopic rod  
 1pc photovoltaic special rolling brush head  
 Drive motor kit  
 220V power converter  
 8 m extension wire  
 Accessories: manual, Certificate,  
 yellow water control valve, oil seal,  
 elastic screw + screwdriver, plastic nut, hex, cable tie

### C581C-3.5M/5.5M/7.5M

#### Lithium battery

3.5m aluminum alloy telescopic rod  
 1pc photovoltaic special rolling brush head  
 Drive motor kit  
 8 m water wire  
 Electric control spring wire  
 1pc lithium battery pack  
 1pc lithium battery charger  
 1pc backpack  
 Accessories: manual, Certificate,  
 yellow water control valve, oil seal,  
 elastic screw + screwdriver, plastic nut, hex, cable tie

### C581E-3.5M/5.5M/7.5M

#### Mains version + lithium version

3.5m aluminum alloy telescopic rod  
 1pc photovoltaic special rolling brush head  
 Drive motor kit  
 220V power converter  
 8 m extension wire  
 Power supply cable  
 Electric control spring wire  
 1pc lithium battery pack  
 Lithium battery charger  
 1pc backpack  
 Accessories: manual, Certificate,  
 yellow water control valve, oil seal,  
 elastic screw + screwdriver, plastic nut, hex, cable tie

### C581B-3.5M/5.5M/7.5M

#### Mains version

5.5m aluminum alloy telescopic rod  
 1pc photovoltaic special rolling brush head  
 Drive motor kit  
 220V power converter  
 8 m extension wire  
 Accessories: manual, Certificate,  
 yellow water control valve, oil seal,  
 elastic screw + screwdriver, plastic nut, hex, cable tie  
**Brushless machine**

### C581D-3.5M/5.5M/7.5M

#### Lithium battery

3.5m aluminum alloy telescopic rod  
 1pc photovoltaic special rolling brush head  
 Drive motor kit  
 8 m water wire  
 Electric control spring wire  
 1pc lithium battery pack  
 1pc lithium battery charger  
 1pc backpack  
 Accessories: manual, Certificate,  
 yellow water control valve, oil seal,  
 elastic screw + screwdriver, plastic nut, hex, cable tie  
**Brushless machine**

### C581F-3.5M/5.5M/7.5M

#### Mains version + lithium version

3.5m aluminum alloy telescopic rod  
 1pc photovoltaic special rolling brush head  
 Drive motor kit  
 220V power converter  
 8 m extension wire  
 Power supply cable  
 Electric control spring wire  
 1pc lithium battery pack  
 Lithium battery charger  
 1pc backpack  
 Accessories: manual, Certificate,  
 yellow water control valve, oil seal,  
 elastic screw + screwdriver, plastic nut, hex, cable tie  
**Brushless machine**





## E2130

Input: 29V/2A  
 Output:  
 Fast charging (5V/3A; 9V/2A; 12V/1.5A)  
 12V/10A  
 12V/24V truck start  
 Temperature range for use: -40 °C~60 °C  
 Recycling:>1000 times



## E2131

Capacity: 36400mAh (135Wh)  
 Peak current: 2500A  
 Input: USB-C (5V/2A; 9V/2A); DC29V/5A  
 Output:  
 5V/2.4A; 5V/1A  
 12V/24V car start  
 Operating temperature range: -40 °C~60 °C  
 Recycling: > 2000 times



## EP094

Applicable models: 12/24V vehicles  
 Starting current: 3000A (12V)/1500A (24V)  
 Type-C output: PD 45W  
 Charging method: DC19V 3A  
 USB output port: QC 18W  
 Peak starting current: 6000A  
 Battery capacity: 3.7V 64000mAh



## P0161

Battery energy:537.6Wh  
 Number of cells:32700 lithium iron phosphate battery/  
 6000mAh x 28/7S4P  
 Cell capacity:22.4x24Ah  
 Product specification:267x170x220mm  
 Color:black grey  
 AC adapter input:90W/19V/4.74A(DC5525)  
 Input DC5525:90W  
 Solar input:MPPT,13V-22V/5A(MAX)  
 Output Type-C1:PD protocol:5V/9V/12V/15V/20V±5%  
 Output Type-C2:PD protocol:5V/9V/12V/15V/20V±5%  
 Output USB-A1:USB output 5-9V/2V(QC3.0)18-24W  
 Output USB-A2:USB output 5-9V/2V(QC3.0)18-24W  
 DC5521+cigarette lighter output:output 12.8V/10A(10.5A Max)x1  
 Output 12.8V/10A(10.5A Max)x2  
 AC outputx3x700W continuous power output



## P0162

Battery :1210Wh(22.4V 54Ah 378000mAh)  
 Cycle life:3500 times  
 USB Output:3x5V/2.4A 25W maximum  
 USB-C Output:1xPD&QC3.0  
 5V/3A,9V/3A,12V/3A,15V/3A,20V/3A 60W maximum  
 Cigar lighter output:1x12V 10A 120W maximum  
 AC output:220-240V/50Hz 60Hz 1500W  
 Peak power:2500W  
 Input municipal charging 27V8A 200W maximum(7909)/  
 vehicle charging/solar energy 15V-24V 8A  
 Lighting:2W LED  
 Charging temperature:0 °C-40 °C  
 Discharge temperature:-10 °C-40 °C



## P023

Battery capacity:486Wh(135000mAh,6S9P 3.7V)  
 Input charging  
 Adapter:19V 3.75A about 8h  
 Photovoltaic panel:80W-120W 18-22V  
 AC Output:Sine wave output 110V/220V 60Hz/50Hz  
 USB Output:3xUSB 5V/2.4A Max 2xUSB 5-12V/2A QC3.0 18W  
 TYPE-C 1(60W)  
 TYPE-C 2(27W)  
 AC Power:500W/750W Max  
 DC output:12V/10A(10A Max)  
 LED Light:7W LED light/SOS/Blink mode  
 Working temperature:-10 °C-40 °C  
 Cycle life:>500times



## P022

Battery capacity:296Wh(80000mAh,4S8P 3.7V)  
 Input charging  
 Adapter:19V 3A about 8h  
 Photovoltaic panel:18-22V  
 AC Output:Sine wave output 110V/220V 60Hz/50Hz  
 USB Output:3xUSB 5V/2.1A Max 2xUSB 5-9V/QC3.0  
 TYPE-C 1 (PD18W)  
 TYPE-C 2 (PD27W)  
 AC Power:300W/450W Max  
 DC output:12-16.5V/10A(15A Max)  
 LED Light:4W LED light/SOS/Blink mode  
 Working temperature:-10 °C-40 °C  
 Cycle life:>500times



**P0163**

Battery:308Wh(12.8V,24Ah,96000mAh)  
 Cycle life:3500 times  
 USB output:2xQC3.0 5V/3A,9V/2A,12V/2A 24W maximum  
 Simultaneous use of two ports is 5V/2.4A 12W maximum  
 USB-C output:1xPD&QC3.0  
 5V/3A,9V/3A,15V/3A,20V/2.25A 45W maximum  
 Cigar lighter output:1x12V/10A 120W maximum  
 AC output:220V-240V/50Hz,60Hz 300W  
 peak power 450W/600W peak power 900W  
 Input:5V/4A 60W(7909)/car charging/  
 solar panel charging 12V-24V/4A  
 Lighting:3LEDs  
 Charging temperature:0 C-40 C  
 Discharge temperature:-10 C-40 C



**P023**

Battery capacity:155Wh(42000mAh,3S7P 3.7V)  
 Input charging  
 Adapter:15V 2A about 7-8h  
 Photovoltaic panel:18-22V  
 AC Output:Modified sine output 110V/220V 60Hz/50Hz  
 USB Output:2xUSB 5V/2.1A Max  
 1xUSB 5-9V/2A QC3.0  
 TYPE-C output:PD18W  
 AC Power:100W/150W Max  
 DC output:9-1 2.5A/10A(15A Max)  
 LED Light:4W LED light/SOS/Blink mode  
 Working temperature:-10 C-40 C  
 Cycle life:>500times



**P0110**

Battery capacity:155Wh(42000mAh,3S7P 3.7V)  
 Input charging  
 Adapter:15V 2A about 7-8h  
 Photovoltaic panel:18-22V  
 AC Output:Modified sine output 110V/220V 60Hz/50Hz  
 USB Output:1xUSB 5V/2.1A Max  
 1xUSB 5-9V/2A QC3.0  
 TYPE-C output:PD18W  
 AC Power:100W/150W Max  
 DC output:2x9-1 2.5A/10A(15A Max)  
 LED Light:XP625W LED light/SOS/Blink mode  
 Working temperature:-10 C-40 C  
 Cycle life:>500times



**P021**

Battery capacity:222Wh(60000mAh,3S8P 3.7V)  
 Input charging  
 Adapter:15V 3A about 7-8h  
 Photovoltaic panel:18-22V  
 AC Output:Modified sine output 110V/220V 60Hz/50Hz  
 USB Output:1xUSB 5V/2.1A Max 1xUSB 5-9V/QC3.0  
 TYPE-C output:PD18W  
 AC Power:200W/320W Max  
 DC output:9-12.5V/10A(15A Max)  
 LED Light:4W LED light/SOS/Blink mode  
 Working temperature:-10 C-40 C  
 Cycle life:>500times



