



安徽骆氏升泰汽车零部件有限公司
Anhui Luoshi Shengtai Auto Parts Co., Ltd.



哲学经营 智造未来

微信公众号



抖音号



公司名称: 安徽骆氏升泰汽车零部件有限公司
公司地址: 安徽省芜湖市湾沚区工业大道1156号
联系电话: 0553-8768135
传真: 0553-8767833
网站: www.anhuishengtai.com

Company Name: Anhui Luoshi Shengtai Auto Parts Co., Ltd.
Add.: No. 1156, Industrial Avenue, Wanzhi District, Wuhu City
Tel: 0086-553-8768135
Fax: 0086-553-8767833
Website: www.anhuishengtai.com

安徽骆氏升泰汽车零部件有限公司
Anhui Luoshi Shengtai Auto Parts Co., Ltd.



01 / 企业简介 Company Profile



行政楼一角



车间一角



仓库一角

安徽骆氏升泰汽车零部件有限公司（原名为芜湖升泰汽车工业有限公司）成立于2005年05月30日，坐落于芜湖市湾沚区安徽新芜经济开发区工业大道1156号，公司占地面积4.5万平方米，注册资金2000万。现有员工200余人。

公司拥有大型标准化厂房和先进的生产线，本公司专业提供从模具设计、毛坯粗精锻、热处理时效、抛光、喷沙、精加工、表面处理、组装、检测等汽车控制臂、球笼、转向节、轮毂毛坯及总成的设计、研发、生产和销售一条龙服务。

生产产品近千种，涵盖德、法、意、美、日、韩等几大车系，远销欧洲、北美洲等国家和地区，自产品进入市场以来，以质量优良、交货及时、价格优惠赢得国内外客户的好评与信赖，并深受客户的青睐。

安徽骆氏升泰汽车零部件有限公司秉承“培育德、智、体的人才，追求全体员工物质两方面幸福，为客户创造价值”的使命，公司员工树立利他之心、积极乐观、钻研创新、强壮体魄的价值观，以及公司雄厚的技术开发力量，全球客户提供优质的产品和服务，赢得各界人士的尊重，是骆氏升泰公司全体员工永久的追求目标！



Anhui Luoshi Shengtai Auto Parts Co., Ltd. (formerly known as Wuhu Shengtai Auto Industry Co., Ltd.) was established on May 30, 2005, located at No. 1156, Industrial Avenue, Anhui Xinwu Economic Development Zone, Wanzhi District, Wuhu City. Our company covers an area of 45000 square meters and has registered capital of 20 million. There are more than 200 employees.



Shengtai has large-scale standardized workshops and advanced production lines. Also we specialize in providing one-stop services including mold design development, production and sales for control arms, CV joints, steering knuckles and wheel hub.

Shengtai has thousands of products, covering major car systems such as Germany, France, Italy, the United States, Japan and South Korea. Our products are mainly sold in Europe, North America and well appreciated by customers.

Anhui Luoshi Shengtai Auto Parts Co., Ltd. adheres to the mission of win happiness in material and spiritual and creating value for customers. Our permanent goal is to help all employees to establish the values of altruism, optimism, innovation, and strong physique. And also win respect from customers depend on strong technical development force, top-quality products and perfect services.



02 / 总经理寄语 Message From General Manager

“升泰育人，育升泰人！”

“德、智、体”全面发展，是小学生都懂得的道理，也是国家和社会对大家的期望和教育。如今，走入社会，走上工作岗位的我们，却依旧需要这些理念。从字面上来理解，“德”是德行，“智”是智慧，“体”是身体、体格。

“做事先做人”“德”排在第一位，有德行的人必然是受人尊敬的。拥有“德、智、体”全面发展的人才，必然是对自己负责，对公司负责，乃至对客户负责的人。

做正确的升泰人，更要做有“精、气、神”的升泰人！这不仅是稻盛和夫先生所讲的“作为人，何为正确？”的评判基准，更是我们公司培育“德、智、体”人才的核心文化发展之路。

亲爱的家人们，非常荣幸我们能携手并进，一起追逐梦想，在这里实现自己的人生价值，并为客户创造价值。工作的目的和意义就是通过自己的努力，不断磨炼自己高尚的人格，实现自己的人生价值，并为人创造价值，得到他人的信任和尊敬。

梁俊峰



03 / 企业文化 Corporate Culture

- 1 **4.1 我们的使命：**
培育“德、智、体”的人才，追求全体员工物心两方面幸福，为客户创造价值！
Cultivate "moral, intellectual and physical" talents, pursue both physical and mental happiness of all staff, and create value for customers!
- 2 **4.2 我们的愿景：**
受到各界人士的尊重！
Vision : Get respect from people from all walks of life!
- 3 **4.3 我们的价值观：**
利他之心、积极乐观、钻研创新、强壮体魄。
Values: Altruistic heart、Positive and optimistic、Study innovation、Strong body.
- 4 **4.4 我们的经营理念：**
挑战高目标，以人为本
Challenge high goals and put people first



04 / 团建活动 Team Activities

增强凝聚力

利他之心、积极乐观、钻研创新、强壮体魄

企业 团建活动 挑战高目标

打造精英大团队

建党100周年团队活动
Team Activities



健身锻炼
Fitness Exercise



精益生产项目团队
Lean Production Project Team



升国旗活动
Flag-Raising Activities



散打搏击比赛
Fighting Match



企业文化学习
Corporate Culture Learning



团建活动
Team Activities



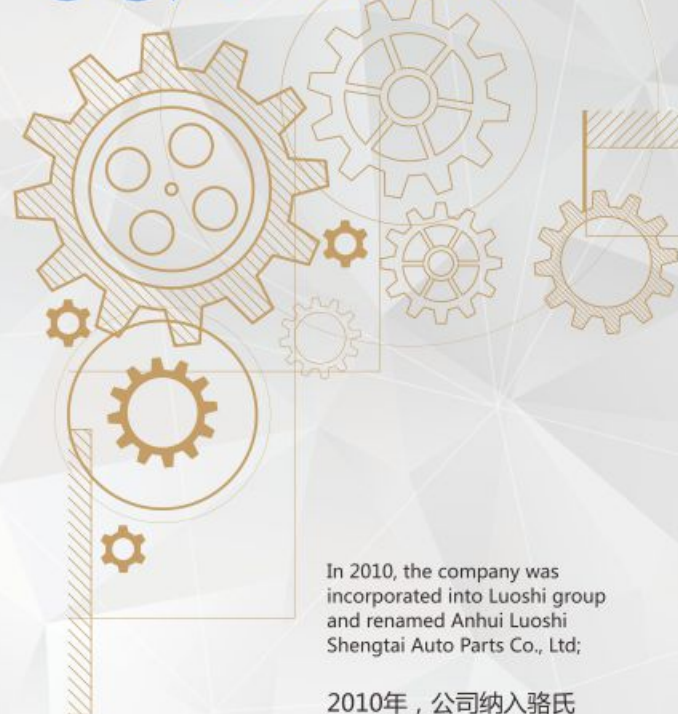
团队户外拓展活动
Team Outdoor Expansion Activities



数字化项目团队
Digital Project Team



05 / 大事记 Memorabilia



The company was incorporated on May 30, 2005, Formerly known as Wuhu Shengtai Automobile Industry Co., Ltd;

2005年5月30日公司注册成立，原名芜湖升泰汽车工业有限公司；

In 2010, the company was incorporated into Luoshi group and renamed Anhui Luoshi Shengtai Auto Parts Co., Ltd;

2010年，公司纳入骆氏集团，更名为安徽骆氏升泰汽车零部件有限公司；

In 2011, the company won the title of "five-star reputable manufacturer in China's auto parts industry";

2011年公司荣获“中国汽配行业五星级信誉制造商”称号；

It passed TS16949 system certification in March 2014 and has the supply qualification of main engine supporting factory;

2014年3月通过TS16949体系认证，具备主机配套厂供货资质；

In 2016, the company fully introduced and promoted ERP system;

2016年公司全面引进和推进ERP系统；

2020年，正值公司成立15周年，公司被评为“市级专精特新企业”称号；2020年公司引进“新核云”数字化项目；

In 2020, the 15th anniversary of the company's establishment, the company was awarded the title of "municipal specialized and new enterprise"; In 2020, the company introduced the "new nuclear cloud" digital project;

2021

2021年四月精益生产项目启动，七月正式启动数字化项目，十月启动企业文化项目。

In April 2021, the lean production project was launched, the digital project was officially launched in July, and the corporate culture project was launched in October.

2015

2015年8月份公司获得“省级高新技术企业”称号；

In August 2015, the company won the title of "provincial high-tech enterprise";

2016

2019年被评为“县级研发中心”荣誉；

In 2019, it was awarded the honor of "county-level R & D center";

2019

2020



2005



2010



2011



2014



2015



2016



2019



2020



2021



STRENGTH CASTMAGNIFICENTLY 实力铸就辉煌

06 企业荣誉 Enterprise Honor

企业与客户共创价值 企业与员工共同发展 诚信 感恩 专业 责任 品质保证 合作共赢

近年来，骆氏升泰通过不断的努力，获得了丰硕的成果。先后荣获高新技术企业认证，中国汽配行业五星级信誉制造商，芜湖县科学技术局科技研发中心、及多项实用型发明专利等。公司始终秉持着以质量求生存，以质量求发展，以质量求效益的经济发展道路，构造质量、环境、安全一体化的汽车零部件企业。

In recent years, Luo Shengtai has achieved fruitful results through continuous efforts. It has won high-tech enterprise certification, five-star reputable manufacturer in China's auto parts industry, science and technology R & D center of Wuhu County Bureau of science and technology, and a number of practical invention patents. The company always adheres to the economic development path of survival, development and benefit based on quality, and constructs an auto parts enterprise integrating quality, environment and safety.

公司荣誉部分分享 Enterprise Honor



高新技术企业证书
High-tech Enterprise Certificate



和谐劳动关系奖
Harmonious Labor Relations Award



科技研发中心
Science And Technology R & D Center



安徽省专精特新企业
Anhui Specialized And Special New Enterprise

专利证书部分分享 Patent Certificate



07 / 生产设备 Production Equipment



08 / 生产概况 Production Overview

铝摆臂事业部 Control Arm Department

年产品系列：汽车控制臂系列、汽车转向节系列，其它各类异形铝件毛坯锻件。

产线介绍：五条锻造线；五组精加工单元线；两条装配线、一条高端自动探伤线。采用行业内精密高端设备，适用于多品种，小批量柔性生产。

生产能力：350-400万件/年。

球笼事业部 CV Joint Department

产品系列：球笼系列；星型套系列。

产线介绍：三条球笼锻造线；两条星型套锻造线；两组精车单元线。采用行业内精密高端设备，适用于多品种，小批量柔性生产。

生产能力：400-600万件/年。

轮毂事业部 Wheel Hub Department

产品系列：轮毂毛坯及总成系列。

产线介绍：两条锻造线；四组精车单元线、一条装配线。采用行业内精密高端设备，适用于多品种，小批量柔性生产。

生产能力：150-300万件/年。

Control Arm Department

Product series: automobile control arm series, automobile steering knuckle series, other kinds of shaped aluminum blank forgings;

Production line introduction: five forging lines; Five groups of finishing unit lines; Two assembly lines and a high-end automatic flaw detection line. The use of sophisticated high-end equipment in the industry, suitable for a variety of small batch flexible production;

Production capacity: 3.5-4 million pieces/year.

CV Joint Department

Product series: ball cage series; Star sleeve series;

Production line introduction: three ball cage forging lines; Two star sleeve forging lines; Two groups of fine car unit lines. The use of sophisticated high-end equipment in the industry, suitable for a variety of small batch flexible production;

Production capacity: 4-6 million pieces/year.

Wheel Hub Department

Product series: wheel hub blank and assembly series;

Production line introduction: two forging lines; Four groups of finishing unit lines, one assembly line. The use of sophisticated high-end equipment in the industry, suitable for a variety of small batch flexible production;

Production capacity: 1.5-3 million pieces/year.



09 / 企业实力及优势 Enterprise Strength And Advantages

9.1 开发流程 Development Process

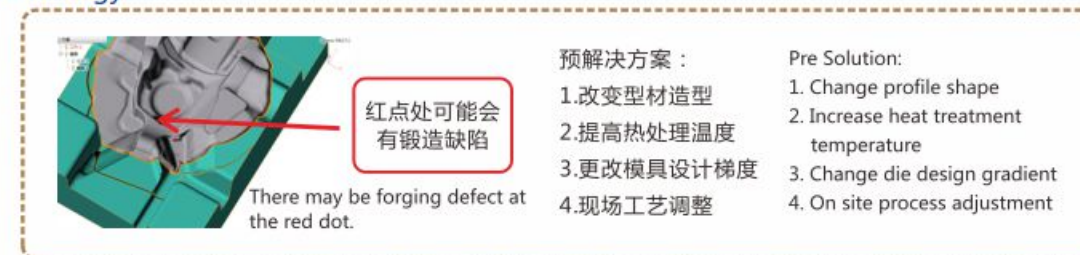


OTS样件输出
OTS Prototype Send

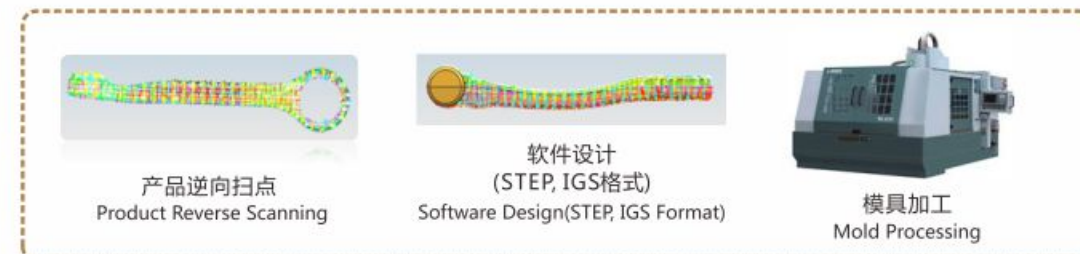


9.2 核心技术 Core Technology

CAE分析 CAE Analysis



模具开发 Mould Development



工装、 检具开发 Tooling Development



9.3 工艺流程图 Process Flow Diagram

控制臂产品工艺流程图
Process Flow Diagram Of Control Arm Product



9.4 计量中心

Measurement Center

检测和试验设备是体现企业产品设计和品质保证的重要载体。为此，多年来，升泰公司积极筹划，认真落实，先后配置了生产经营所必须的各类检测和试验设备。并建立了计量中心，加强了对于产品技术数据的分析能力，提升了技术和工艺的准确率，大大缩短了产品的开发周期。为提高产品开发和生产质量提供了保证。

Detection and test equipment is an important carrier for enterprise product design and quality assurance. Therefore, over the years, Shengtai company has actively planned and earnestly implemented, and has successively configured various detection and test equipment necessary for production and operation. The measurement center has been established to strengthen the analysis ability of product technical data, improve the accuracy of technology and process, and greatly shorten the product development cycle. It provides a guarantee for improving product development and production quality.

质量经营，技术创新 Quality management, technological innovation
持续改进，顾客满意 Continuous improvement, customer satisfaction

为确保产品性能可靠性，质量部配备了多种先进检测设备，并形成了IQC,OQC,IPQC,QA,SQE,QE,计量，售后服务等以质量为中心的全方位的品质管理体系。公司现已通过IATF16949.2016体系认证，品质管理更加完善。

In order to ensure the performance reliability of the product, the quality control department is equipped with a variety of advanced detection equipment, and achieved management system of IQC/OQC/IPQC/QA/SQE/QE. The company has been certified by the IATF16949.2016 system.



9.5 计量实验设备

Laboratory Equipment



- ◆金相分析：依据GB/T 3246.2-2012 变形铝及铝合金制品组织检验方法。第2部分：低倍组织检验方法。
Metallographic examination: according to GB/T 3246.2-2012
- ◆硬度测试：依据布氏硬度试验(GB/T 31.1)标准
Hardness test: according to GB/T 31.1
- ◆化学分析：依据GBT 3190-2008 变形铝及铝合金化学成分
Chemical composition analysis of metal: according to GBT 3190-2008

- ◆三坐标尺寸检测：依据图纸要求及标准
CMM dimension inspection: according to drawing
- ◆影像仪尺寸检测：依据图纸要求及标准
V M A dimension inspection: according to drawing
- ◆轮廓仪尺寸检测：依据图纸要求及标准
Stylus Profiler dimension inspection: according to drawing



10 / 产品介绍 Product Introduction

10.1 摆臂事业部 >>> Control Arm Department

控制臂总成

奔驰、宝马、奥迪等各类高端车型控制臂总成

Control Arm Assembly

Mercedes Benz, BMW, Audi and other high-end models of the control arm assembly



套 装

各类底盘悬挂总成套件

Control Arm Sets

Various chassis suspension assembly kit



毛坯锻件

轮毂、转向节、消防栓等各类异形毛坯锻件

Forging Blank

Hub, steering knuckle, fire hydrants and other various types of special-shaped forging blank



10.2 球笼事业部 >>> CV Joint Department

星形套

汽车传动轴毛坯零件星形套系列

Star Sleeve

Automobile drive shaft blank parts star sleeve series



球 笼

汽车传动轴零件球笼系列

The Ball Cage

Automobile drive shaft parts ball cage series



10.3 轮毂事业部 >>> Wheel Hub Department

