



T-MAX (HANGZHOU) TECHNOLOGY CO.,LTD

Address: NO.5,Road 5,Dong zhou Industrial Area Fuyang City, Hangzhou, China, 311401

Tel: 86-571-87191166 87191006

[Http://www.tmax.biz](http://www.tmax.biz)

E-mail: tmax@tmaxtools.com

Y42303A

Copyright T-MAX (HANGZHOU) TECHNOLOGY CO.,LTD All rights reserved

T-MAX[®]

MAXIMUM OFF ROAD RECOVERY™

RECOVERY GEAR



Synthetic rope

P/N	Applicable Winch	Specification (Dia*L)
9111242	10000LBS	11mm x 24m
9112222	12500LBS	12mm x 22m
9113252	15000LBS	13mm x 25m
9114252	18500LBS	14mm x 25m



FEATURES

- ✓ Special processing to prevent sand into rope
- ✓ More abrasion-resistance,
- ✓ More UV resistance
- ✓ More heat resistance
- ✓ Scratch and cut resistance
- ✓ Floats, minimal weight-torque free
- ✓ No kinks, curls or wire splinters
- ✓ Minimal Stretch, non-rotational
- ✓ Little lash-back occurs



ITEM&SPECIFICATIONS

P/N	Specification (Dia*L)	Applicable Winch	Breaking Limit Load
9112281	31/64"×94' (12mm×28m)	15000lbs	24700lbs
9111271	7/16"×90' (11mm×27m)	12000lbs	22500lbs
9110451	25/64"×150' (10mm×45m)		
9110281	25/64"×94' (10mm×28m)	10000lbs	19310lbs
9110241	25/64"×80' (10mm×24m)		
9110151	25/64"×50' (10mm×15m)		
9194281	3/8"×94' (9.4mm×28m)		
9194241	3/8"×80' (9.4mm×24m)	9500lbs	17600lbs
9194151	3/8"×50' (9.4mm×15m)		
9191301	23/64"×100' (9.1mm×30m)		
9191241	23/64"×80' (9.1mm×24m)	9000lbs	16550lbs
9191151	23/64"×50' (9.1mm×15m)		

P/N	Specification (Dia*L)	Applicable Winch	Breaking Limit Load
9186301	11/32"×100' (8.6mm×30m)		
9186241	11/32"×80' (8.6mm×24m)	8000lbs	15000lbs
9186151	11/32"×50' (8.6mm×15m)		
9175151	3/10"×50' (7.5mm×15m)	6000lbs	12000lbs
9163151	1/4"×50' (6.3mm×15m)	4500lbs	8400lbs
9155151	4/19"×50' (5.5mm×15m)	3500lbs	5600lbs
9147151	3/16"×50' (4.7mm×15m)	2500lbs	4600lbs

Winch Extension Rope

P/N	Specification (Dia*L)	Breaking Force(BLL)
9175153	3/10"×50'(7.5mm×15m)	5.2T
9175303	3/10"×100'(7.5mm×30m)	5.2T



Synthetic Tow Rope

P/N	Specification (Dia*L)	Breaking Force(BLL)
9163064	1/4"×20' (6.3mm×6m)	3.6T



WARNINGS

Fiber rope will fail in case of worn, damaged, overloaded, or not properly maintained; The user is responsible to determine the suitability of a rope for specific applications; Use only rope in good condition, without cuts or pulled strands; Bear in mind the working load limitation of your rope; Do not exceed the working load limitation or shock load of your rope; Do not stand within the lash-back area; Do not use over rough surfaces without chafe protection; Do not bend around unprotected, sharp corners

T-MAX Soft shackle

P/N: 9112016

Material: Import Ultra high molecular weight polyethylene
Maximum tension: 18T / 40000LBS
Diameter: 12mm (1/2")
Length: 90cm
Package size: 25*31*cm
Product weight: 0.28kg



T-MAX Soft shackle

P/N: 9194016

Material: Import Ultra high molecular weight polyethylene
Maximum tension: 13.6T / 30000LBS
Diameter: 9.4mm (3/8")
Length: 70cm
Package size: 25*31*cm
Product weight: 0.14kg



Musclelife Soft shackle

P/N: 9112026

Material: Import Ultra high molecular weight polyethylene
Maximum tension: 18T / 40000LBS
Diameter: 12mm (1/2")
Length: 65cm
Package size: 25*31*cm
Product weight: 0.28kg



Musclelife Soft shackle

P/N: 9194026

Material: Import Ultra high molecular weight polyethylene
Maximum tension: 13.6T / 30000LBS
Diameter: 9.4mm (3/8")
Length: 55cm
Package size: 25*31*cm
Product weight: 0.14kg



T-MAX HYDRAULIC JACK

P/N: 6809200

SPECIFICATION

Min Lifting Height:	6.3 in	Maximum Lifting Height:	27-48in
Travel :	21.2in	Lifting Range :	6-48in
Maximum Capacity :	4,409lbs	Compressed Height:	35.7in
Extended Height :	57in	Weight :	26lbs
Inches Per Stroke:	0.78in		

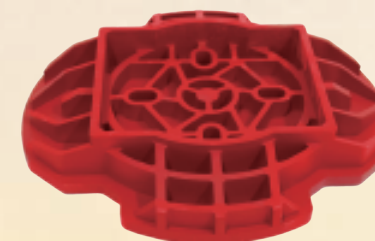


Accessories box

With instrument accessories box, convenient storage of hook, longer hook, tire lift and other accessories.



OPTIONAL PARTS



HYDRAULIC JACK BASE

P/N: 6809200.4

3000KG rated load capacity. Heavy duty, high density polypropylene construction. Non-slip textured pattern on based for extra grip. High visibility safety red.

Each press can lift 20MM. The ergonomically-designed handle are Wrought aluminium, high strength.

Jack body is made of aviation aluminium. Jack surface is treated by hard oxidation, high hardness and corrosion resistance.

9 hooking points offer a variety of rescue heights.

After the red latch is pressed in, it must hear a clear prompt sound to ensure safety.

Jack's body can be rotated 360° to align the pivoting foot to match different environments and terrains.

The red pressure relief valve has the self-stopping function of sensing pressure, which can make the vehicle slowly descend or stop to the required position, and prevent the harm of rapid landing to the operator.

Black rubber protective sleeve, to avoid the impact and wear of the pushdown operation rod on the Jack body.

Can adjust the lifting position quickly and quick rescue.

The Hook are tenon structure, which is convenient for the replacement of hook, longer hook and other accessories, so as to adapt to more rescue scenes.

1. Replacement of hook

2. Longer hook

RACING SERIES II GAS TANK WITH ADJUSTABLE SERIES

Features

- 46mm diameter piston
- With Fender
- The canister can rotate,easy to install.
- Multilevel seal: main seal, pressure seal, dust-proof seal.
- The diameter of the aluminum gas tank is 56mm, the oil storage is more, the heat dissipation is stronger.



Product Features	Parameters		Vehicle Application
	Front	Rear	
Lift	2' inches	2' inches	Jeep Wrangler JK 4D, Ford Ranger, Hilux Revo 4D, Hilux Vigo TOY. FJ CRUISER
Tube Spec	2.0 inches	2.0 inches	
Shaft	20mm	20mm	
Compression	10 stage	10 stage	
Tube Material	Steel Tube	Steel Tube	
Canister Material	Steel Tube	Steel Tube	
Sealing System	-60 ℃ -180 ℃	-60 ℃ -180 ℃	
Connection Type	Hose Connection	Canister inside	
Spring	Medium Duty	Medium Duty	
Road Condition	Street/Senior Off-Road	Street/Senior Off-Road	
Rebounding Adjuster	NO	NO	

Item	Part No.	Vehicle Model
1	TX03-01-0112A	JEEP RUBICON UP2" FRONT
2	TX03-01-0122A	JEEP RUBICON UP2" REAR
3	TX03-05-1312A	TOY.HILUX VIGO 4WD STD/UP2" FRT
4	TX03-05-1322A	TOY.HILUX VIGO 4WD STD REAR
5	TX03-05-1012A	FORD RANGER T6 STD/2" FRONT
6	TX03-05-1022A	FORD RANGER T6 STD REAR
7	TX03-05-1212A	TOY.HILUX REVO STD/UP2" FRT
8	TX03-05-1222A	TOY.HILUX REVO STD REAR
9	TX03-02-1312A	TOY. FJ CRUISER STD/2" FRONT
10	TX03-02-1322A	TOY. FJ CRUISER STD REAR

RACING SERIES I

Features

- 46mm diameter piston
- Multilevel seal: main seal, pressure seal, dust-proof seal.
- The whole body adopts the electrophoresis process
- The diameter of the nitrogen gas tank is 56mm, the oil storage is more, the heat dissipation is stronger.



Product Features	Parameters		Vehicle Application
	Front	Rear	
Lift	2.5' inches	2.5' inches	Jeep Wrangler JK 4D, Ford Ranger, Hilux Revo 4D, Hilux Vigo
Tube Spec	2.0 inches	2.0 inches	
Shaft	20mm	20mm	
Compression	NO	NO	
Tube Material	Steel Tube	Steel Tube	
Sealing System	-60 ℃ -180 ℃	-60 ℃ -180 ℃	
Spring	Medium Duty	Medium Duty	
Road Condition	Street/Senior Off-Road	Street/Senior Off-Road	
Rebounding Adjuster	NO	NO	

Item	Part No.	Vehicle Model
1	TX02-01-0112	JEEP RUBICON UP2" FRONT
2	TX02-01-0122	JEEP RUBICON UP2" REAR
3	TX02-05-1312	TOY.HILUX VIGO 4WD STD/UP2" FRT
4	TX02-05-1322	TOY.HILUX VIGO 4WD STD REAR
5	TX02-05-1012	FORD RANGER T6 STD/2" FRONT
6	TX02-05-1022	FORD RANGER T6 STD REAR
7	TX02-05-1212	TOY.HILUX REVO STD/UP2" FRT
8	TX02-05-1222	TOY.HILUX REVO STD REAR

Jerry Can 10L

P/N: 2101810

Comply with UN Certification
Material: Galvanized Sheet 0.8mm
Color: Red
Measurment: 75 x 36.5 x 30.5CM



Jerry Can 20L

P/N: 2101820

Comply with UN Certification
Material: Galvanized Sheet 0.8mm
Color: Red
Measurment: 75 x 36.5 x 49.5CM



Jerry Can Holder

P/N: 2101810.5

Black power coating



Inflator Gauge

P/N:7329100.8-13H

- Reader unit: Digital display
- Chuck type: Clip on
- Scale: 0-14Bar,0-200PSI, 0-1400KPa,0-14kgf/cm
- Inlet thread size: 1/4" NPT female
- Hose length: 42.5cm/25.4" with dual swivel
- Dimensions(mm): 95L x 75W x 28H
- Dimensions(inch): 3.7" x 2.9" x 1.1" H
- Weight: 0.5kg/1.1lb
- Accuracy: +/-1PSI @25-75PSI
- Operation: Inflate,deflate,measure
- Maximum supply pressure: 350PSI, 2400KPa
- Batteries: 2 x AAA batteries(included)
- Battery Life: 200 hours



46 PCS Emergency Tire Repair Kit

P/N:7329100.8.13H

- 1 PC Zinc-Alloy T-handle Insert Tool
- 1 PC Zinc-Alloy T-handle Spiral Probe Tool
- 20 pcs 8" (100mm) Self-vulcanization Plugs
- 1 pc Double head Tire Pressure Gauge 10-120psi
- 4 pcs Standard Valve Cores
- 4 pcs Brass Hex Valve Caps
- 4 pcs Plastic Valve Caps
- 4 pcs Plastic Extension Valve
- 1 pc 4-Way Valve Stem Tool
- 2 pcs L-TYPE Hex Tools
- 1 pc Plastic Storage Box
- 1 pc Knife
- 1 PC Lube
- 1 PC Blow Mould Case



Outdoor Light 350P

P/N:7329100.8-350P



	Specifications	7329100.8-350P
Flashlight	Power	3W(Max)
	Discharge Time	15H(High Light) 30H(General Light)
	Working Distance	160m
LED Tube	Power	9.6W(Max)
	Discharge Time	12~160H
Battery	Input/Output	5V/1A
	Rated Capacity	3.6V/5000mAH
Lumens	Spotlight	200lm
	Floodlight	460lm

Portable compressor

P/N: 8072601

Specification

Maximum Air Flow: 72Lpm(13.8v)
Maximum Amperage Draw: 30A
Maximum Working Pressure: 150Psi
Maximum Ambient Temp: 60°C
Minimum Ambient Temp: -40°C
Maximum duty cycle time: 40mins@30psi@22°C



Portable Air Compressor

P/N: 8016601

Specification

Voltage: DC 12v
Maximum Air Flow: 160Lpm
Maximum Amperage Draw: 45A
Maximum Working Pressure: 120Psi
Maximum Restart Pressure: 150Psi
With amperage over-load protector, Automatic re-set
Cylinder diameter: 60mm



Air Compressor

P/N:8018610

Maximum Air Flow: 180L/Min
Voltage: DC12V
Motor: 540 Watts
Maximum Pressure: 150PSI
Maximum Amperage Draw : 45Amp
Cylinder: 62mm
Hose: 6M Leader Hose With Lock On
Power Cable: 2.5m With Battery Clamps
Control Panel: 75PSI On/100PSI Off Switch
Pressure Gauge: 0-150PSI





Accessory Kit

Accessory Kit (Sand Storm)

P/N: 7329100.8HB

Contents:

P/N 7329100.8-300 Metal Ammunition Box
P/N 7329100.8-310 T-MAX winching gloves
P/N 7329100.8.5B 20000 lbs.(9072kg) maximum capacity snatch block with grease port
P/N 7329100.8-76 3/4"(20mm) shackles (2x)
P/N 9335611 2 3/8" x 20' (6cm x 6m) standard recovery strap, rated to 17,500 lbs (8000 kg)
P/N 7329100.8-40 3 1/8" x 10' (8cm x 3m) tree trunk protectors ,load rated to 22,000 lbs.(10000 kg)

T-MAX Accessory kit

P/N: 7329100.8 RXK

Contents:

P/N: 7329100.8-9
P/N: 7329100.8-140
P/N: 7329100.8-310
P/N: 7329100.8.5D-2
P/N: 9194026
P/N: 9348610

7329100.8-9



7329100.8.5D-2



7329100.8-310



9348610



9194026



7329100.8-140

T-MAX Accessory kit

P/N: 7329100.8

Contents:

P/N 7329100.8-10
P/N 7329100.8-30
P/N 7329100.8-40
P/N 7329100.8-50
P/N 7329100.8-76
P/N 7329100.8-78
P/N 7329100.8-80
P/N 7329100.8.5-1
P/N 7329100.8.5.1

7329100.8-10



7329100.8-40



7329100'8'5"1



7329100.8-76



7329100.8-78



7329100.8-80



7329100.8-50



7329100.8-30



7329100.8.5-1

T-MAX Accessory kit

P/N: 7329100.8D

Contents:

P/N 7329100.8-10
P/N 7329100.5A
P/N 7329100.8-76
P/N 7329100.8-76
P/N 9335610

7329100.8-10



P/N 7329100.5A



7329100.8-76



9335610

Snatch Strap

	9335610	9348610	9366610
min. breaking strength:	17,500lb	24,000lb	33,000lb
length:	30'	30'	30'
width:	2-3/8"	3-1/8"	4-1/3"
elasticity:	genuine 20%	genuine 20%	genuine 20%
material:	100% Nylon	100% Nylon	100% Nylon
reinforced eyes:	yes	yes	yes
eye & seam protector sleeves:	yes	yes	yes



Winch Extension Strap

P/N:	9335320
min. breaking strength:	17,500lb
length:	66'
width:	3-1/8"
elasticity:	genuine 20%
material:	100% Polyester
reinforced eyes:	yes
eye & seam protector sleeves:	yes



Tree Trunk Protectors

P/N:	9353731	9353732
min. breaking strength:	26,500lb	26,500lb
length:	10'	16'
width:	3-1/8"	3-1/8"
elasticity:	genuine 20%	genuine 20%
material:	100% Polyester	100% Polyester
reinforced eyes:	yes	yes
eye & seam protector sleeves:	yes	yes



Snatch Strap

P/N:9335611	
Min.breaking strength:	17,500lbs
Length:	20'
Width:	2 3/8"
Elasticity:	genuine 20%
Material:	100%Nylon
Reinforced eyes:	yes
Eye & seam protector sleeves:	yes

4.5t Tow Hook

P/N 7329100.8-80

Black Coating



Shackles

P/N: 7329100.8-76

3/4" Bow Shackle

P/N: 7329100.8-73

1/2" Bow Shackle

P/N: 7329100.8-75

5/8" Bow Shackle

P/N: 7329100.8-78

3/4" D-Shackle

Cast alloy/steel, load-rated, and powder coated assures lasting performance.



4" Snatch Block

P/N: 7329100.8.5.1

Fully machined billet and 1/4" side plates provide minimum breaking strain of 28,800 lbs. Pulling capacity: 28,240 lbs.



4" Snatch Block

P/N: 7329100.5.A

Fully machined billet and 1/4" side plates provide minimum breaking strain of 18,000 lbs. Pulling capacity: 17,650 lbs.



Snatch Block

P/N: 7329100.8.5.B

Fully machined billet and 1/4" side plates provide minimum breaking strain of 28,800 lbs. Pulling capacity: 20,000 lbs. Applicable winch: < 12,000 lbs.



Jeep Wrangler Winch Mount

P/N: 7329100.8-103



Standard Winch Support

P/N: 7329100.8-101

Ensures level mounting surface across various mounting applications. Black powder coated 1/4" steel. 22.5" L x 7.5" D.



Pin for Quick Mounting Set

P/N: 7329200.8.11A.2



Quick Mounting Set

P/N: 7329200.8.11A

Receiver Mount Quick Release Winch Mount. Heavy-duty design protects your winch. High angle arms allows winching from wider angles. Measures 21.5" L and 12.25" H overall. .25" steel base. Black powder-coated finish.



Farm Jack&Farm Jack Cover

Farm Jack Specification

AUSTRALIAN VERSION	P/N	6448610	6460610
SIZE		48"	60"
LOAD(LBS)		4600LBS	4600LBS
MAXLOAD(LBS)		7000LBS	7000LBS
MIN.H.(MM)		130	155
MAX.H.(MM)		1070	1350
MEAS(MM)		1235X245X140	1515X245X140
N.W.(KG)		13	14
G.W.(KG)		14	15
20' CONTAINER(PCS)		670	550



Jack Holder for Landrover

P/N: 6448610.8



P/N: 6448610

P/N: 6460610

Farm Jack Cover

P/N: (7329100.8-21) 48"
(7329100.8-21) 60"

Damper

P/N: 7329100.8-140

• The weight is 2.20LBS



T-MAX Sport hat

P/N: 7329100.8-120

• Black



MUSCLELIFT Sport hat

P/N: 7329100.8-121

• Black

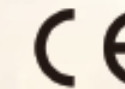


Hand Pulling Winch

P/N 6318100 Rated capacity 800kg

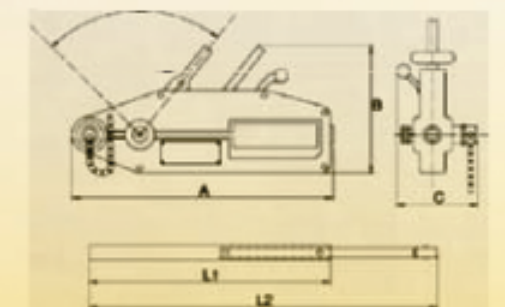
P/N 6335100 Rated capacity 1600kg

P/N 6370100 Rated capacity 3200kg



Specification

ITEM	P/N	6318100	6335100	6370100
Rated forward hand power(N)		341	438	438
Rated capacity		800	1600	3200
Rated forward travel(forward & backward)(mm)		≥52	≥55	≥28
Rope diameter(mm)		8.3	11	16
Wire rope safety factor load capacity		5	5	5
Safety factor & static load capacity		5	5	5
Max traveling load(kg)		1200	2400	4000
Net weight		6.4	12	23
Max Dimensions	A	426	545	660
	B	238	284	325
	C	64	97	116
L1(cm)			80	80
L2(cm)		80	120	120



P/N:DBS02 T-MAX DUAL BATTERY DISPLAY UNIT



Specifications

Supply Voltage	8...16V	Isolator switch-on threshold	13.3V
System Voltage	12V	Consumption on-state (relay)	0.8A
Measuring Range (sense wire blue)	8...16V	Relay Continuous load current	
Display Range (Battery Voltage)	11.0V... 12.8V	Relay contact material	silver
Display Range (Charge)	13.0V... 14.5V	Starter and Gel Batteries may be installed	yes
Accuracy	±/-2%	Operating Temperature	-20°...+60°
Consumption (Stand by)	5mA	Housing	ABS black
Consumption max Display active (45sec)	150mA	Size	103x21x100mm
		Sealing standard version	IP40

Quick Connector

UL Certification available



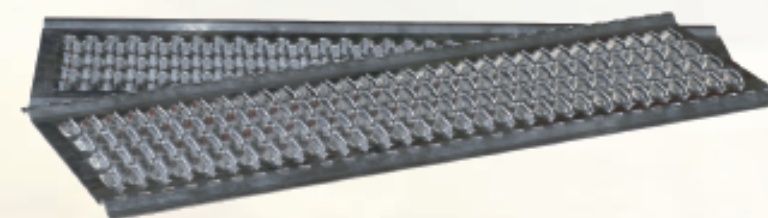
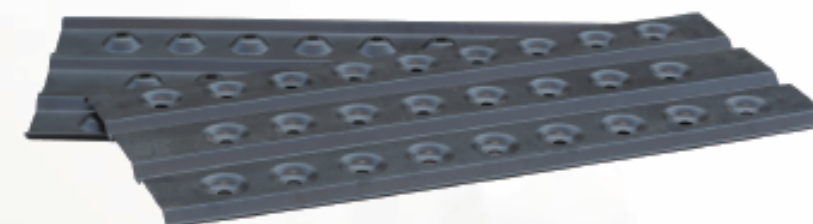
P/N: 7329100.11-7 (175A)

P/N: 7329100.11-7A (50A)



Aluminium Sand Ladder

P/N	Specification
Slal5454	Length x Width x Thickness (mm) 1500 x 450 x 4 (Black)
Slal0454	1000 x 450 x 4 (Black)
Slal0304	1000 x 300 x 4 (Black)



Aluminium Sand Ladder

P/N: Slal2383

Specification: 1200 x 350 x 3
Length x Width x Thickness (mm)
No powder coating

Aluminum Fairlead (AFL)

P/N: 7329200.7A

For winch with a mounting pattern of 10" x 4.5" (254x114.3mm)



Aluminum Fairlead

P/N: 7205110.4

For ATW 3500 Winch Below



Aluminum Fairlead-S (AFS)

P/N: 7309200.7A

For winch with a mounting pattern of 6.55"x4.5" (166.4x114.3mm)
EW-6500, ATW-4500, ATW-6000



Fairlead Mount Receiver (FMR)

P/N: 7309200.7-1

Optional



Roller Fairlead

P/N: 7205100.4

For ATW 2500 Winch Below



Note please

AFS can be used for a winch with a mounting pattern of 10"x4.5" (254x114.3mm) by adding the FMR

