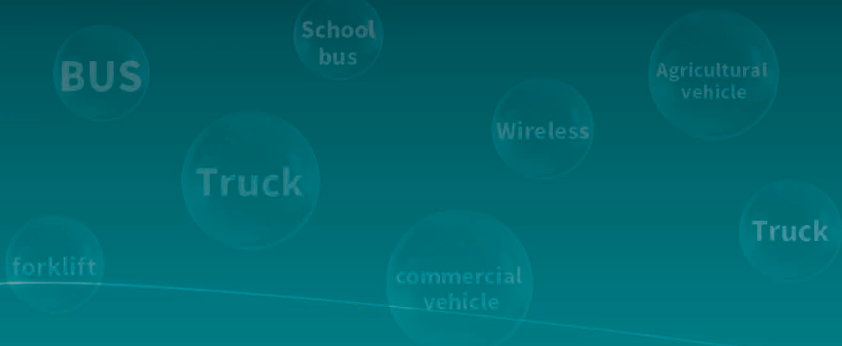




World's Leading Supplier of ***VISION SOLUTIONS***

- AI 360° AVS
- AI MDVR
- AI Dashcam
- AI CMS
- AI Cameras
- AI Wireless
- AI Radar



www.stonkam.com

STONKAM®
a better vision for the world

STONKAM®

AI 3D 360° AVS (4G + GPS + 360° + BSD + ADAS)



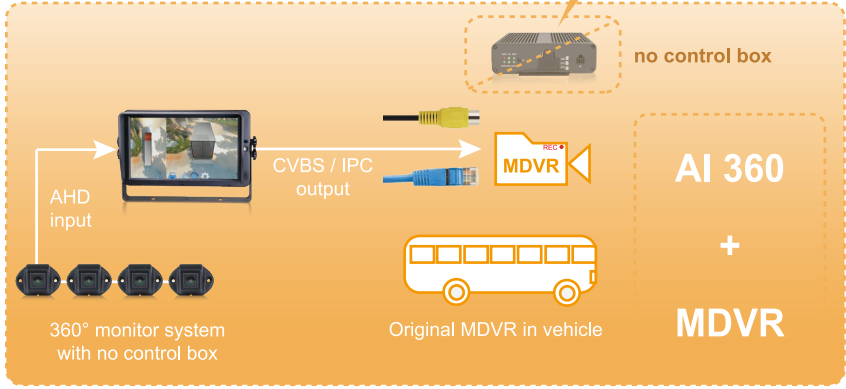
6CH 360° AVS

4CH 360° AVS

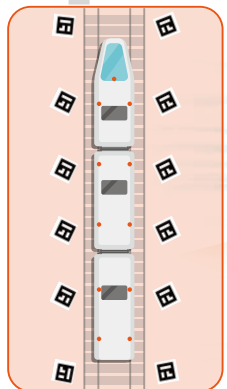
4CH 360° Monitors

AI 360° Monitor + MDVR

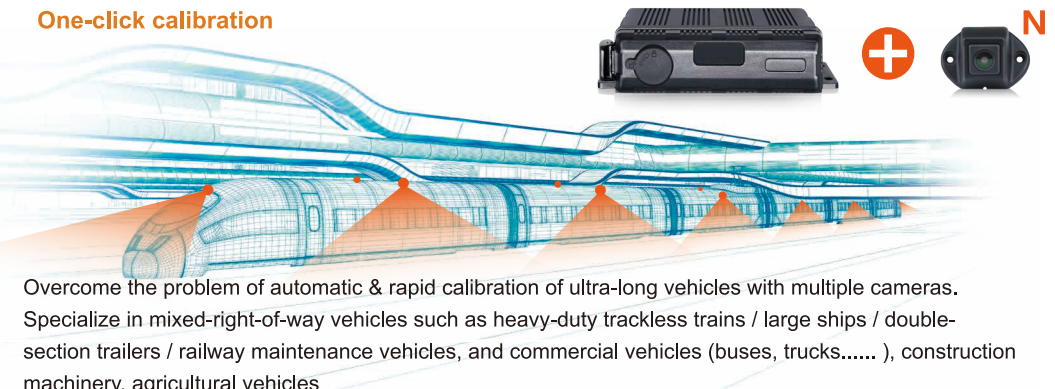
The 360° monitor can be connected to the existing MDVR as a camera input for recording use, it can help the MDVR to achieve AI 360 + MDVR functionality.



Panoramic Breakthrough Tech Calibrates Ultra-Long Vehicles



One-click calibration



Overcome the problem of automatic & rapid calibration of ultra-long vehicles with multiple cameras. Specialize in mixed-right-of-way vehicles such as heavy-duty trackless trains / large ships / double-section trailers / railway maintenance vehicles, and commercial vehicles (buses, trucks.....), construction machinery, agricultural vehicles

AI MDVRs—(4G + GPS + 360° + BSD + DMS + ADAS)

2×512GB SD



(DV435-4CH)

Waterproof: IP69K



(DV454-8CH)

1x2.5"2TB SSD+1×512GB SD

(DV456-4CH)

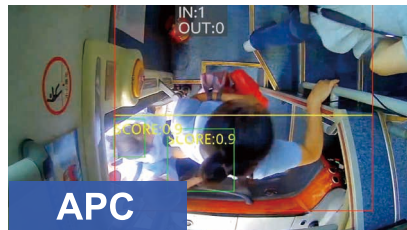
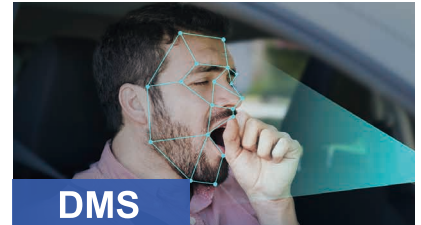
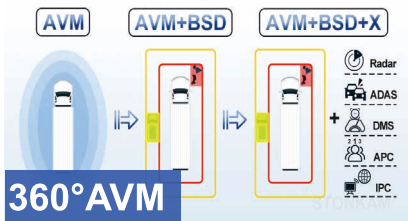
1x2.5"2TB SSD+1×512GB SD

4×512GB SD



(DV455-4CH)

AI Powerful Algorithm Functions



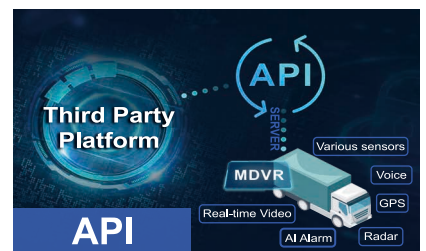
Intelligent CMS Platform

Achieve remote monitoring by DVR GPS tracking / 3G /

4G / WiFi, convenient vehicle management on PC / Mobile phone.

Automatically uploading, data statistics and reminder for alarm recording, alarm Information, log Information.

Multiple trigger recording modes with 15 seconds prerecording function.Support API to realize the interface with customer's system.



AI Dashcam (4G + GPS + DMS + ADAS)

2K

ADAS

DMS

Compliant with DDAW certification

Support extra 2 cameras (IPC / AHD)

(ADA44)

Available for left, right & rear view monitoring, no need for an extra control box, externally connectable AI camera for BSD pedestrian & vehicle recognition

DMS

ADAS

CH3

CMS Client

AI Monitor and Camera (4G + GPS + BSD)

GPS+4G

(ADA32C4)

MDVR+Monitor

(HD277R) (HD297R)

· Built-in AI Pedestrian / Vehicle Detection & Alert Algorithm

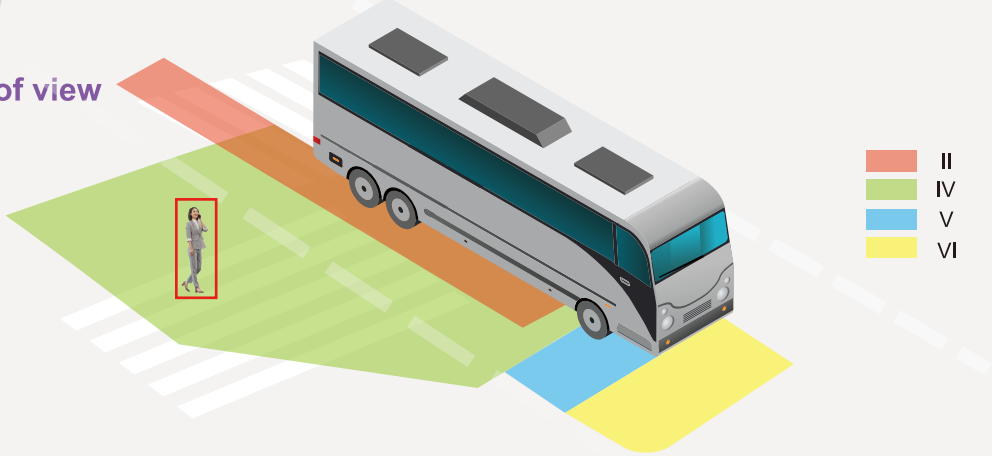
· Ultra-large Storage Capacity, Loop Recording

· Vehicle Tracking and Management without the need for an external DVR

IP66

UN ECE R46 For Indirect Vision

Field of view



- II
- IV
- V
- VI

AI CMS (360°+BSD)



Application 1: 3CH



(HD250D)



Supporting 2CH 1080P camera inputs;
 Integrated BSD algorithm; 1 x 512GB SD Card, 30fps Video Recording
 IPS Screen; 1920x3(RGB)x720 Resolution;
 Brightness: 1000 cd / m², Contrast: 1000:1
 Power input: 10-32V; Operating temperature: -20°C ~ +70°C; Anti-vibration: ISO 16750-3 2012 (2.13G)

Application 2: 6CH 360° AVM



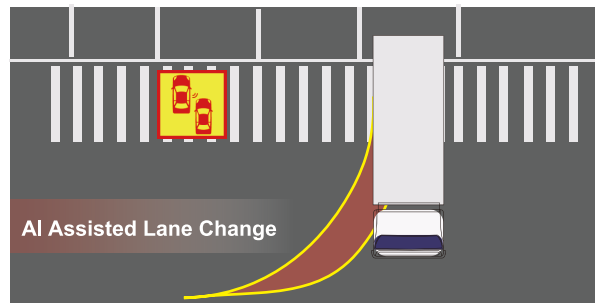
(HD250D)



(FHD808*4)



(FHD685) (FHD844)



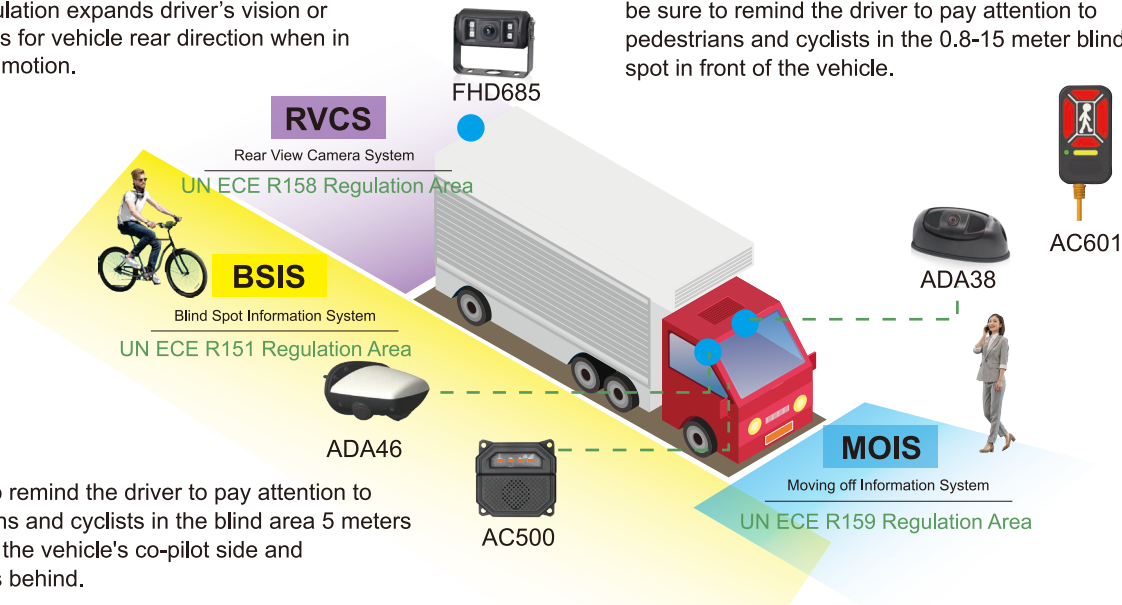
AI Cameras (GPS + BSD + APC + DMS + ADAS)

RVCS:

This Regulation expands driver's vision or awareness for vehicle rear direction when in reversing motion.

MOIS:

be sure to remind the driver to pay attention to pedestrians and cyclists in the 0.8-15 meter blind spot in front of the vehicle.



BSIS:

be sure to remind the driver to pay attention to pedestrians and cyclists in the blind area 5 meters in front of the vehicle's co-pilot side and 45 meters behind.

Built-in audible and visual alarm

Compact size

ADAS

APC



(ADA37)

(ADA32)

(ADA650)

(ADA410)

(ADA844)

(ADA38P)

(ADA900)

DMS (4G+GPS)

Compliant with DDAW certifications

(DMS31)



2CH / 4CH AI box

(4G + GPS + 360° + BSD + DMS + ADAS)

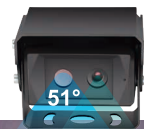


(ADA42-2CH)



(DV435-4CH)

AI Thermal Cameras (BSD + Thermal + Visible Light)

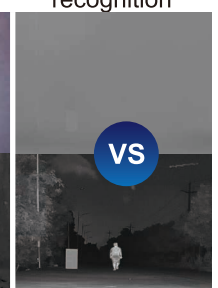


(TC639-T2)
256×192 pixels
distance:80M
recognition



(TC639-T3)

384×288 pixels
distance:220M
recognition



AI Digital Cameras (AHD + LVDS + BroadR-Reach + IPC)

BSD & BroadR-Reach



(ADA32E)



(FHD902N)



(FHD085N)



(FHD676N)



(FHD086N)



(FHD410L)

LVDS

AI Zoom Camera (30x optical * 5x digital zoom + BSD)

Wireless Zoom Camera



30X Zoom



Night Vision: 50M



IP69K



1080P

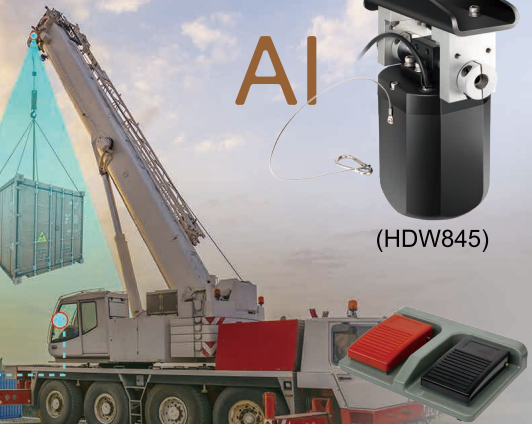


Transmission Distance: 200-300M

AI



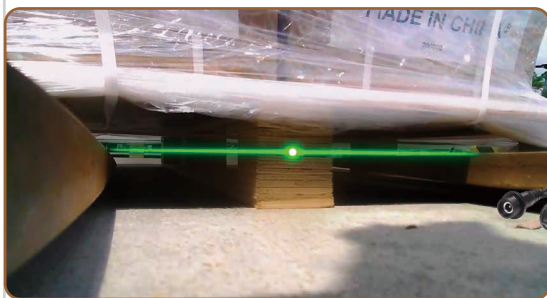
(HDW845)



(Foot pedals)

LASER Camera System

Laser positioning, designed for forklift



(HDW814P)



(AC552)
9600mAh



(AC594)
25000mAh



(HDW125Q)



AI HD Digital Wireless (BSD) / Wi-Fi system

2.4GHz Digital Wireless System

IP66 (HDW297Q) 10.1-inch waterproof wireless display with intelligent pedestrian and vehicle monitoring

(HDW295Q) (HDW125Q) (HDW261Q) (HDW127Q) (AC594) (AC558)

(HDW871) (HDW873) (HDW835M) (HDW897) (WT479) (WR480)

Auto-shutter

WIFI System

WIFI System

WF897

(WT473) FHD808

HD Quad-View Monitoring and Radar Systems

(IP69K) 7" (IP69K) 7" (IP69K) 7" (IP69K) 10" Auto shutter

(FHD657) (HD140D) (HD277D) (HD264D) (HD291D) (FHD656)

(FHD844) (FHD813) (FHD406) (FHD407) (FHD38XS) (FHD676)

(Microwave / Ultrasonic)

(IP66)

(PSA27) (HD261D)

24 / 77 / 79GHz

(AC618) (PSA27) (FHD639) (HUD) (IP69K)

STONKAM CO., LTD

Add: 1/F., #6 Building, Huangzhou Industrial Park,
Chebei Rd., Tianhe, 510660 Guangzhou, China
Tel: (86-20) 6667 0988
E-mail: sales@stonkam.com
Web: www.stonkam.com

