

PROFESYONEL ÇÖZÜM ORTAĞINIZ

PROFESSIONAL SOLUTION PARTNER



PARTNER ZA PROFESIONALNA RJEŠENJA
PARTNER FÜR PROFESIONELLE LÖSUNGEN
PARTENAIRE AU SOLUTION PROFESSIONEL
شريك الحل المهني

Since 1990...





| SIZE | QUANTITY OF BOXES | PRUDUCT NO |
|------------|-------------------|--------------|
| 500 ml | 24 Pcs | 6020690 |
| NET WEIGHT | GROSS WEIGHT | PALLET x BOX |
| 337 g | 447 g | 10x7 |



BRAKE CLEANER

It is used in automobiles, heavy vehicles, machinery and related products.

It quickly removes the oil, dirt and residue on oily and greasy surfaces of vehicle brake systems both disc and drum, engines, transmissions etc. besides any dried brake dust.

Suitable for general use.

It is not corrosive.

It dissolves even thick types of oil.

It takes effect in short time.

It contains ozone-friendly propellants that do not harm the environment.

INSTRUCTIONS ON HOW TO USE

Shake well before using.

Apply the spray on the desired surface from a distance of 10-20 cm.

Dry the parts in open air or by wiping them with a cloth.

You can also use the product by turning it 180° upside down.

Repeat the process if necessary on very dirty areas.



| | |
|-----------------------|------------------|
| Physical Appearance | : Liquid |
| Odour | : Characteristic |
| Solubility (in water) | : Insoluble |
| Density | : 0,69 |
| Ph | : - |
| Color | : Transparent |
| Active | : - |



BRAKE CLEANER

It is used in automobiles, heavy vehicles, machinery and related products.

It quickly removes the oil, dirt and residue on oily and greasy surfaces of vehicle brake systems both disc and drum, engines, transmissions etc. besides any dried brake dust.

Suitable for general use.

It is not corrosive.

It dissolves even thick types of oil.

It takes effect in short time.

It contains ozone-friendly propellants that do not harm the environment.

INSTRUCTIONS ON HOW TO USE

Fill the product in any plastic container and spray it on the desired surface from a distance of 10-20 cm with the spray technique.

Dry the parts in open air or by wiping them with a cloth.

Repeat the process if necessary on very dirty areas.



| SIZE | QUANTITY OF BOXES | PRUDUCT NO |
|-------|-------------------|------------|
| 30 lt | 1 Pcs | 6020966 |

| NET WEIGHT | GROSS WEIGHT | PALLET x BOX |
|------------|--------------|--------------|
| 21 kg | 22,30 kg | 12x3 |

| | |
|-----------------------|------------------|
| Physical Appearance | : Liquid |
| Odour | : Characteristic |
| Solubility (in water) | : Insoluble |
| Density | : 0,69 |
| Ph | : - |
| Color | : Transparent |
| Active | : - |





BRAKE CLEANER

It is used in automobiles, heavy vehicles, machinery and related products.

It quickly removes the oil, dirt and residue on oily and greasy surfaces of vehicle brake systems both disc and drum, engines, transmissions etc. besides any dried brake dust.

Suitable for general use.

It is not corrosive.

It dissolves even thick types of oil.

It takes effect in short time.

It contains ozone-friendly propellants that do not harm the environment.

INSTRUCTIONS ON HOW TO USE

Fill the product in any plastic container and spray it on the desired surface from a distance of 10-20 cm with the spray technique.

Dry the parts in open air or by wiping them with a cloth.

Repeat the process if necessary on very dirty areas.



| SIZE | QUANTITY OF BOXES | PRUDUCT NO |
|-------|-------------------|------------|
| 60 lt | 1 Pcs | 6023387 |

| NET WEIGHT | GROSS WEIGHT | PALLET x BOX |
|------------|--------------|--------------|
| 42 kg | 47 kg | 9x3 |

| | |
|-----------------------|------------------|
| Physical Appearance | : Liquid |
| Odour | : Characteristic |
| Solubility (in water) | : Insoluble |
| Density | : 0,69 |
| Ph | : - |
| Color | : Transparent |
| Active | : - |





| SIZE | QUANTITY OF BOXES | PRUDUCT NO |
|--------|-------------------|------------|
| 500 ml | 24 Pcs | 6021796 |

| NET WEIGHT | GROSS WEIGHT | PALLET x BOX |
|------------|--------------|--------------|
| 345 g | 450 g | 10x7 |



ENGINE CLEANING SPRAY

It is a quick cleaning product to remove oil, grease and stubborn dirt. It is a wash-free engine cleaner, suitable for all engine types such as passenger cars, motorcycles, lawnmowers and so on.

It does not damage any part in the engine components. In addition to the cleaning process, it gives a shiny appearance and protects the engine surface.

Thanks to its superior content, it quickly and easily removes oil, grease and stubborn dirt from the engine. It easily reaches hard-to-reach points, penetrates and cleans easily.

Does not damage electronic circuits.

It gives no damage to rubber, plastic and painted surfaces. It does not contain silicone, it contains citrus essence.

INSTRUCTIONS ON HOW TO USE

Shake the product well before use. Apply the spray on the surface from a distance of 20 cm.

By applying the product on dirty surfaces, wait until it penetrates and makes the oil, grease and dirt flow.

The process can be repeated several times on very dirty and oily areas.

After dirt flows off from the surface, you can wash the engine with water or wipe it with a dry and clean cloth so that it gets a clean and shiny appearance.

If you prefer to wash the engine with water, we recommend you that dry it by using compressed air immediately afterwards.

Product residues that cannot be cleaned can cause smoke to form when the engine runs.

Never apply on a hot or running engine.



| | |
|-----------------------|---------------|
| Physical Appearance | : Liquid |
| Odour | : Lemon |
| Solubility (in water) | : Insoluble |
| Density | : 0,72 |
| Ph | : - |
| Color | : Transparent |
| Active | : - |



CARB & CHOKE CLEANER

Cleans the carburetor, throttle body, valve, interconnections and pistons.

Extends the life span of pieces. It clears the remaining formed over time.

Ensures efficient operation of fuel injection system. It prevents the engine from stopping.

It easily removes fuel waste and carbon residues formed in the injector nozzles and throat.

Ensures regular operation of the vehicle, reduces fuel consumption.

INSTRUCTIONS ON HOW TO USE

Shake well before using.

By removing the air filter between the intake manifold and the turbocharge, start your car at idle mode and wait for the engine to warm up.

By keeping the car around 2000 rpm, wait after applying the spray at short intervals (2-3 seconds) with the spray hose (probe) on dirty areas towards the intake manifold, do the cleaning by applying the entire product to last about 1/2.

Each time applied, the engine is kept idle until it reaches its normal operating phase.

At these phases, the engine can run without revving, the speed can increase or decrease.

Do not push the accelerator pedal when the speed drops.

Do not spray directly on the intercooler.

For best results, repeat the process until the product finishes.



| SIZE | QUANTITY OF BOXES | PRUDUCT NO |
|--------|-------------------|------------|
| 500 ml | 24 Pcs | 6020720 |

| NET WEIGHT | GROSS WEIGHT | PALLET x BOX |
|------------|--------------|--------------|
| 390 g | 495 g | 10x7 |

| | |
|-----------------------|------------------|
| Physical Appearance | : Liquid |
| Odour | : Characteristic |
| Solubility (in water) | : Insoluble |
| Density | : 0,93 |
| Ph | : - |
| Color | : Transparent |
| Active | : - |





| SIZE | QUANTITY OF BOXES | PRUDUCT NO |
|--------|-------------------|------------|
| 500 ml | 24 Pcs | 6020683 |

| NET WEIGHT | GROSS WEIGHT | PALLET x BOX |
|------------|--------------|--------------|
| 420 g | 525 g | 10x7 |



CATALYTIC CONVERTER CLEANER

Soot deposited in the microchambers of the catalytic converter prevents the exhaust gas outlet and creates back pressure.

Our product ensures that all pollutants such as soot and varnish that reduce the performance of the vehicle and increase fuel consumption are removed from the catalytic converter and particulate filter.

Its patented special formula is detergent-based and a foamy chemical.

Since it does not contain solvent and other derivatives, there is no temporary or permanent damage to the catalytic converter, lambda sensor, particulate filter and any part of the engine. It is 100 % safe.

INSTRUCTIONS ON HOW TO USE

Shake the product well before use. Open the lid.

Connect the additional hose with the product to the actuator on the product head.

Remove the pressure or temperature sensor on the catalytic converter.

Through this gap, insert the end of the hose of the product. Spray all the product mixture into the filter.

Reconnect the sensor and wait 20 minutes for the mixture to go into the filter.

After the process is finished, start the vehicle and keep it stable at 2500 rpm, paying attention to the temperature, or perform the operation manually with a test device or by making a test drive.

After these operations, examine the fault codes.

Reset faults if necessary.

One bottle of cleaner is enough for a catalytic converter.

Repeat the process on very dirty filters.



| | |
|-----------------------|------------------|
| Physical Appearance | : Liquid |
| Odour | : Characteristic |
| Solubility (in water) | : Soluble |
| Density | : 1,12 |
| Ph | : 8 |
| Color | : Yellow |
| Active | : - |



| SIZE | QUANTITY OF BOXES | PRUDUCT NO |
|--------|-------------------|------------|
| 500 ml | 24 Pcs | 6020683 |

| NET WEIGHT | GROSS WEIGHT | PALLET x BOX |
|------------|--------------|--------------|
| 420 g | 525 g | 10x7 |



DIESEL PARTICULATE FILTER CLEANER

It is used in diesel vehicles to remove carbon and ash residue from the particulate filter.

Dissolves and removes carbon residues accumulated in particulate filters.

It provides cleaning without the need to disassemble the particulate filter.

It reduces costs because a new filter will not need to be installed. (Depending on the state of the particulate filter)

It is used to address failures and performance degradation caused by contaminated diesel particulate filters.

After the process, the filters are restored to full capacity.

INSTRUCTIONS ON HOW TO USE

Shake the product well before use.

Open the lid. Connect the additional hose with the product to the actuator on the product head.

Remove the pressure or temperature sensor on the particulate filter.

Through this gap, insert the end of the hose of the product. Spray all the product mixture into the filter.

Reconnect the sensor and wait 20 minutes for the mixture to go into the filter.

After the process is finished, start the car and run it at 2500 rpm, paying attention to the temperature, or perform the operation manually with a tester or by performing a test drive.

After these operations, examine the fault codes. Reset faults if necessary.

One bottle of cleaner is enough for a particulate filter. Repeat the process on very dirty filters.



| | |
|-----------------------|------------------|
| Physical Appearance | : Liquid |
| Odour | : Characteristic |
| Solubility (in water) | : Soluble |
| Density | : 1,12 |
| Ph | : 8 |
| Color | : Yellow |
| Active | : - |

ASPHALT-TAR PITCH AND RESIN CLEANER

It removes asphalt, tar and resin residues on vehicles, vehicle bodies, glass, plastic and rubber surfaces without any remaining.

Thanks to its powerful new formula it quickly cleans off tar lubricating grease, rust protection agent, resin, dirt and paraffin-based car candles from car body parts and machine surfaces.

INSTRUCTIONS ON HOW TO USE

Shake the product well before use.

Apply the spray on the desired surface at a distance of 20 cm.

Wait until the product penetrates and makes the oil, grease and dirt flow.

The process can be repeated a few times on very dirty and oily areas.

After dirt flows off from the surface, wipe with a dry and clean cloth.



| SIZE | QUANTITY OF BOXES | PRUDUCT NO |
|--------|-------------------|------------|
| 500 ml | 24 Pcs | 6020027 |

| NET WEIGHT | GROSS WEIGHT | PALLET x BOX |
|------------|--------------|--------------|
| 340 g | 445 g | 10x7 |

| | |
|-----------------------|---------------|
| Physical Appearance | : Liquid |
| Odour | : Lemon |
| Solubility (in water) | : Insoluble |
| Density | : 0,82 |
| Ph | : - |
| Color | : Transparent |
| Active | : - |





| SIZE | QUANTITY OF BOXES | PRUDUCT NO |
|------------|-------------------|--------------|
| 200 ml | 24 Pcs | 6020304 |
| NET WEIGHT | GROSS WEIGHT | PALLET x BOX |
| 125 g | 182 g | 14x8 |



CONTACT SPRAY - OIL FREE

It is used to clean electrical and electronic parts from dust, oil and other stains.

Because it is fast volatile, it does not leave any residue on the surface.

It provides resistance to external influences such as moisture, rust and corrosion.

It can be used on home appliances, garden systems, car door and trunk locks, car headlight holders' plugs and zippers, hinges, locks, curtain rails in the house as well as oil cleaning.

It helps solving problems in electrical and electronic circuits.

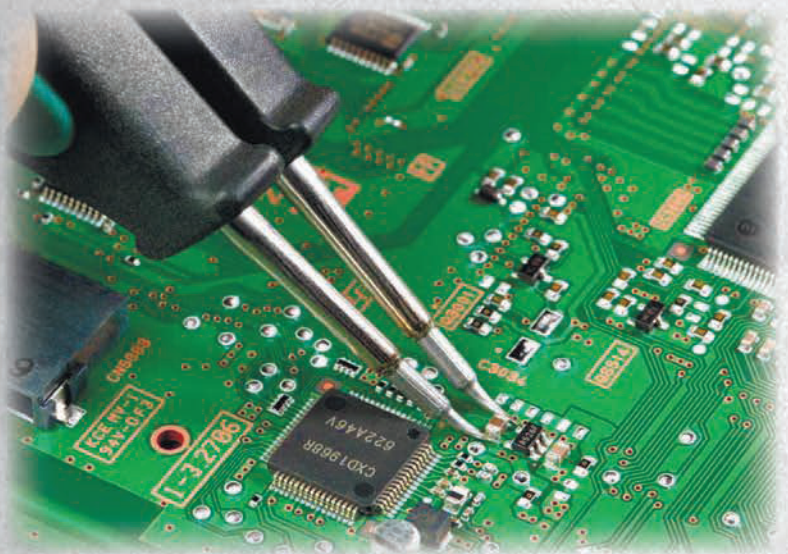
After cleaning the surface, the product with oil is preferred where lubrication is required again.

Periodic applications will extend life span of the pieces.

INSTRUCTIONS ON HOW TO USE

Shake well before using.

Apply the spray on the desired surface from a distance of 10-20 cm.



| | |
|-----------------------|------------------|
| Physical Appearance | : Liquid |
| Odour | : Characteristic |
| Solubility (in water) | : Insoluble |
| Density | : 0,69 |
| Ph | : - |
| Color | : Transparent |
| Active | : - |



| SIZE | QUANTITY OF BOXES | PRUDUCT NO |
|------------|-------------------|--------------|
| 500 ml | 24 Pcs | 6020737 |
| NET WEIGHT | GROSS WEIGHT | PALLET x BOX |
| 310 g | 415 g | 10x7 |



CONTACT SPRAY - OIL FREE

It is used to clean electrical and electronic parts from dust, oil and other stains.

Because it is fast volatile, it does not leave any residue on the surface.

It provides resistance to external influences such as moisture, rust and corrosion.

It can be used on home appliances, garden systems, car door and trunk locks, car headlight holders' plugs and zippers, hinges, locks, curtain rails in the house as well as oil cleaning.

It helps solving problems in electrical and electronic circuits.

After cleaning the surface, the product with oil is preferred where lubrication is required again.

Periodic applications will extend life span of the pieces.

INSTRUCTIONS ON HOW TO USE

Shake well before using.

Apply the spray on the desired surface from a distance of 10-20 cm.



| | |
|-----------------------|------------------|
| Physical Appearance | : Liquid |
| Odour | : Characteristic |
| Solubility (in water) | : Insoluble |
| Density | : 0,69 |
| Ph | : - |
| Color | : Transparent |
| Active | : - |



SILICONE MOLD RELEASE

It is used as an anti-adhesive, lubricant, cleaner and mold release agent in the textile, plastic, rubber and tire industries.

It is used as a mold release agent especially in octopus machines in the printing and printing industry.

It prevents sticking, squeaking and friction. It is odorless and colorless. It dries fast and is stain resistant.

It does not hold dust. It prevents the applied surface from stretching in hot weather, freezing and sticking in cold weather.

INSTRUCTIONS ON HOW TO USE

Shake the product.

Spray on the surface to be applied.

Makes lubrication on the applied surface.



| SIZE | QUANTITY OF BOXES | PRUDUCT NO |
|------------|-------------------|--------------|
| 500 ml | 24 Pcs | 6023196 |
| NET WEIGHT | GROSS WEIGHT | PALLET x BOX |
| 300 g | 405 g | 10x7 |



| | |
|-----------------------|------------------|
| Physical Appearance | : Liquid |
| Odour | : Characteristic |
| Solubility (in water) | : Insoluble |
| Density | : 0,70 |
| Ph | : - |
| Color | : Transparent |
| Active | : - |

BÖRFH



SILICONE SPRAY

It provides permanent protection, cleaning, maintenance, insulation and slipperiness on plastic and rubber surfaces.

It prevents abrasion on plastic and rubber parts, prevents squeaks and noises.

Especially provides convenience during assembling.

Visually beautifies the applied materials.

Protects vinyl and plastic coverings and electrical connections against moisture.

It has anti-static properties.

It is used for bumpers, slats, plastic rails, slots, door tires, rubber seals, rubber bellows and hoses.

INSTRUCTIONS ON HOW TO USE

Shake well before using.

Apply the spray on the desired surface from a distance of 10-20 cm.

Apply evenly on the cleaned surface, wipe it with a soft and clean cloth.



| SIZE | QUANTITY OF BOXES | PRUDUCT NO |
|------------|-------------------|--------------|
| 500 ml | 24 Pcs | 6020768 |
| NET WEIGHT | GROSS WEIGHT | PALLET x BOX |
| 300 g | 405 g | 10x7 |



| | |
|-----------------------|------------------|
| Physical Appearance | : Liquid |
| Odour | : Characteristic |
| Solubility (in water) | : Insoluble |
| Density | : 0,70 |
| Ph | : - |
| Color | : Transparent |
| Active | : - |



| SIZE | QUANTITY OF BOXES | PRUDUCT NO |
|------------|-------------------|--------------|
| 500 ml | 24 Pcs | 6023820 |
| NET WEIGHT | GROSS WEIGHT | PALLET x BOX |
| 320 g | 421 g | 10x7 |



PLASTIC PARTS RESTORATION

Renewing all plastic and rubber materials ensures that they regain their natural appearance on the first day.

It does not cause dusting.

Protects plastic floors against drying out.

The active all substances it contains are biodegradable.

suitable for all vehicles and types.

Plastic regenerator suitable for use on all plastic, vinyl and rubber trim components such as bumpers sills, door handles, rear view mirrors, tres around windows inside and outside of your vehicle.

INSTRUCTIONS ON HOW TO USE

Shake the product before use.

Spray an adequate amount onto the sponge and apply from right to left and then from top to bottom

Prevent water dripping within 5 days after applying the product.

In this way, the product will stick to the surface and will allow it to stay on the surface for a longer time



| | |
|-----------------------|------------------|
| Physical Appearance | : Liquid |
| Odour | : Characteristic |
| Solubility (in water) | : Insoluble |
| Density | : 0.75 |
| Ph | : - |
| Color | : Transparent |
| Active | : - |



GLASS CLEANER SPRAY

A white colored cleaning foam that does not flow even on vertical surfaces.

Cleans dried fly and insect residues and bird droppings.

It also cleans nicotine residues, oil and tire track without leaving any trace.

INSTRUCTIONS ON HOW TO USE

Shake the product well before the usage.

Open the cap.

Spray evenly over the surface at close range.

Let it act for a short time on difficult dirt.

Then wipe it with a clean and dry cloth.

Do not spray on hot surfaces, do not apply under direct sunlight.

It does not contain silicone and AOX.



| SIZE | QUANTITY OF BOXES | PRUDUCT NO |
|--------|-------------------|------------|
| 500 ml | 24 Pcs | 6023738 |

| NET WEIGHT | GROSS WEIGHT | PALLET x BOX |
|------------|--------------|--------------|
| | | 10x7 |



Physical Appearance

Odour

Solubility (in water)

Density

Ph

Color

Active



| SIZE | QUANTITY OF BOXES | PRUDUCT NO |
|------------|-------------------|--------------|
| 500 ml | 24 Pcs | 6023103 |
| NET WEIGHT | GROSS WEIGHT | PALLET x BOX |
| 390 g | 495 g | 10x7 |



EGR VALVE CLEANING SPRAY

GR Valve System Cleaning Spray has been developed for cleaning of air suction system of diesel engines, air flow sensor, suction manifold, EGR and turbo systems.

Its usage is recommended for suction manifold of diesel engines, intake valves, EGR valve and turbos at every service.

Thanks to its powerful spray feature, cleaning process is performed efficiently.

It is easy to use; cleaning process is realized within 5 minutes without any need to disassemble parts.

It prevents irregular running and stalling of the engine.

It improves fuel economy and motor performance.

It does not harm diesel particle filter (DPF) and catalytic converter.

INSTRUCTIONS ON HOW TO USE

Start the engine and wait for it to warm up.

Remove the air filter between the suction manifold and turbocharger/intercooler.

Run the engine at idle. With the engine hot, spray the EGR Valve System Cleaner Spray for 3 seconds to the intake manifold at intervals of 1 to 2 minutes.

Do not spray the product to intercooler directly.

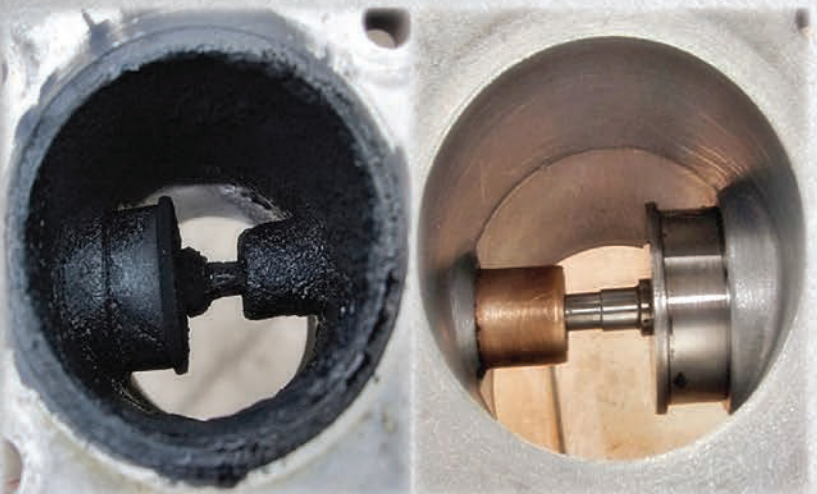
After each spray, wait until engine comes back to its cranking speed and running regularly.

Engine speed may increase or decrease during spraying due to changing of air/fuel ratio and adding of liquid.

Diesel chug may increase.

Do not press on accelerator when engine speed decreases.

Continue with the process until EGR Valve System Cleaning Spray is finished.



| | |
|-----------------------|------------------|
| Physical Appearance | : Liquid |
| Odour | : Characteristic |
| Solubility (in water) | : Insoluble |
| Density | : 0,96 |
| Ph | : |
| Color | : Transparent |
| Active | : |



| SIZE | QUANTITY OF BOXES | PRUDUCT NO |
|------------|-------------------|--------------|
| 500 ml | 24 Pcs | 6023721 |
| NET WEIGHT | GROSS WEIGHT | PALLET x BOX |
| 350 g | 460 g | 10x7 |



UNDERBODY COATING

The powder spray provides a viscoelastic and permanent coating on the underside of the wheel boxes of machinery and vehicles and all types of motor vehicles.

Under the floor; It is protected against stone impacts, spray salts, mechanical and chemical effects such as water, rust and climatic effects.

By adhering perfectly to metal, it provides high wear resistance and excellent corrosion protection.

It insulates sound.

Provides permanent elasticity.

It does not hold water.

It is resistant to climatic effects.

Resistant to mild bases and acids.

INSTRUCTIONS ON HOW TO USE

Surface; It should be clean and dry, free of oil and rust.

Shake the product before using it.

Apply the product evenly from a distance of about 30 cm.

The applied area can be painted after 2 hours.

For 2C paints, we recommend applying a primer first.



| | |
|-----------------------|------------------|
| Physical Appearance | : Liquid |
| Odour | : Characteristic |
| Solubility (in water) | : Insoluble |
| Density | : 0,96 |
| Ph | : |
| Color | : Black |
| Active | : |



| SIZE | QUANTITY OF BOXES | PRUDUCT NO |
|------------|-------------------|--------------|
| 400 ml | 24 Pcs | 6023240 |
| NET WEIGHT | GROSS WEIGHT | PALLET x BOX |
| 255 g | 355 g | 10x8 |



ETER ENGINE START SPRAY

It is a spray that enables the engine to run by eliminating the running problem seen in vehicles in cold winter months.

Gasoline, Diesel and LPG It facilitates the ignition in engines.

It can be used in Cars, Trucks, Generators and all kinds of engines.

INSTRUCTIONS ON HOW TO USE

During engine ignition, never spray the spray.

Holding the bottle upright, squeeze it into the carburetor or directly against the air cleaner or suction tube for 3 seconds.

Press the starter by closing the covers.

Repeat the process in very cold weather, engines that do not run for a long time.



| | |
|-----------------------|------------------|
| Physical Appearance | : Liquid |
| Odour | : Characteristic |
| Solubility (in water) | : Insoluble |
| Density | : 0.70 |
| Ph | : |
| Color | : Transparent |
| Active | : |



| SIZE | QUANTITY OF BOXES | PRUDUCT NO |
|------------|-------------------|--------------|
| 500 ml | 24 Pcs | 6020744 |
| NET WEIGHT | GROSS WEIGHT | PALLET x BOX |
| 330 g | 435 g | 10x7 |



LIQUID GREASE MULTI-PURPOSE SPRAY

It is suitable for use to lubricate areas subject to high-pressure such as steel wire with hose, transfer arms, switches, gas or clutches and etc.

It has excellent adhesion and very good infiltration properties with medium viscosity, resistant to high pressures.

It protects against corrosion and abrasion in the long term thanks to the oil layer with exceptional infiltration properties.

It has very good pressure and force transfer property. It has very good fit to material 0 and X.

It is resistant to splash water, salt water and weak acids. Silicone, resin and acid free.

It is used safely in many industrial areas, as well as on all surfaces requiring lubrication at home and workplaces.

INSTRUCTIONS ON HOW TO USE

Shake well before using.

Attach the red straw supplied with the spray can to the actuator.

Apply the spray on the desired surface from a distance of 10-20 cm.



| | |
|-----------------------|-------------------------|
| Physical Appearance | : Liquid |
| Odour | : Characteristic |
| Solubility (in water) | : Insoluble |
| Density | : 0,74 |
| Ph | : - |
| Color | : Transparent Yellowish |
| Active | : - |



RUST REMOVER LUBRICANT SPRAY

It is used on all metal surfaces that are stuck by rust caused by water and humidity.

Stuck bolt nuts, hand tools, land and sea hunting materials, bicycles, motorcycles, door and cabinet hinges and all such metal pieces are the main areas of use.

After removing rust, it creates a thin layer of film, delaying rust in later stages.

It does not damage plastic surfaces. It contains ozone-friendly propellant gas that do not harm the environment.

INSTRUCTIONS ON HOW TO USE

Shake well before using.

Apply the spray on the desired surface from a distance of 10-20 cm.

Wait for to penetrate into rust and to loosen and remove of it.

Repeat the process several times on very rusty areas.



| SIZE | QUANTITY OF BOXES | PRUDUCT NO |
|--------|-------------------|------------|
| 200 ml | 24 Pcs | 6020652 |

| NET WEIGHT | GROSS WEIGHT | PALLET x BOX |
|------------|--------------|--------------|
| 132 g | 192 g | 14x8 |



| | |
|-----------------------|------------------|
| Physical Appearance | : Liquid |
| Odour | : Characteristic |
| Solubility (in water) | : Insoluble |
| Density | : 0,73 |
| Ph | : - |
| Color | : Light Amber |
| Active | : - |



RUST REMOVER LUBRICANT SPRAY

It is used on all metal surfaces that are stuck by rust caused by water and humidity.

Stuck bolt nuts, hand tools, land and sea hunting materials, bicycles, motorcycles, door and cabinet hinges and all such metal pieces are the main areas of use.

After removing rust, it creates a thin layer of film, delaying rust in later stages.

It does not damage plastic surfaces. It contains ozone-friendly propellant gas that do not harm the environment.

INSTRUCTIONS ON HOW TO USE

Shake well before using.

Apply the spray on the desired surface from a distance of 10-20 cm.

Wait for to penetrate into rust and to loosen and remove of it.

Repeat the process several times on very rusty areas.



| SIZE | QUANTITY OF BOXES | PRUDUCT NO |
|--------|-------------------|------------|
| 500 ml | 24 Pcs | 6020706 |

| NET WEIGHT | GROSS WEIGHT | PALLET x BOX |
|------------|--------------|--------------|
| 320 g | 425 g | 10x7 |



| | |
|-----------------------|------------------|
| Physical Appearance | : Liquid |
| Odour | : Characteristic |
| Solubility (in water) | : Insoluble |
| Density | : 0,73 |
| Ph | : - |
| Color | : Light Amber |
| Active | : - |



CHAIN LUBRICANT SPRAY

It is a high-quality grease lubricant that can operate at heavy dynamic loads, resistant to cold and heat.

It is used on mechanisms with chain or sliding and working machines.

It has good friction specification.

In addition to lubricating of wire and rope structures (such as elevators), it has a protective effect.

Also suitable for chains used in motorcycles.

It has a long-time effect on internal and external lubrication on chains, chain gears, door hinges, rails, ball bearings, rings, O and X rings of wire ropes and all kinds of dynamic joints.

It can work from -40 °C to +200 °C.

It does not drip, it has a high adhesion feature on the surface.

Prevents corrosion.

It has moisture and water repellent properties.

INSTRUCTIONS ON HOW TO USE

Shake well before using.

Attach the red pipette supplied with the spray can to the actuator.

Apply the spray on the desired surface from a distance of 10-20 cm.



| SIZE | QUANTITY OF BOXES | PRUDUCT NO |
|------------|-------------------|--------------|
| 200 ml | 24 Pcs | 6020676 |
| NET WEIGHT | GROSS WEIGHT | PALLET x BOX |
| 130 g | 189 g | 14x8 |



| | |
|-----------------------|-------------------------|
| Physical Appearance | : Liquid |
| Odour | : Characteristic |
| Solubility (in water) | : Insoluble |
| Density | : 0,81 |
| Ph | : - |
| Color | : Transparent Yellowish |
| Active | : - |

BÖRFH



CHAIN LUBRICANT SPRAY

It is a high-quality grease lubricant that can operate at heavy dynamic loads, resistant to cold and heat.

It is used on mechanisms with chain or sliding and working machines.

It has good friction specification.

In addition to lubricating of wire and rope structures (such as elevators), it has a protective effect.

Also suitable for chains used in motorcycles.

It has a long-time effect on internal and external lubrication on chains, chain gears, door hinges, rails, ball bearings, rings, O and X rings of wire ropes and all kinds of dynamic joints.

It can work from -40 °C to +200 °C.

It does not drip, it has a high adhesion feature on the surface.

Prevents corrosion.

It has moisture and water repellent properties.

INSTRUCTIONS ON HOW TO USE

Shake well before using.

Attach the red pipette supplied with the spray can to the actuator.

Apply the spray on the desired surface from a distance of 10-20 cm.



| SIZE | QUANTITY OF BOXES | PRUDUCT NO |
|------------|-------------------|--------------|
| 500 ml | 24 Pcs | 6020751 |
| NET WEIGHT | GROSS WEIGHT | PALLET x BOX |
| 330 g | 435 g | 10x7 |



| | |
|-----------------------|-------------------------|
| Physical Appearance | : Liquid |
| Odour | : Characteristic |
| Solubility (in water) | : Insoluble |
| Density | : 0,81 |
| Ph | : - |
| Color | : Transparent Yellowish |
| Active | : - |



INJECTOR REMOVER AND CLEANER SPRAY

Assists in professional disassembly of injectors, spark plugs and glow plugs that boil in the block and are difficult to disassemble.

It melts and destroys Rust, which is very difficult to remove due to rusted, stubborn oil residues, dirt and corrosion.

Removes oil residues and dirt.

It allows disassembly without damaging the engine and parts.

Cleans the slots of the injector, spark plug and glow plugs.

INSTRUCTIONS ON HOW TO USE

Shake the spray well before use.

Squeeze around the injectors and spark plugs that have not been removed and wait for 15-30 minutes.

Easily disassemble.



| SIZE | QUANTITY OF BOXES | PRUDUCT NO |
|------------|-------------------|--------------|
| 500 ml | 24 Pcs | 6023806 |
| NET WEIGHT | GROSS WEIGHT | PALLET x BOX |
| 337 g | 447 g | 10x7 |



| | |
|-----------------------|----------------------|
| Physical Appearance | : Opaque |
| Odour | : Characteristic |
| Solubility (in water) | : Insoluble |
| Density | : 0.80 |
| Ph | : - |
| Color | : Transparent Yellow |
| Active | : - |



MULTI -40 MULTI-PURPOSE SPRAY

It is a multi-purpose lubricant and rust remover with superior penetration properties consisting of low molecular weight components used for easy disassembly of oxidized and welded surfaces or for protection against rust formation of machine elements.

It dissolves all rusted bolts, nuts, couplings, hinges, locks, vehicle and motorcycle parts and industrial equipment and provides excellent protection against the harmful effects of watery and humid environments.

- * Protects against rust.
- * Prevents moisture formation.
- * Untightens stuck metal.
- * Cleans and protects.
- * Prevents friction.
- * Dissolves all kinds of rust.
- * Oily contact spray.

INSTRUCTIONS ON HOW TO USE

Shake well before using.

Attach the red straw supplied with the spray can to the actuator.

Apply the spray on the desired surface from a distance of 10-20 cm.

Apply from the distance of 20 cm on the piece that is disassembled or that is desired to be protected against rust.

Before starting the disassembly process, wait for a short time to penetrate the capillary cavities.



| SIZE | QUANTITY OF BOXES | PRUDUCT NO |
|--------|-------------------|------------|
| 150 ml | 12 Pcs | 6023578 |

| NET WEIGHT | GROSS WEIGHT | PALLET x BOX |
|------------|--------------|--------------|
| 95 g | 145 g | 31x11 |



| | |
|-----------------------|---------------|
| Physical Appearance | : Liquit |
| Odour | : Orange |
| Solubility (in water) | : Insoluble |
| Density | : 0,73 |
| Ph | : - |
| Color | : Light amber |
| Active | : - |



| SIZE | QUANTITY OF BOXES | PRUDUCT NO |
|--------|-------------------|------------|
| 200 ml | 36 Pcs | 6020669 |

| NET WEIGHT | GROSS WEIGHT | PALLET x BOX |
|------------|--------------|--------------|
| 132 g | 189 g | 10x8 |



MULTI -40 MULTI-PURPOSE SPRAY

It is a multi-purpose lubricant and rust remover with superior penetration properties consisting of low molecular weight components used for easy disassembly of oxidized and welded surfaces or for protection against rust formation of machine elements.

It dissolves all rusted bolts, nuts, couplings, hinges, locks, vehicle and motorcycle parts and industrial equipment and provides excellent protection against the harmful effects of watery and humid environments.

- * Protects against rust.
- * Prevents moisture formation.
- * Untightens stuck metal.
- * Cleans and protects.
- * Prevents friction.
- * Dissolves all kinds of rust.
- * Oily contact spray.

INSTRUCTIONS ON HOW TO USE

Shake well before using.

Attach the red straw supplied with the spray can to the actuator.

Apply the spray on the desired surface from a distance of 10-20 cm.

Apply from the distance of 20 cm on the piece that is disassembled or that is desired to be protected against rust.

Before starting the disassembly process, wait for a short time to penetrate the capillary cavities.



| | |
|-----------------------|---------------|
| Physical Appearance | : Liquit |
| Odour | : Orange |
| Solubility (in water) | : Insoluble |
| Density | : 0,73 |
| Ph | : - |
| Color | : Light amber |
| Active | : - |



MULTI -40 MULTI-PURPOSE SPRAY

It is a multi-purpose lubricant and rust remover with superior penetration properties consisting of low molecular weight components used for easy disassembly of oxidized and welded surfaces or for protection against rust formation of machine elements.

It dissolves all rusted bolts, nuts, couplings, hinges, locks, vehicle and motorcycle parts and industrial equipment and provides excellent protection against the harmful effects of watery and humid environments.

- * Protects against rust.
- * Prevents moisture formation.
- * Untightens stuck metal.
- * Cleans and protects.
- * Prevents friction.
- * Dissolves all kinds of rust.
- * Oily contact spray.

INSTRUCTIONS ON HOW TO USE

Shake well before using.

Attach the red straw supplied with the spray can to the actuator.

Apply the spray on the desired surface from a distance of 10-20 cm.

Apply from the distance of 20 cm on the piece that is disassembled or that is desired to be protected against rust.

Before starting the disassembly process, wait for a short time to penetrate the capillary cavities.



| SIZE | QUANTITY OF BOXES | PRUDUCT NO |
|--------|-------------------|------------|
| 400 ml | 12 Pcs | 6020713 |

| NET WEIGHT | GROSS WEIGHT | PALLET x BOX |
|------------|--------------|--------------|
| 265 g | 365 g | 10x8 |



| | |
|-----------------------|---------------|
| Physical Appearance | : Liquit |
| Odour | : Orange |
| Solubility (in water) | : Insoluble |
| Density | : 0,73 |
| Ph | : - |
| Color | : Light amber |
| Active | : - |



| SIZE | QUANTITY OF BOXES | PRUDUCT NO |
|------------|-------------------|--------------|
| 400 ml | 24 Pcs | 6023066 |
| NET WEIGHT | GROSS WEIGHT | PALLET x BOX |
| 280 g | 398 g | 6x8 |



MDF KIT ACTIVATOR

It is a two-component fast adhesive.

The activator prevents the adhesive from being absorbed by the surface, increasing the adhesion strength and accelerating adhesion.

It is used for bonding wood profiles, MDF, rubber, fiber-board, plastic and rubber, repairing and fixing wooden parts.

INSTRUCTIONS ON HOW TO USE

Shake well before using.

Apply the spray on the desired surface from a distance of 10-20 cm.

The surfaces to be glued should be dry, clean, free of dust and oil.

The activator should be sprayed vertically to the surface from a distance of 20 cm.

After waiting for 5 seconds, glue is applied to the other surface then the surfaces are brought together.

Adhesion occurs within 10 seconds at a temperature of 20 °C.



| | |
|-----------------------|------------------|
| Physical Appearance | : Liquid |
| Odour | : Characteristic |
| Solubility (in water) | : Insoluble |
| Density | : 0,69 |
| Ph | : - |
| Color | : Transparent |
| Active | : - |

BÖRFH



| SIZE | QUANTITY OF BOXES | PRUDUCT NO |
|------------|-------------------|--------------|
| 200 ml | 24 Pcs | 6022625 |
| NET WEIGHT | GROSS WEIGHT | PALLET x BOX |
| 137 g | 216 g | 9x9 |



MDF KIT ACTIVATOR

It is a two-component fast adhesive.

The activator prevents the adhesive from being absorbed by the surface, increasing the adhesion strength and accelerating adhesion.

It is used for bonding wood profiles, MDF, rubber, fiber-board, plastic and rubber, repairing and fixing wooden parts.

INSTRUCTIONS ON HOW TO USE

Shake well before using.

Apply the spray on the desired surface from a distance of 10-20 cm.

The surfaces to be glued should be dry, clean, free of dust and oil.

The activator should be sprayed vertically to the surface from a distance of 20 cm.

After waiting for 5 seconds, glue is applied to the other surface then the surfaces are brought together.

Adhesion occurs within 10 seconds at a temperature of 20 °C.



| | |
|-----------------------|------------------|
| Physical Appearance | : Liquid |
| Odour | : Characteristic |
| Solubility (in water) | : Insoluble |
| Density | : 0,69 |
| Ph | : - |
| Color | : Transparent |
| Active | : - |

KALİTE BELGELERİMİZ
OUR QUALITY CERTIFICATES



Kaliteyi ekonomik fiyata pazara sunan, 32 yıldır sektörde güçlü bir ÜRETİCİYİZ.

We are a strong MANUFACTURER in the sector for 32 years, offering quality to the market with economical prices.

300 den fazla ürün çeşidi, 10.000 den fazla formülasyonlarımızla daima YANINIZDAYIZ.

We are always with you with more than 300 product types and more than 10.000 formulations.

30'dan fazla yerli ve yabancı markanın, üreticisi olarak birlikte GÜÇLÜYÜZ.

As a manufacturer of more than 30 domestic and foreign brands, we are STRONG together.

Sektörde TUV SUD ISO 9001: 2015 belgeli TEK FİRMAYIZ.

WE ARE THE ONLY TUV SUD ISO 9001: 2015 certified company in the sector.

**Şimdilik 40 dan fazla ülkede,
pek yakında tüm Dünya' dayız.**

**Currently in more than 40 countries,
soon we will be all over the world.**



BÖRFH KİMYA SAN. A.Ş.



FIND me on facebook
Börfh Türkiye



FOLLOW me on instagram
borfhshop



FOLLOW me on youtube
Börfh Official



TEXT me online
info@basarikimya.com



CONTACT me on whatsapp
+90 530 516 59 86



CALL me at the office
**+90 216 309 99 51
+90 216 309 99 52**



VISIT me online
www.borfh.com



**Cumhuriyet Mh. Meryem Sk.
No: 5 Kartal/İSTANBUL
PK: 34876**