



ELKOSO[®]

AUTOMOTIVE MANUFACTURING SOLUTIONS



HEAVY DUTY INJECTOR CONTROL VALVE

Reliable, high-performance injector control valves designed for maximum durability and efficiency in heavy-duty applications

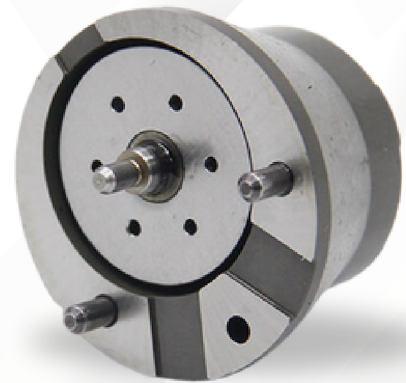


www.elkoso.tech

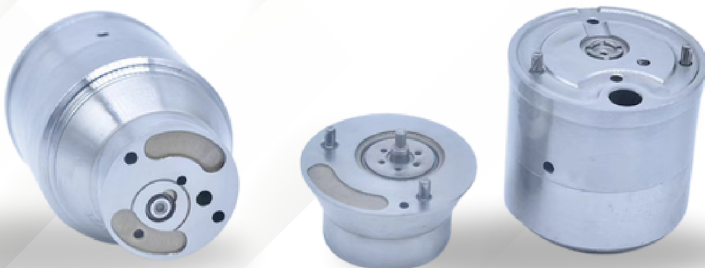


ELKOSO manufactures heavy-duty injector control valves specifically designed for high-performance applications in heavy-duty diesel engines. These components are integral to the operation of common rail fuel injection systems in larger vehicles and machinery, such as trucks, buses, and industrial engines.

Our heavy-duty injector control valves are crafted with precision engineering and made from high-quality materials to ensure durability and reliability in the most demanding environments. By delivering consistent and precise fuel control, these valves help enhance the efficiency and performance of diesel engines, leading to improved fuel economy and reduced emissions. This makes them an ideal choice for operators looking to optimize their fleet's performance while meeting stringent environmental regulations.



DAF



Additionally, **ELKOSO's** commitment to innovation and quality means that our injector control valves undergo rigorous testing and quality control processes. This ensures that every valve not only meets but exceeds industry standards, providing our customers with products they can trust. With our extensive experience in the automotive industry and a focus on customer satisfaction, **ELKOSO** is dedicated to delivering solutions that support the evolving needs of heavy-duty engine applications around the world.



ELKOSO[®]

AUTOMOTIVE MANUFACTURING SOLUTIONS



HEADQUARTERS

Bucharest, District 5, 7
Intrarea Bolboci Str.,
Office 52.
Romania

+40 312298408

info@elkoso.tech

ADMINISTRATION

Monastiriou 172
Menemeni, 54628
Thessaloniki
Greece

+30 2310 540231

office@elkoso.tech



www.elkoso.tech