

# CROSSBARS

CROSSBARS

CROSSBARS

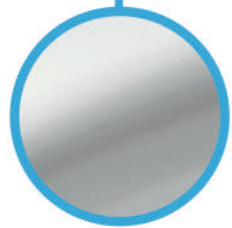
CROSSBARS

# ELEGANCE

## CROSSBARS

As the name indicates, our Elegance crossbars provide practicality without spoiling the vehicle's elegant look. They are available in two colors, garnishing their reliable and robust aluminum bars through flawless anodizing.

Elegance crossbars are precisely made to fit between the vehicle's raised roof rails. Its feet are made of Polyamide 6 GF30 plastic and EPDM endings to ensure a maximum fixation to the roof rails.



Aluminum

EPDM

Polyamide 6 GF30



**TUV Approved**



**Carrying Capacity**



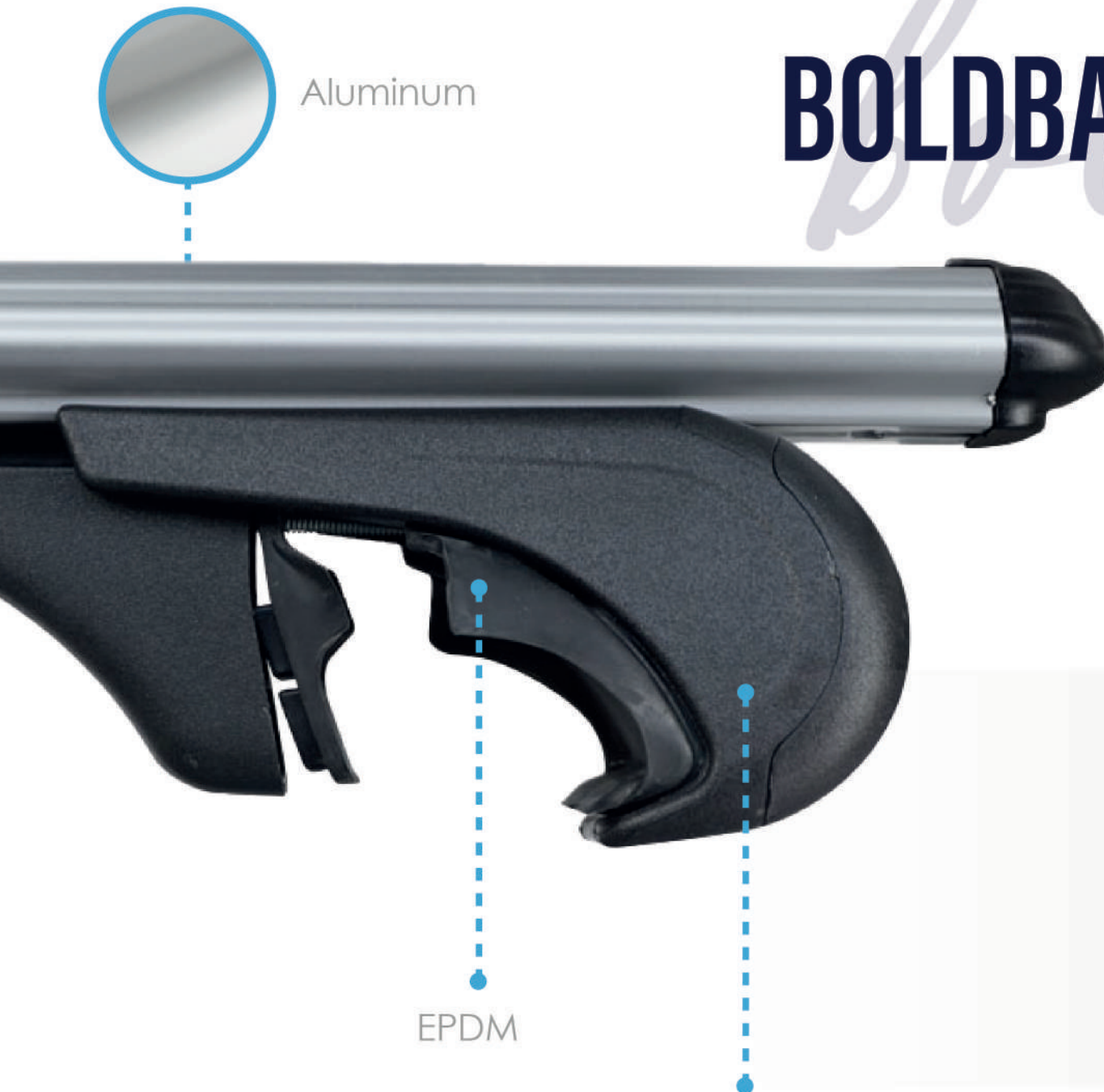
**Two Color Options**





# BOLDBAR ALPHA (V1)

## CROSSBARS



Aluminum

EPDM

Polyamide 6 GF30

Boldbar Alpha V1 crossbars are easily installed and removed from the raised roof rails. They are available in two colors made through flawless anodizing.

Boldbar Alpha V1 crossbars are adjustable to the width of the vehicle's roof; they come in five different lengths (S, M, L, XL, XXL) to cover all car models with raised rails. Feet made of Polyamide 6 GF30 plastic and EPDM endings and including an anti-theft lock system ensure a maximum fixation to the roof rails.



**TUV Approved**



**Carrying Capacity**



**Two Color Options**

OMTEC AUTO ACCESSORIES

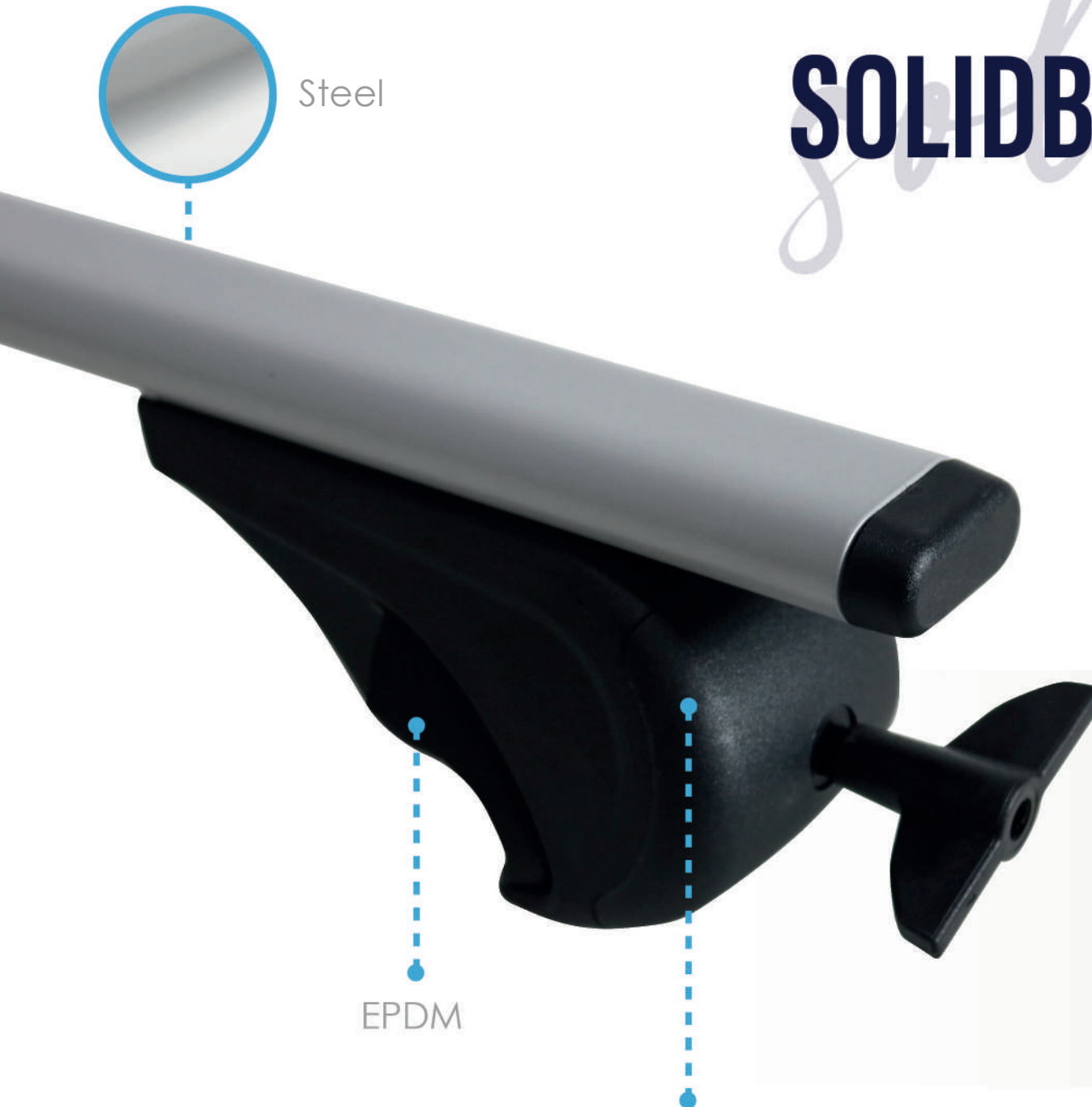
# SOLIDBAR ALPHA (V1)

## CROSSBARS

Solidbar Alpha crossbars are suitable for cars with raised roof rails. The profiles are made of steel, guaranteeing a maximum load bearing. They come in two color options, Grey and Black.

Like the Boldbar Alpha V1, the Solidbar Alpha (V1) crossbars are adjustable to the width of the vehicle's roof; they come in five different lengths (S, M, L, XL, XXL) to cover all car models with raised rails.

Feet are made of Polyamide 6 GF30 and EPDM endings to ensure a safe fixation to the roof rails. The crossbars come with anti-theft locks (Star Key only).



Steel

EPDM

Polyamide 6 GF30

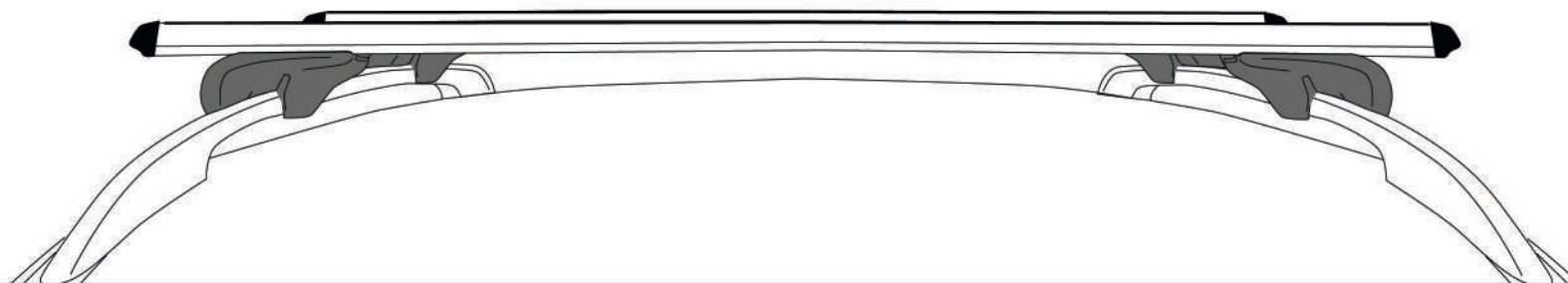
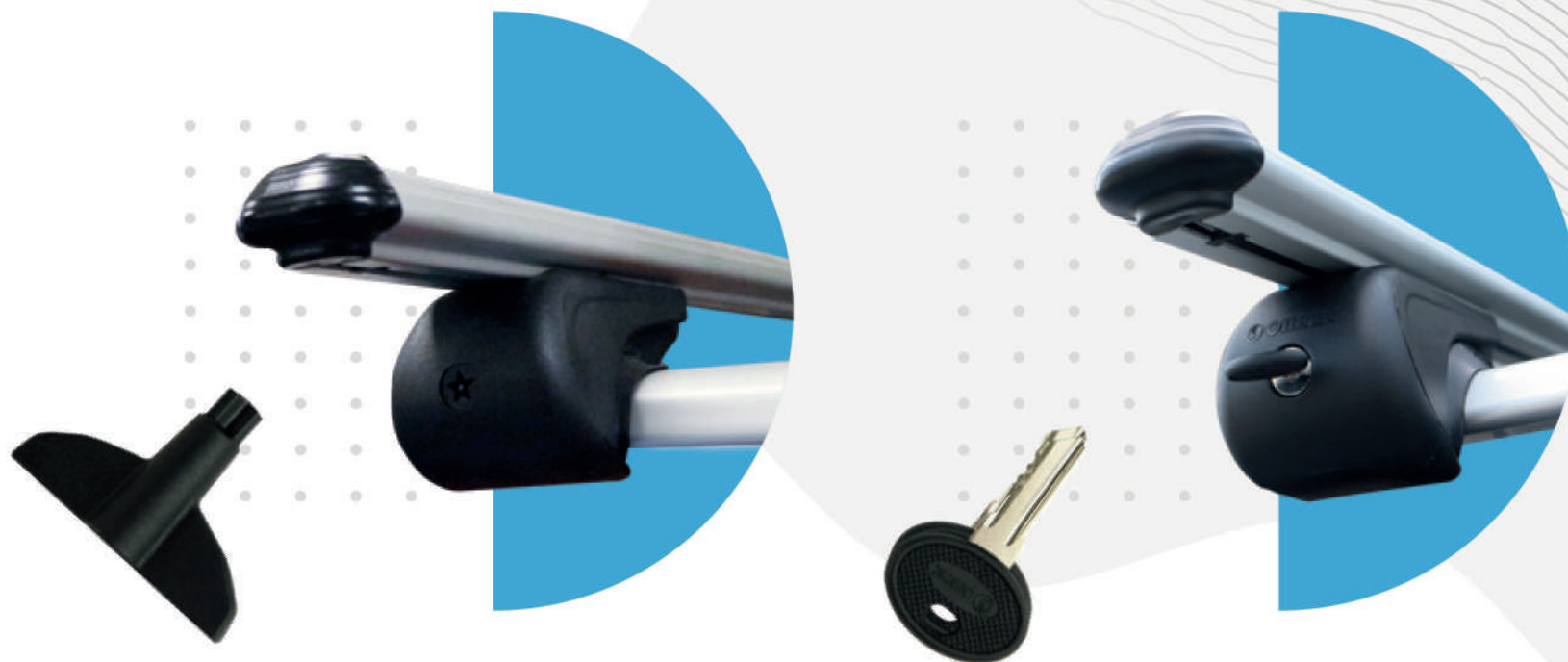


**Carrying Capacity**



**Two Color Options**

OMTEC AUTO ACCESSORIES



Two lock types are available: A metal lock with a metal key and a Plastic lock with a plastic key.



# BOLDBAR BETA (V2)

## CROSSBARS

Boldbar Beta V2 crossbars are easily installed and removed from the flush side rails. They are available in two colors made through flawless anodizing, silver and black.

Boldbar Beta V2 crossbars are adjustable to the width of the vehicle's roof; they come in five different lengths (S, M, L, XL, XXL) to cover all car models with flush side rails. Feet made of Polyamide 6 GF30 plastic and EPDM endings system ensure a maximum fixation to the roof rails. The crossbars come with anti-theft locks.



Aluminum



EPDM



Polyamide 6 GF30



**Carrying Capacity**



**Two Color Options**

OMTEC AUTO ACCESSORIES

# SOLIDBAR BETA (V2)

## CROSSBARS

Solidbar Beta crossbars are suitable for cars with flush rails. The profiles are made of steel, guaranteeing a maximum load bearing. They come in two color options, Grey and Black.

Like the Boldbar Beta V2, the Solidbar Beta (V2) crossbars are adjustable to the width of the vehicle's roof; they come in four different lengths (S, M, L, XL) to cover all car models with raised rails.

Feet are made of Polyamide 6 GF30 and EPDM endings to ensure a safe fixation to the roof rails. The crossbars come with anti-theft locks (Star Key only).



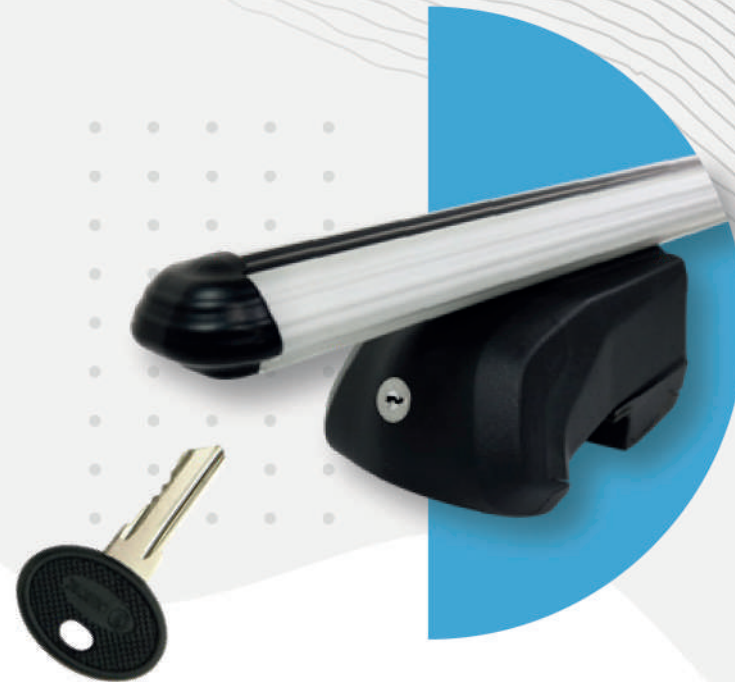
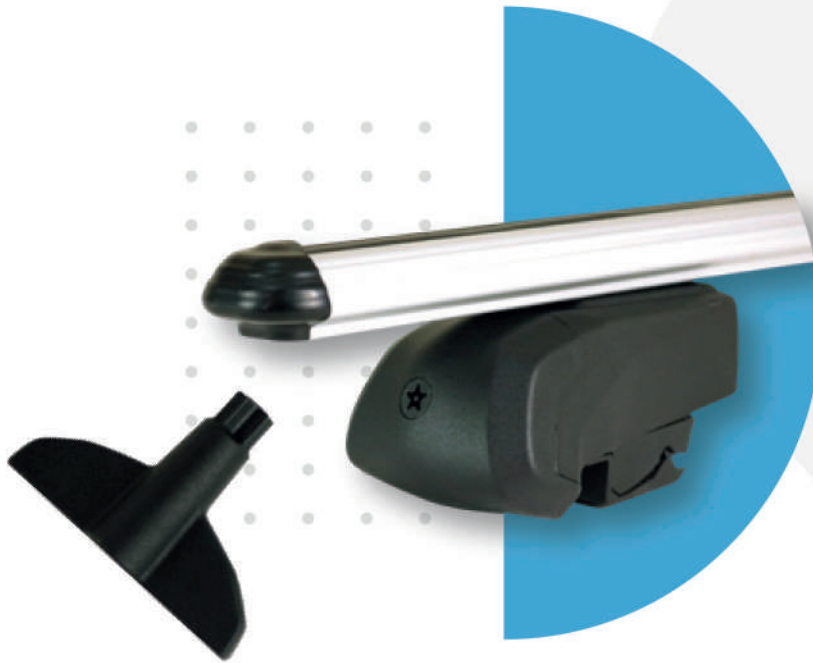
**Carrying Capacity**



**Two Color Options**

OMTEC AUTO ACCESSORIES





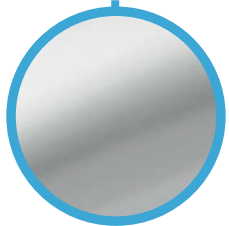
Two lock types are available: A metal lock with a metal key and a Plastic lock with a plastic key.

# ELEGANCE V2

## CROSSBARS

As the name indicates, our Elegance V2 crossbars provide practicality without spoiling the vehicle's elegant look. They are available in two colors coating the aluminum bars through anodizing.

Elegance V2 crossbars are a blend of style and security. Perfectly designed for Flush Side Rails, these crossbars offer a sleek and seamless look that complements the aesthetic of your ride. Durable Polyamide 6 GF30 plastic and EPDM endings ensure a secure fit. Enhanced with an anti-theft lock system for added security.



Aluminum

L

EPDM

Polyamide 6 GF30



**Carrying Capacity**



**Two Color Options**

# BOLDBAR BLT

## CROSSBARS

Boldbar BLT crossbars combine an elegant aluminum bar and BLT crossbar feet made of Polyamide 6 GF30 and EPDM endings. The bars come in two colors made through flawless anodizing, silver and black.

The crossbars are adjustable to the width of the vehicle's roof; they come in five different lengths (S, M, L, XL, XXL) to cover all car models with raised rails.

The BLT feet are made for cars with raised rails. They are easily mounted and guarantee a reliable fixation and safe carrying for your daily trips and travels.



**Carrying Capacity**



**Two Color Options**

OMTEC AUTO ACCESSORIES



# SOLIDBAR BLT

## CROSSBARS

Solid Bar BLT crossbars combine a robust steel bar and BLT crossbar feet made of Polyamide 6 GF30 and EPDM endings. The bars come in two colors, grey and black.

The crossbars are adjustable to the width of the vehicle's roof; they come in five different lengths (S, M, L, XL, XXL) to cover all car models with raised rails.

The BLT feet are made for cars with raised rails. They are easily mounted and guarantee a reliable fixation and safe carrying for your daily trips and travels.

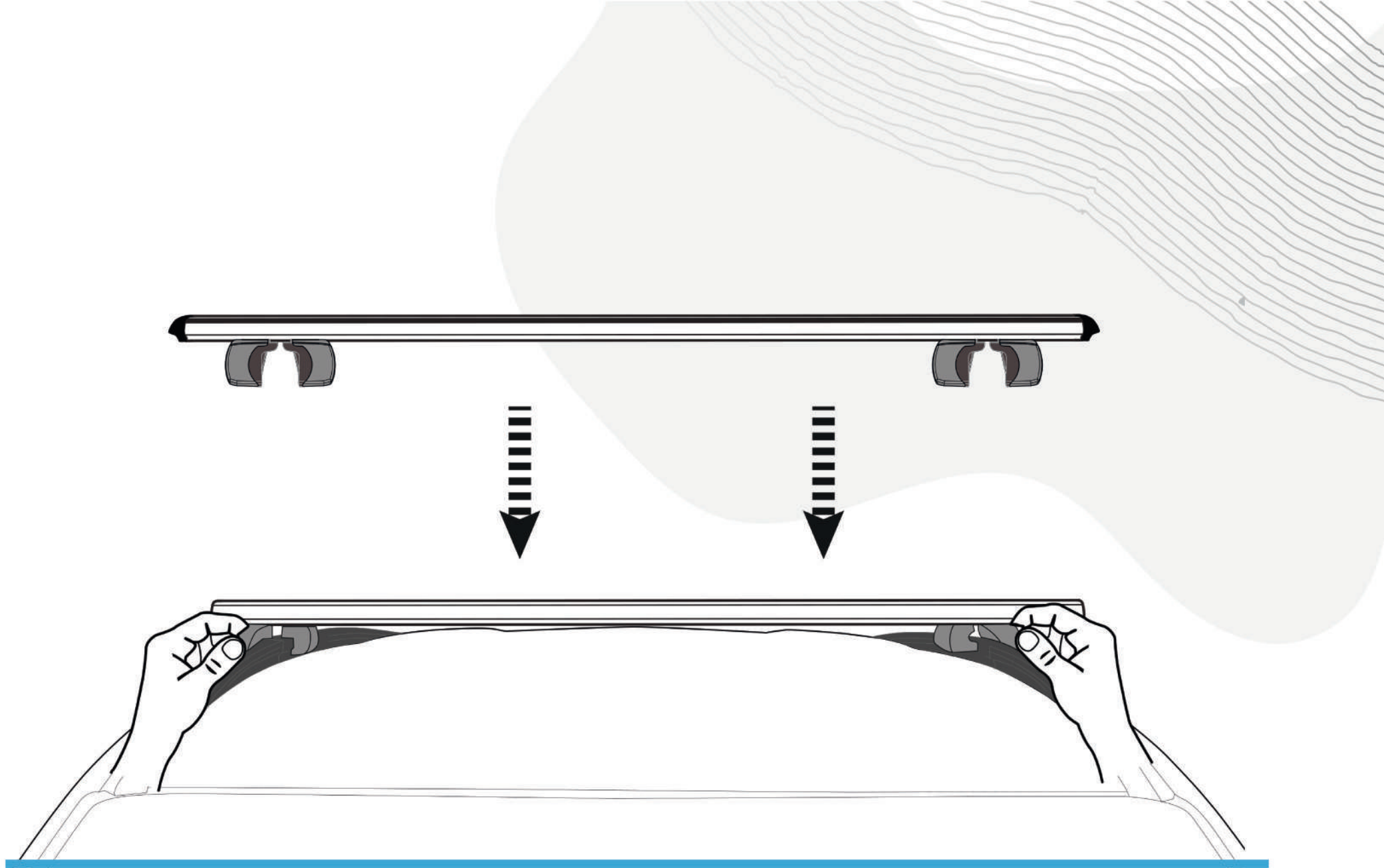


**Carrying Capacity**



**Two Color Options**

OMTEC AUTO ACCESSORIES

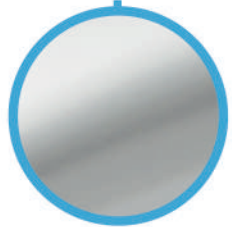


# ELEGANCE V3

## CROSSBARS

As the name indicates, our Elegance V3 crossbars provide practicality without spoiling the vehicle's elegant look. They are available in two colors coating the aluminum bars through anodizing.

Elegance V3 crossbars are vehicle-specific; they do not need roof rails and are directly fixed on the vehicle's roof. Feet made of Polyamide 6 GF30 plastic and EPDM endings and an anti-theft lock system ensure a maximum fixation to the roof rails.



Aluminum



EPDM

Polyamide 6 GF30

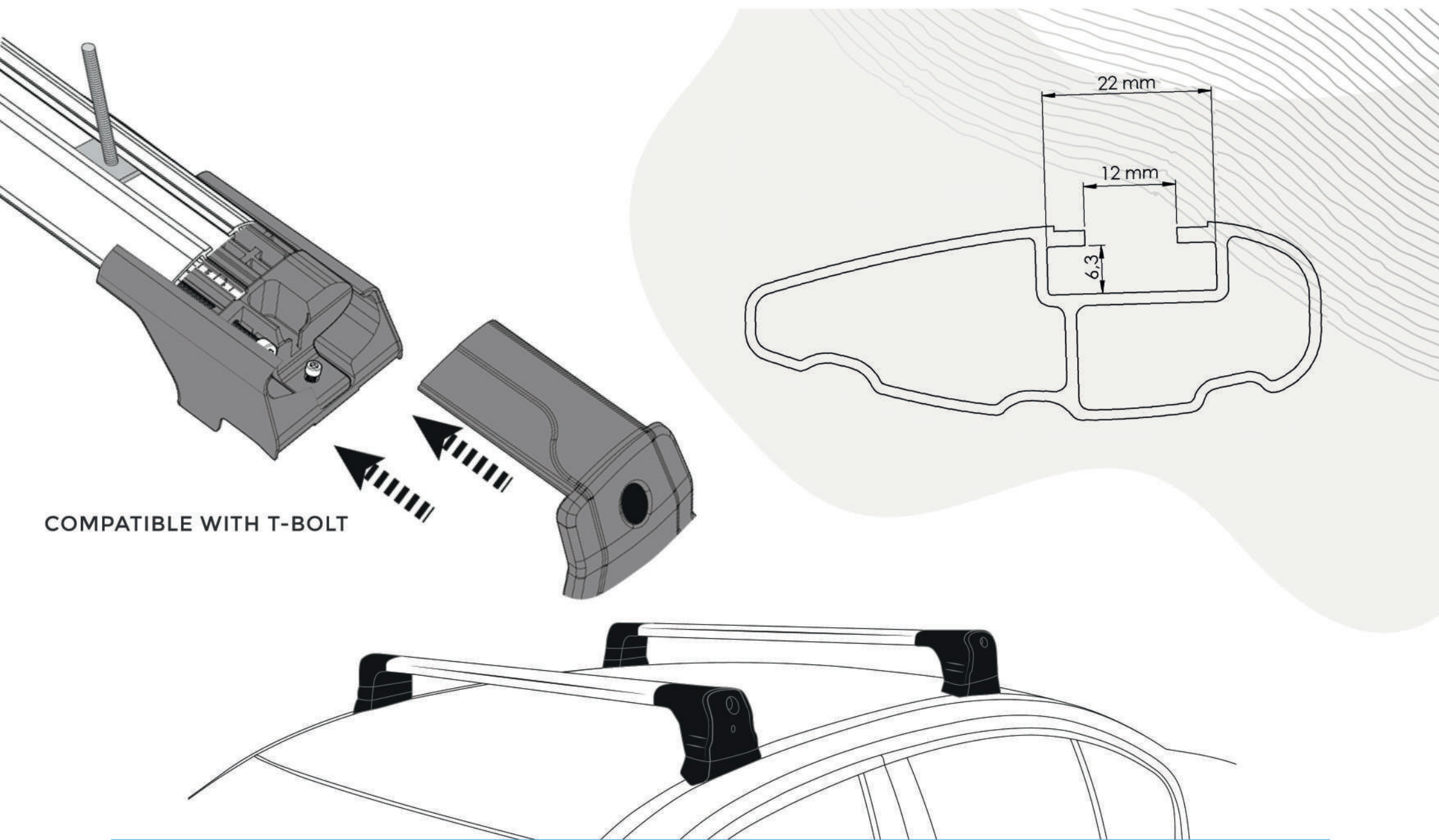


**Carrying Capacity**



**Two Color Options**

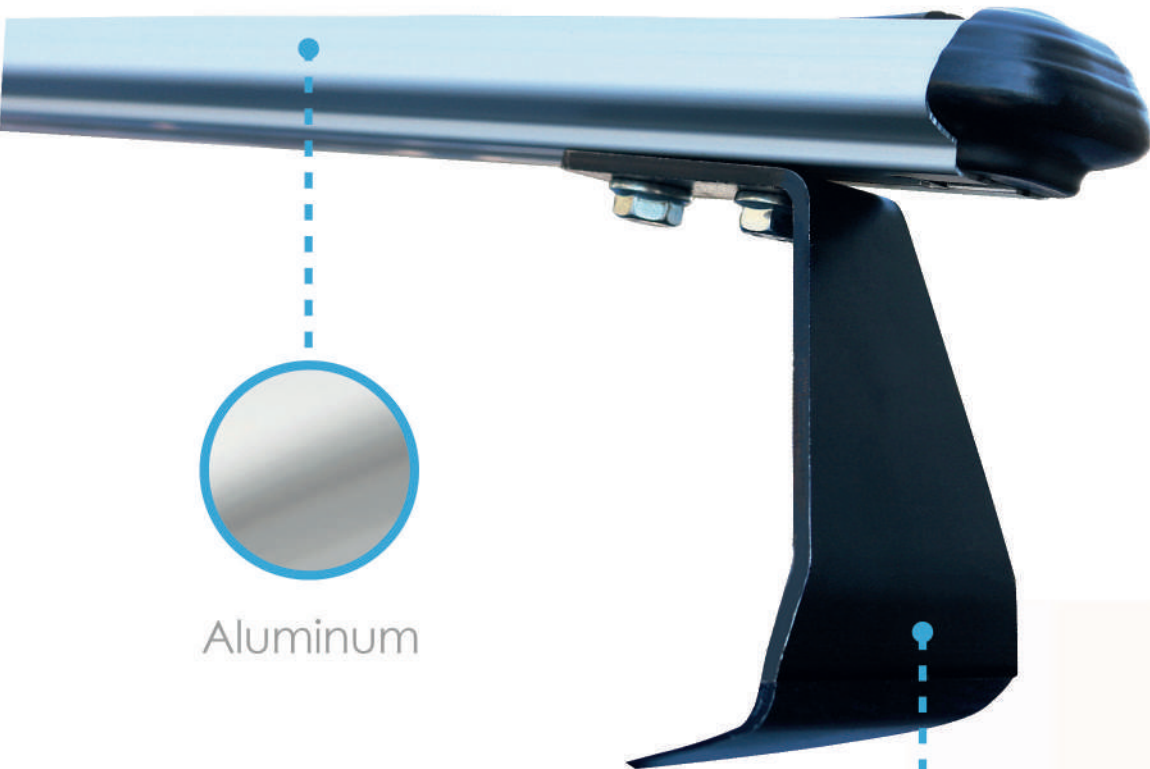




COMPATIBLE WITH T-BOLT

The crossbars are compatible with T-Bolts complying with the dimensions above. The locks and keys are made of plastic.

# HEAVY DUTY CROSSBARS



Aluminum

Directly fixed on the roof of your vehicle through screwing, the heavy-duty crossbars increase your vehicle's carrying capacity to make it easier for you to transport your goods safely and wherever you wish.



HRP Black  
Powder Coated Steel

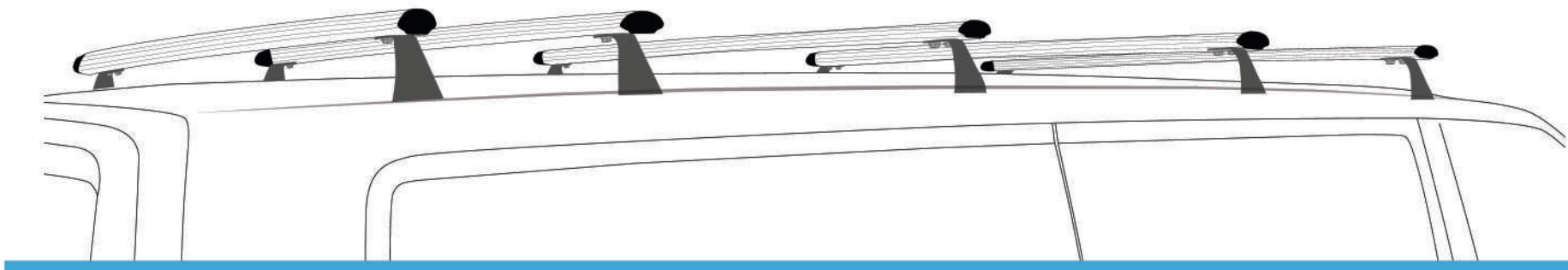
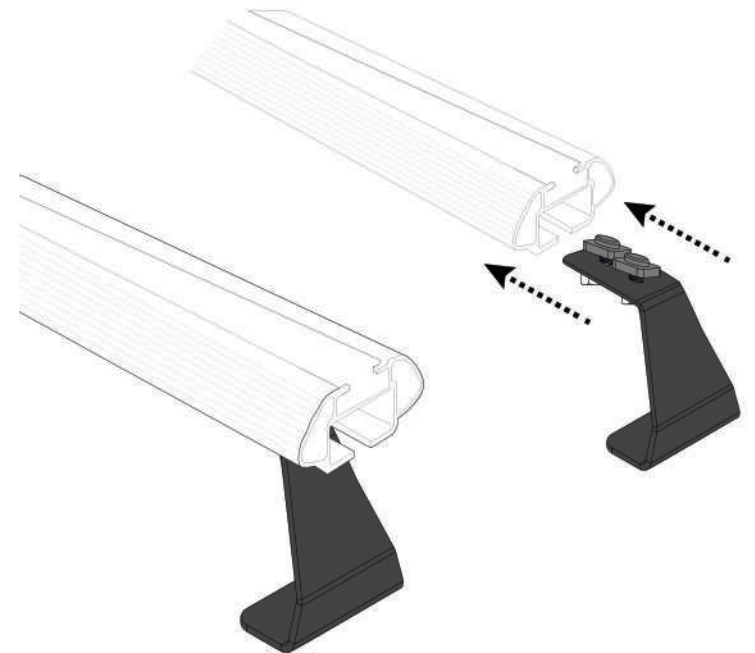


**Carrying Capacity**



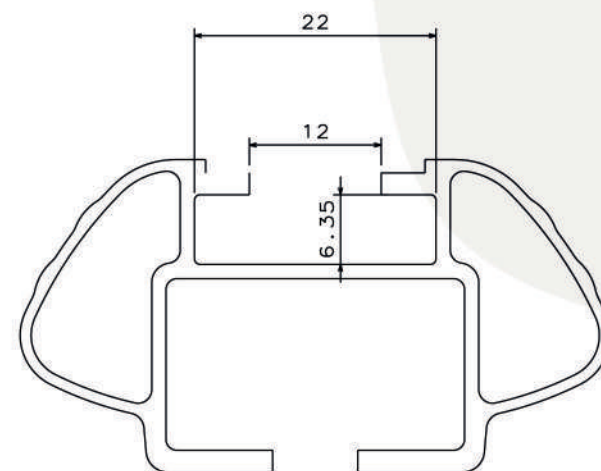
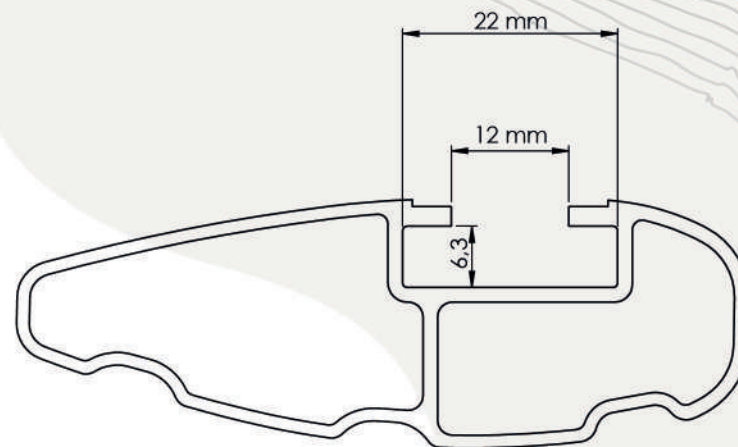
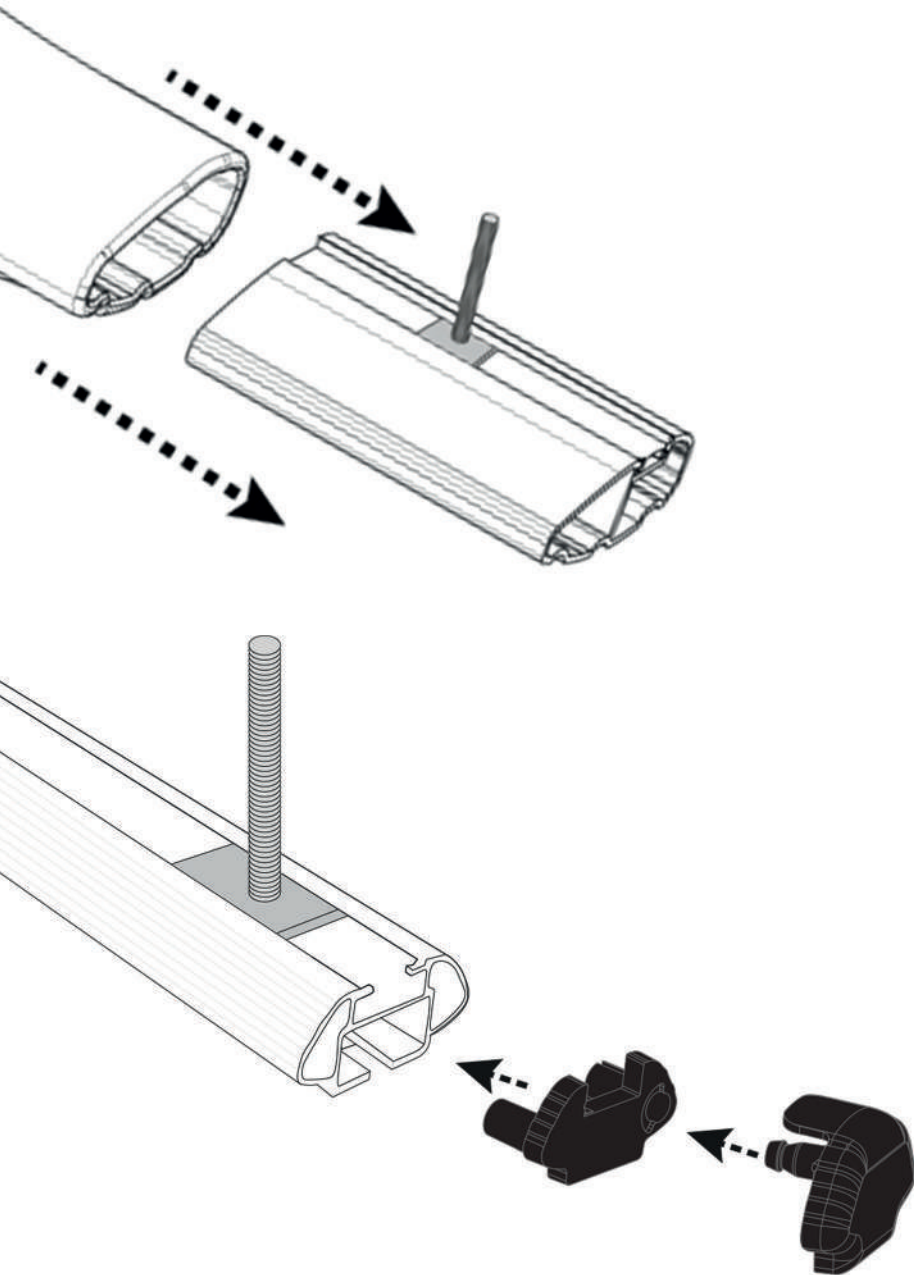
**Two Color Options**

OMTEC AUTO ACCESSORIES



The Heavy-duty crossbars are compatible with T-Bolts and load stoppers.





All our crossbars are compatible with T-Bolts and load stoppers.

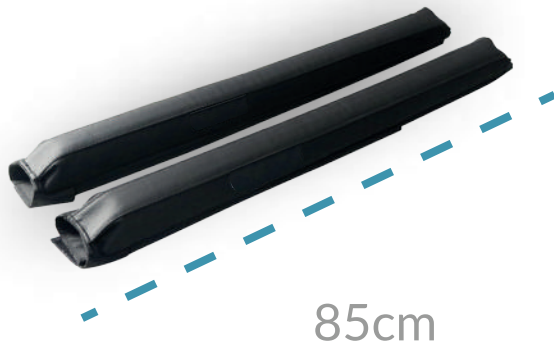
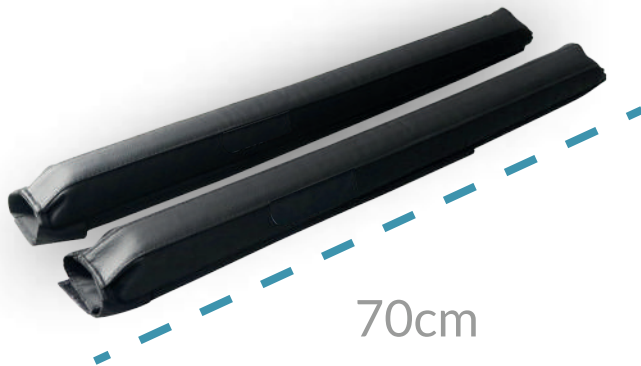
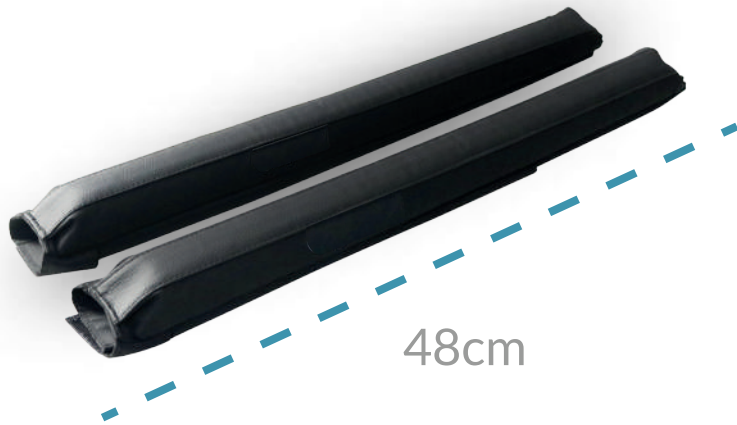
# ACCESSORIES

ACCESSORIES

ACCESSORIES

ACCESSORIES

# ROOF RACK PAD







---

# SUITABLE FOR;

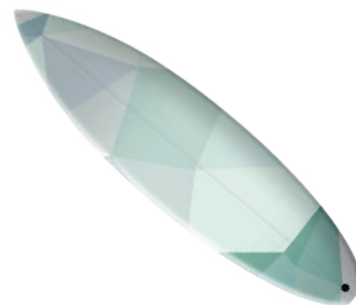
---



CANOE



SKI/SNOWBOARD

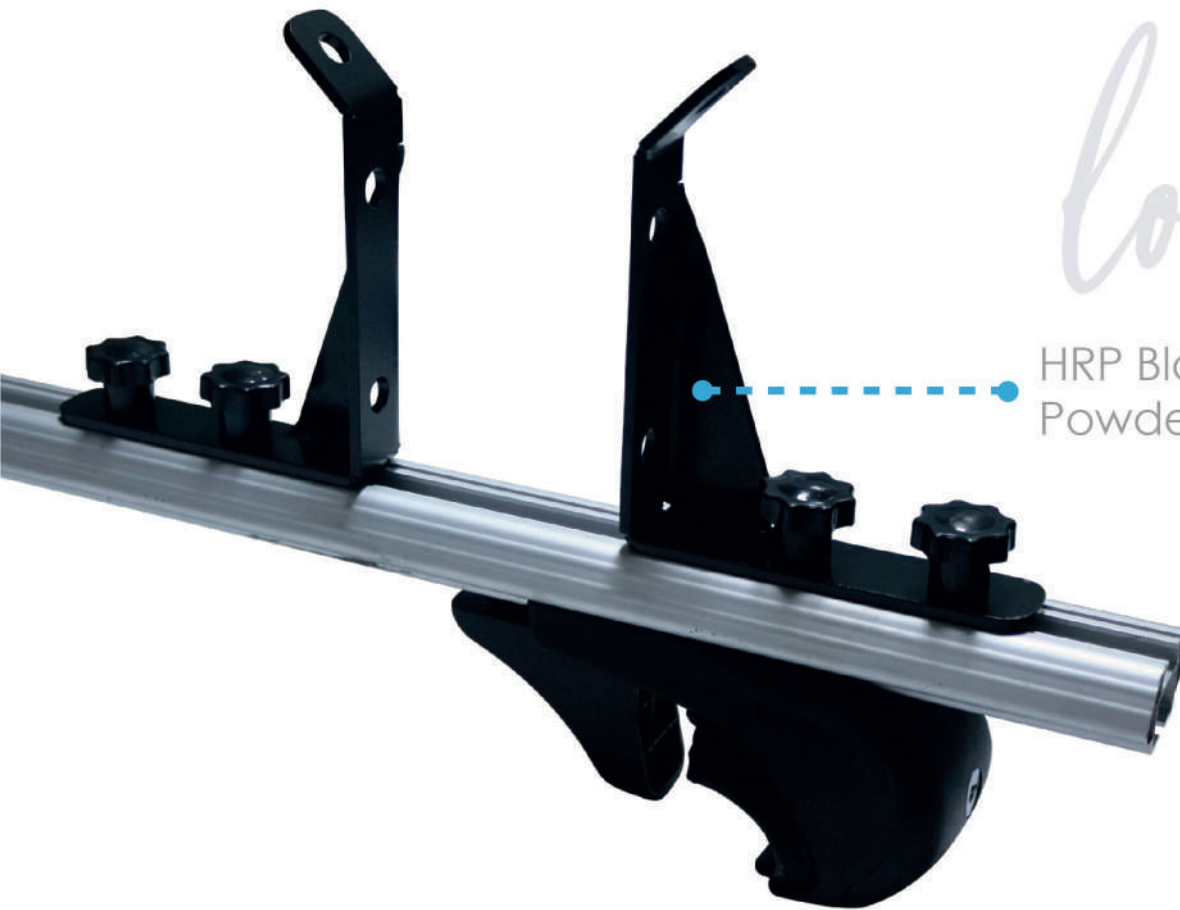


SURFBOARD



LADDER

# LOAD STOPPER



HRP Black  
Powder Coated Steel



OMTEC AUTO ACCESSORIES

# LOAD STOPPER

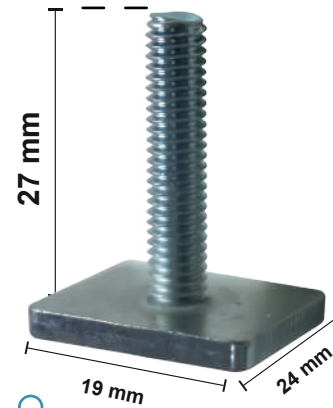
Plastic



OMTEC AUTO ACCESSORIES

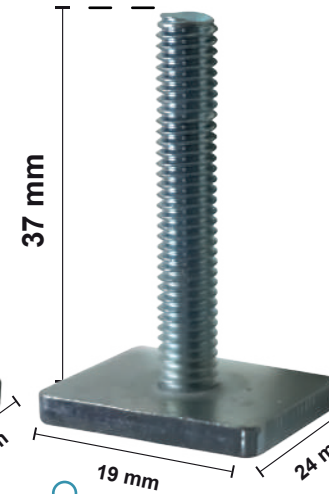


# T BOLT



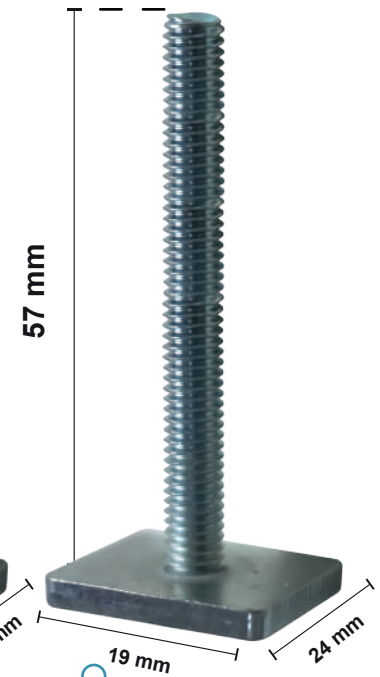
96TBE027-4  
T-Bolt (27 mm) 4 pcs.

96TBE027-3  
T-Bolt (27 mm) 3 pcs.



96TBE037-4  
T-Bolt (37 mm) 4 pcs.

96TBE037-3  
T-Bolt (37 mm) 3 pcs.

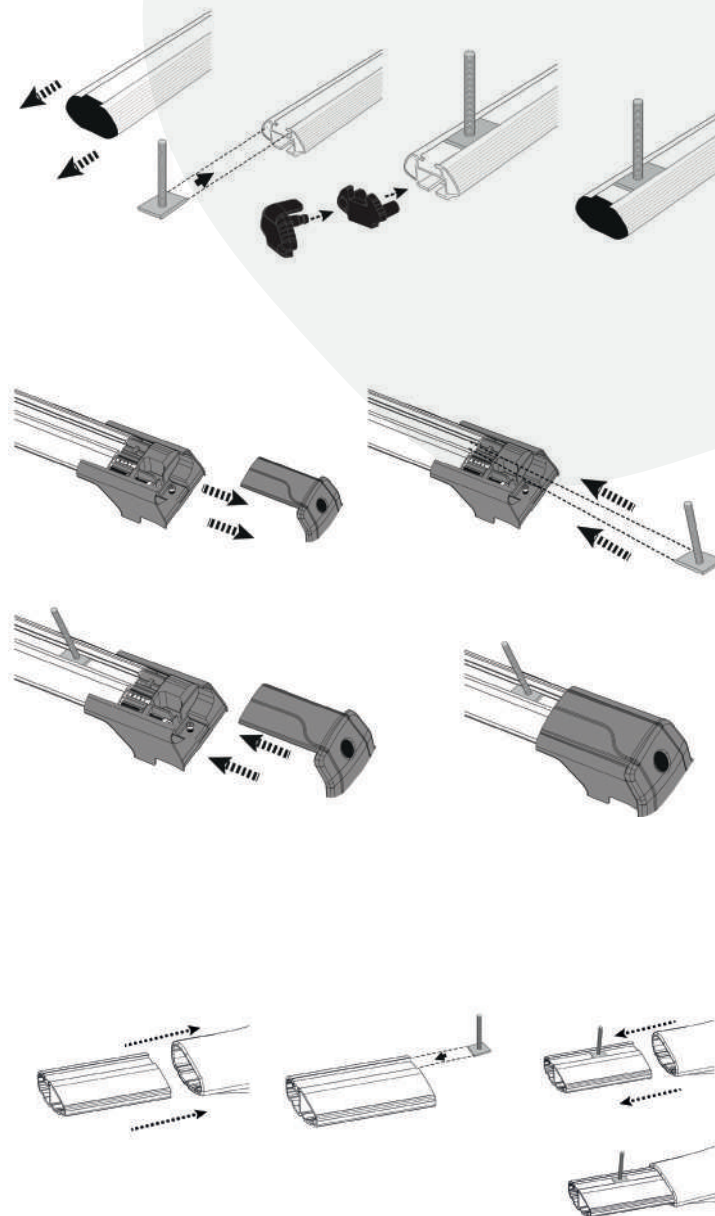


96TBE057-4  
T-Bolt (57 mm) 4 pcs.

96TBE057-3  
T-Bolt (57 mm) 3 pcs.

# FUNCTION

It is used to attach extra accessories.



# CARRYTEC

By OMTEC AUTO ACCESSORIES



 [omtecautoaccessories](https://www.instagram.com/omtecautoaccessories)

 [omtecautoaccessories](https://www.facebook.com/omtecautoaccessories)

 [OmttecAutomotive](https://twitter.com/OmttecAutomotive)

 [OMTEC Auto Accessories Co.](https://www.youtube.com/OMTECAutoAccessoriesCo)

 [www.omtec.com.tr](mailto:www.omtec.com.tr)