

PRECISION | SKILLS | INNOVATION





## About us



Let us introduce **KÁTA CNC Kft**, a leading representative of precision, skills and innovation in the Hungarian automotive supplier community. With over **25 years** of experience strengthen our commitment, serving our partners with the utmost care is the one and only way how we operate every day.

As a TIER1/TIER2 automotive supplier, KÁTA CNC is synonymous with reliability and long-term successful cooperation. Decades of invaluable knowledge and experience in the ever-changing environment of the automotive industry are the key to ensure that our vision is fulfilled in all circumstances:

To contribute to the **safe and comfortable** transport of people!

At KÁTA CNC, precision is not just a slogan; it is a way of life. We strive to use the latest technology in our innovative solutions and continuous improvements, in order to strengthen the competitiveness of our partners.

We are honoured that our products, as OEM supplier, have been installed in millions of Volvo, Volkswagen, Mercedes Benz, BMW, Peugeot, Citroen, Audi, Porsche and other vehicles. We are pleased to say that they work flawlessly and imperceptibly, serving the safety and comfort of transport for all.

We believe that our introduction is a solid foundation for a successful partnership in the future. We look forward to supporting you in achieving your further long-term success.





## Headquarter

**H-2255 Szentlőrinc, káta,  
Dózsa Gy. Str. 90.**

1 hour distance by car from Budapest.

- CNC machining
- Cutting
- Deburring
- Unique production



## Site Nr.2.:

**H-5100 Jászberény, káta,  
Alsómuszály 58.**

- Laser technologies
- CNC bending
- CNC machining
- Cutting
- Manual and robotized welding
- Mechanical assembly
- Hydraulic cold forming

# R&D

Individual department at  
KÁTA CNC

Main activity: design of  
tools and fixtures,  
automatization and support  
for all internal processes

---



## Quality Control Management / Certifications

KÁTA CNC operates Integrated Quality, Environment, Information Security Management System and certified as:

- IATF 16949:2016
- BS EN ISO 9001:2015
- EN ISO 14001:2015
- MSZ ISO 27001:2014
- MSZ ISO 45001:2018
- MSZ EN ISO 50001:2019

which Certificates are valid for both Sites.







# Technologies

- Manual and robotized welding
- Hydraulic cold forming
- Mechanical assembly
- Laser technologies
- CNC machining
- CNC bending
- Washing





# Machine Park

## Cutting Machines:

- Kasto Speed M15
- Elumatec SBZ616 / SAS142



## CNC Wire EDM Machine:

- Sodick VL600Q  
(X:600mm – Y:400mm – Z:275mm)

## CNC Work Centres:

### 1 spindle, 3 axis:

- KIA HI-V50D  
(X:520mm – Y:450mm – Z:500mm)
- KIA VX-380TD  
(X:500mm – Y:360mm – Z:350mm)

### 1 spindle, 4 axis:

- FANUC D21LiB5  
(X:700mm – Y:400mm – Z:400mm)
- Brother TC-32B  
(X:550mm – Y:400mm – Z:415mm)
- Haas VF3ss  
(X:1016mm – Y:508mm – Z:635mm)
- Haas VF4ss  
(X:1270mm – Y:508mm – Z:635mm)
- Haas VF6  
(X:1626mm – Y:813mm – Z:762mm)



### 1 spindle, 5 axis:

- Haas UMC750  
(X:762mm – Y:508mm – Z:508mm)
- Hermle C300  
(X:650mm – Y:600mm – Z:500mm)
- Hermle C400  
(X:650mm – Y:700mm – Z:500mm)
- Hermle C600  
(X:600mm – Y:450mm – Z:450mm)



### 2/4 spindle, 4 axis:

- SW BA322  
(X:300mm – Y:400mm – Z:375mm)
- SW BA400-4  
(X:200mm – Y:500mm – Z:425mm)



### 2 spindle, twin 4 axis:

- SW BAS03-5  
(X:300mm – Y:400mm – Z:375mm)



## CNC Long Lathes:

- Star SB-20R  
(Max workable diameter: 24mm)
- Star SR-32JII  
(Max workable diameter: 36mm)
- Star SR-383  
(Max workable diameter: 38mm)







## Robotic Welding Machines:

- Fanuc Arcmate 120iC robot  
(Maximum outreach: 1811mm; max. 20kg)
- Fronius Transpuls Synergic 4000  
(digital, inverter welding machine)

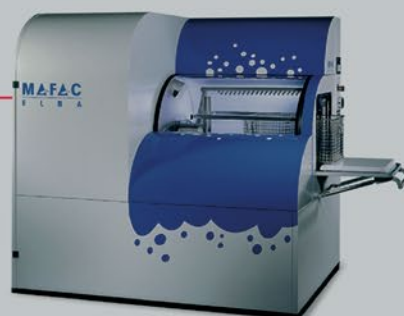
## Laser cutting Machine:

- Trumpf - TruLaser 3030 Fiber (6 kW)  
(workable dimensions : 3000 mm x 1500 mm;  
max. weight: 900 kg; max workable thickness: steel: 25 mm,  
stainless steel: 25 mm, aluminium: 25 mm, copper: 10 mm)



## Washing Machines:

- Mafac Palma
- Mafac Elba
- Mafac Malta
- Special high performance washing machines



## TubeLaser:

- TRUMPF TRULASER 7000  
( $\varnothing$ : 254 mm, Maximal lenght of raw material: 6500 mm,  
nominal power output: 4kW)



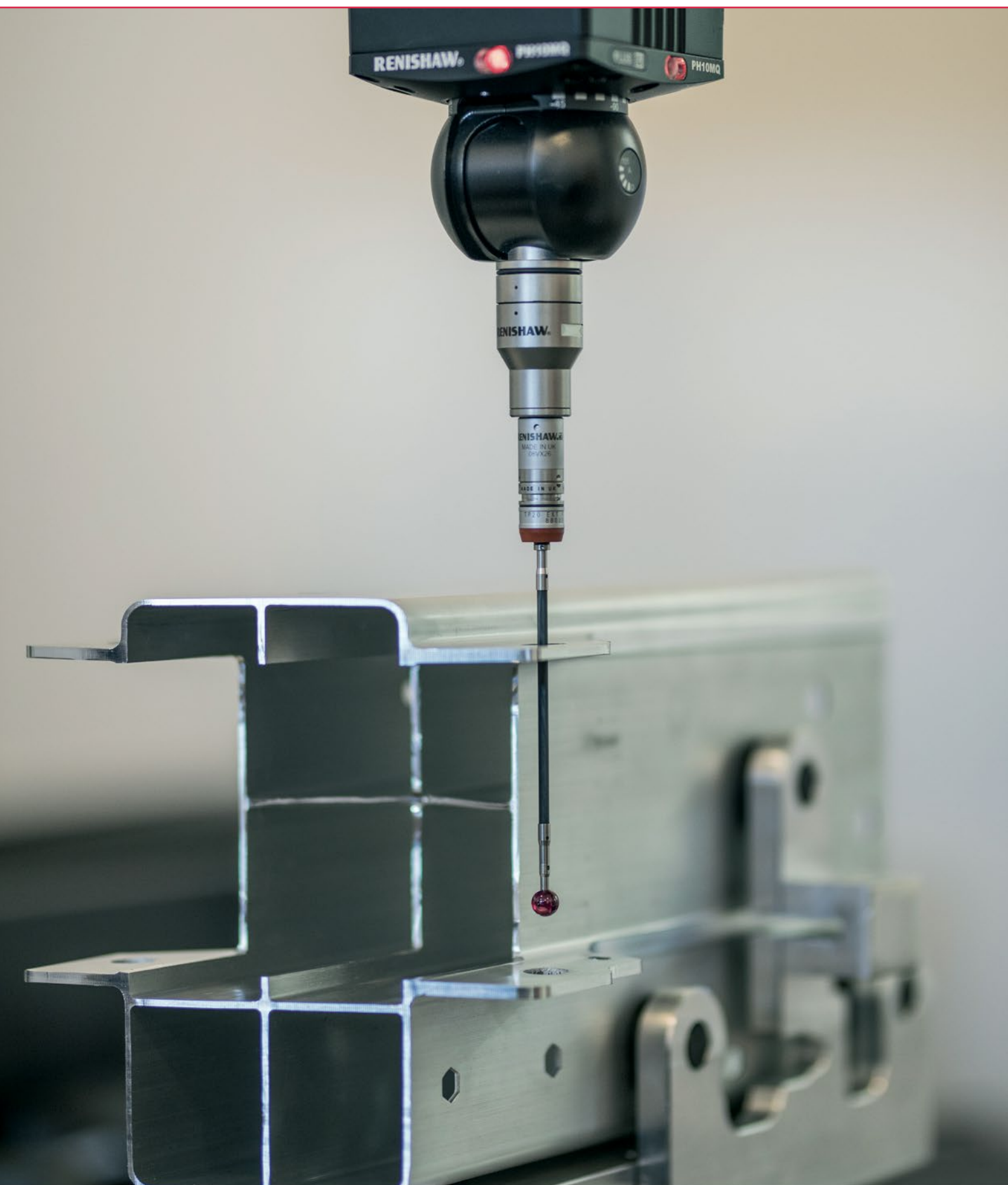
## CNC Bending Machine:

- TRUMPF TRUBEND 5170  
(Compressive force: 1700kN,  
bending lenght: 3230 mm)



Hidraulic, and excenter press machines: until 425t  
Engraving, and marking machines: several types and styles

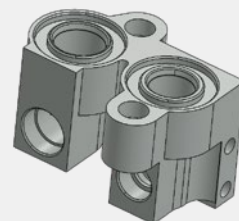




# Products

- **Flanges for automotive climate and hydraulic systems**

- High-precision CNC machining centres with 4-5 axis
- Special hydraulic clamping systems
- Special hard metal and PCD machining tools



---

- **Automotive Crash Management System (CMS) components and chassis parts**

- CNC machining and special integrated production and assembly lines
- Automatized mechanical assembly of subcomponents and fasteners



---

- **Roll Over Protection Systems (ROPS) component's production and pre assembly for Automotive industry**

- CNC megmunkáláson felül speciális integrált megmunkálási és szerelő sorok
- Alkatrészek és rögzítő elemek automatikus mechanikus összeszerelése
- Több OEM-hez közvetlen szállítás



---

- **CNC turned parts for cooling systems and for automotive industry**

- Product transferring with manipulators
- CNC lathes
- Double spindles
- Integrated lines





- **CNC machined – die casted and forged - parts for Automotive industry**

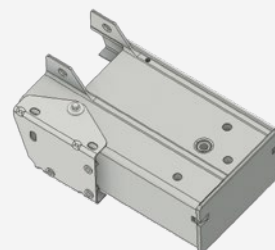
- High-precision (4-5 axis) CNC machining centres
- Special hydraulic clamping systems
- Special hard metal and PCD machining tools



---

- **(CMS) component's production and pre assembly**

- 5 axis CNC machining + hydraulic pressing with special machines
- Special integrated automatized production
- Assembly of subcomponents and fasteners
- Direct deliveries to OEMs



---

- **(CMS) component's production, welding and preassembly**

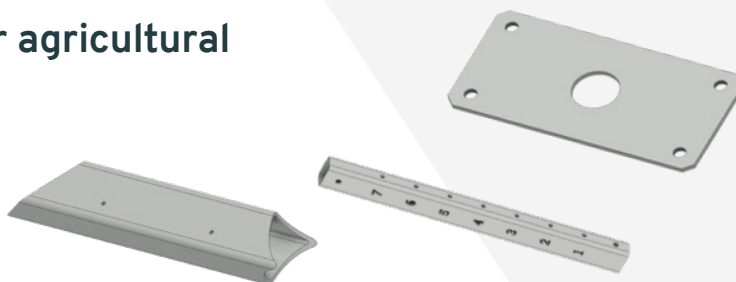
- Special integrated production and assembly lines
- 5 axis CNC machining + hydraulic pressing on special machi
- Mechanical assembly of subcomponents and fasteners
- Robot welding



---

- **Laser cut and bended parts for agricultural and railcar industry**

- CNC controlled laser cut and blending machines (TRUMPF) for sheet metals and tubes





## KÁTA CNC KFT.

2255 SZENTLŐRINCKÁTA, DÓZSA GY. STR. 90.

(+36 29) 631 001 | [INFO@KATACNC.HU](mailto:INFO@KATACNC.HU) | [WWW.KATACNC.HU](http://WWW.KATACNC.HU)