

ATOMONE TECHNOLOGIES

COMPANY PROFILE

TABLE OF CONTENTS

1. About Us
2. Milestones
3. Vision, Mission & Values
4. Safety, Health & Environment
5. Business & Investment Plans
6. Location
7. Layout of Plant 1
8. Manufacturing Facilities– Plant 1
9. Layout of Plant 2
10. Manufacturing Facilities– Plant 2
11. Esteemed Customers
12. Our Products
13. Machine Specifications
14. Our Team
15. Conclusion

ABOUT US

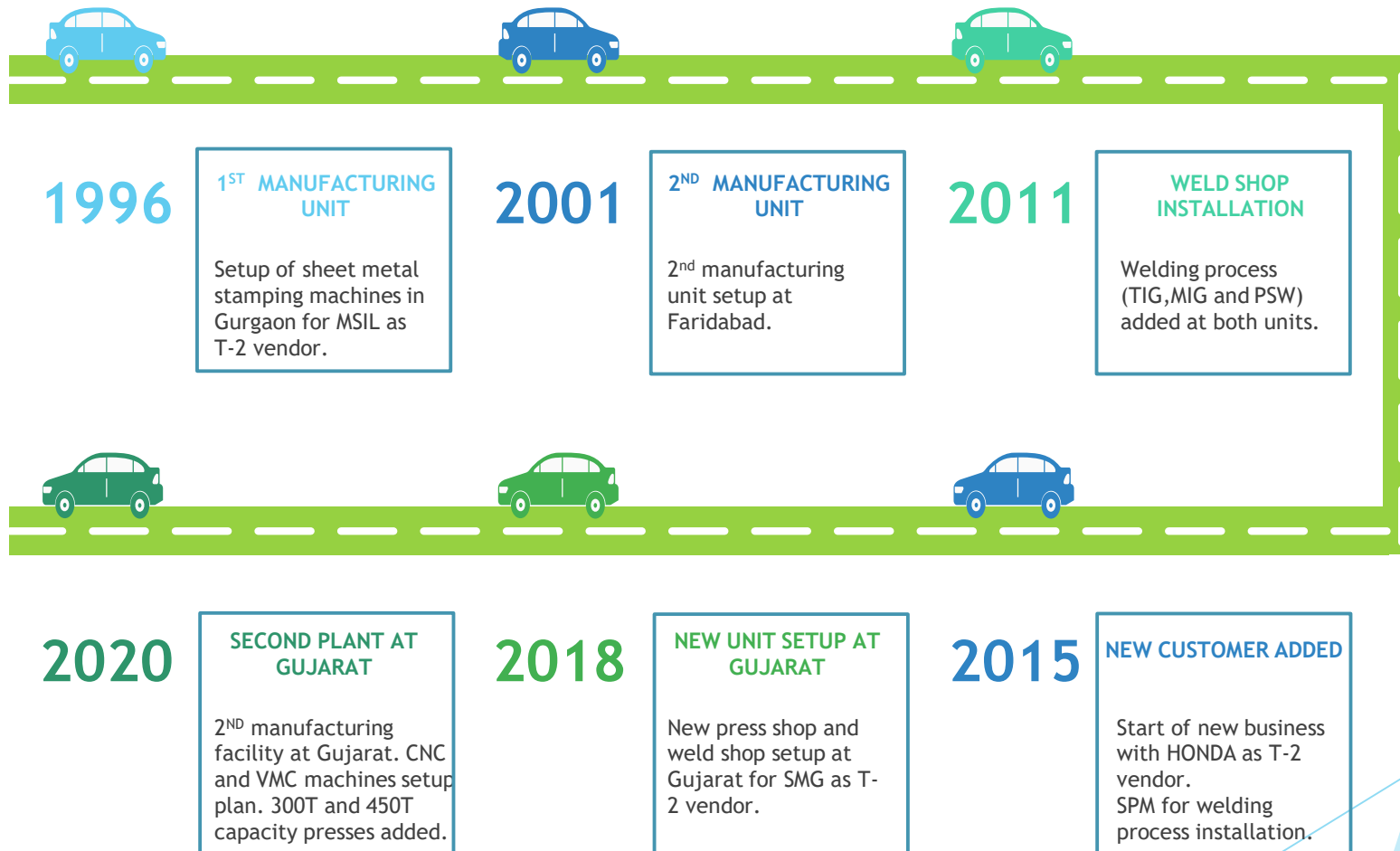
AtomOne Technologies, formerly known as Minda Stampings, was founded by Mr. Satish Goyal in 1996. Mr. Goyal is a civil engineer from NIT college, Kurukshetra and has been in the sheet metal manufacturing industry over the past three decades.

We are a leading engineering company with factories situated *in **Haryana and Gujrat***, that specializes in manufacturing **sheet metal fabrication** products applicable to various industrial sectors such as Automotive, Electrical, Electronics, Heavy fabrication, etc.

Equipped with the **cutting-edge technology machinery** and advanced manufacturing processes we have successfully accomplished several technically challenging jobs for our customers leading to an enriched client base. We are not only appreciated by our customers for our quality products but for **cost competitive** design solutions, technical assistance and **timely deliveries**, too.

We are a forward-thinking company committed to customer satisfaction through building mutually beneficial relationships. Our goal is to provide our customers with the *highest quality product in the most efficient manner at the lowest rate possible*. Our dedicated and professional team will exceed your expectations.

MILESTONES



VISION, MISSION & VALUES

VISION- To be recognised as a **premier one-stop provider for engineering solutions** through:

- Incorporating latest cutting-edge technology and machinery
- Maintaining efficiency and quality using strict quality controls
- Experienced, professional management and technical team with substantial industry experience
- Customer oriented team members

MISSION

To provide a premium service, meeting and exceeding our customer's expectations, while maintaining a high standard of safety, profitability and integrity.

VALUES- These serve as the guide for how we treat our clients & associates.

- Innovation
- Excellence
- Integrity
- Transparency
- Accountability
- Social responsibility

SAFETY, HEALTH & ENVIRONMENT

GENERAL SAFETY

- Mandatory safety training to all employees.
- Weekly safety audit by safety committee.
- Shop floor gangways are planned considering smooth material movement.
- All employees are mandated to use personal protective gears.

FIRE SAFETY

- Fire Hydrant System provided by Mascot Industrial Park.
- Fire alarm system installation in Office area and shop floor with siren at guard room.
- Water Sprinkler system installation in Office area.
- Fire extinguishers installation throughout the plant.
- Emergency Exit doors provided at convenient locations.

HEALTH

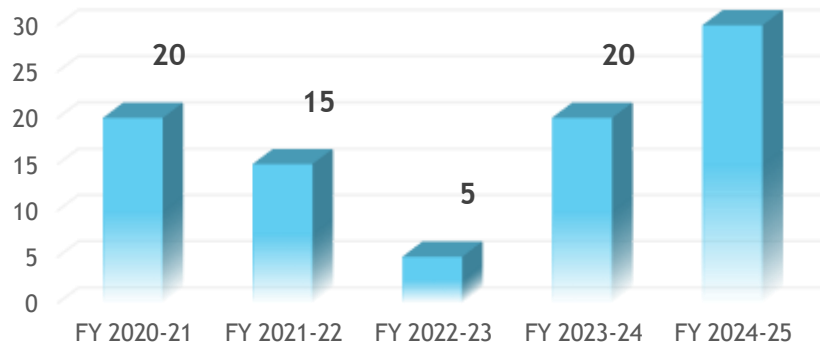
- ESI coverage for all employees.
- Adequate numbers of washrooms, urinals & wash basins with proper lighting & ventilation.
- In-house Canteen for all employees provided with fresh and nutritious food.
- Drinking water RO + Cooler system installed for all employees.

ENVIRONMENT

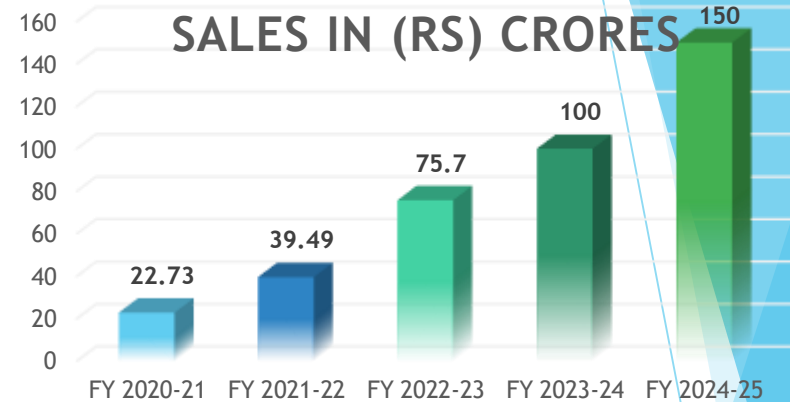
- No Industrial effluent from the Manufacturing process.
- Tree Plantation being done all around the factory.

BUSINESS & INVESTMENT PLAN

INVESTMENT IN (RS) CRORES

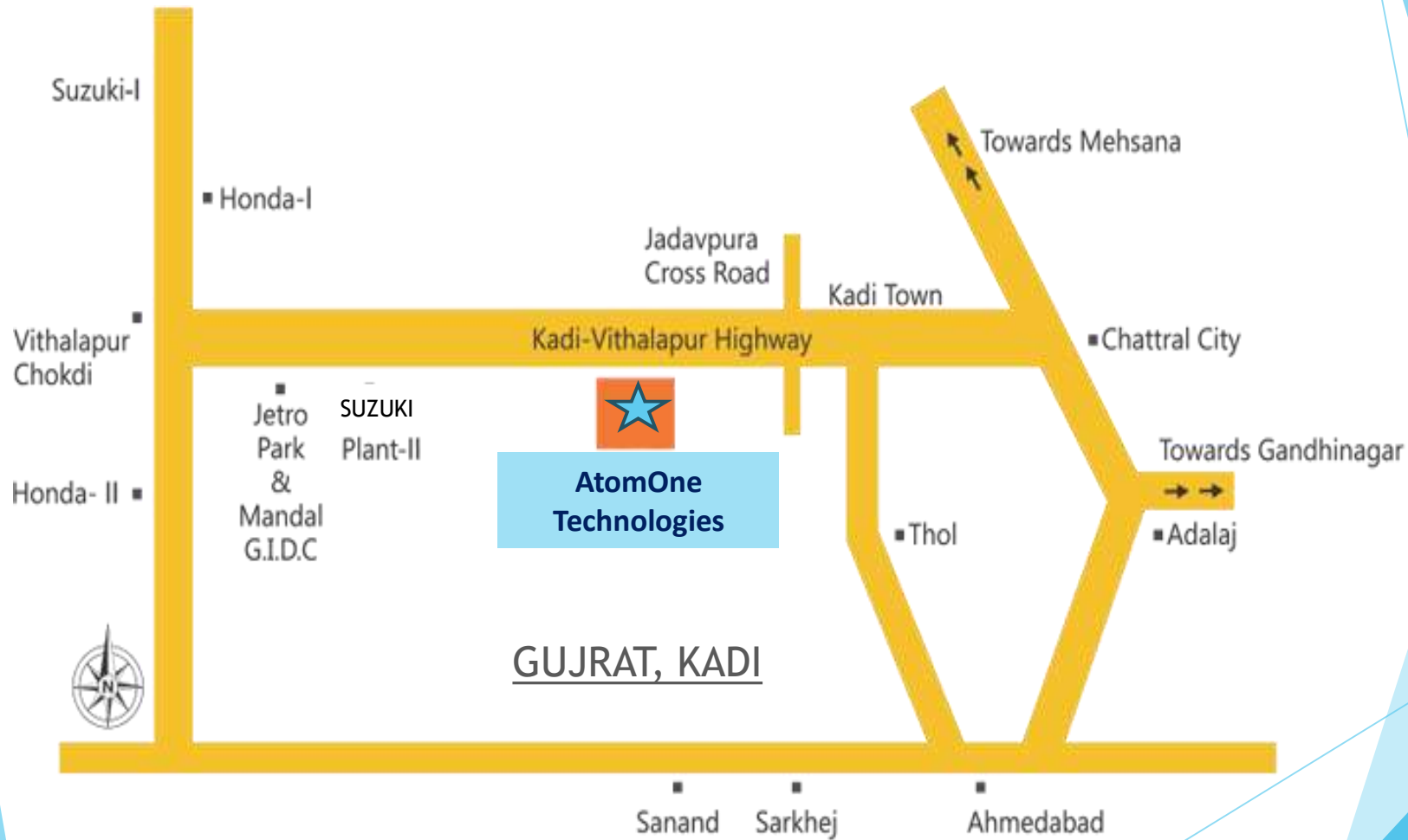


SALES IN (RS) CRORES

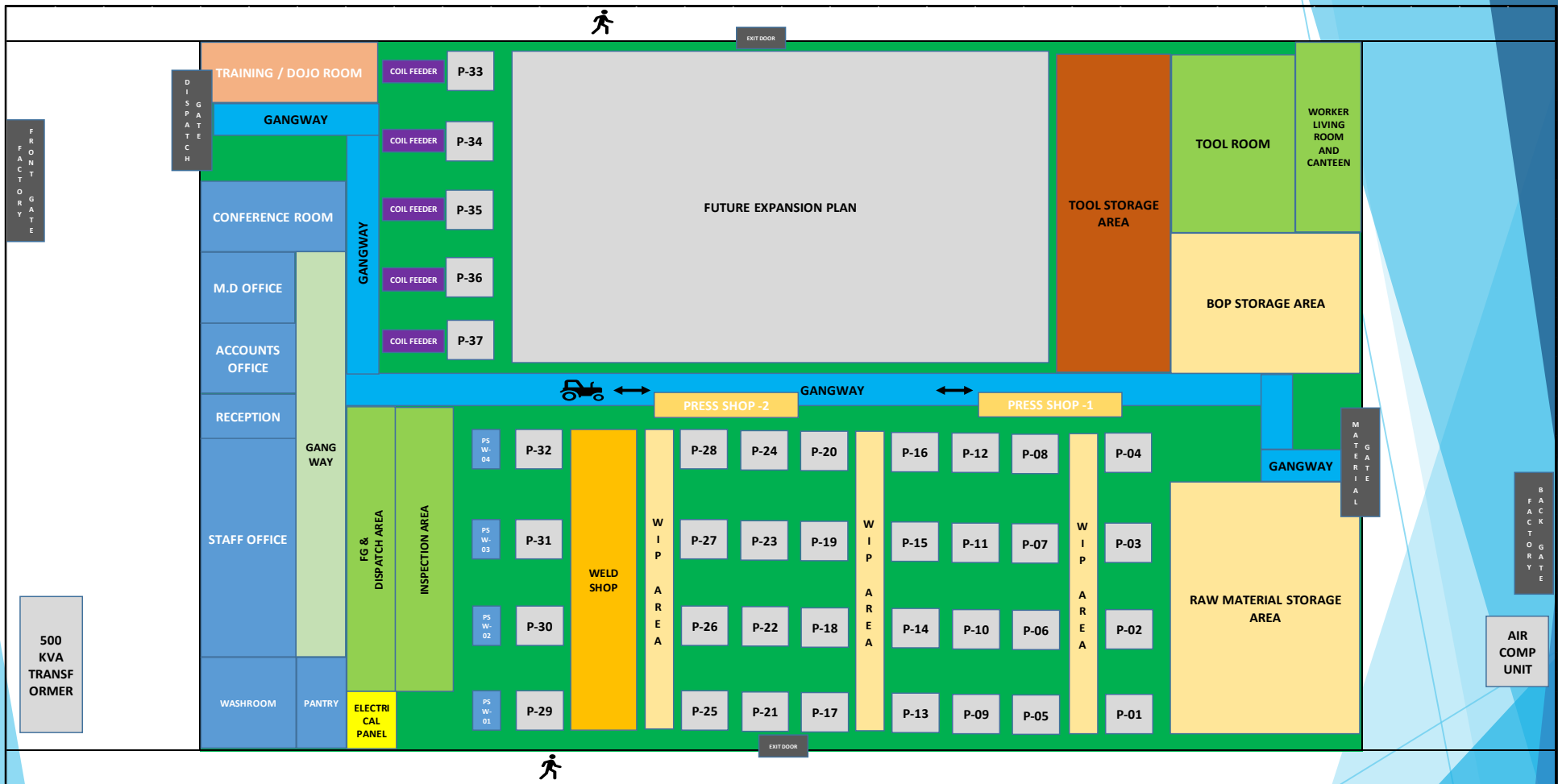


- Steady Growth in Sales
- Steady Re-investment according to market opportunities
- Re-investment areas include latest technology, land purchase, state-of-art machinery
- We aim to maintain the steady growth in our sales:
TAREGTTING TO REACH SALES OF 500 CRS IN NEXT 10 YEARS

PLANT LOCATION



PLANT 1 - LAYOUT



MACHINE INSTALLATION CAPACITY OF SHOP FLOOR – 60 POWER PRESSES

TOTAL AREA : 3609 square meter or 38,500 square feet

TOTAL BUILT UP AREA : 2243 square meter or 24,000 square feet

PLANT – 1 IMAGES



PRESS SHOP



WELD SHOP

STORAGE FACILITIES



TOOL STORAGE AREA



LIFTER



RM STORAGE AREA



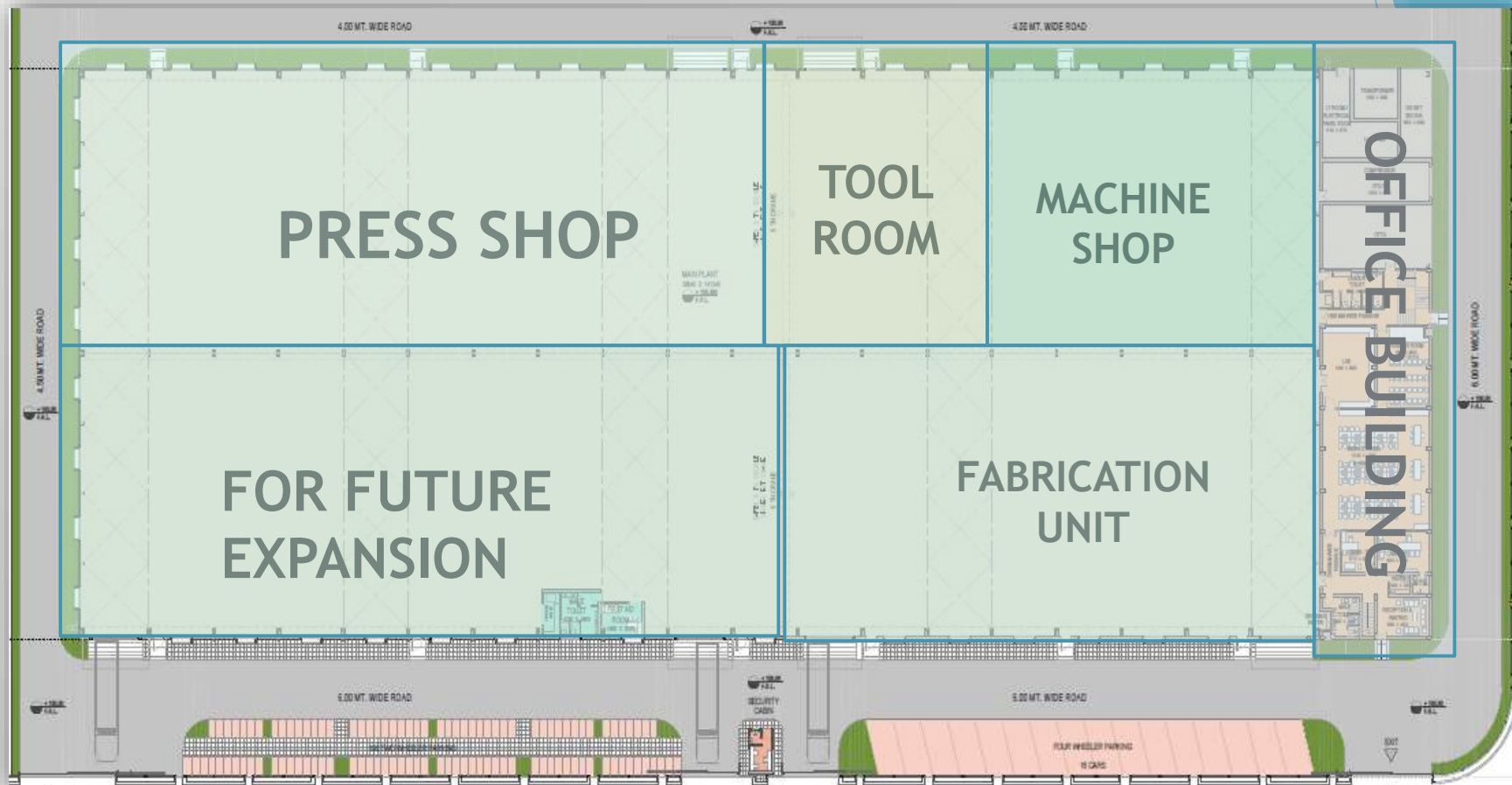
FG STORAGE AREA

TOOL ROOM



MASTER LIST OF MACHINES - PLANT 1					
S.N	MACHINES	TONNAGE/SPECS	QUANTITY	MAKE	REMARK
POWER PRESS EQUIPMENT					
1	POWER PRESS	63 T	29 NO'S	SEW	
2	POWER PRESS	110 T	19 NO'S	SEW	
3	POWER PRESS	160 T	05 NO'S	ISGEC	
4	HYDRAULIC PRESS	40 T	03 NO'S	HYDE MARK	
5	SHEARING MACHINE		01 NO'S	NIMOGA	
WELDING EQUIPMENT					
1	PROJECTION SPOT WELDING	10 KV	01 NO'S	ARTECH	
2	PROJECTION SPOT WELDING	50 KV	02 NO'S	JAI HIND SCIACKY	
3	TIG WELDING	400 AMP	06 NO'S	PANASONIC	
4	MIG WELDING	400 AMP	02 NO'S	PANASONIC	
TOOL ROOM EQUIPMENT					
1	MNTR		01 NO'S	SIDDHAPURA	
2	LATHE MACHINE		01 NO'S	OLYMPIC	
3	DRILLING MACHINE		01 NO'S	SIDDHAPURA	
4	SURFACE GRINDER		01 NO'S	GURU ARJAN	
MISCELLANEOUS EQUIPMENT					
1	FORK LIFTER (BATTERY OPERATED)	1.5 T	01 NO'S	NILKAMAL	
2	FORK LIFTER (MANUAL)	1.5 T	01 NO'S	NILKAMAL	
3	AIR COMPRESSOR	60 HP & 40 HP	02 NO'S	MARK	
4	PIPE CUTTING MACHINE		01 NO'S		
5	WELD PENITRATION TESTING INSTRUMENT		01 NO'S		
6	COIL FEEDER (UPTO 200MM)		01 NO'S		
7	DG SET	250 KVA	01 NO's		PROPOSED
8	FLOOR CLEANING MACHINE				

PLANT 2 - LAYOUT



TOTAL AREA : 13087 square meter or 1,41,500 square feet
TOTAL BUILT UP AREA : 9275 square meter or 1,00,000 square feet

PLANT – 2 IMAGES



ROBOTIC WELDING SYSTEM



Aluminium MIG welding robotic setup with
Yaskawa Robot and Fronius Welding machine

MASTER LIST OF MACHINES – PLANT 2

S.NO	MACHINES	TONNAGE/SPECS	QUANTITY	MAKE	REMARK
POWER PRESS EQUIPMENT					
1	POWER PRESS	160 T	04 NO'S	ISGEC	
2	POWER PRESS	300 T	05 NO'S	ISGEC	
3	POWER PRESS	450 T	01 NO'S	ISGEC	
4	POWER PRESS	250 T	10 NO'S	ISGEC	AUG-23
5	POWER PRESS	200 T	20 NOS	AIDA	JAN-24
6	SERVO PRESS	150 T	1 NOS	AIDA	AUG-23
7	HIGH SPEED PRESS	50 T	1 NOS	BRUDERER	DEC-23
MACHINING EQUIPMENT					
1	CNC TURNING	SLC20LM	07 NO'S	ACE MICROMATIC	
2	CNC TURNING	COLT LM	05 NO'S	ACE MICROMATIC	
3	VMC	MCV 300	03 NO'S	ACE MICROMATIC	
4	CNC SLIDING HEAD	A20	01 NO'S	CITIZEN	INSTALLED BY AUG-23
FABRICATION EQUIPMENT					
1	ROBOT WELDING CELL	MIG	01 NO'S	FRONIUS	
MISCELLANEOUS EQUIPMENT					
1	EOT CRANE	05 T	1 NO'S		
2	COMPRESSOR	75 HP	1 NO'S		
LAB EQUIPMENT					
1	CMM	1200X2000 MM	01 NO'S	MITUTOYO/ZEISS	SEP-23
2	VMM	300X400 MM	01 NO'S	MITUTOYO/ZEISS	JUL-23
3	CONTOUR MACHINE	100 MM	01 NO'S	MITUTOYO	JUL-23
4	SURFACE ROUGHNESS		01 NO'S	MITUTOYO	JUL-23
5	PLATING THICKNESS		01 NO'S	FISCHER	AUG-23
6	PLATING HARDNESS TESTER		01 NO'S	FISCHER	AUG-23
7	SPECTROMETER		01 NO'S	METAL POWER	JUL-23
8	SALT SPRAY TEST CHAMBER		01 NO'S	PACCOR	SEP-23

MASTER LIST OF MACHINES – PLANT 2 - PROPOSED

S.NO	MACHINES	TONNAGE/SPECS	QUANTITY	MAKE	REMARK
TOOL ROOM					
1	VMC – 900*600	900*600	01 NO'S	HAAS	APR-24
2	VMC - 1400*2000	1400*2000	01 NO'S	MAZAK	APR-24
3	CNC WIRE CUT- 600*400	600*400	01 NO'S	SODICK	APR-24
4	CNC EDM DIE SINK – 350*250	350*250	01 NO'S	SODICK	APR-24
5	LATHE MACHINE	6"*500	01 NOS	PINACHO	APR-24
6	SURFACE GRINDER	600*1000	01 NOS	OKAMOTO	APR-24

- WE ARE CURRENTLY SETTING UP AN IN-HOUSE TOOL ROOM FOR NEW TOOLING AND PROTO DEVELOPMENT
- FULL FLEDGED OPERATIONAL TOOL ROOM TO BE SET UP BY THE *END OF YEAR 2024*

OUR VALUED CUSTOMERS

1. Futaba Industrial Gujarat (FIG), Bechraji, Gujarat
2. Tenneco Automotive India, Sanand, Gujarat
3. Subros Ltd, Gujarat
4. Topre, Vithalapur, Gujarat

OUR PRODUCTS



MUFFLER PARTS FOR 2W & 4W

OUR PRODUCTS



CHASSIS PARTS

OUR PRODUCTS



TUBULAR PARTS

OUR PRODUCTS



FLANGES SS AND MS

OUR PRODUCTS



COPPER BUSBARS

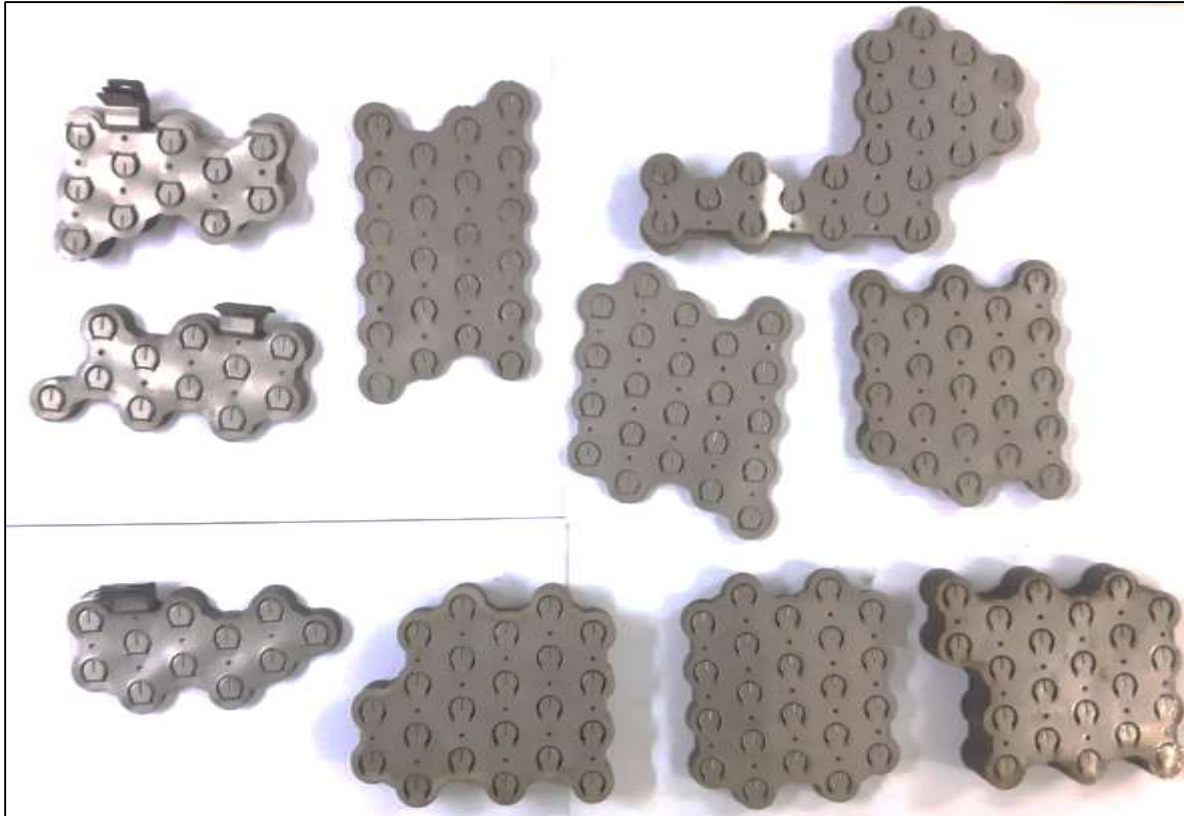
OUR PRODUCTS



COPPER BUSBARS



OUR PRODUCTS



NICKEL BUSBARS

OUR PRODUCTS



MACHINED PARTS

OUR PRODUCTS



DRAW PARTS

OUR PRODUCTS



MACHINE SPECIFICATIONS – POWER PRESS



S.N	SPECIFICATION	TONNAGE		
		63 TON	110 TON	160 TON
1	MAKE	SEW	SEW	ISGEC
2	RATED DISTANCE (RATING POINT)	4 MM	5 MM	6 MM
3	STROKE LENGTH - FIXED	130	160	200
4	SLIDE ADJUSTMENT	70	90	120
5	SPM	60	50	45
6	SHUT HEIGHT	300 MM	360 MM	400 MM
7	BOLSTER AREA	900X520 MM	1150X680 MM	1250X800 MM
8	BOLSTER THICKNESS	120 MM	140 MM	140 MM
9	FLOOR TO TOP OF BOLSTER	860 MM	900 MM	900 MM
10	SLIDE AREA	500X400 MM	650X520 MM	700X580 MM
11	MOTOR POWER	7.5 HP	10 HP	15 HP
12	DIE CUSHION STROKE LENGTH	70 MM	90 MM	100 MM
13	DIE CUSHION PAD AREA	380X260 MM	480X300	600X450 MM



All power presses are based on pneumatic clutch controller and equipped with dual hand operation and photo electric sensors.

MACHINE SPECIFICATIONS – POWER PRESS



S.NO.	SPECIFICATION	TONNAGE	
		300 TON	450 TON
1	MAKE	ISGEC	ISGEC
2	RATED DISTANCE (RATING POINT)	8 MM	10 MM
3	STROKE LENGTH - FIXED	250	250
4	SLIDE ADJUSTMENT	125	150
5	SPM	40	30
6	SHUT HEIGHT	600 MM	700 MM
7	BOLSTER AREA	1300 X 950 MM	1400X1200 MM
8	BOLSTER THICKNESS	160 MM	140 MM
9	FLOOR TO TOP OF BOLSTER	1200 MM	850 MM
10	SLIDE AREA	1100 X 700 MM	1250 X1100MM
11	MOTOR POWER	22.5 KW	45 KW
12	DIE CUSHION STROKE LENGTH	125 MM	150 MM
13	DIE CUSHION PAD AREA	600 X 560 MM	700 X 400 MM

All power presses are pneumatic clutch controller based equipped with dual hand operation and photo electric sensors.

MACHINE SPECIFICATIONS – MACHINING



SLC-20LM CNC TURNING /
COLT LM CNC TURNING



MCV 300 VERTICAL MILLING

MACHINE SPECIFICATIONS – NEW MACHINES



A20 CITIZEN SLIDING HEAD

50 T BRUDERER HIGH SPEED PRESS



MACHINE SPECIFICATIONS – TESTING LAB



PLATING THICKNESS TESTER



SURFACE ROUGHNESS TESTER



VMM

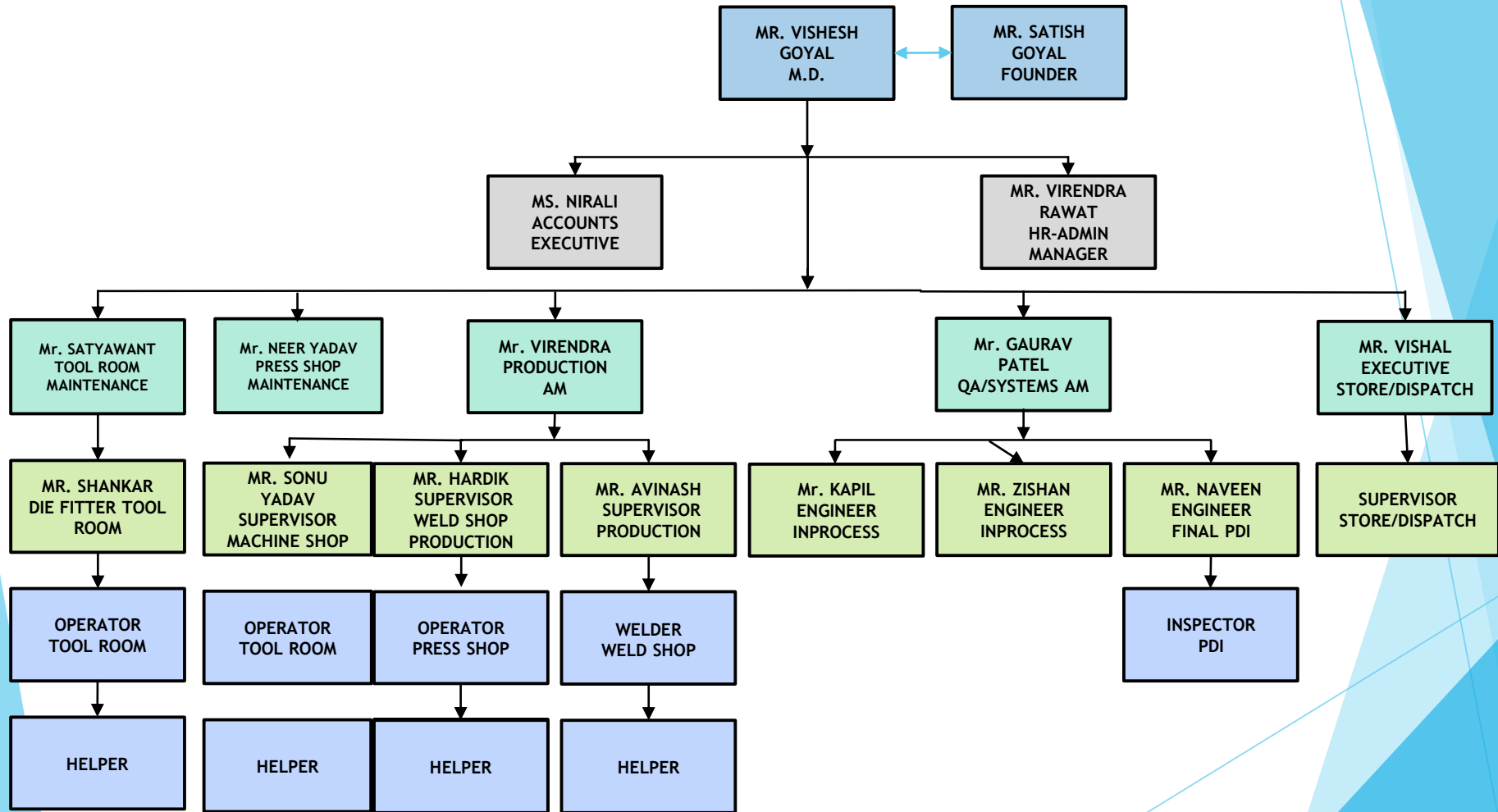
MeasurLink ENABLED
Data Management Software by Mitutoyo

Status Monitor
Condition Monitor



CMM

ORGANISATION STRUCTURE



CONCLUSION

- AtomOne Technologies has demonstratable experience, capacity, capability and willingness to be a long-term reliable strategic partner for its esteemed customers
- Early investment in two plants in Gujarat (Workable shop floor area of 1.25 Lakh Sq. Ft) in the vicinity of our esteemed customers is a testimony of our commitment.
- We are committed in providing highest quality products & services alongside an experience of highly professional & committed working relationship.
- AtomOne is open to partnering with and serving its customers in the areas of press-stampings , welding , machining & plastic injection moulding and any other engineering solution based on customer needs.

THANK YOU!

Mr. Vishesh Goyal

Phone : +91-9999761226

Email: visheshgoyal@atomone.in

OFFICE ADDRESS:

AtomOne Manufacturing Company
56D/2 INSUTRIAL AREA,
NIT FARIDABAD, HARYANA
INDIA -121001

Phone : +91-129-4176107

Email: Visheshgoyal@atomone.in

PLANT ADDRESS :

PLOT NO. D1,D1a,D2,D2a, E8 & E21
MASCOT INDUSTRIAL PARK,
JADAVPURA CROSS ROAD,
KADI-VITHALAPUR HIGHWAY,
DIST – MEHSANA,
GUJARAT - 382715, INDIA

ISO 9001:2015 CERTIFIED