



We justify your trust



HISTORY

35+ YEARS OF EXPERIENCE



1986

FOUNDATION
FOCUS ON HEAT TREATMENT



1994

PRODUCTION OF SPARE PARTS AND
COMPONENTS FOR POWER TRANSMISSIONS
AND GEAR BOXES FOR TRUCKS



2002

PRODUCTION OF SPARE PARTS, COMPONENTS AND
ASSEMBLIES FOR THE NEEDS OF AUTOMOBILE
INDUSTRY RESEARCH AND DEVELOPMENT CENTERS



2012

CONSTRUCTION OF THE FIRST BUILDING AT OUR
NEW PRODUCTION SITE



2017

EXPANDING THE PRODUCTION SITE
WITH 2 NEW WORKSHOPS



2023

INSTALLING A SOLAR PANEL SYSTEM IN ORDER TO
REDUCE THE COMPANY'S CARBON FOOTPRINT

1992

BESIDES HEAT TREATMENT,
LAUNCH OF IT'S OWN MACHINING PROGRAM



1996

PRODUCTION OF SPARE PARTS
AND LATER COMPLETE AUXILIARY MACHINERY
FOR AGRICULTURE, A PRODUCTION PROGRAM
MAINTAINED TO THIS DAY



2008

IMPLEMENTATION OF ISO 9001
QUALITY STANDARD



2015

IMPLEMENTATION OF ISO 14001
AND OHSAS 18001 QUALITY STANDARDS



2020

SUCCESSFULLY DIVERSIFYING OUR
PRODUCTION, OPENING UP TO MULTIPLE INDUSTRIES



ABOUT **US**

“Termometal” Ltd. Ada has more than 35 years of experience in machining. It started its operations in 1986 as a small workshop for heat treatment. Thanks to its dynamic development, it quickly outgrew the small industrial enterprises and continuously expanded its range of activities.

In 1992, in addition to heat treatment, it launched its own machining program, and in 1994, it started producing spare parts and components for power transmission and gearboxes for trucks. Starting in 1996, Termometal began producing spare parts for agricultural implements, and later expanded further into manufacturing complete machines – a production program it has maintained to this day.

Thanks to successful business management and the recognition that continuous modernization of machinery and equipment is essential, since 2002, the foundation of Termometal's development has been the production of spare parts, components, and assemblies for automotive research and development centers.

Since 2020, our production diversification has contributed to the fact that today, beyond the automotive industry, new collaborations have been established in multiple industries which include pharmaceutical, packaging, food processing, wood processing and aircraft industries.

Today “Termometal” Ltd. Ada counts more than 600 employees, and our team is considered the most valuable asset in our activity. Thanks to their organized and well-harmonized work, we are able to offer more than 10.000 hours of weekly capacity to our customers, that are spread across two production locations, which cover more than 25.000m².

Paying exceptional attention to satisfying the customer's needs, the company standardized its processes, which resulted in the fact that we are proud owners of 4 ISO certifications: ISO 9001, ISO 14001, ISO 45001 and ISO 3834-2.

Our commitment to finding sustainable solutions in our activities, in order to reduce the carbon footprint and other negative effects to the environment, led us to invest significant resources and efforts in this field. The most significant progress in this area was marked in 2023 when the roofs of our facilities were equipped with solar panels that produce 1 MW of sustainable power, covering 35% of our total electricity needs.

We, at “Termometal” Ltd. Ada, are not just manufacturers; we are partners in progress, dedicated to shaping a brighter, greener future, which is a clear message to our customers that:

WE JUSTIFY YOUR TRUST



TECHNOLOGICAL ABILITIES

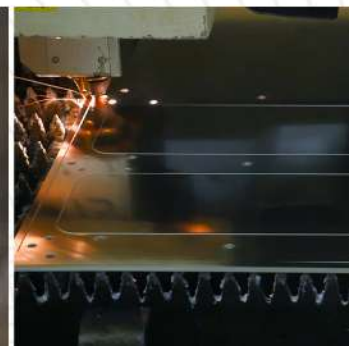
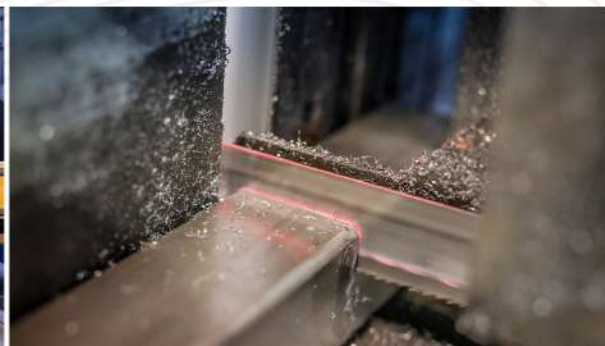
- CUTTING
- CNC TURNING
- CNC MILLING
- PLATE BENDING
- GRINDING
- WIRE CUTTING
- WELDING
- HEAT TREATMENT
- POLISHING
- SURFACE CLEANING
- CHEMICAL SURFACE TREATMENT
- PAINTING
- ASSEMBLY
- QUALITY CONTROL



We justify your trust

CUTTING

- Band and frame saw cutting up to $\varnothing 500$ mm
- Steel plate frame cutting – according to template
- Plate cutting with snips – 8x3000 mm
- Plate cutting with circular snips – 6x $\varnothing 900$ mm
- Water jet – 4000x2000x150 mm
- CNC plasma or flame cutting 2000x6000 mm
 - Steels up to 64 mm
 - Stainless steel up to 35 mm
 - Aluminum up to 35 mm
- CNC flame cutting – steel up to 120 mm
- CNC laser cutting – 6100x2500 mm table dimension
 - Steel max 35 mm
 - Stainless steel max 25 mm
 - Aluminum - max 30 mm
 - Exactness ± 0.05 mm



TURNING

- CNC turning – exactness 0.02 mm
- CNC turning - $\varnothing 480 \times 520$ mm
- Universal turning - $\varnothing 1000 \times 1500$ mm



CNC MILLING

- Precision CNC machining up to 1020x510x450 mm
-Exactness 0.003 mm
- 3+2 axle up to 5200x1300x2000 mm
-Exactness 0.03 mm
- 3+1 axle up to 4000x2000x3000 mm
-Exactness 0.03 mm
- 5 axle simultan CNC milling up to 800x800x550
-Exactness 0.008 mm

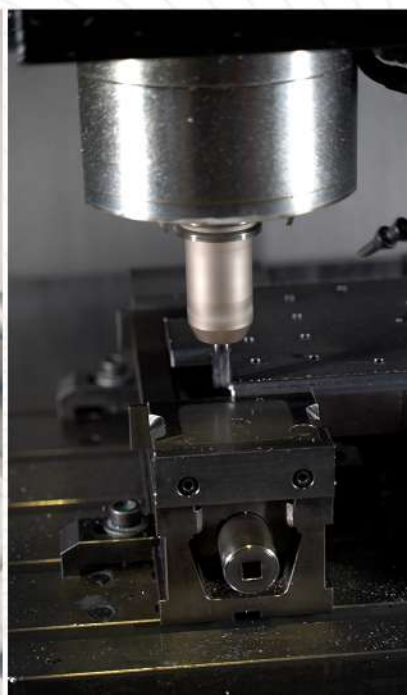


PLATE BENDING

- Bending power 320 t
- Bending length 4050 mm
- 8 axis CNC control
- Throat depth 350 mm, Stroke 200 mm
- Laser angle measurement system



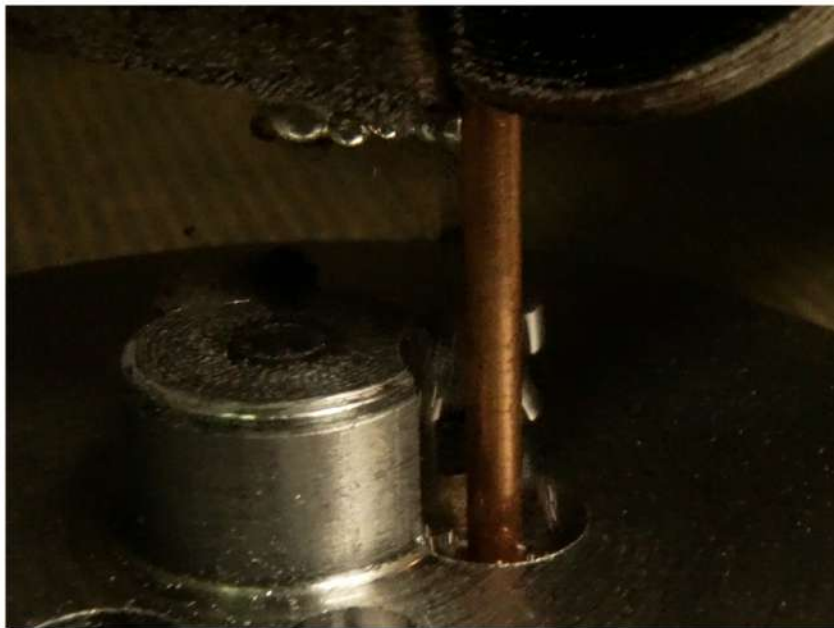
GRINDING

- Universal grinding $\varnothing 360 \times 1500$ mm
 - Tool diameter max $\varnothing 50$ mm up to $\varnothing 200$ mm
- External CNC $\varnothing 360 \times 1000$ mm
- Internal grinding $\varnothing 340 \times 200$ mm
- Flat grinding $2000(1600) \times 750 \times 400$ mm
- Tool grinding $150 \times 150 \times 200$ mm



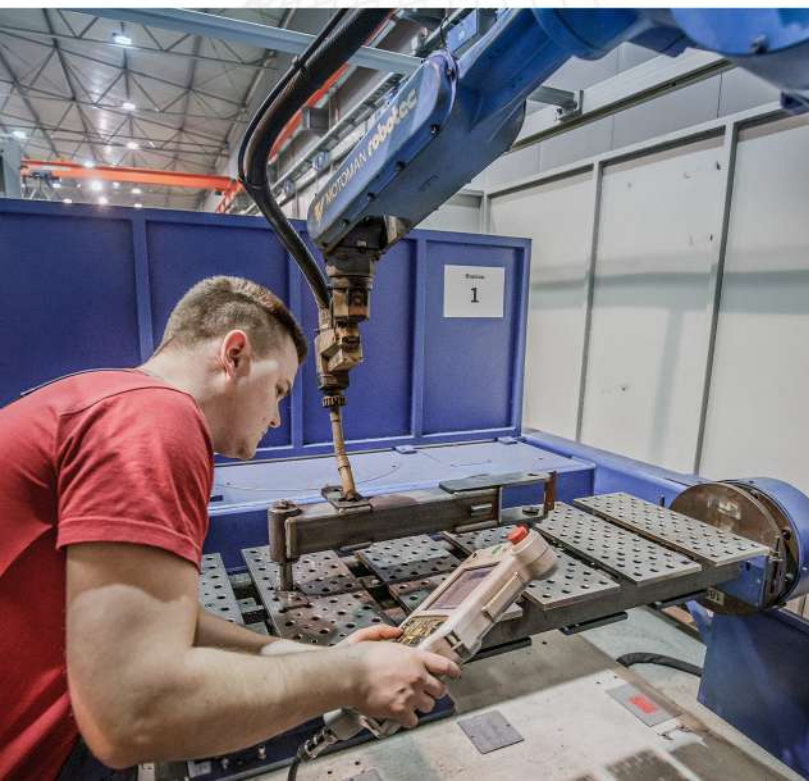
WIRE CUTTING

- Exactness up to 0.003 mm
 - Possibility for cutting edged up to $\pm 10^\circ$
 - Wire cut 600x450x400 mm
- Sink eroder 1000x700x600 mm



WELDING

- Gas tungsten arc welding GTAW (TIG)
- Metal arc welding MMA (REL)
- MIG / MAG welding
- Metal inert gas / Metal active gas
- Laser welding up to 2000 Watt
- Robot Welding



HEAT TREATMENT

- Furnace for case hardening,
-Annealing and tempering 600x1100x600 mm up to 960 °C
- Flowing furnace for annealing and tempering
-400x150 mm up to 850 °C
- Plasma and carbo-nitriding 1100x750x1200 mm
- Tension removal – Stress relief 3700x2250x1000 mm



POLISHING

- Dry Polishing
- Wet Polishing
- Line Polishing



SURFACE CLEANING

- Shot blasting with steel balls 7000x4000x4000 mm
- Sand blasting 1000x700x800 mm
- Glass bead blasting 4000x3000x6000 mm



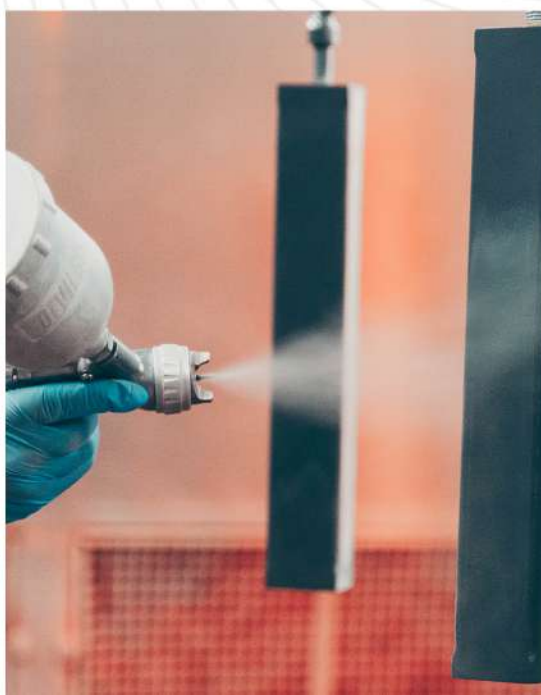
CHEMICAL SURFACE TREATMENT

- Anodizing line with possibility of hard coating -900x600x400 mm
- Chemical nickel plating 380x550x850 mm
- Galvanizing line 2300x550x1000 mm
- Black finishing 500x750x850 mm



PAINTING

- Powder painting 1100x4000x1400 mm
- Wet painting
- Drying chamber up to 70 °C - 7000x4000x3000 mm



ASSEMBLY

- Mechanical assembly
- Pneumatic assembly
- Hydraulic assembly
- Electrical wiring

1500m² of well-equipped, modern assembly area
650 hours of weekly assembly capacity

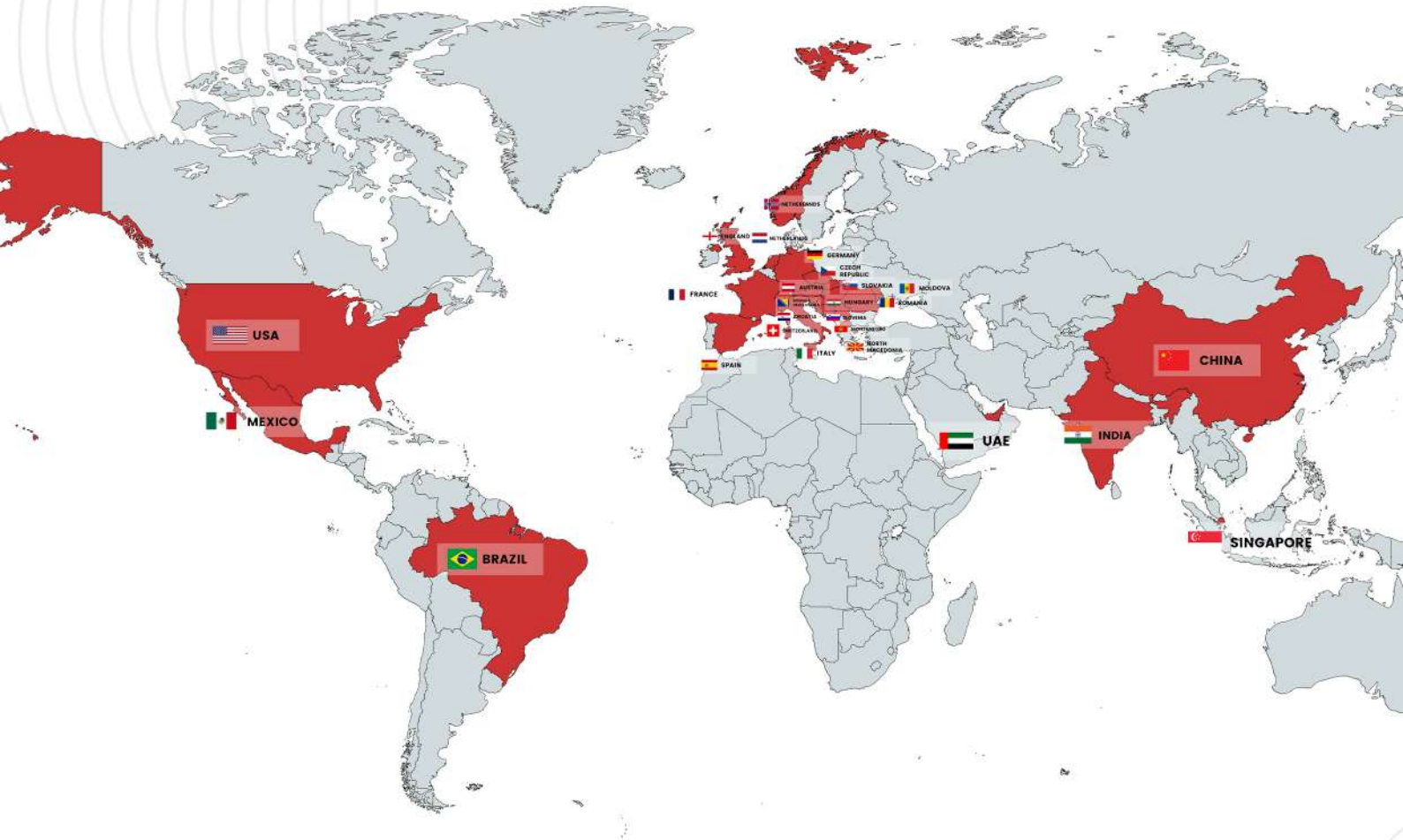


QUALITY CONTROL

- 3 Coordinated CNC Measuring Machines
- 1200x2400x800 mm (Zeiss Contura)
- Hardness tester < 70 HRC
- Measuring arm R=1200 mm



WE DELIVER WORLDWIDE



- | | | | | |
|------------------------|-----------|------------|---------------|-------------------|
| ● Austria | ● Mexico | ● USA | ● Romania | ● North Macedonia |
| ● France | ● Hungary | ● Singapur | ● Slovakia | ● Slovenia |
| ● Bosnia & Herzegovina | ● Croatia | ● China | ● Moldova | ● Spain |
| ● Germany | ● Italy | ● India | ● Montenegro | ● Switzerland |
| ● Czech Republic | ● England | ● Brazil | ● Netherlands | ● UAE |
| | | ● Norway | | |

SUSTAINABILITY



In the modern world, where questions of sustainability and responsibility are becoming increasingly important, we recognize not only the moral but also the business obligation to act responsibly towards the environment. We have become resolved to take a step towards a greener future and self-sustainability. Environmental consciousness, selective waste collection, CO² reduction, and anything that diminishes our ecological footprint have been prioritized. As a result of this initiative, we installed solar panels in 2023 with a capacity reaching 1 MW. Through this development, Termometal Ltd. is capable of generating 35% of its annual energy consumption through self-sufficiency. This achievement contributes not only to our company but also to our entire community in shaping a sustainable future.





**WE ARE THE
SOLUTION**



24430 ADA - Vojvodina - Serbia
Industrijska ulica 12
INFO@TERMOMETAL-ADA.COM