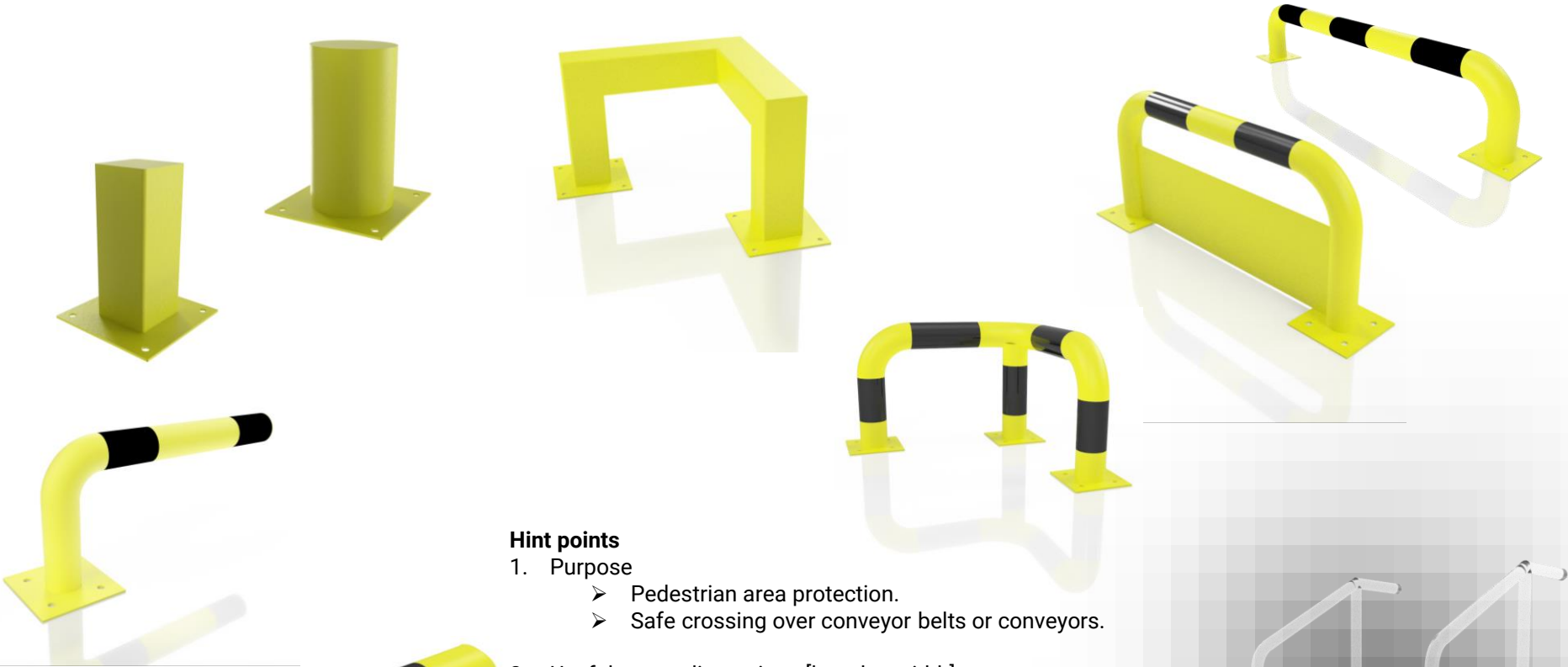




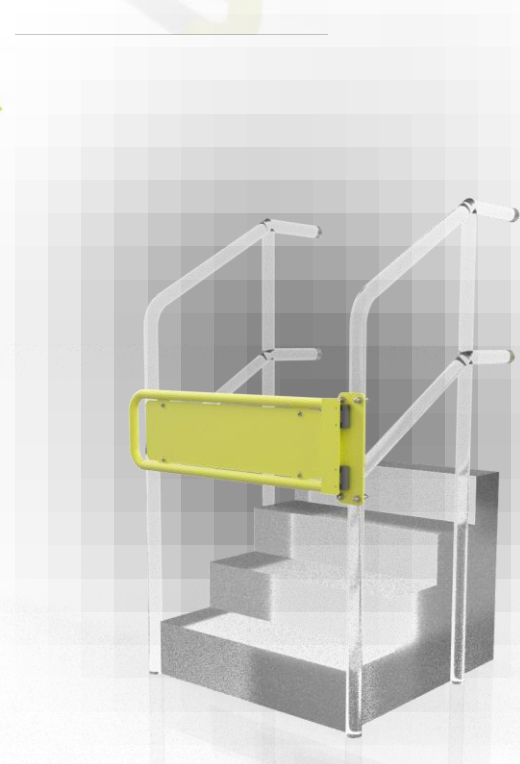
## ➤ Safety barriers

- Pillars, obstacles, fences and security doors.



### Hint points

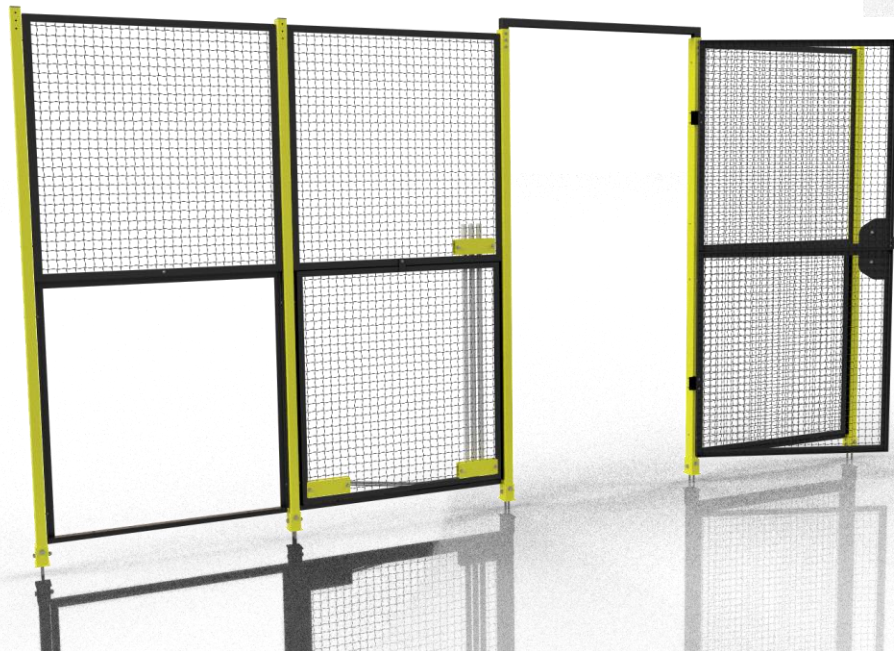
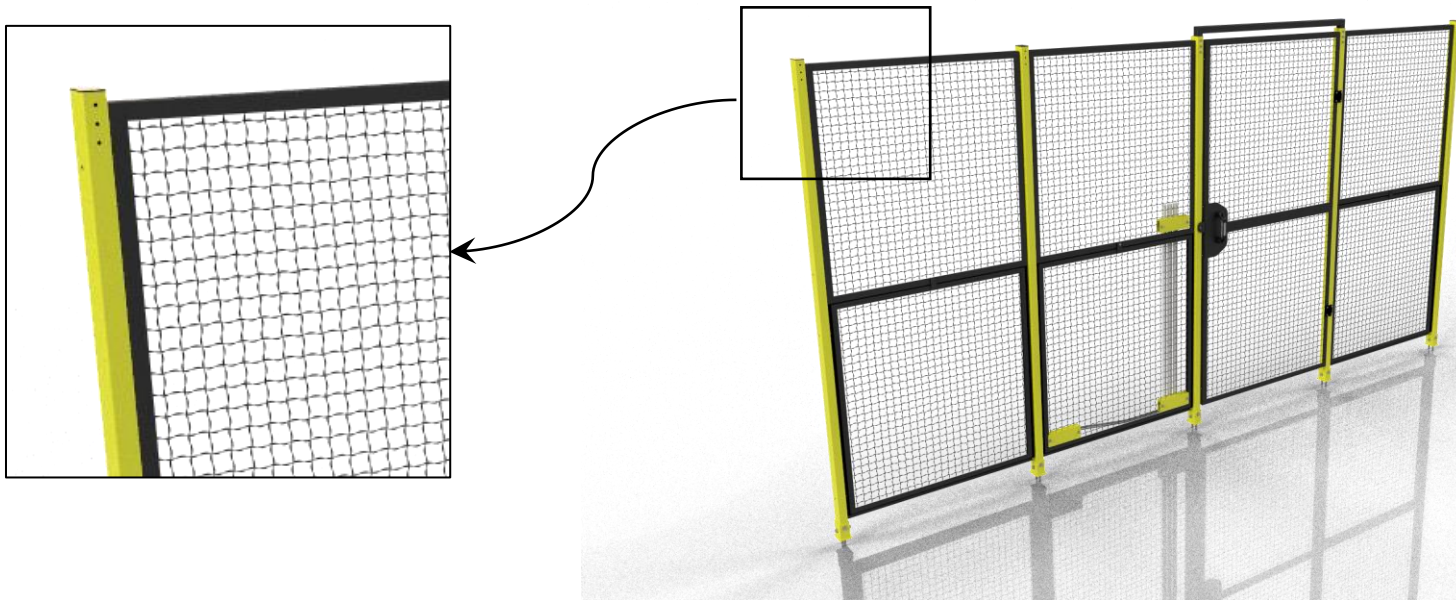
1. Purpose
  - Pedestrian area protection.
  - Safe crossing over conveyor belts or conveyors.
2. Useful space dimensions [length x width]
  - Upon request.
3. Materials from which they are produced:
  - Mild steel S235 (EN 10025);
  - INOX (stainless steel), 1.4301 (EN/Wr).
4. Anti-corrosive protection
  - Painting or powder coating;
  - Galvanisation.
5. Upon customer demand
  - Various equipment;
  - ESD properties.





## ➤ **Safety fences**

- *Safety fences around automatic machines or robotic production cells.*



### **Hint points**

1. Purpose
  - Protection of the working space of the machine.
  - Safe operation of automatic machines or robotic cells.
2. Useful space dimensions [length x width]
  - Upon request.
3. Materials from which they are produced:
  - Mild steel S235 (EN 10025);
  - INOX (stainless steel), 1.4301 (EN/Wr).
4. Anti-corrosive protection
  - Painting or powder coating;
  - Galvanisation.
5. Upon customer demand
  - Various equipment;
  - ESD properties.

# Our contact data

## SOLINTECH

SOLUTIONS IN TECHNOLOGY

**Engineering of equipment, tools and devices for production lines.**



*Contact person: Konstantin Jasnić*



*Cell phone: +381 69 / 177 82 91*



*e-mail: [office@solintech.rs](mailto:office@solintech.rs)*



*Web-site: [www.solintech.rs](http://www.solintech.rs)*



*Address: Djordja Markovica 34, 22400 Ruma, Republic of Serbia*