

Vent Cap for Automotive



Sang-A Frontec's vent products inserted laminated from ePTFE membrane and supports with hundreds of millions nano-sized pores per cm^2 and they have excellent permeability to maintain pressure balance outside and inside component using cases so that they can protect sealing from mechanical damages, prevent contaminants and avoid internal condensation with waterproofing functions. Various types of products can be provided depending on purposes.

Feature

- Applying to car head lamps, rear lamps, and fog lamps to maintain thermal equilibrium
- Prevent water from entering and quickly expel moisture from the inside
- Snap-in type easy to insert into structure



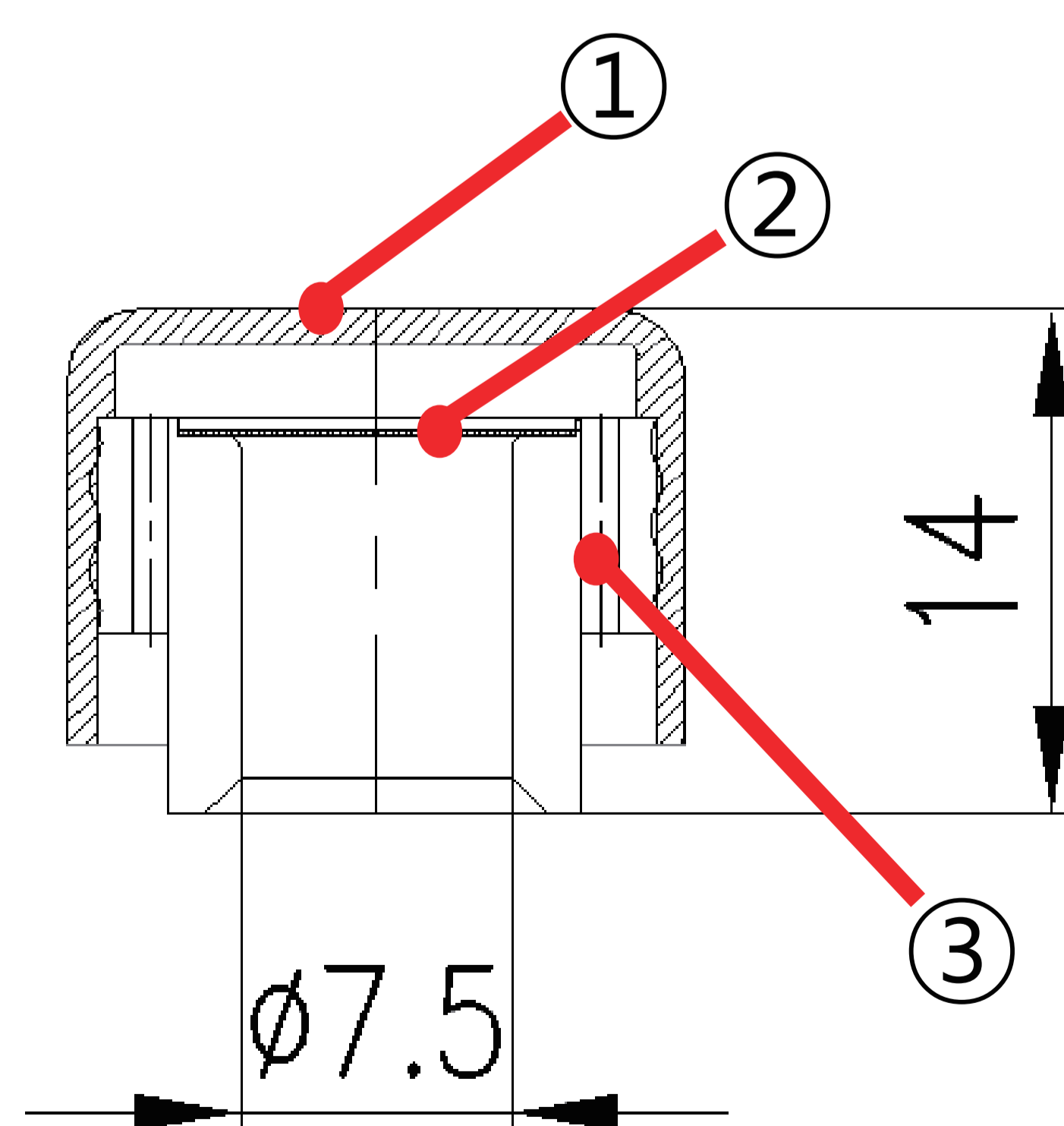
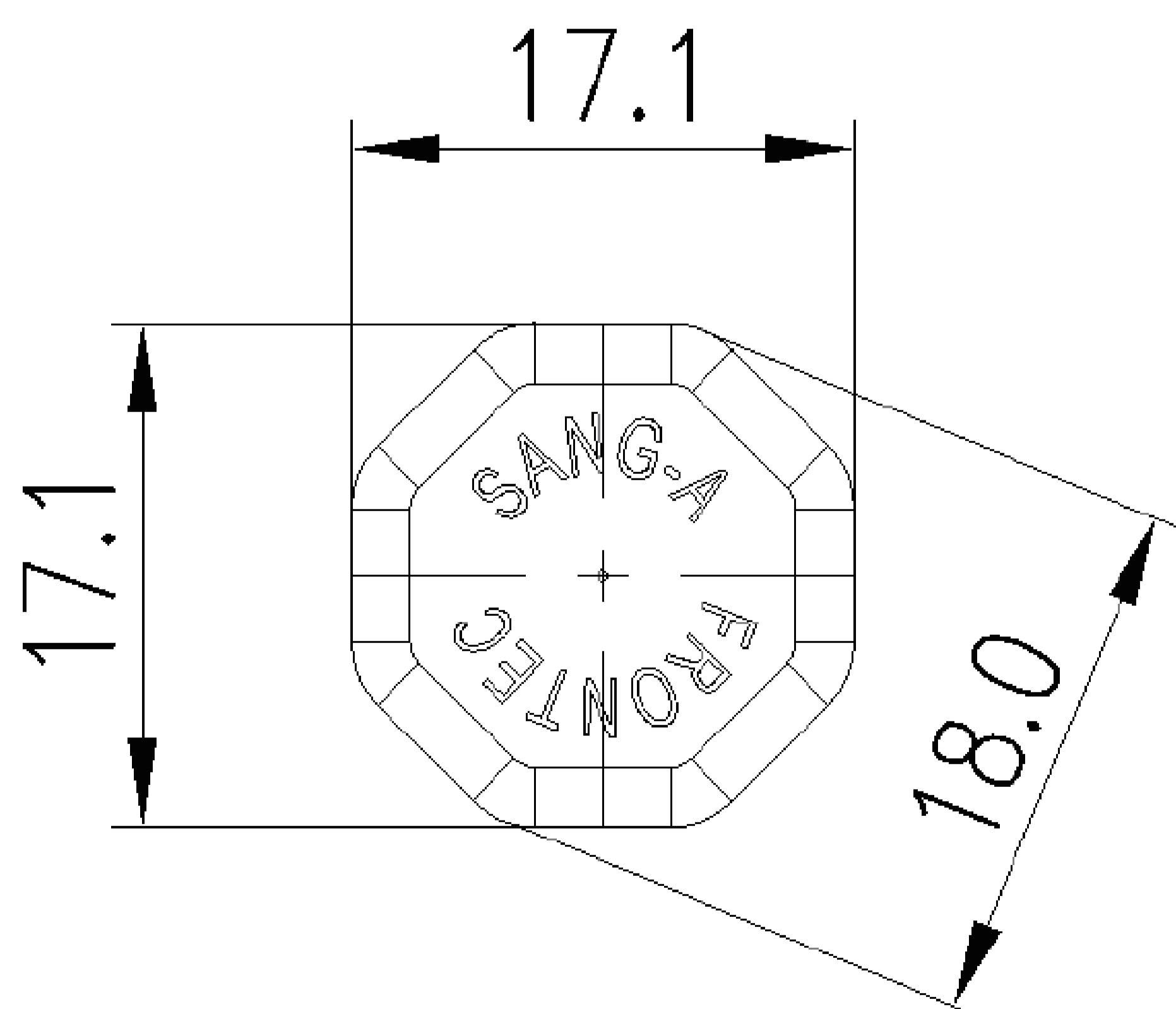
Typical properties

Model No.	Color	Water entry pressure (kPa)	Air permeability (mL/kPa/min)
SV-DWP02	BLACK	≥ 60	≥ 50
SV-DWP03	GRAY	≥ 10	$\geq 1,300$
SV-DWP27	BROWN	≥ 3	$\geq 4,000$

* Water entry pressure : 30sec > 350mbar / Air permeability : 22.2 L/H (@ 70mbar)

※ Above data may vary depending on measuring conditions and is not guarantee product quality

Structure & Dimension



No.	Parts Name	Material
①	Cap	PP
②	Membrane	ePTFE+PET
③	Fixing Rubber	Elastomer