

## Products



Cylinder Liner (Wet Liner)



Cylinder Sleeves (Dry Liner)



Wide Product Range of Liners

### ► Our range suitable for :



Tractors



Light Vehicles



Heavy Trucks



Cars



Earth Movers



More than **25** countries around the globe.

**METRO<sup>®</sup>**  
ENGINE PARTS



Leading Manufacturer  
& Exporter of  
Cylinder Liners & Sleeves

Scan for web



**J.D. LINERS**  
"Kiran House" 2-Sanskar Society,  
Aji Ring Road By Pass,  
RAJKOT-360003. GUJARAT (INDIA).  
www.jdliners.com skype : sam.patel34

Scan for download catalog



**J.J. AUTOLINK PVT. LTD**  
1-2, Sanskar Society, Aji Ring Road By Pass,  
RAJKOT-360003. GUJARAT (INDIA).  
Mobile No. +91-9537726323  
email. sam@jdliners.com, info@jdliners.com

LATEST

**J.J. AUTOLINK PVT. LTD**

An ISO 9001:2015 certified company

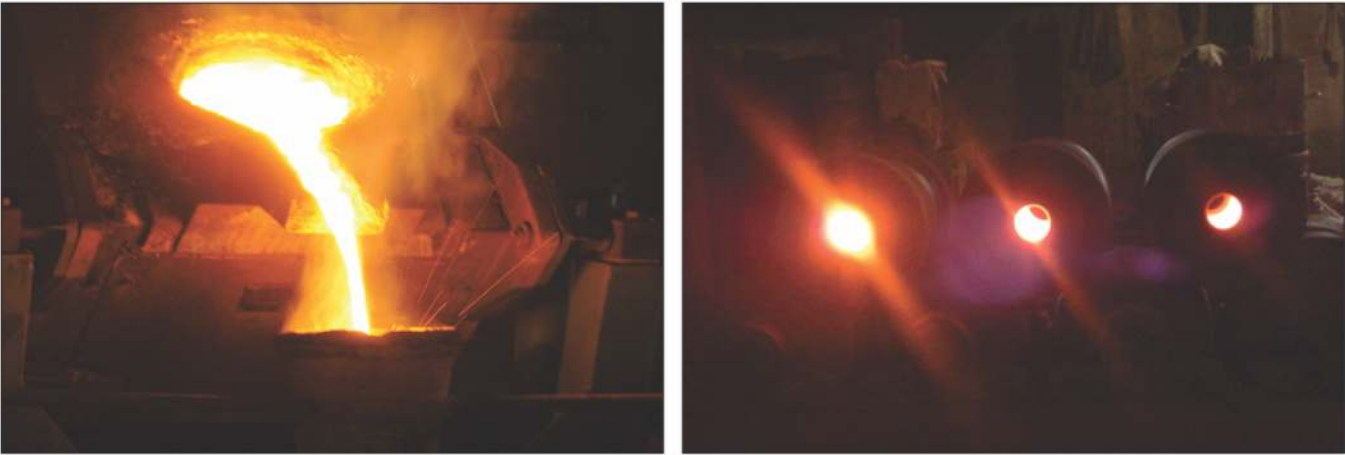


## Company Profile

## Manufacturing Process

## Technical Specification

### Foundry Division



#### Induction Melting and Centrifugal Casting

Casting of Cylinder liners and Cylinder Sleeves is done in grey cast iron of GG25 Grade. In such a way so as to achieve prelastic structure free from ferrite and graphite (max up to 2-3%). They are casted by centrifugal casting process so as to achieve compact structure and high strength as well as desired wear resistance, hardness and tensile strength.

### High-tech Workshop



Vertical CNC

CNC Machines High Speed

Our workshop is equipped with high-tech SPM(Special purpose machines) for outer semi turning and CNC machines for final turning, Vertical boring machines for highly accurate inner turning operations.

Our high-tech honing machines make it possible to achieve required quality parameters like surface finish Ra and Rt.

Advanced grinning machines are used for outer grinning on dry type of cylinder liners to get outer diameter within the accurate tolerance.

We are having in-house laser marking facilities.



Plateau Honing Machine

### Raw Material

Normal Composition of casting as per A-159(G1800 to G-4000) Grade

Constituents	Composition (Min-Max)
Carbon	3 to 3.5%
Silicon	1.8 to 2.4%
Manganese	0.60 to 1%
Sulphur	0.15%
Phosphorous	0.20 to 0.40%

Constituents	Composition (Min-Max)
Chromium	As Required
Moly	As Required
Copper	As Required
Nickel	As Required
Vanadium	As Required

**Process** : Centrifugal Casting and Shell Moulding

**Hardness** : Min 200Bhn-Max 260BHN

**Tensile Strength** : kgf/mm2-min 25.

Micro Structure	
Matrix	Pearlite
Graphite	A & B Type
Free Ferrite	Max. 5%
Free Carbide	Max. 5%

Dimension for Dry and wet liner Full Finish	
Inner Diameter	40-250 mm
Outer Diameter	45-350 mm
Length	Up to 375 mm

Dimension for Dry and wet liner Semi Finish		
Description	Wet Type	Dry Type
Inner Diameter	40-250 mm	40-325 mm
Outer Diameter	45-350 mm	45-350 mm
Length	Up to 375 mm	Up to 700 mm



#### Company Profile

**J.J. Autolink Pvt. Ltd.**, an ISO 9001:2015 certified company, established in 1985; manufactures and exports cylinder liner and sleeve for different automotive vehicles under the brand name 'METRO' and 'JD' cylinder liner India.

Attaining rich and diverse exposure in manufacturing and exporting Cylinder Liner and Sleeve products over 3 decades, **J.J. Autolink Pvt. Ltd.** has gained valuable clients from the industry.

Our manufacturing unit is equipped with modern technologies along with technically sound management team and qualified engineers for manufacturing faultless products, which ensures adequate process control to produce right kind of Cylinder liner and sleeve. Including specified grade raw materials like molly nickel, chromium, silicon, carbon and phosphorous in manufacturing process, we ensure best quality cylinder liners and sleeves. Anti-corrosion property of cylinder liners and sleeves is further enhanced by adding chromium in the metal.

#### Our strength :

- Efficient management
- Skilled professional team
- State-of-art infrastructure
- Standard process
- Adhering to quality

