

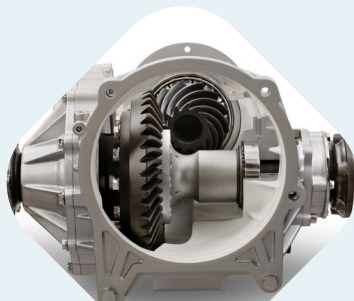
TOP-QUALITY

AUTOMOTIVE PARTS

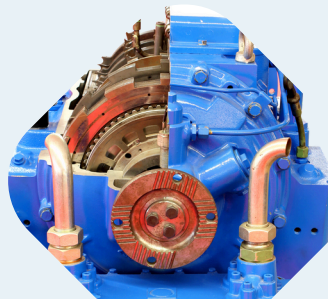


We manufacture & export premium range of products used in Automobile Components, Agriculture Equipment Parts, Defense Vehicle Parts, Mining Equipment Parts, Passenger cars Parts used in Axles, Driveline, Gear Boxes, Brakes & Transmission Assembly since 1972.

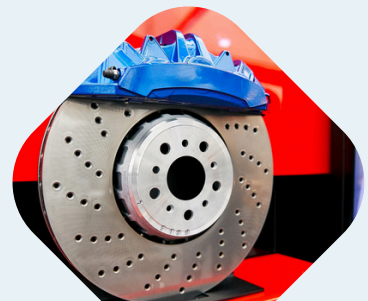
**OUR
EXPERTISE**



**AXLE
DRIVEHEADS
PARTS**



**TRANSMISSION
SYSTEM PARTS**



**BRAKE
SYSTEM PARTS**

CONTACT INFORMATION

+91(0) 9619394412
+91(0) 9820115959

connect@fourstarindustries.com

www.fourstarindustries.com



FSI **FOUR STAR**
INDUSTRIES
Pioneers in Differential Spiders

BUSINESS COMPANY PROFILE

www.fourstarindustries.com

Table of Content

1	Welcome Message	1
2	Corporate Identity	2
3	Company Background	3
4	Our Facilities	4
5	Vision & Mission	6
6	Our Team	7
7	Quality Policy & Statement	8
8	Company History	9
9	Company Overview	10
10	To Whom We Serve?	11
11	Our Products	13
12	What We Have?	16
13	How We Protect Our Parts?	19
14	How We Inspect Our Parts?	20
15	Our Metallurgical Lab	21
16	Our Key Strength	22
17	Our Clientele	23
18	Where Our Parts Reach?	24

Welcome Message



Nikhil Shah
Partner of Company

Since its foundation in 1972, Four Star Industries with brand name **FSI** has held a great deal of pride for being recognized as a pioneer in the Differential Spiders in India and has endeavoured to become a leading company of change and development through continuous business innovation and technology development.

“ **Four Star Industries** is committed to the realization of Customer satisfaction through change, innovation, challenge, passion, communication and cooperation. “

The 21st century is the age of opportunity while also being an era of change where it is difficult to predict the future.

I'd like ask for your everlasting interest and support for FSI to emerge as a world-class company specialized in automotive parts. I sincerely hope that you and your families will always remain in good health and have good luck.

Thank you.



Corporate Identity

Meaning

Embodying a meaning to be a company that sustains change and innovation as well as places high value on human life, it symbolizes a dove soaring powerfully in the sky. The gray & cyan color of CI represents youth, the thirst for challenge and trust, and it means to be a global company through the support of all employees working together based on trust.

Symbol Mark



Company Background



Since its foundation in 1972, Four Star Industries has been a leader of the auto parts industry with brand name FSI and has become a company that is driving change and development through continuous business innovation and technology development. With confidence, we can claim that the history of the auto parts industry in India parallels that of Four Star Industries. Furthermore, we are committed to not only seeing the company lead the auto parts industry in India, but globally.



All of its affiliates have formed the company that have implemented technology based on core competence. Through its people-oriented management philosophy, the group and each of its employees have enacted and complied with the internal code of ethics and conduct for clear and transparent management that contributes to customers and local communities.

We are having extended scope of manufacturing the products with a fully equipped infrastructure for Production, Quality & Testing for the Supply chain.



Our Facilities



Head office & Manufacturing Plant - I Machining Division

Thane, Mumbai, India

Unit No. 6, 7 & 30, Om Anand Industrial Estate, Raghunath Nagar, Thane, Mumbai, India - 400 604

Production Area : 2000 ft²



Manufacturing Plant - II Machining & Surface Treatment

Chakan, Pune, India

PAP G-27, Chakan Industrial Area Phase III, Nighoje, Taluka - Khed, Dist - Pune, India - 410 501

Production Area : 8200 ft²



Manufacturing Plant - III Machining Division

Bhiwandi, Mumbai, India

Gala No. 15 & 16, Radha Krishna Industrial Park, Taluka - Bhiwandi, District - Thane, Mumbai, India - 421 311

Production Area : 5000 ft²



Our Facilities



Manufacturing Plant - IV Special Purpose Machining Division

Chakan, Pune, India

Plot No D 9, Chakan Industrial Area Phase III,
Nighoje, Taluka - Khed, Dist - Pune, India -
410 501

Production Area : 11000 ft²



Facility Scope

- Surface Broaching
- CNC Gear Hobbing with Extended Hob Head
- Internal Broaching
- Induction Hardening
- Plasma Cutting
- Vertical Turning Center (VTL)
- Hydraulic Press



Manufacturing Plant - V Surface Treatment Division

Supa, Pune, India

Plot No B 51/2, Supa MIDC, Taluka - Parner,
District - Ahmednagar, India - 414 501

Production Area : 3500 ft²



Vision and Mission

Vision

We will establish FOUR STAR INDUSTRIES as the “exclusive & trusted brand” of Customers by delivering right Quality at first time & every time in all Products delivered through people having passion to deliver excellence in everything we do.

Mission

We are dedicated, proactive, loyal & accountable group of People having quest for excellence by adopting new technologies, people empowerment & always exceed the changing needs of our Customers by providing value added products on time.

OUR TEAM



Bipinchandra Shah

Founder & Partner

Mr. Bipinchandra Shah is the Partner of "Four Star Industries", which he incorporated in 1972. He born on 07 November 1948 in Dhule, Maharashtra, India. He worked as a Production Head at the **R J Engineering works (Ancillary Unit of Mahindra Tractors Limited), Mumbai**, after earning his Bachelor Degree in 1970. A serial entrepreneur with a passion for innovative ideas and capability of manufacturing process developments, he took **FSI** to the high level of success.

Nikhil Shah

Partner

Mr. Nikhil Shah is another Partner in the company, who born on 20 December 1975. He joined the "Four Star Industries" in early 2000 to extend the family business further after successfully completion of his Bachelors degree, from Mumbai University. He is always interested in adopting the new technologies to upgrade the companies infrastructure. Because of his in depth analysis of the cases, he is having experiences in many fields in the manufacturing field.



Rajesh Dhokale

Senior Manager Operations

Mr. Rajesh Dhokale, as a visionary leader with excellent management skills and a knack for directing company operations in a growth-minded direction. He Joined "Four Star Industries" in 2010 to lead the company. Mr. Dhokale has been helping company reach their true potential over last 13 years.

With a degree of Engineering in Mechanical from Pune University is no stranger to an interdisciplinary approach to the management & leadership.



Sparsh Shah

Supply Chain Manager

Mr. Sparsh Shah is the future leader of the "Four Star Industries" with excellent in managing all aspects of integrated & lean supply chain management from the inception of customer orders & internal demand to the final delivery. Strongly focused with the ability to complete tasks accurately in a fast-paced environment with conflict deadline.

Mr. Sparsh Completed his Bachelors in early 2022, later he joined the family bussiness successfully running by his father Mr. Nikhil Shah.



Prasenjit Samanta

Plant In-Charge
Machining Division

Mr. Prasenjit Samanta is the backbone of our Machining division. With having experience over 14 years in Precision machining capable to develop the process to make the product within the range of customer specification. He is well qualified in Mechanical Engineering from Mumbai University. He was in the "FSI" Core team since last 5 years. He is leading our SPM Division based in Pune & Bhiwandi, Mumbai.

Nitin Gawade

Plant In-charge
Surface Treatment

Mr. Nitin Gawade is the plating Man in "Four Star Industries". He is core knowledge about various surface treatment used in the industry. Currently he is heading the Surface treatment division in Pune plant where we have almost 5 surface treatment line, like ENP, Zinc Plating, Tin Plating, Manganese Phosphating, Nickel Plating, Etc. He contributing since last 10 years in the "FSI".



Gulab varpe

Senior Metallurgist

Mr. Gulab Varpe is having more than 48 years of metallurgical experience. As a metallurgist Mr. Varpe have great professional relationship with many **OEM's** in Automotive industry, Steel Industry & Agriculture Industry. Mr. Varpe owned his Engineering in Metallurgy degree in early 1980.



Pradip Samanta

Plant In-Charge
Machining Division

Mr. Pradip Samanta, the one who is leading our Machining division in Pune plant, where we have many CNC Turning Lathes, Cylindrical Grindings & Centerless Grinding Machines. He is having great knowledge about Machining & Grinding with experience of 8 years in the industry. He Joined the "Four Star" in late 2020 and now successfully leading the Machining Division in Pune.

Policy and Statement

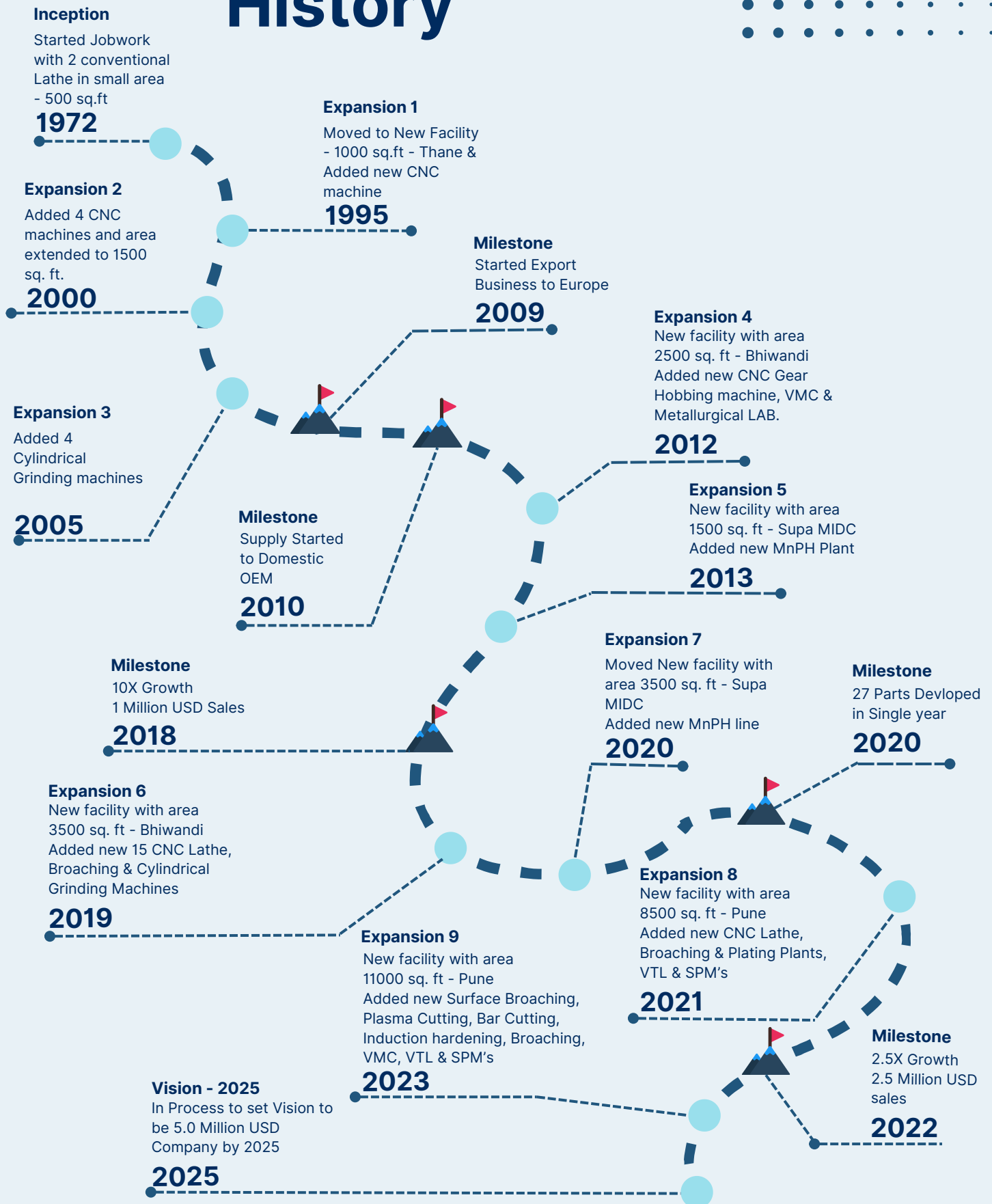
Quality Policy

We, at FOUR STAR INDUSTRIES are committed to enhance customer satisfaction by consistently providing excellence in Quality, Cost, Delivery & Development through continual improvement in our Manufacturing Processes & Quality Management System performance by Total involvement of our Employees and Customers.

Quality Statement

Quality is not an accident. It is always the result of an intelligence and efforts. There must be will to produce a Superior thing.

Company History



Company Overview

- Medium Size Family Business
- Founded by Mr. Bipinchandra Shah in 1972 located in Thane, Mumbai.
- 86 Employees, including 12 highly experienced personals
- turnover in FY 2023-2024: 2.98mn USD
- 641,000 Axle Parts and Transmission parts production in FY2023-2024
- 3200 m² covered production area
- Located in India with fully equipped infrastructure for Production, Quality & Testing & for the Supply chain.
- High Expertise in Development and process design with lot of experience in manufacturing of Vehicle parts, Construction machinery, Agriculture Equipment parts & many other industries.
- inhouse manufacturing capabilities
- Quality Certifications: IATF 16949 & ISO 9001

To whom we serve?



Automobile

Dump Trucks & Other Vehicles

Business : Domestic & Export

Products : Differential Spider, HUB, Diff case, Brake Rotor & Disc, Companion Flanges & Nuts.

Range : 1.5 - 35 kgs



Construction & Mining

Mobile Cranes, Heavy Loaders, Heavy Dump Trucks

Business : Export

Products : Differential Spider, Nuts, Covers & Spring Brackets, Drive Flanges, Rotors.

Range : 1.5 - 35 kgs



Agriculture

Tractors & Other Equipment.

Business : Domestic

Products : Differential Pin, Housing & Yoke, Brake Rotor & Disc, Companion Flanges & Nuts.

Range : 1.0 - 35 kgs



To whom we serve?



Defense

Military Trucks & Other Vehicles

Business : Domestic & Export

Products : Differential Spider, Housing & Yoke, Brake Rotor & Disc, Flanges & Shock Absorber

Range : 0.2 - 35 kgs



Passenger Vehicle

Passenger Cars & Pickup Truck

Business : Domestic & Export

Products : Differential Pin, Differential case, Pivot pins, Piston, Sleeves, Spacers & Gears.

Range : 0.1 - 10 kgs



Public Transport

City Bus & Other Public Vehicle

Business : Domestic

Products : Differential Spider, Diff case, Brake Rotor & Disc, Flanges & Shock Absorber & Nuts.

Range : 0.2 - 35 kgs



Our Products



Differential Spiders & Cross

Sector : Trucks, Buses, Earth Moving Machinery, Agriculture Vehicle, Off Road vehicles.

Range: 0.5 - 16 Kgs

Application : Axle Drive Head Assy

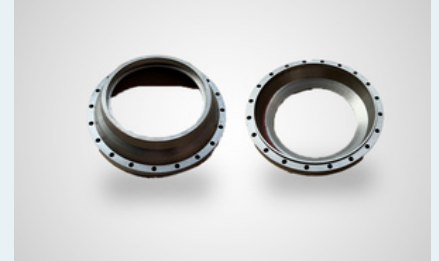


Drive Flanges & Diff Case

Sector : Trucks, Buses, Earth Moving Machinery, Agriculture Vehicle, Off Road vehicles.

Range: 2.5 - 28 Kgs

Application : Axle Drive Head Assy



Casting Hub

Sector : Trucks, Buses, Earth Moving Machinery, Agriculture Vehicle, Off Road vehicles.

Range: 4.0 - 35 Kgs

Application : Axle Assy



Covers & Lid

Sector : Earth Moving Machinery, Agriculture Vehicle

Range: 1.2 - 20 Kgs

Application : Transfer Case Assy



Differential Pin & Pivot Pin

Sector : Passenger cars, Buses, Agriculture Vehicle, Off Road vehicles.

Range: 0.06 - 2.5 Kgs

Application : Axle Drive Head Assy



Lock Nut & Spindle Nut

Sector : Trucks, Buses, Earth Moving Machinery, Agriculture Vehicle, Off Road vehicles.

Range: 0.1 - 8 Kgs

Application : Axle, Gear Box Assy

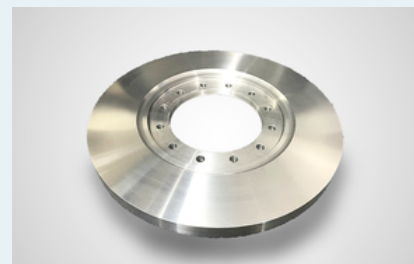


Axle Housing & Flanges

Sector : Trucks, Buses, Earth Moving Machinery, Agriculture Vehicle, Off Road vehicles.

Range: 0.4 - 35 Kgs

Application : Axle & Gear Assy



Brake Disc & Rotors

Sector : Trucks, Buses, Earth Moving Machinery, Agriculture Vehicle, Off Road vehicles, Defense Vehicle

Range: 2 - 32 Kgs

Application : Axle Assy



Brake Pistons

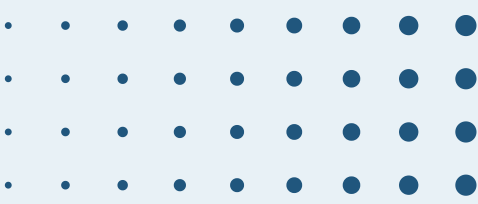
Sector : Trucks, Buses, Earth Moving Machinery, Agriculture Vehicle, Off Road vehicles, Passenger cars

Range: 0.25 - 8 Kgs

Application : Brakes & Axle Assy



Our Products

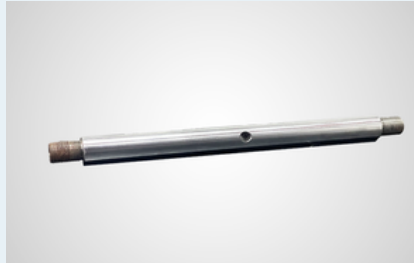


Spring Brackets

Sector : Earth Moving Machinery, Agriculture Vehicle, Off Road vehicles.

Range: 3 - 16 Kgs

Application : Axle Assy

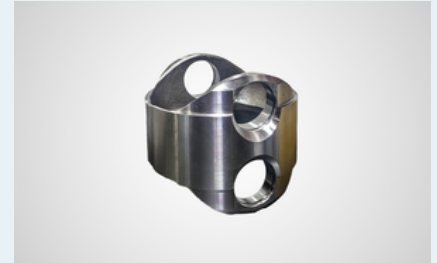


Shock Absorber Pins

Sector : Trucks, Buses, Earth Moving Machinery, Agriculture Vehicle, Off Road vehicles.

Range: 1 - 10 Kgs

Application : Axle Suspension Assy



Housing

Sector : Trucks, Buses, Earth Moving Machinery, Agriculture Vehicle, Off Road vehicles, Defense Vehicle

Range: 2 - 15 Kgs

Application : Axle Drive Head Assy



DS Yoke

Sector : Trucks, Buses, Earth Moving Machinery, Agriculture Vehicle, Off Road vehicles, Defense Vehicle

Range: 1.2 - 20 Kgs

Application : Transfer Case Assy

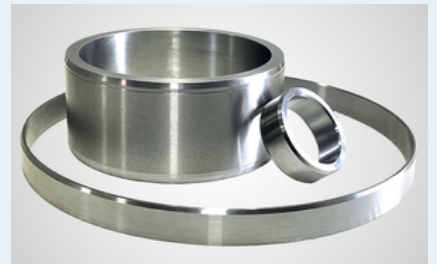


End Yoke

Sector : Trucks, Buses, Earth Moving Machinery, Agriculture Vehicle, Off Road vehicles, Defense Vehicle

Range: 1.5 - 5 Kgs

Application : Axle Drive Head Assy



Sleeves & Spacer

Sector : Trucks, Buses, Earth Moving Machinery, Agriculture Vehicle, Off Road vehicles, Defense Vehicle

Range: 0.1 - 25 Kgs

Application : Transfer case Assy



Input Shaft & Spline Shaft

Sector : Trucks, Buses, Earth Moving Machinery, Agriculture Vehicle, Off Road vehicles.

Range: 2.5 - 20 Kgs

Application : Transmission, Gear Assy



King Pin & Knuckle Pin

Sector : Trucks, Buses, Earth Moving Machinery, Agriculture Vehicle, Off Road vehicles, Defense Vehicle

Range: 2 - 15 Kgs

Application : Axle, Transmission Assy



Planetary Pins & Drivers

Sector : Trucks, Buses, Earth Moving Machinery, Agriculture Vehicle, Off Road vehicles, Passenger cars

Range: 0.25 - 20 Kgs

Application : Axle & Gear Assy

Our Products

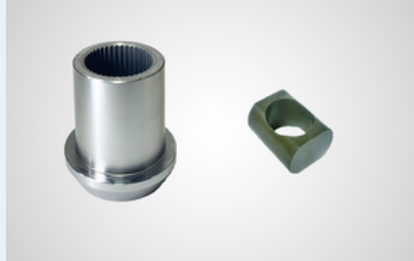


Nylon Rilsan 11 Pins

Sector : Trucks, Buses, Earth Moving Machinery, Agriculture Vehicle, Off Road vehicles, Defense Vehicle

Range: 2 - 16 Kgs

Application : Axle Assy



Bushings

Sector : Trucks, Buses, Earth Moving Machinery, Agriculture Vehicle, Off Road vehicles, Defense Vehicle

Range: 0.06- 10 Kgs

Application : Axle, Transmission Assy



End End

Sector : Trucks, Buses, Earth Moving Machinery, Agriculture Vehicle, Off Road vehicles, Defense Vehicle

Range: 2 - 15 Kgs

Application : Axle Assy



Differential Kit

Sector : Trucks, Buses, Earth Moving Machinery, Agriculture Vehicle, Off Road vehicles, Defense Vehicle

Range: 5 - 30 Kgs

Application : Axle Drive Head Assy



Blech

Sector : Trucks, Buses, Earth Moving Machinery, Agriculture Vehicle, Off Road vehicles, Defense Vehicle

Range: 1.5 - 15 Kgs

Application : Axle, Transmission Assy



Cylinder Head Cap

Sector : Trucks, Buses, Earth Moving Machinery, Agriculture Vehicle, Off Road vehicles, Defense Vehicle

Range: 2 - 25 Kgs

Application : Axle Assy



Perno Pin Tenifer QPQ

Sector : Earth Moving Machinery, Agriculture Vehicle, Off Road vehicles, Defense Vehicle

Range: 0.2- 5 Kgs

Application : Axle, Transmission Assy

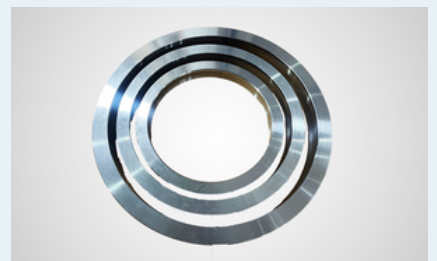


Steering Shaft Lock

Sector : Trucks, Buses, Earth Moving Machinery, Agriculture Vehicle, Off Road vehicles, Defense Vehicle

Range: 2 - 15 Kgs

Application : Axle, Transmission Assy



Variator Ball Ring

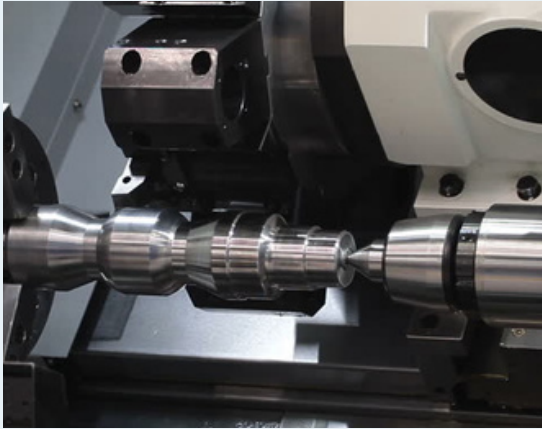
Sector : Speed Variator, Electric Motors

Range: 0.5 - 25 Kgs

Application : Motor Drive Assy



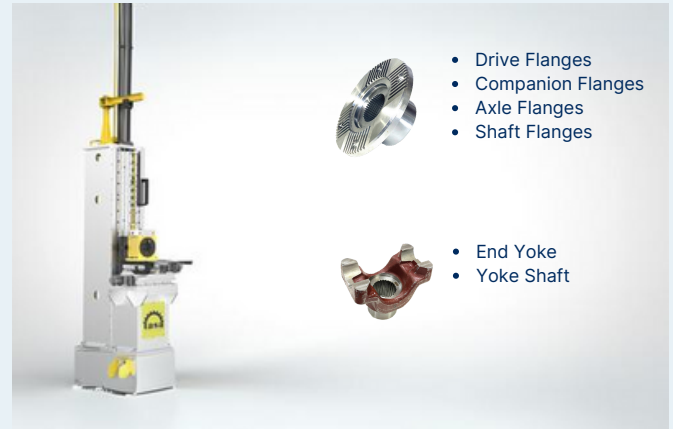
What we have?



CNC Turning Lathe

Make : LMW
Range : 3-600 mm

Total Machines : 15 Nos



Surface Broaching

Make : TASA Micro
Range : 16T & 1600 mm Stroke Length

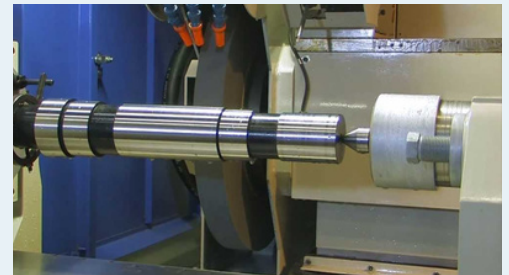
Total Machines : 1 No



CNC Gear Hobbing With Extended Hob Head

Make : Premier
Range : 0.5-6 Module

Total Machines : 1 No



Cylindrical Grinding CNC Machine

Make : Micromatic / HMT / Hi-life
Range : 5-450 mm

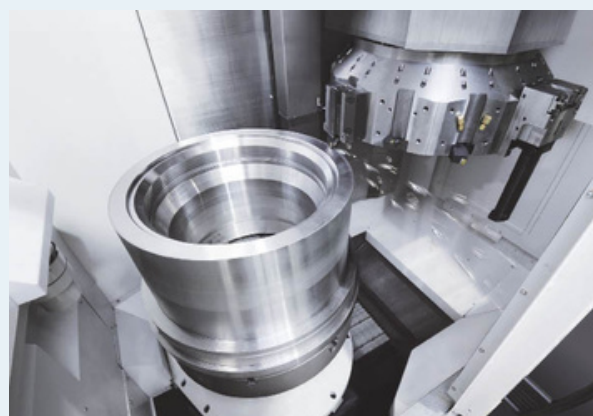
Total Machines : 10 Nos



Vertical Machining Center

Make : LMW / BFW / S&T
Range : 5-800 mm

Total Machines : 7 Nos



Vertical Turning Center

Make : LMW
Range : 200-1000 mm

Total Machines : 2 Nos

What we have?



Internal Broaching

Make : Schnell
Range : 12T & 1600 mm Stroke Length

Total Machines : 1 No



Centerless Grinding

Make : Cincinnati
Range : 5-100 mm

Total Machines : 1 No



Gang Milling

Make : Imported
Range : 600 mm

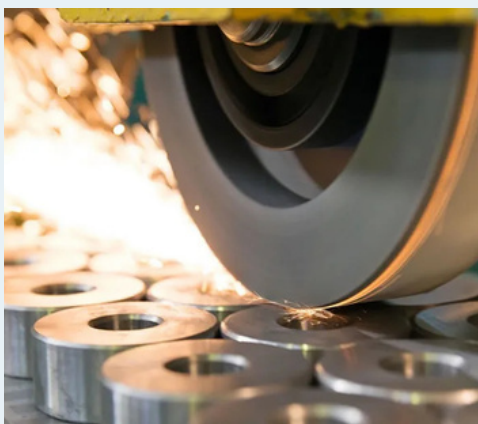
Total Machines : 1 No



Hydraulic Straightening Press

Make : Bemco / Schnell
Range : 12T - 40T mm

Total Machines : 4 Nos



Surface Grinding

Make : Imported
Range : 250 - 600 mm

Total Machines : 1 No



Plasma Cutting Machine

Make : Pro Arc
Range : 2500 - 6500 mm

Total Machines : 1 No

What we have?



Induction Hardening

Make : Heatrotherm
Range : 150 Kw

Total Machines : 1 No



Shot Peening

Make : Surfies Klentz
Range : 20 - 400 mm

Total Machines : 1 No



Gas Nitriding

Business Associates approved by OEM.

Total Vendors : 2 No



Case Carburizing & QT

Business Associates approved by OEM.

Total Vendors : 5 No



Tenifer QPQ salt Bath Nitriding

Business Associates approved by OEM.

Total Vendors : 2 No



Nylon 11 & Rilsan Coating

Business Associates approved by OEM.

Total Vendors : 2 Nos

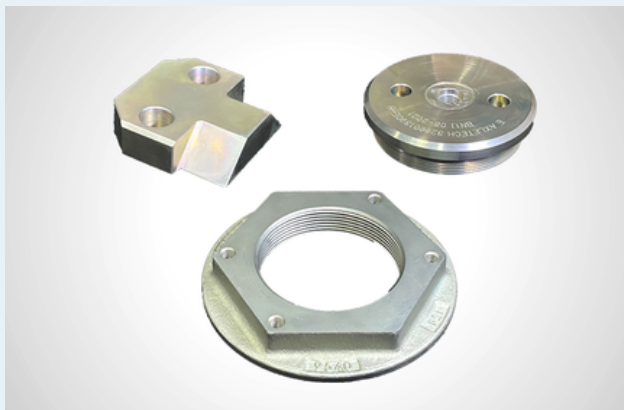
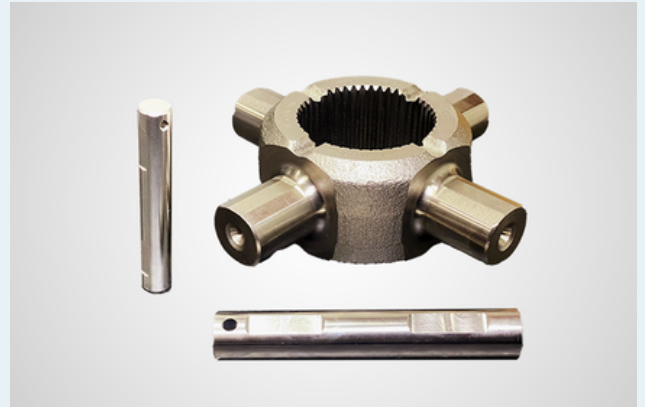
How We protect Our Parts?



Electroless Nickel Plating (ENP)

Total Plants : 1 No
Capacity : 2 Ton / Day

Total Feature : CQI 11 Certified



Zinc Plating

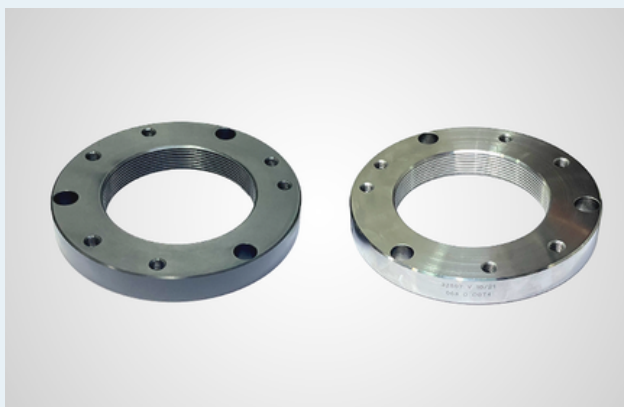
Total Plants : 1 No
Capacity : 3 Ton / Day

Total Feature : CQI 11 Certified

Tin Plating

Total Plants : 1 No
Capacity : 3 Ton / Day

Total Feature : CQI 11 Certified



Manganese Phosphating

Total Plants : 2 No
Capacity : 5 Ton / Day

Total Feature : CQI 11 Certified



How We Inspect Our Parts?



Coordinate Measuring Machine (CMM)



XRF



Eddy Current Material Sorter

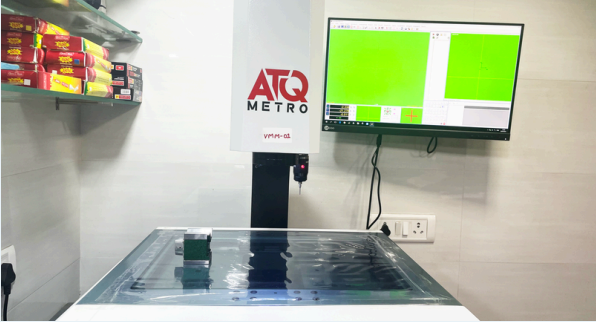


DFT Meter



Mitutoyo 2D Height Gauge

How We Inspect Our Parts?



Vision Measuring Machine (VMM)



Mitutoyo Surface Roughness Tester



Positive Material Identification (PMI)



Eddy Current Material Sorter



Trimos Height Gauge



Mitutoyo Height Gauge

Our Metallurgical LAB



Microscope

Make : Shanghai Optics
Capacity : 100X & 400X



Vickers Hardness Tester

Make : Shanghai Optics
Capacity : 0.05 HV



Universal Testing Machine (UTS)

Make : Fine
Capacity : 1000 kN



Rockwell Hardness Tester

Make : Fine
Capacity : 150 Kgs



Magnetic Particle Identification (MPI)

Make : Mayuresh Engineers
Capacity : 500x800 mm



Brinell Hardness Tester

Make : Fine
Capacity : 3000 Kgs



Abrasive Cutting Machine

Make : Sonicut
Capacity : 500 mm



Double Disc Polishing Machine

Make : Fine
Capacity : 200 mm

Our Key Strength

→ Customer Delight

→ Focused, experienced & Hardworking Young Team

→ Nitty-gritty of manufacturing processes

→ VAVE

→ Quality Oriented Processes

→ Quick decision making

→ Cost effective

→ Fastrack exponential growth

→ Inline with Global Standard

→ Upgraded with new generation technologies

Our Clientele

International - Export



Indian - Domestic



ASHOK LEYLAND



BHARAT GEARS LIMITED
Geared for Life

BHARAT FORGE

DAIMLER



KALYANI

Where Our Parts Reach?



Export Countries



• Germany



• USA



• UK



• France



• Mexico



• Türkiye

Our People Strength



Thane Team

Teamwork is the secret that makes common people achieve uncommon results and this is what, we have in our Thane facility around thirty five personals with variety of expertise.

Bhiwandi Team



We are really glad that we are having the team which having the members who are capable to mange the work mutually as they have the experience in precision machining & production .



GET IN TOUCH



Connect Us

Head Office:

Unit No. 6,7 & 30, Om Anand Industrial Estate, Raghunath Nagar, Thane West, Mumbai, India - 400 604



+91-9619394412 | +91-9820115959



connect@fourstarindustries.com



www.fourstarindustries.com

Nearest Connectivity



Mumbai International Airport

22.0 Kms



Thane Railway Station

3.0 Kms



JNPT Sea Port Terminal

48.0 Kms

