



BETTER PRODUCTS FOR
A BETTER ENVIRONMENT...





07-09 » »

MERCEDES

12-15 » »

MAN

16-19 » »

SCANIA

22-25 » »

VOLVO

28-33 » »

DAF

36-37 » »

IVECO

38-39 » »

HYDRAULIC TANK

www.vakardepo.com.tr



CONTENTS



HAKKIMIZDA

1982 yılında çelik konstrüksiyon ve yapı imalatı üzerine kurulan Vakar Konstrüksiyon, alanında profesyonelleşme adına kısa sürede aranılan bir marka haline gelmiştir.

1998 yılında galvaniz akaryakıt deposu üretimini ürün gamına ekleyen Vakar Konstrüksiyon akaryakıt deposu üretiminde Türkiye'nin sayılı firmaları arasına girmiştir.

2010 yılından itibaren VAKAR DEPO adıyla faaliyetlerine devam etmektedir.

Çağımızın getirdiklerine ayak uydurarak alüminyum akar yakıt deposunu da üretim parkuruna ekleyen firmamız, bu alanda yapılan yatırımlarla sadece yerel tedarikçi olmanın ötesine gitmiş, Avrupa ve Ortadoğu pazarlarına ürünlerini ihraç etmeye başlamıştır.

VAKAR DEPO hızla müşteri ihtiyaçlarının doğru analizi ile yapılan doğru yatırımlarla büyüdü ve 2016 yılında 2000 m2 kapalı alana sahip üretim sahasında hizmet vermeye başladı. Şirket o tarihten itibaren Ar-Ge yatırımlarına hız verdi. Bu yatırımlar sonucunda, VAKAR DEPO sadece Türkiye'de değil, aynı zamanda Avrupa ve Ortadoğu bölgesinde kendi alanının en önemli şirketlerinden biri olmayı hedeflerken; kendi makine parkurunu ve ürün çeşitliliğini genişletmiştir. 2020 yılı sonunda artan üretim adetlerine daha hızlı reaksiyon gösterebilmek adına üretim alanımızı 3500m2 olan yeni fabrikamıza taşıdık.

VAKAR DEPO 2018 yılında kalite hedefleri ile birlikte teknoloji yatırımlarına hız vererek Avrupa'da ve yerli OEM firmalarımız içinde aranan tedarikçi olma yolunda çalışmalarına hız vermiştir.

VAKAR DEPO nun ürün gamında Alüminyum, alüminyum kaplı, çelik, galvaniz yakıt tankları & hidrolik tanklar ve bağlantı elemanları başlıca ürün grubunu oluşturmaktadır. Bu ürünler orijinal tanklar ile aynı olup ayrıca özel dizayn üretimlerimizde mevcuttur.

Kalite alanında da ISO 9001, ECE R 34 belgemizin yanına, Eylül 2022 ye kadar TS 16949, ISO 14001, ISO 45001 sertifikalarını almayı planladık. Bu doğrultuda çalışmalarımız devam etmektedir.

VAKAR DEPO üretimi olan yakıt tankının seçilmesi, her zaman için iyi kalitede bir ürün, kalitesine güvenilen bir malzemeden üretilmiş kaliteli işçilikli bir ürün sunar.

Alüminyum tanklarımız, otomotiv endüstrisinde en yüksek güç ve dayanıklılık testlerini geçen AlMg3 alüminyum malzemeden üretilmektedir.

Fabrikamızdan çıkan tüm tanklar AT70/221 normuna göre 0,3 bar basınç da %100 sızdırmazlık testinden geçirilerek sizlere sunulmaktadır.

Tankın tüm bağlantıları uygun özellikte üretilmekte olup depo ile tam bir uyum sağlamaktadır.



OUR STORY

Vakar Construction, which was founded on steel and building construction in 1982, has grown to become a brand well-known for professionalism in its field in a short time.

In 1998, Vakar Construction added galvanized fuel tanks to its product range, and became one of a small number of firms of Turkey in the production of fuel tank.

Since 2010, it has continued its activities under the name VAKAR DEPO. By leveraging our longstanding industry experience, our company has gone beyond being just a local supplier, and made investments to begin exporting its products to European and Middle Eastern markets.

VAKAR DEPO has grown rapidly with investments based on analysis of customer needs. Beginning with a closed production site of 2000 m² in 2016, our company has accelerated research and development activities.

With these investments, VAKAR DEPO aimed to be one of the most important companies in Turkey as well as Europe and the Middle East, and expanded its machinery and product range.

At the end of 2020, we moved our production area to our new factory of 3500 m², in order to efficiently handle increasing production numbers.

VAKAR DEPO has accelerated technology investments along with quality targets in 2018 and has increased its efforts to become a sought-after supplier in Europe and for our local OEM companies.

The product range of VAKAR DEPO includes aluminum, coated aluminum, steel, and galvanized fuel tanks, hydraulic tanks and fasteners as well as other product groups. These products are the same design as the original tanks, but are also available in special design productions.

In the field of quality, in addition to our ISO 9001, ECE R 34 certificates, we are planning to obtain TS 16949, ISO 14001, ISO 45001 certificates by September 2022.

Our work is continuing in this direction.

A fuel tank from VAKAR DEPO is always a good and reliable product, made with high-quality workmanship and premium materials.

Our aluminum tanks are made of AlMg3 aluminum material, which passes the highest power and durability tests in the automotive industry.

All tanks coming out of our factory are tested by 100% sealing pressure of 0.3 bar according to the AT70/221 standard. All connections to the tank are produced in the appropriate quality and are fully compatible with the tank.



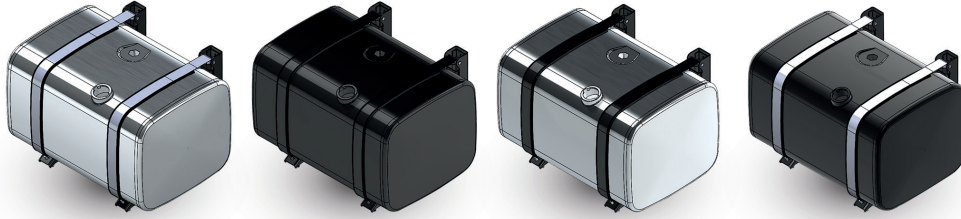
**BETTER PRODUCTS
FOR A BETTER
ENVIRONMENT**

2.5 mm EN 1024 / 3.1
ALUMINIUMminium is used
2.5 mm from the breakwater
body material is done
Welding robots are
produced.
Sealing and pressure
testing is done

1.5 mm-2 mm st 1303 DIN 1623
Steel material is wed 1,5/2.5 mm
boffe is made of body material.
Welding robots are
produced.
Leakage and pressure
testing is done



»



560 X 640 mm Aluminium

CODE	MODEL	LENGTH	MATERIAL	VOLUME (liter) Lt	OEM
VD01.1029	560X640	450	ALUMINIUM	150	
VD01.1027	560X640	620	ALUMINIUM	200	405 470 0201
VD01.1028	560X640	780	ALUMINIUM	250	405 470 0301
VD01.1002	560X640	945	ALUMINIUM	300	942 470 0201
VD01.1003	560X640	1250	ALUMINIUM	400	942 470 0401
VD01.1005	560X640	1550	ALUMINIUM	500	942 470 0501
VD01.1004	560X640	1850	ALUMINIUM	590	942 470 0601
VD01.1026	560X640	1890	ALUMINIUM	600	943 470 0501
VD01.1030	560X640	2200	ALUMINIUM	700	

560 X 640 mm Steel

CODE	MODEL	LENGTH	MATERIAL	VOLUME (liter) Lt	OEM
VD01.2029	560X640	450	STEEL	150	
VD01.2027	560X640	620	STEEL	200	942 470 0501
VD01.2028	560X640	780	STEEL	250	942 470 0201
VD01.2002	560X640	945	STEEL	300	942 470 0401
VD01.2003	560X640	1250	STEEL	400	942 470 0501
VD01.2005	560X640	1550	STEEL	500	942 470 0501

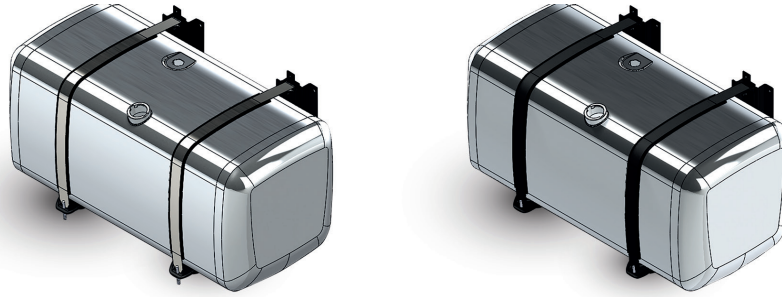


Mercedes-Benz





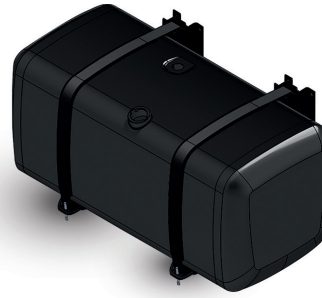
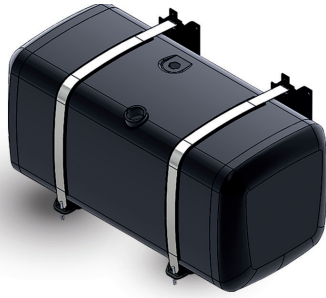
2.5 mm EN 1024 / 3.1 ALUMINIUM minimum is used 2.5 mm from the breakwater body material is done Welding robots are produced. Sealing and pressure testing is done



700 X 700 mm Aluminium

CODE	BRAND	MODEL	LENGTH	MATERIAL	VOLUME (liter)	OEM
VD01.1025	MERCEDES	700x700	500	ALUMINIUM	190	
VD01.1031	MERCEDES	700x700	620	ALUMINIUM	280	942.470 1601
VD01.1012	MERCEDES	700x700	770	ALUMINIUM	300	942.470 1001
VD01.1007	MERCEDES	700x700	910	ALUMINIUM	400	375 470 3101/1801
VD01.1010	MERCEDES	700x700	1040	ALUMINIUM	450	930 470 0601 942 470 1301
VD01.1018	MERCEDES	700x700	1070	ALUMINIUM	460	934 470 0201
VD01.1013	MERCEDES	700x700	1210	ALUMINIUM	500	930 470 0501
VD01.1011	MERCEDES	700x700	1275	ALUMINIUM	550	942 470 1401 934 470 0301
VD01.1006	MERCEDES	700x700	1500	ALUMINIUM	650	375 470 2601 934 470 0401 942 470 0901
VD01.1006	MERCEDES	700x700	1660	ALUMINIUM	700	
VD01.1015	MERCEDES	700x700	1700	ALUMINIUM	750	
VD01.1024	MERCEDES	700x700	1750	ALUMINIUM	760	
VD01.1015	MERCEDES	700x700	1700	ALUMINIUM	780	930 470 0701
VD01.1021	MERCEDES	700x700	2040	ALUMINIUM	900	
VD01.1023	MERCEDES	700x700	2250	ALUMINIUM	980	934 470 1101

1.5 mm-2 mm st 1303 DIN
1623 Steel material is welded
1,5/2.5 mm boffle is made
of body material. Welding
robots are produced.
Leakage and pressure
testing is done



700 X 700 mm Steel

CODE	BRAND	MODEL	LENGTH	MATERIAL	VOLUME (liter)	OEM
VD01.2006	MERCEDES	700x700	500	STEEL	190	
VD01.2012	MERCEDES	700x700	770	STEEL	300	
VD01.2007	MERCEDES	700x700	910	STEEL	400	
VD01.2010	MERCEDES	700x700	1040	STEEL	450	
VD01.2018	MERCEDES	700x700	1070	STEEL	460	
VD01.2013	MERCEDES	700x700	1210	STEEL	500	
VD01.2011	MERCEDES	700x700	1280	STEEL	550	
VD01.2006	MERCEDES	700x700	1500	STEEL	650	



Mercedes-Benz

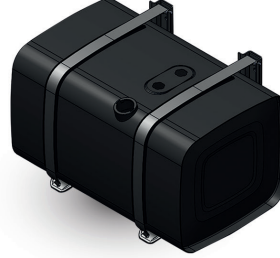


BETTER PRODUCTS
FOR A BETTER
ENVIRONMENT...





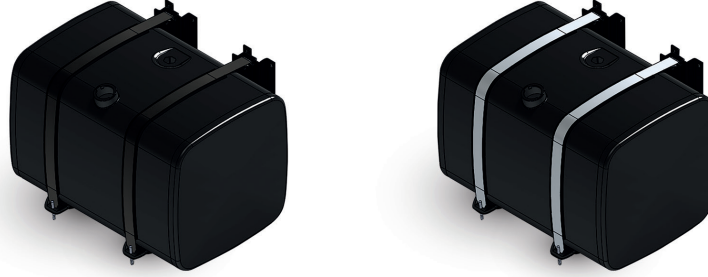
2.5 mm EN 1024 / 3.1 ALUMINIUMminium is used 2.5 mm from the breakwater body material is done Welding robots are produced. Sealing and pressure testing is done



620 X 675 mm Aluminium

CODE	BRAND	MODEL	MATERIAL	LENGTH	VOLUME (liter)	OEM
VD02.1023	MAN	620x680	ALUMINIUM	540	200	
VD02.1001	MAN	620x680	ALUMINIUM	700	250	81.12201.5653
VD02.1002	MAN	620x680	ALUMINIUM	800	300	81.12201.5531/5469
VD02.1022	MAN	620x680	ALUMINIUM	1070	400	81.12201.5690/5498/5537
VD02.1004	MAN	620x680	ALUMINIUM	1350	500	81.12201.5482/5653/5469
VD02.1005	MAN	620x680	ALUMINIUM	1600	600	81.12201.5664/5686/5500
VD02.1006	MAN	620x680	ALUMINIUM	1850	700	81.12201.5673/5555
VD02.1007	MAN	620x680	ALUMINIUM	2000	750	81.12201.5523/2090
VD02.1024	MAN	620x680	ALUMINIUM	2140	800	81.12201.5674/6032/5687
VD02.1025	MAN	620x680	ALUMINIUM	2280	850	81.12201.5671

1.5 mm-2 mm st 1303 DIN 1623
Steel material is used, 1,5/2.5
mm baffle is made of body
material. Welding robots are
produced.
Leakage and pressure
testing is done



350 X 620 mm Steel

CODE	BRAND	MODEL	LENGTH	MATERIAL	VOLUME (liter)	OEM
VD02.3011	MAN	350X620	800	STEEL	150	81.12201.5858/6176
VD02.3010	MAN	350X620	1050	STEEL	200	81.12201.5819/6206

515 X 615 mm Steel

CODE	BRAND	MODEL	LENGTH	MATERIAL	VOLUME (liter)	OEM
VD02.3052	MAN	515x615	80	STEEL	230	81.12201.6123
VD02.3047	MAN	515x615	105	STEEL	300	81.12201.5552/6129/6313
VD02.3053	MAN	515x615	105	STEEL	300	81.12201.5552/6584

620 X 675 mm Steel

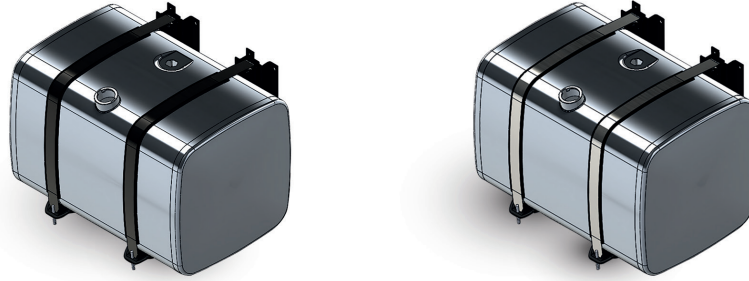
CODE	BRAND	MODEL	MATERIAL	LENGTH	VOLUME (liter)	OEM
VD02.2023	MAN	620x675	STEEL	540	200	
VD02.2001	MAN	620x675	STEEL	700	250	81.12201.5653
VD02.2002	MAN	620x675	STEEL	800	300	81.12201.6111/83.12201.5533
VD02.3046	MAN	620x675	STEEL	105	400	81.12201.5537/0527/0530
VD02.2022	MAN	620x675	STEEL	1070	400	83.12201.5531/5541
VD02.2004	MAN	620x675	STEEL	1350	500	81.12201.5469
VD02.2004	MAN	620x675	STEEL	1600	600	81.12201.5664



MAN



2.5 mm EN 1024 / 3.1 ALUMINIUM is used
2.5 mm from the breakwater body material is done
Welding robots are produced.
Sealing and pressure testing is done



700 X 700 mm Aluminium

CODE	BRAND	MODEL	MATERIAL	LENGTH	VOLUME (liter)	OEM
VD02.1032	MAN	700x700	ALUMINIUM	460	200	
VD02.1031	MAN	700x700	ALUMINIUM	680	300	81.12201.5715
VD02.1033	MAN	700x700	ALUMINIUM	910	400	
VD02.1034	MAN	700x700	ALUMINIUM	1060	450	81.12201.5658
VD02.1035	MAN	700x700	ALUMINIUM	1140	500	81.12201.1097
VD02.1036	MAN	700x700	ALUMINIUM	1180	520	
VD02.1037	MAN	700x700	ALUMINIUM	1360	580	
VD02.1046	MAN	700x700	ALUMINIUM	1365	600	81.12201.5664
VD02.1048	MAN	700x700	ALUMINIUM	1510	660	
VD02.1039	MAN	700x700	ALUMINIUM	1610	700	
VD02.1040	MAN	700x700	ALUMINIUM	1700	750	
VD02.1041	MAN	700x700	ALUMINIUM	1800	800	
VD02.1042	MAN	700x700	ALUMINIUM	1860	820	
VD02.1043	MAN	700x700	ALUMINIUM	1990	875	
VD02.1047	MAN	700x700	ALUMINIUM	2060	900	81.12201.5707
VD02.1044	MAN	700x700	ALUMINIUM	2150	950	81.12201.5706
VD02.1045	MAN	700x700	ALUMINIUM	2250	990	

1.5 mm-2 mm st 1303 DIN
1623 Steel material is welded
1,5/2.5 mm boffle is made of
body material. Welding
robots are produced.
Leakage and pressure
testing is done



700 X 700 mm Steel

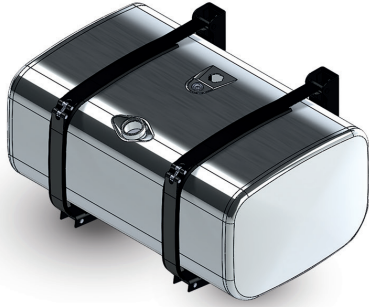
CODE	BRAND	MODEL	MATERIAL	LENGTH	VOLUME (liter)	OEM
VD02.2031	MAN	700x700	STEEL	680	300	
VD02.2032	MAN	700x700	STEEL	460	200	
VD02.2033	MAN	700x700	STEEL	910	350	
VD02.2034	MAN	700x700	STEEL	1060	400	
VD02.2035	MAN	700x700	STEEL	1140	430	
VD02.2036	MAN	700x700	STEEL	1180	550	
VD02.2037	MAN	700x700	STEEL	1360	560	
VD02.2046	MAN	700x700	STEEL	1365	600	
VD02.2048	MAN	700x700	STEEL	1510	660	
VD02.2039	MAN	700x700	STEEL	1610	700	



MAN



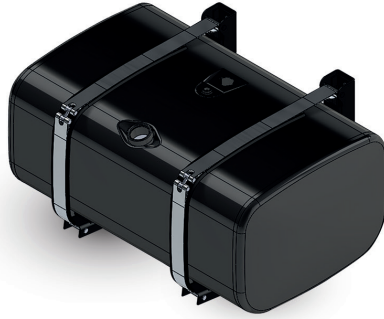
2.5 mm EN 1024 / 3.1 ALUMINIUM is used
2.5 mm from the breakwater body material is done
Welding robots are produced.
Sealing and pressure testing is done



670X 700 mm Aluminium

CODE	BRAND	MODEL	MATERIAL	LENGTH	VOLUME (liter)	OEM
VD03.1028	SCANIA	670x700	ALUMINIUM	390	145	1517311
VD03.1002	SCANIA	670x700	ALUMINIUM	505	195	1517303/1757774
VD03.1003	SCANIA	670x700	ALUMINIUM	630	250	1863088
VD03.1004	SCANIA	670x700	ALUMINIUM	735	295	1517304/1871188
VD03.1005	SCANIA	670x700	ALUMINIUM	865	345	1517305/1871189
VD03.1029	SCANIA	670x700	ALUMINIUM	910	385	1377343
VD03.1030	SCANIA	670x700	ALUMINIUM	930	395	1377344
VD03.1006	SCANIA	670x700	ALUMINIUM	1015	400	1430731/1544778/1878319
VD03.1017	SCANIA	670x700	ALUMINIUM	1090	425	1918526
VD03.1007	SCANIA	670x700	ALUMINIUM	1190	465	1517306/1918526
VD03.1014	SCANIA	670x700	ALUMINIUM	1265	495	1517307/1871190/1423689
VD03.1027	SCANIA	670x700	ALUMINIUM	1330	555	1377345/1918527/1369744
VD03.1009	SCANIA	670x700	ALUMINIUM	1400	570	1918527/1369744
VD03.1010	SCANIA	670x700	ALUMINIUM	1515	595	1517308/1871191/1423690
VD03.1011	SCANIA	670x700	ALUMINIUM	1550	610	
VD03.1023	SCANIA	670x700	ALUMINIUM	1614	645	1430732
VD03.1012	SCANIA	670x700	ALUMINIUM	1665	695	1971192/1517309/1423691
VD03.1013	SCANIA	670x700	ALUMINIUM	1900	770	1377344

1.5 mm-2 mm st 1303 DIN
1623 Steel material is welded
1,5/2.5 mm boffle is made
of body material. Welding robots
are produced.
Leakage and pressure
testing is done



670X 700 Steel

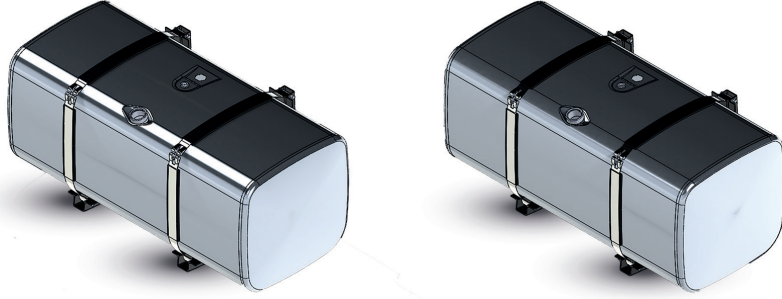
CODE	BRAND	MODEL	MATERIAL	LENGTH	VOLUME (liter)	OEM
VD03.2028	SCANIA	670x700	STEEL	390	145	
VD03.2002	SCANIA	670x700	STEEL	505	195	
VD03.2003	SCANIA	670x700	STEEL	630	250	
VD03.2004	SCANIA	670x700	STEEL	735	295	
VD03.2005	SCANIA	670x700	STEEL	865	345	
VD03.2029	SCANIA	670x700	STEEL	910	385	
VD03.2030	SCANIA	670x700	STEEL	930	395	1544778
VD03.2006	SCANIA	670x700	STEEL	1015	400	
VD03.2017	SCANIA	670x700	STEEL	1090	425	
VD03.2007	SCANIA	670x700	STEEL	1190	465	
VD03.2014	SCANIA	670x700	STEEL	1265	495	
VD03.2027	SCANIA	670x700	STEEL	1330	555	
VD03.2009	SCANIA	670x700	STEEL	1400	570	1918527
VD03.2010	SCANIA	670x700	STEEL	1515	595	
VD03.2011	SCANIA	670x700	STEEL	1550	610	
VD03.2023	SCANIA	670x700	STEEL	1614	645	



SCANIA



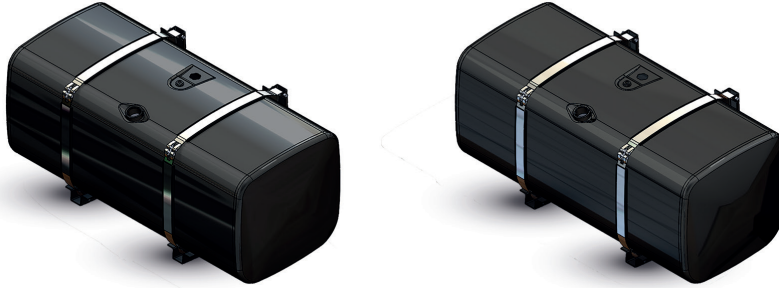
2.5 mm EN 1024 / 3.1 ALUMINIUM is used 2.5 mm from the breakwater body material is done Welding robots are produced. Sealing and pressure testing is done



510X 710 mm Aluminium

CODE	BRAND	MODEL	MATERIAL	LENGTH	VOLUME (liter)	OEM
VD03.1024	SCANIA	510x710	ALUMINIUM	505	145	1424269
VD03.1025	SCANIA	510x710	ALUMINIUM	720	195	1424270
VD03.1021	SCANIA	510x710	ALUMINIUM	820	245	2167504
VD03.1026	SCANIA	510x710	ALUMINIUM	1040	295	1424271
VD03.1022	SCANIA	510x710	ALUMINIUM	1150	350	
VD03.1019	SCANIA	510x710	ALUMINIUM	1310	400	
VD03.1016	SCANIA	510x710	ALUMINIUM	1515	445	1424272

1.5 mm-2 mm st 1303 DIN
1623 Steel material is used
1,5/2.5 mm baffle is made
of body material. Welding ro-
bots are produced.
Leakage and pressure
testing is done



510X 710 mm Steel

CODE	BRAND	MODEL	MATERIAL	LENGTH	VOLUME (liter)	OEM
VD03.2016	SCANIA	510x710	STEEL	1515	445	1424272
VD03.2019	SCANIA	510x710	STEEL	1310	400	
VD03.2024	SCANIA	510x710	STEEL	505	145	1424269
VD03.2025	SCANIA	510x710	STEEL	735	195	1424270
VD03.2021	SCANIA	510x710	STEEL	820	245	2167504
VD03.2026	SCANIA	510x710	STEEL	1040	295	1424271
VD03.2022	SCANIA	510x710	STEEL	1150	350	



SCANIA

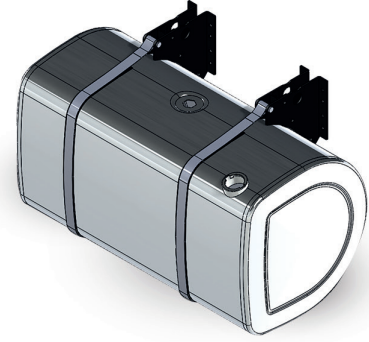
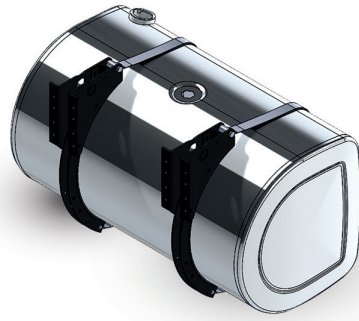


VAKARDEPO
1982





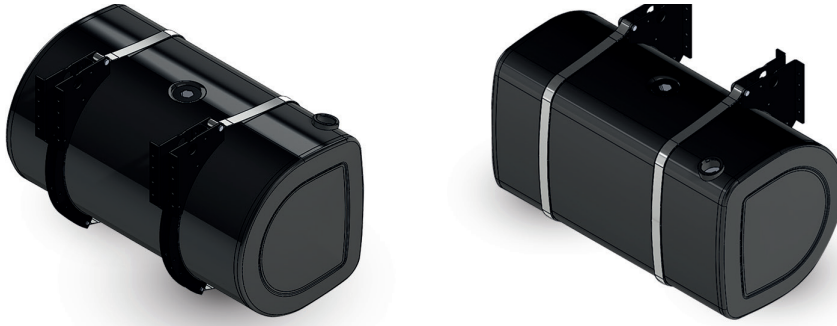
2.5 mm EN 1024 / 3.1 ALUMINIUM is used
2.5 mm from the breakwater body material is done
Welding robots are produced.
Sealing and pressure testing is done



690X 710 mm Aluminium

CODE	BRAND	MODEL	MATERIAL	LENGTH	VOLUME (liter)	OEM
VD04.1001	VOLVO RVI	690x710	ALUMINIUM	430	165	20503502
VD04.1002	VOLVO RVI	690x710	ALUMINIUM	530	205	20503503
VD04.1004	VOLVO RVI	690x710	ALUMINIUM	580	240	21516442
VD04.1003	VOLVO RVI	690x710	ALUMINIUM	715	280	24425785
VD04.1005	VOLVO RVI	690x710	ALUMINIUM	830	325	20503504
VD04.1006	VOLVO RVI	690x710	ALUMINIUM	930	360	20507744
VD04.1007	VOLVO RVI	690x710	ALUMINIUM	1030	400	20503505
VD04.1008	VOLVO RVI	690x710	ALUMINIUM	1130	445	20503506
VD04.1009	VOLVO RVI	690x710	ALUMINIUM	1230	485	20503507
VD04.1011	VOLVO RVI	690x710	ALUMINIUM	1330	530	20503508
VD04.1012	VOLVO RVI	690x710	ALUMINIUM	1430	565	20503509
VD04.1013	VOLVO RVI	690x710	ALUMINIUM	1530	605	20503510
VD04.1014	VOLVO RVI	690x710	ALUMINIUM	1630	645	20503511
VD04.1015	VOLVO RVI	690x710	ALUMINIUM	1730	685	20503514
VD04.1030	VOLVO RVI	690x710	ALUMINIUM	1800	710	20507578
VD04.1016	VOLVO RVI	690x710	ALUMINIUM	1830	725	20503516
VD04.1017	VOLVO RVI	690x710	ALUMINIUM	2030	805	20503517

1.5 mm-2 mm st 1303 DIN
1623 Steel material is welded
1,5/2.5 mm boffle is made of
body material. Welding
robots are produced.
Leakage and pressure
testing is done



690X 710 mm Steel

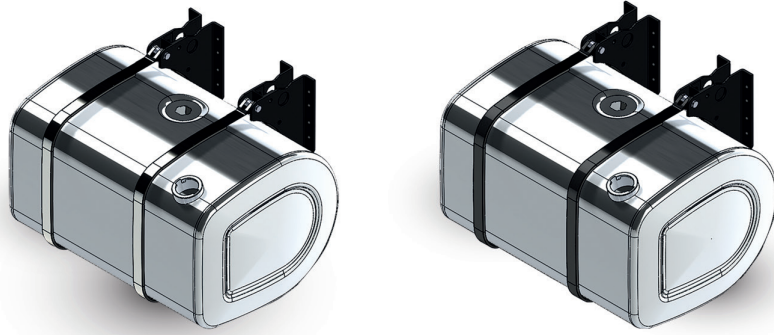
CODE	BRAND	MODEL	MATERIAL	LENGTH	VOLUME (liter)	OEM
VD04.2001	VOLVO RVI	690x710	ALUMINIUM	430	165	20503502/20442190/21516440
VD04.2002	VOLVO RVI	690x710	ALUMINIUM	530	205	20503503/21516443/20442191
VD04.2003	VOLVO RVI	690x710	ALUMINIUM	715	280	24425785/21516444
VD04.2004	VOLVO RVI	690x710	ALUMINIUM	580	240	21516442
VD04.2005	VOLVO RVI	690x710	ALUMINIUM	830	325	20503504/21968574/20442192/21305131
VD04.2006	VOLVO RVI	690x710	ALUMINIUM	930	360	20507744/21516446/7420507931
VD04.2007	VOLVO RVI	690x710	ALUMINIUM	1030	400	20503505/20367137/21516447
VD04.2008	VOLVO RVI	690x710	ALUMINIUM	1130	445	20503506/21516448/20424027
VD04.2009	VOLVO RVI	690x710	ALUMINIUM	1230	485	20503507/20367138/21516449
VD04.2011	VOLVO RVI	690x710	ALUMINIUM	1330	530	20503508/21516451/20367140
VD04.2012	VOLVO RVI	690x710	ALUMINIUM	1430	565	20503509/21516477/20367141
VD04.2013	VOLVO RVI	690x710	ALUMINIUM	1530	605	20503510/21516454/20367142



VOLVO



2.5 mm EN 1024 / 3.1 ALUMINIUM is used
2.5 mm from the breakwater body material is done
Welding robots are produced.
Sealing and pressure testing is done



560X 670 mm Aluminium

CODE	BRAND	MODEL	MATERIAL	LENGTH	VOLUME (liter)	OEM
VD04.1021	VOLVO RVI	560x670	ALUMINIUM	530	155	20504483
VD04.1022	VOLVO RVI	560x670	ALUMINIUM	830	250	20504486
VD04.1020	VOLVO RVI	560x670	ALUMINIUM	1030	310	20504488
VD04.1023	VOLVO RVI	560x670	ALUMINIUM	1230	375	20504489
VD04.1019	VOLVO RVI	560x670	ALUMINIUM	1330	410	20504491
VD04.1024	VOLVO RVI	560x670	ALUMINIUM	1430	450	20504492
VD04.1025	VOLVO RVI	560x670	ALUMINIUM	1630	500	20504493
VD04.1026	VOLVO RVI	560x670	ALUMINIUM	1730	535	20504494
VD04.1028	VOLVO RVI	560x670	ALUMINIUM	1850	570	
VD04.1029	VOLVO RVI	560x670	ALUMINIUM	1950	600	20504494
VD04.1027	VOLVO RVI	560x670	ALUMINIUM	2030	625	20504495

1.5 mm-2 mm st 1303 DIN
1623 Steel material is welded
1,5/2.5 mm baffle is made
of body material. Welding robots
are produced.
Leakage and pressure
testing is done



560X 670 mm Steel

CODE	BRAND	MODEL	MATERIAL	LENGTH	VOLUME (liter)	OEM
VD04.2019	VOLVO RVI	560x670	STEEL	530	155	20504483
VD04.2021	VOLVO RVI	560x670	STEEL	830	250	20504486
VD04.2022	VOLVO RVI	560x670	STEEL	1030	310	20504488
VD04.2020	VOLVO RVI	560x670	STEEL	1230	375	20504489
VD04.2023	VOLVO RVI	560x670	STEEL	1330	410	20504491
VD04.2024	VOLVO RVI	560x670	STEEL	1430	450	20504492



VOLVO



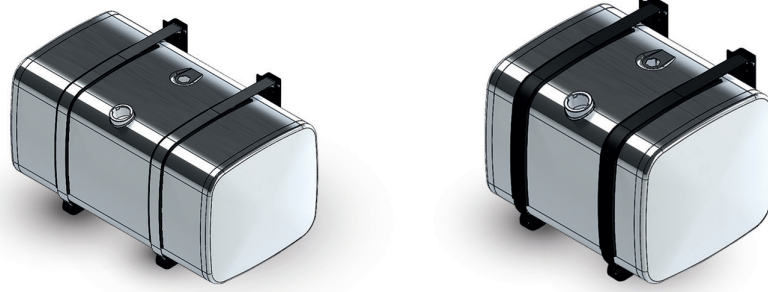


**BETTER PRODUCTS
FOR A BETTER
ENVIRONMENT..**





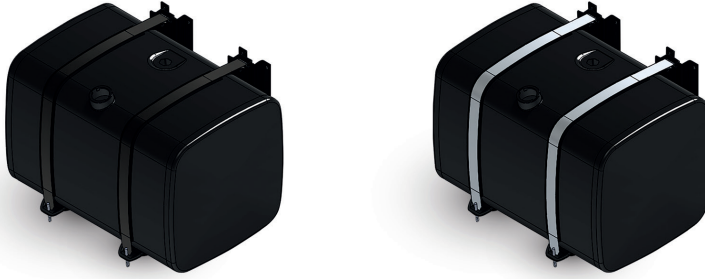
2.5 mm EN 1024 / 3.1 ALUMINIUMminium is used
2.5 mm from the breakwater body material is done
Welding robots are produced.
Sealing and pressure testing is done



620X 680 mm Aluminium

CODE	BRAND	MODEL	MATERIAL	LENGTH	VOLUME (liter)	OEM
VD05.1001	DAF	62x68	ALUMINIUM	600	200	1797436
VD05.1002	DAF	62x68	ALUMINIUM	860	300	1797438
VD05.1003	DAF	62x68	ALUMINIUM	990	350	1681816
VD05.1004	DAF	62x68	ALUMINIUM	1170	430	1378084/1681824
VD05.1005	DAF	62x68	ALUMINIUM	1250	450	
VD05.1006	DAF	62x68	ALUMINIUM	1400	500	
VD05.1007	DAF	62x68	ALUMINIUM	1470	545	1681825
VD05.1018	DAF	62x68	ALUMINIUM	1570	590	2132365
VD05.1008	DAF	62x68	ALUMINIUM	1650	600	1681821
VD05.1010	DAF	62x68	ALUMINIUM	1725	630	1681826
VD05.1011	DAF	62x68	ALUMINIUM	1790	650	
VD05.1012	DAF	62x68	ALUMINIUM	1910	700	
VD05.1017	DAF	62x68	ALUMINIUM	2015	750	1673119/1673149
VD05.1014	DAF	62x68	ALUMINIUM	2160	820	
VD05.1015	DAF	62x68	ALUMINIUM	2279	870	1673120
VD05.1016	DAF	62x68	ALUMINIUM	2330	995	1378078

1.5 mm-2 mm st 1303 DIN
1623 Steel material is welded
1,5/2.5 mm boffle is made
of body material. Welding robots
are used. Leakage and pressure
testing is done



620X 680 mm Steel

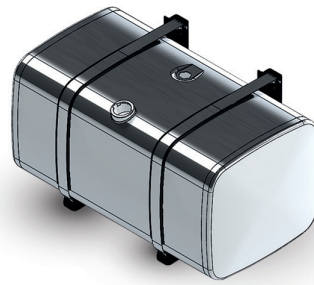
CODE	BRAND	MODEL	MATERIAL	LENGTH	VOLUME (liter)	OEM
VD05.2001	DAF	62X68	STEEL	600	200	
VD05.2002	DAF	62X68	STEEL	860	300	41297840
VD05.2003	DAF	62X68	STEEL	990	350	
VD05.2004	DAF	62X68	STEEL	1170	430	
VD05.2005	DAF	62X68	STEEL	1250	450	
VD05.2006	DAF	62X68	STEEL	1400	500	
VD05.2007	DAF	62X68	STEEL	1470	545	



DAF



2.5 mm EN 1024 / 3.1 ALUMINIUM is used
2.5 mm from the breakwater body material is done
Welding robots are produced.
Sealing and pressure testing is done



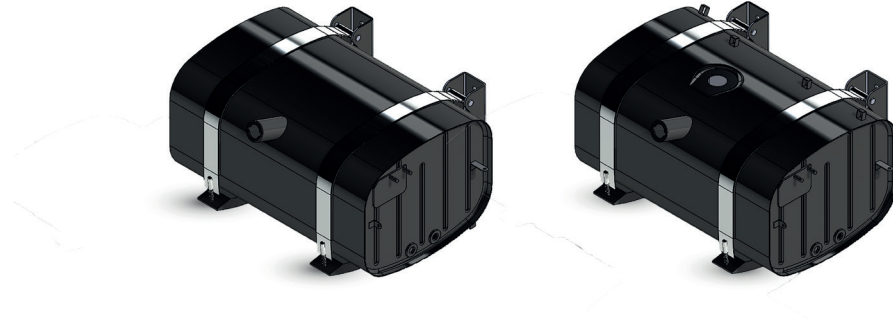
590X 680 mm Aluminium

CODE	BRAND	MODEL	MATERIAL	LENGTH	VOLUME (liter)	OEM
VD05.1031	DAF	590X680	ALUMINIUM	430	1180	
VD05.1032	DAF	590X680	ALUMINIUM	530	900	
VD05.1033	DAF	590X680	ALUMINIUM	715	600	
VD05.1034	DAF	590X680	ALUMINIUM	580	1525	
VD05.1035	DAF	590X680	ALUMINIUM	830	1610	

590X 680 mm Steel

VD05.2031	DAF	590X680	STEEL	430	1180	
VD05.2032	DAF	590X680	STEEL	530	900	
VD05.2033	DAF	590X680	STEEL	715	600	
VD05.2034	DAF	590X680	STEEL	580	1525	
VD05.2035	DAF	590X680	STEEL	830	1610	

1.5 mm-2 mm st 1303 DIN
1623 Steel material is used
1,5/2.5 mm boffle is made
of body material. Welding ro-
bots are produced.
Leakage and pressure
testing is done



380X 490 mm Aluminium

CODE	BRAND	MODEL	MATERIAL	LENGTH	VOLUME (liter)	OEM
VD05.3028	DAF	38X49	STEEL	750	123	1403464
VD05.3029	DAF	38X49	STEEL	750	123	1409757
VD05.3033	DAF	38X49	STEEL	750	123	
VD05.3036	DAF	38X49	STEEL	750	123	1702981
VD05.3032	DAF	38X49	STEEL	1040	168	1403465
VD05.3037	DAF	38X49	STEEL	1040	168	1409419
VD05.3040	DAF	38X49	STEEL	1250	200	

490X 640 mm Steel

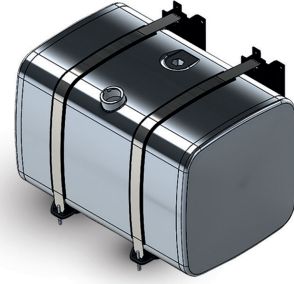
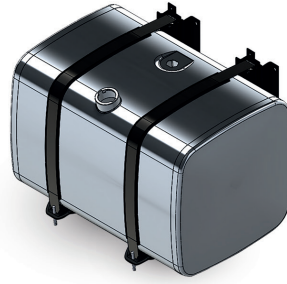
VD05.3039	DAF	49X64	STEEL	580	150	1702979
VD05.3030	DAF	49X64	STEEL	750	200	1409802/1403461
VD05.3031	DAF	49X64	STEEL	750	200	1403466
VD05.3034	DAF	49X64	STEEL	1160	325	1409759
VD05.3035	DAF	49X64	STEEL	1160	325	1403475/1403509



DAF



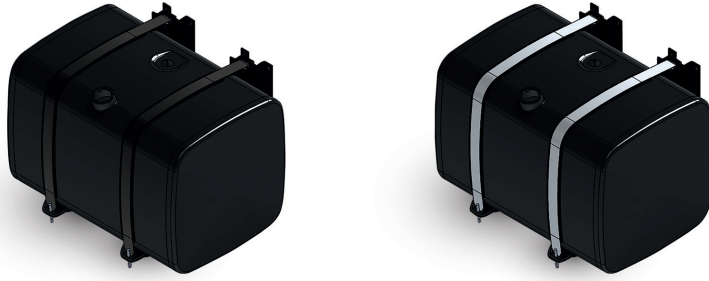
2.5 mm EN 1024 / 3.1 ALUMINIUM is used
2.5 mm from the breakwater body material is done
Welding robots are produced.
Sealing and pressure testing is done



700X 700 mm Aluminium

CODE	BRAND	MODEL	MATERIAL	LENGTH	VOLUME (liter)	OEM
VD05.1020	DAF	700x700	ALUMINIUM	460	200	
VD05.1021	DAF	700x700	ALUMINIUM	680	300	
VD05.1022	DAF	700x700	ALUMINIUM	910	400	1949906
VD05.1023	DAF	700x700	ALUMINIUM	1140	500	1949909/1949962
VD05.1024	DAF	700x700	ALUMINIUM	1360	600	1944806
VD05.1025	DAF	700x700	ALUMINIUM	1480	650	1949912
VD05.1026	DAF	700x700	ALUMINIUM	1590	700	2041734
VD05.1027	DAF	700x700	ALUMINIUM	1700	750	
VD05.1028	DAF	700x700	ALUMINIUM	1820	800	
VD05.1029	DAF	700x700	ALUMINIUM	1930	850	
VD05.1030	DAF	700x700	ALUMINIUM	2050	900	

1.5 mm-2 mm st 1303 DIN
1623 Steel material is welded
1,5/2.5 mm boffle is made
of body material. Welding robots
are produced.
Leakage and pressure
testing is done



700X 700 mm Steel

CODE	BRAND	MODEL	MATERIAL	LENGTH	VOLUME (liter)	OEM
VD05.2020	DAF	700x700	STEEL	460	200	
VD05.2021	DAF	700x700	STEEL	680	300	
VD05.2022	DAF	700x700	STEEL	910	400	
VD05.2023	DAF	700x700	STEEL	1140	500	
VD05.2024	DAF	700x700	STEEL	1360	600	1944806
VD05.2025	DAF	700x700	STEEL	1480	650	
VD05.2026	DAF	700x700	STEEL	1590	700	



DAF



VAKARDEPO

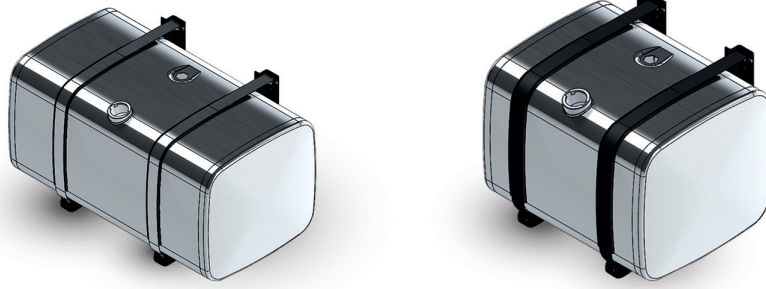
1982







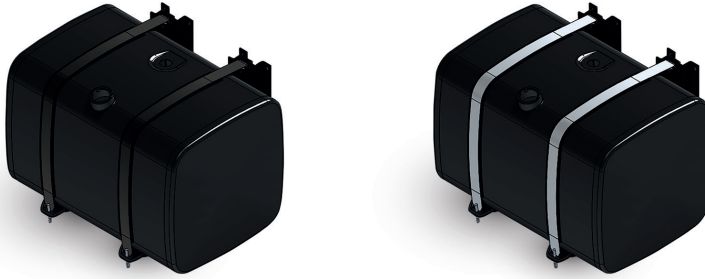
2.5 mm EN 1024 / 3.1 ALUMINIUM is used
2.5 mm from the breakwater body material is done
Welding robots are produced.
Sealing and pressure testing is done



620X 680 mm Aluminium

CODE	BRAND	MODEL	MATERIAL	LENGTH	VOLUME (liter)	OEM
VD06.1001	IVECO	620x680	ALUMINIUM	500	180	
VD06.1002	IVECO	620x680	ALUMINIUM	650	240	
VD06.1003	IVECO	620x680	ALUMINIUM	750	265	1681823/1797438
VD06.1004	IVECO	620x680	ALUMINIUM	930	330	1681816
VD06.1005	IVECO	620x680	ALUMINIUM	1080	390	42075937
VD06.1006	IVECO	620x680	ALUMINIUM	1170	430	1681824/1378084
VD06.1007	IVECO	620x680	ALUMINIUM	1300	465	
VD06.1008	IVECO	620x680	ALUMINIUM	1450	530	
VD06.1009	IVECO	620x680	ALUMINIUM	1700	620	1681826
VD06.1010	IVECO	620x680	ALUMINIUM	1950	710	
VD06.1011	IVECO	620x680	ALUMINIUM	2160	780	
VD06.1012	IVECO	620x680	ALUMINIUM	2340	870	1378078

1.5 mm-2 mm st 1303 DIN
1623 Steel material is used
1,5/2.5 mm boffle is made
of body material. Welding ro-
bots are produced.
Leakage and pressure
testing is done



620X 680 mm Steel

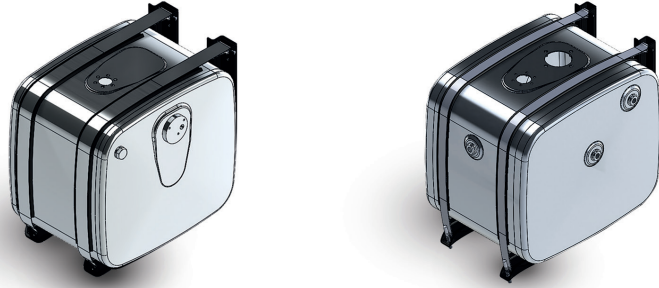
CODE	BRAND	MODEL	MATERIAL	LENGTH	VOLUME (liter)	OEM
VD06.2001	IVECO	620x680	STEEL	500	180	
VD06.2002	IVECO	620x680	STEEL	650	240	
VD06.2003	IVECO	620x680	STEEL	750	265	
VD06.2004	IVECO	620x680	STEEL	930	330	
VD06.2005	IVECO	620x680	STEEL	1080	390	
VD06.2006	IVECO	620x680	STEEL	1170	430	
VD06.2007	IVECO	620x680	STEEL	1300	465	
VD06.2008	IVECO	620x680	STEEL	1450	530	1999106

700 X 700 mm Aluminium

CODE	BRAND	MODEL	MATERIAL	LENGTH	VOLUME (liter)	OEM
VD06.1013	IVECO	700X700	ALUMINIUM	1800	900	
VD06.1014	IVECO	700X700	ALUMINIUM	1850	930	
VD06.1015	IVECO	700X700	ALUMINIUM	2000	1000	
VD06.1016	IVECO	700X700	ALUMINIUM	2100	1050	



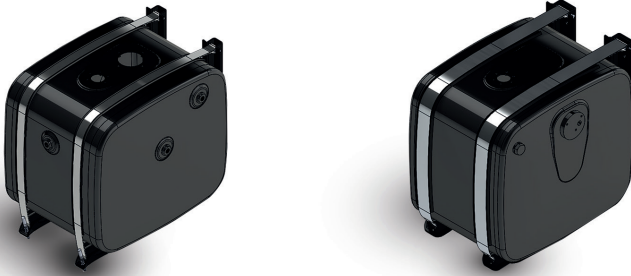
IVECO



HYDRAULIC TANK

CODE	BRAND	MODEL	MATERIAL	LENGTH	VOLUME (liter)	OEM
VD10.1005		560X640X350	ALUMINIUM		120	
VD10.1006		560X640X405	ALUMINIUM		130	
VD10.1007		560X640X445	ALUMINIUM		140	
VD10.1008		560X640X470	ALUMINIUM		150	
VD10.1009		560X640X500	ALUMINIUM		160	
VD10.1010		560X640X530	ALUMINIUM		170	
VD10.1011		560X640X560	ALUMINIUM		180	
VD10.1012		560X640X600	ALUMINIUM		190	
VD10.1013		560X640X625	ALUMINIUM		200	
VD10.1014		560X640X655	ALUMINIUM		210	
VD10.1015		560X640X685	ALUMINIUM		220	
VD10.1016		560X640X720	ALUMINIUM		230	
VD10.1017		560X640X750	ALUMINIUM		240	
VD05.2026		560x640	ALUMINIUM		200	
VD05.2026		560x640	ALUMINIUM		200	

CODE	BRAND	MODEL	MATERIAL	LENGTH	VOLUME (liter)	OEM
D10.1105		620X680X310	ALUMINIUM		120	
VD10.1106		620X680X335	ALUMINIUM		130	
VD10.1107		620X680X360	ALUMINIUM		140	
VD10.1108		620X680X385	ALUMINIUM		150	
VD10.1109		620X680X410	ALUMINIUM		160	
VD10.1110		620X680X435	ALUMINIUM		170	
VD10.1111		620X680X460	ALUMINIUM		180	
VD10.1112		620X680X490	ALUMINIUM		190	
VD10.1113		620X680X510	ALUMINIUM		200	
VD10.1114		620X680X540	ALUMINIUM		210	
VD10.1115		620X680X565	ALUMINIUM		220	
VD10.1116		620X680X590	ALUMINIUM		230	
VD10.1117		620X680X615	ALUMINIUM		240	

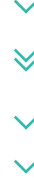


CODE	BRAND	MODEL	MATERIAL	LENGTH	VOLUME (liter)	OEM
VD10.2005		560X640X375	STEEL		120	
VD10.2006		560X640X405	STEEL		130	
VD10.2007		560X640X440	STEEL		140	
VD10.2008		560X640X470	STEEL		150	
VD10.2009		560X640X500	STEEL		160	
VD10.2010		560X640X530	STEEL		170	
VD10.2011		560X640X560	STEEL		180	
VD10.2012		560X640X600	STEEL		190	
VD10.2013		560X640X625	STEEL		200	
VD10.2014		560X640X655	STEEL		210	
VD10.2015		560X640X685	STEEL		220	
VD10.2016		560X640X720	STEEL		230	
VD10.2017		560X640X750	STEEL		240	

CODE	BRAND	MODEL	MATERIAL	LENGTH	VOLUME (liter)	OEM
VD10.2105		620X680X310	STEEL		120	
VD10.2106		620X680X335	STEEL		130	
VD10.2107		620X680X360	STEEL		140	
VD10.2108		620X680X385	STEEL		150	
VD10.2109		620X680X410	STEEL		160	
VD10.2110		620X680X435	STEEL		170	
VD10.2111		620X680X460	STEEL		180	
VD10.2112		620X680X490	STEEL		190	
VD10.2113		620X680X510	STEEL		200	
VD10.2114		620X680X540	STEEL		210	
VD10.2115		620X680X565	STEEL		220	
VD10.2116		620X680X590	STEEL		230	
VD10.2117		620X680X615	STEEL		240	



HYDRAULIC TANK



BETTER PRODUCTS FOR
A BETTER ENVIRONMENT...



VAKARDEPO
1982

📍 Gümüşova Organize Sanayi Bölgesi
Selamlar Mevkii 16/2
DÜZCE / TÜRKİYE

☎ +90 380 537 50 54
☎ +90 380 537 52 54
✉ info@vakardepo.com.tr
🌐 www.vakardepo.com.tr

