

Arts of Manufacturing



Pol. Ind. Erramone A-1-1 / E-20850 Mendaro
Gipuzkoa (Spain)
Tel. +34 943 755 060
info@rts-sa.es

www.rts-sa.com



globalone
automotive

TEMOT



TecAlliance
TecDoc Inside



EAC



www.rts-sa.com



Arts of Manufacturing

European manufacturer continuously developing Steering and Suspension products for passenger and commercial vehicles.

More than 500 new products a year

All duly approved, our products are designed to pass the most demanding dynamic tests. We work on these developments in our R&D&I laboratory together with international institutes and laboratories.

Continuously developing manufacturers

We have the widest manufactured product range in the Independent Aftermarket (IAM) and are Europe's largest independent aftermarket manufacturer.

We are the largest company in this sector in Europe, with a focus on quality, service and an excellent range of products designed by experienced mechanical engineers with expertise in steering and suspension.

Very robust parts and with guarantee

All the materials and treatments that we apply in the manufacture allow us to obtain VERY ROBUST products with a proven level of DURABILITY, offering for example a very high resistance to extreme temperatures.

We are the manufacturer in the sector that offers the BIGGEST GUARANTEE ON THE MARKET.

Presence on 5 continents

We export to more than 75 countries from our European logistics centre.

Proven quality

All our products are approved, both in the passenger vehicle and commercial range, complying with the established standards and specifications for maximum safety and technical performance. RTS has implemented an integrated quality management system ISO9001 and environmental management system ISO14001.

Made in Europe

At RTS we have been manufacturing our products in Spain for more than 35 years with the original quality standards (OE), the most modern means of production and the most qualified human team. We are a European reference, leader in the manufacture of Suspension and Steering products.

+ 5,000
references

+ 35,000
applications for
international markets

+ 500
new products a year

100%
in-house design

100%
products tested by RTS
pre-commercialization that
guarantee robustness and
durability equal or superior
to the original part

+1,300
tests performed each year

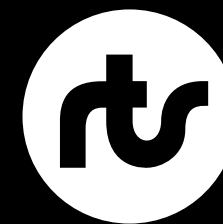
Annual production capacity of
10,000,000
Steering and Suspension products

**We are
manufacturers**

OUR RANGE FOR PASSENGER VEHICLES.

MAXIMUM ROAD SAFETY.

Our ultimate commitment: providing the safety that vehicles need.



At RTS we have a **wide range** for passenger vehicles: more than 5000 references for more than 30000 applications in Europe, Asia and America and more than 500 new developments per year.

We only use certified materials of the highest quality for maximum durability of our parts.

We adapt to our customers' needs, such as with our high-class packaging with individual boxes or our service rate commitment, which exceeds 95%.

With almost **40 years' experience** as a manufacturer for passenger vehicles, our policy of quality standards guarantees us in this sector.

STEERING

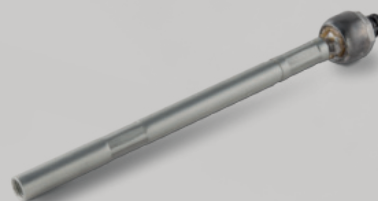
• Tie Rod Ends:

Joint between the drag link and the journal. It allows the chassis to flex when there are potholes in the road, without affecting the steering box.



• Inner Tie Rods:

Mounted on the ends of the rack, they prevent oscillations from the wheel-journal from reaching the steering box.



• Tie Rod Assemblies:

Their mission is to directly transfer the effect of the steering wheel to the wheels.



• Drag Links:

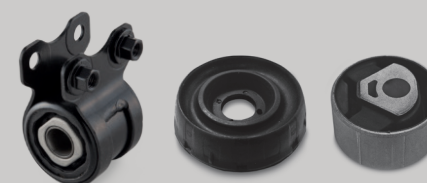
They allow the steering to be more flexible and precise on uneven ground. Their mission is to directly transfer the effect of the steering wheel to the wheels.



SUSPENSION

• Silentblocks, top strut mounting and engine mounting complete:

They absorb the transmission of chassis vibrations to the bodywork (passenger compartment) of the vehicle. At the same time, they reduce noise and absorb part of the displacement of the suspension. All together, they make driving less abrupt and uncomfortable for the passengers of the vehicle.



• Stabilising links:

Connecting element serving as a link between the anti-roll bar and the suspension system of the vehicle. Their mission is to offset the oscillations of the shock absorbers by means of the anti-roll bar to attain vehicle stability.



• Supports:

Their mission is to allow the anti-roll bar to rotate, enabling it to offset the oscillations from the road and guarantee vehicle stability.



• Wishbone arms:

Their function in the suspension is to join the wheel assembly to the vehicle chassis. This joint absorbs vertical movements by keeping the wheels of the vehicle in constant contact with the ground..



• Ball Joints:

They connect the upper and lower ends of the journal to the suspension arms, allowing the oscillations of the wheel-journal to copy the road profile.



• Track Control Arms:

They connect the journal to the chassis. They are conditional on the suspension to absorb vertical movements. They are equipped with an integrated ball joint.



PASSENGER VEHICLES

OUR RANGE FOR COMMERCIAL VEHICLES.

PRECISION AND STRENGTH.

Parts manufactured to obtain robust products with a high level of durability.

We respond with the **greatest** of **guarantees** to this demanding sector.

RTS is firmly committed to this sector, in which we will continue to generate developments to launch new references on the market.

With the same policy of quality standards as always, the **experience of almost 40 years** as a manufacturer of passenger vehicles supports us in this sector.

The commercial vehicle range has the same standards as the passenger vehicle range, offering **maximum reliability** and the **highest availability**.

STEERING

• Tie Rod Ends:

Joint between the drag link and the journal. It allows the chassis to flex when there are potholes in the road, without affecting the steering box.



• Drag Links:

They allow the steering to be more flexible and precise on uneven ground. Their mission is to directly transfer the effect of the steering wheel to the wheels.



SUSPENSION

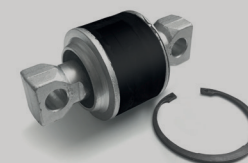
• Track Control Arms:

They connect the journal to the chassis. They are conditional on the suspension to absorb vertical movements. They are equipped with an integrated ball joint.



• Silentblocks:

They absorb the vibrations transferred to the vehicle body while reducing noise and absorbing part of the suspension movements.



• Stabilising links:

Connecting element serving as a link between the anti-roll bar and the suspension system of the vehicle. Their mission is to offset the oscillations of the shock absorbers by means of the anti-roll bar to attain vehicle stability.



• Wishbone arms in V:

Their role is to join the wheel set to the vehicle chassis. This union absorbs vertical movements, keeping the vehicle wheels in constant contact with the ground.



COMMERCIAL VEHICLES

