



SUPERLEE

VEHICLE LIGHTING SOLUTION

COMPANY PROFILE

Table of Contents

1. Company Profile
2. Engineering Capability
3. Laboratory Capability
4. Manufacturing Capability & Facility

Company Profile

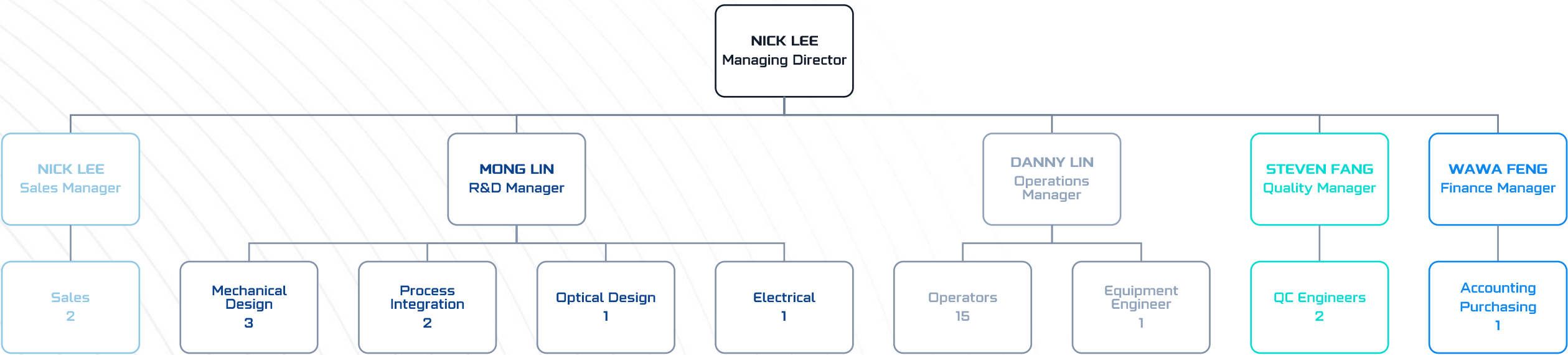
Company Facts

Company Name	Superlee Corporation
Established	April 1980
Main Products	Vehicular lighting products (AM/OEM)
Registered capital	USD 673,000
Facility size	9,699 sqm
Address	No.175, Chenggong 9 th St., Guiren Dist., Tainan 71151, Taiwan R.O.C.
Tel	+886-6-3300088
Fax	+886-6-2306583
Website	www.superlee.com.tw
E-mail	sales@superlee.com.tw
Employee size	36
D-U-N-S Number	657 434 361

Founded in 1980, Superlee Corporation has been designing and manufacturing innovative and reliable vehicular lighting products for OEM and aftermarket customers across the globe. Initially started out in the automotive parts and accessories industry, Superlee now provides lighting solutions for diverse applications, including heavy duty trucking, agricultural machinery, construction equipment, mining, marine, powersports, and etc.

In over four decade's time, we have accumulated abundant experiences to undertake any client requirements, and take pride that our products are designed, engineered, and manufactured in Tainan, Taiwan. Quality is our top priority, and we incessantly strive to breakthrough and pursue perfection from design and process standpoints. We have a proven track record of providing satisfactory products and unparalleled services, and we endeavor to be a long-term business partner that you can trust.

Organization Structure



Customers Overview

North America

- Dieters
- Trux
- Harley Davidson
- Czinger
- United Pacific
- Automann
- Dorman Products
- Driven Lighting Group
- XOS Trucks
- Fab Fours
- Argo
- Theron
- Putco

South America

- Resedisa
- Grupo Autocar

Europe

- Arc Vehicle
- Ginetta
- BEE Lighting
- Garia
- Switch Mobility
- Paaschburg & Wunderlich
- Sanel
- BMC
- Bozankaya
- Mulag

Middle East & Africa

- Pentagram
- MCV

South Asia

- Lumax
- Fiem
- Mahindra
- Yatri Motorcycles

Japan

- Corlant
- Tadano
- IPF
- Takeuchi Mfg

Southeast Asia

- Pioneer Truck
- Poolpan

Australia

- Vision Automotive
- ARB
- Terex

MAJOR CUSTOMERS - OE & AM

OEM



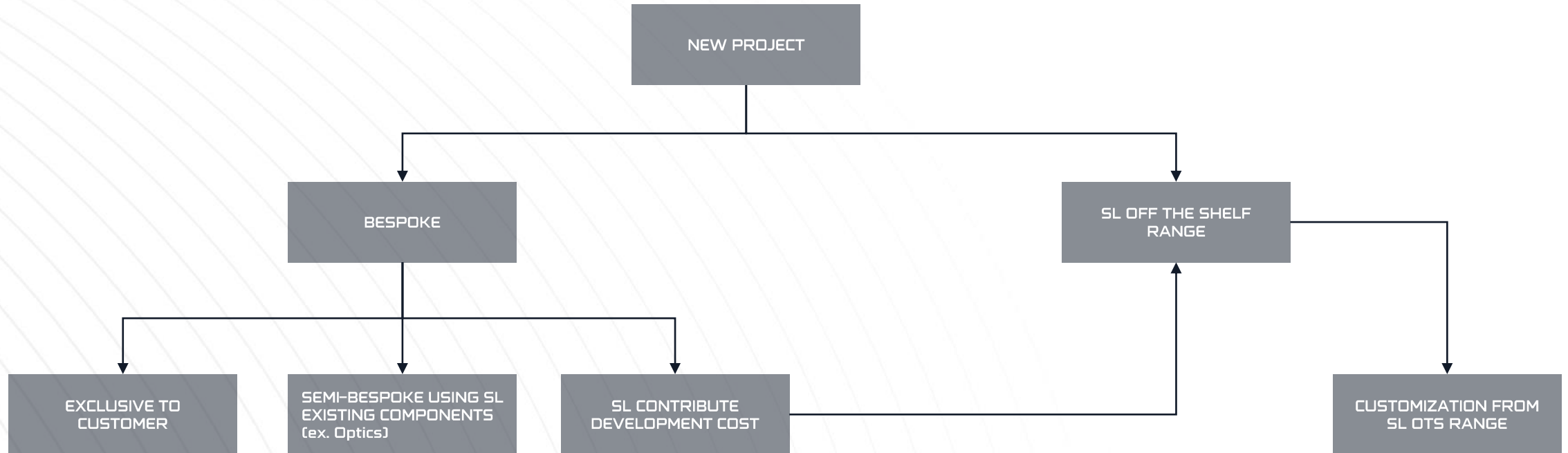
AM



BUSINESS SEGMENTS



NEW PROJECT SOLUTIONS



OEM References

Harley Davidson Engine Guard-Mounted Fog Lamps



OEM part number: 68913-98C

Toyota Matrix 03-08 Fog Lights



OEM part number: 81220-01011

Yatri Motorcycles 5.75" Headlight / Direction Indicator



OEM References

Ginetta
Bi-LED Headlamp



Front lamp 90mm Bi-LED lamp
CON-P112-L

Mahindra Bolero Ambulance
Interior Light



1702CAA00171N

Tadano
DI/FP



349-322-63100

OEM References

Garia

DRL/DI/FP

Bi-LED Headlamp

Rear Combination Light



Front lamp 90mm Bi-LED lamp

Front lamp eyebrow LH

Front lamp eyebrow RH

Rear lamp LH

Rear lamp RH

D22 722 001 00

D22 722 003 00

D22 722 004 00

D22 731 001 00

D22 731 002 00

DRL/DI/FP



Rear Combination Light



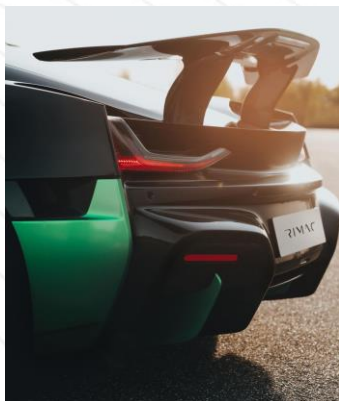
Bi-LED Headlamp



OEM References

RIMAC

Side Repeater, Side Marker/Reflex, Rear Reflex
Lighting Design and Lens Tooling/Production

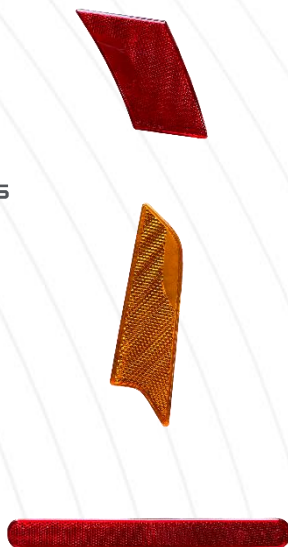


LNS-0817/0818 SMLR Lens
Design, tooling, production

LNS-0819/0820 SMLR Lens
Design, tooling, production

LNS-0843/0844 RR Lens
Design, tooling, production

LNS-0941/0932 SDI Light
Guide
Design, tooling, production



Automobili Pininfarina

Side Repeater, Side Marker/Reflex, Rear Reflex
Lighting Design and Lens Tooling/Production



LNS-2811/2/3/4 SMLR Lens
Design, tooling, production

LNS-0857/0858 RR Lens
Design, tooling, production



Toyota Kuwait

RAV4
Footwell Light



OEM P/N: FTL01-GNRIC-20-BLU

OEM References

Terex Franna MAC25 AT22
4"x6" Headlamp



Headlight LED Insert High/Low Beam
T177713

Arc Vector
Headlamp / Rear Lamp



Toyota Canada
TUNDRA TAILGATE LIGHT BAR



STOP/TAIL/SEQUENTIAL INDICATOR/REVERSE
PK539-34N00

OEM References

Manufacturing Commercial
Vehicles (MCV)
90mm High/Low Beam



Front lamp 90mm Bi-LED lamp
SED17100601001

Trevor Motorcycles
5.75" Headlight



TEVVA
90mm High/Low Beam



OEM References

XOS

4"X6" High/Low Beam
DRL/DI/POS



THERON

90mm High/Low Beam



TAKEUCHI

Headlight + FDI

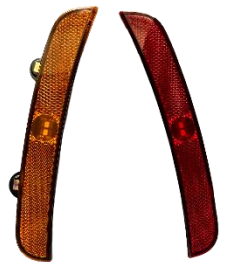
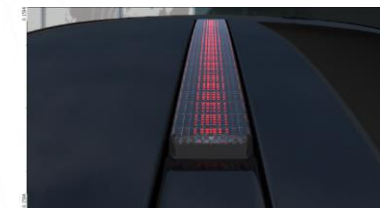
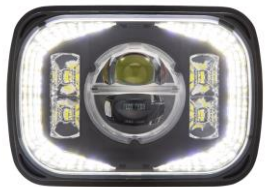


OEM References

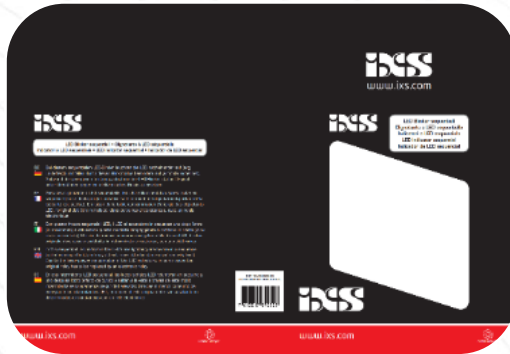
ARGO
5"X7" HEADLIGHT
LOW/HIGH/DRL/DI/POS

SWITCH MOBILITY
DRL/DI/POS
STOP/TAIL
RDI

CZINGER
SIDE MARKER REFLEX
CHMSL
SDI/RDI



Private Labeling



iXS



TRUX



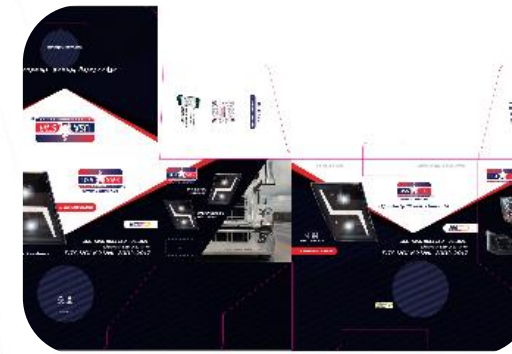
AUTOMANN



Pilot Automotive



PIAA



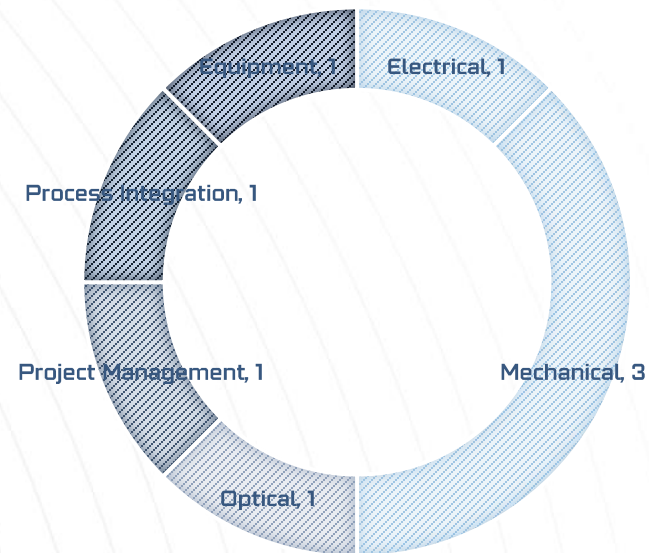
Miami Star

R&D Resource

R&D Resources

Presented in number of dedicated R&D engineers

■ Electrical ■ Mechanical ■ Optical ■ Project Management ■ Process Integration ■ Equipment



ENGINEERING CAPABILITY

Design Software

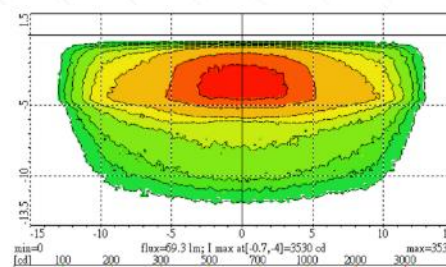
Mechanical Design

- CATIA V5-6 Release 2014
- AutoCAD



Optical Design

- LucidShape 2.0



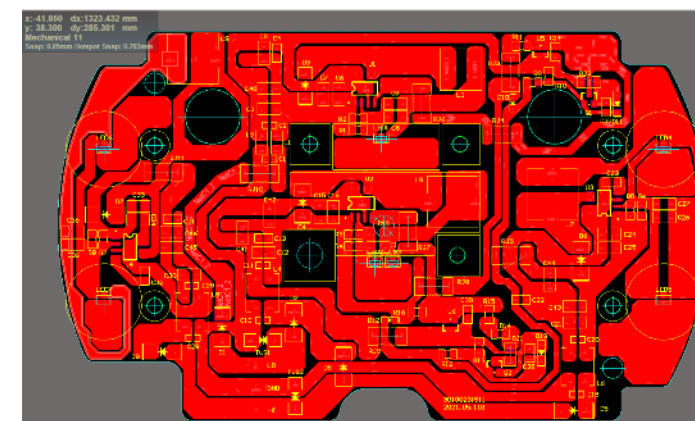
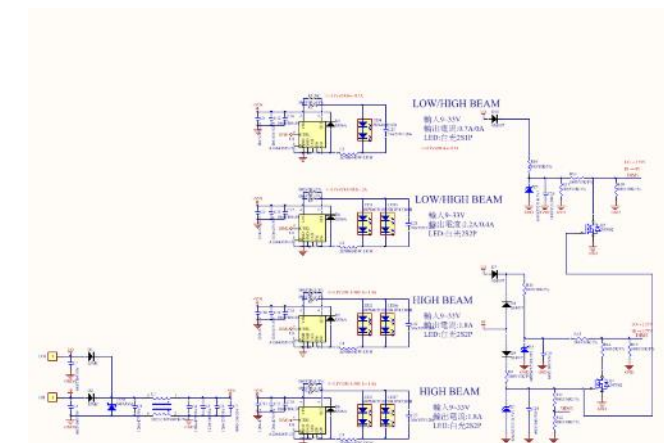
Date : Tue Dec 22 09:35:56 2020
 ScaleX : 1
 LID name : Luminous Intensity [cd]
 Regulation: ECE low beam R113 Class A headlamp 13.2V cd

name	value OK	min [cd]	max [cd]	test pos./area H,H/V,V [deg]	found pos. [deg]
0-15U 5L-5R	5.21 OK	--	320.0	-5.0, 0.0 ; 5.0, 15.0	0.0, 0.0
25L-25R	1436.8 OK	1100.0	--	-5.0, 5.0 / -1.7	5.0, -1.7
12.5L-12.5R	2040.0 OK	550.0	--	-5.0, 5.0 / -3.4	-5.0, -3.4
Grad 2.5L	0.89 OK	0.08	--	-2.5, -2.5 ; -2.0, 2.0	-2.5, -0.6
Grad 2.5R	0.97 OK	0.08	--	2.5, 2.5 ; -2.0, 2.0	2.5, -0.6
Linearity	0.00 OK	--	0.30	-3.0, 3.0 ; -1.2, -0.8	

The light distribution is OK

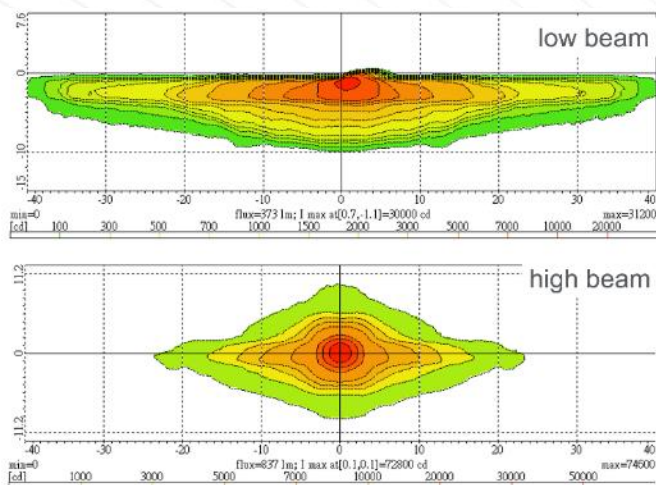
Electrical

- Altium Designer



Optical Capability

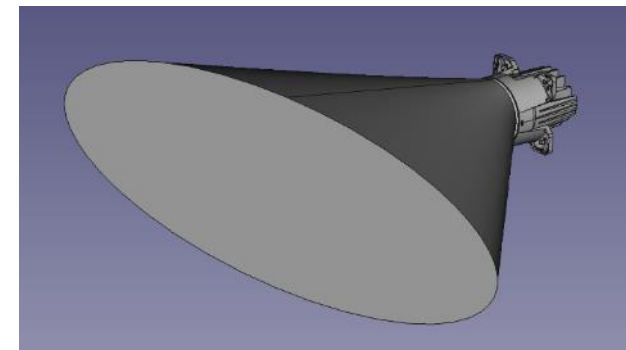
Optical Simulation



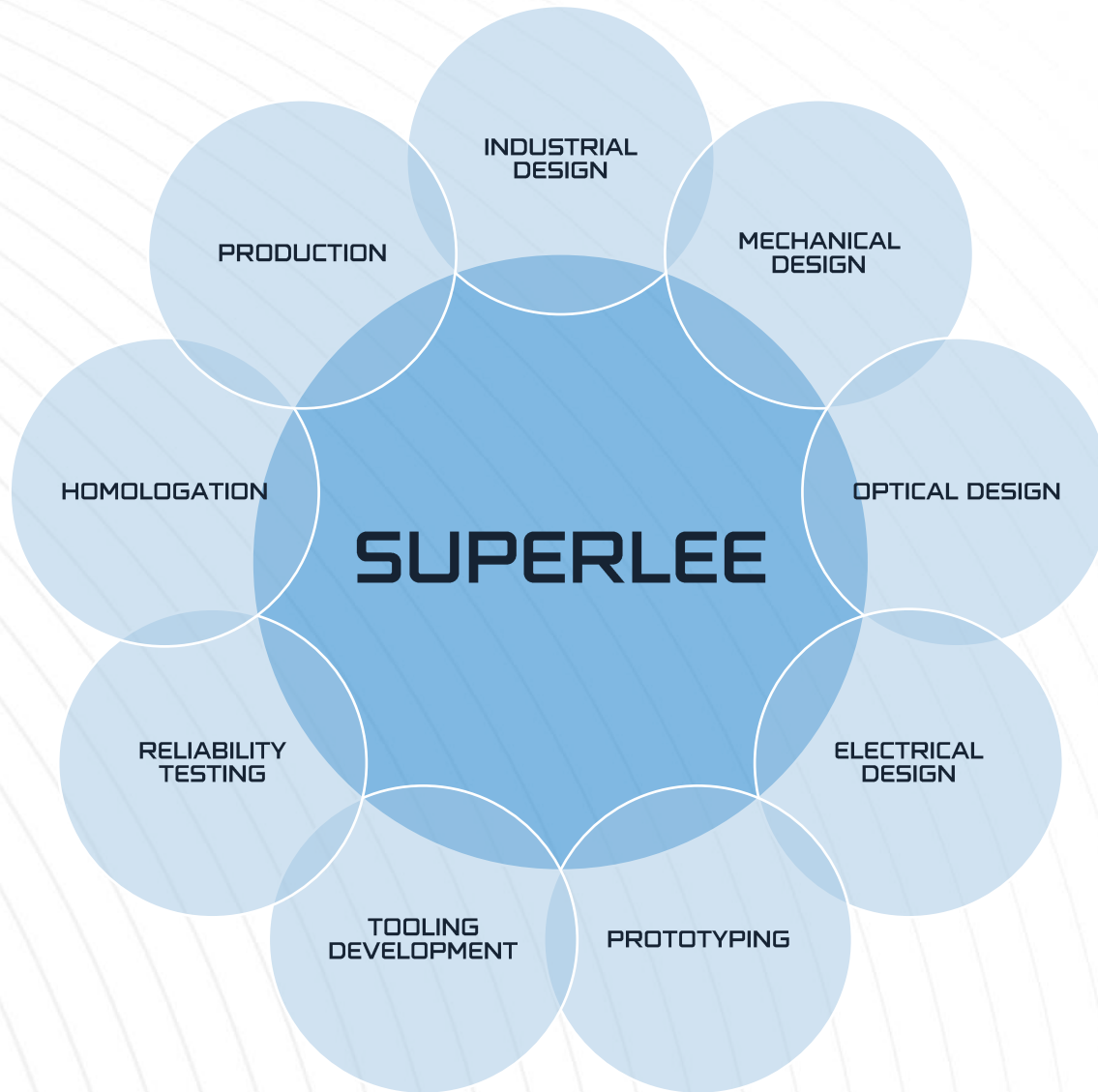
Visual Rendering



Light Cone



Capabilities



Product Development Process

1. Industrial design and styling
2. Feasibility study
3. Mechanical, optical, electrical design
4. 3D design, rendering, and simulation confirmation
5. Prototyping
6. Tooling development
7. Homologation and reliability testing
8. Pilot run
9. Mass production

LABORATORY CAPABILITY

Laboratory Testing Equipment

Function	Equipment
Optical	LMT Photometer
	Integrating sphere
Reliability	Temperature and humidity chamber
	Water immersion tester
	Salt spray chamber
	Air leak tester
Electrical	Oscilloscope
	Programmable DC Power supply
	DC Power supply
	Thermal imager
	Thermometer / Datalogger
	Multimeter
	Heating plate

Superlee's in-house laboratory has the capability to conduct most tests required by customers and to support research and development activities

Testing Equipment

Water Immersion Test



Salt Spray Tester



Temperature and Humidity Tester



Programmable DC power supply



Air Leak Tester



In-House Dark Room



Goniophotometer



DC power supply



MANUFACTURING CAPABILITY & Facility

Production



ASSEMBLY

- Electronic SOP guided
- 100% testing
- 100% aging test
- Production batch traceability

Production Equipment

Equipment List	Assembly Line Tools
ABB IRB-1600 6-Axis Automated Fluid Dispensing Robot	FB08D Digital Syringe Dispenser
ARO 5 Gallon Glue Pump	Soldering Station
Tabletop 3-Axis Automated Fluid Dispensing Robot	Hot Air Gun
30W Fiber Laser Marking Machine	Pneumatic Pull Setter
1500W Burn-In Station	Torque Calibrator
Air Leak Tester	Keyence Wide Area Static Elimination Blower
Baking Oven	Keyence Static Elimination Gun
In-line Beam Angle Adjuster	Keyence Static Sensor
Paint Booth	Soldering Fume Filter
Ultrasonic Welding Machine	ATOM 3 FDM 3D Printer
Plasma Surface Treatment Machine	SPC Controlled Automotive Glue Weight Monitoring System
Atlas Copco GA15+ Compressor	

In an effort to produce the best products and to remain competitive, Superlee constantly re-examines our manufacturing processes and seek ways to streamline the processes to improve the quality of our products

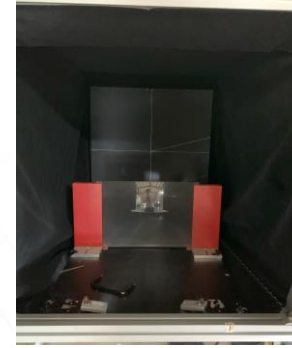
Production Equipment



Ultrasonic welder



6-Axis robot



In-line photometric tester



3-Axis robot



Burn-In Station



Glue Curing Station



Soldering Fume Extractor



Laser Engraving

Production Equipment



Assembly Line 1



Assembly Line 2



Plasma Etching Machine



Keyence Electrostatic Sensor



Glue Pump



Baking Oven



Soldering Station



Electrostatic Eliminator

Production Equipment



ATOM 3D Printer



**SPC Controlled Automatic
Glue Weight Monitoring
System**



**Atlas Copco GA15+
Compressor**



Electronic SOP



2 Part Potting Equipment



Vacuum Oven

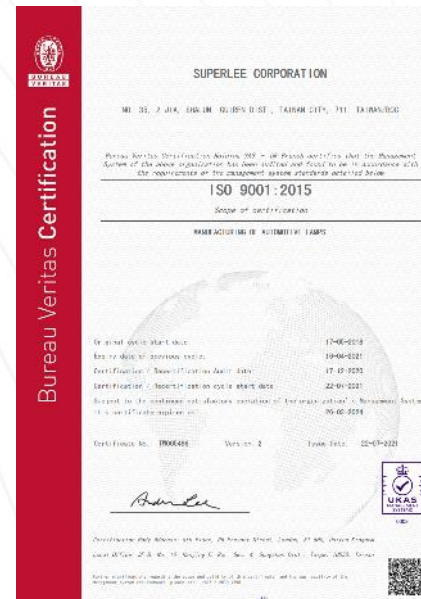


Foam in place Packaging

Certification

Superlee is an ISO 9001 and IATF 16949 certified company. We incessantly strive to provide products with consistent quality to our customers

We have the capability and know-how to design products to comply to varying regulatory requirements, including SAE, DOT, ECE, AIS, ADR, and etc. We offer unmatched flexibility in meeting customer requirements for a variety of lighting applications



THANK YOU

