



AATOMIZE[®]
OUR PARTS MAKE YOU WHOLE

MANUFACTURING
SHEET METAL
COMPONENTS



OUR PARTS MAKE YOU WHOLE

COMPANY PROFILE

AATOMIZE group of companies are present in segment like machinery R&D, Sheet metal machinery manufacturer, Food machine manufacturer and Induction motor manufacturer. **AATOMIZE** is leading manufacturer, Exporter and Supplier of excellent quality Sheet Metal Parts, Automotive Components, Pump Parts, Shaft Key/Washers, Bearing Cover, Flour Mill Spare Parts, Elevator Parts, Custom Design Sheet Metal Parts, Precision CNC Machined Parts and Precision VMC Machined Parts, Laser & Banding Work. We are capable of manufacturing sheet metal welded parts with precession machining work. Bulk production is possible due to our strong infrastructure and in-house capabilities from R&D to final part supply set-up equipped with modern machines and backed up with a team of experts. This also enables us to provide customization at fastest and most effective cost.

OUR GOAL

Our goal is to enhance the brand visibility and establish the company as a leading provider of high-quality sheet metal products in India and globally, with a focus on serving automotive manufacturers and industrial clients.

QUALITY

We are committed to providing better quality in product and services beyond the customers expectation. The expertise of our work is always reflects in our quality products.

Committed to Quality.
Committed to You.

OUR STRENGTH

GROUP OF COMPANIES



AATOMIZE[®]
NEVER COMPROMISE

AATOMIZE is Providing All Kind of Grinding Solutions in One Place

www.aatomize.com

Authentic & Traditional Indian Spices & Varieties of Flours

www.aatomizespices.com



AATOMIZE[®]
SPICES



AAVARON[®]
ISLAND OF MACHINERY

India's No. 1 Manufacturing of Pulverizer Machines

www.aavaron.in

World Class Manufacturing of AC Induction Motor Drives

www.9primevolt.com



9 PRIMEVOLT[®]
INDIA PVT. LTD.



AARNDE
QUALITY IS OUR DEPTH

Widely Manufacturer of Coffee Roaster Machines

www.aarndeprojects.com

Manufacturing of Power Press & Pneumatic Press Machines

www.digvijayengineers.com



Digvijay

PRESSING THE FUTURE
SINCE 1990



Model	OEM No.
1842 L.S.	6753300019
Actros Mp4	6753300119
OM 501	6703300119
OM 542	6703300219
ACTROS	10.645, 6553300419 S, 6553300519 S, 6553300719 S
AROCS	10.638
1013/1017	360 586 00 33
LK	000 330 1719 S
Actros, Arocs	346 330 02 19
UN 355	326 330 0219
BM 312	3435860233
* ATEGO	9703560615/AMPL046G
* VARIO BUS (B670)	4027816472186/AMPL422A
* Actros, Antos, Arocs, Axor	A0003340215/AMPL355A

Model	OEM No.
AXOR	655 330 0419
F90, M90, E90	81363056004
E2000	81.36305.0016 S1
O 303	360 330 06 19
ATEGO	0003301619 S, 6553300719 6253300619, 6553300519
EVOBUS	307 330 00 19
207D/208D	307 586 00 33
O303	3003300019
208 - D	601 586 50 33
BM 321	3433300219
Actros, Arocs	0003301319
* EVOBUS	A9423560015/AMPL189A
* Setra	9433340115/AMPL488A

* The Original Reference Made In The Above List Is For Indicative Nature Only

PRODUCT

MAN

KING PIN SET & ABS RING



Model	OEM No.
BMC SLF	082135829S1
ZF	730260702
F90, M90, E90	3463300019 S1
TGX, TGA, TGS, TGM	81363056004
MAN	4474385019, 81.36305.0015S, 81.36305.0014S, 81442056023
M2000, L2000	ZG.41271-0008
E2000	81.44205.6008, 81.44205.6009, 81.36305.0016 S1
F2000	3463300019, 81.36305.6001S, 81442056029, 81442056013
F90	3465860033, 20.681, 81442056026

Model	OEM No.
M 90	81442056020, 81442056018
TGA	81442056030
TGS	81442056037
TGX	20.548
MAN TGL	81442056033, 81442056034
M2000M	81442056025
TGM 2004-2021	81442056043
MAN 26.281	81442056010
208 - D	601 586 50 33
BM 321	3433300219
Actros, Arocs	000 330 1319
* L 2000	81.52403.6001
* M 2000 L	81.52403.6001

* The Original Reference Made In The Above List Is For Indicative Nature Only



Model	OEM No.
P, G, R, T, Series 4	1405343
F, K, N, Series 4	1912140
Bus	40.599
G 93	550 730
P93	550 729
P 113 - 112	550 722
R 113	40.514
G - B - T 82	550732
LB - LBS 85	550713
L- LS - 86	550714
LBS 111	550710
G - P - R 112	40.519

Model	OEM No.
L - LB - 81	550 733
T - G - P 82	550 711
L - LS - 85	550 723
L - LS - LT 110	40.516
94C, 94G	550284
114L, 114C	1348296
114G, 124L	1403808
144L, 144C	ZG.412630008
144G	40.518
94C, 94G	550257
114L, 114C	40.515
* 144G	1442300/AMPL297A

* The Original Reference Made In The Above List Is For Indicative Nature Only

PRODUCT

DAF

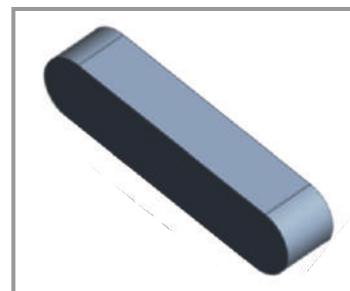
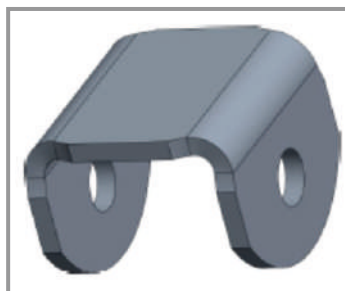
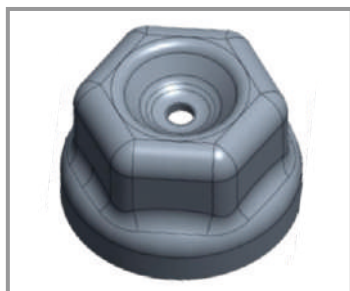
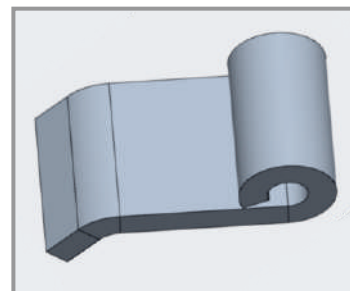
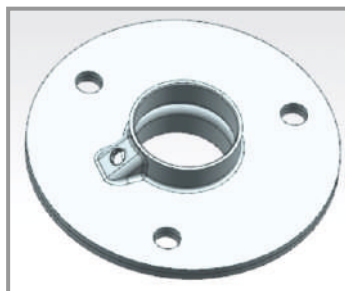
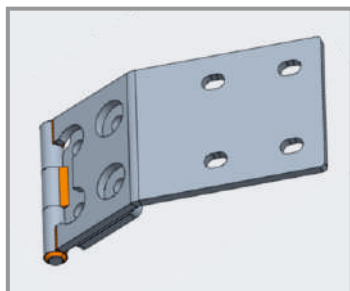
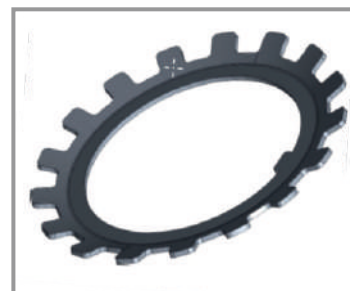
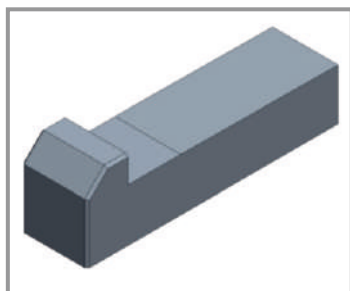
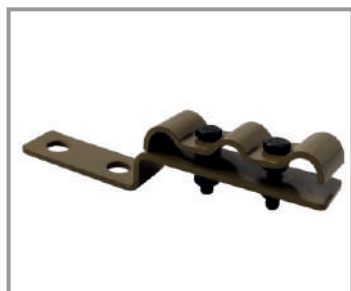
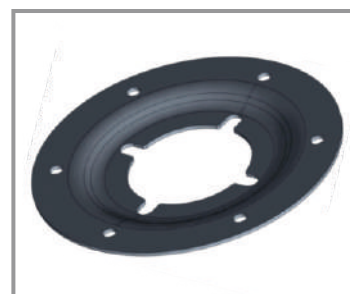
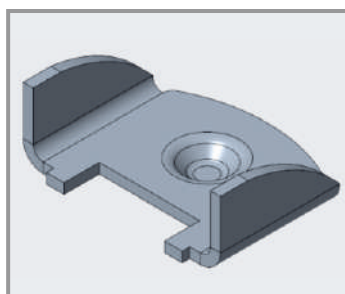
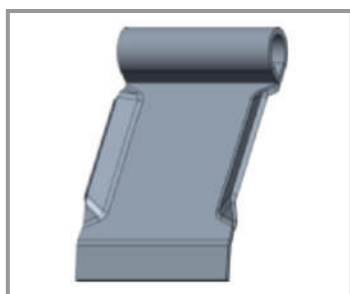
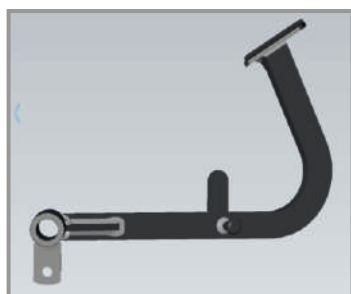
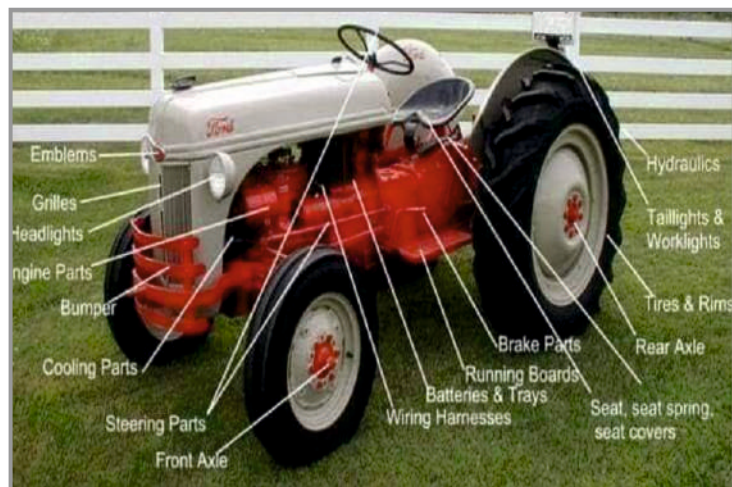
KING PIN SET & ABS RING



Model	OEM No.
FATİH - 220/26	57RS300407
FATİH - Y2200	KP.00006.01.02
FATİH 105, FATİH 110-08, CONQUEROR 130-14, BMC	8G4241
PRO 522, PROBUS 850	57RS307144
LF 45	1705454
F 1600, F 2100, F 2105, F 2300, F 2305	0681621 S1
45LF	0683469

Model	OEM No.
85FX	0681706 S1
DAF	0681702 S1
ROADRUNNER	KPKW008
DAF 45FA	KPKW030
F 60	0683485
45LF, CF 85, F48, 55LF	0683466
85 CF, 95, XF 95, XF 95II, XF 105	0683499 S1
* AMPL426A	1391515/1805821
* AMPL060G	1805822

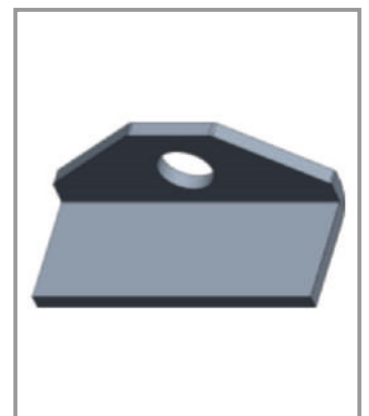
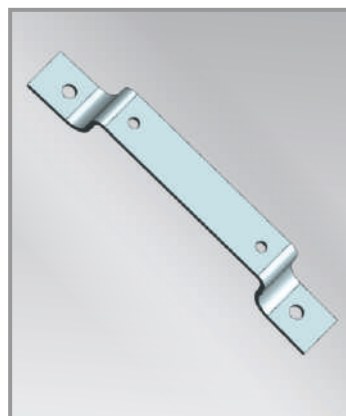
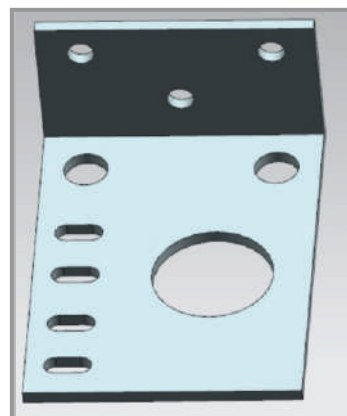
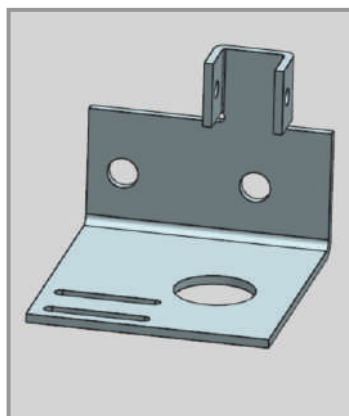
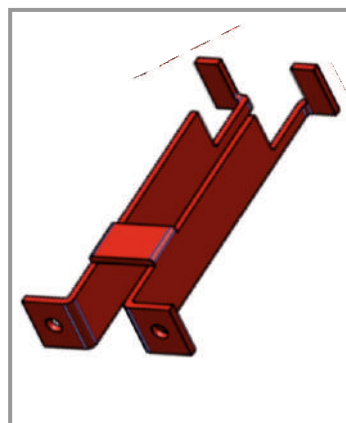
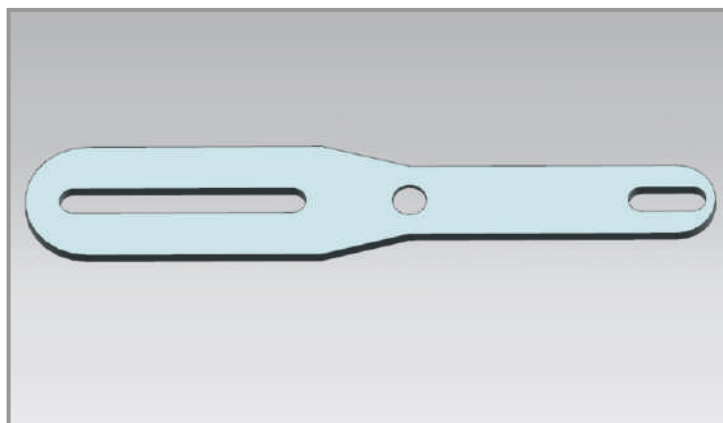
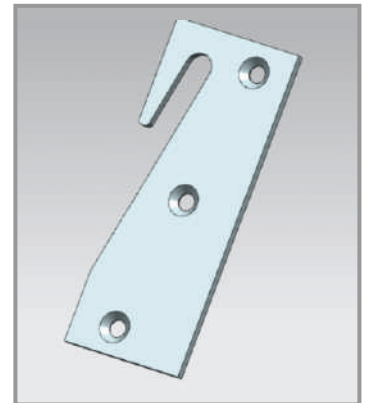
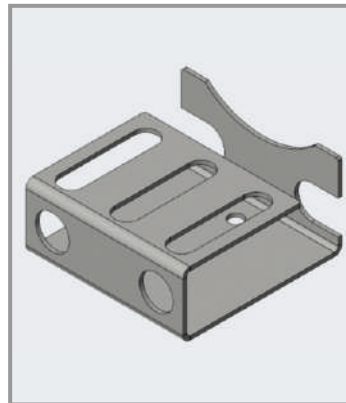
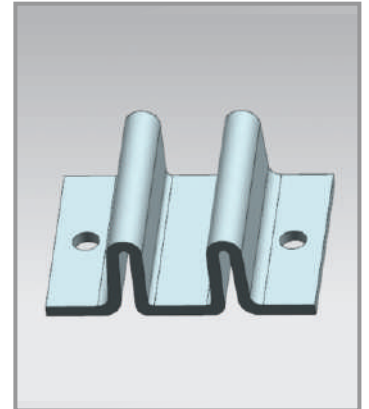
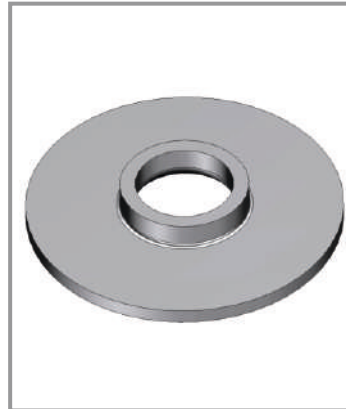
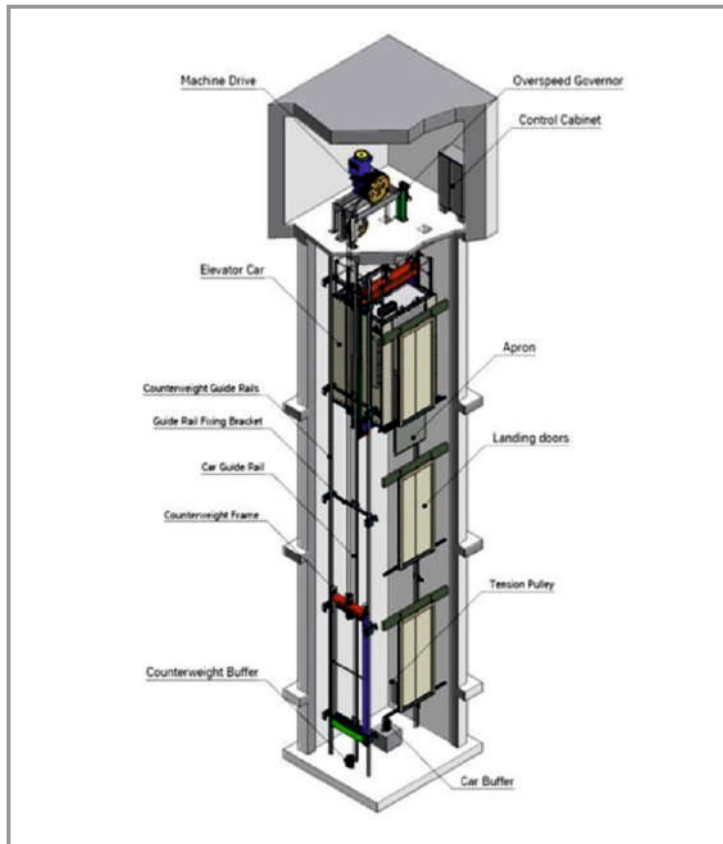
* The Original Reference Made In The Above List Is For Indicative Nature Only



PRODUCT

ELEVATOR

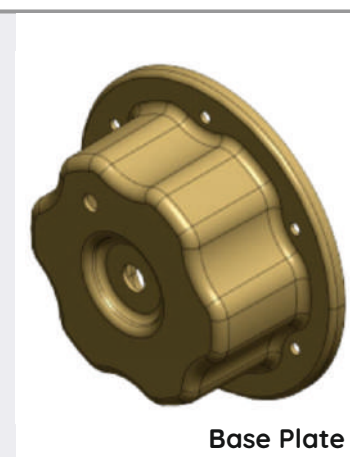
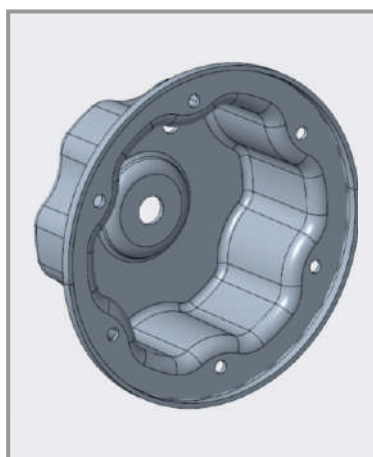
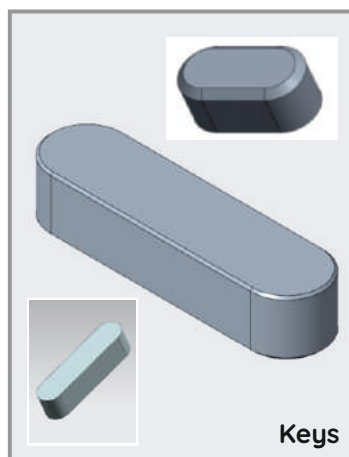
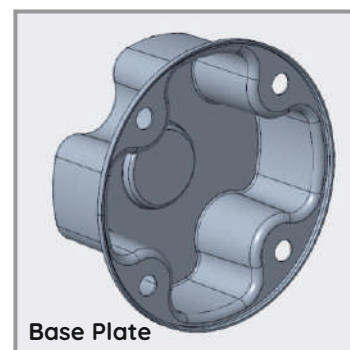
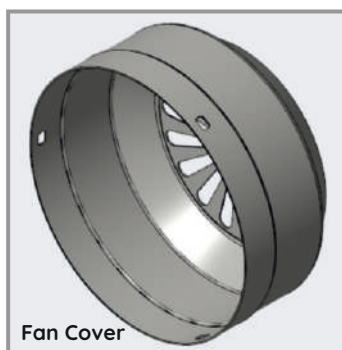
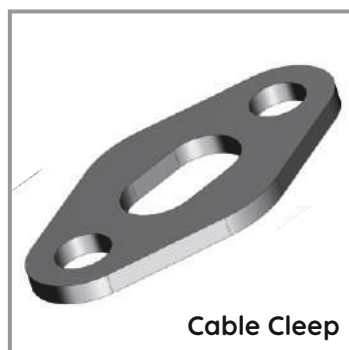
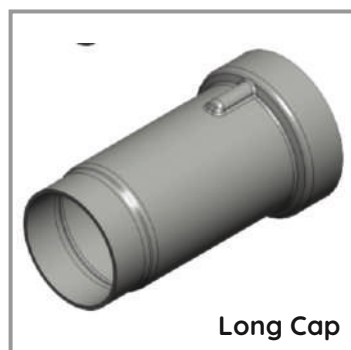
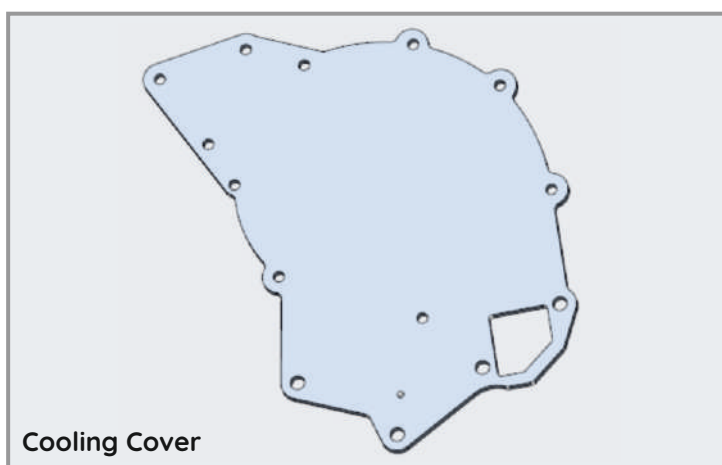
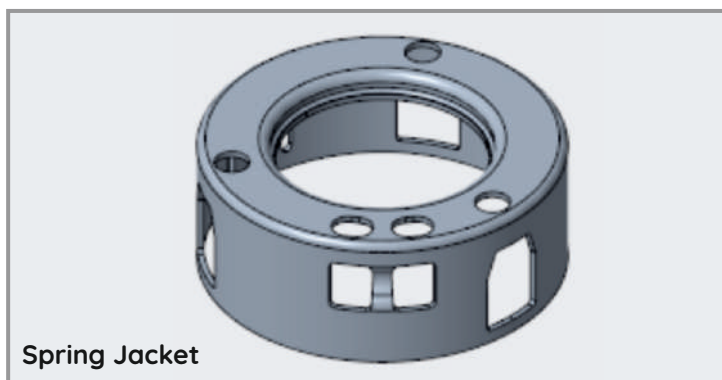
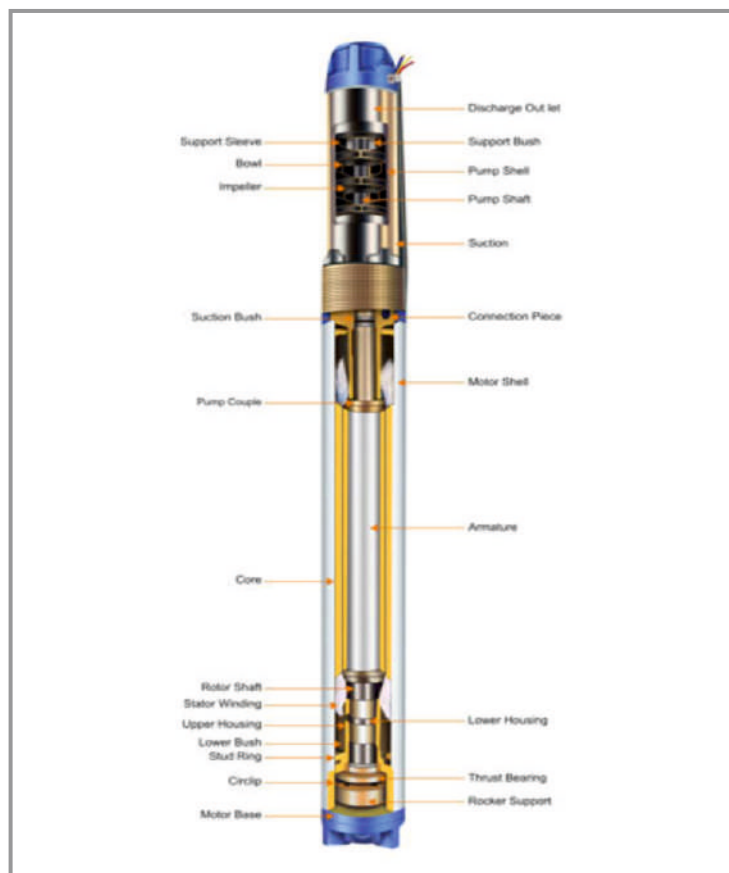
SPARE PARTS



SUBMERSIBLE

SPARE PARTS

PRODUCT



PRODUCT

SPECIAL MACHINED COMPONENTS

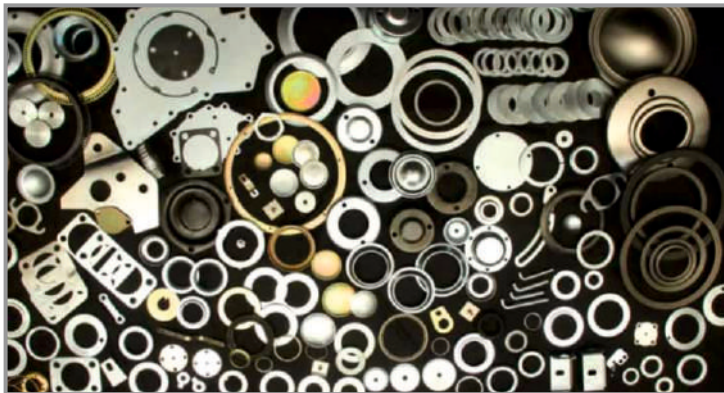
DEEP DRAWN COMPONENTS

PRESSED COMPONENTS

SHEET METAL COMPONENTS

CNC MACHINED COMPONENTS

CNC - LASER & BENDING



FOLLOW US
ON OUR SOCIAL NETWORKS



AAT@MIZE MANUFACTURING PVT. LTD.

Rajkot - 360024, Gujarat (INDIA).

E-Mail : export@amplindia.co.in

Web : www.amplindia.co.in

Contact : +91 85111 77165

Connect With Us



Download Brochure

