



# COOPER GASKETS

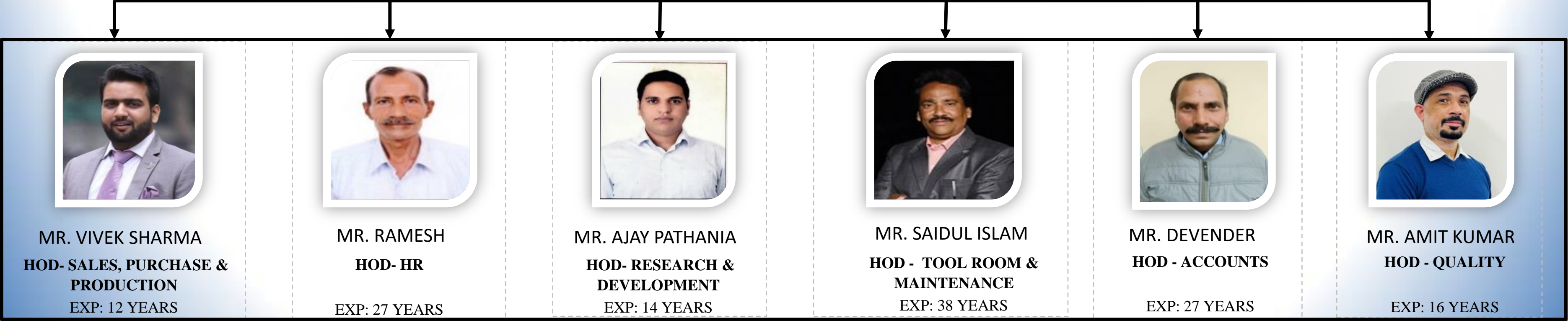
*Moving ahead with excellence...*

# COMPANY PROFILE



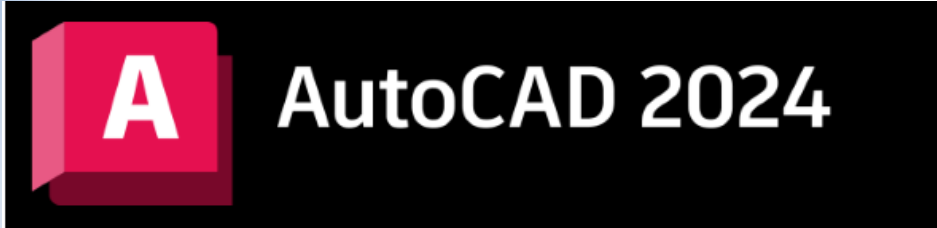
<b>Established</b>	<b>: 1978</b>
<b>Sales Turnover</b>	<b>: 344 Million</b>
<b>Covered Area</b>	<b>: 2100 Square Metres</b>
<b>Location</b>	<b>: Panchkula, Haryana</b>
<b>Number of Employees</b>	<b>: 80</b>

# LEADERSHIP ORGANIZATIONAL CHART





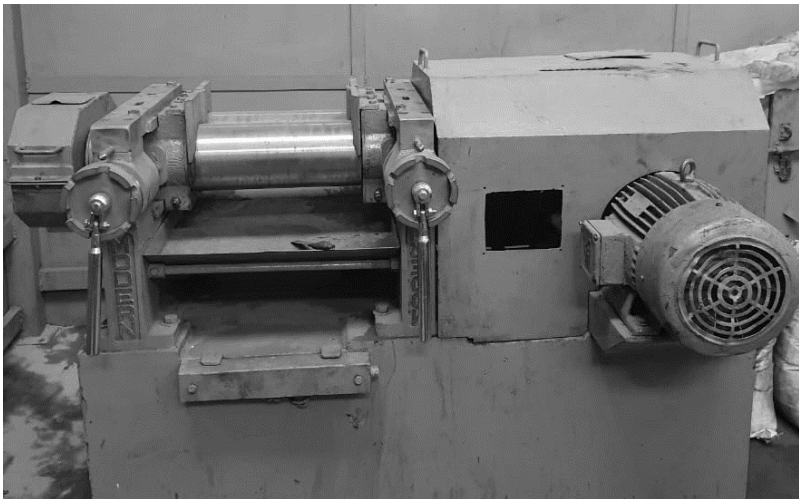
# TECHNOLOGICAL UPGRADATIONS IN THE LAST 3 YEARS



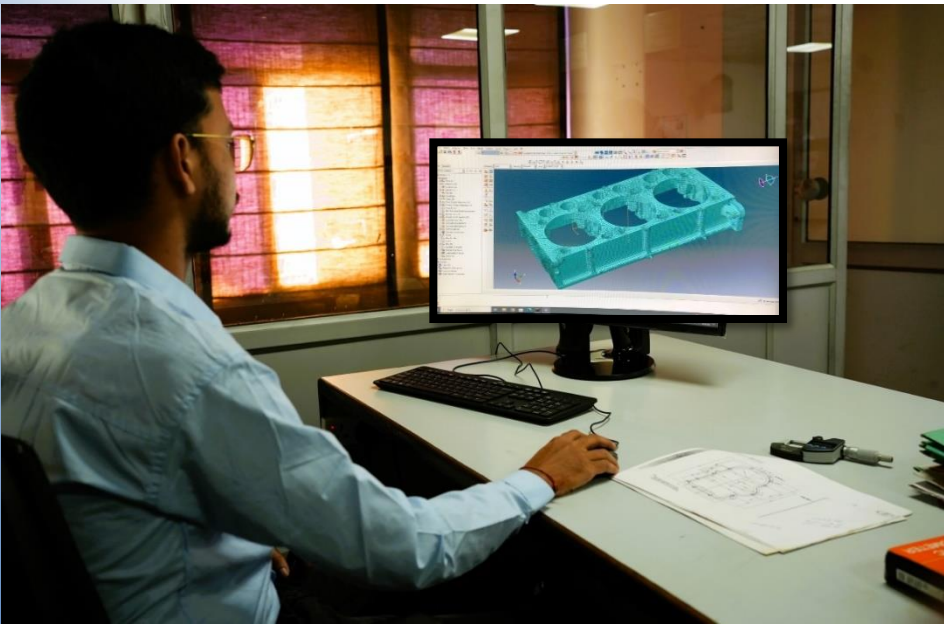
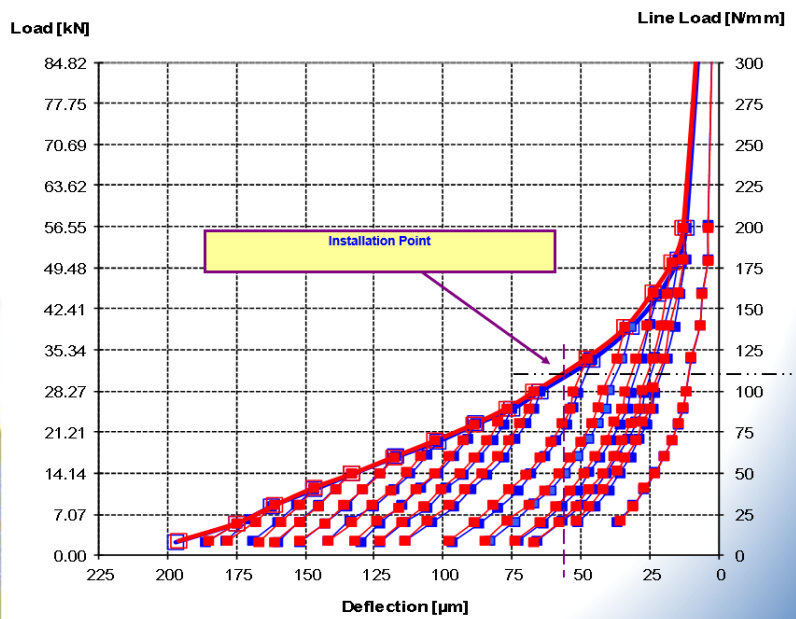
R&D



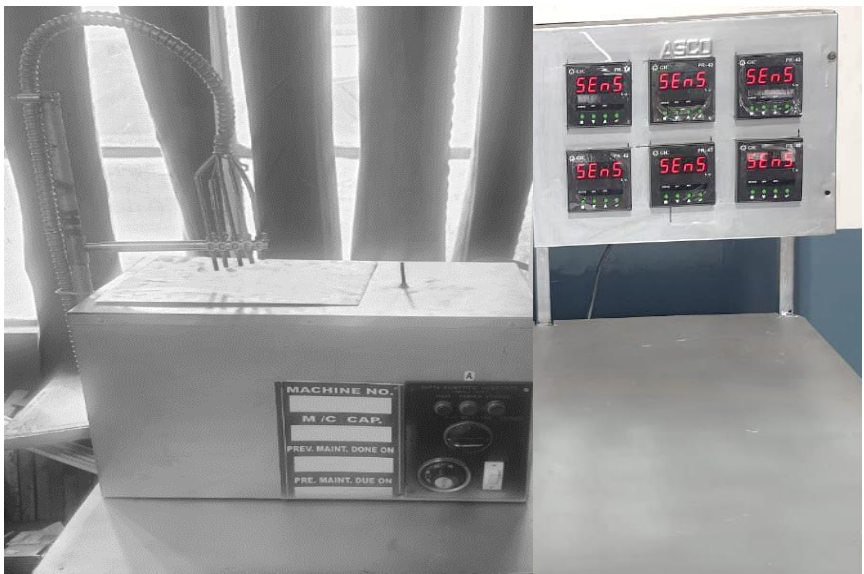
FUJI FILM TESTING



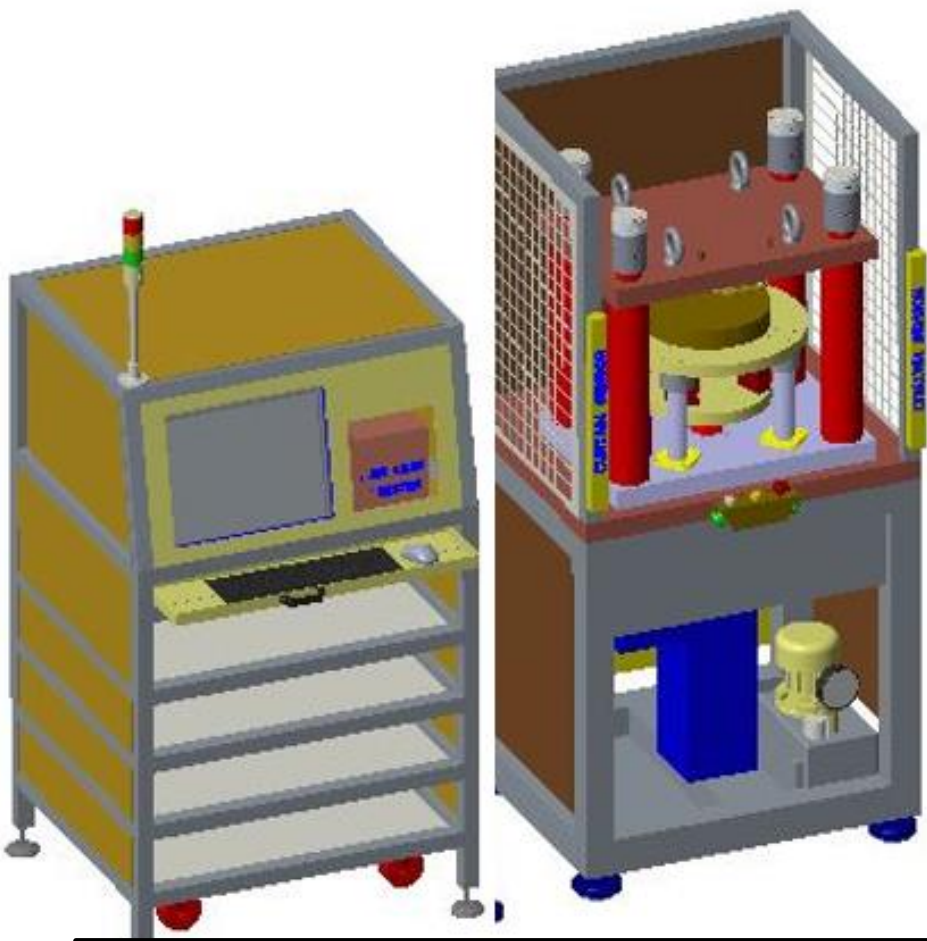
RUBBER MIXING LAB MILL



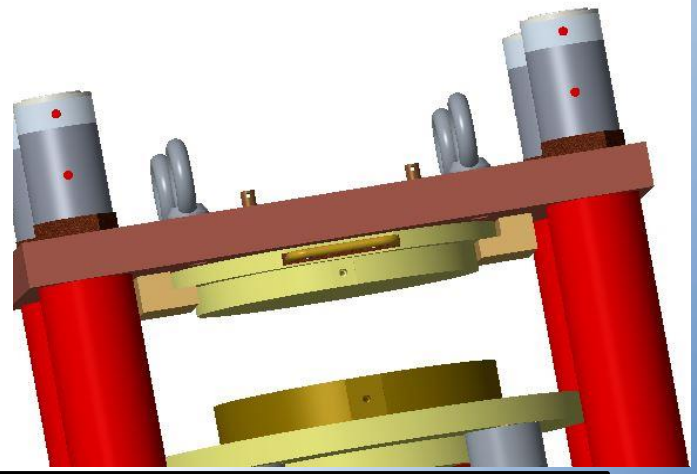
COMPUTER-AIDED ENGINEERING



THERMAL MAPPING MACHINE



LOAD DEFLECTION AND LEAK TESTING MACHINE





# TECHNOLOGICAL UPGRADATIONS IN THE LAST 3 YEARS



## TOOL ROOM



**CO2 LASER CUTTING MACHINE – 150 KW**



**SODICK CNC WIRE CUT EDM MACHINE**



# TECHNOLOGICAL UPGRADATIONS IN THE LAST 3 YEARS

## MANUFACTURING



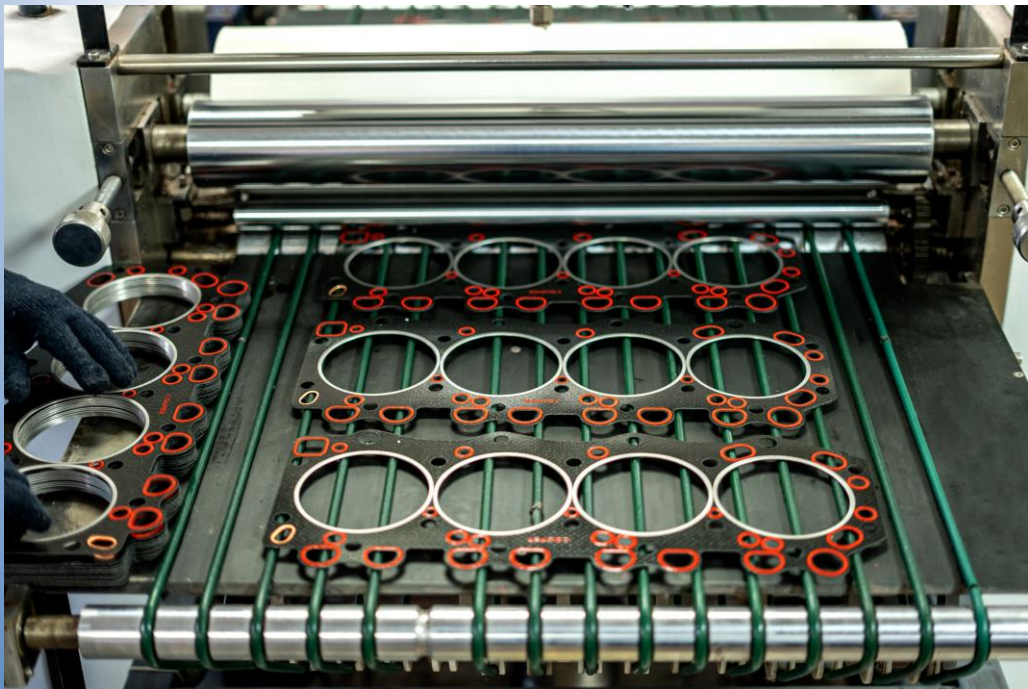
**SWING ARM PRESS**



**TRAVEL HEAD-CUTTING PRESS**



**Tung Yu 250 Ton Double Station**



**SURFACE TREATMENT**



**COPPER ANNEALING**



**14" X 36" MIXING MILL**



# TECHNOLOGICAL UPGRADATIONS IN THE LAST 3 YEARS



## Quality Assurance



**CARBON DISPERSION ANALYZER**



**MOVING DIE RHEOMETER**



**MAHR CONTOUR TRACER**



**UTM MACHINE  
SPECIALLY FOR RUBBER**

# TECHNOLOGICAL UPGRADATIONS IN THE LAST 3 YEARS



R&D Centre	
Design	Setting up of R&D center with a team skilled in CAD, virtual simulations (CAE), NPD
	Solid works Premium license
	Abaqus
R&D Lab	Load vs Deflection Machine
	Leak Testing Machine
	Thermal Mapping Machine
	Nitrogen Sealability Testing Machine
	Rubber Mixing Lab Mill - Modern

Tool Room	
Tool Manufacturing	Sodick Wire cut machine - Japan
Tool Design	Integration of Tool design with Product Design



# TECHNOLOGICAL UPGRADATIONS IN THE LAST 3 YEARS

Manufacturing	
Rubber	Tung Yu 250 Ton Double Station 3RT Vacuum compression moulding machine
	35 Ltrs. Kneader Machine
	14" X 36" Mixing Mill
SPM	Laser cutting machine CO2 for soft gaskets
Coating	Automated coating line
	HTRC Spray Paint Facility
MLS line	Hydraulic Press for MLS embossments
Secondary	Automatic Perforation machine
	Automated Power press line with feeder and decoiler
	Swing Arm Press
	Travel Head Press
	Graphite Exhaust Seal Ring Line

Quality	
Rubber Testing Lab	Setting up of Rubber test Lab- Rheometer, UTM, etc.
Measurements	Contour Tracer Machine Mahr- Germany



# Projected Investments



Projected investments in 2024-2025 for capacity enhancement and tool room capability :

- MLS line
- Rubber Injection Molding and compression molding machine
- VMC and Wire cut machine in the Tool Room
- CNC Travel Head Press
- Automated Rubber Batch Mixing

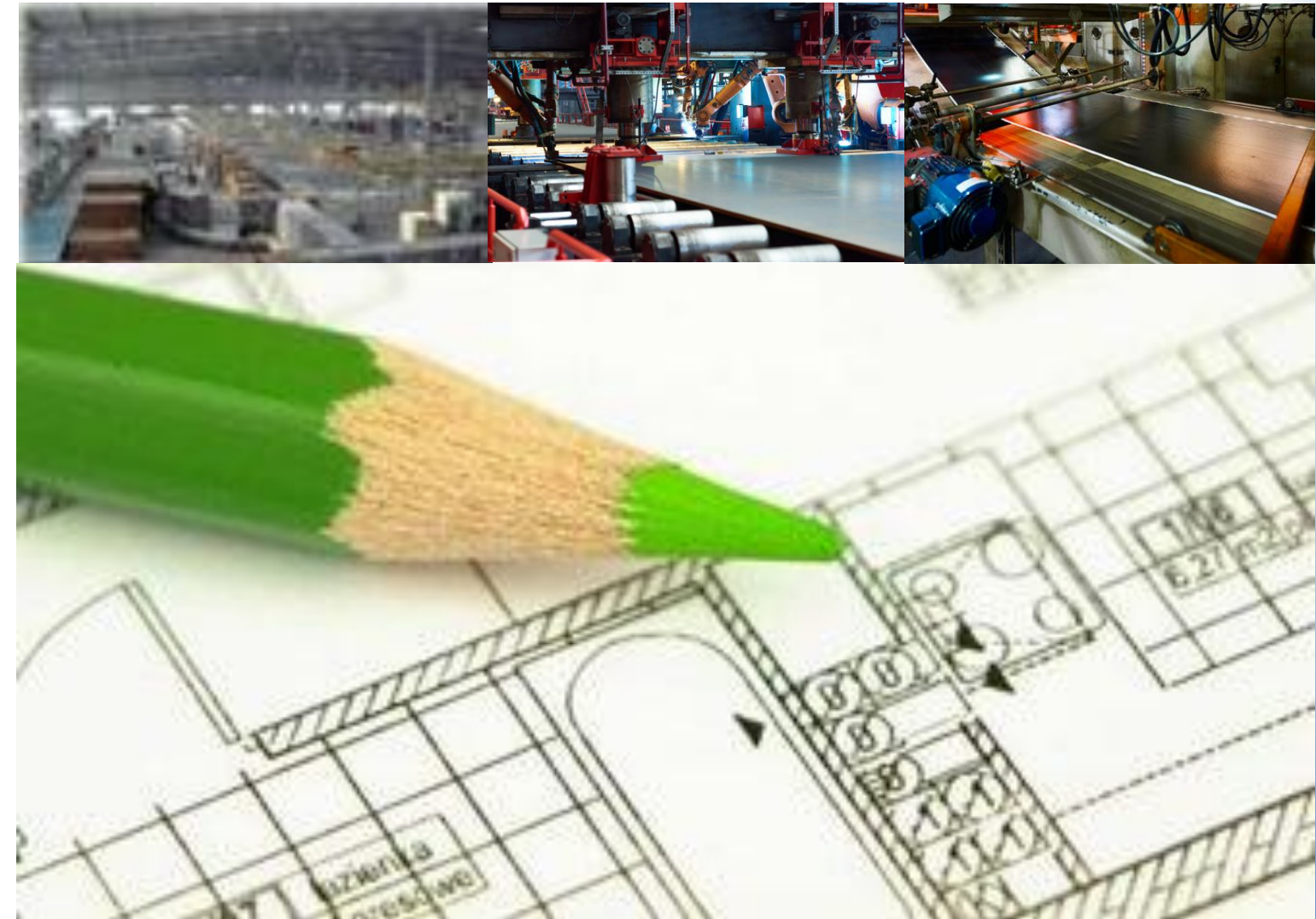


# NEW PLANT

**LOCATION:** VILLAGE JASHPUR, Haryana (13 KM FROM MAHINDRA, HANDESRA PLANT)

**PRODUCT RANGE:** GASKETS AND HEAT SHIELDS

**START OF PRODUCTION:** SECOND HALF OF 2025





# AWARDS



Best SCM Performance



Quality Award



Quality Performance



New Product Development 2018



Quality Performance



Supply Excellence 2017







We Thank You for supporting us and understand the value of your time. Further,  
we sincerely welcome you to discuss any inquiries that you have.

**Manav Batta**  
+91 9876200244

[info@cooperindia.com](mailto:info@cooperindia.com)

Ajay Pathania  
+91 8802594216

Vivek Sharma  
+91 9888756074

Amit Kumar  
+91 9910604280

# THANK YOU

*Contact us today for a partnership that stands the test of time.*