



OSKİM Otomotiv A.Ş

Kayapa/Bursa/Türkiye

www.oskim.com.tr



Established in the name of OSKIM in sheet metal forming

Tooling & Manufacturing 4.000 m²

Expanding testing capabilities

IATF 16949 Quality Certification

TÜBİTAK
TUBITAK R&D Project Approval

Industry-Industry Cooperation
URGE Project

%98 Export Rate

%30 Export Rate

1996

1999

2005

2007

2009

2014

2015

2018

2020

2023

First plant OSKIM Inc.



Expanding International Business Network



First International OE Project



Railway Project
B2B Projects



New Production Plant 10.000 m²



University-Industry Cooperation
Certificated R&D Center



OSKIM Company Profile with Numbers

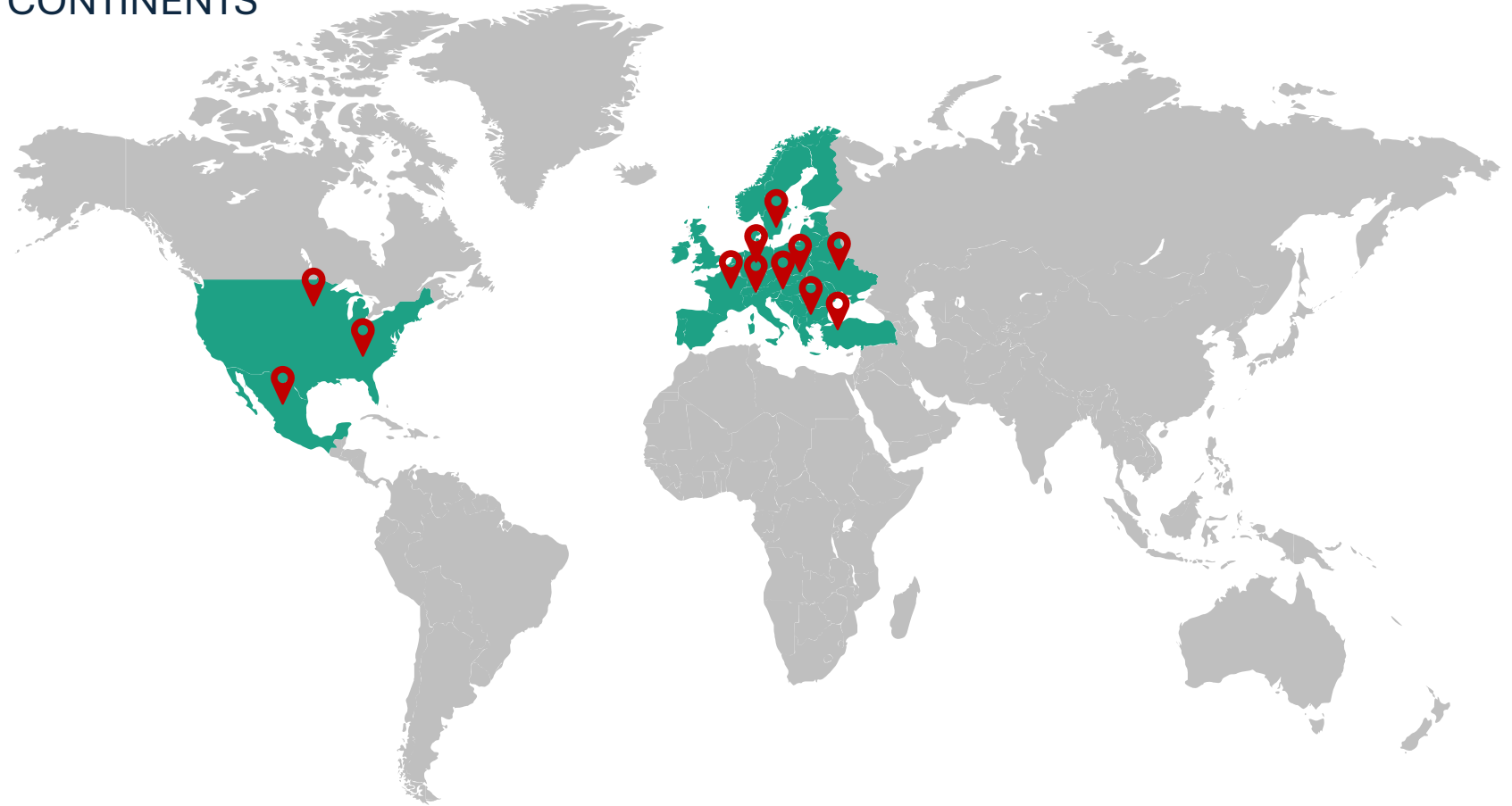
- ▷ 10.000 m² production plant in Bursa
- ▷ %98 Export Rate
- ▷ %97 Automotive
- ▷ %3 Industrial Projects
- ▷ Tooling Design & Production
- ▷ Assembly & Testing System Design & Production
- ▷ 100+ Employees 20+ Engineers



GLOBAL OSKIM FOOTPRINT

EXPORT 14 COUNTRIES OF 3 CONTINENTS

**98 %
EXPORT**



+30 BRANDS +250 Vehicle Model +2000 REFERENCE IN RANGE

Product Groups



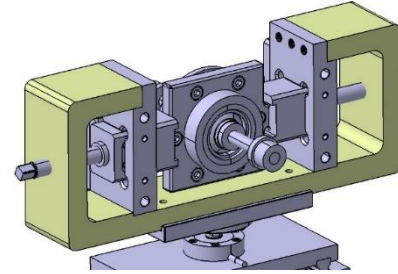
Automotive Passenger Cars & LCV

- Control Arm
- Ball Joint
- Silent Block & Bush
- Rear Axle Arm
- Shock Absorber Sub-components



Railway and Truck Projects

- Bogie
- Bushing
- Linkage Parts



Industrial Projects

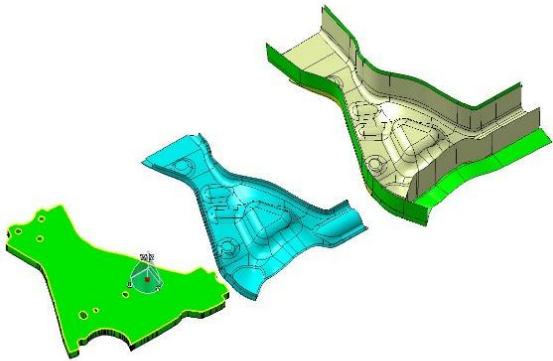
- Electrical Vehicle Projects
- Stamped & Welded Parts
- Test Equipments
- Welding Fixtures
- Sheet Metal Toolings
- Rubber to Metal Toolings



Technical Capabilities

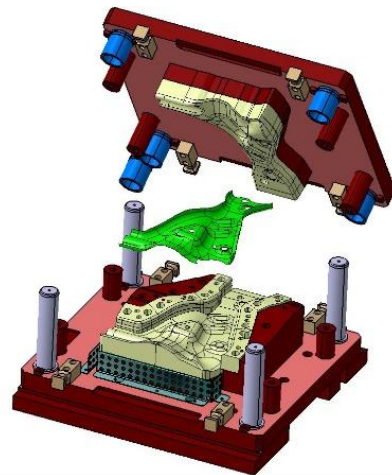
Process

- Laser Cutting
- Stamping
- Welding Technologies
- Rubber to Metal



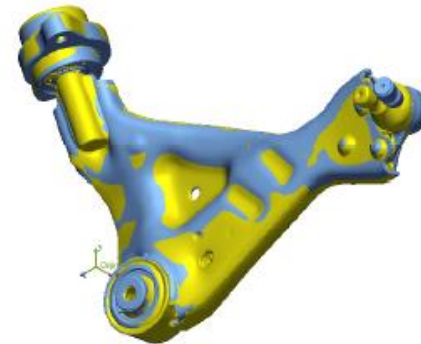
Design & Co-Design

- Reverse Engineering
- Surface
- Product
- Processes
- Tooling
- Special Machine
- Test Equipment



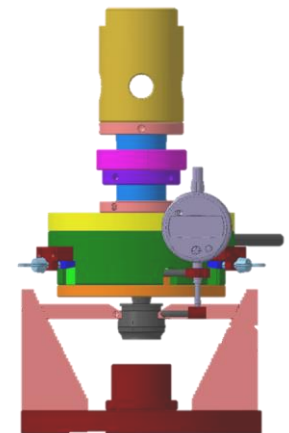
Engineering Tools

- Catia V5 (4 License)
- Geomagic Design X
- Geomagic Control X
- Artec 3D
- Finite Element Analysis
- Ansys Mechanical Premium
- Ansys Forming Pro
- Ansys Discovery Modeling

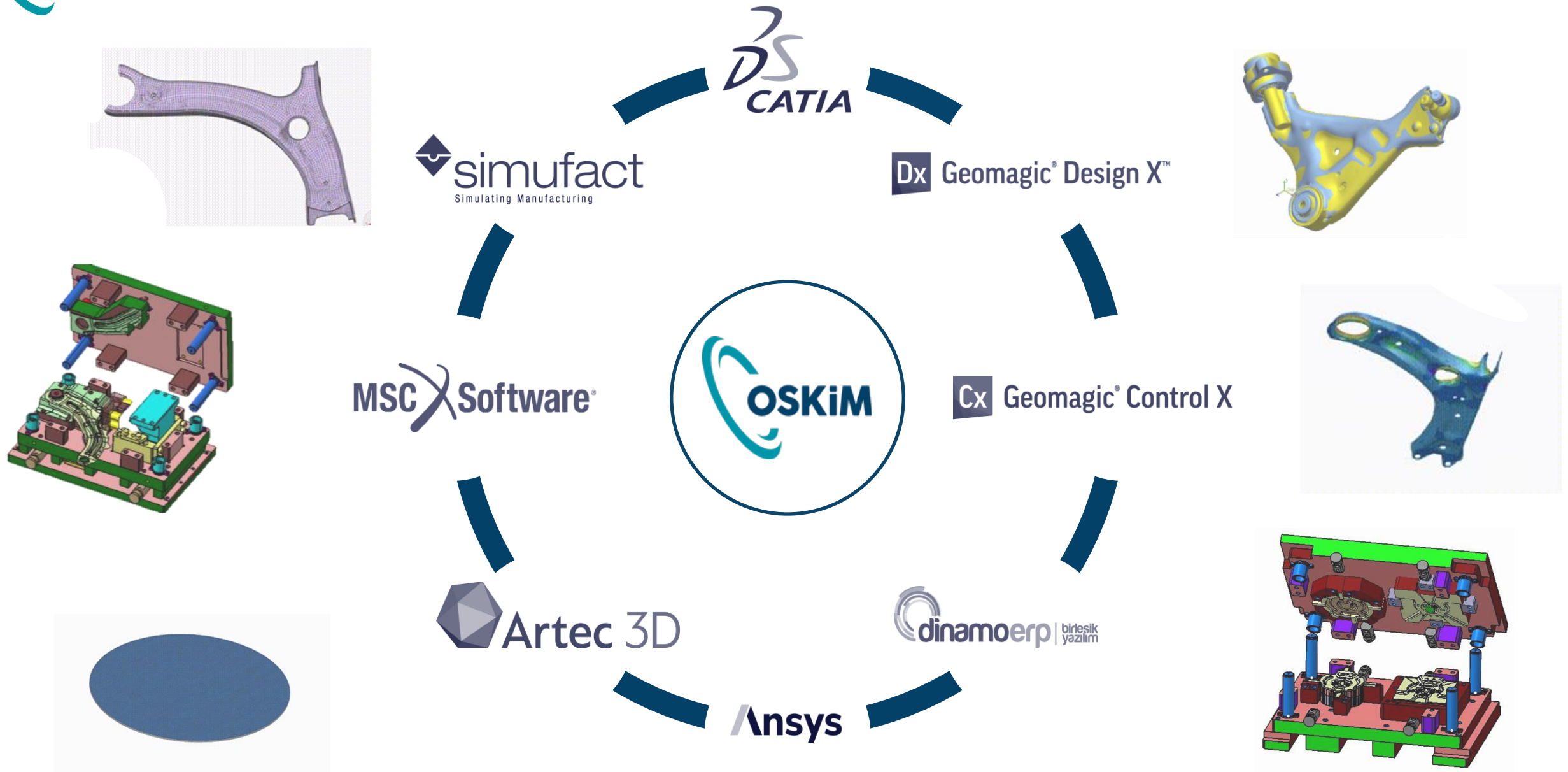


Verification & Test

- 3D Scanning
- Pull Out
- Push Out
- Comparison
- CMM
- Dynamic life cycle
- Welding penetration
- Rubber to metal adhesion
- Metallographic Analysis



Technical Capabilities via Software





Forming & Deep Drawing



www.oskimautomotive.com



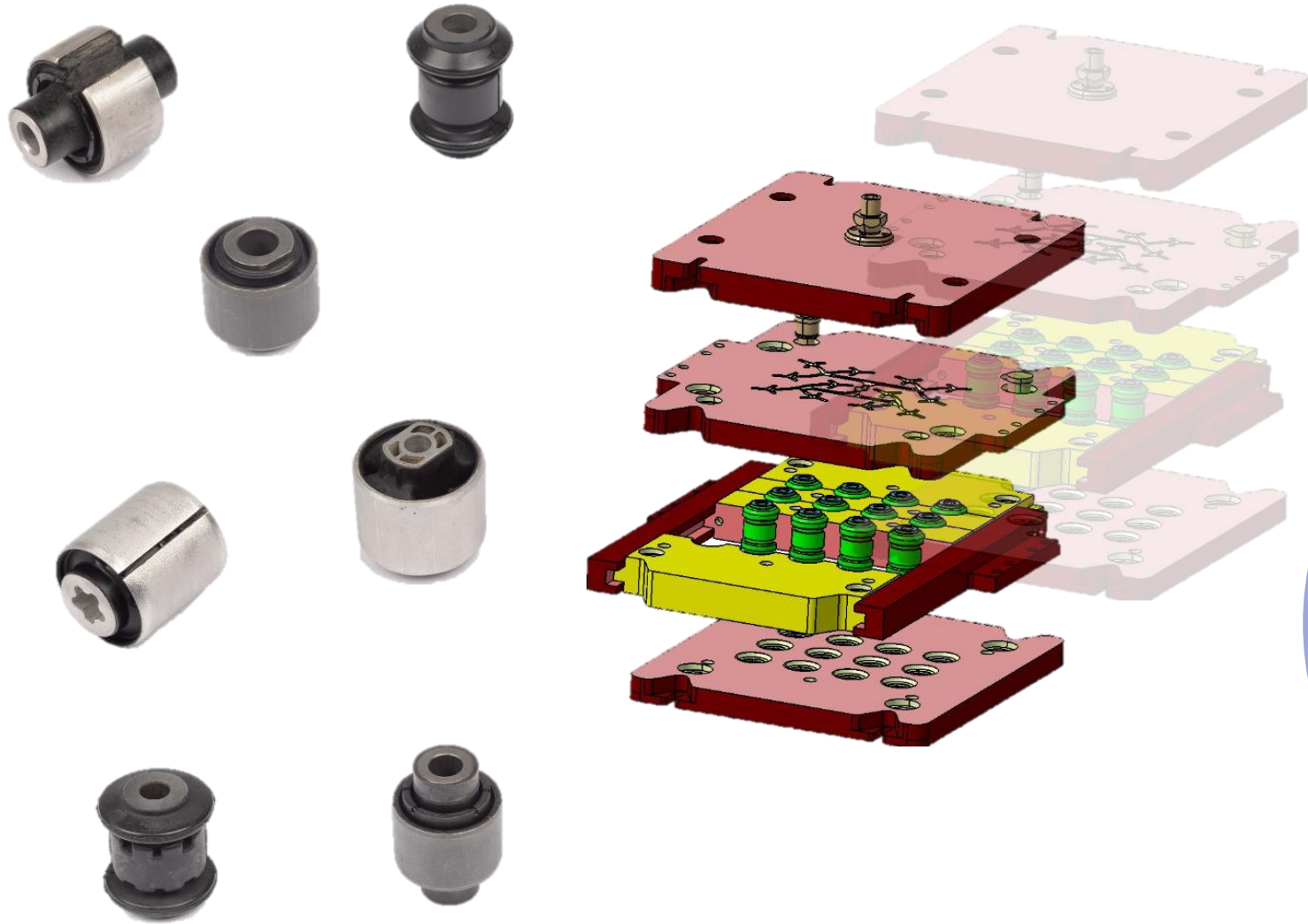
Welding Technologies



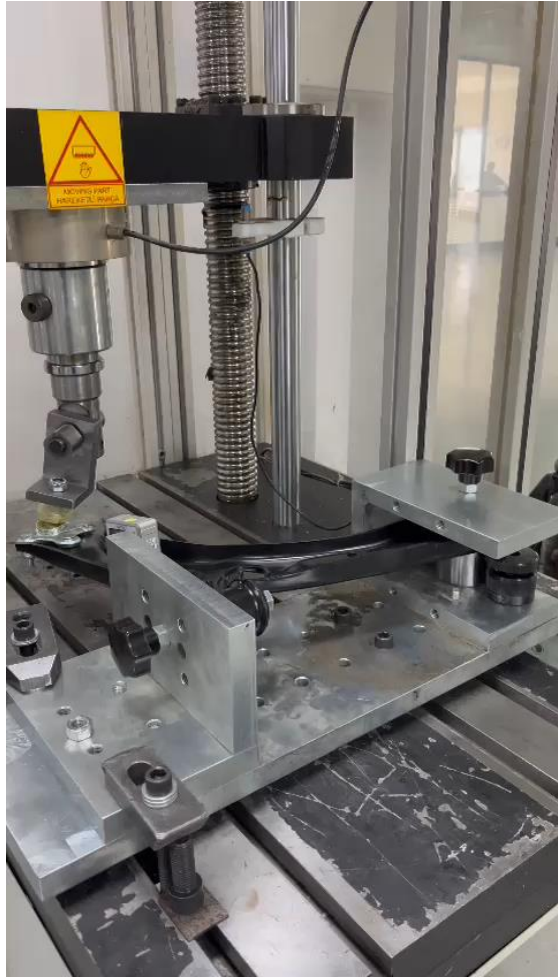
CNC Machining & Milling Applications



Rubber to Metal Technologies



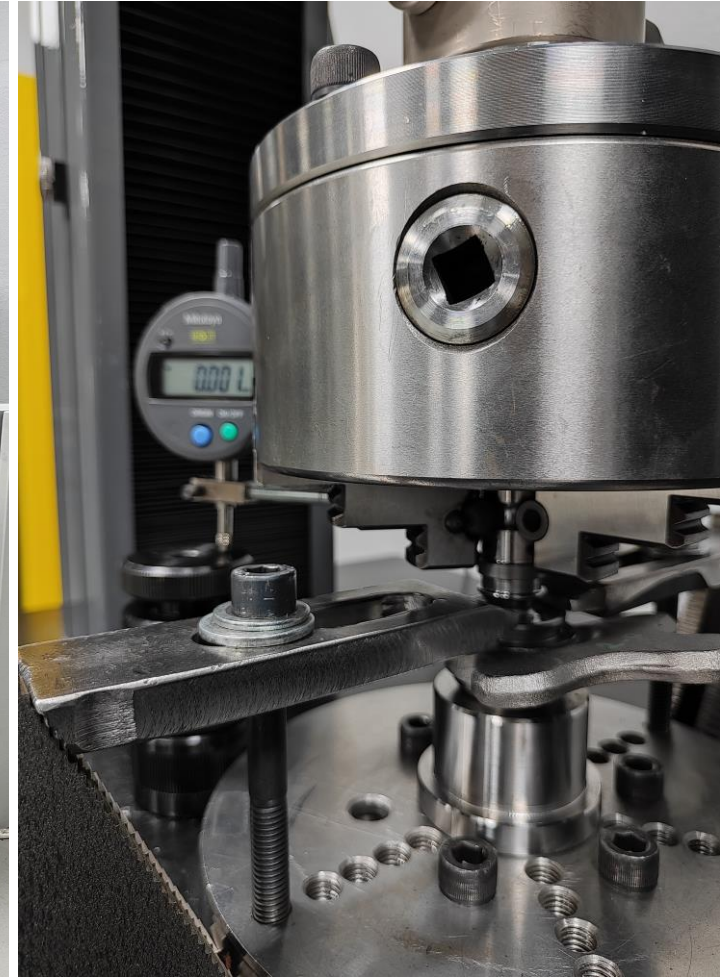
Static & Dynamic Testing Laboratory



Sheet Metal Lifecycle Test System



Bearing Lifecycle Test System



Ball Joint Spring Travel Test System



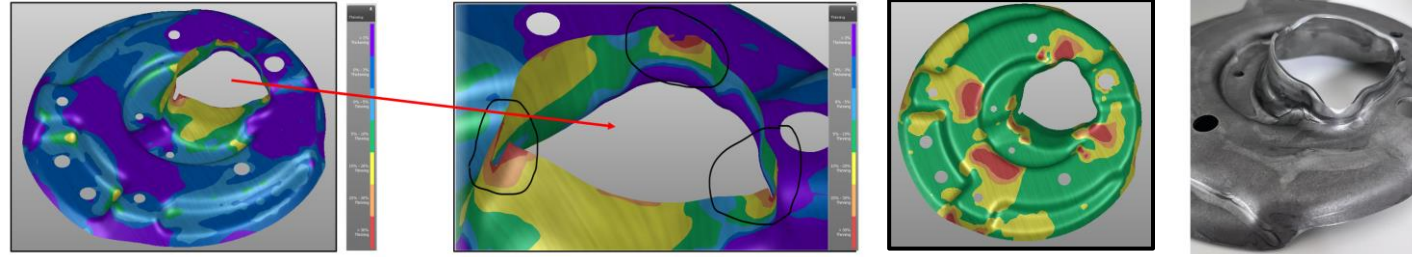
T.C. SANAYİ VE
TEKNOLOJİ BAKANLIĞI



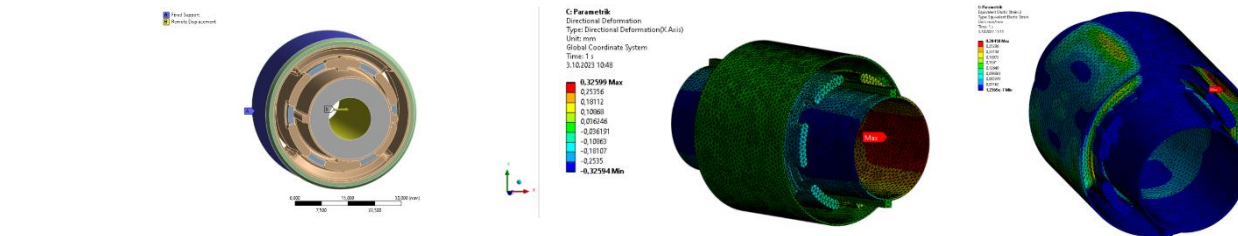
As a part of changing world and industry, we adopt research and development as a culture and work to take this culture one step further for a long while. Today, we are celebrating the reward of our efforts as an R&D Center approved by the Republic Of Türkiye Ministry of Industry and Technology.

We congratulate our teammates for their contributions!

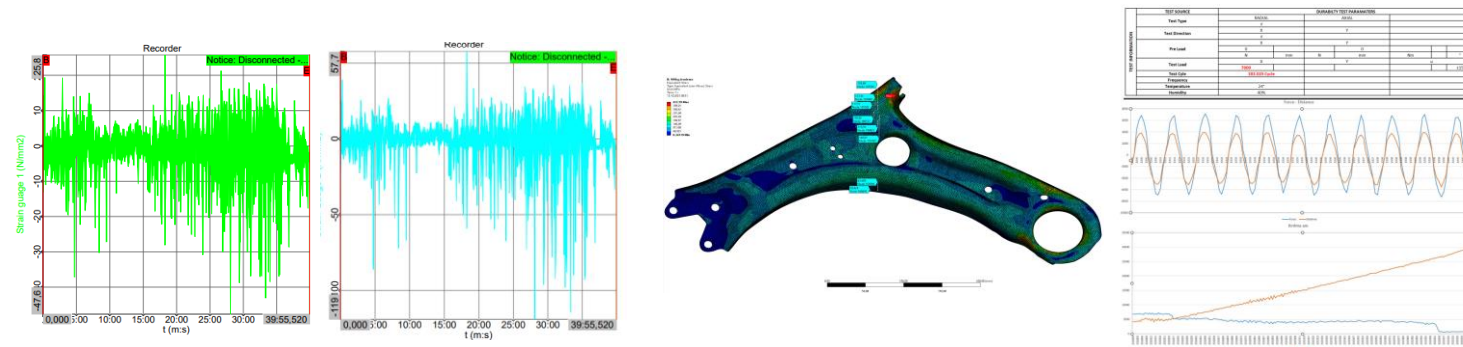
2023-2024 Academic Scorecard



PROCESS OPTIMIZATION OF SPRING SEET PRODUCED BY USING HIGH STRENGTH LOW ALLOY STEELS



FORM OPTIMIZATION OF REAR CONTROL ARM BUSHINGS BY USING FINITE ELEMENTS METHODS



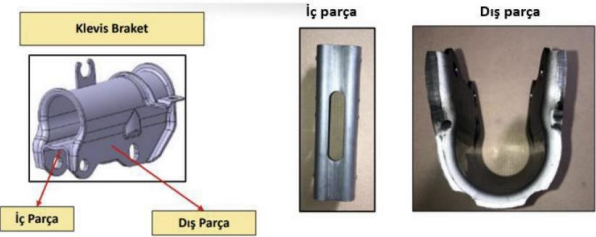
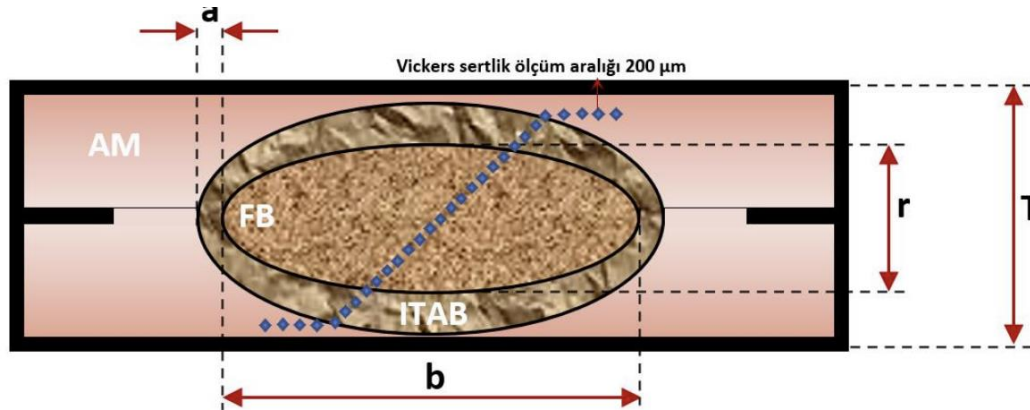
DATA COLLECTION AND FATIGUE LIFE ANALYSIS OF L GEOMETRY SINGLE SHEET FRONT CONTROL ARM



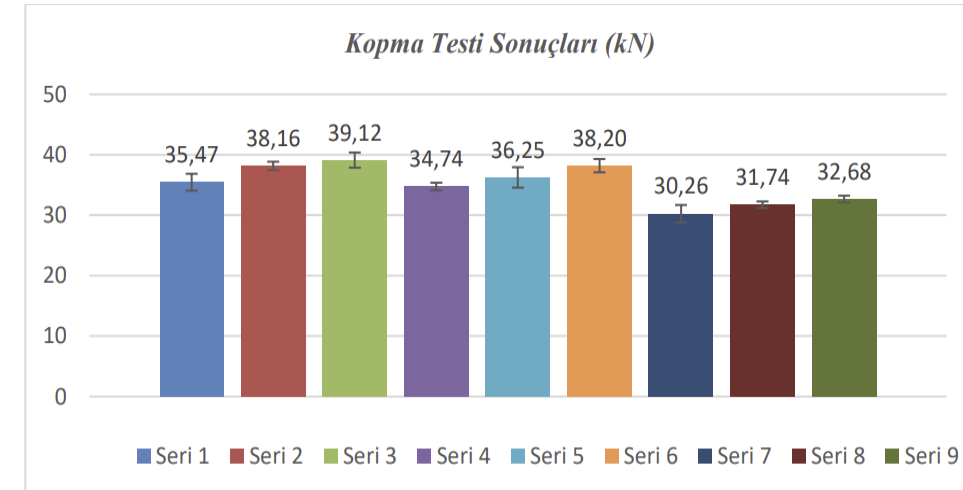
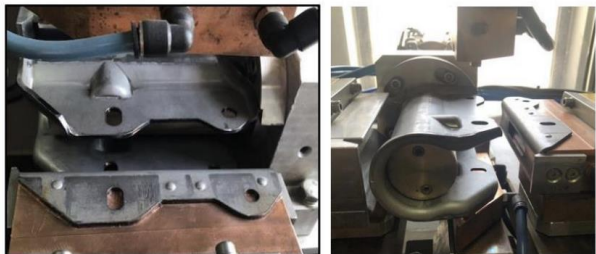
2023 Academic Papers

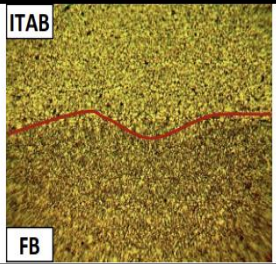

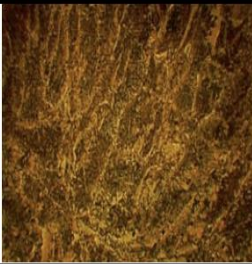
ULUDAĞ UNIVERSITY – FACULTY OF ENGINEERING JOURNAL

THE EFFECT OF PROJECTION WELDING PARAMETERS ON PERFORMANCE OF S355MC SHOCK ABSORBER



Şekil 1
Amortisör grubunda yer alan Klevis Braket yapısı



Numune No	ITAB/FB	FB	ÇB
N1			

2023 Outlook-Achivements

R&D Center

3 Patent Application
2 Technical Paper
7 Academic Presentation
3 R&D Project


Capacity Investment

Rubber to Metal +%50
Cold Forming +%30
Welding Technologies +%20

B2B Collaboration



VW Group S-Rating Results



CONFIDENTIAL
VERTRAULICH

ihub KBP Help

KBP mode NB

All Documents
Supplier 360®

OSKIM OTOMOTIV SANAYI VE TICARET ANONIM SIRKETI
B2B Status: New

Single company | 56-621-3204

S-RATING AND CERTIFICATES
PROFILE
DOCUMENTS
TASKS AND MESSAGES

S-RATING

Company rating
10-99 employees

B B-Rating, Positive rating, minimum requirements fulfilled

SAQ Self-Assessment Questionnaire
Version SAQ 5.0

SAQ status: Completed
Valid until 2026-08-22
73% scored
Minimum requirements fulfilled

[Further S-Rating Information](#)

CERTIFICATES

IATF 16949
Valid until 2025-09-24

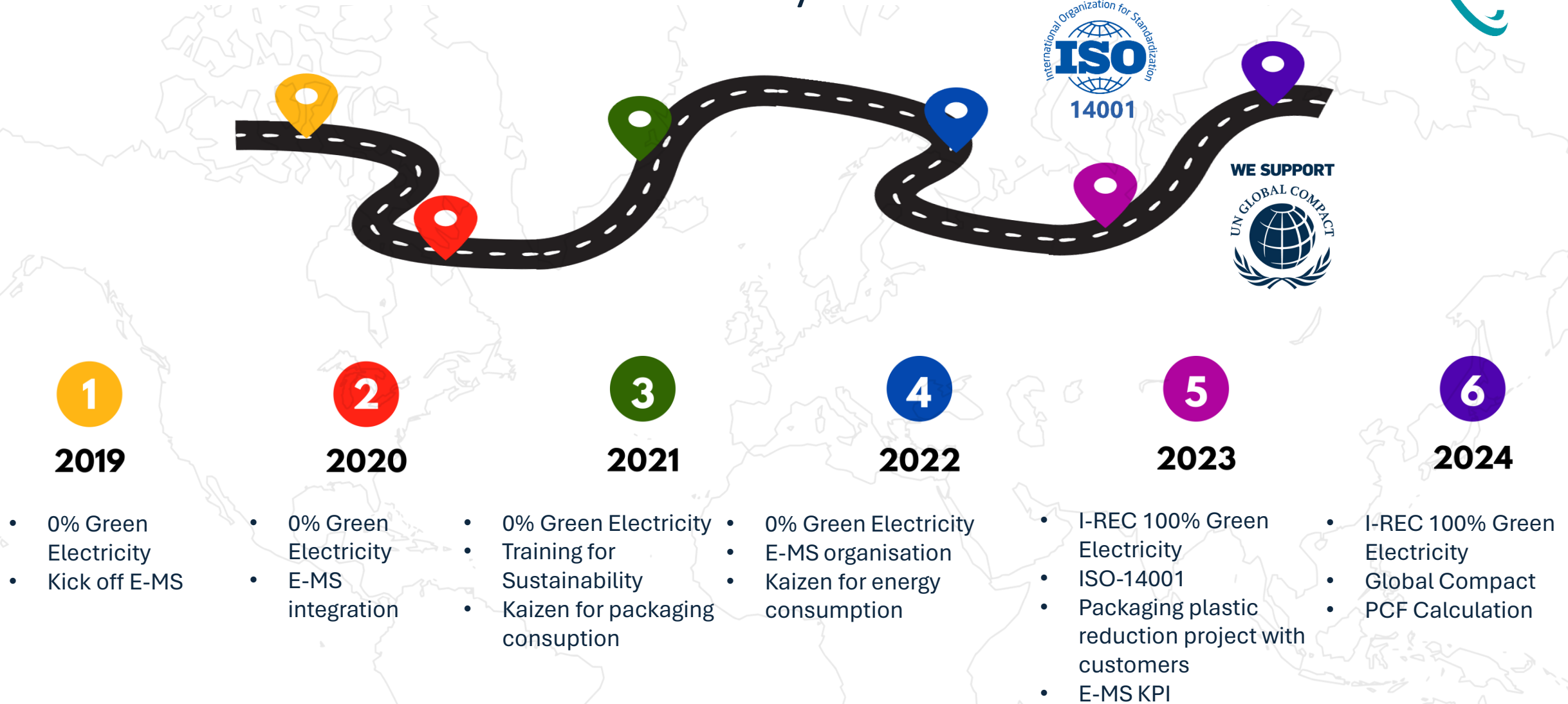
DIN/EN/ISO 9001
Quality Management System
Valid until 2025-09-24

DIN/EN/ISO 14001
Environmental Management System
Valid until 2026-08-22

The background of the slide is an aerial photograph of a two-lane asphalt road winding through a dense forest. The trees are in various shades of green and yellow, suggesting an autumn setting. A white truck is visible on the road, moving away from the viewer. The road has white lane markings and a shoulder on the right side.

Future Strategy & Roadmap

Sustainability Timetable



Sustainability Roadmap



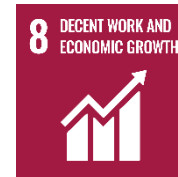
Environment



Social



Economy and Management



For the future, we invest in institutionalization, people and society, responsible production and responsible consumption, innovation and innovation, and prioritize these issues. We directly contribute to 13 of the United Nations Sustainable Development Goals with the issues we prioritize.

Sustainability Roadmap



Sustainability Priorities Table

Production and Consumption	People and Culture	Corporate Management and Sustainable Approach	Economy, Innovation and Proactivity
<ul style="list-style-type: none">•Water Consumption•Energy Consumption•Efficiency Applications•Waste Management•Sustainable Supply Chain	<ul style="list-style-type: none">•OHS (Health and Safety)•Social Activities and Workplace•Social Gender Equality•Support for Education•Talent and Loyalty Management•Ethical Approach	<ul style="list-style-type: none">•Corporate Management Applications•Risk Management•Internal Audits	<ul style="list-style-type: none">•Operational Excellence•R&D Projects•Digital Transformation•Solution Partner for E-mobility

dynaress

MOTION ON DEMAND



Dynaress is an OSKIM Brand which produce Customized
Assembly Line, Testing & Engineering Solutions



**Supply productivity
solutions as a result of 30
years manufacturing
experience.**



Dynaress Business Model



Customized Machinery

- Rolling, Riveting, and Assembly Systems
- Static Test Machines
- Dynamic Test Machines



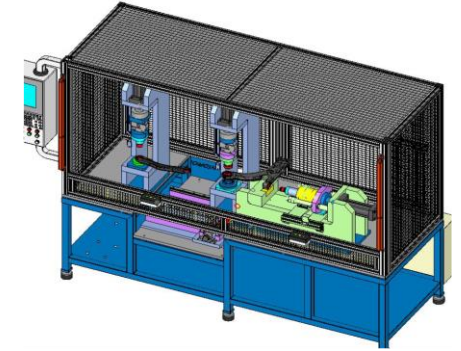
SMED Solutions & Quick Couplers

- Hydraulic Mold Clamping Systems
- Die Changing Consoles



Sheet Metal, Rubber to Metal Tools & Fixtures

- Deep Drawing Dies
- Bushing Vulcanization Molds
- Pneumatic Welding Fixtures



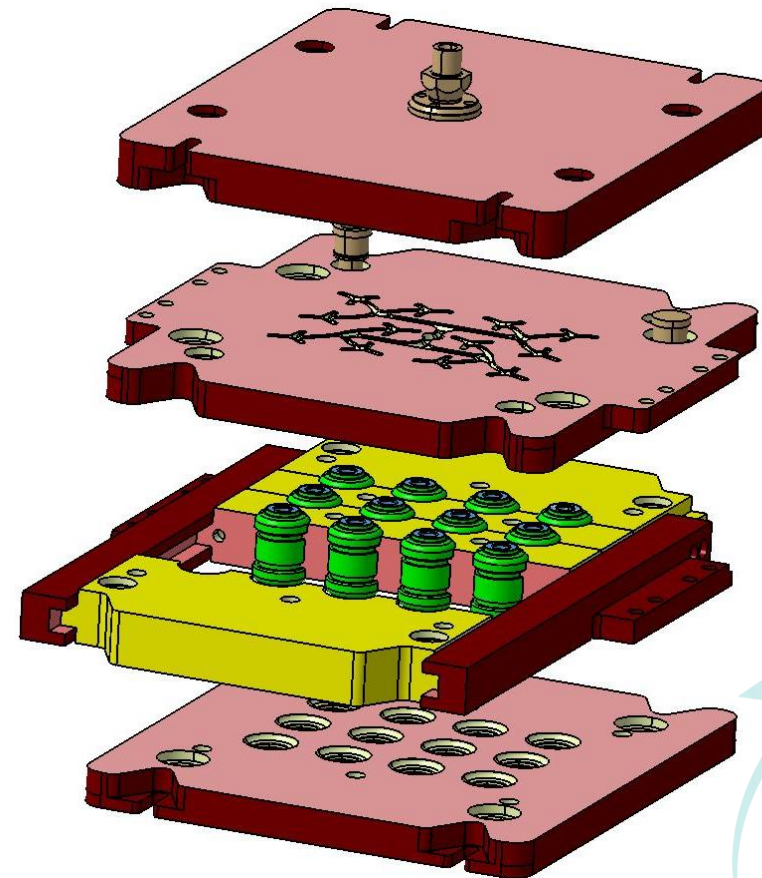
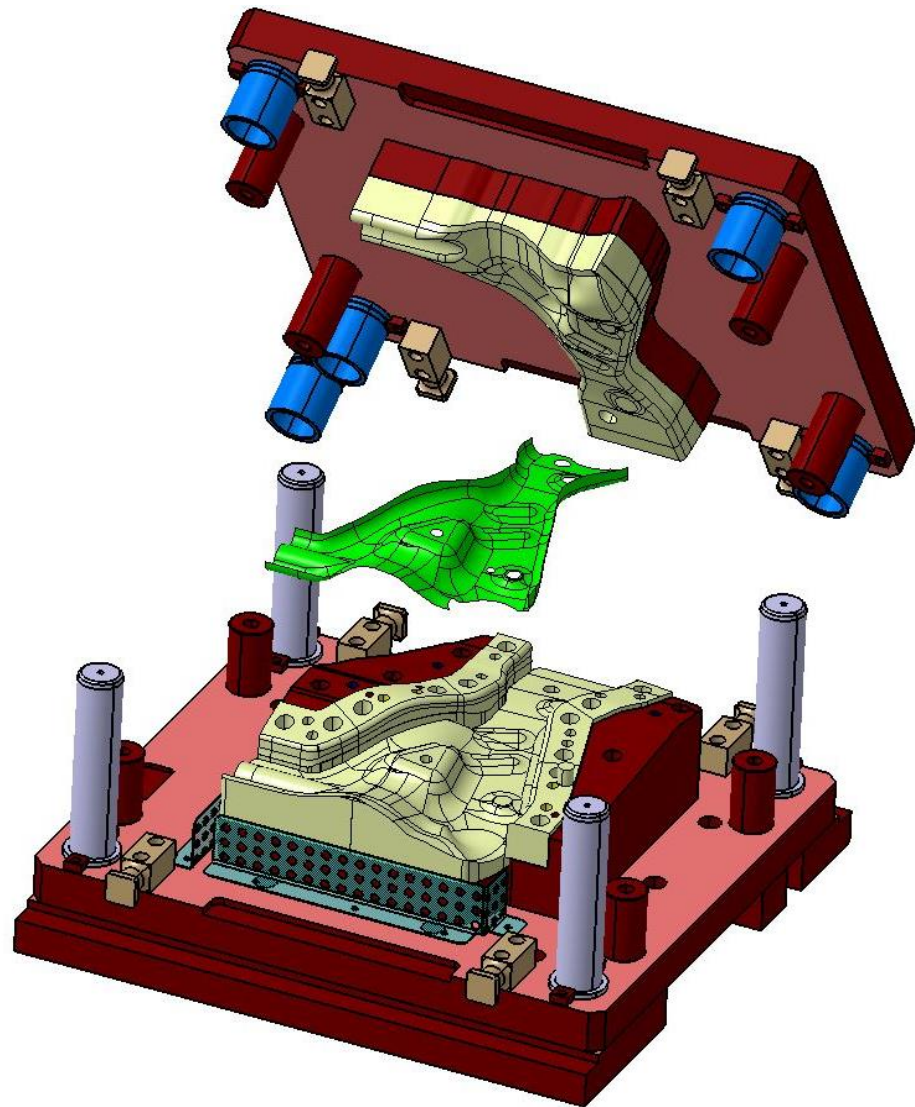
Customized Assembly Lines

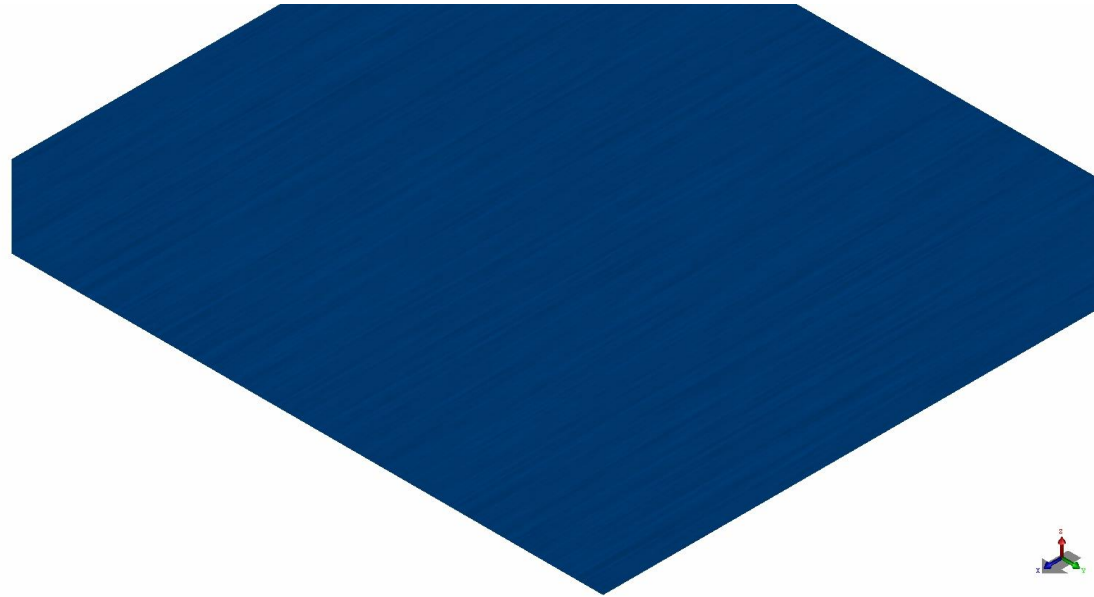
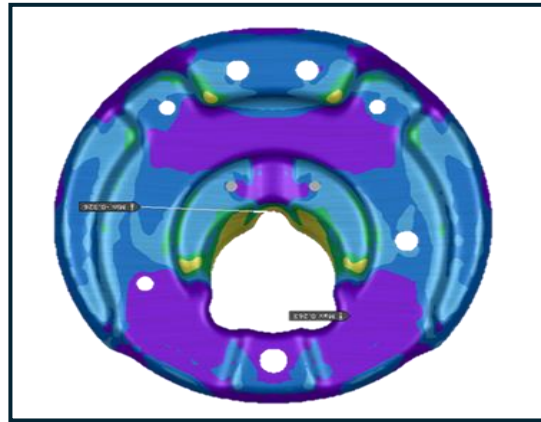
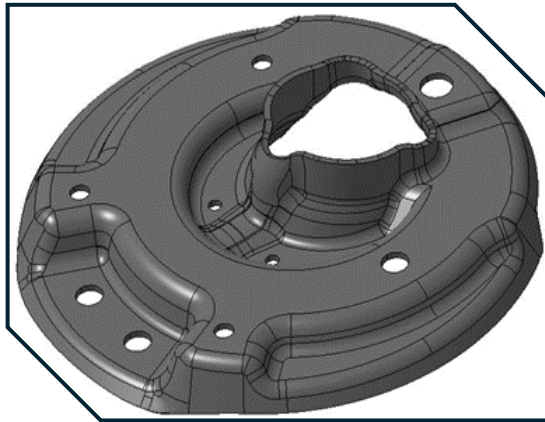
- Product Specific Machines
- Customized Process Optimization

- ➡ High Automation level with MES & ERP integration
- ➡ Single Minute Tooling Change
- ➡ Efficiency in low quantity production
- ➡ No dependency on person and/or co-robot integration
- ➡ Low Carbon Footprint



Customized Productivity Solutions





Thank You

