







GM AUTOMOTIVE  
S.r.l.

Your Spare Parts,  
Our Experience

**AUTOMOTIVE** *since 1927*



# ABOUSTUS

- 1927: Mario Ghibaudi starts the production of starter drives and cv joints. Set up 
- 1960: strategic decision to produce starter drives and pinions only .
- 1967: opening historical site in Turin of 4000 sqm .
- 1970: opening GHIBAUDI FRANCE.
- 1980: opening GHIBAUDI SPAIN.
- 1990: associated to APRA.
- 1997: certification ISO 9001 .
- 2000: warehouse increases from 4000 sqm to 6000 sqm .
- 2001: certification ISO 14001 .
- 2007: setting off the ignition coils range .
- 2008: acquiring Elauto and new lines as brushes, regulators and glow plugs .
- 2009: moving to new location in Alpignano in an area of 10.000 sqm
- 2010: acquiring Cosma and starts solenoids production .
- 2012: setting off the steering columns witches and steering suspension parts range.
- 2013: setting off the starter motors and alternators range .
- 2014: setting off the fuel pumps range and setting up the product divisions
- 2015: starting production of rotors, stators, armatures, field coils 
- 2018: in collaboration with ETP Europe setting off turbocharger range under brand Get Start
- 2021: we are on TEC DOC 
- 2024: Recognition of the historic brand 





## VISION

Become leader in the distribution of electrical spare parts for vehicles always supplying products "high quality".



## MISSION

We help customers to develop their business by providing reliable and high quality products, continuously increasing our range (standard, innovative, service), and facilitating their resale to their customers.



## VALUES

We always recognize ourselves in these values:

- Quality: ISO 9001 e ISO14001
- Service: meet needs of our customers.

# To Our Members, Who we are





Friendly



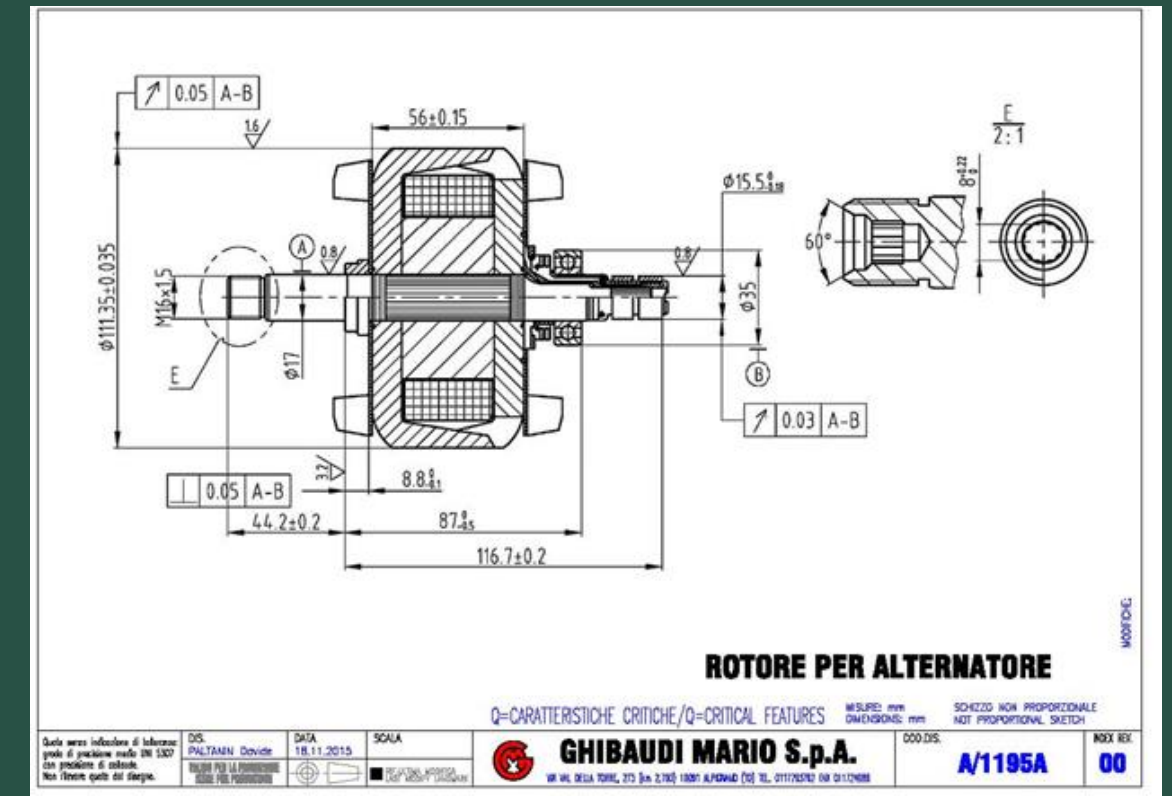
Environment

AUTOMOTIVE *since 1927*



# Design

good design







# Raw

# Materials

The raw materials are carefully chosen and purchased under rigorous quality control systems.

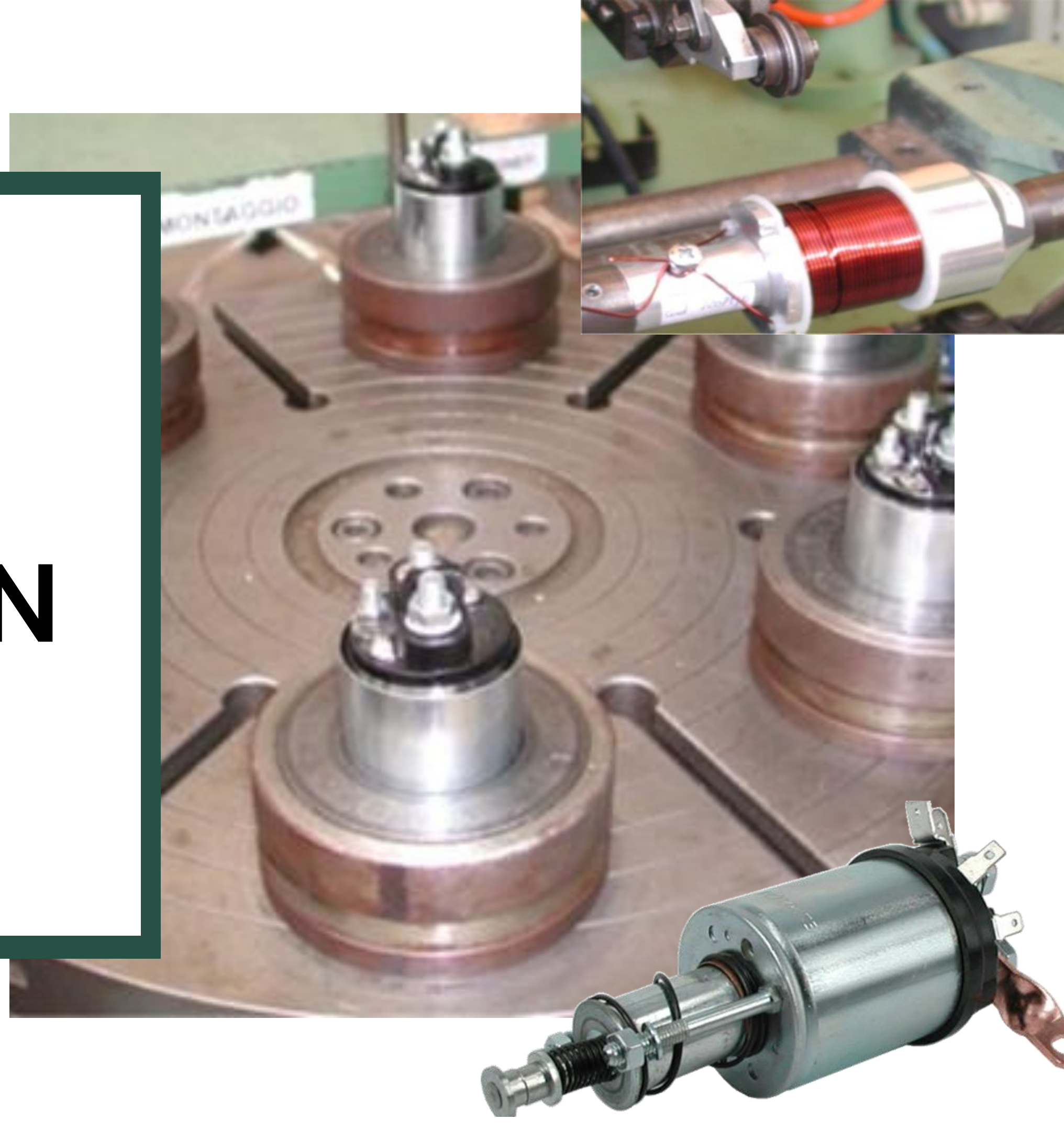




# STARTER DRIVE PRODUCTION

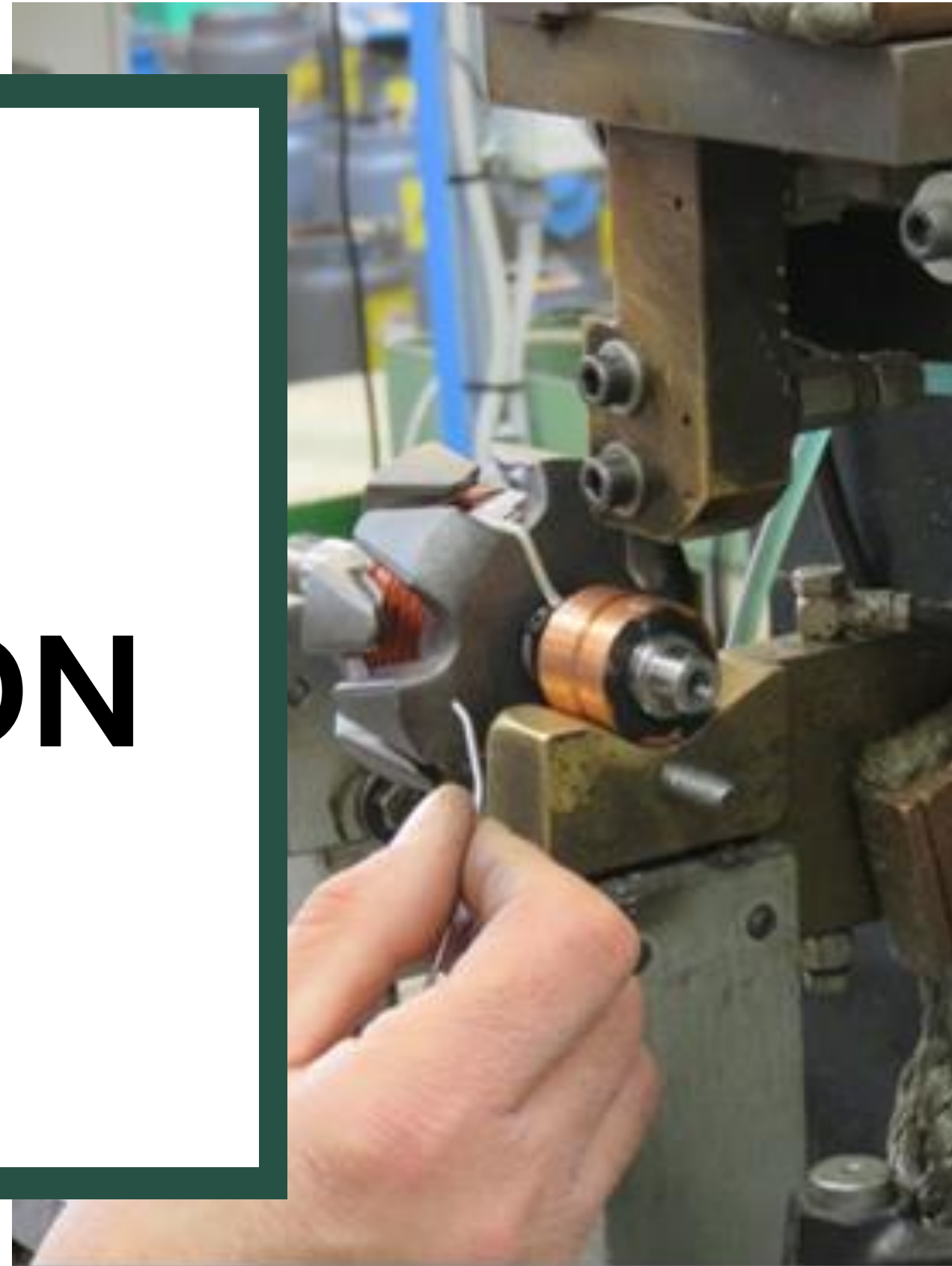


# SOLENOID PRODUCTION





# ROTOR PRODUCTION





# STARTERS AND ALTERNATORS





01



# Labelling

03



02

Mobile Tyre Fitting



Wheel Alignment



# PRODUCT DIVISIONS



STARTER DRIVES



SOLENOIDS SWITCHES



ROTORS, STATORS, ARMATURES, FIELD COILS



BRUSHES AND BRUSH-HOLDERS



ALTERNATOR PULLEYS



STARTERS, ALTERNATORS



STARTER DRIVE AND SOLENOID COMPONENTS



REGULATORS AND RECTIFIERS



ALTERNATOR BEARINGS



ALTERNATOR COVERS



# 96 YEARS

1927

1950

1960

1990

2006

2021

2024



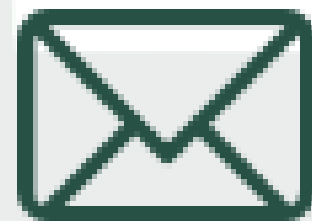
Since 1927 supplying quality and know-how in electric spare parts



# FOLLOW US



[www.ghibaudi.com](http://www.ghibaudi.com)



[info@ghibaudi.com](mailto:info@ghibaudi.com)



[@gmautomotive](https://www.linkedin.com/company/gmautomotive)



[@gmautomotive](https://www.facebook.com/gmautomotive)