



www.stucchi.net



DUST EXTRACTION & ENERGY DISTRIBUTION



Stucchi 1950



Where it all began...
Via Arcisate 15, Milan,
historical property of the
Stucchi family, and current
registered office of Stucchi
1950 Srl.

1950



Marino Stucchi
In the early '90s, the com-
pany specialized in the
design and production of in-
dustrial extractors, creating
a network of customers still
strong and lasting.

1990



The story continues
The Stucchi 1950 brand is
consolidated and new
products are designed in the
current operating office lo-
cated in via Monte Bisbino 24,
Baranzate (Milan).

Today

1953

Amerigo Stucchi
Amerigo's garage is the sym-
bol of his early works, a sac-
red place where he carried on
his passion for mechanics.



2012

Sara Stucchi
Marino's daughter, inherits
and develops the family busi-
ness tradition. The company
grows and explores new in-
ternational markets.



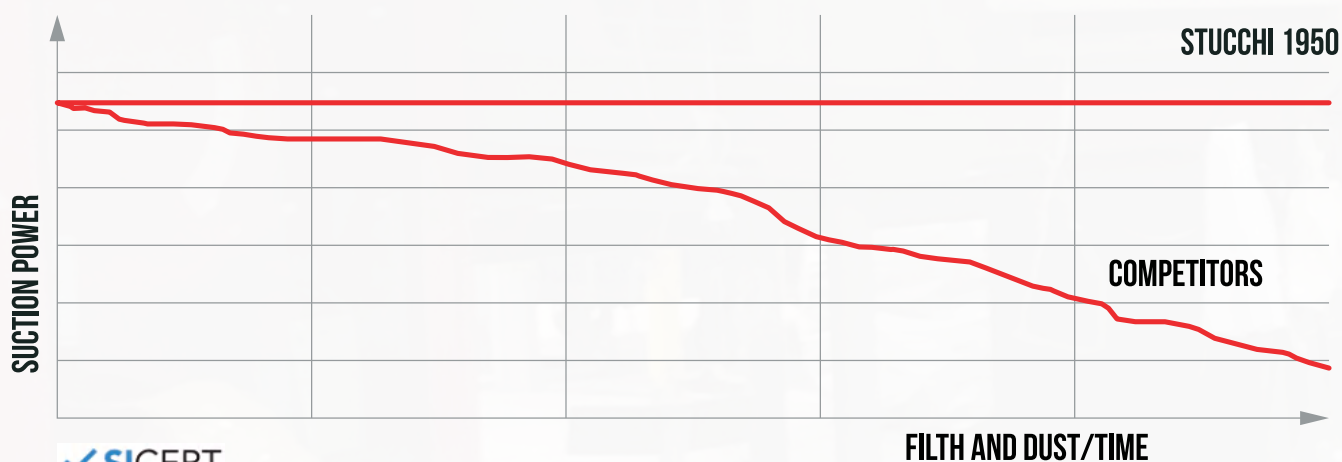
**Experience, efficiency, reliability and constant cooperation.
All this is Stucchi 1950.**

We are not only suppliers, you will find real colleagues in us; we support our customers throughout the production process: from the beginning of the project to the perfect conclusion.

The relationships we have with customers are based on three interconnected features: humaneness, skills and reliability. Companies are made up of people and we consider it essential to relate to others with respect and honesty; technical competence goes hand in hand with this approach and this translates into reliable products and constant customer care.

Design and realisation

WORKING EFFICIENCY AND SUCTION POWER



We guarantee the filtering system for 5 years, as you can find in our operation and maintenance manual, in the face of a high-quality mechanical technology.

The heart of a vacuum cleaner is not the motor, is the filter. This is the reason why Stucchi 1950 decided to ensure their complete efficiency in order to offer perfectly working machines also after 20-25 years.

We are addressing to **car bodyshops, carpenter shops, mechanic industry** (metal workers and repair shops) and to the **marine industry** (shipyards, yacht producers and vessels maintenance).

Our strength, in addition to the suction power, is given by the solid and executive design, as a result of a long planning experience.

The **research and development department** – respecting a fast process – studies the idea, projects and actualizes it costuming solutions ad hoc, respecting costumers' needs and requirements



www.stucchi.net



Stucchi 1950

Dust range catalogue

#INDEX

DUST EXTRACTION

MOBILE, INDEPENDENT, ATEX EXTRACTORS AND CENTRAL EXTRACTION SYSTEMS

PAG. 6



ENERGY DISTRIBUTION

MULTIPURPOSE TERMINALS, ARTICULATED ARMS AND SLIDING BINARY SYSTEM

PAG. 26



SUCTION BENCHES

INDEPENDENT AND ERGONOMIC BENCHES WITH DUST EXTRACTION INTEGRATED

PAG. 38



Dust Extraction



Mobile extractors

Extractors for wall installation

Independent extractors

Central extraction systems

ATEX extractors

Mobile extractors

Our mobile extractors are designed to permanently solve the problem of dust dispersion generated by sanding and polishing.



The self-cleaning filter system, unique in its range of reference, is derived from the centralised industrial systems and allows to keep the filters always clean which do not require any maintenance. The use of a tool automatically starts the suction turbine that will turn off when you stop working, thus reducing fuel consumption.

We also have a line of sanding systems with compressed air and low consumptions, ideals for areas that require ATEX products.

STI-C



Voltage: 230 V 50 Hz

Control voltage: 12 Volt

Suction volume: 150 m³/h

Suction depression: 210 mbar

Supply air pressure: Max 8 bar

Vacuum turbine: 1,3 kW

Noise: 67 dBA

Sizes: 450 x 450 x 800 mm

Weight: 41,5 Kg

Reserve tank for the filter cleaning, electric and pneumatic controls, equipped with a 5mt. suction hose.

ST2-C

Voltage: 230 V 50 Hz

Control voltage : 12 Volt

Suction volume: 300 m³/h

Suction depression: 210 mbar

Supply air pressure: Max 8 bar

Vacuum turbine: 1,3 + 1,3 kW

Noise: 68 dBA

Sizes: 450 x 450 x 800 mm

Weight: 47 Kg

2 operators and 2 high performance monophase motors, manual and automatic cleaning filters, electric and pneumatic controls, equipped with two 5mt suction hoses.



CUSTOMIZE YOUR ST WITH KIT PC TO MAKE IT EVEN MORE FUNCTIONAL



AIRone

Voltage: missing

Control voltage : missing

Vacuum turbine: missing

Sander's vacuum volume: 35 m³/h

Air consumption: 450 l/min

Supply air pressure: Max 6 bar

Noise: 58 dBa

Sizes: 450 x 450 x 800 mm

Weight: 13 Kg

Exclusively powered by compressed air, it doesn't need electric supply. Completed with sander and a 3 mt. Suction hose.

ST2-TF

Voltage: 230 V 50 Hz

Control voltage : 24 Volt

Suction volume: 210 m³/h

Suction depression: 200 mbar

Supply air pressure: Max 8 bar

Vacuum turbine: 1,5 kW

Noise: 68 dBa

Sizes: 500 x 1000 x 900 mm

Weight: 60 Kg

Equipped with a flat surface, suction hoses and sander's holder, accessory shelves, paper boxes manual and automatic cleaning filters, electric and pneumatic controls, equipped with two 5mt suction hoses.



เครื่องสูบลม



Extractors for wall installation

Extractors for wall installation designed for the suction and the filtering of dry dust generated by sanding and polishing.



Industrial extractors designed for wall installation, ideal for the connection with an articulated arm. Automatic and manual starter of the single-phase turbine. Equipped with a self-cleaning filtering system and completed with a support bracket.

STI-M



Voltage: 230 V 50 Hz

Control voltage: 24 Volt

Suction volume: 150 m³/h

Suction depression: 210 mbar

Supply air pressure: Max 8 bar

Vacuum turbine: 1,3 kW

Noise: 67 dBa

Sizes: 450 x 450 x 800 mm

Weight: 32,5 Kg

1 operator. Automatic uses and adjustable suction on the front of the machine. Automatic and manual starter of the single-phase turbine. Self-cleaning filtering system. Completed with a support bracket

ST2-M

Voltage: 230 V 50 Hz

Control voltage: 24 Volt

Suction volume: 300 m³/h

Suction depression: 210 mbar

Supply air pressure: Max 8 bar

Vacuum turbine: 1,3 + 1,3 kW

Noise: 72 dBa

Sizes: 450 x 450 x 800 mm

Weight: 34 Kg

2 operators. Automatic uses and adjustable suction on the front of the machine.

Automatic and manual starter of the single-phase turbine. Self-cleaning filtering system. Completed with a support bracket.



STM-TF



Voltage: 400 V 50 Hz

Control voltage: 24 Volt

Suction volume: 306 m³/h

Suction depression: 210 mbar

Supply air pressure: Max 9 bar

Vacuum turbine: 2,2 kW

Noise: 72 dBa

Sizes: 500 x 500 x 870 mm

Weight: 60 Kg

3 operators. Automatic uses and adjustable suction on the front of the machine.

Automatic and manual starter of the three-phase turbine. Self-cleaning filtering system. Completed with a support bracket.

Independent extractors

Independent extractors ideals for preparation zones, easy to install and to implement.



Multipurpose modules for energy distribution: dust extraction, compressed air and electricity. Ideal for preparation zones, it can be used as a built-in module or as a free installation; just connect it and the operator can work immediately.

As all Stucchi 1950 products, is equipped with a self-cleaning filtering system that does not require any maintenance. Automatic and programmable control by the frontal touch-screen.

Suction starter with tools, both electric and with compressed air.

Available in different shapes, sizes and powers.



ME-I Compact

Voltage: 230V 50Hz
Control voltage: 24 Volt
Suction volume: 150 m³/h
Suction depression: 210 mbar
Supply air pressure: Max 8 bar
Vacuum turbine: 1,3 kW
Noise: 67 dBa
Sizes: 500 x 360 x 770 mm
Weight: 35 Kg
2 operators.

ME-IP Compact

Voltage: 230V 50Hz
Control voltage: 24 Volt
Suction volume: 300 m³/h
Suction depression: 210 mbar
Supply air pressure: Max 8 bar
Vacuum turbine: 1,3 + 1,3 kW
Noise: 72 dBa
Sizes: 500 x 360 x 770 mm
Weight: 38 Kg
2 operators



ME-I

Voltage: 230 V 50 Hz
Control voltage: 24 Volt
Suction volume: 150 m³/h
Suction depression: 210 mbar
Supply air pressure: Max 8 bar
Vacuum turbine: 1,3 kW
Noise: 67 dBa
Sizes: 500 x 400 x 2000 mm
Weight: 76 Kg
1 operator, equipped with a 7 mt. suction hose and a single-phase turbine.
The front pocket allows to put the suction hose back inside it.





ME-IP

Voltage: 230 V 50 Hz

Control voltage: 24 Volt

Suction volume: 300 m³/h

Suction depression: 210 mbar

Supply air pressure: Max 8 bar

Vacuum turbine: 1,3 + 1,3 kW

Noise: 72 dBa

Sizes: 500 x 400 x 2000 mm

Weight: 86 Kg

2 operators, equipped with two 7 mt. suction hoses and a single-phase turbine. The front pocket allows to put the suction hose back inside it.

ME-2

Voltage: 400 V 50 Hz

Control voltage: 24 Volt

Suction volume: 306 m³/h

Suction depression: 240 mbar

Supply air pressure: Max 9 bar

Vacuum turbine: 2,2 kW

Noise: 72 dBa

Sizes: 500 x 400 x 2000 mm

Weight: 124,5 Kg

2 operators, equipped with three-phase turbine.



ME-2P

Voltage: 400V 50Hz

Control voltage: 24 Volt

Suction volume: 306 m³/h

Suction depression: 240 mbar

Supply air pressure: Max 9 bar

Vacuum turbine: 2,2 kW

Noise: 72 dBa

Sizes: 1000 x 400 x 2000 mm

Weight: 183 Kg

2 operators, equipped with two 7 mt. suction hoses and a three-phase turbine. The front pockets allow to put the suction hoses back inside it.



ME-2PD

Voltage: 400 V 50 Hz

Control voltage: 24 Volt

Suction volume: 306 m³/h

Suction depression: 240 mbar

Supply air pressure: Max 9 bar

Vacuum turbine: 2,2 kW

Noise: 72 dBa

Sizes: 2000 x 400 x 2000 mm

Weight: 280 Kg

Multifunction wall which can be divided into modules (aspirator, accessory holder and front pockets for hoses). 2 operators, built-in or free-standing installation.



Central extraction systems

Extractors designed for dust extraction systems.



Extractors equipped with an high-performance sleeve-filtering system, an automatic or programmable cleaning-filter system. A control panel “touch screen” allows to monitor the functioning and regulate the cleaning ranges. High energy-saving guaranteed by a switching-on / off automatic system which starts the suction turbine when the first tool is switched on and turns off the turbine a few seconds after the switching-off of the last tool.

4 kW and 15 kW machines can be equipped with inverter to keep the suction always efficient with the lowest consumption.

On request, there are also available 9 kW, 11 kW or 15 kW power versions.



ST3-TF

Voltage: 400 V 50 Hz

Control voltage: 24 Volt

Suction volume: 306 m³/h

Suction depression: 220 mbar

Supply air pressure: Max 9 bar

Vacuum turbine: 2,2 kW

Noise: 72 dBa

Sizes: 520 x 620 x 1350 mm

Weight: 96 Kg

2/3 operators

ST3-GV



Voltage: 400 V 50 Hz

Control voltage: 24 Volt

Suction volume: 320 m³/h

Suction depression: 250 mbar

Supply air pressure: Max 9 bar

Vacuum turbine: 3 kW

Noise: 72 dBa

Sizes: 650 x 720 x 1400 mm

Weight: 130,5 Kg

3/4 operators.



ST4-TF

Voltage: 400V 50Hz

Control voltage : 24 Volt

Suction volume: 400 m³/h

Suction depression: 250 mbar

Supply air pressure: Max 9 bar

Vacuum turbine 4 kW

Noise 72 dBa

Sizes: 650 x 720 x 1750 mm

Weight: 140 Kg

Optional: inverter

4 operators. Pneumatic lifting of the dusts collecting tank.



ST5-TF

Voltage: 400 V 50 Hz

Control voltage: 24 Volt

Suction volume: 540 m³/h

Suction depression: 270 mbar

Supply air pressure: Max 9 bar

Vacuum turbine: 5,5 kW

Noise: 72 dBa

Sizes: 520 x 1100 x 1750 mm

Weight: 221 Kg

Optional: inverter

6 operators and pneumatic lifting of the dusts collecting tank.

ST7-TF

Voltage: 400 V 50 Hz

Control voltage: 24 Volt

Suction volume: 540 m³/h

Suction depression: 300 mbar

Supply air pressure: Max 9 bar

Vacuum turbine: 7,5 kW

Noise: 74 dBa

Sizes: 520 x 1100 x 1750 mm

Weight: 221 Kg

Optional: inverter

8 operators and pneumatic lifting of the dusts collecting tank.





Mobile extractors and central extraction systems ATEX

ATEX industrial products which respect construction logics that prevent the formation of ignition sources and that can be installed or used in zone 22.



Stucchi 1950 ATEX extractors prevent the creation of static electricity, the motor overheating and other measures. All ATEX products of the Stucchi 1950 range respect and go beyond the security qualification imposed by the legislation, being always equipped with certified ATEX motors by the manufacturer.

The following characteristics come as standard:

- Standard anti-static filters for extractors EX Zone 21.
- Certified ATEX motors at origin.
- Electric components certified ATEX by the manufacturer.

ST2-TF EX



Voltage: 400 V 50 Hz
Control voltage: 24 Volt
Suction volume: 306 m³/h
Suction depression: 240 mbar
Supply air pressure: Max 8 bar
Vacuum turbine: 2,2 kW
Noise: 72 dBa
Sizes: 500 x 1000 x 900 mm
Weight: 60 Kg
Certification: II 3D c T 50°C



Equipped with a flat surface, suction hoses and sander holder, accessory shelves, paper boxes manual and automatic cleaning filters, electric and pneumatic controls, equipped with two 5 mt. suction hoses. Equipped with three-phase turbine ATEX certified.

ST3-GV EX

Voltage: 400 V 50 Hz
Control voltage: 24 Volt
Suction volume: 320 m³/h
Suction depression: 250 mbar
Supply air pressure: Max 9 bar
Vacuum turbine: 3 kW
Noise: 72 dBa
Sizes: 650 x 720 x 1400 mm
Weight: 130,5 Kg
Certification: II 3D c T 50°C
3/4 operators.





ST4-TF EX

Voltage: 400 V 50 Hz

Control voltage: 24 Volt

Suction volume: 400 m³/h

Suction depression: 250 mbar

Supply air pressure: Max 9 bar

Vacuum turbine: 4 kW

Noise: 72 dBA

Sizes: 520 x 1100 x 1750 mm

Weight: 221 Kg

Certification: II 3D c T 50°C

4 operators, pneumatic lifting of the dust collecting tank. Available with or without inverter.



ST5-TF EX

Voltage: 400 V 50 Hz

Control voltage: 24 Volt

Suction volume: 540 m³/h

Suction depression: 270 mbar

Supply air pressure: Max 9 bar

Vacuum turbine: 5,5 kW

Noise: 72 dBA

Sizes: 520 x 1100 x 1750 mm

Weight: 221 Kg

Certification: II 3D c T 50°C

6 operators, pneumatic lifting of the dust collecting tank. Available with or without inverter.



ST7-TF EX

Voltage: 400 V 50 Hz

Control voltage: 24 Volt

Suction volume: 540 m³/h

Suction depression: 300 mbar

Supply air pressure: Max 9 bar

Vacuum turbine: 7,5 kW

Noise: 74 dBA

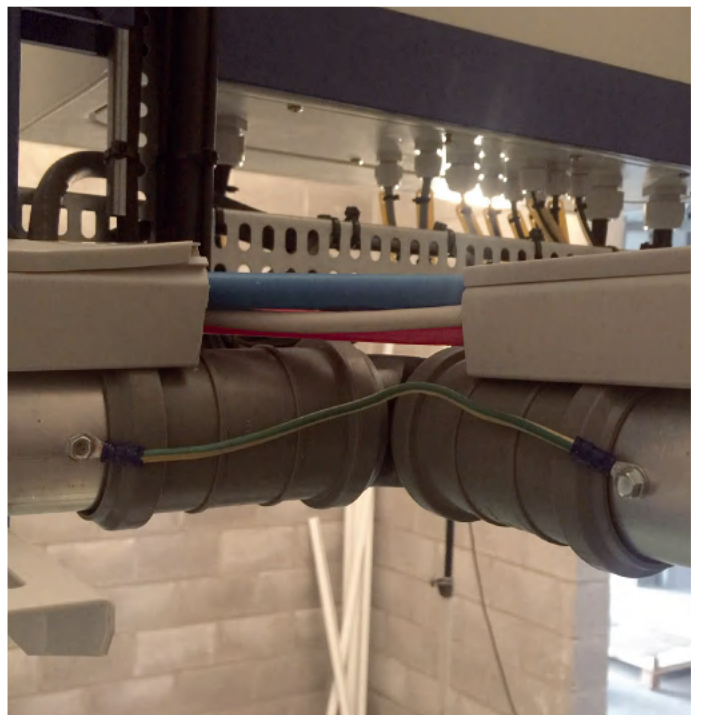
Sizes: 520 x 1100 x 1750 mm

Weight: 221 Kg

Certification: II 3D c T 50°C

8 operators, pneumatic lifting of the dusts collecting tank. Available with or without inverter.





Energy Distribution



Multipurpose hexagons

Multipurpose panels

Multipurpose modules

Articulated arms

Binary System

Multipurpose hexagons

Multifunctional hexagonal terminal elements, equipped, depending on the model chosen, with one or more dust extraction sockets with hose supports, 230 V power sockets, and connections for adjustable lubricated and dry air.



Starter is automatic with both electric and pneumatic tools.
It is possible to start the suction unit via the remote start selector on the hexagon.
It is also equipped with a manual device for interrupting the suction flow (trap), which allows the system to always have maximum suction performance.
Available also with sockets for electrical and pneumatic tools without suction.



EM

ON/OFF selector for manual suction
 N°1 Controlled dry air and control pressure gauge
 N°1 Automatic air for tools
 N°1 Automatic 230 V socket for tools
 N°1 Suction nozzle
 N°1 Trap, manual suction closing system
 N°1 Direct air
 1 Operator

ESM-T

ON/OFF selector for manual suction
 N°1 Controlled dry air and control pressure gauge
 N°2 Automatic air for tools
 N°2 Automatic 230 V socket for tools
 N°2 Suction nozzle
 N°2 Trap, manual suction closing system
 2 Operators



ESM-PT

ON/OFF selector for manual suction
 N°1 Controlled dry air and control pressure gauge
 N°2 Automatic air for tools
 N°2 Automatic 230 V socket for tools
 N°2 230 V 400 V interlocked sockets
 N°2 Suction nozzle
 N°2 Trap, manual suction closing system
 2 Operators



Multipurpose panels

Multipurpose panels with pneumatic and electric automatisms for one workstation.

Ideal for built-in installation in preparation zones or for free installation.



The automatic starter works with both electric and pneumatic tools.
The suction system can be turned on using the remote start selector on the panel.



PZ-MP

ON/OFF selector for manual suction
N°1 Controlled dry air and control pressure gauge
N°1 Automatic air for tools
N°1 Suction nozzle
N°1 Trap, manual suction closing system
1 Operator

PZ

ON/OFF selector for manual suction
N°1 Controlled dry air and control pressure gauge
N°1 Automatic air for tools
N°1 Automatic 230 V socket for tools
N°1 Suction nozzle
N°1 Trap, manual suction closing system
1 Operator



PZP

INTERLOCKED SOCKETS
ON/OFF selector for manual suction
N°1 Controlled dry air and control pressure gauge
N°2 Automatic air for tools
N°2 Automatic 230 V socket for tools
N°2 Prese 230V 400V interbloccate
N°2 Suction nozzle
N°2 Trap, manual suction closing system
N°1 aria diretta
2 Operators



PZP-I

ON/OFF selector for manual suction
N°1 Controlled dry air and control pressure gauge
N°2 Automatic air for tools
N°2 Automatic 230 V socket for tools
N°2 Suction nozzle
N°2 Trap, manual suction closing system
2 Operators



Multipurpose modules

Modules for the distribution of compressed air, electric energy and suction.





MP-C

ON/OFF selector for manual suction

N°1 Controlled dry air and control pressure gauge

N°1 Automatic air for tools

N°1 Automatic 230 V socket for tools

N°1 Suction nozzle

N°1 Trap, manual suction closing system

1 Operator. Projected to occupy angles, equipped with 5 mt. suction hose.

N°1 frontal pocket where it's possible to replace the suction hose.

MP-2

ON/OFF selector for manual suction

N°1 Controlled dry air and control pressure gauge

N°1 Direct air

N°2 Trap, manual suction closing system

N°1 Presa 230 V Schuko

Tasche frontali con:

N°2 Automatic air for tools

N°2 Suction nozzle

N°2 Automatic 230 V socket for tools

2 Operators. Ideal for free installation or built-in the preparation zone.

Equipped with two frontal pockets where it is possible to replace the suction hose.



MP-D

Closet with shelves

Double door

N°6 shelves

Closet with shelves. Ideal for free installation or built-in the preparation zone.



MP-CM

Cabinet with rollers for masking.

Ideal for free installation or recessed in preparation areas.

MP-CM modules allow you to apply the tape at the same time to the paper.

The product can be equipped with 3 different types of paper reels, 1 reel of film storage and a basket waste bin.

Masking papers: 85 cm, 45 cm or 18 cm

Film reels: 90 cm

Dimensions: 1000x 400 x 2000 mm

Paper not supplied



Articulated arms

Articulated arms installed on the wall with a support bracket, used to support and move the multifunctional hexagons following the operator needs.



Articulated arms available in three different measures B5 (5 m) e B6 (6 m) (on request, also 7 m). Thanks to this solution, it is possible to remove the obstacle of electric cables, compressed air tubes and suction hoses.

B5

Operating range: 180°

Weight: 80 Kg (arm only)

Total length: mt. 5

B6

Operating range: 180°

Weight: 90 Kg (arm only)

Total length: mt. 6

Binary System

Sliding binary system for dust extraction, compressed air, and electricity/lighting distribution.



The sliding binary system enables users to considerably reduce the service costs of the plant. It allows the service control unit to be positioned near the workstation, thus avoiding inconvenient flying cables or hoses that cross the work areas.

The service units integrated with this system can be customized according to the user needs.



BIN-SA-06 | BIN-CA-06

Total length: mt. 6

Length: 1 module mt. 2 (tot. 3 modules)

Total weight: 180 Kg | 186 Kg

Weight 1 module: 60 Kg | 62 Kg

Excluded central control units, available with integrated suction.

ST-BIN

Total length: mt. 12

Length 1 module: mt. 12

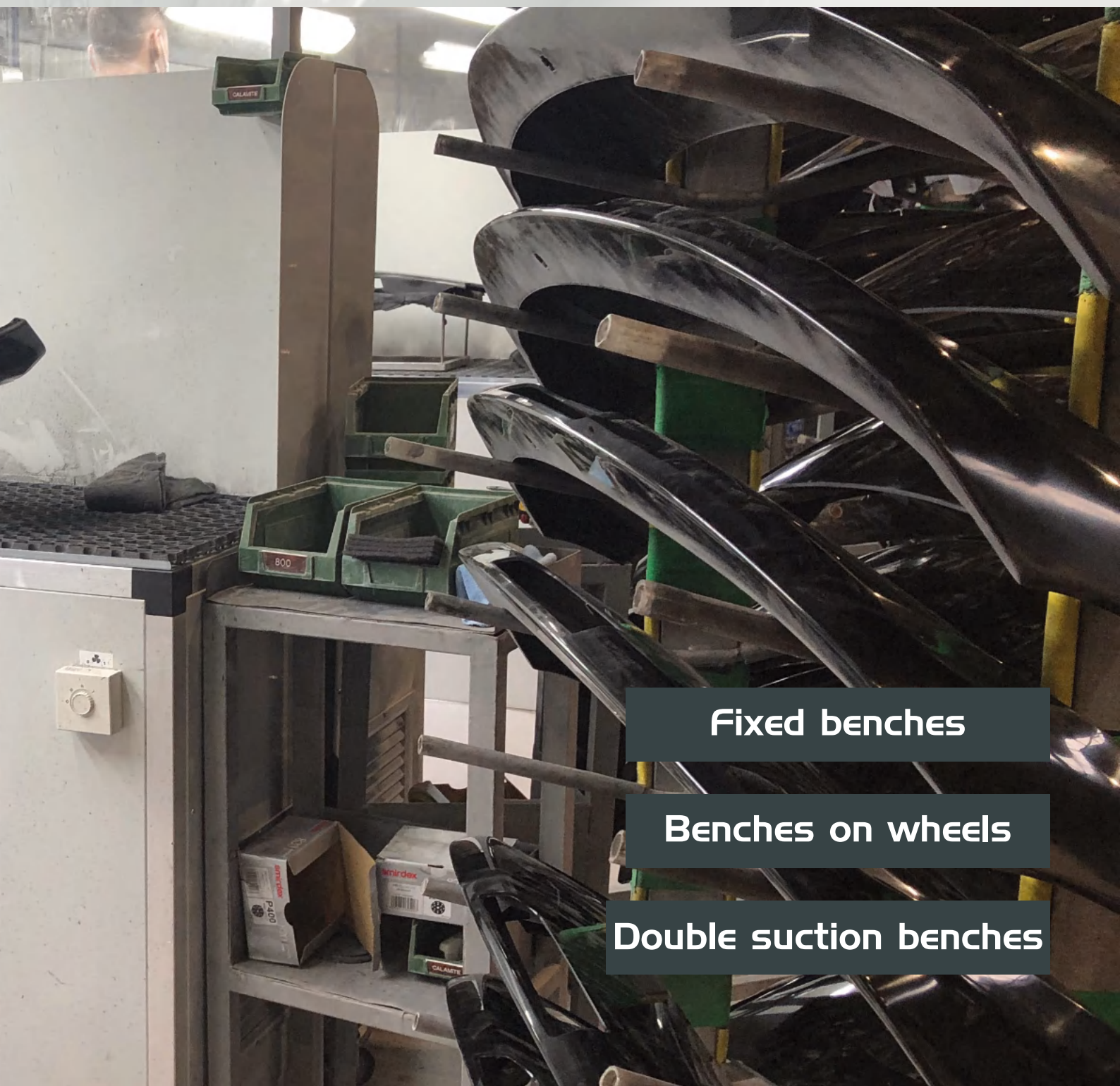
Total weight: 130 Kg

Weight 1 module: 60 Kg



Suction benches





Fixed benches

Benches on wheels

Double suction benches

Suction benches

Suction benches for sanding equipped with independent dust filtering system and motor. They don't need a connection with the centralised system.



Very quiet engine with a rubber-coated flat surface anti-slip and scratch resistant.

Available also the Combi version with a double suction, it is possible to have an orbit sander and a suction surface in one product, removing the produced dust at 100%.

Stucchi 1950 suction benches are equipped with F9 filters class, perfects for sanding dust, but are available different types: H class for dusts dangerous for the health or ATEX certified filters for potentially explosives dusts. We have also some pre-filters for different needs, like paint and spray hood, or a metallic mail for a protection against sparks for grinding and deburring with abrasives.

ST2-COMBI



Voltage: 230 V 50/60 HZ
Control voltage: 12 Volt
Suction volume: 300 m³/h
Suction depression: 210 mbar
Supply air pressure: Max 8 bar
Vacuum turbine: 1,3 + 1,3 kW
Noise: 68 dBa
Sizes: 500x1000x900 h
Weight: 57 Kg
Double suction (bench and internal extractor), 1 operator.
Equipped with a 5 mt. suction hose

MI-JOLLY

Voltage: 230 V 50 HZ
Suction volume: 2000 m³/h
Vacuum turbine: 750 W - 3 speedy
Sizes: 800x1000x900 h
Weight: 80,5Kg
Optional: wheels, external drain, extension
Vertical cartridge filter to collect dust in the removable pockets with manual opening. Manual start.



MI-JOLLY COMBI



Voltage: 230 V 50 HZ
Suction volume: 2000 m³/h
Vacuum turbine: 750 W - 3 speedy
Sizes: 800x1000x900 h
Weight: 107,5 Kg
Optional: wheels, external drain, extension
Double suction (bench and internal extractor). Vertical cartridge filter to collect dust in the removable pockets with manual opening. Manual start.

MI-SMARTY

Voltage: 230 V 50 HZ
Suction volume: 2000 m³/h
Vacuum turbine: 750 W - 3 speedy
Sizes: 1200 x 800 x 800 + 400h lights
Weight: 119 Kg
Optional: wheels, external drain
Vertical cartridge filter to collect dust in the removable pockets with manual opening. Manual start.





MI-SMALL

Voltage: 230 V 50 HZ

Suction volume: 2000 m³/h

Vacuum turbine: 750 W - 3 speedy

Sizes: 1000 x 1000 x 1000

Weight: 111 Kg

Optional: wheels, external drain

Vertical cartridge filter to collect dust in the removable pockets with manual opening. Manual start.

MI

Voltage: 400 V 50 HZ

Suction volume: 5000 m³/h

Vacuum turbine: 1,9 kW

Sizes: 2000 x 1000 x 900 h

Weight: 194 Kg

Optional: wheels, external drain, ATEX motor, inverter

Vertical cartridge filter to collect dust in the removable pockets with manual opening. Manual start



MI-COMBI

Voltage: 400 V 50 HZ

Suction volume: 5000 m³/h

Sanding suction volume: 150 m³/h

Vacuum turbine: 1,9 kW

Vacuum turbine - sanding machine: 1,3 kW

Sizes: 2000 x 1000 x 900 h

Weight: 230 Kg

Optional: wheels, external drain, ATEX motor, inverter

Double suction (bench and internal extractor). Vertical cartridge filter to collect dust in the removable pockets with manual opening. Manual start.





Components

**All special components with which we produce our machines are all in our properties.
This guarantee a constant and continue assistance during the years.**

ELECTRONIC BOARDS

Thanks to the cooperation with the biggest electronic producers, we project our controls.
Touch screen buttons protected with membranes against dusts and water proof.
LED lights for an easy reading of the functions.



FILTERING SYSTEM

Thanks to a long experience and to the research of innovative materials, we produce a self-cleaning filtering system guaranteed for 5 years.
This component reduces times of maintenance and provides clean air.



PLASTIC STAMPS AND MECHANICAL MANUFACTURING

We project stamps for our models, components produced by plastic injections and 3D stamps. In addition, thanks to modern machines, we product the rest of the production.





www.stucchi.net



STUCCHI 1950 S.R.L.

Via M.te Bisbino, 24 - 20021 Baranzate (MI)



ESTABLISHED MARKETS

Europe, Japan, Thailand, Vietnam, South Africa, Canada, New Zealand



NEXT EXPANSION MARKETS

USA, Middle East, Australia, Russia



Stucchi 1950

STUCCHI

1950

Stucchi 1950

www.stucchi.net



Stucchi 1950 S.r.l.

Registered office: Via Arcisate, 15 - 20157 Milan (MI)

Operating office: Via M.te Bisbino, 24 - 20021
Baranzate (MI)

Telephone: +39 02 36.53.89.04 | Fax: +39 02 39.29.27.06

www.stucchi.net | info@stucchi.net



Stucchi 1950