

# Optional Accessories

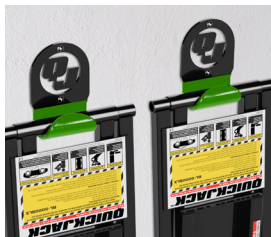
## SUV & Light Truck Adapter Kit

- (4) Contact pads
- (4) Sliding receivers
- (4) 3" Stackable adapters



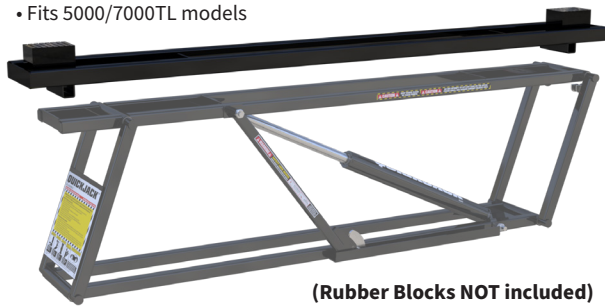
## Wall Hanger Set

- Sold in sets of two
- Solid-steel construction
- 150% rated capacity



## Frame Extension Kit

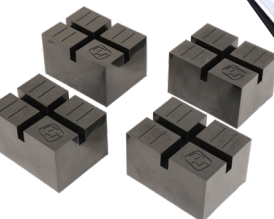
- (2) Frame extension adapters with 66" lift point spread each
- Rugged 14-gauge steel construction
- Fits 5000/7000TL models



(Rubber Blocks NOT included)

## ATV / Motorcycle Lift Adapter Kit

- Aluminum diamond tread plate
- Heavy-duty tie-down rings
- Adjustable wheel clamp



## Pinch-Weld Blocks

- Sold in sets of 4
- Specially formulated urethane rubber
- Water/Chemical resistant and 100% weatherproof



## Pinch-Weld Pucks

- Sold in sets of 4
- Specially formulated urethane rubber
- Round puck pad secures difficult pinch-weld rails without risk of damage



## Crossbeam Adapter

- Adjustable lifting pads
- Additional 4.75" clearance height
- Comes with custom contact pads



**NEW & IMPROVED**

# The Ultimate Portable Car Lift



The QuickJack portable lifting system makes vehicle maintenance on and off the track convenient and lightning fast. The QuickJack can go anywhere and is easily stowed in the trunk or back seat of most cars. Bring it to the track, or drop it on your garage floor to perform routine maintenance in the comfort of your home, all in seconds.

**Call 1-888-262-3880 or visit [www.quickjack.com](http://www.quickjack.com)**



**QUICKJACK™**



**3500SLX** Light-Duty



**5000TL** Most Popular Model



**7000TL** Ideal for Truck & SUVs



**6000ELX** Extra-Long Wheelbases



**5000TLX** Extended Frame Length



**7000TLX** Extended Frame Length



\* For reference purposes only; DO NOT raise a Vehicle without Lift Blocks.

Truck Adapters NOT Included

## SPECIFICATIONS

	3500SLX	5000TL	5000TLX	7000TL	7000TLX	6000ELX
Lifting Capacity	3,500 lbs. (1,588 kg)	5,000 lbs. (2,268 kg)	5,000 lbs. (2,268 kg)	7,000 lbs. (3,175 kg)	7,000 lbs. (3,175 kg)	6,000 lbs. (2,722 kg)
Lowered Height	3" (76 mm)	3" (76 mm)	3" (76 mm)	3.5" (89 mm)	3.5" (89 mm)	3.5" (89 mm)
*Lifting Height (frame only)	16" (404 mm)	20.25" (512 mm)	20.25" (512 mm)	20.75" (527 mm)	20.75" (527 mm)	20.75" (527 mm)
Lifting Height (stacked blocks)	21" (533 mm)	24" (610 mm)	24" (610 mm)	24.5" (622 mm)	24.5" (622 mm)	24.5" (622 mm)
Lift Point Spread (min.)	27" (686 mm)	37" (940 mm)	43" (1,092 mm)	37" (940 mm)	43" (1,092 mm)	53" (1,346 mm)
Lift Point Spread (max.)	50.5" (1,283 mm)	60" (1,524 mm)	66" (1,676 mm)	60" (1,524 mm)	66" (1,676 mm)	76" (1,930 mm)
Frame Width	10.5" (267 mm)	11" (279 mm)	11" (279 mm)	12.5" (318 mm)	12.5" (318 mm)	12.5" (318 mm)
Frame Length	62.5" (1,588 mm)	70" (1,778 mm)	76" (1,930 mm)	70.75" (1,797 mm)	76" (1,930 mm)	86.75" (2,203 mm)
Frame Weight	60 lbs. (27 kg)	78 lbs. (35 kg)	81.5 lbs. (37 kg)	98 lbs. (45 kg)	103 lbs. (47 kg)	112 lbs. (51 kg)