



TSPro and Troodon diagnostic scan tools

Innovation • Reliability • Quality



WWW.DEVCOM.CZ

TSPRO 10 DIAGNOSTIC TABLET



The TSPRO 10 Diagnostic Tablet is a modern standalone diagnostic tool designed for professional workshops. Improving on our existing diagnostics and expanding their functions in line with current technological trends. TSPRO 10 our first device to support the new DoIP technology, as well as conventional CAN based diagnostics. The tablet can be expanded with additional modules, has a durable finish and the display is protected by the Asashi Dragontrail™ tempered glass.

In terms of connectivity, the new device offers optional 4G/LTE, Wifi and Bluetooth 4.0 support. The device is equipped with an integrated 13 MP camera, which can be used, for example, to take photos and videos to document repairs carried out on the vehicle. Of course, as with previous models, an optional four-channel oscilloscope module is available.

TSPRO 10 SPECIFICATIONS

System parameters

Diagnostics	Fully featured for all vehicles
Display	10,4" multi-touch 1280 × 768 resolution
Processor	ARM Cortex A9 Core (4-core)
RAM	2 GB
Internal storage	32 GB
Battery	24 400 mWh
Operating system	Android 9
Connectors	USB 2.0 type A for external devices USB 2.0 type B 100 Mbit Ethernet 3.5 mm audio jack

Technical parameters

Operating temp.	-40°C - 70°C
Power supply	9 - 36 V
Power consumption	15 W load, 50 mW standby
Dimensions	310 × 191 × 35 mm

Oscilloscope

Channels	4 channels (galvanic isolation) 20 MS/s (each channel) 50mV/d – 100V/d
Input impedance	1MΩ
Recording	up to 1 hour

Peripherals

Wifi 802.11a/b/g/n/ac
Bluetooth
GSM / LTE modem (optional)
GPS modul (optional)
Accelerometer sensor
13 MP camera with LED flash
Stereo speakers
MicroSD slot



TROODON OBD DIAGNOSTIC INTERFACE



Universal OBD diagnostic interface for all types of vehicles. This communication module opens up possibilities for complete serial vehicle diagnostics; it can be used to access every control unit in the vehicle and perform all advanced diagnostic functions. The new interface can be connected to a personal computer with a modern Windows operating system via USB, Wifi, or Bluetooth. Troodon OBD can also be connected to a mobile phone.

We offer the Troodon OBD interface in two basic variants - *Basic* and *Pro*. The *Basic* variant is limited to one brand of passenger cars or motorcycles, without the possibility of further expansion. Supported diagnostic protocols and associated support for older vehicles are also partially limited. However, diagnostic functions for supported vehicles are not restricted in any way.

The *Pro* variant is a full replacement for the previous generation of Troodon interfaces and is available for any combination of passenger and commercial vehicle brands, buses, and motorcycles. The diagnostic supports all available protocols and can be expanded with additional brands at any time after purchase.

TROODON OBD SPECIFICATIONS

Technical parameters

Diagnostics	Fully featured for all vehicles
Connectors	OBD II 16-pin for vehicle connection micro USB for connecting to a personal computer
Power supply	OBD connector (12 V DC)
Consumption	3 W full load
Dimensions	48 × 65 × 26 mm
Weight	58 g

Peripherals

microSD memory card slot
Bluetooth
Wi-fi
GSM module (optional)



TSPRO COLOR DIAGNOSTIC TOOL



TSPRO Color is a compact heavy-duty diagnostic scan tool with a colour touch screen and a simple keypad. It is designed to meet all the requirements of a modern diagnostic device. The device also features an optional oscilloscope module. All serial and parallel diagnostic functions are available directly via the device without the need for a PC connection.

At the same time, however, once the TSPRO Color is connected to a PC, all diagnostic functions can be performed using the supplied software. In this configuration, the device serves as an adapter (interface) between the control unit and the PC. Either in standalone mode or connected to a PC, with TSPRO Color, all the advanced functions are always at your disposal.

TSPRO COLOR SPECIFICATIONS

Technical parameters

Diagnostics	Fully featured for all vehicles
Display	5.7" color touch screen 640×480 resolution
Keypad	Silicone buttons
Connectors	CAN connector for diagnostics RJ45 (Ethernet) Power supply connector 9-pin canon for oscilloscope connection USB type B for connecting to a personal computer
Power supply	Internal battery OBD connector (12 V DC) External power supply (220 V)
Consumption	8 W
Dimensions	200 × 120 × 54 mm
Weight	746 g

Oscilloscope (optional)

Channels	2 / 4 / 8 channels 20 MS/s (each channel) 50mV/d – 100V/d
Time base	5µs – 5s
Binding	AC/DC
Starting	Single, Auto/Roll, Normal (rising/falling trigger)
Recording	up to 2 hours (4 channels)
Storage	1 GB

Peripherals

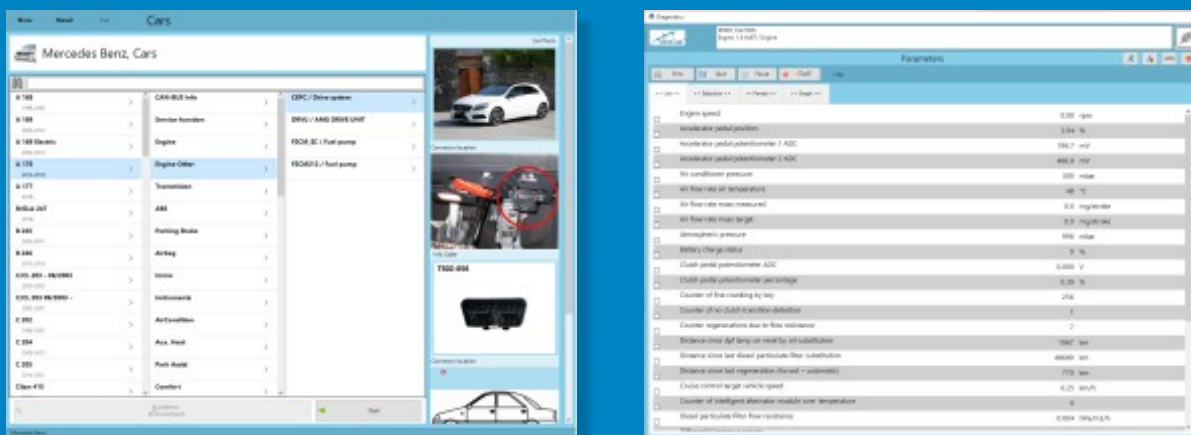
Optional wi-fi module



DEVCOM DIAGNOSTICS

A wide range of expansion options make **TSPro** and **Troodon** diagnostics ideal for your workshop. Within the DevCom diagnostics, you can choose from more than sixty software modules covering over seventy manufacturers of **passenger cars, motorcycles, light commercial vehicles** and **trucks**. In addition, diagnostics for **buses, agricultural equipment** and **industrial engines** are also on offer.

As an optional upgrade, an integrated oscilloscope module can also be ordered for the TSPro series to perform parallel diagnostics where conventional serial diagnostics may not be sufficient.



Supported diagnostics standards:

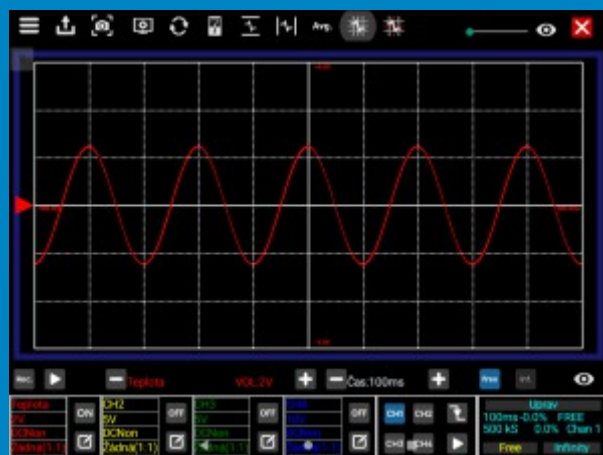
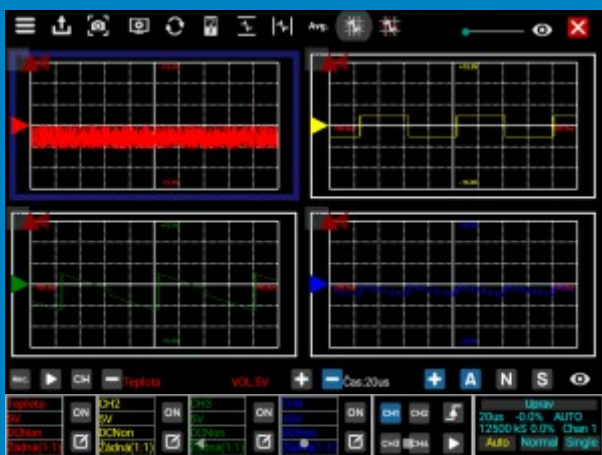
EOBD-II, ISO 9141, ISO 9141-2, ISO 14230-1, ISO 15765-4, SAE J2480, SAE J1850 VPW, SAE J1850 PWM, SAE J1939, CAN BUS HighSpeed / MidSpeed / LowSpeed - Singlewire, K-Line, LIN



TSPRO OSCILLOSCOPE

For diagnosing faults in the very complex electronic systems found in today's cars, conventional serial diagnostics may not be sufficient. If this is the case, **TSPro** devices allow the monitoring of control signals of individual components or even entire control systems in the vehicle using a built-in oscilloscope.

The biggest advantage is the ability to record the measured signals into the TSPro's internal memory. The recording can be up to several hours long and is suitable for subsequent troubleshooting of sporadic faults.



Testing a wide range of electrical signals

- ignition circuit (primary and secondary circuit)
- injection valves
- speed and phase sensors
- lambda sensors
- air quantity/mass sensors
- throttle position sensor
- actuator control signals
- ignition circuit / time relays
- starting and charging circuits
- data and communication wires (CAN, LIN)
- ABS sensors
- and many more...

Key features

- large sample memory
- rich accessories (cables, tips, probes, etc.)
- waveform storage and printing
- sample waveforms (automatic adjustment of ranges according to the sample waveform)
- stop and zoom function
- autoset for selected signals
- configuration of the display according to the connected probes





DevCom spol. s r. o. is a Czech manufacturer of electronic devices for the Automotive, Aerospace, Embedded Computing, IoT/Telematics and Industry 4.0 segments. The company also provides HW and SW development services.



CONTACT US