



SPRAYTRONIC-3

VDH Products has a total solution for controlling spraying booths, including the associated switching panels.

VDH Products delivers complete solutions for controlling spraying booths in the automotive sector, the aerospace industry, shipbuilding and luxury yacht building. These are fields where extreme precision is required in the control of pressure and temperature.

Our brand new Spraytronic-3 controller has been designed to control temperature, humidity, air-flow and air-pressure inside spray-, dry- and/or flash-off booths. These booths are e.g. typically used to (re)paint automotive objects such as parts/panels. However, the Spraytronic-3 controller is not limited to any particular object. The Spraytronic-3 controller has a variety of configuration options which can be used to adapt to different situations and requirements.

Short summary of operation; a supply fan adds air to a booth while an exhaust fan extracts air from the booth hereby removing the air/paint mixture, or vapour, while applying paint. During drying most exhaust air can be returned to the supply air by switching a valve so previously heated air is reused. A desirable air-flow and air-pressure can be maintained whereby the supply air can be heated by e.g. a gas-burner so a desired temperature is obtained. Optionally, a humidifier is controlled to maintain a required relative humidity. The Spraytronic-3 controller, has a touchscreen control panel that shows current values, allows setpoint adjustments and can be used to set system parameters.

The Spraytronic-3 has among others the following features:

Modes

- On, Off & Cooldown
- Spray
- Dry & Cool
- Quick dry
- Flash-Off

Temperature Control

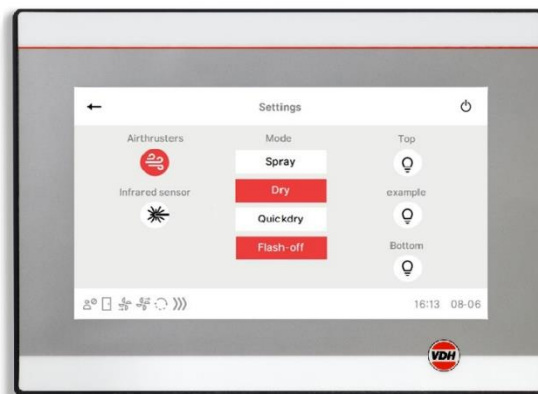
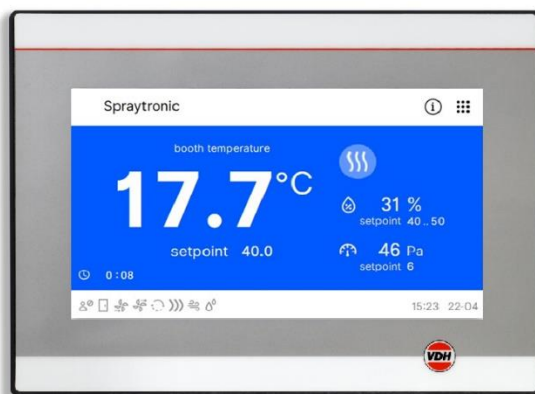
- Analog Heating control
- Hot Water heating
- High-Low Burner control
- Hybrid Heating
- Infrared Temperature Sensor

Pressure Control

- Manual / Automatic
- Control valve

Humidity Control

- RH Sensor
- Water inlet
- Drain valve



7" Touchpanel



SPRAYTRONIC-3

Technical data

Type	Spraytronic-3
Enclosure	Aluminium, DIN rail
Dimensions	310 x 191 x 100 mm [LHD]
Supply	12Vdc [2a MAX.]
RH-Range	0-100% RH
Communication	Ethernet
Temp. Sensors	3x Pt-1000
In- and outputs	24x digital in 19x relay contacts outputs 8x analog out 3x analog input



Dimensions Spraytronic-3

