

## Top quality Custom Test stand



The performance of the Fuel Injection system is one of the crucial aspects of modern engines, regardless of the application field. The importance of an accurate and exhaustive analysis of the injection systems is continuously increasing and this makes the demand of high quality and sophisticated test stand to grow up.

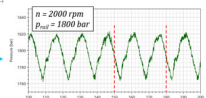
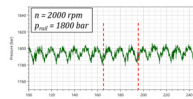
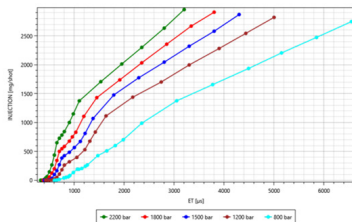
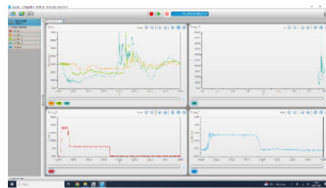
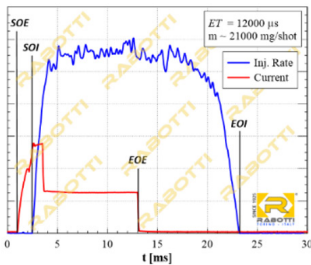
### WHAT WE OFFER:

- **Customized Test Benches:** We provide tailored solutions that meet the specific needs of our clients. Our test benches are designed to be flexible and highly accurate, ensuring optimal performance.
- **Advanced Technology:** Our equipment delivers reliable and precise results thanks to the application of the most accurate measurement devices (Pressure sensors, flowmeters, injection rate meters, spray monitoring systems).

- **Expertise and Collaboration:** With a deep understanding of Injection systems, we collaborate closely with industry leaders in several application field such as Automotive, Heavy-Duty, Marine and aviation.

## WHY CHOOSE US:

- **Experience:** Our extensive experience in the hydraulic system sector allows us to offer unparalleled expertise.
- **Customization:** Creating bespoke test equipment that perfectly aligns with your testing requirements is our mission.
- **Precision:** Our commitment to precision ensures the best accuracy for both performance and endurance testing.



**Contact us:**

[www.rabotti.it](http://www.rabotti.it)   [sales@rabotti.it](mailto:sales@rabotti.it)

**Follow us:**

