



EN

Orange to Green

➤ Start your recycling evolution and grow it!

About us



**We design and manufacture
Professional Equipment
for Depollution and Dismantling of ELVs.**



**Everything we design and manufacture is
born in our headquarters in Poviglio - Italy**



About us



History

IRIS-MEC Srl established in 2006 has gradually grown up into a company specialized in the design and manufacturing of professional equipment and products for the vehicles recycling industry.

Our production is appreciated by professionals for the practical and innovative design approach.



History

IRIS-MEC Srl established in 2006 has gradually grown up into a company specialized in the design and manufacturing of professional equipment and products for the vehicles recycling industry.

Our production is appreciated by professionals for the practical and innovative design approach.



- 2006**
FOUNDATION
IRIS-MEC Srl born founded by 3 associates in Boretto (RE) - Italy.
- 2011**
NEW HEADQUARTER
New manufacturing plant in Poviglio (RE) - Italy - actual headquarter.
- 2012**
PARTNERSHIP
RP Recycling Partners founded by IRIS-MEC (50%) and Ing. Dipl. Joachim Vogt (50%) in Munich (Germany).
- 2013**
CERTIFICATION
TUV ISO 9001:2008 - Quality System certification by TÜV SÜD
- 2015**
PARTNERSHIP
Merger of Progetto Ecosoluzioni competitor located in Tuscany (Italy).
- 2016**
CERTIFICATION
TUV ISO 9001:2015 - Quality System certification by TÜV SÜD
- 2018**
FOUNDATION
IRONTEC founded by IRIS-MEC (50%) and M&T (50%) in Mantua (Italy).
IRIS-MEC factory extension works in Poviglio (RE) - Italy - additional 1000sqm (total 2200 sqm).

- 2019**
NEW PLANT
Purchasing new manufacturing plant of 1500 sqm in Guastalla (Re) Italy.
- 2020**
FOUNDATION
IRISMETAL founded by IRIS-MEC (51%) and M&T (49%) in Guastalla (RE) - Italy.
Acquisition of additional 5000 sqm for IRISMETAL manufacturing plant (goal for 2000 sqm).
- 2021**
NEW PLANT
Acquisition of a painting plant (900 sqm) for hi tech industrial paintworks.
- 2024**
NEW HEADQUARTER
New manufacturing hub and headquarters in Poviglio (RE) - Italy.



From project to product



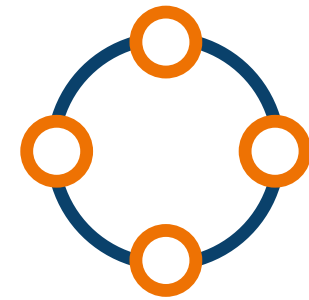
From project to product



Production / Assembly



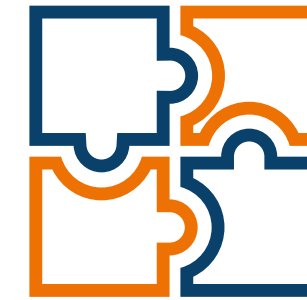
Strengths



Integrated Production Process

PRODUCTIVE EFFICIENCY, FLEXIBILITY,
AND COMPETITIVE PRICES

Our production cycle is integrated, and our technical offices, along with our departments for metalworking, painting, and assembly, meticulously oversee each production phase to consistently ensure the highest quality, from design to final testing.



Synergy Among Departments

TECHNICAL OFFICE, METALWORKING, PAINTING,
AND ASSEMBLY DEPARTMENTS

The perfect synergy among these parts in addressing customer needs continually renews our technical know-how, which has always fostered innovation and culture for car dismantlers.

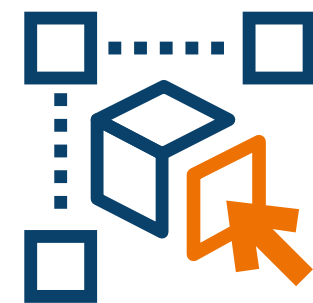


Constructive Quality

QUALITY CONTROL AT EVERY STAGE
AND CONSISTENT PERFORMANCE

The entire production cycle, from development to assembly, takes place internally, allowing us to constantly monitor every production phase and ensure it always meets the highest quality standards and predetermined timelines.

Strengths



Custom Productions

FOR SPECIAL AND COMPLEX
NEEDS BEYOND STANDARD

We can create partially or completely custom solutions capable of addressing various needs, such as quantities and types of vehicles to be processed, compliance with current regulations, and specific working areas. The advantage of an integrated production cycle.



Maximum Expertise

QUALIFIED, EFFICIENT,
AND RESPONSIVE TECHNICAL SUPPORT

Deep knowledge of the technologies used and their functionalities ensures efficient after-sales support, backed by a qualified international distribution network and rapid service assistance.



Reliability and Availability

ON-TIME DELIVERY
AND ALWAYS AVAILABLE SPARE PARTS

Everything we design is manufactured and assembled in our workshops, ensuring production stays on schedule and spare parts are always available.

Strengths



Certifications

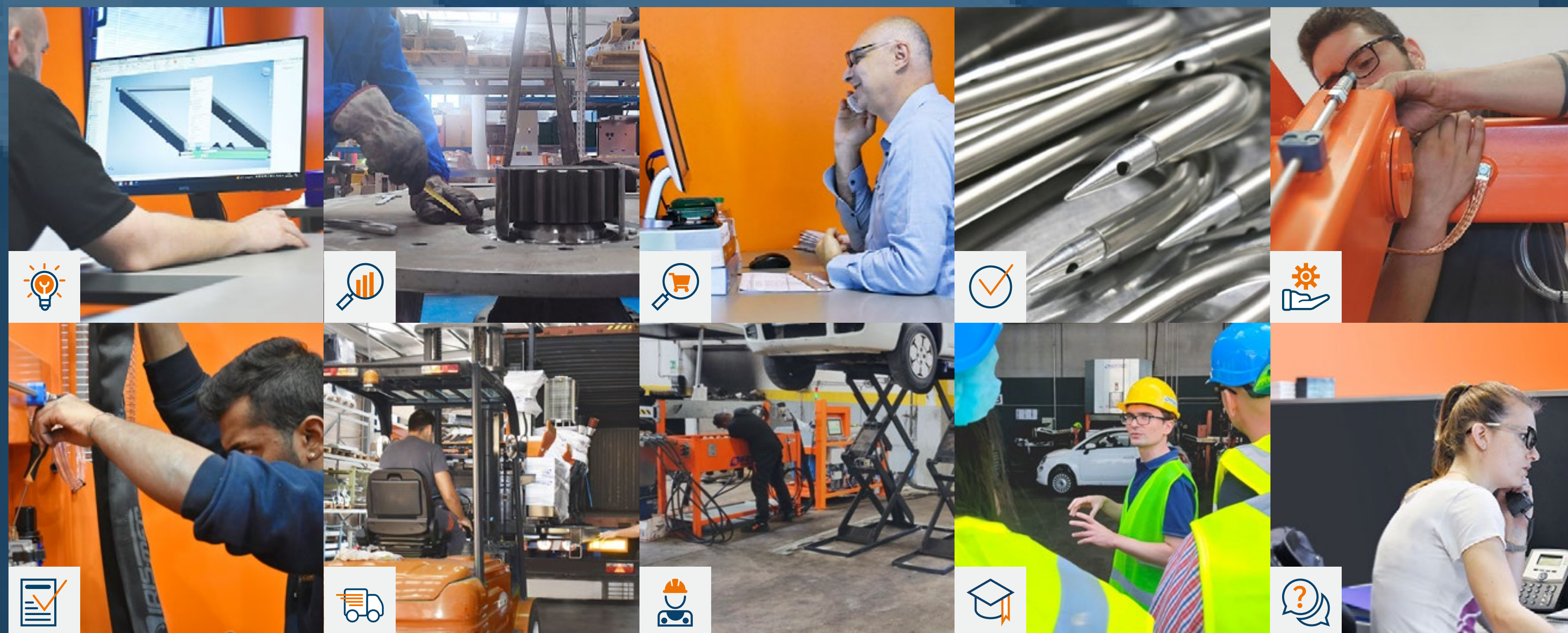
RELIABILITY AND SAFETY

Reliability, safety, and compliance with regulations are three valid reasons to rely on a certified company.

We are ISO 9001 certified for our Quality Management System.



What we do



What we do



Design

4 designers Autodesk Inventor and Vault



R&D department

For prototypes with machine tools



Purchase & Outsourcing management



Quality Control

Incoming materials



Production Assembly

on Iris-Mec design



Final Test



Packaging & Deliveries



Installation



Training

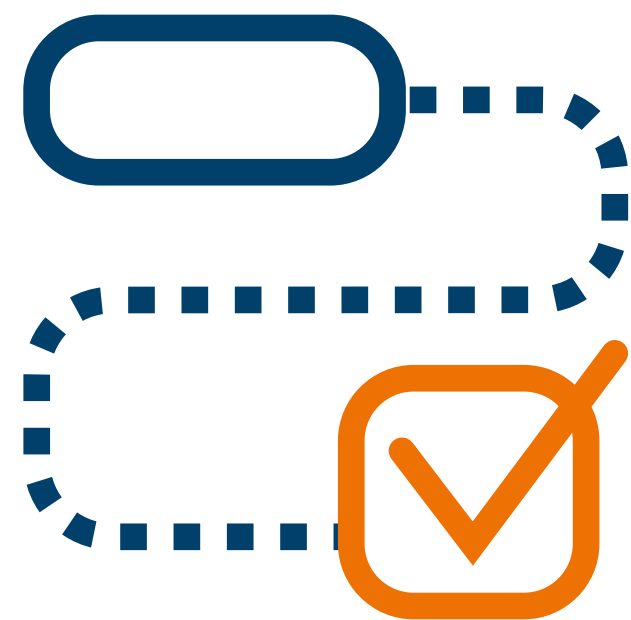


Post-sales Assistance

Services



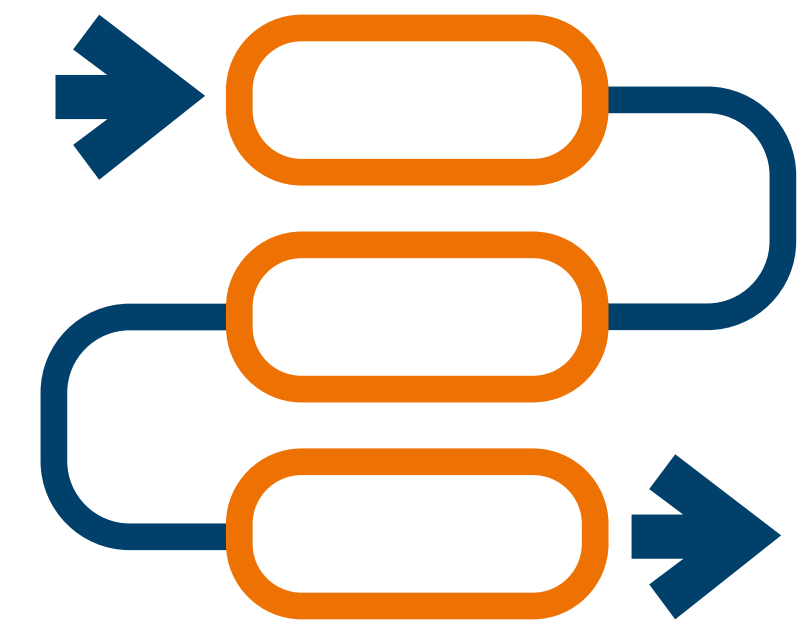
We have capabilities & experience and with our highly experienced professional staff we provide for:



Feasibility Studies



Consulting



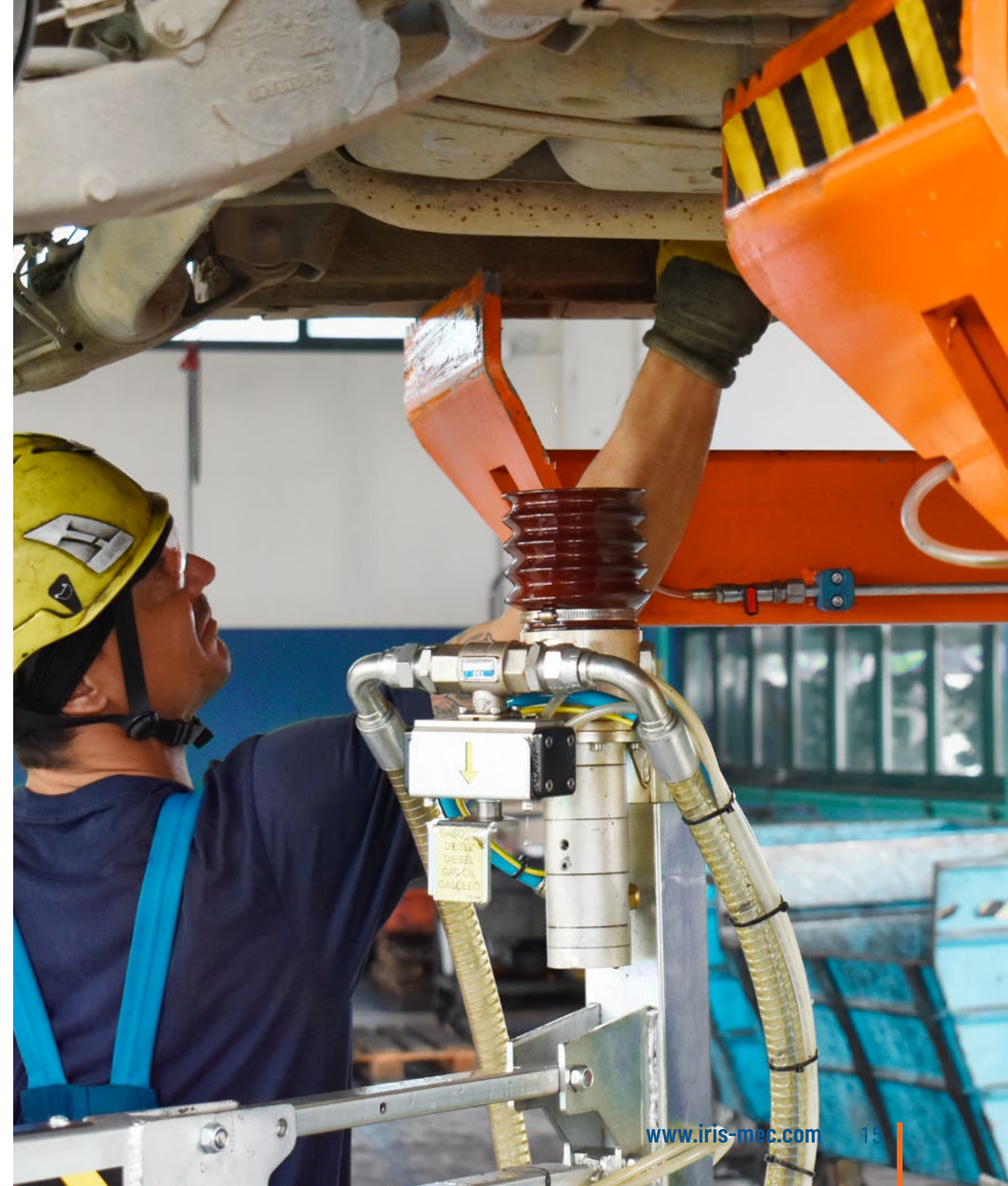
Engineering

Plants

- ✔ Environmental car recycling
- ✔ Effective work
- ✔ Clean car recycling plants
- ✔ Political regulation – EU directive

Plants Overview

[https://www.iris-mec.it/IM_sharing/Video/Plants_Overview_S.mp4]



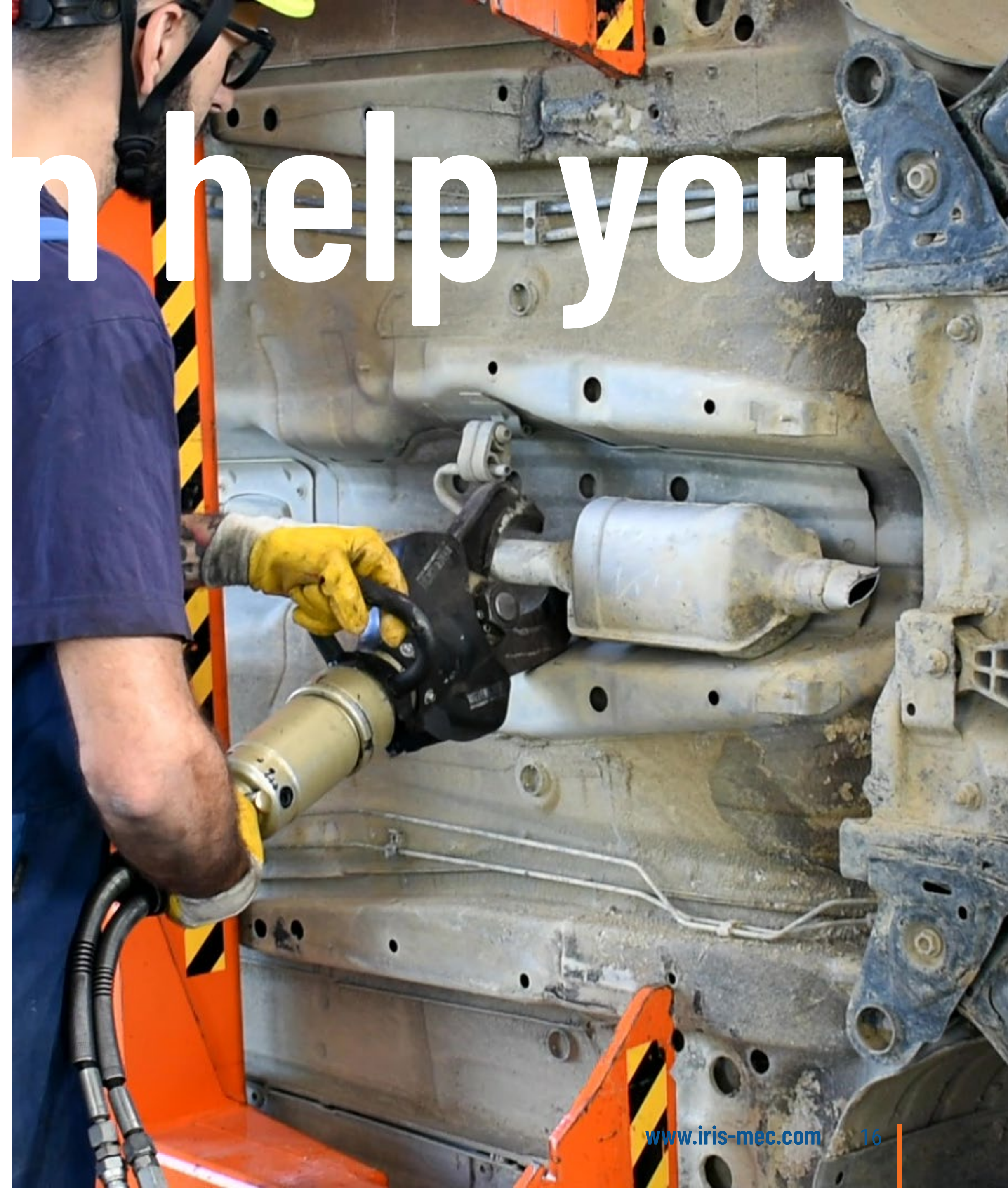
How we can help you

We have the products to work in right way

- ☑ Depollution equipment
- ☑ Dismantling equipment
- ☑ Storage equipment
- ☑ We can support your activities to implement such regulation

Products Overview

[https://www.iris-mec.it/IM_sharing/Video/Products_Overview_S.mp4]



Network

Sales / Assistance network

Europe

Austria	Norway
Belgium	Poland
Bulgaria	Portugal
Czech Republic	Republic of San Marino
Finland	Romania
France	Russia
Germany	Slovakia
Greece	Spain
Hungary	Sweden
Italy	Swiss
Malta	UK
The Netherlands	

Asia

China
India
Iran
Japan
Taiwan
U.A.E.

Oceania

Australia
New Caledonia
New Zealand

North America

Canada
U.S.A.

South America

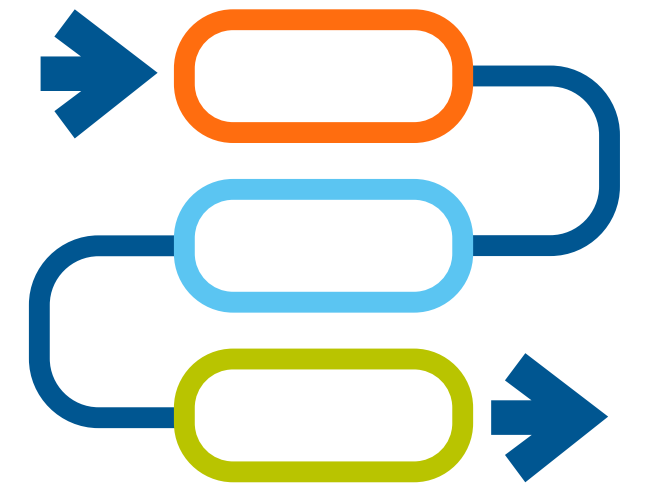
Mexico



Quality requirements for our distributors

- ✓ Training and certification course
- ✓ Continuous updating
- ✓ Total knowledge of our products and services
- ✓ Guarantee a high quality service
- ✓ Product installation service in work areas
- ✓ Responsive and effective technical support

Main projects & contractors



BMW Group - Recycling and Dismantling Centre

📍 München - Germany

Automatic System with conveyor to press the wheels of the car. Wheel press machine SR - Flipper with tailored solution with automatic feed and collecting of broken rims. Up-grade of existing depollution system including remote control storage for the weighting on tanks.



Great Wall Cars - Renewable Resources

📍 Hebey City - China

Complete drainage stations with lift for cars, complete system for car depollution with tank drainage system for the recovery of two fuels. Tank storage system, machine to recover Methan and LPG, cutter for catalyst complete of power unit and machine to cut and recover the front glass.



MB GTC Mercedes-Benz - Gebrauchtteile Center

📍 Neuhausen A.D.F. - Germany

3 complete sets CNT & CUTTER - Cutter for catalyst complete of CNT power unit.
50 Storage racks for vehicles.
Complete supply of ramps for the cars stocking.



Shaanxi Province Scrapped Automobile Recycling Co.

📍 Shaanxi - China

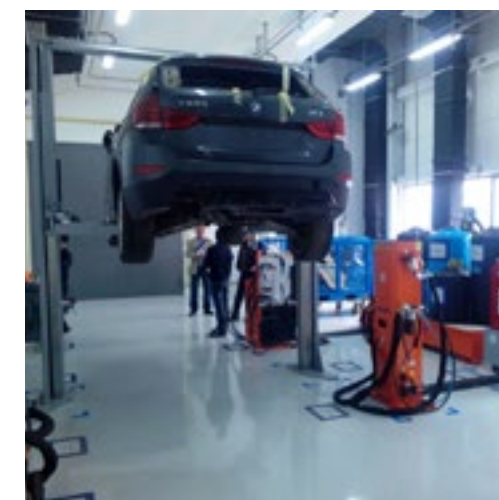
Design and construction of a new de-pollution and dismantling plant to process up to 150 cars per day in China at Shaanxi Province Scrapped Automobile Recycling Co. in cooperation with Beijing PMI Technology Co. Ltd. In the new installation the products of the EC flexible line: trolleys system for IBC VS depollution and PRT EC disassembly and CRL EC.



Schwarz Rohstoff GmbH

📍 Germany

CDR-RC, robot for the mechanical disassembly of vehicles, designed to perform an easy, quick and totally safe separation of materials.

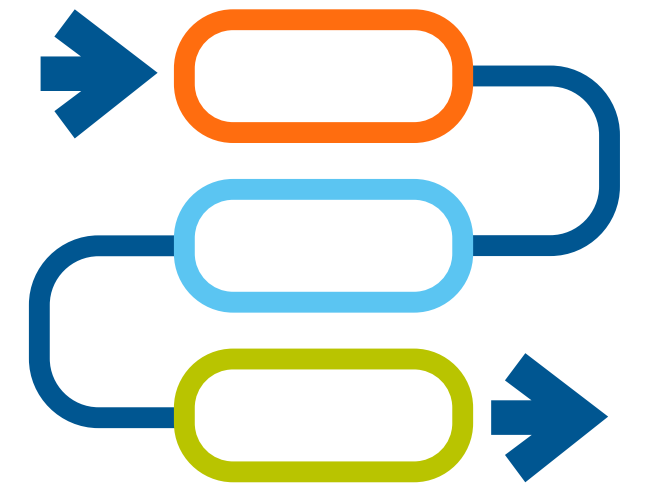


BMW Brilliance Automotive LTD

📍 Shenyang - China

Complete system for car depollution with tank drainage system for the recovery of two fuels. Tank storage system, machine to recover Methan and LPG, cutter for catalyst complete of power unit and machine to cut and recover the front glass.

Main projects & contractors



BMW Group Recycling and Dismantling Centre UK

📍 *United Kingdom*

Wheel press machine SRX 11 with tailored solution for special rims.



EMR - European Metal Recycling

📍 *Different locations in United Kingdom*

EMR is a global leader in metal recycling. 10 RBT to different sites in U.K.

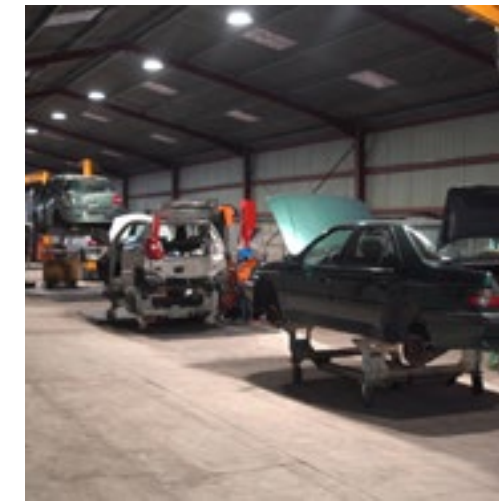
The RBT - revolving system for car, allows full and safe dismantling of mechanical parts.



CPM - Dürr Italia

📍 *Italy*

Complete drainage stations for car depollution (fluids and fuels recovery) with lift. Equipment for separation of the tire / rim, multifunction cutters for catalyst and windscreen, airbag deactivator and tank storage system.



Rubio

📍 *France*

BF Line - The BF line is a selection of products designed as an alternative to the cars handling with forklifts, perfect solution for depolluting and dismantling areas with limited manoeuvring spaces. The cars handling takes place on a trolley by manual push or electric pallet truck and then the cars are placed at the base of the mobile lifts complete of a base accessible to trolleys.



Derichebourg Enviromental Services

📍 *France*

15 complete drainage stations with PM (lift for cars), ISE (depollution system for car), PFT (depollution system for fuel tanks) CNT & CUTTER (Cutter for catalyst complete of power unit), etc. 7 complete drainage stations in container with ramp, depollution system for cars for all liquids and fuels and storage tanks.

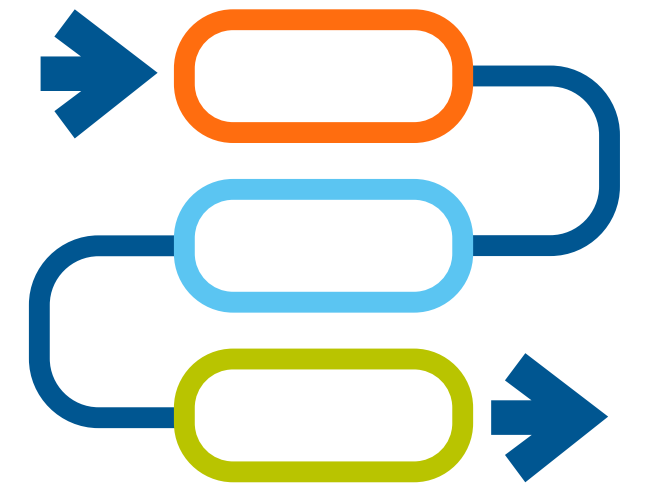


Purfer Recycling Center

📍 *France*

5 complete drainage stations with PM (lift for cars), ISE (depollution system for car), PFT (depollution system for fuel tanks) CNT & CUTTER (Cutter for catalyst complete of power unit), etc. 5 complete drainage stations in CONTAINER with ramp, depollution system for cars for all liquids and fuels and storage tanks.

Main projects & contractors



Tata Motors
CERO - Mahindra Group
Ramky Group
📍 *India*



FHU Dymek
📍 *Poland*

Innovative project with EU Funds - INNOWACYJNY SYSTEM PRODUKCJI. Innovative system model ELV.IT & ELV.ST for car dismantling station.



Remat Holding Company
📍 *Romania*

1 complete drainage stations in CONTAINER with ramp, depollution system for cars for all liquids and fuels and storage tanks.



FCA - FIAT CHRYSLER AUTOMOBILES
📍 *Melfi, Cassino, Pomigliano, Kragujevac (SRB)*

MRGA - Automatic station for the recovery and safety of LPG tanks



Autodemolizione Giorgi Angelo
📍 *Italy*

Equipment with 4.0 technologies for M2M (machine-to-machine) communication, constant vehicle movement, modular solutions that can be easily expanded and adapted to new production needs. Improvement of internal logistics and optimisation of processes.

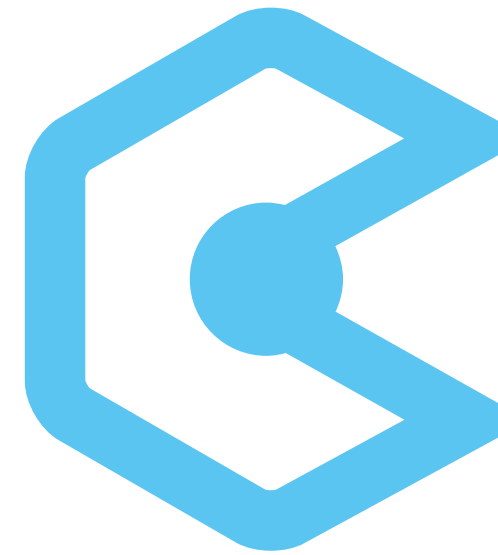
Product families



Depollution Equipment



Equipment for the recovery of residual fluids, oils and fuels



Dismantling Equipment



Disassembly and recovery equipment of the mechanical parts of the vehicle



Storage Equipment

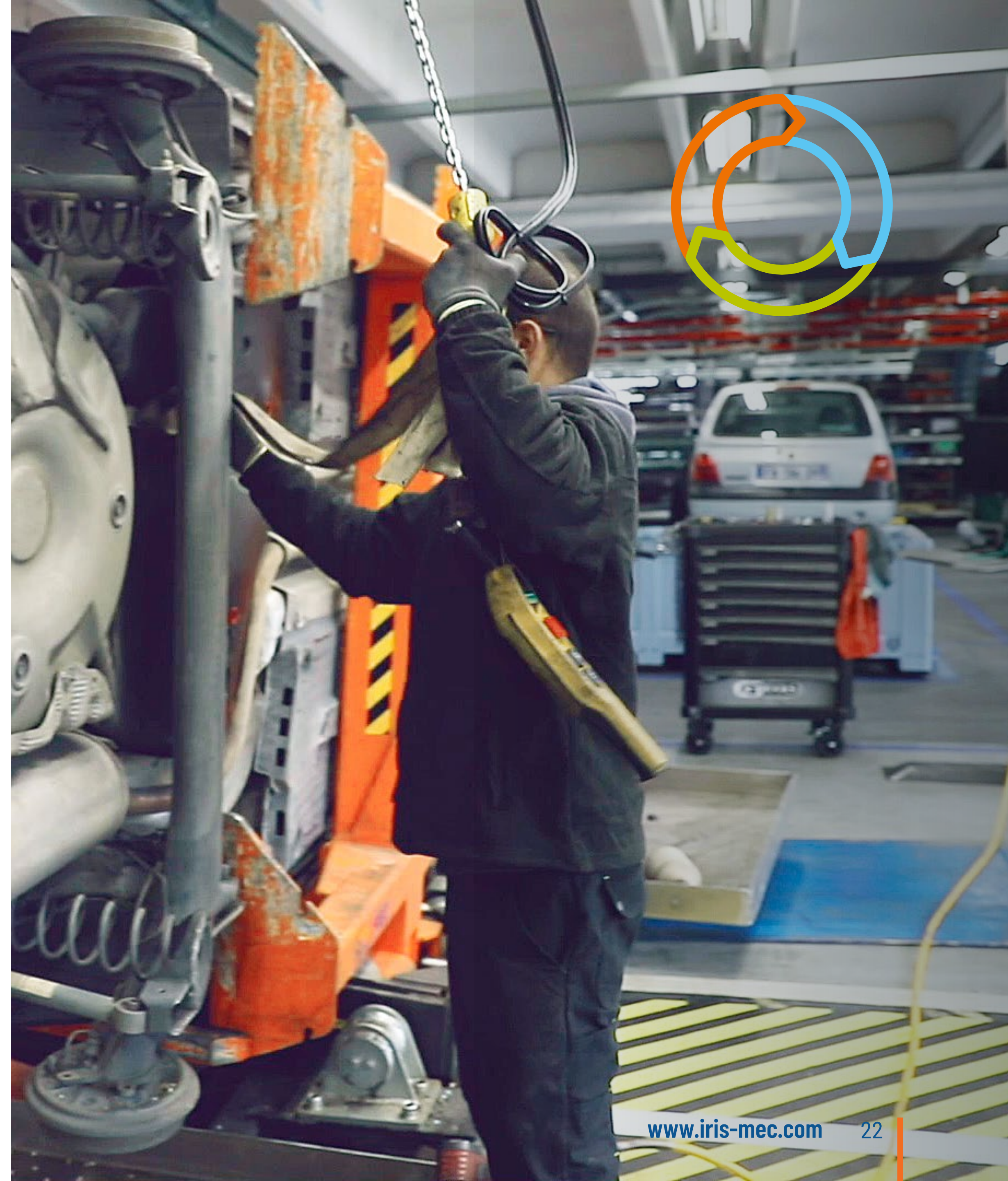


Containers and supports for storing and organizing the elements derived from the previous phases

Layout standard

Standard system

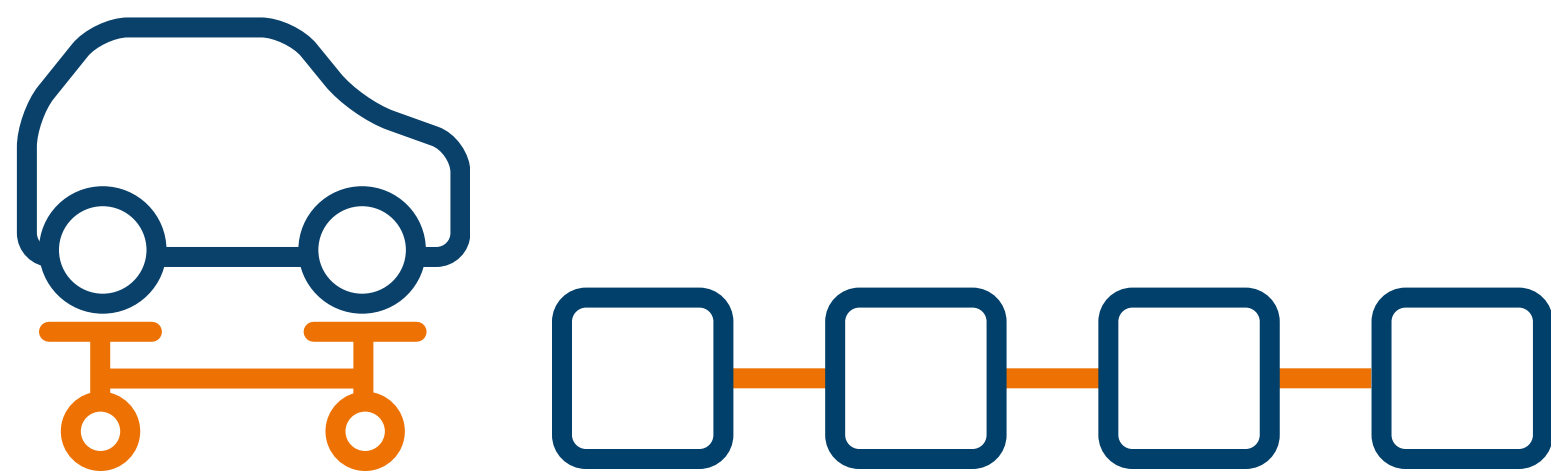
- ✔ Similar equipment grouped into areas
- ✔ Vehicle moved by a forklift
- ✔ Dismantled materials and parts moved by forklift



Flexible / Hybrid

Flexible Line System

- ✓ Equipment spread in a line
- ✓ Vehicle placed on a trolley and moved by an electric transpallet
- ✓ Dismantled materials and parts moved by a conveyor



Video index



BMW Group - Recycling and Dismantling Centre

📍 München - Germany



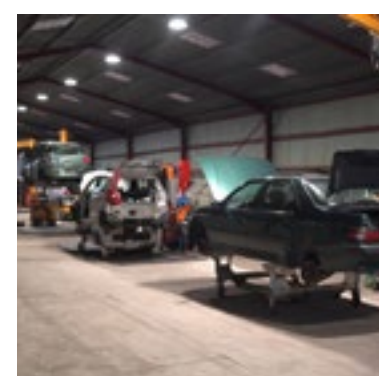
Schwarz Rohstoff GmbH

📍 Germany



Shaanxi Province Scrapped Automobile Recycling Co.

📍 Shaanxi - China



Rubio

📍 France

Plants Overview

Products Overview

Flexible / Hybrid

Thank you for your attention



How to get in touch with us?

Iris-Mec Srl

Via Pessina, 15 - 42028 Poviglio (Re) - Italy

P: +39 0522.481047

M: commerciale@iris-mec.it

www.iris-mec.com

<https://linktr.ee/irismec>