

Product Lines

Road Traction Analyzer-TA 100



Digitally Measure "Tire Contact Pad"

The Road Traction Analyzer is a cutting-edge tire tread scanning tool designed for automotive service centers. It utilizes advanced camera and laser technology to provide instant and precise measurements of tread depth. Its robust design ensures durability in demanding workshop environments, complemented by an effective air cleaning system that maintains optimal performance of its optical and laser components.



TA 100



Waterproof Grade



Deep Learning



Vehicle
Identification



Global Shutter



Infrared laser



Pass-by Measure

www.treadplus.com

Features

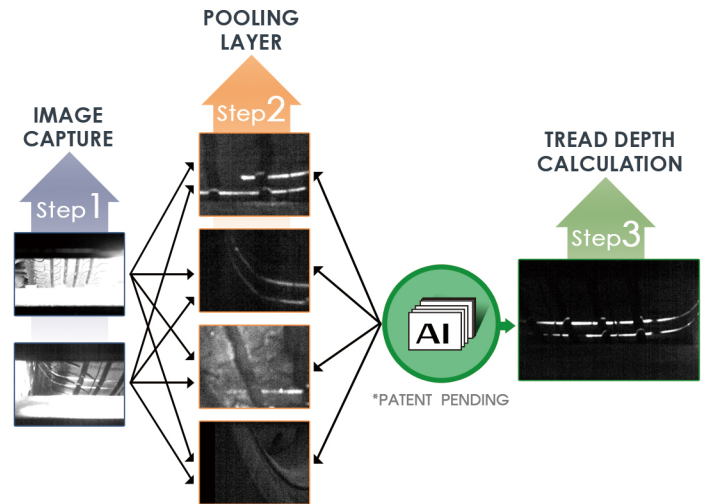
- Instant Measurement with Camera and Laser Technology**
 Provides accurate and consistent results, minimizing human error.
- Robust Design**
 Built to withstand harsh workshop environments.
 Durable and reliable for long-term use.
- Air Cleaning System**
 Keeps the scanning components clean and free of debris.
 Ensures accurate measurements by maintaining the integrity of the optical and laser systems.
- Identifies Abnormal Tire Wear**
 Detects issues caused by misalignment, over/under tire inflation, worn suspension, or belt shift and failure.
 Helps in diagnosing underlying problems that affect tire wear and vehicle safety.
- User-Friendly Display and Analysis**
 Presents easy-to-understand analysis for customers.
 Educates customers on the condition of their tires and the need for any corrective actions.
- Cloud-Based or Offline Platform**
 Offers flexibility in data management and accessibility.
 Allows for cloud storage and real-time data access or offline operation for environments without constant internet access.

Report



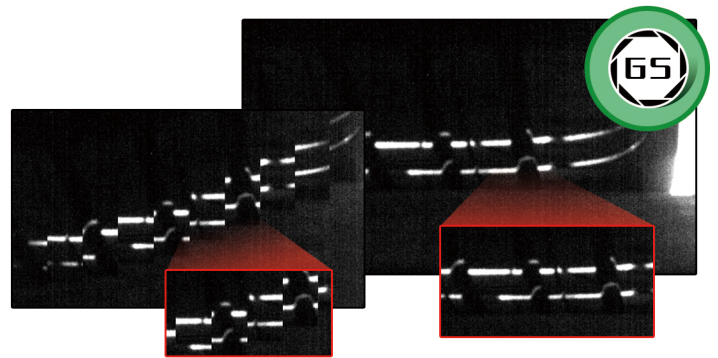
Customize the report with color highlighted readings.

Deep Learning



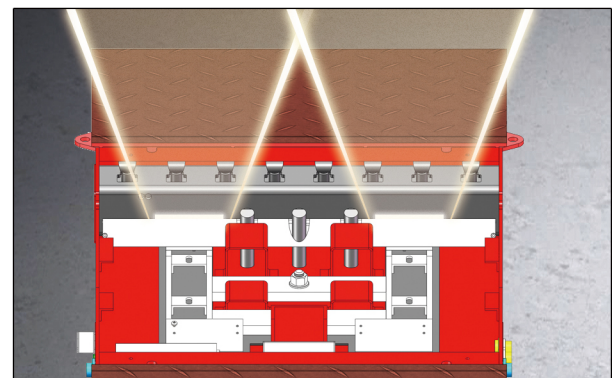
Convolutional Neural Networks based self-learning algorithm improves result over time.

Global Shutter



All pixels of the array are exposed simultaneously ideal for fast moving events.

Infrared Laser Measuring Method



Utilizes high-precision camera and laser technology to measure tread depth instantly.