

Product Lines

## Wheel Aligner-Artemis Series



### The Revolutionary Wheel Aligner from TREADPLUS

**NEW  
2024**

Artemis is the latest innovation in wheel alignment technology from TREADPLUS, designed to bring precision, efficiency and versatility to automotive service centers.

Combining cutting-edge technology with user-friendly features, Artemis is set to redefine the standards of wheel alignment.



**Artemis Y**



Linux Core System



Android User Interface and Display Unit



Foldable and Portable Design



Customizable Camera Configuration

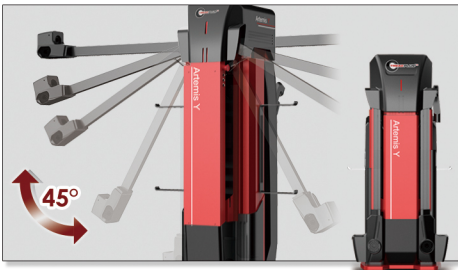


Flexible Database Options

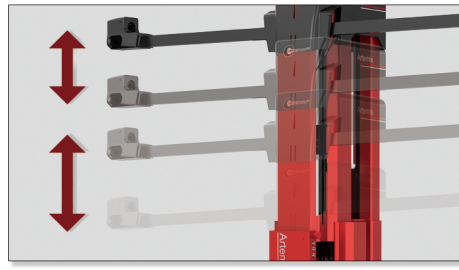
[www.treadplus.com](http://www.treadplus.com)

## Why Choose Artemis?

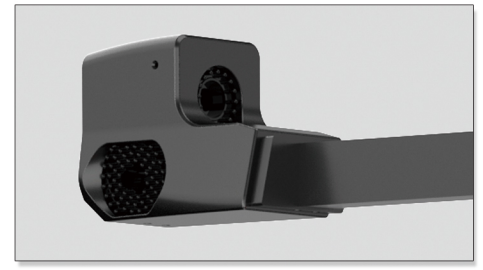
Artemis stands out in the market with its unique combination of advanced technology, user-friendly design, and practical features. Whether you run a busy automotive service center or a compact garage, Artemis offers the flexibility, reliability and precision you need to deliver top-notch service to your customers. Embrace the future of wheel alignment with Artemis from TREADPLUS.



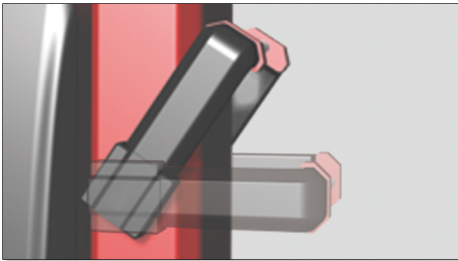
Foldable and Portable Design



Auto Tracking



Customizable Camera



Brake Structure



User-Friendly

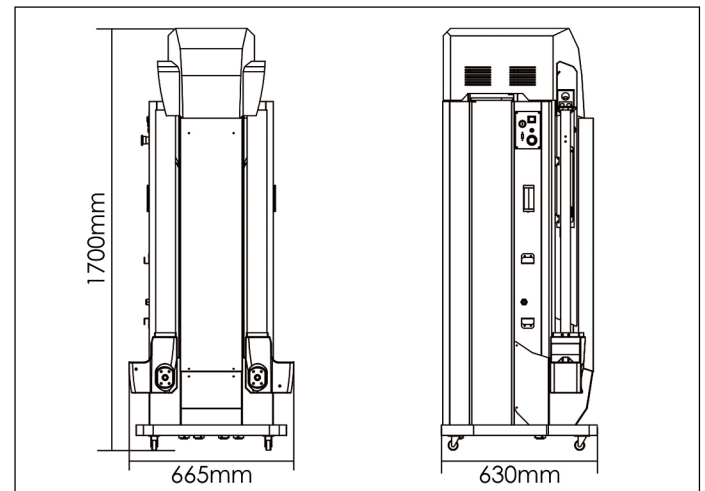


Android User Interface and Display Unit

## Configuration

Artemis Series	Y	Z
No. Cameras	3	5
Camera Beam	2 Pcs	2 Pcs
Pixels on Camera	8MP Per Camera	
OS	Linux/Android	
User Control	Tablet or Keyboard/Mouse	
Storage	Foldable	
Post Sytle	Automatic w/Auto Tracking	
Battery Powered	Optional	
Wheel Clamp	Yes	
Tire Clamp	Optional	

## Dimensions



For more information regarding to our products please visit [www.treadplus.com](http://www.treadplus.com)

Copyright © 2024 KJC Engineering Canada Inc.  
Printed in CANADA 2024/07