

■ ■ ■ ■ ■ PROFESSIONAL
CAR BODY
CONSUMABLES



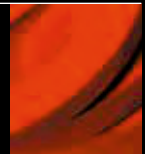
WIDE RANGE OF CAR BODY CONSUMABLES



About us **2**

CAR BODY CONSUMABLES

<u>Abrasives</u>	4
<u>Surface cleaning</u>	19
<u>Masking</u>	22
<u>Polishing</u>	30
<u>Sealants and adhesives</u>	41
<u>Protective compounds</u>	45
<u>Gluing tapes</u>	48
<u>Accessories</u>	52
<u>RADEX R.C.S</u>	57



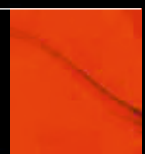
EQUIPMENT AND PROTECTIVE CLOTHING

<u>Equipment</u>	59
<u>Pneumatic tools</u>	72
<u>Protective clothing</u>	82



CAR BODY COATINGS FOR REPAIR

<u>Putties</u>	86
<u>Primers</u>	92
<u>Clearcoats</u>	97
<u>Aerosols</u>	101



STAR

<u>Spray guns</u>	105
<u>Filters</u>	106
<u>Accessories</u>	107



ABOUT US

RADEX presents a full range of high-tech materials, equipment and pneumatic tools for automotive refinishing.

Our goal is to promote the RADEX program around the world

We have created a car-repair enterprise service system, enabling customers to improve efficiency, and save time and money.



THE MAIN TASK

A comprehensive proposal for the provision of car repair consumables, equipment and pneumatic tools, to optimize the car repair business, bring it to the highest level, improve the quality of maintenance and increase productivity, while minimizing maintenance costs and significantly reducing transport costs.

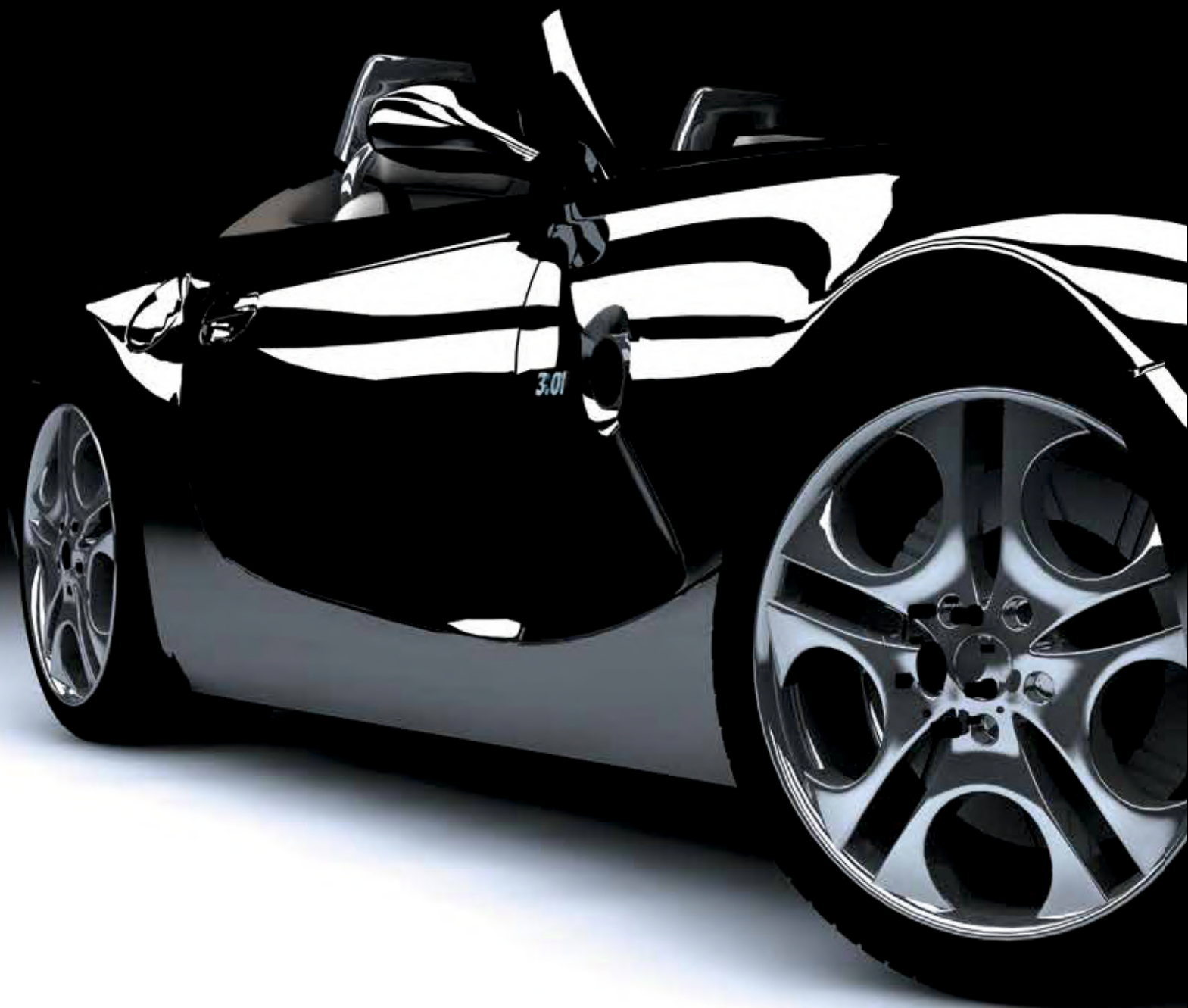
ADVANTAGES

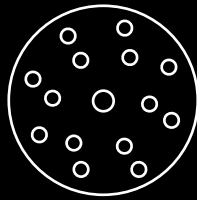
- Wide range of goods
- Excellent quality of materials
- Comprehensive customer support (technical, informative and advertising)
- Flexible pricing policy
- Established logistic systems

Cooperation with RADEX will provide the company with quality and affordable materials, necessary tools and equipment for an integrated approach in work on elimination of point defects, preparation for painting and finishing surfaces.



ABRASIVES





The range of RADEX abrasive materials includes various plane, 3-D and chemical abrasives with a set of accessories necessary for work. The increased requirements of body shop experts and modern level of materials for car repair applied in Europe and worldwide have been considered while

developing these abrasive materials. The wide range of backings is used and individually adapted for every possible need of surface preparation. Thus, the buyer can choose abrasive materials of every possible form and size both with dust extraction and without.





GOLD SERIES

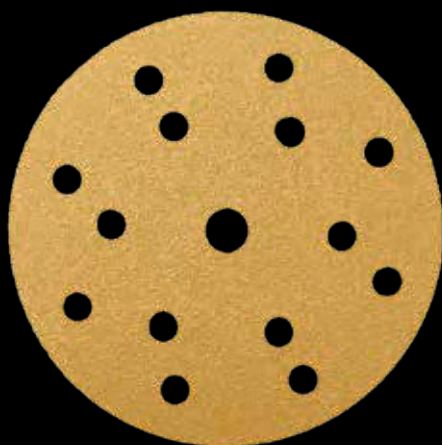
RADEX Gold abrasive materials are developed for machine and manual sanding of different types of surfaces and are recommended for rust removal, sanding putties and primers prior to applying top coats. RADEX Gold abrasive materials are made from artificially grown aluminum oxide mineral which is not losing its durability and keeping its excellent cutting ability during all life cycle. The mineral is put on specially processed paper backing combining the efficiency of plastic backing with the flexibility of paper backing.

The combination of high quality materials with modern manufacturing makes RADEX Gold abrasive materials one of the most cost-effective abrasives on the market. They are specially designed for fast cutting and consistent finish without clogging.

GOLD ABRASIVE PAPER DISCS WITH VELCRO, 15 HOLES

Abrasive paper discs with holes for dust extraction with premium quality aluminum oxide mineral combining high abrasive ability and high wear resistance.

Function: abrasive paper discs with holes are developed for continuous effective sanding of metals, paint materials, putties, plastics, wood, etc., with use of sanding equipment with dust extraction system. They are recommended to use in such areas as repair and conveyor car painting, wood and metal working, manufacture of furniture, household appliances, etc.



Art.	Size	Grit	Package
553601	Ø 150 mm	P40	50/400 pcs.
553602		P60	
553603		P80	
553604		P100	
553605		P120	
553606		P150	100/800 pcs.
553607		P180	
553608		P220	
553609		P240	
553610		P280	
553611		P320	
553612		P360	
553613		P400	
553614		P500	
553615		P600	
553616		P800	
553617		P1000	50/400 pcs.
553618		P1200	
553619		P1500	
553620		P2000	

Perfect in combination with Random orbital sander (art. 420025, art. 420050), 2-Hand random orbital sander (art. 420252) or 2-Hand gear-driven sander (art. 420450, art. 420452). For use with RADEX universal back-up pad, art. 500002, or RADEX multihole back-up pad, art. 500556 (see "Pneumatic tool" section).

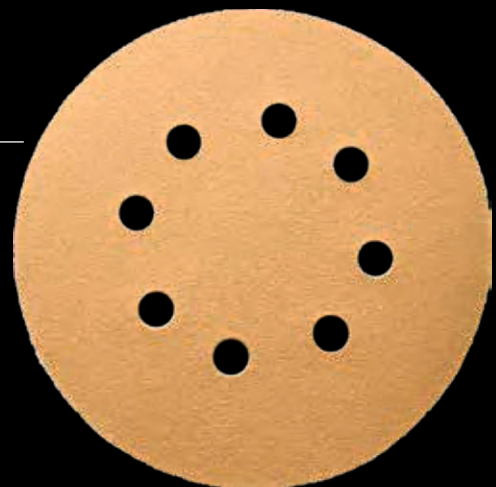


GOLD ABRASIVE PAPER DISCS WITH VELCRO, 8 HOLES

Abrasive paper discs with holes for dust extraction with premium quality aluminum oxide mineral combining high abrasive ability and high wear resistance.

Function: abrasive paper discs with holes are developed for continuous effective sanding of metals, paint materials, putties, plastics, wood, etc., with use of sanding equipment with dust extraction system. They are recommended to use in such areas as repair and conveyor car painting, wood and metal working, manufacture of furniture, household appliances, etc.

Art.	Size	Grit	Package
512501	Ø 125 mm	P40	50/400 pcs.
512502		P60	100/800 pcs.
512503		P80	
512504		P100	
512505		P120	
512506		P150	
512507		P180	
512508		P220	
512509		P240	
512510		P280	
512511		P320	
512512		P360	
512513		P400	
512514		P500	
512515		P600	





GOLD ABRASIVE PAPER ROLLS

Abrasive paper rolls with premium quality aluminum oxide mineral combining high abrasive ability and high wear resistance.

Function: abrasive paper in rolls is the most efficient type of material from the cost-effectiveness point of view developed for continuous sanding of metals, paint materials, putties, plastic, wood, etc., by hand or by hand blocks. They are recommended to use in repair and conveyor car painting, wood and metal working, manufacture of furniture, household appliances, etc.

Art.	Size	Grit	Package
552040	115 mm x 50 m	P40	1/4 pcs.
552060		P60	1/8 pcs.
552080		P80	
552100		P100	
552120		P120	
552150		P150	
552180		P180	
552220		P220	
552240		P240	
552280		P280	
552320		P320	
552360		P360	
552400		P400	
552500		P500	
552600		P600	



GOLD 2 ABRASIVE PAPER ROLLS

High quality abrasives in rolls. Open type abrasive with special coatings makes good cutting on many surfaces. Good price and performance balance saving money in the process.

Art.	Size	Grit	Package
556060	115 mm x 50 m	P60	1/4 pcs.
556080		P80	1/5 pcs.
556100		P100	
556120		P120	
556150		P150	
556180		P180	
556220		P220	
556240		P240	
556280		P280	
556320		P320	
556360		P360	
556400		P400	
556500		P500	
556600		P600	

GOLD ABRASIVE PAPER SOFT ROLLS

Abrasive paper soft rolls with perforation with premium quality aluminum oxide mineral combining high abrasive ability, high wear resistance and flexibility. Rolls are supplied in special dispenser boxes for convenience in use and storage.

Function: abrasive paper soft rolls are intended for use in difficult areas, for shaping and edge sanding. An ideal fit for hand sanding in difficult areas prior to applying top coats.

Art.	Size	Grit	Package
555306	114 mm x 25 m	P180	1/4 pcs.
555308		P240	
555310		P320	
555312		P400	
555313		P500	
555314		P600	
555315		P800	





GOLD ABRASIVE PAPER SHEETS WITH VELCRO, NO HOLES

Function: abrasive paper sheets without holes are developed for continuous effective sanding of metals, paint materials, putties, plastic, wood, etc., with use of sanding equipment without dust extraction system. They are recommended to use in areas such as repair and conveyor car painting, wood and metal working, manufacture of furniture, household appliances, etc.

Art.	Size	Grit	Package
555202	70 x 420 mm	P60	50/400 pcs.
555203		P80	
555204		P100	
555205		P120	
555206		P150	
555207		P180	
555208		P220	100/800 pcs.
555209		P240	
555210		P280	
555211		P320	
555212		P360	
555213		P400	
555214		P500	

GOLD ABRASIVE PAPER SHEETS

Function: abrasive paper sheets without holes are developed for continuous effective sanding of metals, paint materials, putties, plastic, wood, etc., with use of sanding equipment without dust extraction system. They are recommended to use in areas such as repair and conveyor car painting, wood and metal working, manufacture of furniture, household appliances, etc.

Art.	Size	Grit	Package
555003	230 x 280 mm	P80	50/1000 pcs.
555004		P100	
555005		P120	
555006		P150	
555007		P180	
555008		P220	
555009		P240	
555010		P280	
555011		P320	
555012		P360	
555013		P400	
555014		P500	
555015		P600	

GOLD ABRASIVE PAPER SHEETS WITH VELCRO AND HOLES

Function: abrasive paper sheets with holes are developed for continuous effective sanding of metals, paint materials, putties, plastic, wood, etc., with use of sanding equipment with dust extraction system. Velcro system provides ideal attachment for the sheets to the equipment and therefore high productivity when sanding putties and primers. They are recommended to use in areas such as repair and conveyor car painting, wood and metal working, manufacture of furniture, household appliances, etc.

Art.	Size	Grit	Package
550802	70 x 127 mm, 8 holes	P60	100/800 pcs.
550803		P80	
550804		P100	
550805		P120	
550806		P150	
550807		P180	
550808		P220	
550809		P240	
550810		P280	
550811		P320	
550812		P360	
550813		P400	
550814		P500	
551802	70 x 198 mm, 8 holes	P60	100/800 pcs.
551803		P80	
551804		P100	
551805		P120	
551806		P150	
551807		P180	
551808		P220	
551809		P240	
551810		P280	
551811		P320	
551812		P360	
551813		P400	
551814		P500	
551402	70 x 420 mm. 14 holes	P60	100/800 pcs.
551403		P80	
551404		P100	
551405		P120	
551406		P150	
551407		P180	
551408		P220	
551409		P240	
551410		P280	
551411		P320	
551412		P360	
551413		P400	
551414		P500	



CERAMIC ABRASIVES

CERAMIC FILM DISCS ARE DESIGNED TO GET MUCH FASTER CUTTING COMPARED TO OTHER PREMIUM ABRASIVES IN THE MARKET. SPECIAL CERAMIC GRAINS WITH THE BEST FILM TECHNOLOGY FOR FAST CUTTING AND EXTRA LONG LIFE. SPECIAL PATTERN COLLECTS DUST MORE EFFICIENTLY FOR A CLEANER WORKING ENVIRONMENT. THE PRODUCT GUARANTEES SANDING WITHOUT CLOGGING THE SANDING SURFACE.

PURPLE CERAMIC ABRASIVE DISCS, 14+1 HOLES

Art.	Size	Grit	Package
575002	Ø 150 mm	P60	100/1000 pcs.
575003		P80	
575005		P120	
575006		P150	
575007		P180	
575008		P220	
575009		P240	
575011		P320	
575013		P400	
575014		P500	
575015		P600	
575016		P800	

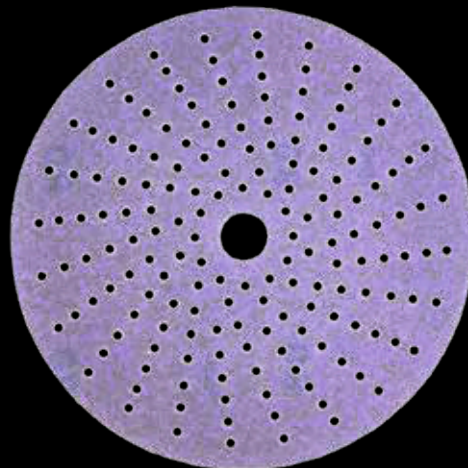


Perfect in combination with Random orbital sander (art. 420025, art. 420050), 2-Hand random orbital sander (art. 420252) or 2-Hand gear-driven sander (art. 420450, art. 420452). For use with RADEX universal back-up pad, art. 500002, or RADEX multihole back-up pad, art. 500556 (see "Pneumatic tool" section).



MULTI-AIR CERAMIC ABRASIVE DISCS

Art.	Size	Grit	Package
565003	Ø 150 mm	P80	50/500 pcs.
565005		P120	
565006		P150	
565007		P180	
565008		P220	
565009		P240	
565011		P320	
565013		P400	
565014		P500	
565015		P600	
565016		P800	



Perfect in combination with Random orbital sander (art. 420025, art. 420050), 2-Hand random orbital sander (art. 420252) or 2-Hand gear-driven sander (art. 420450, art. 420452). For use with RADEX multihole back-up pad, art. 500556 (see "Pneumatic tools" section).



CERAMIC NET ABRASIVES

CERAMIC NET ABRASIVES PROVIDES BETTER PRODUCTIVITY AND PROFITABILITY SINCE CLOGGING IS MINIMIZED, OFFERING HIGHER PERFORMANCE AND BETTER SURFACE FINISHING. NET BACKING ENABLES FULL SURFACE DUST EXTRACTION THANKS TO THE OPEN BACKING STRUCTURE. THEY ALSO PROVIDE A HEALTHIER WORK ENVIRONMENT, WHERE LESS TIME AND EFFORT IS NEEDED FOR CLEANING UP WHILST THE WORKER IS PROTECTED FROM DANGEROUS SANDING DUST.

CERAMIC NET ABRASIVE DISCS

Art.	Size	Grit	Package
559903	Ø 150mm	P80	50/400 pcs.
559905		P120	
559907		P180	
559909		P240	
559911		P320	
559913		P400	
559914		P500	
559915		P600	

Perfect in combination with Random orbital sander (art. 420025, art. 420050), 2-Hand random orbital sander (art. 420252) or 2-Hand gear-driven sander (art. 420450, art. 420452).
For use with RADEX universal back-up pad, art. 500002, or RADEX multihole back-up pad, art. 500556 (see "Pneumatic tools" section).



CERAMIC NET ABRASIVE SHEETS

Art.	Size	Grit	Package
559703	70x420 mm	P80	50/400 pcs.
559705		P120	
559707		P180	
559709		P240	
559711		P320	
559713		P400	



FLEX ABRASIVES

RADEX FLEX ABRASIVES HAS A UNIQUE GRAIN STRUCTURE ON AN INNOVATIVE LATEX BACKING WHICH IS IDEAL FOR CURVED TOPS AND ROUND PARTS. IT GIVES AN EXTREMELY UNIFORM AND SHALLOW SANDING SCRATCH WITH MAXIMUM CONTROL. A GREAT TIME SAVER BOTH DURING THE PREP AND DURING FINISHING, WHERE WE HAVE THE ADVANTAGE OF DRY SANDING.

Function: The innovative latex backing and the unique grain structure result in extremely uniform and shallow scratches. Maximum control during primer and topcoat sanding allows up to 50% time saving. RADEX FLEX abrasives prevents potential problems in the rest of the sanding process.



FLEX ABRASIVE DISCS

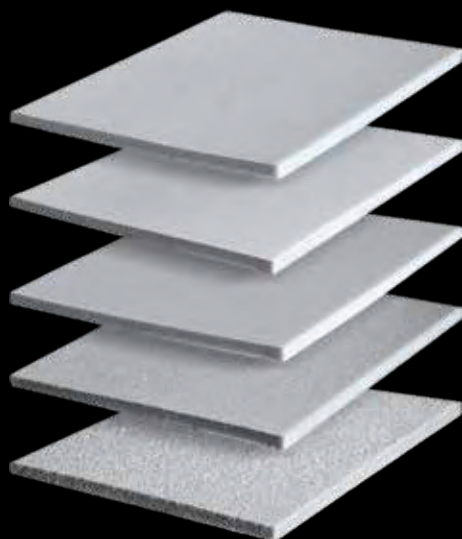
Art.	Size	Color	Grit	Package
531500	Ø 152mm	Brown	P1500	25/500 pcs.
532500		Light green	P2500	
533000		Grey	P3000	
532575	Ø 75mm	Light green	P2500	25/800 pcs.
533075		Grey	P3000	

Perfect in combination with Random orbital sander (art. 420025, art. 420050), 2-Hand random orbital sander (art. 420252) or 2-Hand gear-driven sander (art. 420450, art. 420452).
Ø 152mm discs for use with RADEX universal back-up pad, art. 500002, or RADEX multihole back-up pad, art. 500556. Ø 75mm discs for use with RADEX PAD Hook-up 75mm, art. 421555 (see "Pneumatic tools" section).



FLEX ABRASIVE SHEETS

Art.	Size	Color	Grit	Package
330400	130 x 170 mm	Sky	P600	25/250 pcs.
330800		Lemon	P800	
331200		Orange	P1500	

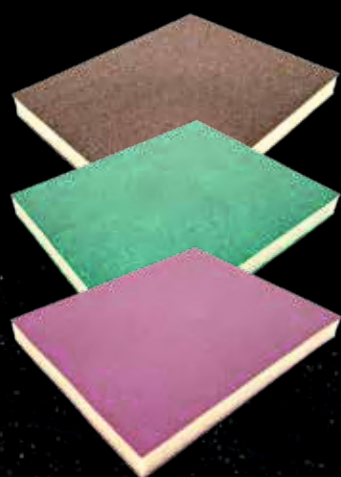


ABRASIVE SPONGES

Abrasive sponges with silicon carbide and aluminum oxide minerals combine extremely high abrasive capability and wear resistance. Soft polyurethane backing provides full contact of abrasive with the working surface whatever its shape.

Function: abrasive sponges are intended for continuous effective hand sanding of metals, paint materials, putties, plastic, wood, etc. Abrasive sponges can be used wet or dry in difficult areas, for shaping and edge sanding. They are more effective than any traditional sanding paper. Abrasive sponges are produced in 5 versions: Medium, Fine, Superfine, Ultrafine and Microfine. Medium and Fine are used for sanding before primer application, Superfine – for finishing primers before acrylic and dark color applications, Ultrafine and Microfine – for finishing primers before critical color applications such as light metallic and pearls.

Art.	Size	Grit	Package
320180	140 x 115 mm	Medium	20/80 pcs.
320280		Fine	
320400		Superfine	
320600		Ultrafine	
320800		Microfine	

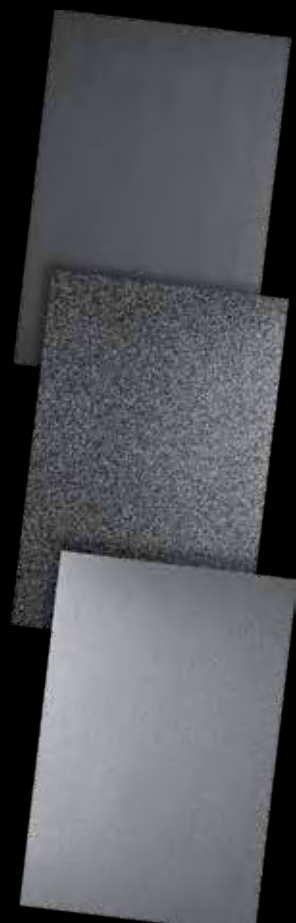


DOUBLE SIDED ABRASIVE SPONGES

A flexible manual solution for shaped and profiled surfaces that are challenging to reach with machine, such as bumpers and door handle cutouts. Thanks to innovative system technology, the pad is coated on both sides and can be used on wet or dry surfaces. It is available in three grits to accommodate the complete sanding process!

Art.	Size	Grit	Colour	Package
333001	98 x 120 mm	P400-P500	Brown	1/100 pcs.
333002		P600-P800	Green	
333003		P1000-P1200	Violet	





WPF WATERPROOF ABRASIVE SHEETS

Waterproof abrasive sheets are made of latex paper with the use of silicon carbide and aluminum oxide minerals, combining extremely high abrasive capability and wear resistance.

Function: waterproof abrasive sheets can be used wet or dry for various surface preparations in such areas as OEM, Automotive Aftermarket, Wooden and Metal industries, etc.

Features:

- Ideally sieved mineral
- Increased mineral durability
- High backing elasticity and resistance for curling
- Possible to use wet or dry

Art.	Size	Grit	Package
310101	230 x 280 mm	P80	25/500 pcs.
310102		P100	
310103		P120	
310104		P150	
310105		P180	
310106		P220	
310107		P240	
310108		P280	
310109		P320	50/1000 pcs.
310110		P360	
310111		P400	
310112		P500	
310113		P600	
310114		P800	
310115		P1000	
310116		P1200	
310117		P1500	
310118		P2000	



FIBER DISCS

High-performance durable discs with aluminum oxide and zirconium minerals, up to date resin binders and fiber backing. Due to advanced technologies implemented in manufacturing of fiber discs they are less brittle, leading to to increased productivity and longer life.

Function: fiber discs are intended for grinding different types of metals in small and hard to reach places such as weld joints, door shuts, wheel arches, etc. Fiber discs have a special quick connection system that simplifies and speeds up the process of attaching/detaching them to the backing pad.

Art.	Size	Grit	Package
555536	Ø 50 mm	P36	25/200 pcs.
555550		P50	
555560		P60	
555580		P80	



Perfect in combination with Air angle die grinder (art. 420510 and 420515).

SOFTMATT SERIES

UNLIKE USUAL PLANE ABRASIVE MATERIALS, SOFTMATT AND SOFTMATT LITE ARE 3-DIMENTIONAL AND REPRESENT A NONWOVEN POROUS BASE IMPREGNATED WITH AN ABRASIVE SUBSTANCE. APPLICATION OF BASES WITH DIFFERENT HARDNESSES TOGETHER WITH DIFFERENT TYPES OF MINERALS AND GRITS ALLOWS TO CREATE A WIDE RANGE OF PRODUCTS FOR VARIOUS APPLICATIONS.



SOFTMATT NONWOVEN ABRASIVES IN SHEETS AND DISCS

Nonwoven nylon material with abrasive impregnation in sheets, discs and rolls. It is manufactured in two color versions: violet and grey.

Function: material is intended for matting the surface, including difficult areas prior to applying any types of coatings. Ideal to use with RADEX Matt&Flatt Matting compound.

Features:

- Durability and profitability
- Application of a high-quality abrasive material with super sharp cutting grains provides high efficiency
- The unique even structure of a fiber provides ideally matt surface without gloss
- Application of the newest technology in spreading abrasives allows to impregnate the material completely for all its thickness, tremendously increasing working time
- Ideal surface preparation prior to applying coatings is reached with the use of «Grey» version of the material



	Art.	Size	Color	Grit	Package
sheets	330000	150 x 230 mm	violet	very fine	10/160 pcs.
	330001		grey	ultra fine	
discs	330006	Ø 150 mm	violet	very fine	10/250 pcs.
	330007		grey	ultra fine	
rolls	330003	115 mm x 10 m	violet	very fine	1 pc.
	330004		grey	ultra fine	

SOFTMATT PLUS ABRASIVE NONWOVEN MATERIAL IN SHEETS

Upgraded nonwoven nylon material with abrasive impregnation in sheets. It is manufactured in two color versions: grey and red.

Function: material is intended for matting the surface, including difficult areas prior to applying any types of coatings. Ideal to use with RADEX Matt&Flatt Matting compound.



	Art.	Size	Color	Package
	330010	115 x 230 mm	red	25/100 pcs.
	330011		grey	



MATT&FLATT MATTING COMPOUND

Matting compound of grey color supplied in a special bottle with dispenser.

Function: matting compound is a composition of liquid chemicals and abrasive intended for surface preparation prior to blending and new panel overpainting. It is suitable for any type of paint including water based.

Features:

- Fits all types of paints
- Produces even matt surface
- Easy to apply
- Easy to remove with no trace

Art.	Weight	Package
170500	1 kg	1/6 pcs.
170501	0.5 kg	1/12 pcs.

RECOMMENDATIONS:



Shake well
before use



Clean and degrease
surface



Apply manually with
Radex Softmatt



Add some water
on the surface for
better matting



DRY CONTROL POWDER

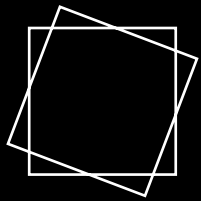
Defect detection dry coat is a fine black color powder in dispenser with applicator.

It is used in the motor industry to mark areas on car bodies that need to be worked on.

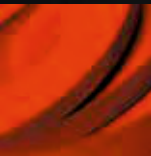
Art.	Weight	Package
549100	100 g	1 pc.



SURFACE CLEANING



Cleaning the surface is a very important process in automotive repair. The final result depends on how the surface is prepared and cleaned. RADEX offers a wide range of different types of cloths which perfectly remove dirt, dust and other contaminants, lint free.





DUST REMOVING ADHESIVE NAPKINS

Due to high quality materials and unique modern technology in production, these napkins perfectly gather and keep small particles, leave no traces of impregnation on the surface, lint free.



DUST RAG DUST REMOVING ADHESIVE NAPKINS ON GAUZE BASE

Impregnated adhesive antistatic napkins made of unbleached cotton gauze.

Art.	Size	Material	Density	Package
160301	75 x 55 cm	100% cotton	16 g/m ²	1/250 pcs.



WAVY DUST RAG DUST REMOVING ADHESIVE NAPKINS

Impregnated adhesive antistatic napkins made of unbleached cotton gauze. Ideal for large surfaces.

Function: napkins are used for removing dust, perfectly gather and keep small particles, leave no traces of impregnation on the surface, lint free. Also ideal to quickly remove dust from furniture or other wood, plastic and metal surfaces.

Art.	Size	Material	Density	Package
160303	80 x 90 cm	100% cotton	20 g/m ²	1/100 pcs.



DUST FLAT 3D DUST REMOVING ADHESIVE NAPKINS FROM 3D SYNTHETIC FELT

Impregnated adhesive antistatic napkins made of synthetic felt.

Art.	Size	Material	Density	Package
160302	20 x 20 cm	100% polyester	80 g/m ²	10/250 pcs.

DEGREASING NAPKINS

Degreasing napkins are intended for optimal preparation of all surfaces, removing various organic and non-organic contaminants, and for cleaning surfaces with solvents and detergents.



ABSORBENT WIPE COST-EFFECTIVE DEGREASING NAPKINS

Degreasing polypropylene napkins in perforated roll with perfect absorbing properties. They are solvent resistant. Lint free. Cost-effective. Have good rate and speed of moisture absorption. Produced using "Melt Blown" technology.

Art.	Size	Material	Density	Package
160102	32x38 cm	100% polypropylene	60 g/m ²	250 pcs. in roll



CLEANING CLOTH ROLL

High quality 3-layer cleaning cloth for degreasing and cleaning body panels. 100% cellulose.

Function: RADEX Cleaning cloth is tear resistant, lint free and highly absorbent. Fits RADEX floor and wall paper dispensers.

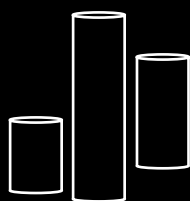
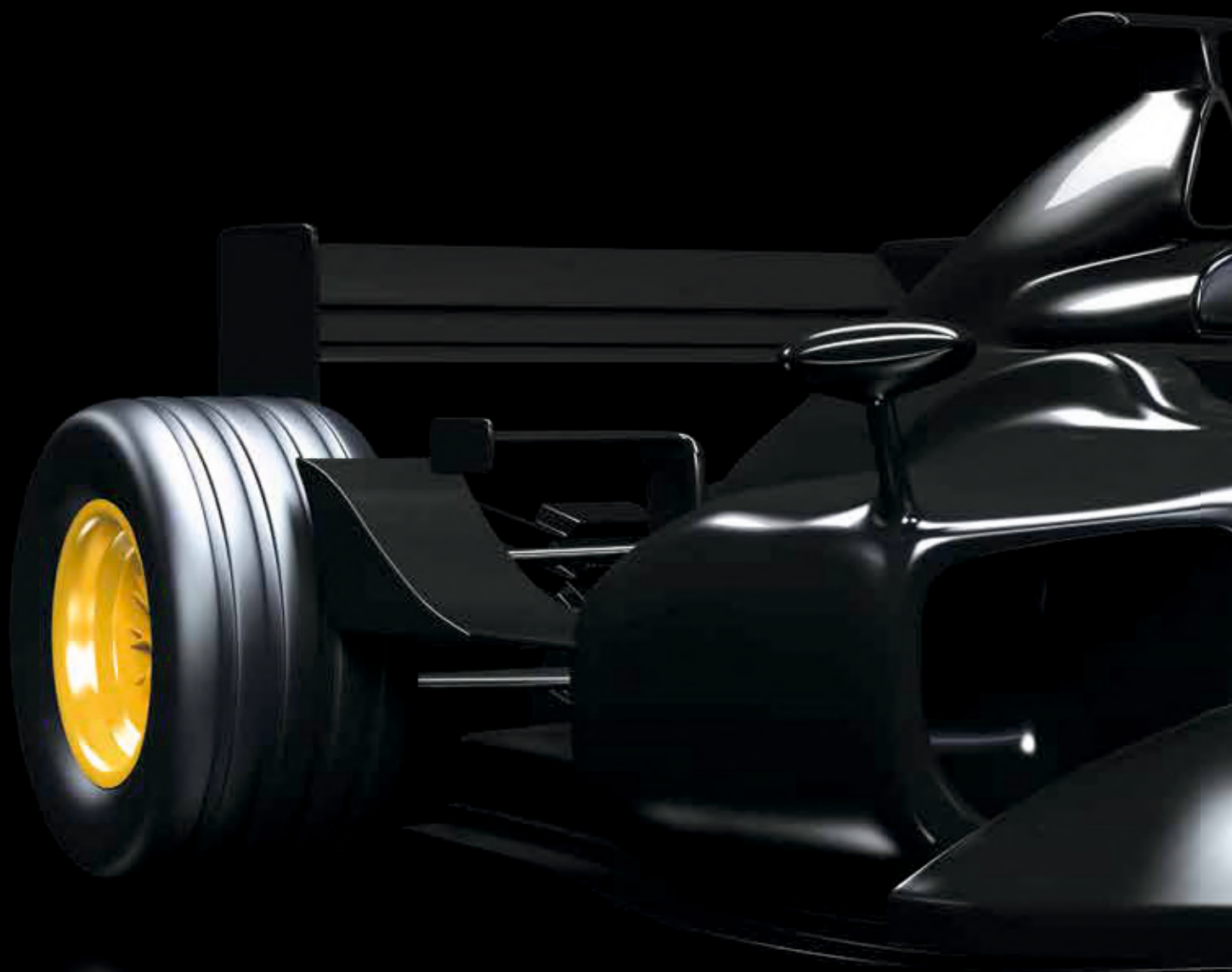
Art.	Size	Package
160103	37x37 cm	1000 pcs. in roll



MULTI SPONGE

To be used exclusively with water and universal cleaning products, is suitable for cleaning all dirty surfaces. Multi-sponges are slightly abrasive which improves cleaning power.

Art.	Size	Package
681100	130x80x30 mm	1 pc.



MASKING



The range of masking materials is presented with tapes, foam tapes, masking film, etc. Their basic application is to protect the surface from paint materials. In the range of RADEX masking materials the main are masking tapes on paper, vinyl and polyurethane foam basis.

These types of tapes are widely used in professional body shops. Wide application of masking tapes is caused by specific features of their adhesive layer. The glue has low adhesion and leaves no traces on the surface after removal.



TRIM MASKING TMA TAPE

Special masking tape in roll for rubber parts around windows. It consists of masking tape and durable clear plastic strip. Trim masking TMA Tape is resistant to solvents and moisture. Temperature resistance up to 120°C. Trim masking TMA Tape is suitable for practically all types of cars. It is perforated and easy to tear.

Function: special masking tape is intended for masking rubber parts around windows. It allows masking simultaneously rubber gaskets around windows and lifting it for overpainting beneath the strip.

Art.	Size	Package
130010	10 mm x 10 m	1/10 pcs.
130015	15 mm x 10 m	
130019	19 mm x 10 m	



MASKING FOAM TAPE

Masking foam tape made of white polyurethane foam with heat resistant glue strip applied on one side. Masking foam tape is supplied in a pre-cut roll which is placed in a special dispenser box for convenience in use and storage.

Function: flexible foam tape is intended for masking joints between panels prior to overpainting. Allows to hide any traces of repair, as they do not leave sharp edges. Using the masking foam tape speeds up the masking process before painting. It is a barrier for dust or spatter penetrating inside the car. Masking foam tape doesn't leave traces of glue after removal.

	Art.	Size	Package
FT	670013	13 mm X 55 m	1 pc.
	670017	17mm x 40 m	
T-FOAM	670110	11 mm x 25 m	1 pc.



RECOMMENDATIONS:

- Apply to clean and degreased surface. Do not prolong!
- Pull one foam strip from the roll.
- Press the foam strip to a surface.
- Avoid the foam adhesive contact with paint.
- Apply in doorway no closer than 3-5 mm from the edge.
- After drying remove the foam tape from the surface.
- Possible to use with infrared heaters at a temperature no higher than 80°C.



FINE LINE TAPE

Fine Line Tape in rolls is very thin self adhesive blue vinyl tape with good solvent resistance, high conformability and a smooth, sharp mask-off edge. The blended rubber based adhesive system offers high temperature resistance through bake cycles up to 155°C for 45 minutes. Fine Line Tape is durable, easy to apply and to remove after use. It doesn't leave any residue. Service temperature range is from 0°C to 155°C.

Function: Fine Line Tape is intended for design and multicolor overpainting as well as for critical applications such as extremely irregular shapes, over rivets and welds. Also suitable for masking protective rubber strips.

Art.	Size	Package
120103	3 mm x 33 m	1/10 pcs.
120106	6 mm x 33 m	
120109	9 mm x 33 m	
120112	12 mm x 33 m	



FINE LINE STRIPING

Fine Line Striping Tape in rolls is very thin self adhesive vinyl tape for multicolor overpainting and applying parallel stripes on the surface. The blended rubber-based adhesive system offers solvent, moisture and high temperature resistance through bake cycles up to 155°C for 45 minutes. Fine Line Striping Tape is durable, easy to apply and to remove after use. It doesn't leave any residue. Service temperature range is from 0°C to 155°C.

Function: Fine Line Striping Tape is perforated into 8 stripes with 1.5 mm width and intended for multicolor overpainting and reproducing decorative strips of almost any profile by removing the necessary number of stripes.

Art.	Size	Package
120000	25 mm x 10 m	1/36 pcs.

PROFI MASK MASKING PAPER

Masking Paper made of 100% pure unbleached long-fibre Kraft pulp.

Function: RADEX PROFI MASK-Masking paper is designed for masking parts of the car body which are not to be overpainted. It has a special treatment on one side which makes this paper a paint absorbent paper and prevents water-based paints from going through it. Easy to cut and easy to apply on difficult areas. FOR PROFESSIONAL USE ONLY!

Art.	Size	Package
671000	0.2 x 400 m	1 roll
671001	0.4 x 400 m	
671002	0.6 x 400 m	
671003	0.9 x 400 m	
671004	1.2 x 400 m	



MASKING TAPES

Tapes are intended for masking cars during preparation and painting procedures under average and high temperatures. Doesn't leave any residue after removal from the surface.

MASKING TAPE 60 °C

Crepe paper based masking tape in roll of white color. It is resistant to solvents and temperature up to 60°C.

Function: tape is intended for masking cars during preparation and painting procedures under average temperatures. It doesn't leave any residue after removal from the surface.

Art.	Size	Package
371001	19 mm x 50 m	96 pcs.
371002	25 mm x 50 m	72 pcs.
371003	38 mm x 50 m	48 pcs.
371004	50 mm x 50 m	36 pcs.
371075	75 mm x 50 m	16 pcs.

MASKING TAPE 100 °C

Crepe paper based masking tape in roll of brown color. It is resistant to solvents, water and temperature up to 100°C.

Function: tape is intended for masking cars during preparation and painting procedures under average and high temperatures. It can be used **water**-based paints and infrared heaters. Masking tape ideally sticks to the surface and doesn't leave any residue after removal.

Art.	Size	Package
340341	19 mm x 40 m	96 pcs.
340342	25 mm x 40 m	72 pcs.
340343	38 mm x 40 m	48 pcs.
340344	50 mm x 40 m	36 pcs.

PROFI MASKING TAPE 80 °C

High quality and a high performance RADEX PROFI masking tapes can be used not only in the professional automotive sphere but also by equipment manufacturers. Thermo resistance is up to 80°C degrees. Crepe paper in yellow color is resistant to solvent or water-based paints and any infrared heaters. Masking tape ideally sticks to the surface and doesn't leave any residue after removal.

Function: tape is intended for masking cars during preparation and painting procedures under average and high temperatures.

Art.	Size	Package
350151	18 mm x 50 m	48 pcs.
350152	24 mm x 50 m	36 pcs.
350153	36 mm x 50 m	24 pcs.
350154	48 mm x 50 m	



PROFI MASKING TAPE 120 °C

Superior quality and high performance RADEX PROFI masking tapes can be used not only in the professional automotive sphere but also by equipment manufacturers. Thermo resistance is up to 120°C degrees. Crepe paper in white color is resistant to waterborne paints and any infrared heaters. Masking tape ideally sticks to the surface and doesn't leave any residue after removal.

Function: tape is intended for masking cars during preparation and painting procedures under average and high temperatures.

Art.	Size	Package
350351	18 mm x 50 m	48 pcs.
350352	24 mm x 50 m	36 pcs.
350353	36 mm x 50 m	24 pcs.
350354	48 mm x 50 m	



WASHI MASKING TAPE

RADEX Washi rice paper tape (also known as Japanese Flat Paper) is generally used for paint masking applications. This Washi paper tape does not break when peeling, but can be easily cut or torn by hand. Tape will not give adhesive residue and not change color up to 150°C for 30 minutes.

Function: recommended for car repair paint masking and to make a critical edge and mask a corner part. RADEX Washi masking tape does not leave a residue. The back side of this tape will not repel paint. This Washi tape is designed to give an excellent paint break line.

Art.	Size	Package
380019	19 mm x 50 m	48 pcs.
380025	25 mm x 50 m	36 pcs.



SILVER DUCT TAPE

RADEX Silver duct tape is polyethylene coated cloth backing with rubber adhesive. Duct tape with very high adhesion and excellent high or low-temperature resistance. Does not leave behind glue after removal.

Function: recommended for protecting the bodywork against sanding through paint on the rear area. Ideal for holding bumpers or other spare parts after car is in an accident and vehicle transporting.

Art.	Size	Package
381050	50 mm x 50 m	18 pcs.



ORANGE MASKING TAPE

Very flexible masking tape ORANGE is intended for masking cars during preparation and painting procedures under average and high temperatures. It can be used with water-based paints and infrared heaters. Masking tape ideally sticks to the surface and doesn't leave any residue after removal.

Art.	Size	Package
370001	19 mm x 50 m	64 pcs.
370002	25 mm x 50 m	48 pcs.
370003	38 mm x 50 m	32 pcs.
370004	50 mm x 50 m	24 pcs.

PROTECTING TAPES



PAINT PROTECTOR FILM PU

OEM quality transparent protective film against chippings and scratches. Also suitable for car and bus windows. Does not yellow, prolonged resistance to UV. Resistant to high pressure cleaning.

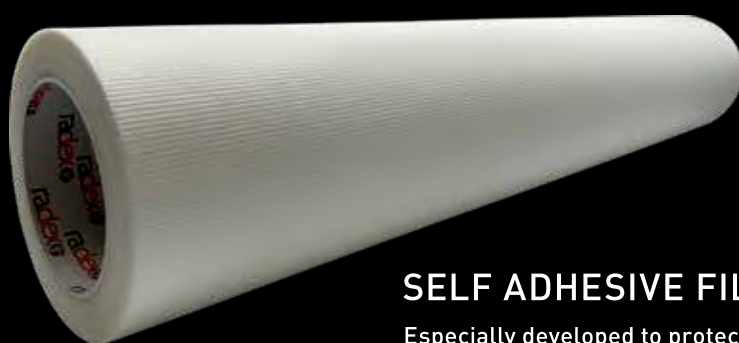
Art.	Size	Package
121230	150mm x 2m	1/12 pcs.



STRUCTURE FILM

OEM quality black protective film against chippings and scratches. Also suitable for car and bus windows. Does not yellow, prolonged resistance to UV. Resistant to high pressure cleaning.

Art.	Size	Package
121240	150mm x 2m	1/12 pcs.



SELF ADHESIVE FILM WITH ANTI-SLIP SURFACE

Especially developed to protect the floor from paint in mixing rooms, spray booths and working table surfaces. Color- white.

Art.	Size	Package
122100	600mm x 20m	1 pc.

MASKING FILM

The film is supplied in a roll folded in several layers. The roll height in the folded position is 1 m. Paint Absorbent Masking Film is used for masking areas which are not to be overpainted. Special surface treatments ensure excellent adhesion of paint to the film around the repair area and eliminate the need for additional paper masking, as well as the risk of paint 'flaking' on removal.

Masking



PAINT ABSORBENT MASKING FILM MF-4200

High-density transparent polyethylene film with electrostatic coating. It is resistant to a temperature up to 80°C.

RADEX logo with the sign "This side up" is printed along the centre of the film to provide an accurate positioning guide.

Art.	Size	Thickness	Package
660010	4 x 200 m		
660013	5.5 x 150 m	10 µm	1 roll
660016	6 x 100 m		
660012	4 x 5 m	7 µm	1 sheet



PURPLE MASKING FILM

A premium high density static masking film in purple color that resists moisture imprinting or ghosting on painted vehicle surfaces. High thickness allows for ease of handling and increases cling to vehicle; treated to resist primer, base and clear coat flaking.

Function: holds paint on the exterior of the film, also has a special layer on the inner side of the film to absorb humidity on the car. This way you avoid white spots after spraying. RADEX logo with the sign "This side up" is printed along the centre of the film to provide an accurate positioning guide.

Art.	Size	Thickness	Package
660011	4 x 150 m	13 µm	1 roll



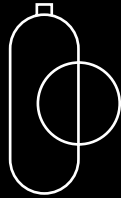
MASKING FILM CUTTER

The internal arrangement of the knife blade eliminates the chance of damage to the repaired surface. The blade is made of stainless steel.

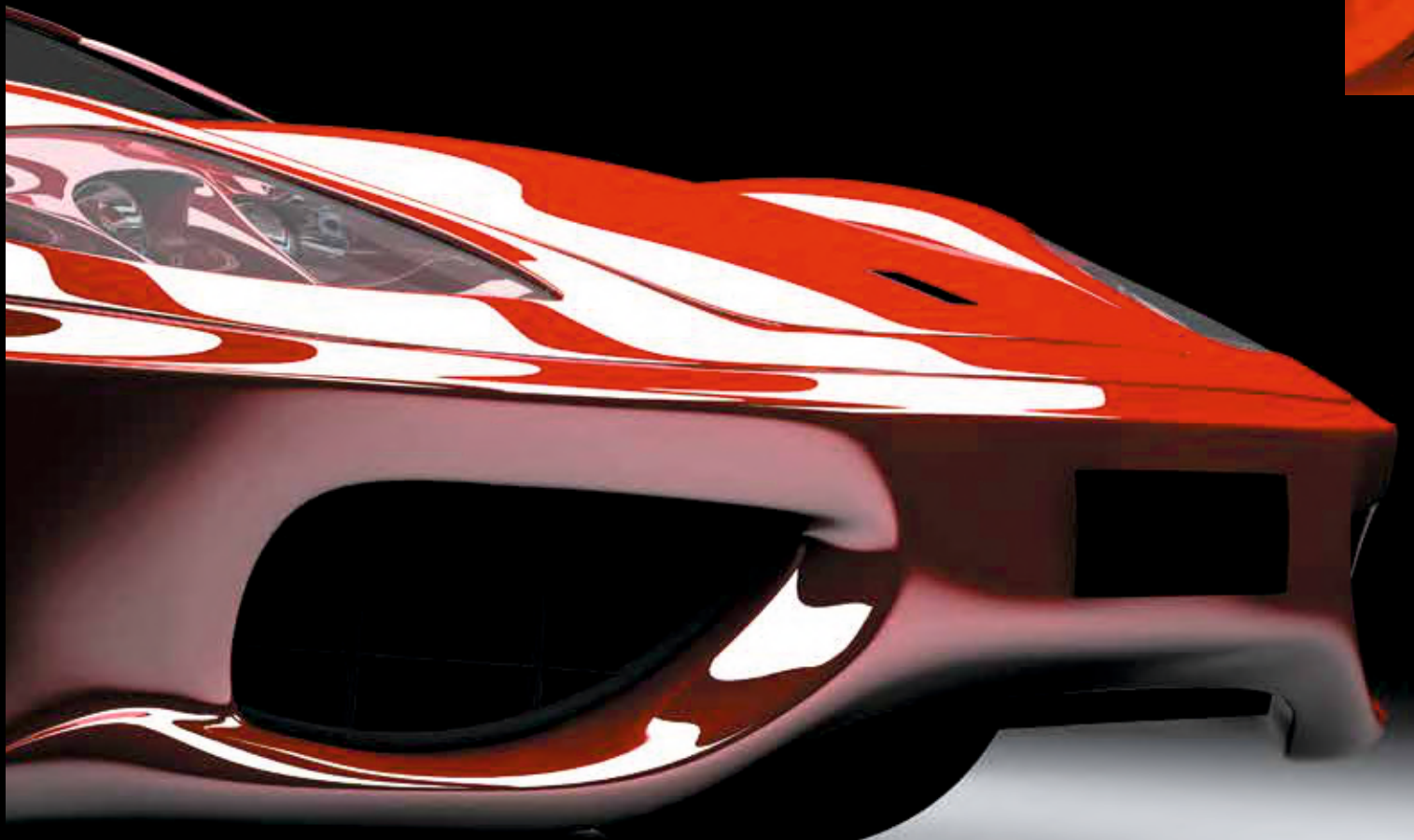
Art.	Package
660014	1/72 pcs.

POLISHING





One of the basic commodity groups in the RADEX range is the polishing system which is represented by polishing compounds, polishing pads, polishing cloths, abrasives, etc. Use of the RADEX polishing system effectively eliminates paint defects and defects obtained during car operation, protecting its paint for a long time with maximum gloss. The complex approach, high quality materials and simple choice of the necessary products are the main distinctive features of the RADEX polishing system. Application of the RADEX polishing system provides achieving the maximum result with the minimum effort.





ABRASIVES



RADEX GOLD MICROFINISHING ABRASIVE FILM DISCS WITH VELCRO, 15 HOLES

Microfinishing abrasive discs on plastic film base with holes for dust extraction and aluminum oxide mineral combining extremely high abrasive ability and high wear resistance.

Function: microfinishing abrasive film discs with holes are specially designed for quick defects and dust nibs removal from the painted surface. Recommended to use with universal soft interface pad and sanding equipment with dust extraction system for better finish.

Art.	Size	Grit	Package
553617	Ø 150 mm	P1000	50/400 pcs.
553618		P1200	
553619		P1500	
553620		P2000	

Perfect in combination with Random orbital sander (art. 420025)



MINI MICROFINISHING DISCS WITH VELCRO

RADEX Mini abrasive discs can be used for both machine and hand sanding operations and are primarily designed for spot repair. RADEX Mini abrasive discs are excellent finishing material for the correction of small painting defects and the removal of dust particles in top coats and clearcoats.

Art.	Size	Grit	Package
553701	Ø 35 mm	P1500	100 pcs.
553702		P2500	
553703		P3000	





WPF WATERPROOF ABRASIVE SHEETS

Waterproof abrasives sheets are made of latex paper with silicon carbide and aluminum oxide minerals, combining extremely high abrasive capability and wear resistance.

Function: waterproof abrasive sheets are intended for defects and dust nibs removal from the painted surface and can be used in such areas as OEM, Automotive Aftermarket, Wooden and Metal industries, etc.

Art.	Size	Grit	Package
310117	230 x 280 mm	P1500	50/1000 pcs.
310118	230 x 280 mm	P2000	

Polishing

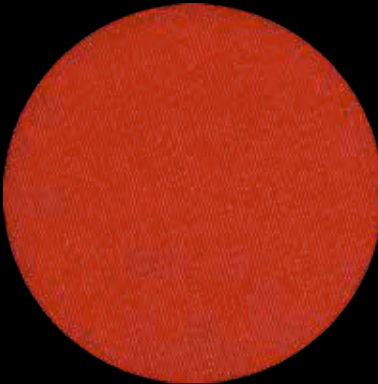
FOAM ABRASIVE DISC

- Backing: cloth + Sponge + Velcro
- Mineral: aluminum oxide
- Coating: open coating

Use:
DISC, Manual sanding (WET or DRY).

Advantage:

- Long lasting
- Excellent and consistent finishing
- Outstanding grip
- Works well on corner surface and edge
- Washable



Art.	Size	Grit	Package
554001	Ø 150 mm	P 600	10 pcs.
554002		P 800	
554003		P 1000	
554004		P 1500	
554005		P 2000	
554006		P 2500	
554007		P 3000	





POLISHING COMPOUNDS



ONE STEP

Now you can make your polishing process more efficient and faster than before! RADEX one step polishing compound is specially designed for paint finishing work on scratch resistant surfaces including UV cured paints:

- Fast removal of blemishes
- Repairs top coats
- Deep scratch removal
- Time & product economy

Art.	Volume	Package
170405	1 L	1/6 pcs.

Recommended to use with RADEX lambs wool polishing pad, art. 181500 (see "Polishing pads" section)



RDX-10

A new generation abrasive compound on aluminum oxide base combining high abrasive effectiveness and quality finish with minimum force and time. Designed to eliminate scratches from abrasive paper P1500-P2000 or finer.

Due to the unique formulation the abrasive compound doesn't get dry and residues can be easily cleaned up after polishing. It doesn't spill. Perfectly matches all types of paints and clearcoats both fresh and aged. It doesn't contain silicones.

Instruction for use:

1. Shake well before use. Apply on clean and properly cured surface. Avoid using on hot surfaces and in direct sunlight.
2. Ideally applied using RADEX RDE 01 white polishing pad on electric or pneumatic polishing machine at 1500 – 2000 RPM.
3. Work a small area at a time with medium pressure. Reapply compound when moving to a new area. This will reduce consumption and increase effectiveness.
4. For the best result complete the process by polishing with RADEX RDX-23 polishing compound using RADEX RDE 02 yellow polishing pad.
5. Wipe the surface with RADEX Microfiber/Ultrafiber polishing cloths.

Art.	Size	Package
170410	1 L	1/6 pcs.



RDX-23

RADEX RDX-23 fine abrasive compound on aluminum oxide base is especially designed for removal of small scratches and sanding marks with grid P2000-P3000 and producing a long lasting mirror finish in one step. It can be used after RADEX RDX-10 Abrasive compound as a standard operation.

It is especially effective on dark color surfaces to remove haze, circular scratches and «holograms». The compound doesn't get dry and residue is easily cleaned up after polishing. It doesn't spill. Perfectly matches all types of paints and clear coats. It doesn't contain silicones. For professional use only!

Instruction for use:

1. Shake well before use. Apply on clean and properly cured surface. Avoid using on hot surfaces and in direct sunlight.
2. Ideally applied using RADEX RDE 02 yellow polishing pad on electric or pneumatic polishing machine at 2000-2500 RPM. No water needed.
3. Work a small area at a time with medium pressure. Reapply compound when moving to a new area. This will reduce consumption and increase effectiveness.
4. Once the defects have been removed, reduce pressure and continue polishing to a high gloss.
5. Wipe the surface with RADEX Microfiber/Ultrafiber polishing cloths.

Art.	Volume	Package
170423	1 L	1/6 pcs.



PROTECTIVE GLAZE GLOSS PROTECTIVE POLISH

RADEX PG is a gloss protective polish with natural carnauba wax which in combination with polymeric promoters creates a heavy-duty film on a car surface adding high gloss and long term protection against the environment. Perfectly matches all types of paints and clearcoats.

Instruction for use:

1. Shake well before use. Apply on clean and properly cured surface. Avoid using on hot surfaces and in direct sunlight.
2. Ideally applied using RADEX RDE 03 black polishing pad on electric or pneumatic polishing machine at 2500-3500 RPM. Can be used manually with RADEX Polishing Cloth. No water needed.
3. Wait 1-3 minutes until the polish gets slightly dry and wipe away residue using RADEX Microfiber/Ultrafiber polishing cloths.

Art.	Volume	Package
170404	1 L	1/6 pcs.



ANTIHOLOGRAM COMPOUND

RADEX antihologram compound is a very fine paste which removes swirl marks, blooms and holograms, especially on dark paintworks.

The extremely fine nano-particles guarantee an outstanding final finish with an unmatched deep gloss.

The cut intensity can be regulated by using different polishing pads and polishing speeds.

Art.	Volume	Package
170406	1 L	1/6 pcs.



EXTREME CUT

The High Performance Cutting Compound Extreme Cut has been designed specifically for paint finishing work on scratch resistant surfaces, including UV cured paints. The outstanding cut, the brilliant mirror- like gloss and easy handling of product will convince you. Start using the polishing machine at 600RPM and finish off at 1200 RPM. Easy to be wiped off afterwards with a microfibre cloth. Suitable for all kind of paints: conventional 1K, 2K paint, all clear coats, including ceramic clean coats. Silicone free.

Art.	Volume	Package
170451	1 kg	1/6 pcs.

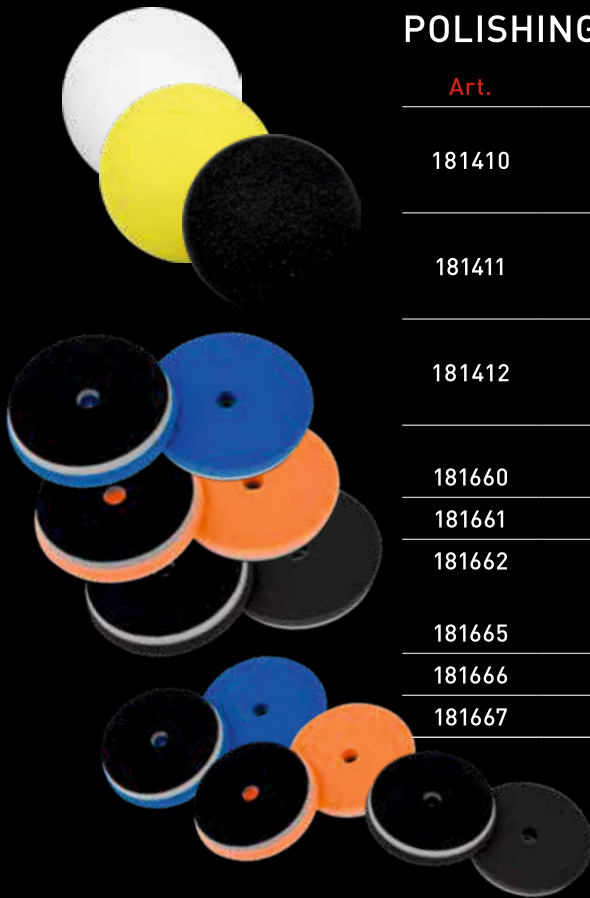


CRYSTAL CLEAN

RADEX Crystal Clean guarantees fast and easy cleaning of the clear coat. It is perfect for controlling the surface after polishing, to check and ensure that all sanding marks have been totally removed. Suitable for all paints, including hard and scratch resistant clear coats. Works on fresh or cured automotive paint surfaces. Silicone free. No filler.

Art.	Volume	Package
170407	500 ml	1/6 pcs.

POLISHING PADS



POLISHING PADS

Art.	Name	Size	Package
181410	RDE 01 White plain polishing pad for abrasive compound	Ø 150 mm, 25 mm thickness	2 pcs.
181411	RDE 02 Yellow plain polishing pad for Fine abrasive compound		
181412	RDE 03 Black plain polishing pad for non-abrasive compound		
181660	Blue	Ø 165mm, 25mm thickness	1/10 pcs.
181661	Orange		
181662	Black		
181665	Cutting	Ø 140mm, 25mm thickness	1/10 pcs.
181666	Polishing		
181667	Finishing		

Polishing



CCS TYPE POLISHING PADS

RADEX CCS type precision rotary pads are designed exclusively for use on Rotary Machines. The Precision Rotary line introduces an updated profile to maximize performance, durability, flexibility, and accuracy during polishing. Unlike conventional foam pads that tend to absorb polish too quickly, diminishing polish and pad performance, CCS-type pads address this common issue through strategic patterns of partially closed foam cells.

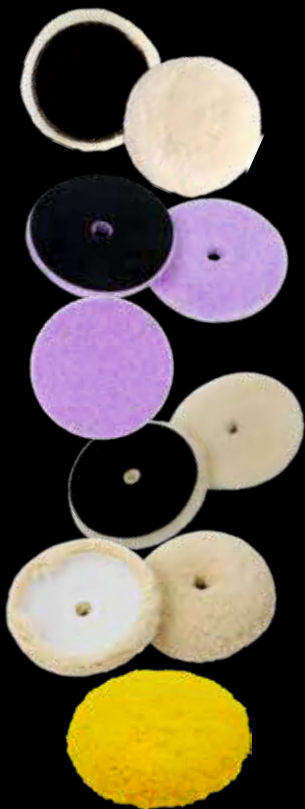
Art.		Colour	Size	Package
181611	cutting	yellow	Ø 165 mm	1 pc.
181612	polishing	orange		
181613	finishing	black		



RDE MINI POLISHING PAD

Waffled structure for more efficient polishing result. For polishing abrasive compounds (such as RDX-10, RDX-23). RDE MINI pad is ideal for polishing difficult to access surfaces on car body.

Art.	Size	Package
181409	80 x 30 mm	1/100 pcs.



LAMBS WOOL POLISHING PAD

RADEX lambs wool polishing pads offer the ultimate quality and performance. This top quality lambs wool cuts quicker than a foam pad, and lasts longer. The heat absorbing characteristics of wool fibres greatly reduces the amount of heat generated during machine polishing, allowing defects to be eliminated quicker.

Function: velcro hook-it backing pad, the lambs wool can be washed and reused. Recommended for using with RADEX one step polishing compound.

Art.		Size	Package
181500	Medium	Ø 150 mm	1/10 pcs.
181502	Soft	Ø 150 mm	
181501		Ø 80 mm	1/5 pcs.
181600	Purple hybrid	Ø 165mm	1/10pcs.
181659	Purple hybrid	Ø 152mm	1/10pcs.
181601	Premium	Ø 165mm	1/10pcs.
181602	Twisted	Ø 165mm	1/10pcs.
181688	Double side	Ø 203mm	1/40pcs.



In combination with Small shaft grinding M14 Female 5/8"-1"
Art. 500560 Package 1pc.



MICROFIBER POLISHING PADS

RADEX microfiber polishing pads are made using specific blends of microfiber and special bonding materials, ensuring durability and long-lasting performance that is hard to compete with. They provide outstanding finishing capability, resulting in a luster free of haze. Quality foams provide greater durability, with density optimized for each pad's intended purpose.

Function: hook-it backing pads, with the cutting power and finesse to tackle any task, using a dual action polisher.

Art.		Size	Package
181656	cutting	Ø 82 mm	1/10 pcs.
181657		Ø 133 mm	
181658		Ø 159 mm	



ECO POLISHING PADS FOR M14 THREAD

RADEX ECO 150 mm polishing pads fits a range of RADEX polishing accessories to achieve an ideal polished finish. Made from high quality foam which has a high durability to provide a long life span.

Function: Can be used with any rotary polishers. Ideal for use with most brands on the market as the majority of threaded polishers use a (M14) 14mm thread.

Art.		Color	Size	Package
181301	hard	white	Ø 150 mm	1/10 pcs.
181302	medium	orange		
181303	soft	black		

POLISHING CLOTHS



DISPOSABLE POLISHING CLOTH

Nonwoven disposable polishing cloth of white color with porous structure made of polyester and rayon. It is supplied in the perforated roll which is placed in special dispenser box for convenience in using and storing.

Function: nonwoven disposable polishing cloth is intended for removal of polishing compound residue. It is flexible, lint free, gathers and keeps particles very well, antistatic and doesn't damage the surface.

Art.	Size	Package
160401	32 x 40 cm	250 pcs. in roll

Polishing

MICROFIBER POLISHING CLOTHES

Soft woven reusable microfiber polishing cloths in green/blue/yellow colors, made of a polyester and polyamide mixture. Different colors allows to easy organize the working environment. These cloths are silicone-free, making them suitable for professional car repair. They boast remarkable absorption and efficient cleaning ability. Durable to chemicals, long-lasting, and can be washed at temperatures up to 95°C.

Function: These super-soft woven reusable microfiber polishing cloths are designed for removing polishing compound residue from painted surfaces. They are also suitable for cleaning windows, decorative wooden parts, and leather. Flexible, lint-free, they gather and retain particles effectively without causing damage to the surface.

Art.	Color	Size	Package
160410	blue	40 x 40 cm	5 pcs.
160411	green		
160414	yellow		





SUPERFIBER

This professional cloth meets the highest requirements in paintwork care, delivering exceptional results even on large and sensitive surfaces. Leaves no residues, no wipes in scratches. Extremely soft and absorbent. Recommended for final cleaning with RADEX Crystal Clean (art.170407).

Art.	Size	Package
160412	50 x 60 cm	1 pc.



PREMIUM

Premium blue edgless cloth. The finest, edgless professional quality microfiber detailing cloth that is extremely soft and perfect for safe cleaning and dirt removal. These microfiber towels can tackle any car cleaning task and work equally well on interior, exterior, wheels, trim and paint.

Art.	Size	Package
160413	40 x 40 cm	1/10 pcs.



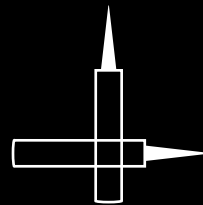
NATURAL

100% genuine natural chamois leather: soft, high extensibility, hygroscopicity, permeability, unique design, absorbs large amounts of water. Leaves surface lint and streak free. Easy to wring out and store.

Art.	Size	Package
681101	61 x 40 cm	5 pcs.

SEALANTS AND ADHESIVES

High quality adhesives and sealants in our product range.
Now glued and sealed seams and parts looks like OEM made.





POLYURETHANE SEALANT RADEX 701

RADEX 701 polyurethane sealant is a one-component, very fast curing, and elastic polyurethane adhesive/sealant designed for car body sealing which cures on exposure to atmospheric moisture. Specifically developed to meet the car industry requirements, it is characterised by an initial controlled viscosity that makes the product easy to brush and to smooth, particularly in those applications where a thin layer or bead of adhesive is required. Once cured, the products reach high levels of hardness that gives a first equipment appearance to the material.

Usage: before application, refer to the instructions contained in the Technical and Safety Material Data Sheet.

Art.	Volume	Color	Package
220701	310 ml	white	1/12 pcs.
220702		grey	
220703		black	

Perfect in combination with RADEX HCG or PG guns for sealant. (see "Equipment" section)



GLAZING ADHESIVE RADEX 801

RADEX 801 Glazing adhesive is a one-component, ultra fast-curing (short Drive Away Time), flexible and high modulus polyurethane adhesive for the bonding of vehicle glass-direct glazing. It is specifically designed to give a fast and safe drive-away time on vehicles fitted with airbags. It is ideal for direct glazing on vehicles where High Shear Modulus and Non Conductive properties are required. Solvent free, it is completely odourless.

Usage: the surfaces to be treated should be perfectly clean, dry and free from dust and grease. It is necessary to apply RADEX Cleaner/Activator and RADEX Primer on glass.

Art.	Volume	Package
220801	310 ml	1/12 pcs.

Perfect in combination with RADEX HCG or PG guns for sealant. (see „Equipment" section)



SPRAYABLE SEALANT RADEX 901

RADEX 901 Sprayable sealant is a low viscosity, Silyl-Terminated sealant which cures by moisture reaction to form an elastic coating. It is isocyanate, phthalates, PVC and silicone free. Specific for spray applications or by paintbrush for sealing seam and welded joints in the automotive industry and in the construction and repair of coaches and car-bodies, railway carriages, industrial vehicles and containers, it also contributes towards protection against corrosion. Excellent primerless adhesion properties to metals, painted surfaces, aluminium, PVC, glassfiber reinforced plastic, ABS, polycarbonate and plastic materials in general (excluding polyethylene, teflon).

Usage: before application, refer to the instructions contained in the Technical and Safety Material Data Sheet.

Art.	Color	Volume	Package
220901	grey	290 ml	1/12 pcs.
220902	black		
220903	beige		

Perfect in combination with RADEX PGS or PG guns for sealant application (See "Equipment" section).





2K EPOXY STRUCTURAL BONDING

Radex® 225 2K Epoxy is a unique epoxy created for bonding and repairing various materials. This product boasts zero shrinkage and is excellent for grinding. Applied with the RADEX HSG or HCG hand gun at a mixing ratio of 2:1, it can be cured using the IR heater at 60°C. RADEX 2k-Epoxy is a versatile system for repairing, bonding, and sealing metal, as well as other materials like stone, SMC, ABS, aluminum, galvanized steel, cold-rolled steel, and hot-rolled steel. Its advantages include being a lead-free alternative to tin soldering, requiring no open flame. It provides perfect sag resistance, rebuilds the original shape effectively, exhibits excellent curing speed, robust bond strength, and remains flexible even under cooler conditions with no shrinkage.

Art.	Volume	Package
220225	195ml	1/12 pcs.



2K POLYURETHANE STRUCTURAL ADHESIVE 30 SEC

Radex® 2K polyurethane structural adhesive 30 sec is a 2K product with very fast drying time for plastic repair. With mixing tips included in the set it is easy to mix both components without air bubbles and waste of the material. Product can be used on different kinds of plastics, wood, metal, glass fiber and ceramics.

Application: Clean and degrease surface. Working time 30 sec. Sanding time after 5 min. Structural adhesive is in 1:1 50 ml cartridge which is used with art. 410033 RADEX PRO hand gun.

Art.	Volume	Package
220000	50 ml	1/12 pcs.



2K PLASTIC STRUCTURAL ADHESIVE 1.5 MIN

Radex® 2K plastic structural adhesive 1.5 min is a 2K product with fast drying time for plastic repair. With mixing tips included in the set it is easy to mix both components without air bubbles and waste of the material. Product can be used on different kinds of plastics, wood, metal, glass fiber and ceramics.

Application: Clean and degrease surface. Working time 1.5 min. Sanding time after 10 min. Structural adhesive is in 1:1 50 ml cartridge which is used with art. 410033 RADEX PRO hand gun.

Art.	Volume	Package
220090	50 ml	1/12 pcs.



MIX TIP FOR 2K STRUCTURAL PLASTIC ADHESIVE

It's the shortest mix tip for 2 component adhesives in the world. 100% mixing of 2 component adhesives with minimum wasted material. Fits all 50ml cartridges with bayonet closure. Shorter than comparable mixers, for easier access to work.

Art.	Package
220005	1/12 pcs.



PLASTIC ADHESIVE PRIMER AERO

Primer is a compound for the preparation of plastic surfaces, made of resins dispersed in solvents. Product improves the adhesion of structural adhesives on thermoplastic materials such as PMMA, SAN, ABS, PP, PA, TPU, PVC, CA.

Application: Shake well before use. Spray a thin layer of primer directly on to the prepared parts, keeping the aerosol in a vertical position. The product favours a subsequent effective adhesion of paints, glue and inks. Apply in strictly necessary quantities to avoid dripping and waste of product. Wait for at least 5 min at 23 °C before applying the adhesive. To avoid problems of incompatibility, we recommend to use the complete product range of the RADEX system for the repair of plastic material.

Art.	Volume	Package
220111	200 ml	1/6 pcs.



PRIMER

RADEX Primer is a black Primer specifically designed for the ceramic band on vehicle glass. It ensures the complete protection of the adhesive by creating a barrier against harmful UV rays which can lead to the degradation of the adhesive. It is also an adhesion promoter. To be used in conjunction with RADEX Cleaner/Activator.

Art.	Volume	Package
220001	30 ml	25 pcs.



CLEANER/ACTIVATOR

RADEX Cleaner/Activator is a surface Cleaner/Activator to be used in direct glazing applications. It is used to clean windshields and, at the same time, to prepare them for the following step in which the RADEX Primer will be applied. Being silane based it is a non filming resin that also works as a preliminary adhesion promoter, enhancing the bonding properties of the adhesive.

Art.	Volume	Package
220002	30 ml	25 pcs.



FELT APPLICATOR

Applicator specifically designed for the application of Primer and Cleaner/Activator. The applicator can absorb and retain more of the primer, saving time and energy.

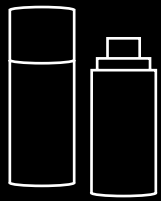
Art.	Package
080019	1/100 pcs.



WIRE

Art.	Section	Package
040625	twisted	1 pc.
040626	square	

PROTECTIVE COMPOUNDS



Full range of professional premium quality antichip and anticorrosion coatings made with the use of advanced technologies in the chemical industry.





OVERPAINTABLE ANTICHIP COATING 310 SP

Overpaintable antichip coating made of synthetic rubber and resins. It is being produced in black, grey and white colors. It has good mechanical strength, excellent rust preventive and sound absorbing properties. Cures fast forming structured protective coating that can be overpainted with all types of 1K and 2K paints.

Function: overpaintable antichip coating is intended for rust and stone chip protection of car bodies, railway wagons, etc. This coating was especially designed to restore textured OEM finishes under bodyshop conditions. Depending on the method of spraying it is easy to achieve different type of structured finish on the surface.

Art.	Volume	Color	Package
260011	1 L	black	1/12 pcs.
260012		grey	
260013		white	

Perfect in combination with antichip spray guns
RADEX 410010 and 410011 (see "Equipment" section).



UNDERBODY COATING 210 UBC

Non overpaintable coating made of bitumen. It is being produced in black color. It has good mechanical strength, excellent rust preventive and sound absorbing properties. Cures fast forming flexible structured protective coating without runs which is similar to OEM appearance.

Function: non overpaintable bitumen coating is intended for rust and stone chip protection of car underbody, body sills, wheel arches, wings, etc. Depending on the method of spraying it is easy to achieve different type of structured finish on the surface.

Art.	Volume	Color	Package
260021	1 L	black	1/12 pcs.

Perfect in combination with antichip spray guns
RADEX 410010 and 410011 (see "Equipment" section).



BRUSHABLE SEAM SEALER RADEXSEAL BS

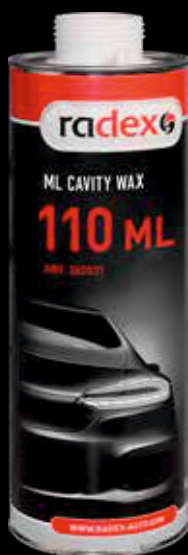
Overpaintable one component brushable seam sealer made of synthetic rubber. It is easy to apply. It cures fast forming flexible structured coating without runs which is similar to OEM appearance. Brushable seam sealer has good mechanical strength, excellent rust preventive and sound absorbing properties. It has perfect resistance to water, oil, gasoline, etc.

Function: brushable seam sealer is intended for applying on spot welded seams or on bolted joints for providing excellent leak and water resistance.

Art.	Weight	Color	Package
210027	1 kg	grey	1/12 pcs.

Perfect in combination with RADEX flat nylon brush
681114 (see "Accessories" section).





INNER CAVITY WAX 110 ML

Non overpaintable transparent flexible coating made of wax. It has excellent rust preventive properties. Due to high penetrating power inner cavity wax perfectly displaces water and can be applied even to wet surfaces. After curing the coating remains slightly sticky and flexible without a specific smell.

Function: inner cavity wax is intended for rust protection of hidden spaces of car body.

Art.	Volume	Color	Package
260031	1 L	transparent/white	1/12 pcs.

Perfect in combination with universal antichip spray gun
RADEX 410012 (see "Equipment" section).



RECOMMENDATIONS:



Shake well
before use



Clean
surface



Air
pressure



Distance to
the surface



Interlayer
drying



Drying time



Keep away
from water



Safety
measures

310 SP	for 3 minutes minimum	+	3-6 bar	25-30 cm	10-20 min; 1-2 layers	60-90 min/ 60 °C 3 h/20 °C	+	Use protective equipment
210 UBC	for 3 minutes minimum	+	3-6 bar	25-30 cm	15-30 min; 1-2 layers	4-6 h/20 °C	+	
110 ML	for 3 minutes minimum	+	3-6 bar	25-30 cm	1-2 layers; Curing time between layers 90-120 min	4-6 h/20 °C	+	



Mix thoroughly
before use



Clean
surface



Apply



Drying
time



Keep away
from water



Use protective
equipment

RADEXSEAL BS	for 3 minutes minimum	+	with brush	24-48 h/20 °C	+	+
--------------	--------------------------	---	------------	---------------	---	---

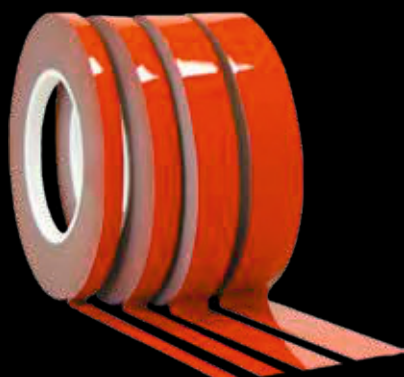


GLUING TAPES



In many cases double-sided tapes are ideally suited for bonding different surfaces. They have no alternative for today due to convenience and usability. Bonding by double-sided tapes happens immediately and strongly, thus no special equipment required and many time-consuming operations like drilling the holes, placing the mountings, etc. are excluded. Surfaces remain intact and the joint line between the connected parts is almost invisible. RADEX double-sided tapes consist of two adhesive layers, foam carrier and protective liner. The foam carrier provides the tape with the ability to take the shape

of almost any surface. There are many other advantages of RADEX double-sided adhesive tapes. Joints that are obtained by means of these tapes acquire damping properties, they perfectly resist vibrations and buffing loads. Moreover, some of them provide good sealing and insulation characteristics as well as adhesive performance in a wide range of temperatures. The assortment of RADEX double-sided adhesive tapes includes various combinations of special rubber and acrylic glues with different foams like polyurethane, polyethylene, acryl and various elastomers.

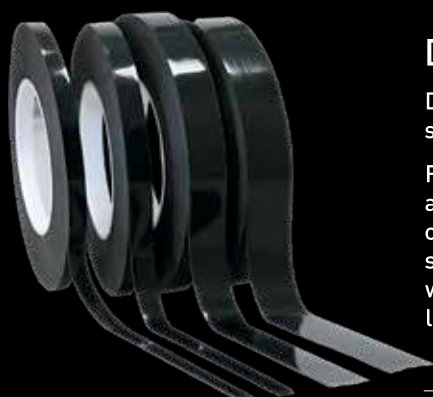


DOUBLE-SIDED HIGH STRENGTH ACRYLIC HSA TAPE

Double-sided mounting adhesive tape of red color based on acryl carrier. It is supplied in a roll. It is resistant to gasoline, oils, lubricants, solvents, UV, moisture and temperature up to 120°C. It also has high wear and sliding resistance.

Function: double-sided acrylic tape is a durable way for assembling and vibration-proof bonding of trim, body side moldings, signs, etc., on car body. It exceeds adhesion strength of double-sided tape with polyethylene carrier. Temperature of use should be in a range from +15°C to +30°C. Clean the surface from dust and dirt. Stick double-sided acrylic tape to a surface with pressure as it is treated with the pressure sensitive adhesive. The indicated level of performance will be reached after a bonding period of 24 hours at 23°C.

Art.	Size	Thickness	Package
110006	6 mm x 10 m	0.8 mm	1/10 pcs.
110009	9 mm x 10 m		
110012	12 mm x 10 m		
110019	19 mm x 10 m		
110025	25 mm x 10 m		



DOUBLE-SIDED MOUNTING ADHESIVE DSA TAPE

Double-sided mounting adhesive tape of black color based on polyethylene carrier. It is supplied in a roll. It is resistant to gasoline, oils, solvents, UV and temperature up to 120°C.

Function: double-sided adhesive tape is a durable and cost-effective way for assembling and vibration-proof bonding of trim, body side moldings, signs, etc., on car body. Temperature of use should be in a range from +15°C to +30°C. Clean the surface from dust and dirt. Stick double-sided mounting adhesive tape to a surface with pressure as it is treated with the pressure sensitive adhesive. The indicated level of performance will be reached after a bonding period of 24 hours at 23°C.

Art.	Size	Thickness	Package
110109	9 mm x 10 m	0.95 mm	1/10 pcs.
110112	12 mm x 10 m		
110119	19 mm x 10 m		
110125	25 mm x 10 m		



TRANSPARENT DOUBLE-SIDED ULTRA MOUNTING ADHESIVE UMA TAPE

Transparent thin double-sided ultra mounting adhesive tape based on polyester carrier. It is supplied in a roll. It is resistant to gasoline, oils, solvents, UV, moisture and temperature up to 120°C.

Function: transparent double-sided ultra mounting adhesive tape is a durable way for assembling and vibration-proof bonding of trim, body side moldings, signs, etc., on car body. Temperature of use should be in a range from +15°C to +30°C. Clean the surface from dust and dirt. Stick Transparent double-sided ultra mounting adhesive tape to a surface with pressure as it is treated with the pressure sensitive adhesive. The indicated level of performance will be reached after a bonding period of 24 h at 23°C.

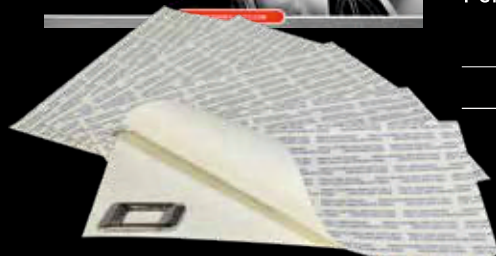
Art.	Size	Thickness	Package
110212	12 mm x 25 m	0.2 mm	1/10 pcs.
110219	19 mm x 25 m		



LOGO TAPE

Innovative glue strip for the replacement of emblems on vehicles after damage. The best time saving alternative to the repurchase of emblems.

Specification: car wash resistant. Temperature resistance: -40°C to $+90^{\circ}\text{C}$. Permanent adhesion after 24 hours.



Art.	Size	Package
110300	100 x 200 mm	5 pcs.

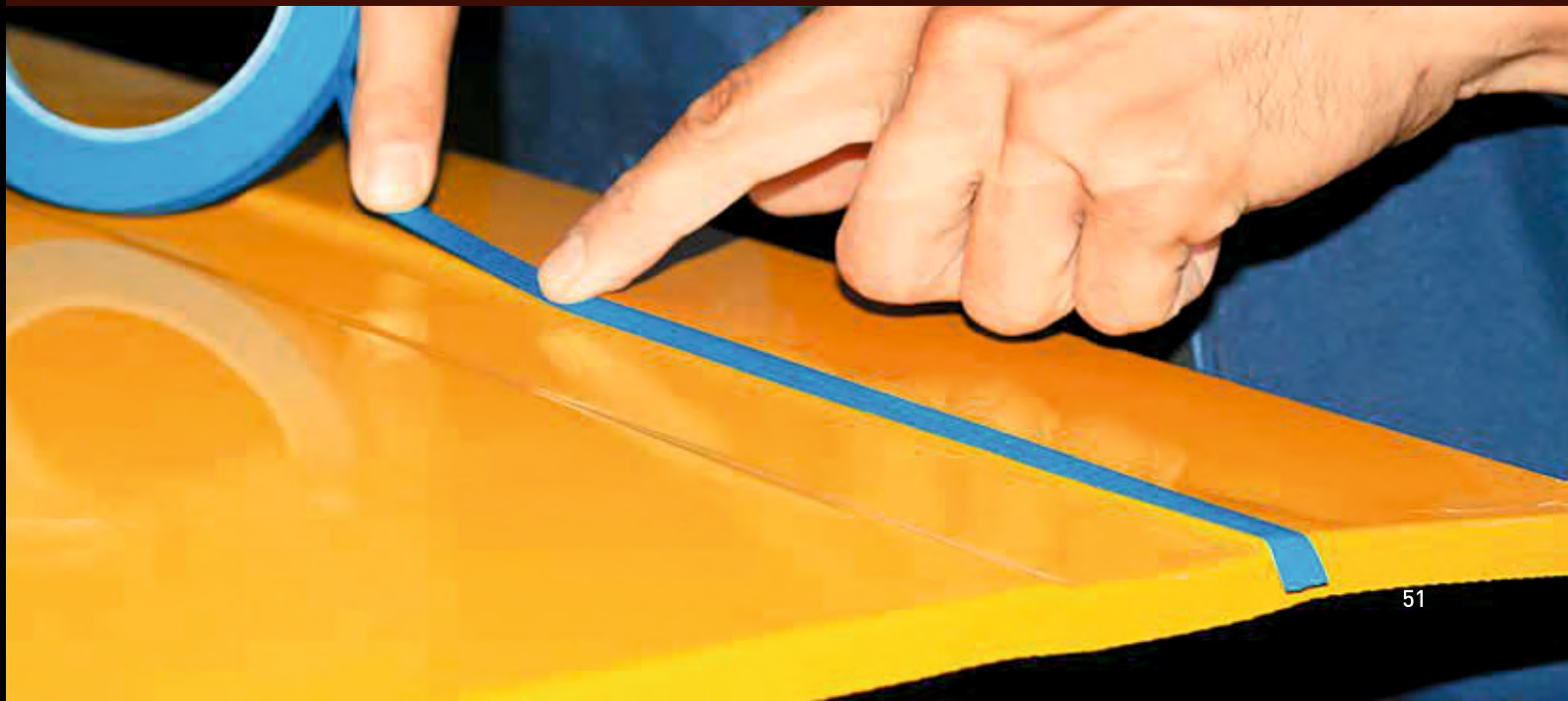
RECOMMENDATIONS ON THE USE OF DOUBLE-SIDED ADHESIVE TAPES HSA, DSA AND UMA:

Tapes should be used at a temperature of $+15^{\circ}\text{C}$ to $+30^{\circ}\text{C}$.

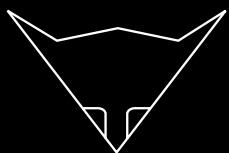
It is necessary to clean the surface from dust and dirt.

Sticking the tape by pressing the surface, as a pressure sensitive adhesive applied to it.

Stated tape performance achieved 24 hours after bonding to the surface and at 23°C .



ACCESSORIES



Paint accessories are an unexpendable attribute of each bodyshop. These materials are intended to simplify the painter's work and increase the quality level of his work. The RADEX accessories range is represented with paint strainers, mixing cups and lids, spray sample metal plates, etc.







PAINT STRAINERS

Paint strainers are disposable paper filters with 125 or 190 micron nylon mesh. The glue is applied to the exterior surface in laminating the nylon mesh to the paper. No direct contact between the solvent and the glue, thus avoiding any possibility of contamination of the base/clear being strained. All imprinting is done on the outside surface avoiding any direct contact between the solvent and inks. This design increases the resistance of the strainers by 2 to 3 times (depending on the solvent strength). Nylon mesh has equal cells that make the filtering process ideal.

Function: disposable paint strainers are intended for filtering any types of paint. 125 micron strainers are used for water-based paint filtration. 190 micron strainers are used for solvent based paint filtration.

Art.	Cell size	Package
360001	125 micron	250/1000 pcs.
360002	190 micron	



SPRAY SAMPLE METAL PLATE

Primed spray sample metal plates with black line.

Function: primed spray sample metal plates are intended for paint color matching and paint coverage control. Used for both solvent and water-based paints. On the back side of the plates a space is provided for making notes about paint article number, etc. There is a hole in the plates for convenience of storing. Spray sample metal plates allow to collect personal database of colors and shades.

Art.	Size	Color	Package
680000	105 x 150 mm	light grey	100/1000 pcs.
680001		white	
680002		dark grey	



PLASTIC NOZZLE

Plastic nozzles for sealants and adhesives in cartridges and tubes. Threaded 15 x 1.5 mm.

Art.	Size	Package
410050	15 x 1.5 mm	100 pcs.



RADEX PRO PRESSURE SPRAYER

RADEX PRO pressure sprayer: the manual sprayer is a large bottle intended for work with any antislip cleaner. It is steady against all kinds of solvents.

Art.	Volume	Package
681000	1 L	1 pc.

RADEX SHAKING CUPS WITH LIDS FOR PAINT, ETC.

Shaking cups with lids. Also are suitable for storing any WB or solvent liquids.

Each cup is supplied with an airtight sealing lid that allows to store and transport ready mixed paints and other liquids.



Art.	Volume	Package
620155	155 ml	1110 pcs.
620280	280 ml	432 pcs.
620365	365 ml	415 pcs.
620565	565 ml	290 pcs.
621180	1180 ml	170 pcs.
622000	2000 ml	84 pcs.

RADEX PREMIUM MIX CUPS AND LIDS

Disposable transparent paint mixing cups with lids for paint preparation made of polypropylene. Cups and lids are solvent resistant, material is not degradable. Cups have clearly printed mixing ratios.

Function: disposable cups are intended for paint preparation according to the following basic ratios: 2:1, 3:1, 4:1, 5:1 with ability to add thinners 10, 15, 20, 25 % for each ratio taken. Cups can be supplied with lids to protect the paint.



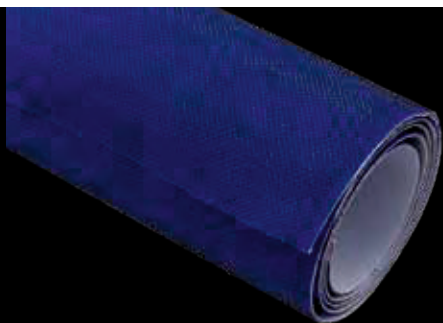
	Art.	Volume	Package
Cups	620385	385 ml	200 pcs.
	620750	750 ml	
	621400	1400 ml	
	622300	2300 ml	
Lids	630385	385 ml	200 pcs.
	630750	750 ml	
	631400	1400 ml	
	632300	2300 ml	

TOUCH-UP BOTTLES

Touch-up bottles are in polyester transparent plastic, externally graduated. Suitable for spot repairs and retouch. Easily fillable thanks to the large opening. The package includes a metal ball for precise color mixing.



Art.	Volume	Package
681107	50 ml	60 pcs.



SELF-ADHESIVE HOOKIT MATERIAL IN A ROLL

To apply on worn pads or handblocks as replacement and increase the pad's life.

Art.	Size	Package
681102	1.45 x 1 m	1 pc.



WHITE RUBBER TROWEL

Highly flexible rubber trowel for creating complex shapes. Easy to wash and care after use.

Art.	Size	Package
681005	10 x 7 x 0.5 cm	1/24 pcs.



PAINT MIXING AND CAN OPENING STICK

Metal stick is made for paint product mixing and opening metal cans. Tool is perfect for 1L and 4L cans. They have plastic handle for easy use.

Art.	Package
681109	10 pcs.



MICROBRUSH

Mini brush suitable for paint retouch, in dust-saving package of 100 pcs.

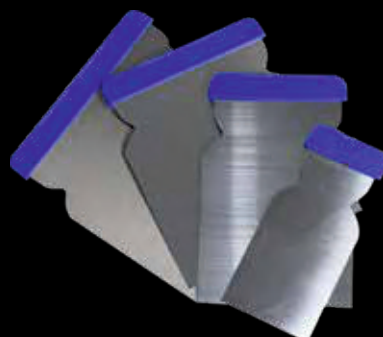
Art.	Package
681108	100 pcs.



FLAT NYLON BRUSH

Brush with nylon bristles recommended for the application of masses, bitumen-based products and synthetic resin-based products – RADEX SEAL BS, etc.

Art.	Width	Package
681114	25 mm	12 pcs.



FILLING KNIFE SET 4 PCS.

The form filling knives allow to put a thin layer, especially when regenerative or repair work demands absolute accuracy.

Art.	Package
681002	1/60 sets

RADEX

R.C.S

RADEX CUP SYSTEM



ADVANTAGES

- ☞ Easy to use
- ☞ Fewer components
- ☞ Secure system to use
- ☞ Stable paint flow
- ☞ Easy to add paint during the painting process
- ☞ Substantial saving on spray gun cleaning liquids and thinners
- ☞ Minimal investment to start painting
- ☞ No need for separate dosing cups for accurate paint mixing materials (RTS)
- ☞ One system for full painting cycle, from mixing, filtration to paint storing
- ☞ Faster painting process



CUP

Art.	Volume	Package
750750	750ml	in box 50 pcs.
950950	950ml	in box 50 pcs.



CONICAL LID

Art.	Volume	Package
750130	with 130 μ filter for 750ml cups	50 pcs.
950130	for 950ml cups	50 pcs.
750190	with 190 μ filter for 750ml cups	50 pcs.
950190	for 950ml cups	50 pcs.



SMALL LID

Art.	Package
750756	50/4000 pcs.



FLAT LID FOR STORING PAINT

Art.	Volume	Package
750755	for 750ml cups	100 pcs.
950955	for 950ml cups	100 pcs.



ADJUSTABLE SPRAY GUN HOLDER

681120



750001 (M16x1,5)
Male thread



750002 (M16x1,5)
Female thread



750003 (TR20X4)
Trapezoidal thread



750004 3/8" – 19 BSP
Male thread



750005 1/4" – 9 BSP
Male thread



750006 (M18x1,5)
Female thread

EQUIPMENT



Wide range of RADEX professional equipment in ergonomic design for applying antichip and anticorrosion coatings, sealants and glues allows to spread these materials quickly and well. Easy-to-work equipment becomes an irreplaceable tool in any bodyshop. All presented equipment operates with high efficiency and reliability.





SPRAY GUNS

All RADEX Spray guns are lightweight, ergonomic and have easy trigger motion.

AGR ANTICHIP SPRAY GUN WITH ADJUSTABLE NOZZLE

Professional gun with adjustable nozzle intended for applying antichip coatings from 1L and 2L cans.

Advantages:

- Adjustable nozzle for reproducing textured coating structure of any thickness and difficulty
- Ability to use with 1L and 2L cans
- Ability to use with water-based paints

Technical characteristics:

- Material: Diecast aluminum and forged brass
- Working pressure: 3-6 Bar
- Approximate air consumption: 150-200 l/min
- Net weight: 534 g

Art.

410010

Package

1 pc.

AG ANTICHIP SPRAY GUN

Spray gun intended for applying antichip coatings from 1L and 2L cans.

Advantages:

- Ability to use with 1L and 2L cans
- Ability to use with water-based paints
- Reasonable price

Technical characteristics:

- Material: Diecast aluminum and forged brass
- Working pressure: 3-6 Bar
- Approximate air consumption: 150-200 l/min
- Net weight: 400 g

Art.

410011

Package

1 pc.

AGU UNIVERSAL ANTICHIP SPRAY GUN

Universal antichip spray gun intended for applying antichip coatings, bitumen underbody coatings and inner cavity waxes from 1L and 2L cans.

Advantages:

- Ability to use with 1L and 2L cans
- Ability to use with water-based paints
- Supplied with 500 mm plastic tube of Ø10 mm and special nozzle for 360° spraying in hard to reach places

Technical characteristics:

- Material: Die-cast aluminum and forged brass
- Working pressure: 3-6 Bar
- Approximate air consumption: 150-200 l/min
- Net weight: 554 g



Art.	Package
410012	1 pc.

HSG STANDARD HAND GUN FOR ADHESIVES AND SEALANTS

Manually-operated gun intended for applying sealants and glues in standard 310 ml plastic or aluminum cartridges.

Advantages:

- Reliable construction
- Intended for 310 ml cartridges
- No need of compressed air
- Easy use and handling
- Reasonable price

Technical characteristics:

- Material: Gun body and the trigger: Die-cast aluminum. Cartridge holder: Steel
- Net weight: 760 g



Art.	Package
410021	1 pc.

HCG HAND GUN FOR ADHESIVES AND SEALANTS IN CARTRIDGES AND TUBES

Professional manually-operating gun intended for applying sealants and glues in standard 310 ml plastic or aluminum cartridges or standard 300 ml and 400 ml bags.

Advantages:

- Reliable construction
- Intended for 310 ml cartridges and tubes
- No need of compressed air
- Easy use and handling

Technical characteristics:

- Material: Gun body and the tube: Die-cast aluminum. Ring nuts: Special plastic
- Net weight: 780 g



Art.	Package
410022	1 pc.



PG PNEUMATIC GUN FOR SEALANTS

Professional universal pneumatic gun intended for applying sealants and glues in standard 310 ml plastic or aluminum cartridges or standard 300 ml and 400 ml bags.

Advantages:

- Equipped with pressure regulator
- Equipped with pressure release valve
- Intended for cartridges and tubes
- Tube length 370 mm
- Perfectly balanced
- Ergonomic handgrip made of solvent resistant plastic
- The piston's special cone design ensures a minimal amount of product waste

Technical characteristics:

- Material: Gun body: Anodized aluminum. Handgrip: Plastic
- Working pressure: 6-10 Bar
- Approximate air consumption: 150-200 l/min
- Net weight: 1225 g



Art.	Package
410031	1 pc.

PGS PNEUMATIC GUN FOR SPRAYABLE SEALANTS

Professional universal pneumatic gun intended for applying sealants and glues as well as sprayable sealants packed in standard 310 ml plastic or aluminum cartridges.

Advantages:

- For plastic or aluminum cartridges
- No overspray due to innovative spraying system
- Thanks to the gun's hermetic lock there is no need to disconnect the cartridge
- Universal gun for extruding and spraying operations
- Special treatment of the gun avoids material sticking

Technical characteristics:

- Material: Drop-forged brass nickel-plated
- Working pressure: 3-5 Bar
- Approximate air consumption: 200-300 l/min
- Nozzle size: 1.6 mm
- Net weight: 1038 g



Art.	Package
410032	1 pc.

DJ GUN FOR W/B PAINT DRYING

Accelerated drying of surfaces painted water-based materials. Reduced cycle times in the spray booths. Low investment cost and easy handling.



Art.	Package
400000	1 pc.





PRO BLOWING GUN

Professional blowing gun with pressure stabilizer, progressive adjustment of the airflow 30° curved 90 mm.

Art.	Package
400093	1 pc.



PRO APPLICATOR FOR GLUES AND ADHESIVES

Professional handle gun to apply and extrude adhesives and glues contained in standard 25+25 two-component cartridges.

Technical characteristics:

- Plastic cradle & metal body
- Mixing ratio 1:1
- Weight 430 g

Art.	Package
410033	1 pc.



SPRAY GUN CLEANER SET

Complete set of tools for cleaning and maintaining spray guns. 22 pcs. in plastic box.

Contents:

- 6 needles + handle
- Several special brushes + handle
- Paint gun lube, etc

Art.	Package
681001	1 pc.





SANDING HAND BLOCKS

RADEX supplies to the market different types of abrasive materials both with and without holes made precisely according to a delivered configuration of back up pads and hand blocks. The most cost-effective version is the one without dust extraction. However, most advanced are hand blocks with dust extraction, and unlike similar products, the design of these tools is optimized for the productivity of RADEX abrasive materials. RADEX hand blocks have an absolutely flat working surface for fastening abrasive sheets and an ergonomic design that provides an ideally processed surface and a high level of convenience during work.



SANDING HAND BLOCKS WITHOUT DUST EXTRACTION

Hand tools for dry sanding without dust extraction are suitable for any type of surface. Exceptional functionality, absolutely flat working surface, high quality materials, special ergonomic, rubber grip and exclusive design are the most striking features of RADEX sanding hand blocks without dust extraction. Attaching the sanding paper in sheets to the hand blocks is carried out by means of Velcro system.

Function: hand tools for dry sanding without dust extraction suitable for any type of surface with the use of abrasive paper sheets without holes.

Art.	Size	Package
500125	70 x 125 mm (small)	1 pc.
500198	70 x 198 mm (medium)	
500400	70 x 400 mm (long)	



SANDING HAND BLOCKS WITH DUST EXTRACTION

Hand tools for dry sanding with dust extraction suitable for any type of surface. Exceptional functionality, absolutely flat working surface, high quality materials, special ergonomic, rubber grip and exclusive design are the most striking features of RADEX sanding hand blocks with dust extraction. In the soleplate of the hand blocks with dust extraction there are holes, the quantity of which should match the quantity of holes in the abrasive sheets used. Attaching the sanding paper in sheets to the hand blocks is carried out by means of Velcro system. For dust extraction purposes in the hand blocks there is a special hole for connection with vacuum cleaner. Due to a special attachment the hose for dust extraction easily rotates providing convenience at work.

Function: hand tools for dry sanding with dust extraction suitable for any type of surface with the use of abrasive paper sheets with holes.

Art.	Size	Number of holes	Package
600125	70 x 125 mm (small)	8	1 pc.
600198	70 x 198 mm (medium)	8	
600400	70 x 400 mm (long)	14	



SANDING HAND BLOCKS WITH/WITHOUT DUST EXTRACTION

Flexyhand tools for dry sanding with and W/O dust extraction suitable for any type of surface. Exceptional functionality, absolutely flat working surface, high quality materials, special ergonomic, rubber grip and exclusive design are the most striking features of RADEX sanding hand blocks with dust extraction. In the soleplate of the hand blocks with dust extraction there are holes, the quantity of which should match the quantity of holes in the abrasive sheets used. Attaching the sanding paper in sheets to the hand blocks is carried out by means of Velcro system. For dust extraction purposes in the hand blocks there is a special hole for connection with vacuum cleaner. Due to a special attachment the hose for dust extraction easily rotates providing convenience at work.

Function: suitable for any types of surfaces with the use of abrasive paper sheets with holes. According to the sanding surface, angle can be adjusted and changed as needed.

Art.	Size	Dust extraction	Package
500401	70x400 mm	yes	1 pc.
500402		no	



Equipment



HOSE FOR DUST EXTRACTION

Flexible, light and convenient 4 meter plastic hose with high wear resistance for connecting the hand blocks with dust extraction to vacuum cleaner.

Function: hose is intended to use with hand blocks with dust extraction for quick and high-quality dust removal.

Art.	Size	Package
600001	4 m, Ø 21 mm	1 pc.



KIT FOR DRY SANDING WITH ABRASIVE DISCS

Hand tool kit for dry sanding with abrasive discs and dust extraction suitable for any type of surface. Kit includes 3 adapters (1 flat, 1 concave and 1 convex) all with Multi Holes pattern. Suitable for all the paper discs and net discs, 1 air regulator valve, 1 hose adapter diam. 29 mm and 1 main handle in grey color.

Specification: attaching the sanding paper in sheets or discs to the hand blocks is carried out by means of Velcro system. For dust extraction purposes in the hand blocks there is a special hole for connection with vacuum cleaner.

Art.	Package
600150	1 pc.



KIT SANDING BLOCK WITH 3 CHANGING BACKINGS + ADAPTER

PU hand-block is characterized by an anatomic self-gripping handle. Suitable for sanding small surfaces or difficult areas.

Art.	Package
681113	1 pc.



SANDING BLOCK FOR Ø 150MM DISCS

Manual PU sanding-block, to use with self-gripping abrasive discs in Ø 150 mm.

Art.	Package
681112	1 pc.

DISPENSERS AND HOLDERS



ROTATING PANEL STAND

A rotating panel stand for 6 spare parts is designed for the busy painter. This panel stand will take any panel from a wing through to a large bonnet. Simply mount the panel onto the four fully adjustable hooks and then let the stand take the weight of the panel and do the rest for you.

Art.	Size	Package
660050	202 x 85 cm	1 pc.



X-TRESTLE WITH BUMPER SUPPORTS

For holding bumpers and doors, for either preparation or painting. Trestle is galvanized and has a metal axis locking system and two bumper supports. Highly durable for heavy work. Adjustable working height. Equipped with rubber buffers. Can be used on any floor surface.

Art.	Size	Package
660060	128 x 60 cm	1 pc.



UNIVERSAL PAINT RACK ULS

A mobile stand designed for painting bumpers, spoilers and other smaller parts of the car body.

Art.	Size	Package
660095	100 - 200 cm x 110 - 190 cm (regulated)	1 pc.



CLASSIC TRESTLE

Very heavy duty workshop trestle that can be folded up once the job is done. Hundreds of uses and is an absolutely essential piece of kit for every bodyshop. The sled type feet make it very sturdy and stable and allows to slide it over the grids in ovens with no problem.

Art.	Size	Package
660070	115 x 98 cm	1 pc.



PANELMASTER

RADEX universal rotating panelstand - panelmaster. Simple to use and very versatile. This stand will handle doors, tailgates, bonnets and wings. Large 200mm rubber tyres can operate over spraybooth grids and workshop floors easily.

Art.	Size	Package
660090	90 x 90-140 cm (regulated)	1 pc.



DISPENSER FOR MASKING PAPER

Four roll dispenser accepts rolls up to 120cm and features storage tray underneath dispenser unit. Very stable construction. Due to the specially designed knives, it is very easy to cut paper rolls. Paper Trolley is optimized for fast masking work on all kind of areas which are supposed to be covered and protected against paint mist. Size 150 x 128cm.

Art.	Rolls	Package
660080	4+1	1 pc.
660083	3	
660085	5	



DISPENSER FOR MASKING FILM

Trolley for masking film roll is a mobile dispenser, for RADEX masking film or any other films. RADEX dispenser is optimized for fast masking work and is suitable to mask vehicles comfortably by only one single operator.

Art.	Size	Package
660100	113 x 82 cm	1 pc.



DISPENSERS FOR PAPER

RADEX dispensers for different kinds of papers and towels. Tearing element helps to block the roll in the right position and tear off one or more cloths. Very stable constructions.

Art.	Size	Package
660120	stand 55 x 92 cm	1 pc.
660130	wall	



SPRAY GUN AND FILTER HOLDER

RADEX spray gun stand incorporating a paint filter holder for easy filling of spray gun whilst filtering paint. Works with most popular sizes of spray guns and cups. Wall or bench mount.

Art.	Size	Package
660110	9 x19 cm	1 pc.



SPRAY GUN HOLDER WITH MAGNET

Holder is made of metal with a magnet mount, which allows quickly and simply attach it to the walls of the spraybooth. Designed to hold two spray guns.

Art.	Size	Package
681110		1 pc.



PRODUCTS FOR SPRAY BOOTH



NO DUST

New RADEX NO DUST anti dust cabine protect liquid, volume 5L.

The basic advantages of RADEX NO DUST:

- Economy (+ 11 m²/l)
- Long term anti dust protection
- Easy to wash off
- Termo resistance up to 90°C

Art.	Volume	Package
700000	5 L	1 pc.



CEILING FILTER

High quality diffusion filter media, made from 100% branded polyester fibre and progressively structured with reinforced backing. RADEX ceiling filter corresponds to F5/EU5 filtration efficiency class.

Art.	Size	Package
360650	2 x 20 m	roll



PAINT ARRESTOR

For paint overspray removal we offer monofilament glassfibre media with progressive structure and laminate backing on air leaving side, making the product rigid and stable. This filter also protects equipment and environment from paint contamination. General use – spray booth floors.

Art.	Size	Package
360065	0.65 x 20 m	roll
360075	0.75 x 20 m	
360100	1.0 x 20 m	

HEADLIGHT RESTORATION



HEADLIGHT RESTORATION KIT

Headlight Restoration KIT is an innovative system that allows restoring the sunburned headlights, giving them the original state and brightness and perfect finish in a very fast and economical way. To make the headlights brighter and more perfect, read the instructions, given with kit, carefully. The product should not be exposed to the sun- the restoration work must be done indoors.

Art.	Package
433000	1 pc.



HEADLIGHT RESTORATION LIQUID

RADEX Headlight restoration liquid is a polymeric liquid whose vapor, at appropriate temperature, allows to restore the sunburned headlights, quickly replacing the original gloss and giving a perfect finish. Fast drying. Very easy To apply. High gloss. Ideal for application in polycarbonate headlamps.

Application: Wipe the surface of the headlights with a clean cloth. Isolate the boundary zones with masking paper and paint tape. Depending on the damage of headlights, use the following sandpapers: P150, P180, P240, P320, P500, P800, P1000, and P1200. For sublime finish, use the P1500 and P2000 sandpapers at the end. The sanding process can be done manually or by machine. After the sanding process, pour 60ml to 80ml RADEX Headlight restoration liquid into the cup. Turn the equipment on and wait for about three minutes. The product vapors will start to emerge from the cup tube and the process begins. Make sure that the released vapors is in contact with the entire headlight surface. With maintaining a uniform speed you will verify that the area, exposed to the steam, will immediately become transparent and smooth.

Art.	Volume	Package
433001	600 ml	1/6 pcs.

PNEUMATIC TOOLS





To improve the efficiency and comfort in working with metal and other surfaces RADEX presents professional pneumatic tools for grinding and polishing.





RANDOM ORBITAL SANDER 150 MM PAD

Pneumatic sander has a dust extraction system and superior handling due to low weight. Patented drive system. Low level of vibration. Speeds up to 10,000 rpm. The machine is equipped with dust bag.

Art.	Eccentric	Number of holes	Package
420050	5 mm	15	1 pc.
420025	2.5 mm		



2-HAND RANDOM ORBITAL SANDER 150 MM PAD

This pneumatic orbital grinder is designed to create a precise surface shape by grinding a putty or filling primer. An additional handle can be added to the body of the grinder on both the right and left side.

It is equipped with an autonomous dust extraction system (tube and dust bag). Vacuuming can also be done traditionally - using a vacuum cleaner.

Art.	Pad	Eccentric	Number of holes	Package
420252	150 mm	5 mm	15	1 pc.



RANDOM ORBITAL SANDER 15 MM ECCENTRIC

Pneumatic sander with dust extraction system. Powerful, quiet, easy to use. Intended for final polishing of surfaces and is designed for long-term use.

Art.	Pad	Eccentric	Number of holes	Package
420255	125 mm	15 mm	15	1 pc.



2-HAND GEAR-DRIVEN SANDER 150 MM PAD

Planetary sander with dust extraction for fast material removal and coarse grinding, speed control. Sanding pad with VELCRO mounting system.

Art.	Eccentric	Add. grip	Number of holes	Package
420450	5 mm	no	6	1 pc.
420452		yes		



AIR ANGLE DIE GRINDER

Pneumatic angle grinder mini-stripping machine is ideal for cleaning surfaces from rust, dirt, etc. Precision design, which is equipped with a double ball bearing. The speed controller has a protective mechanism. Maximum speed 18,000 rpm.

Art.	HP	RPM	Package
420510	0.5	18,000	1 pc.
420515	0.75		



LOW SPEED, LOW NOISE AIR DIE GRINDER

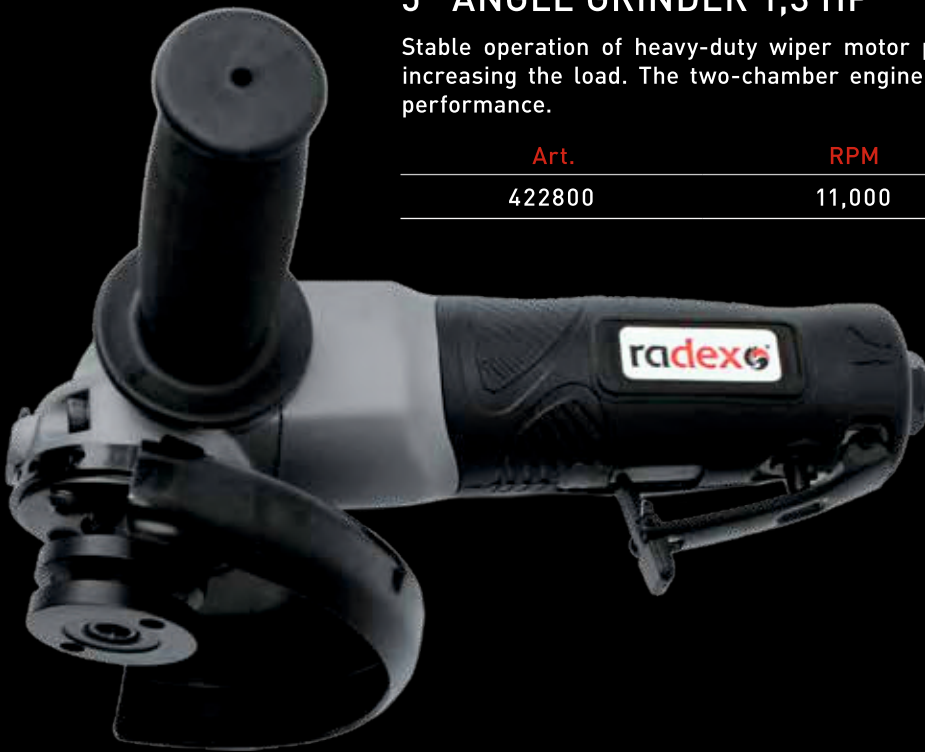
Straight grinding machine has a mini-durable and lightweight composite design, convenient controllers, which allows you to adjust the speed of rotation.

Art.	RPM	Package
420566	3,600	1 pc.

5" ANGLE GRINDER 1,3 HP

Stable operation of heavy-duty wiper motor pneumatic grinder is achieved by increasing the load. The two-chamber engine has high power, high torque and performance.

Art.	RPM	Package
422800	11,000	1 pc.



MINI ORBITAL SANDER BACKING PAD 30 MM

Pneumatic, angle mini rotary machine for cleaning/sanding hard to reach surfaces.



Art.	Eccentric	Package
420920	2 mm	1 pc.



RUST & PAINT REMOVAL TOOL

Tool for stripping works. The advantages of the pneumatic tool for removing rust and paint is the best result for performance, durability, surface quality, ease of operation and balance.

Art.	Dust extraction	Package
420100	no	1 pc.
420110	yes	



7" ANGLE POLISHER

This tool can be used in areas where conventional polishing machines can not work. Equipped with a rotary knob 180°, protection against unexpected start and stop button shaft. Silenced construction.

Art.	RPM	Package
420800	2,500	1 pc.



ANGLE SANDER/POLISHER

Equipped with a rotary knob 180°, protection against unexpected start and stop button shaft. Silenced construction.

Art.	RPM	Package
420810	1,800	1 pc.



RUST & PAINT REMOVAL TOOL KIT WITH ALL CLEANING DISCS

One of the main advantages of the set - using at all stages of work with the help of different accessories, you can select the desired level of hardness brushes.

The kit includes:

- Pneumatic tool for removing rust and paint
- Wheels for removal of rust and paint
- Base for the discs and brushes

Art.	Package
420150	1 set



PNEUMATIC TOOL AIR HOSE WITH 50 CM OUTPUT

Specially designed air connection for pneumatic tools to divert exhaust air away from the user during operation. Makes the use of pneumatic tools more convenient than ever.

Art.	Package
422270	1 pc.



DIGITAL PRECISION PRESSURE REGULATOR

Lightweight and modern air pressure regulator with digital scale. Can be attached to the wall or directly to the equipment. Air inlet and outlet are compatible with 1/4" internal thread.

Art.	Package
420001	1 pc.



SANDING AND BACK-UP PADS



BACK UP PAD FOR ABRASIVE DISCS

Universal back up pads for abrasive discs are generally composed of a high quality plastic and rubber and specially designed surface for attaching abrasive discs with Velcro system. Materials that are specially chosen for specific characteristics of weight, stability and mechanical resistance prevent vibration during sanding.

Function: universal back up pads for abrasive discs fits all the types of modern sanding machines, both electrical and pneumatic and are designed for attaching abrasive discs with 6+1, 8+1 and 15 holes with Velcro system. They are recommended to use in such areas as car repair, wood and metal working, etc. Universal back up pads for abrasive discs fits the requirements of all the leading manufacturers of orbital sanding machines.

Art.	Size	Number of holes	Package
500002	Ø 150 mm	15	1 pc.
500556	Ø 150 mm	Multihole	1 pc.

Perfect in combination with Random orbital sanders, art. 420025; 420050; 420252 (see "Pneumatic tools" section)



PROTECTIVE PAD

Protective pad for disc protection.

Art.	Size	Number of holes	Package
500003	Ø 150 mm	15	1 pc.

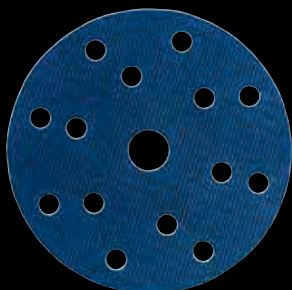
UNIVERSAL SOFT INTERFACE PAD

Universal soft interface pads for finish made of wear resistant polyurethane foam with Velcro system for abrasive discs.

Function: universal soft interface pads are intended for use with microfinishing abrasive film discs for getting an ideal quality surface. They also provide fine surface contouring for the abrasive discs on difficult shapes of modern vehicles.

Art.	Size	Number of holes	Package
500004	Ø 150 mm	15	1 pc.

Perfect in combination with Random orbital sanders. For using with RADEX universal back-up pad, art. 500002 (see "Pneumatic tools" section)



ADHESIVE SELF-GRIPPING ADAPTER DISC

Self-gripping material are used to apply on worn orbital sanding machine pads as replacement and increase the pad's life.

Art.	Size	Number of holes	Package
681103	Ø 150 mm	15	1 pc.



VELCRO PAD FOR ROTARY MACHINE, M14

Universal pad in various sizes for sanding and polishing discs.

Art.	Size	Package
500000	Ø 125 mm	1 pc.
500005	Ø 75 mm	
500555	Ø 152 mm	



MINI HAND BLOCK

Made in rigid microporous rubber, indicated for spot repair. Perfect for using with RADEX Micro abrasive sanding discs Ø 35mm.

Art.	Size	Package
681104	Ø 30 mm	1 pc.



TAKE AWAY KIT

The set contains a paint planer holder with a magnet and a rectified blade, suitable for removing dry paint-tears and embedded dust nips from the surfaces. The rectified blade is fixed on paint planer holder thanks to a magnet located in it, while the upper side of the holder has Velcro® for fixing mini sanding abrasive discs Ø35mm size.

Art.	Size	Package
681105	Ø 30 mm	1 pc.



DOUBLE SIDE ROUND HANDBLOCK

Manual PU Hand-block, suitable for all sanding operations, specially for denib sanding with P1500-P3000 grits on Ø35mm size abrasives.

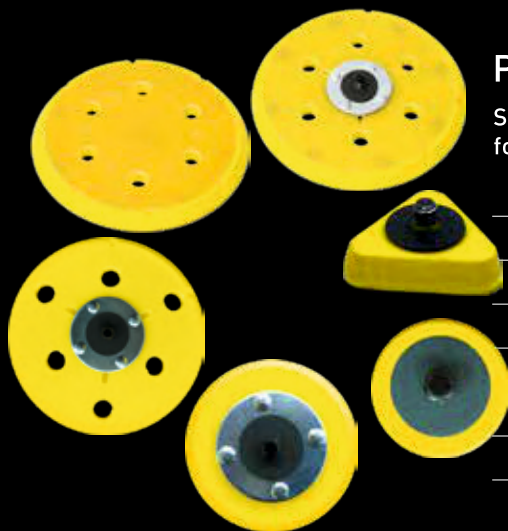
Art.	Size	Package
681106	Ø 35 mm	1 pc.



2" ROLOC PAD

Pad for using small diameter discs, intended for the local treatment of welds, tight spaces and local areas. Use with pneumatic tools.

Art.	Package
420500	1 pc.



PAD HOOK-UP

Sanding pad for abrasive discs is a high quality plastic and rubber mounting system for the holed abrasives with the VELCRO system.

Art.	Diameter	Number of holes	Package
421500	150 mm	15	1 pc.
421550	150 mm	6	
421556	125 mm	7	
421555	75 mm	0	
421557	30 mm	0	
421558	38 mm	0	

FIBRO CLEANING DISC

Fiber disc is designed to remove rust or paint from metal and plastic surfaces. The quick coupling makes it easy connecting to the instrument pad and replacing it with a new disc. Max 5000rpm. It is recommended to use it with the RADEX Fibro disc pad art. 420500 and angle grinder art. 420510; 420515.

Art.	Colour	Size	Package
420311	Black	60 mm	25 pcs.
420312	Black	76 mm	
420321	Purple	60 mm	
420322	Purple	76 mm	
420332	Blue	76 mm	

NYLON FIBER DISC

Nylon fiber disc is designed to remove rust or paint from metal surfaces. Max 5000rpm. It is recommended to use with the RADEX small shaft grinding kit art. 681111.

Art.	Colour	Size	Package
420362	Black	150 mm x 13 mm	10 pcs.
420371	Blue	100 mm x 13 mm	
420372	Blue	150 mm x 13 mm	
420391	Black	115 mm x 13 mm	
420392	Blue	115 mm x 13 mm	



In combination with Small shaft grinding.

Art.	Package
681111	1 pc.



STRIPPING WHEEL

The wheel consists of a porous material impregnated with abrasive, represents an excellent alternative to a wire brush in removing lacquers, adhesives, and rust. The flexible structure of the wheel is particularly important in the processing of relief and inaccessible areas. Due to its volume structure, wheel does not become clogged and quickly removes any cover.

Art.	Size	Package
420102	30 x 105 mm	1 pc.



HUB

The central axis for metal brushes. Use with pneumatic tools.

Art.	Width	Package
420103	22 mm	1 pc.
420104	10 mm	



WIRE WHEEL

Wire brush from spring steel to clean rust and paint coatings.

Art.	Material	Size	Properties	Package
420901	Steel	22 x 105 mm	coarse	1 pc.
420904	Stainless steel			
420907	Steel	10 x 105 mm		
420910	Stainless steel			
420902	Steel	22 x 105 mm	medium	
420905	Stainless steel			
420908	Steel	10 x 105 mm		
420911	Stainless steel			
420903	Steel	22 x 105 mm	fine	
420906	Stainless steel			
420909	Steel	10 x 105 mm		
420912	Stainless steel			



RUBBER ERASER WHEEL

Rubber eraser wheels are created for removal of adhesives, strips, stickers and double-sided tape. The wheels do not damage or scratch the paint. Efficient and durable.

Art.	Size	Properties	Package
140907	15 x 90 mm	corded	1 pc.
140908	15 x 100 mm		
420101	30 x 105 mm		
140906	15 x 90 mm	flat	



PROTECTIVE CLOTHING



For protection against dirt and chemical pollutants RADEX represents different types of hi-tech protective clothes, which gives not only protection but convenience and comfort in use.





NITRILE DISPOSABLE GLOVES

Blue powdered high quality nitrile disposable gloves packed in 100 pieces in a dispenser box. These ambidextrous gloves have textured fingertips for enhanced grip, a rolled cuff for easy on/off and they are ideal for use in automotive, general maintenance and manufacturing applications.

Art.	Size	Package
102400	M	100 pcs.
102401	L	
102402	XL	



HIGH PERFORMANCE LATEX DISPOSABLE GLOVES

High performance disposable gloves packed in 100 pieces in a dispenser box. Gloves are several times stronger than nitrile, rubber or vinyl. Offers optimum comfort to hands that is combined with optimum protection. Powder free.

Art.	Size	Package
101402	M	50 pcs.
101400	L	
101401	XL	



PARTICULATE RESPIRATOR WITH EXHALE VALVE P2

Respirator with exhalation valve. Provides class P2 protection against toxic and wood dust, metal smoke and aerosols. Soft foam cushion inside and adjustable straps provides the wearer an easy, comfortable fit.

Art.	Package
101501	20 pcs.



BLUE POLYESTER OVERALLS

RADEX Polyester overalls are 100% polyester, silicone free, lint free, antistatic durable, light weight and comfortable. Provides sufficient air and vapor penetration. 2 way covered zipper and with front pocket. Elastic at ankle, waist and wrist. Hood with drawstring.

Function: RADEX Polyester overalls are protective suits for painting. Overalls are intended for protection against external pollution and chemical substances. Overalls can be used in automotive, aviation, air field, fuel and oil spheres.

Art.	Size	Package
101111	S	1/50 pcs.
101112	M	
101113	L	
101114	XL	
101115	XXL	
101116	XXXL	



BIB-TROUSERS

Bib-trousers made of 100% cotton. Features triple stitched seams on the outer side of the leg and on the bib, side slits with button, fly with zip, elastic waistband, front pockets with reinforced seams, rear pocket and right ruler pocket, bib pocket with two pockets, elastic shoulder straps with quick-fastening buckles and rear-bib.

Art.	Colour	Size	Package
102111	Grey	48	1 pcs.
102112		50	
102113		52	
102114		54	
102115		56	

PUTTIES



The most important considerations in the process of creating RADEX putties:

- Experience of the best technicians in Europe;
- High quality components for putty producing;
- High quality standards.





EASY LIGHT PLUS

Significantly increased amount of filler with a stable physical condition.

- Ball shaped elements
- Very light – hollow inside
- Resistant to solvents – no resin suction, what helps to react hardener + substancer
- New substance and form reduces the weight of putty (density ~ 880 g/l)
- Application is very smooth
- Better adhesion
- Time and sanding paper economy

Can be applied on polyester plastics, metal and aluminum surfaces.

Art.	Volume	Package
200301	1 L + hardener	1/6 pcs.



ALU PUTTY WITH ALUMINUM POWDER

Contains aluminum additives.

- Improved thermal stability ensures optimal adhesion
- Very low shrinkage on hardening time
- High elasticity
- Suitable for large surfaces

Can be applied on polyester plastics, metal, zinc and aluminum surfaces.

Art.	Volume	Package
200400	0.75 kg + hardener	1/12 pcs.

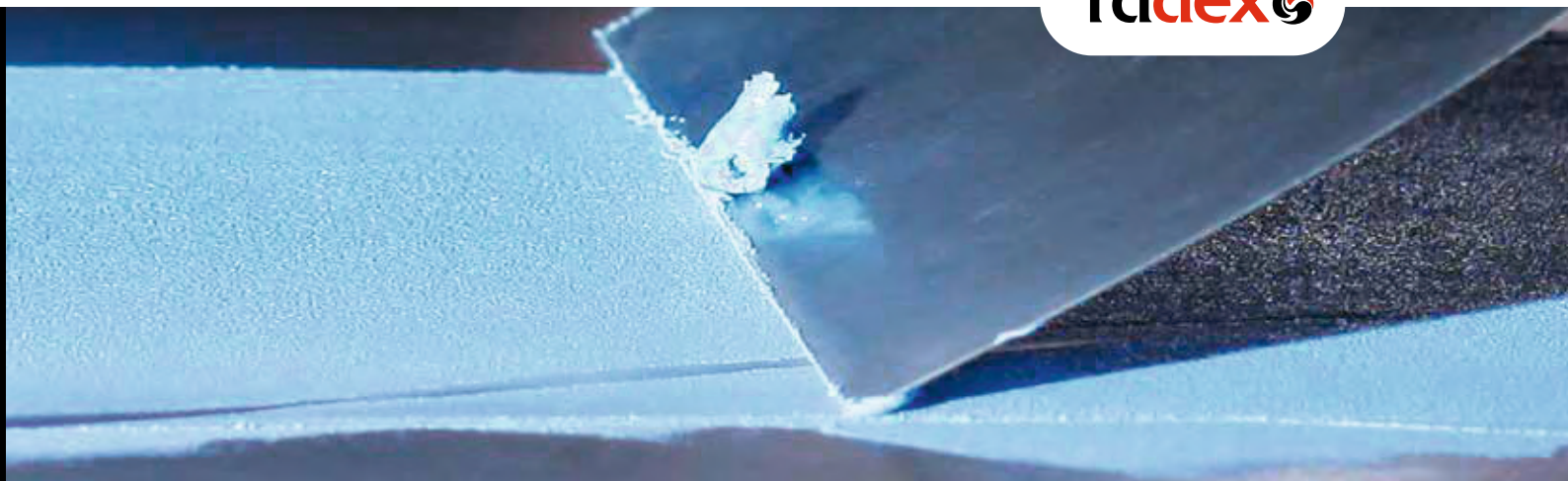


MULTI SOFT

- Multifunctional fill and fine putty with anti-shrinking properties
- Equipped with special additives for enhanced elasticity and significantly reduced shrinkage during the curing process
- This putty prevents contour marks after repair process
- Very soft and easy to sand

Can be applied on: all metal surfaces, including steel, galvanized steel, aluminum as well as to polyester substrates.

Art.	Volume	Package
200110	1.8 kg + hardener	1/10 pcs.



SOFT

Multifunctional, the most universal polyester putty.

- Good adhesion to different bases
- Convenient to repair large areas
- Ease of application, including a thin layer
- Easy to sand by any abrasive grade (fine and coarse)
- Small defects filling
- Creates a very smooth surface after application
- Reduces sanding time

Can be applied on: all metal surfaces, including steel, galvanized steel, aluminum as well as to polyester substrates.



Art.	Volume	Package
200200	1.8 kg + hardener	1/6 pcs.
200201	0.2 kg + hardener	1/24 pcs.

GREEN GLASS

Hardened with fiberglass.

- Has better flexibility than conventional putties because of elastic polyester resins and medium fibers
- Keeps high mechanical strength
- High adhesion on different surfaces and zinc

Can be applied on polyester plastics, metal, zinc and aluminum surfaces.



Art.	Volume	Package
200600	0.2 kg + hardener	1/24 pcs.
200601	1.8 kg + hardener	1/6 pcs.

PLASTIC FLEX

- Putty for plastics and plastic surfaces
- Has a very high elasticity, because of extra-plasticizer
- Excellent adhesion to most plastics (except polyethylene and Teflon)
- Good adhesion to polypropylene
- Can be used on unprimed surfaces

Can be applied on: plastics, with the exception of polyethylene and polytetrafluoroethylene (PTFE), metal, zinc and aluminum surfaces.



Art.	Volume	Package
200500	0.5 kg + hardener	1/12 pcs.



UNI

- Universal, can be applied to a wide range of surfaces
- Good for filling large and small surface defects
- Gives a smooth surface after sanding
- Keeps shape while sanding because of correctly selected putty
- Rapid achievement of a good hardness for sanding, including at low temperatures, reducing time

Can be applied on polyester plastic, metal, aluminum, zinc.

Art.	Volume	Package
200100	0.5 kg + hardener	1/18 pcs.
200101	1.8 kg + hardener	1/6 pcs.



UNI+ PUTTY

- Especially creamy fill and fine putty
- Adheres to all vehicle surfaces including zinc-coated
- Very easy application and shaping, short drying time and excellent sanding properties are the main features of this product

Can be applied on: all vehicle surfaces, including zinc-coated.

Art.	Volume	Package
200102	1.8kg + hardener	1/10 pcs.



MULTI GLASS

- Super light weight putty with glass fibres
- Characterized by creamy consistency, which allows to easily work in 2 - 4 mm layers and to grind with high granulation abrasives
- Possibility of using higher granulation abrasives (coarse cut P120 - P150)
- This putty is designed particularly for large repairs of heavily damaged surfaces

Can be applied on: steel, aluminium, galvanized and polyester-glass surfaces.

Art.	Volume	Package
200611	1l + hardener	1/10 pcs.



SPRAY FILLER

- Special putty that can be used as filler
- Application by pneumatic spray gun
- Can obtain a perfectly smooth surface, even over large areas
- Curing time is about 2 hours (reduced in proportion to an increase in temperature, but not above 60 °C)
- Has very high insulation properties
- Protects against the harmful effects of overdose, or use a small amount of hardener in polyester putty, applied with a spatula
- Can be applied to epoxy primer after 4 hours
- Is used for both mechanical and manual sanding by fine abrasive

Can be applied on polyester plastic, PE putties, metal, aluminium.

Art.	Volume	Package
200700	0.8 L + hardener	1/6 pcs.



REPAIR KIT

- Two-component polyester repair set for small repairs of holes or splits in metal or laminate materials such as rusted places on car bodies, boats or camping caravans
- Glass texture soaked with polyester resin forms compact base for application of next layers of putties during the repair

Can be applied on: metal, steel, aluminum, old lacquer coatings, two-component acryl fillers.

Art.	Volume	Package
200800	250 g resin can + 5 g PE-initiator tube + 0.25 m ² fiberglass	1/20 pcs.

RECOMMENDATIONS:

	Clean & sand surface	Degrease	Mixing ratio/ Potlife	Apply	Drying time at 20°C	Sanding	Safety measures
EASYLIGHT PLUS	+	+	3-4/100	5-8 min/20°C	25-35 min/20°C		
ALU	+	+	2-3/100	4-6 min/20°C	20-30 min/20°C	1. P80-P120 2. P150-P240	Use protective equipment
SOFT	+	+	2-3/100	4-6 min/20°C	20-30 min/20°C		
GREEN GLASS	+	+	2-3/100	4-6 min/20°C	25-35 min/20°C		
PLASTIC FLEX	+	+	2-3/100	5-8 min/20°C	30-45 min/20°C	P180-P320	
UNI	+	+	2-3/100	4-6 min/20°C	20-30 min/20°C	1. P80-P120 2. P150-P240	
UNI+	+	+	2-3/100	3-5 min/20°C	20-30 min/20°C	P150-P320	
MULTI SOFT	+	+	2-3/100	3-5 min/20°C	20-30 min/20°C		
MULTI GLASS	+	+	2-3/100	3-5 min/20°C	25-30 min/20°C	P120-P320	

	Clean & sand surface	Degrease	Mixing ratio/ Potlife	Apply	Drying time	Sanding	Safety measures
SPRAY FILLER	+	+	2-3/100 20-30 min/ 20 °C	1-3X. 3-4 bar 2.2-3.0 mm	1.5-2 h/20 °C 30 min/60 °C	1. P150-P180 2. P240-P320	Use protective equipment
REPAIR KIT	+	+					

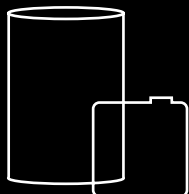
EASY LIGHT PLUS, ALU, SOFT, GREEN GLASS, PLASTIC FLEX, UNI, UNI+, MULTI SOFT, MULTI GLASS:
VOC limits: VOC II / B / b limit = 250 g/l VOC = 90 g/l
Readiness of the mixture in compliance with Directive 2004/42/CE

RADEX SPRAY FILLER:
VOC limits: VOC II / B / b limit = 250 g/l. VOC = 150 g/l

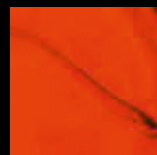
REPAIR KIT:
EU/2004/42 Cat.II B(b) VOC 540 g/l VOC max<540 g/l

PRIMERS

The background of the page is a high-contrast, abstract composition. It features several thick, curved, diagonal lines in a vibrant red color that sweep across a deep black field. The lines have a slight gradient and a glossy, reflective quality. In the lower-middle section, a small, dark, metallic object with two circular, ring-like features is visible, partially obscured by the red curves. The overall aesthetic is modern and architectural.



Optimal range of RADEX primers and fillers offers convenience of application, excellent adhesion and excellent filling properties.





EVO PRIMER 4:1 HS

RADEX EVO PRIMER 4:1 HS is a two-component high solid (HS) polyester primer that provides high build over existing coatings and properly prepared steel and aluminum substrates. Use with RADEX hardener VP30 (standard) or RADEX hardener VP10 (fast).

Description: product is used as standard filler. This primer has excellent filling, drying and sanding properties important in today's custom and restoration market. When applying, product forms a «film» layer whose thickness is more than 10 microns. Available in three colors: white, grey and black.

	Art.	Properties	Volume	Package
Primer EVO 4:1 HS	800000	white	3.5 L	1/4 pcs.
	800001	grey		
	800002	black		
Hardener VP 30	800010	grey	0.8 L	1/6 pcs.
Hardener VP 30	800130	standard	2.5 L	1/4 pcs.
Hardener VP 10	800110	fast	2.5 L	1/4 pcs.



NON - STOP ADDITIVE

EVO primer additive - special activator for extra fast drying and wet on wet priming. In combination RADEX EVO primer with NON-STOP additive allows a very quick processing followed by heat-drying or drying at room temperature. This offers saving potentials in terms of spray booth occupancy, stoving times as well as working time. It is also suitable to fill partial areas (Spot repair) without sinkage or visible marks in the outer rim.

Art.	Volume	Package
840060	1 L	1/6 pcs.



EP EPOXY PRIMER

Provides exceptional corrosion protection and is especially geared to sensitive factory primers and any other 2-coat finishes. This primer can be used as adhesion promoter, wet-on-wet primer filler with corrosion protection or sanding primer filler under all topcoats. Use with RADEX EP hardener.

Description: as a consequence of the good adhesion and flexibility, the product is particularly suited for repairing aluminum and fiberglass surfaces, as well as powder coatings. EP Primer has strong anti-corrosion properties, excellent adhesion on all surfaces, corrosion, humidity, chemical and mechanical resistance.

	Art.	Volume	Package
Primer EP	800003	1 L	1/6 pcs.
Hardener EP	800100	0.5 L	



CR+ WASHPRIMER

CR+ Washprimer is an anti-corrosion wash primer based on polyvinyl resins. The product ensures excellent adhesion to various substrates and very high anti-corrosion resistance, also on damaged coating (scratches and chips of the paint coating). Intended for application in thin layers in combination with any acrylic filler.

Function: CR + Wash primer is perfectly suited for the adhesion on substrates such as steel, aluminum and galvanized surfaces.

Product offers a 100% corrosion protection on the substrates. The wash primer is also ideal for isolating putty spots before the filler application.

	Art.	Volume	Package
Primer CR+	800012	1 L	1/6 pcs.
Activator CR+	800051	0.5 L	



RUST STOP PROFESSIONAL CONVERTER & PRIMER

RUST STOP water-based converter and primer - polymer system that converts corrosion products, stops the corrosion process and establishes a durable matt-black coating.

Function: RUST STOP is used on rusty metal surface, metal constructions and automobile parts processing.

Important: before use clean the surface of dirt, grease and rust. Carefully shake the bottle. With a brush or roller, apply to area to be treated. After a short time the surface will begin to become black. This is indicative of the onset of the rust conversion process. After three hours (+ 20 °C) the corrosion process will be completely finished. Subsequently, RADEX RUST STOP coating surface can be treated with filler or any other color. After use, tools should be washed thoroughly with water. Protect from freezing.

	Art.	Volume	Package
	800006	0.05 L	1/50 pcs.
	800008	0.2 L	1/27 pcs.
	800009	1 L	1/6 pcs.



VHS PRIMER 4:1

Fast drying primer/filler. It has very good application properties - excellent levelling and filling. Primer is dedicated for different kinds of repairs and can be used like compact filler or secondary primer. Excellent sanding properties without clogging of sanding paper. VHS Primer 4:1 gives corrosion protection and very good adhesion on different kind of metal surfaces.

	Art.	Properties	Volume	Package
Primer VHS 4:1	800700	white	3.6 L	1/4 pcs.
	800720		1 L	1/12 pcs.
	800701	grey	3.6 L	1/4 pcs.
	800721		1 L	1/12 pcs.
	800702	black	3.6 L	1/4 pcs.
	800722		1 L	1/12 pcs.
Hardener VPR	800771		0.9 L	1/4 pcs.
	800727		0.25 L	1/12 pcs.

Please look for RECOMMENDATIONS of product use on next page.



1K PLASTIC PRIMER & FILLER

Fast-drying plastic primer & filler has excellent filling properties which can be applied on commonly used plastics in the automotive industry. Product can also be applied on extremely difficult plastics such as PP without additional pretreatment

Art.	Properties	Volume	Package
800004	grey	1 L	1/6 pcs.

RECOMMENDATIONS:

							
	Viscosity	Apply	Layers	Potlife	Interlayer drying	Drying time	Safety measures
EVO 4:1 HS: VP30/ VP10: AT30/AT10/ Accelerator Volume: 4:1 + 10% Weight: 160+24+8	DIN4 (20 °C) =25-30 s	1.6-1.8 mm	1-5; <300 µm	VP10 1 h/20 °C VP30 2 h/20 °C	10-15 min/ 20 °C	3-5 h/20 °C VP10 30 min/60 °C VP30 40 min/60 °C	Use protective equipment
EVO 4:1 HS: VP30/ VP10: Non-Stop Additive Volume: 4:1+20%	DIN4 (20 °C) =18-22s	1.5-1.8 mm	2-3; <100 µm	VP10 30min/20 °C VP30 50min/20 °C	5-10 min 20 °C	90min/20 °C 10min/60 °C	
EVO 3:1 HS: VP30/ VP10: Non- Stop Additive Volume: 3:1+20%	DIN4 (20 °C) =14-16s	1.3-1.4 mm	1-1.5; <40 µm	30-40 min		Overpaint 10 min/20 °C	
EP Primer:EP Hardener + AT 30 thinner Volume: 2:1+10-25%	DIN4 (20 °C) =17-23 s	1.2-1.6 mm	1-2; 25-50 µm; 10 m ² /l – 35 µm	5 h/20 °C	10-15min/ 20 °C Overpaint 30-45min	12 h/20 °C 30 min/60 °C	
Primer CR: Activator Volume: 1:1 Weight: 100:80	DIN4 (20 °C) =19-21 s	1.2-1.5mm	1-2; 10-15 µm; 12m ² /l – 10µm	2 days/20 °C	10-15 min/ 20 °C	15 min/20 °C	
1K Plastic Primer Filler Volume: 100 + 50-100% AT10/AT30	DIN4 (20 °C) =18-22s	1.3-1.5 mm	1-3; 15-40 µm	∞		Overpaint 15-20 min	
VHS Primer: VPR Hardener Volume: 4:1 Weight: 150:25	DIN 4 (20 °C) =20-30 s	1.6-1.8mm	1-3; <250 µm	1 h/20 °C	5-7 min/ 20 °C	3-5 h/20 °C 15-20 min/ 60 °C	

CLEARCOATS



RADEX top coatings as clearcoats allows to create excellent bodywork appearance, protects the surface from mechanical, atmospheric, chemical and other influences.

General characteristics of RADEX clearcoats are: fast drying, high elasticity and brilliant gloss.



2K CLEARCOAT HS

RADEX 2K Clearcoat HS is an acrylic clearcoat that has a high solids content and is highly scratch resistant (SR). High hardness, UV resistance and weather resistance guarantee high durability, while the gloss and depth ensure an excellent appearance of the coated surface. The recommended coating thickness is obtained by applying one and a half layers. The good flowability and quick drying time assure easy repair and short time of processing in the painting booth. It is available in versions with the standard or fast hardener. The selection of specific hardener depends on the application conditions.

Function: due to its properties, RADEX 2K Clearcoat HS is a clearcoat that enables easy reproduction of the factory paint coating structure. It has good dry spray absorption, which makes it perfect for coating large surfaces. Recommended to use in combination with RADEX standard hardener VC30 or fast hardener VC10 in proportion 2:1.

	Art.	Properties	Volume	Package
2K HS clearcoat	810001	standard	5 L	1/4 pcs.
	810003		1 L	1/6 pcs.
Hardener VC 30	810240		0.5 L	1/6 pcs.
	810130		2.5 L	1/4 pcs.
Hardener VC 10	810110	fast	0.5 L	1/6 pcs.
	810210		2.5 L	1/4 pcs.
2K HS ECO clearcoat	810004	standard	1 L	1/6 pcs.
Hardener VC30 ECO	810170		0.5 L	1/6 pcs.



2K EXPRESS CLEARCOAT

RADEX 2K Express Clearcoat is an acrylic clearcoat that is highly scratch resistant (SR). The product has a very short drying time. It is recommended for fast repairs. The product reaches operating hardness in just 20 min at 60 °C or after 8 h at 20 °C. Does not lose gloss over time. It is UV and weather resistant.

Function: a fast clearcoat which speeds up your working processes with a fast drying time. It has a mixture ratio of 2:1 and is applied without any addition of thinners. The clearcoat is easy to handle, has a deep gloss and a drying time of only 15 minutes at 60 °C.

	Art.	Volume	Package
2K Express Clearcoat	810002	1 L	1/6 pcs.
Hardener VR 5	810105	0.5 L	



2K VHS CLEARCOAT

Very fast curing 2-part acrylic clear coat characterized by rapid early hardness. It is ready for polishing after only 15 minutes of forced drying at 60 °C and cooling down. Very good flow and levelling properties. High gloss and final hardness. Outstanding durability due to chemical, UV and weather resistance. Well balanced pot life enables safe application. Designed for use on solvent and water-based base coats. Very high solids and VOC product. Due to its properties, Radex VHS Clearcoat is a clearcoat that enables easy reproduction of the factory paint coating structure.

	Art.	Volume	Package
2K VHS clearcoat	881101	5 L	1/4 pcs.
VHR15 clearcoat hardener	881201	2.5 L	



RADEX 2K HS+ CLEARCOAT

New generation top quality high solid anti-scratch clear coat. Due to ultra-fast drying technology and outstanding initial hardness, it saves repair time and energy. Easy application ensures a good-looking and high-gloss coating. Can be applied over solvent- and waterborne base coats.

Excellent result can be achieved in spray booths with forced drying just in 15min/60°C and as well without it at 2-2,5h/20°C.

	Art.	Volume	Package
2K HS+ clearcoat	883301	5 L	1/4 pcs.
2K HS+ clearcoat hardener	883311	2.5 L	
2K HS+ clearcoat thinner	883399	1 L	



ACRYL THINNERS

Thinners are recommended for using with RADEX EVO Primer 4:1 HS, RADEX EP Epoxy Primer, RADEX 2K Clearcoat HS and 2K Express Clearcoat, 1K plastic primer&filler, 2K RS 1.1 fast drying clearcoat.

	Art.	Properties	Volume	Package
AT30	820135	standard	5 L	1/4 pcs.
AT30	820130		0.5 L	1/6 pcs.
AT10	820110	fast	0.5 L	
UNI	820000	universal	5 L	1/4 pcs.



THINNER FOR METALLICS

Universal thinner for solvent basecoat metallics. Fits to all solvent basecoat painting systems.

Art.	Volume	Package
820105	5 L	1/4 pcs.



SPRAY GUN CLEANER NITRO THINNER

High quality solvent based cleaner – thinner for spray guns and other painting equipment.

Art.	Volume	Package
820111	25 L	1 pcs.



DEGREASERS

Degreaser is a solvent cleaner for use on surfaces which will be refinished. The cleaner is particularly suitable for the first cleaning step to remove tar, grease and silicones from vehicles which will be refinished. The product can also be used for the initial cleaning of composite plastics.

	Art.	Properties	Volume	Package
D30 degreaser	830031	medium	1 L	1/12 pcs.
	830030		5 L	1/4 pcs.
D10 degreaser	830010	fast	5 L	1/4 pcs.



ACCELERATOR

Special additive improving drying time of fillers and clear coats. For the clear coat it can be used only with slow and standard hardeners. The drying time will be shortened by 15%.

Art.	Volume	Package
840040	1 L	1/6 pcs.



SPOT BLENDER

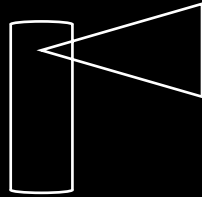
Product is designed for dissolving the overspray and fade out edge created during spot repairing or blending. It can be used with any RADEX acrylic clearcoat. It helps to eliminate optical differences between new and earlier applied clear coat. Spot Blender is not for use with base coats.

Art.	Volume	Package
840050	1 L	1/6 pcs.

RECOMMENDATIONS:

Mixing proportions	Viscosity	Apply	Layers	Potlife	Interlayer drying	Drying time	Safety measures
2K Clearcoat HS:VC30/ VC10/ AT30/ AT10/ Accelerator Volume: 2:1+10% Weight: 100:50:9	DIN4 (20 °C) =15-17 s	Conventional gravity fed spray gun: 1.3-1.4 mm; 3-4 bar; 15-20 cm Low-pressure gravity fed HVLP spray gun: 1.2-1.3 mm, 2 bar; 10-15 cm	1.5; 20-40µm; 8m²/l – 60µm 2; 30-30µm; 8m²/l – 60µm	VC10: 30 min/ 20 °C VC30: 2 h/ 20 °C	5-10 min/ 20 °C	14 h/20 °C VC10: 30 min/60 °C VC30: 45 min/60 °C	
2K Clearcoat Express:VR5/ AT10/Accelerator Volume: 2:1+ (15-20%) Weight: 100:49:18	DIN4 (20 °C) = 17-18 s	Conventional gravity fed spray gun: 1.3-1.4 mm; 3-4 bar; 15-20 cm Low-pressure gravity fed HVLP spray gun: 1.2-1.3 mm, 2 bar; 10-15 cm	2; 25-25µm; 7.3 m²/l – 50µm	30 min/ 20 °C	3-5 min/ 20 °C	8 h/20 °C 20 min/60 °C	Use protective equipment
2K VHS Clearcoat: VHR15 clearcoat hardener Volume 2:1 Weight 100:50	DIN4 (20 °C) = 16-18 s	1.3 mm	1.5; 1/2 thin closed coat + 1 full wet coat 50-60µm; 10-12 m²/l	50 min	5-7 min	3.5 - 4h/ 20 °C 15min/ 60 °C	
2K HS+ clearcoat: 2K HS+ clearcoat hardener/thinner Volume: 2:1+10% Weight: 100:51	DIN 4 (20 °C) = 15-17 s	1.3 mm	2; 50-60 µm; 8.5-10.5 m²/l	up to 100 min	4-6 min	Dust free drying 20 min./20 °C; Dry to touch 45 min./20 °C; Full hardness 2 h/20 °C Dry to polish 2 h/20 °C; Dry to polish 15 min./60 °C	

AEROSOLS



RADEX SPRAY-IT is a range not only for the do-it-yourself enthusiasts in the automotive field but also for professional users. We fill only aerosols with PRO level paint products. Excellent application, fast drying and perfect adhesion to any kind of surface.





SPRAY-IT PAINT

High-quality SPRAY-IT paint has a wide range of applications for the automotive repair and other fields, excellent hiding power, strength and durability of the coating.

Art.	Color	Volume	Package
400501	black matt	500 ml	1/6 pcs.
400502	black gloss		
400503	white gloss		
400505	silver		



SPRAY-IT CLEARCOAT

SPRAY-IT clearcoat has a great gloss, durability and increased resistance to the effects of weather and mechanical stress.

Art.	Volume	Package
400504	500 ml	1/6 gab.





SPRAY-IT PRIMER

SPRAY-IT Primer fills small pores and grinding traces on the surface. It has good fillability and fast drying. It creates a layer suitable for coating all types of paints.

Art.	Color	Volume	Package
400506	grey	500 ml	1/6 gab.
400507	black		
400508	white		



EPOXY PRIMER

Primer for universal use, in particular for repairing small damaged areas through to spot repairs. Best possible adhesion on all metals. Contains epoxy binding agent, excellent corrosion protection. Insulating effect against moisture. Can also be used on various plastics and glass fibre-reinforced synthetic materials. Very fast drying, can be sanded immediately.

Art.	Color	Volume	Package
400771	light grey	500 ml	1/6 pcs.
400773	black		



PRIMER FOR PLASTIC

Spray-it plastic primer is a good adhesive for painting hard plastics, has good adhesion and coverage properties, and can be painted over with most car paints, incl. water-based paints.

Art.	Volume	Package
400509M	400 ml	1/12 pcs.



SPRAY-IT AEROSOL PRE-FILLED

One- component semi finished product with propellant and special additives. RADEX Prefill can be filled with solvent- based varnish (400ml can + 100ml varnish). It allows to match the color to standard shades without using a spray gun. Very easy application, non- irritating smell.

Art.	Volume	Package
400500	400 ml	1/12 pcs.

AEROSOL FILLING MACHINE

Pneumatic machine for quick filling of 400 ml aerosol cans with automotive or industrial paints. The high efficiency allows you to fill approximately 300 spray cans per day. Suitable for filling 1K and 2K semi-finished products, as well as for filling sprays with water-based and solvent-based varnishes. It does not require a power supply, just compressed air.

Art.	Package
302400	
302441	piston and cylinder set (standart)
302442	piston and cylinder set (Clean-Jet)

1 pc.



STAR

INSPIRED BY RADEX



STAR works with the latest and most advanced (CNC) technology in all production lines. The production process is carried out to the highest world standards and the products are well known for their high quality of work, as well as for their affordability.





SPRAY GUNS

High quality spray guns for professional automotive, wood / furniture and industrial use. STAR nozzles and needles are made of 100% high quality stainless steel. The STAR brand of spray guns are manufactured under the strictest standards and are well known for their high quality workmanship. With this also comes a reputation of affordability- with Star spray guns known to outperform other spray guns with over twice their price tag.

Model	STD size	Air inlet pressure	Air consumption	Pattern width
SMV-4F-G	1.4, 1.6, 1.8, 2.0, 2.5, 3.0	29 (2.0 BAR)	10.5-12.5	290-340
EVO-T-4F-G	1.2, 1.3, 1.4, 1.5, 1.6, 1.8, 2.0	19-22 (1.3-1.5 BAR)	10.0-12.0	240-280
EVO-T-106TF	0.5, 0.8, 1.0, 1.2	15-19 (1.0-1.3 BAR)	3.0-4.5	100-150
XPS	1.0, 1.2, 1.3, 1.4	29 (2.0 BAR)	10.0	320
XPSV	1.0, 1.2, 1.3, 1.4	29 (2.0 BAR)	14.5	300



FILTERS

Air Filtration System L906 Series. Ideal to be installed at the end of pipeline or near spray booth. Removes threats from air line, unleashing full potential of equipment.

Art.		Air filters	Condensate removal
L906	Single stage	5 µm	Manual
L906-A	Single stage	5 µm	Automatic
L906-2W	Single stage	5 µm	Automatic / Manual
L9062-2W	2 - stage	5 µm / 1 µm	Automatic / Manual
L9063MB-A	3 - stage	5 µm / 0.1 µm / A.C.	Automatic

ACCESSORIES



Art.	Product	Size	Properties
PG 060	Gravity cup	0.6 L	Female thread
PG SMV / SLV	Gravity cup	0.6 L	Male thread



S-081C	Analogue manometer
S-081CD	Digital manometer



PUF 906-07-01	Filter element	For L9062MB / L9063MB water and oil separator (0.1 µm)	
---------------	----------------	--	--



S-091A	Paint filter	For 0,6 L gravity cup	
S-092	Viscosimeter	DIN; FORD 4	
S-093	Spray gun holder	Metal	



SF25FT-2	Flexible hybrid polymer air duct	1/4" air duct 7.5m	Male thread ø 6,4 mm
SF25FT-3	Flexible hybrid polymer air duct	3/8" air duct 7.5m	Male thread ø 9.5 mm
SF50FT-3	Flexible hybrid polymer air duct	3/8" air duct 15m	1/4" Male thread ø 5 mm



E20SFP	Air Quick Connect	1/4" Female thread	
E20SHP	Air Quick Connect	6-8 mm (1/4" air duct)	
E20SMP	Air Quick Connect	1/4" Female thread	
E30SHP	Air Quick Connect	9-11 mm (3/8" air duct)	



KIT 4F	Repair kit	Gaskets and springs	
KIT XPS	Repair kit	Gaskets and springs	
KIT 106F	Repair kit	Gaskets and springs	

RADEX-EUROPE Ltd
"Lielcirsi", Vetras, Marupe district,
LV-2167, Latvia
Phone +371 67969531
Mobile +371 20271111
www.radex-auto.com