



**TOTALKARE**  
WORKSHOP EQUIPMENT EXPERTS

TRAINING COURSES **004**

SERVICE & INSPECTION **005**

MOBILE COLUMN LIFTS **006**

VEHICLE WASHING **008**

FIXED POST VEHICLE LIFTS **010**

LIGHT COMMERCIAL LIFTS **014**

BRAKE TESTERS **015**

EMISSIONS TESTERS **019**

INSPECTION EQUIPMENT **020**

HEADLAMP TESTERS **021**

ATF LANE EQUIPMENT **022**

CLASS 7 MOT BAY **024**

WORKSHOP FITOUT **026**

WHEEL ALIGNMENT **028**

WHEEL SERVICING **029**

DIAGNOSTICS **032**

COMPRESSORS **033**

MANUAL HANDLING **035**

SCISSOR TABLES **036**

ANCILLARY EQUIPMENT **037**

WORKSHOP / INDUCTION HEATING **049**

TORQUE TOOLS **050**

AIR CONDITIONING **051**

OIL/FLUID MANAGEMENT **052**

AGRICULTURE **054**

LIFTING MODULAR BUILDINGS **054**

RAIL DEPOT EQUIPMENT **055**

ERGONOMIC POSITIONERS **057**

**REQUEST  
A QUOTE**





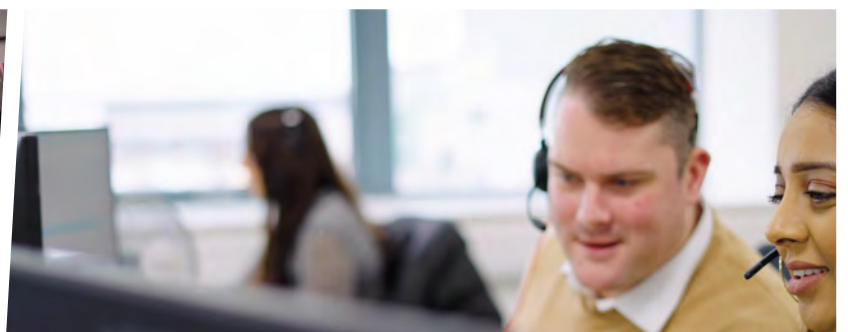
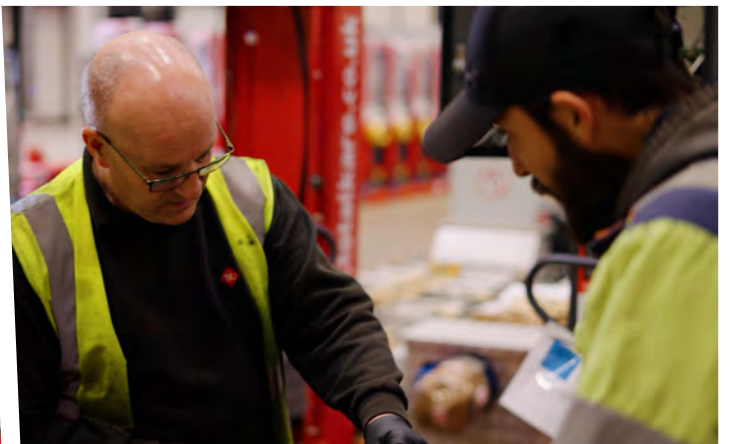
# WHO ARE WE?

Totalkare is the UK's leading provider of commercial vehicle workshop equipment, with customers ranging from small family-run businesses through to multi-national transport operators and logistics companies.

Our history dates back to 1953 when Walter Somers Materials Handling established a manufacturing assembly centre in Halesowen in the West Midlands, offering fabrication services to industry. It was some years later, however, when Totalkare introduced its first mobile column lift in the UK, that the company embarked on a journey which saw the Company celebrate 40 years as the UK's market leader for mobile column lifts in 2020.

In recent years our product portfolio has expanded significantly to incorporate numerous fixed and mobile vehicle lifting options alongside a variety of testing and diagnostic equipment, with customers increasingly looking to Totalkare for workshop fit outs.

While the name may have changed along the way, the same high quality products and aftersales service remains, giving users of our equipment the peace of mind that assistance is always at hand if required.





# WHERE WE OPERATE

Totalkare operates primarily in the UK and Ireland, servicing a number of core business sectors including commercial transport, waste and recycling, bus and coach, the emergency services, heavy haulage and recovery, light commercial transport, local authorities and rail.

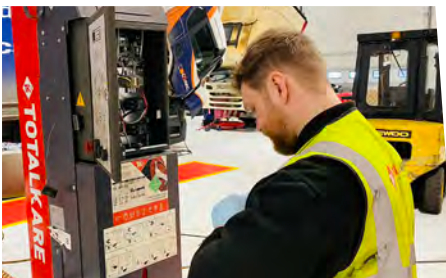
In addition, we support niche industries with bespoke vehicle lifting applications, including the lifting of ground support vehicles in airports, lifting modular homes for loading onto flatbed transport vehicles, boat building and more.

Totalkare's reputation is built on the quality of our products and the service we provide, both of which are underpinned by the quality of our people. We recognise, however, that a business is nothing without its customers, so each of us works hard to personify our company values which reflect how we want our customers to feel when dealing with Totalkare.

We also understand the impact Totalkare's operations have on our local community and the environment, and are committed to limiting this as much as possible, with sustainability processes such as audited paper recycling collections and road-based staff in electric vehicles being just two examples.

The company supports local charities through a variety of fundraising activities and staff engagement in social activities organised by our Ministry of Fun team are always well attended.

It is these things that have directly contributed to Totalkare being ranked by Best Companies as an "outstanding" company to work for in 2023, while also being scored the 12th best small company to work for and the second-best manufacturing employer in the UK.



## TRAINING COURSES

### MOBILE COLUMN LIFT ONLINE TRAINING



A busy workshop can be a dangerous place if equipment is not operated safely in accordance with manufacturer instructions.

While Totalkare builds a number of failsafe measures into its mobile column lifts and ancillary products as standard, it is vital operatives are properly trained to mitigate the risk of personal injury to themselves or others working nearby. Leading the way in workshop safety, Totalkare has created the gold standard in mobile column lift training.



### F-GAS CERTIFICATION

We are pleased to be able to offer you in association with the IMI, a cost effective and convenient solution to meet the legal, mandatory requirement.

Our refrigerant handling assessment has the flexibility to be carried out at your premises, using your facilities and equipment.

Advantages are:

- Minimal staff down time
- No travel or accommodation costs
- Minimum disruption
- Minimal workload interference
- Delivery of assessment arranged to suit you

The assessment lasts approximately 60-90 minutes per candidate.

The cost of the Assessment includes:

- An assessor to visit site
- Course learning material
- IMI Registration fees
- IMI Certification fees
- IMI Electronic certificate
- IMI Paper certificate





## SERVICE & INSPECTION

The purchase of your heavy duty lifting and testing equipment is just the first stage in the journey of becoming a Totalkare customer. With national breakdown and servicing coverage, we are best equipped for all your maintenance requirements throughout the lifespan of your equipment and beyond. We also provide expert advice which is available on the phone 24 hours a day.

Totalkare can offer different service contract options for:

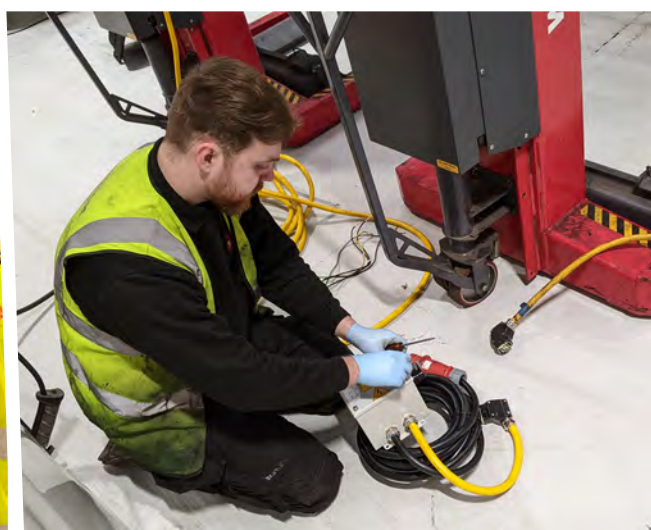
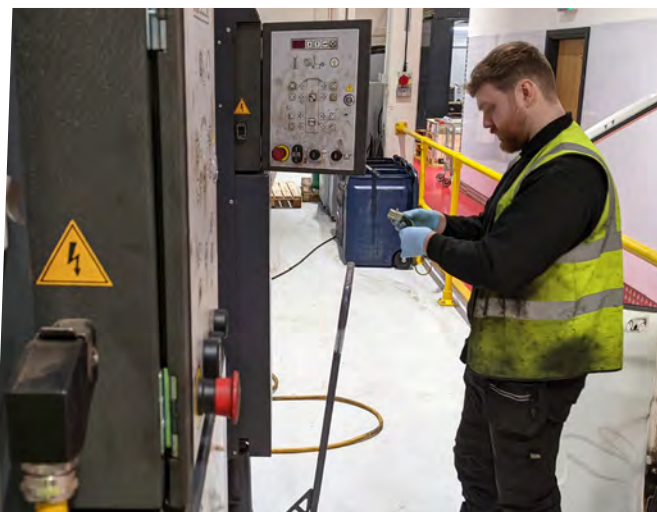
Mobile column lifts

Fixed post lifts

Brake testers

Smoke meters

And other Ancillary products



## REPORTS OF THOROUGH EXAMINATION

Reports of Thorough Examination are additional to the planned maintenance required by PUWER and should be seen as a complete set of requirements for your heavy duty mobile column lifts in the workshop. To ensure you are fully covered for both PUWER and LOLER regulations, a Report of Thorough Examination can be added to any of our Aftercare packages for lifts.

## FINANCE OPTIONS



LEASE HIRE



LEASE PURCHASE



ZERO DEPOSIT



SHORT TERM HIRE



OUTRIGHT PURCHASE



## MOBILE COLUMN LIFTS

The T8DC cable-free mobile column lift is a versatile lifting solution, with each column capable of lifting up to 7,500kg.

### T8DC: CABLE-FREE MOBILE COLUMN LIFT

Inverted hydraulic cylinder lifting system

7,500kg lifting capacity per column

No interconnecting cables - avoiding health and safety issues with slips, trips and falls

Radio synchronisation and communication between columns

Available in four, six or eight column configuration

Only requires a single phase 230v power supply for charging

Large number of lifting cycles between charges

Adjustable wheel forks for different wheel sizes; 700mm - 1,400mm diameter





## MOBILE COLUMN LIFTS

The T8AC cabled mobile column lift is easily wheeled into the desired position, providing flexibility of lifting positions and manoeuvrability around the workshop.

### T8AC: CABLED MOBILE COLUMN LIFT

Inverted hydraulic cylinder lifting system

7,500kg lifting capacity per column

Available in four, six or eight column configuration

Control lifting operations from any column

Adjustable wheel forks for different wheel sizes; 700mm – 1,400mm diameter

Quick and easy interconnections of cables



## VEHICLE WASHING



A flexible, cost effective solution for outdoor applications where a permanent lifting location is not required, the G8AC washbay mobile column lift is a truly versatile solution for heavy duty commercial workshops

### G8AC: WASHBAY MOBILE COLUMN LIFT

Electromechanical lifting system

7,500kg lifting capacity per column

Sealed bearings & galvanised to give long term protection from water ingress

Available in four, six or eight column configuration

Adjustable wheel fork dimension 900-1,200mm

Hand operated jack unit on each column

Optional pendant hand control

Quick and easy interconnections of cables

Independent locking safety device



### RELATED PRODUCTS

#### AXLE STANDS

7,500kg capacity

Tall and short versions available



#### TRANSMISSION JACK

1,000kg or 2,000kg load capacity versions

Manual, air, and pit versions available



#### TRAILER BEAM

7,500kg capacity

900mm x 2,850mm



#### AGRICULTURAL ADAPTOR

Double load protection ensured safety

Intuitive operation



#### INFILL PLATES

Rubber top

5,000kg capacity





## VEHICLE WASHING

Compared to washing by hand, the Speedy Wash provides immediate savings in time and money by performing fast and economical washing with a 75% saving in labour, water and chemicals. One person can soap, wash and rinse a 16m trailer, a full size coach, or a transit bus in an average of seven minutes.

### SPEEDY WASH - A225 CH

Perfect machine for tough 24/7 outdoor operation

Available with manual start gasoline or diesel engines

All frames are made from high quality stainless steel, and are tested to guarantee durability

Provides a smooth, feather touch steering with total control of the machine in both directions

### SPEEDY WASH - 626 BATTERY

The lithium battery set guarantees non-stop working cycles, thanks to the quick recharge during the inevitable stops to refill the water tank

The EZ Drive 4WS (Easy Drive four wheels steering) 626 makes washing a vehicle easier and faster than ever

Provides a smooth, feather touch steering with total control of the machine in both directions





## FIXED POST VEHICLE LIFTS



With the primary use of a vehicle lift being to work underneath and around the vehicle, an in-ground lift provides more clearance to a technician wanting to get to all parts of the vehicle, with limited obstruction.

### IN-GROUND LIFT

15,000kg lifting capacity columns

Up to eight columns configuration

7,000kg capacity roller cover

Wireless remote control for easy positioning of lifting points

Square lifting columns with two independent hydraulic circuits

Level with workshop floor

Pre-tested and fully assembled before delivery

Range of accessories and adaptors for different types of vehicles





## FIXED POST VEHICLE LIFTS

The Y-MECH Lift is the ideal solution where a fixed position for lifting operations is needed and the flexibility of mobile vehicle lifts is not required. The lift can come in different capacities and platform lengths to suit your workshop requirements.



### Y-MECH

Lifting capacities of 25,000kg – 35,000kg

Range of platform lengths from 6m – 14.5m

Can be surface mounted or recessed into the floor for a flush fit

Floor supports are hot-dip galvanised and thus optimally protected against corrosion

Rails are lifted vertically, thus allowing access all around the lift

Optional galvanisation for washbay/outside applications

Drive on and off drive through options available

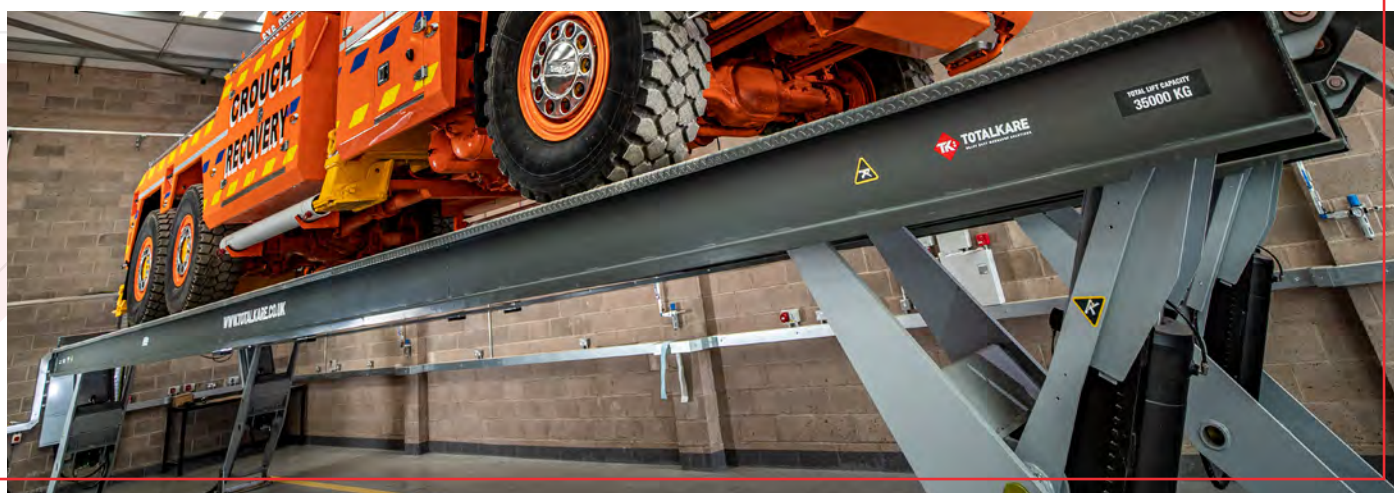


### RELATED PRODUCTS

#### JACKING BEAM

Air operated twin ram jacking beam

Available in 6,000 – 20,000kg capacity





## FIXED POST VEHICLE LIFTS

The heavy duty Four Post lift from Totalkare is the ideal solution where a fixed position for lifting operations is needed and the flexibility of mobile vehicle lifts is not required.



### HEAVY DUTY FOUR POST LIFT

A range of capacities available from 8,000kg – 35,000kg

A range of platform lengths 7 – 18m

Optional galvanisation for wash bay/outside applications

Can be surface mounted or recessed into the floor for a flush fit

Electromechanical lifting system

Electronic self alignment system

Drive through width of 3,300mm with 700mm wide platforms

Low profile platform system from 206mm – 250mm

Low floor option ramp

Drive on and off drive through options available

### RELATED PRODUCTS

#### JACKING BEAM

Air operated twin ram jacking beam

Available in 6,000 – 20,000kg capacity



#### LIGHTING

Factory fitted lighting kit

Extremely durable suitable for a workshop environment





## FIXED POST VEHICLE LIFTS

The Light Commercial Four Post Lift from Totalkare is an ideal solution when a fixed position for lifting light commercial vehicles is required.



### LIGHT COMMERCIAL FOUR POST LIFT

Lifting capacity from 4,000kg-8,000kg

A range of platform lengths from 4.7-6m

Can be surface mounted or recessed into the floor for a flush fit

Jacking beam options available

Lighting options available

Site surveys upon request



### RELATED PRODUCTS

#### JACKING BEAM

Air or manually operated twin ram jacking beam

Available in 2,000kg, 2,600kg, 3,200kg and 4,000kg capacities



#### PLAY DETECTORS

Combined lateral and rotational vehicle wheel shift from a single compact hydraulic power unit

Fast one-man inspection of wheel bearing wear and steering linkage components

Auto repair function in all lateral and rotational modes

Fast one-man inspection of wheel bearing wear and steering linkage components



## LIGHT COMMERCIAL VEHICLE LIFTS



The hydraulic two post lift from Totalkare is the perfect fixed lift solution for light commercial vehicles, and is ideal for long wheel base vans.

### TWO POST

A range of capacities available: 4,500kg - 8,000kg

Electrohydraulic design

Non load bearing cables ensure even lifting and lowering

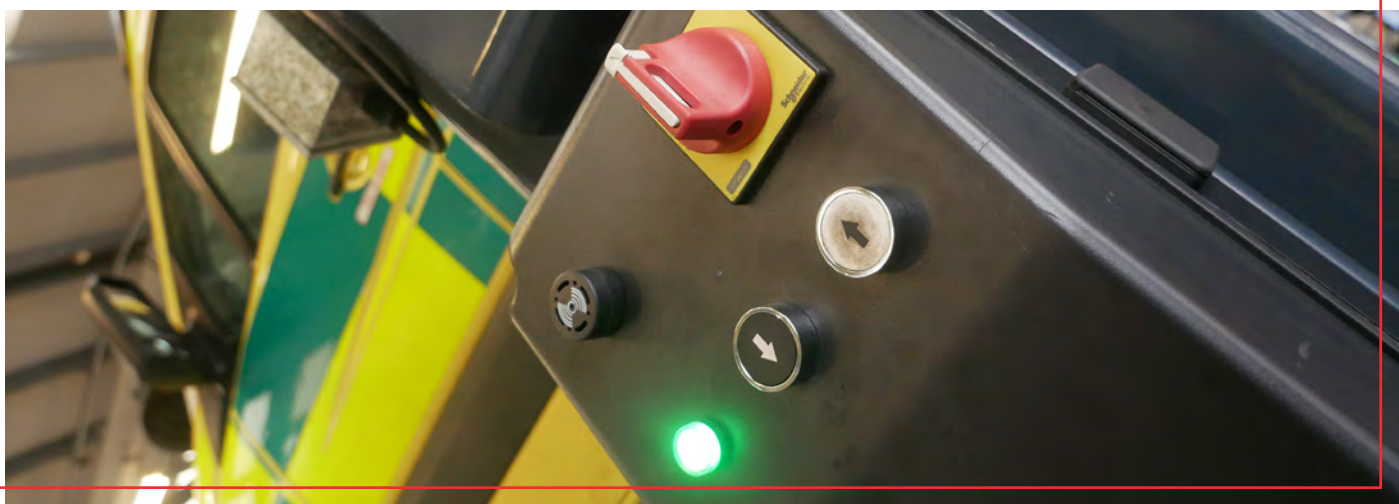
Each column equipped with its own control unit

Adjustable width and/or height on initial set up

Baseless frame free design

Lifting speed from 30-60 seconds depending on model

A range of optional extras for specific lifting of Sprinter/Crafter vans are also available





## BRAKE TESTERS

### IN-GROUND BRAKE TESTER

DVSA-approved

Maximum axle load between 6,000kg - 20,000kg depending on model

Can be installed across a pit or as part of an ATF lane

Roller area cover plate design angled to minimise risk of tyre damage

Tablet interface allows user to control and monitor test results directly on handheld unit

Easy-to-use diagnostics software provides advanced data collection, storage and presentation of results

Highest quality galvanised steel

Suitable for retrofit upgrade if required

Connected equipment ready

Our DVSA-approved in-ground brake tester is strong, durable and suitable for testing all vehicles up to a maximum axle load of 20,000kg.



### RELATED PRODUCTS

#### AXLE LOAD SIMULATION

Unique hydraulic load simulation system

255mm lifting height

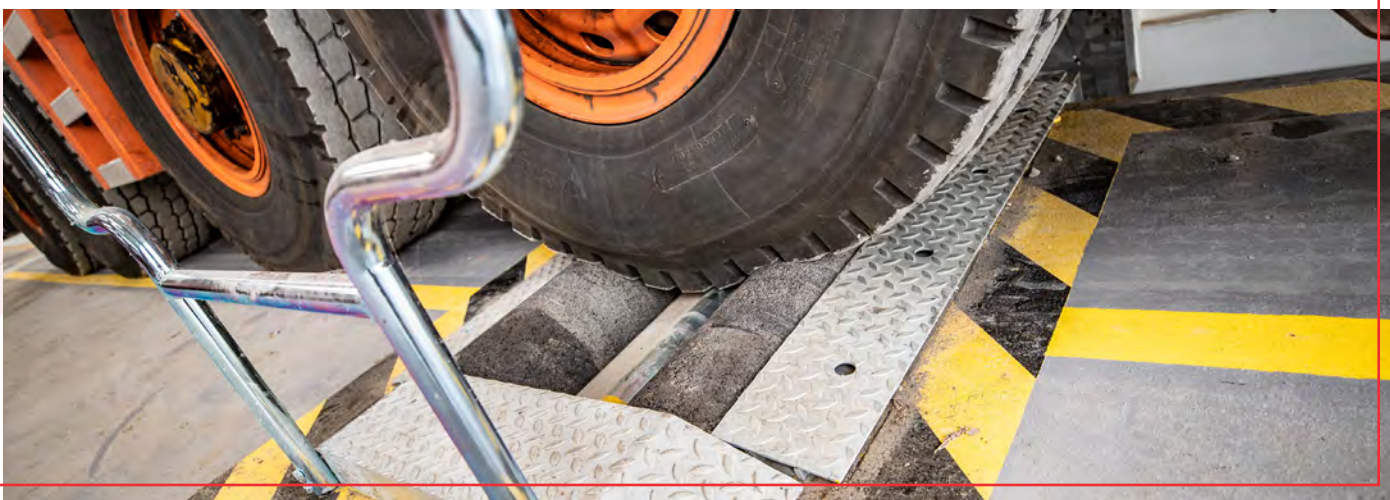
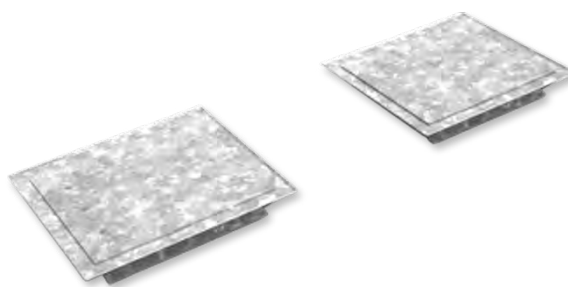
16,000kg lifting capacity



#### SHAKER PLATES

20,000kg maximum axle load

Plate speed: 36 mm/s



## BRAKE TESTERS

### MOBILE BRAKE TESTER

DVSA-approved

Tablet interface allows user to control and monitor test results directly on handheld unit

Diagnostic print out

Automatic axle weighing and vehicle total weight

Test vehicles with a high variation of wheel bases up to 4,000mm

Single or bi-directional rollers

Optional Tachograph calibration (11kW gear motors 2.0km/h)

Optional axle load simulation

Connected equipment ready

Version suitable for agricultural trailers also available

Our DVSA-approved mobile brake tester is strong, durable and suitable for testing all vehicles up to an axle load of 16,000kg as standard – however this can be upgraded to a maximum axle load of 20,000kg.



### RELATED PRODUCTS

#### EXTENSION RAMP

Ideal for tri-axle and low floor vehicles

1.65m extension for existing drive on/off ramps



#### TACHOGRAPH CALIBRATION

Add additional functionality of tachograph calibration to existing brake testers

DVSA-approved



#### AXLE LOAD SIMULATION

Eight autocompensated cylinders

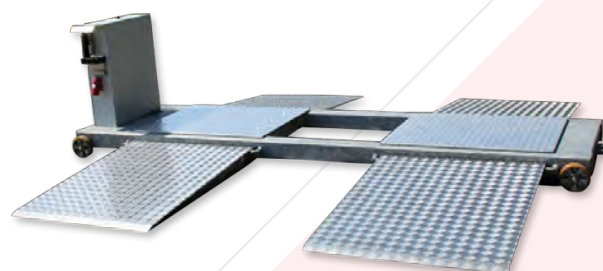
25 cm maximum elevation

Simulate a test under load – load is applied to the axle of the vehicle

#### SHAKER PLATES

20,000kg maximum axle load

Checks steering and suspension system





## BRAKE TESTERS

### CLASS 7 IN-GROUND BRAKE TESTER

Maximum axle load of 6,000kg

DVSA-approved

GEA-approved

Specifically designed for light commercial vehicles

Remote control included

Bi-directional rollers

990m roller length



Our DVSA-approved Class 7 in-ground brake tester is strong, durable and suitable for testing all vehicles up to a maximum axle load of 6,000kg.



### BM65

Manufactured in hot galvanized steel and aluminium

Incorporated commercial brake tester and play detector

1,000mm or 1,250mm rollers

Hydraulic aluminium cover with remote control

Hydraulic lift of inspection floor up to 40cm to assist with inspections

Integrated sump tank for easy management of waste and avoidance of connection to public sewer system

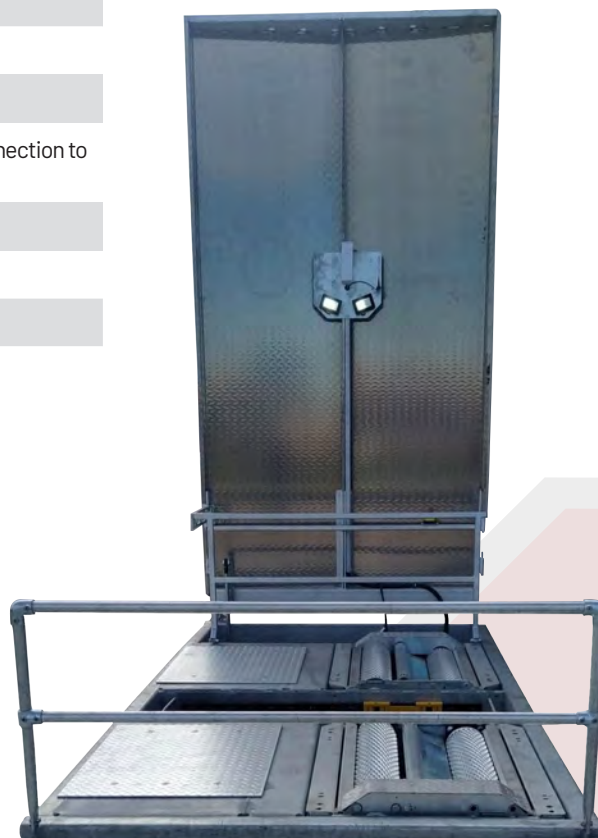
Lighting in the pit and externally if installed outside

Optional heating system

Access from either left or right hand stairs depending on installation

Installation directly on a sand-base without need for concreting

The TK-BM65 is a unique, all in one solution for workshops looking for a commercial brake tester, play detector with inspection capabilities but without the space or requirement to build a complete inspection pit in their workshop.



## MOBILE SHAKER PLATES

The mobile shaker plates can stand alone or be connected to a mobile brake tester. The movement can be controlled manually, automatically in selected directions or as a 10 cycle 'box movement' sequence. The radio linked remote control avoids expensive downtime from cable damage and allows the operator to not be restricted in their work.

### MOBILE SHAKER PLATES

20,000kg maximum axle load

Plates are moved horizontally in eight different directions by the operator

Remote control with a keypad to control each movement

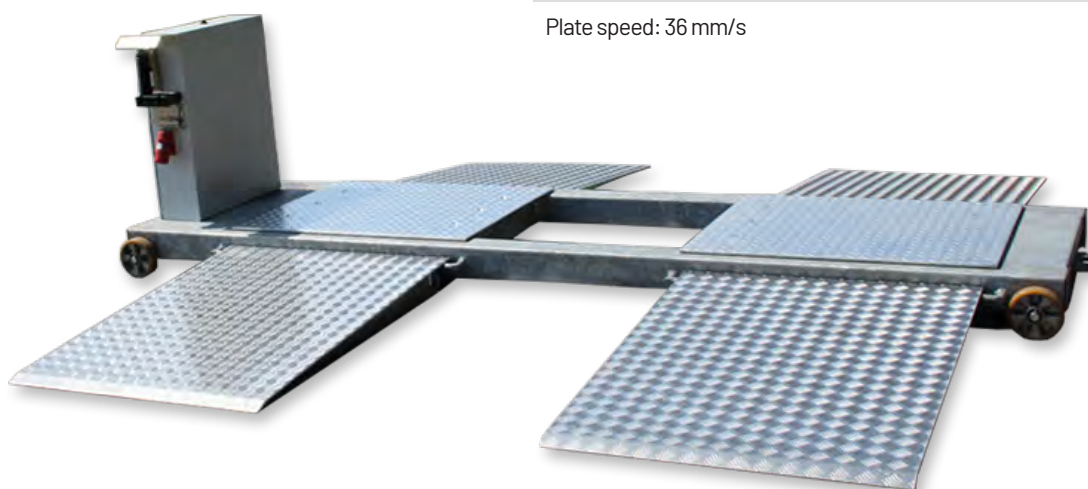
All steel is of highest quality and hot galvanised

Can easily be transported from site to site on a flatbed truck or trailer

Checks steering and suspension system

Can be supplied with an axle load system to add 8,000kg to the axle

Plate speed: 36 mm/s



### IN-GROUND SHAKER PLATES

20,000kg maximum axle load

Plates are moved horizontally in eight different directions by the operator

Remote control with a keypad to control each movement

All steel is of highest quality and hot galvanised

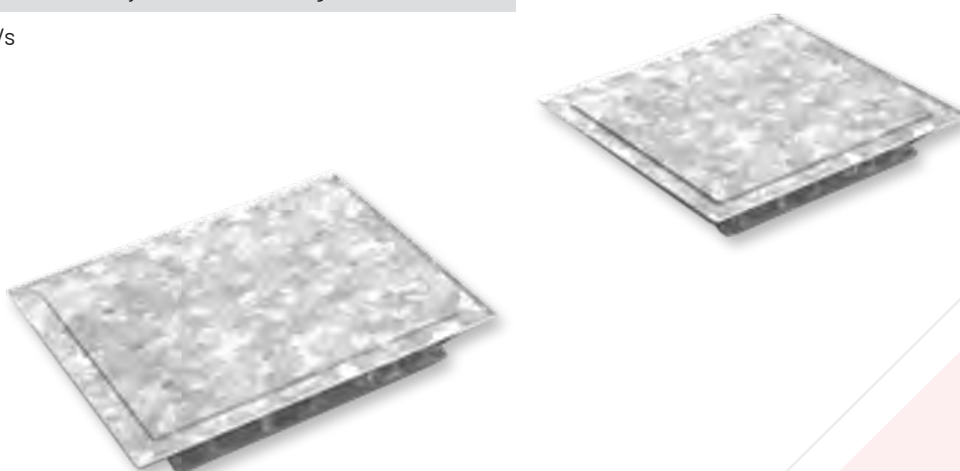
Checks steering and suspension system

Finds worn kingpin bushings, loose tie-rod ends, broken welds, loose fasteners and other failed components

Can be supplied with an axle load system to add 8,000kg to the axle

Plate speed: 36 mm/s

The in-ground shaker plates are generally installed either side of an inspection pit because access is required under the vehicle in order to see the movement in the steering joints. The movement can be controlled manually, automatically in selected directions or as a 10 cycle 'box movement' sequence. The radio linked remote control avoids expensive downtime from cable damage and allows the operator to not be restricted in their work.





## EMISSIONS TESTERS

### SMOKE METER

Accredited to latest Euro 6 standards

Ideal for checking vehicles compliant for low emission zones

Measures the efficiency of combustion in your engine

Will operate down to -15 degrees centigrade in all weathers

Can save you money by improving fuel economy

Accurate, reliable and portable to use

MOT-approved

Designed to cope with the rigours of demanding MOT bays

Free training provided by engineer



The diesel smoke meter is an excellent diagnostic tool to ensure proper maintenance of diesel engines for improved fuel economy and protection of the environment.



The unique cable-free petrol and diesel emission analyser has been designed to meet the latest DVSA requirements for the car, bus, and truck markets.



### PETROL & DIESEL EMISSIONS ANALYSER

Accredited to latest Euro 6 standards

Ideal for checking vehicles compliant for low emission zones

Measures the efficiency of combustion in your engine

Will operate down to -15 degrees centigrade in all weathers

Can save you money by improving fuel economy

Accurate, reliable and portable to use

MOT-approved

Colour monitor and a solid-state PC (offering the flexibility to run your own programmes)

Automatic calibration with every test - no more filters to lose or break

Remote operation of up to 100m of unit workstation

Fast test routines for increased productivity

Free training provided by engineer





## INSPECTION EQUIPMENT



A commercial vehicle inspection pit makes access to the underside of your vehicle easy, allowing you to work in a safe, well-lit environment with all your tools to hand.

### VEHICLE PITS

Pit lengths bespoke to suit requirements (from 6m upwards)

Class 4 and Class 7 pits also available

CE Marked to EN 1090-1 Exc 2

IP56 1500mm LED bulkhead tube lights

Structural calculations to verify 20,000kg jacking capacity

Unique bond of steel to concrete

Fully braced external walls of 5mm thick welded recessed steel pressing

6mm thick pressed durbar floor sloping to centre sump with 6mm cover

Fully braced externally at less than 1m spacing

Installed by experienced engineers

The pit can have built in brake testing units

No height restrictions – headroom not required

Greater vehicle throughput – it is quicker and easier to set up and remove vehicles on a pit

Non-standard depths and width possible on request

### RELATED PRODUCTS

#### JACKING BEAM

Two individually controlled rams offer safe and balanced lifting

Transversely sliding rams



#### TRANSMISSION JACK

1,000kg or 2,000kg load capacity versions

Manual, air, and pit versions available



#### OIL & FLUID MANAGEMENT

Oil drainers

Hose reels for air, water, oil



## HEADLAMP TESTERS

### 2100 HEADLAMP TESTER

Easy adjustment counterweight

Fresnel lens

Robust and light frame

Laser adjustment feature

Visual control and adjustment of dipped headlights, main beam and foglight

Powerful and timed lateral positioning laser with standby function

Accurate and consistent measurements

DVSA-approved

Free training provided by engineer



The 2100 Headlamp Tester is a robust device which is easy to use and does not require any external power supply.



### 2500 HEADLAMP TESTER

Dual mode: inspection (roadworthiness, PTI) adjustment

Headlamp adjustment, beam setters: low beam, high beam and for lamp

Laser aligning mode

LCD display

Easy and auto adjustment feature

Data transmission: wireless (BT, Wi-Fi), wired (RJ45, RS232) - connected equipment ready

Aluminium rotational mast: 150cm

Add integral printer



The Totalkare 2500 Headlamp Tester is perfect for checking both the orientation and intensity of a vehicle headlamp, to ensure that it meets the minimum required standards.



### 2600 HEADLAMP TESTER

Colour touch screen

Alignment laser

Connectivity: cable & Wi-Fi

Types of headlamps: fog, low & high beam

Positioning assistance

Measurements and values: cutoff, lateral, light intensity & glare

Level compensation for uneven floor

Battery operated



The Totalkare 2600 Headlamp Tester is perfect for checking both the orientation and intensity of a vehicle headlamp, to ensure that it meets the minimum required standards.





## ATF LANE EQUIPMENT

### WHAT'S INCLUDED?

Inspection Pits

Brake Testers

Play Detectors (shaker plates)

Headlight Testers

Emission Testers

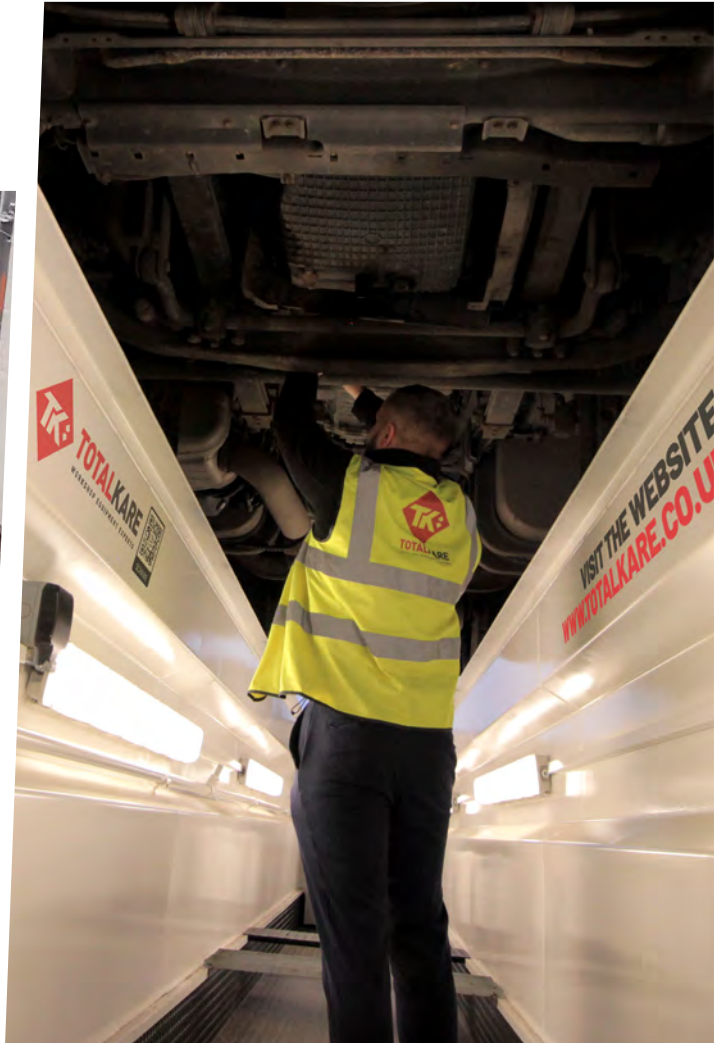
Pit Jacks

Smaller Ancillary Tools

Signage

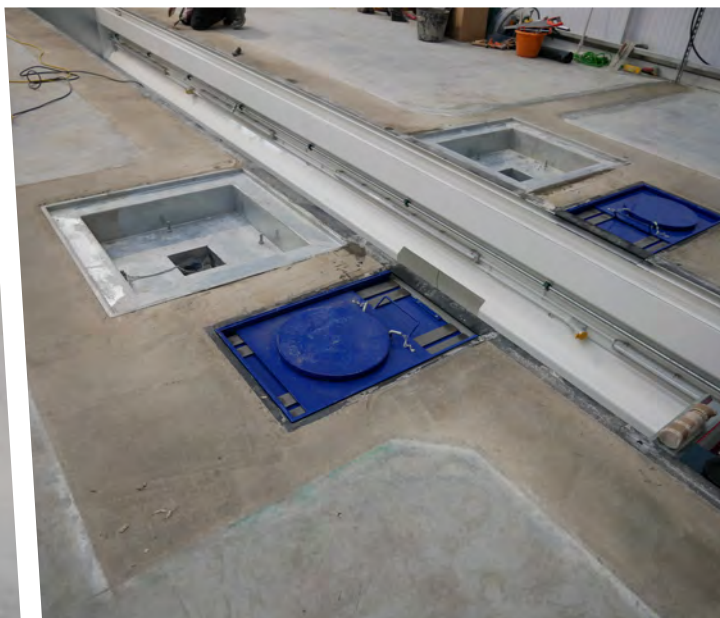
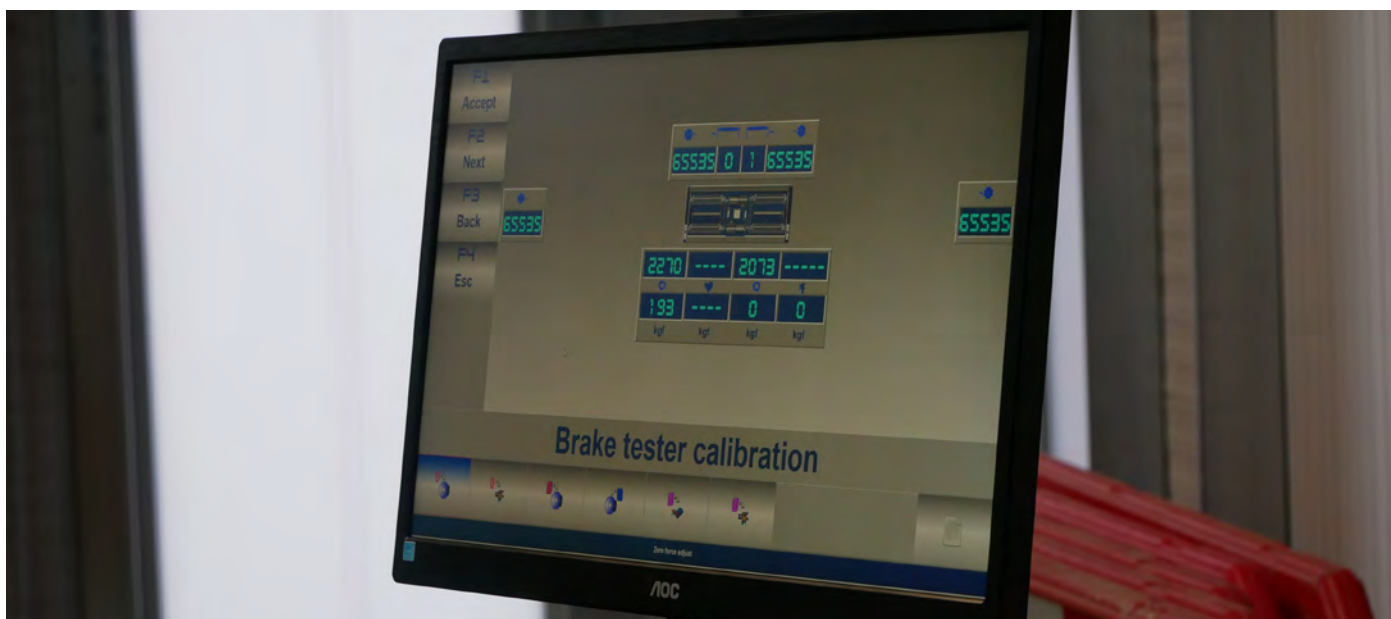
An Authorised Test Facility is a DVSA approved facility for carrying out MOTs on heavy good vehicles, trailers, buses and coaches. In order to set up a facility you will have to be first approved by the DVSA but also have the correct approved equipment which can all be supplied by Totalkare.

Totalkare can also offer free consultation and workshop design services to begin the process with the DVSA.





## ATF LANE EQUIPMENT





## CLASS 7 MOT BAY

If you are considering setting up a new Class 7 MOT bay or upgrading your existing equipment, Totalkare can supply all of the equipment required. Working closely with you, we can take you through the process from the design of your Class 7 MOT bay and application to the DVSA, through to the installation of the equipment and subsequent training and servicing.

### EQUIPMENT INCLUDED:

Hydraulic four post lift (with built-in radius plates, 6,500kg capacity, 6m platform)

Hydraulic play detectors

Jacking beam

In-ground brake tester

Headlamp tester

Petrol & diesel emissions analyser

Vehicle inspection pit

Standard MOT tools (if required)

The standard procedure for any of our Class 7 MOT bays is as follows:

### SITE SURVEYS

We will take detailed site measurements and layout information and in conjunction with the latest legislation we will talk you through the options available. We would suggest talking to an expert to carry out an assessment as the first step in any application.

### EQUIPMENT SELECTION

Choosing the right equipment is essential to ensuring the longevity of your equipment. We will advise what is the best equipment to suit your individual needs and requirements.

### SITE DRAWINGS

In order to obtain an agreement in principal from the DVSA a site CAD drawing will be required. We can assist you in the preparation of these drawings. We can also work directly with your chosen third parties such as groundworks, builders or architects to prepare these drawings.

### DVSA APPLICATION

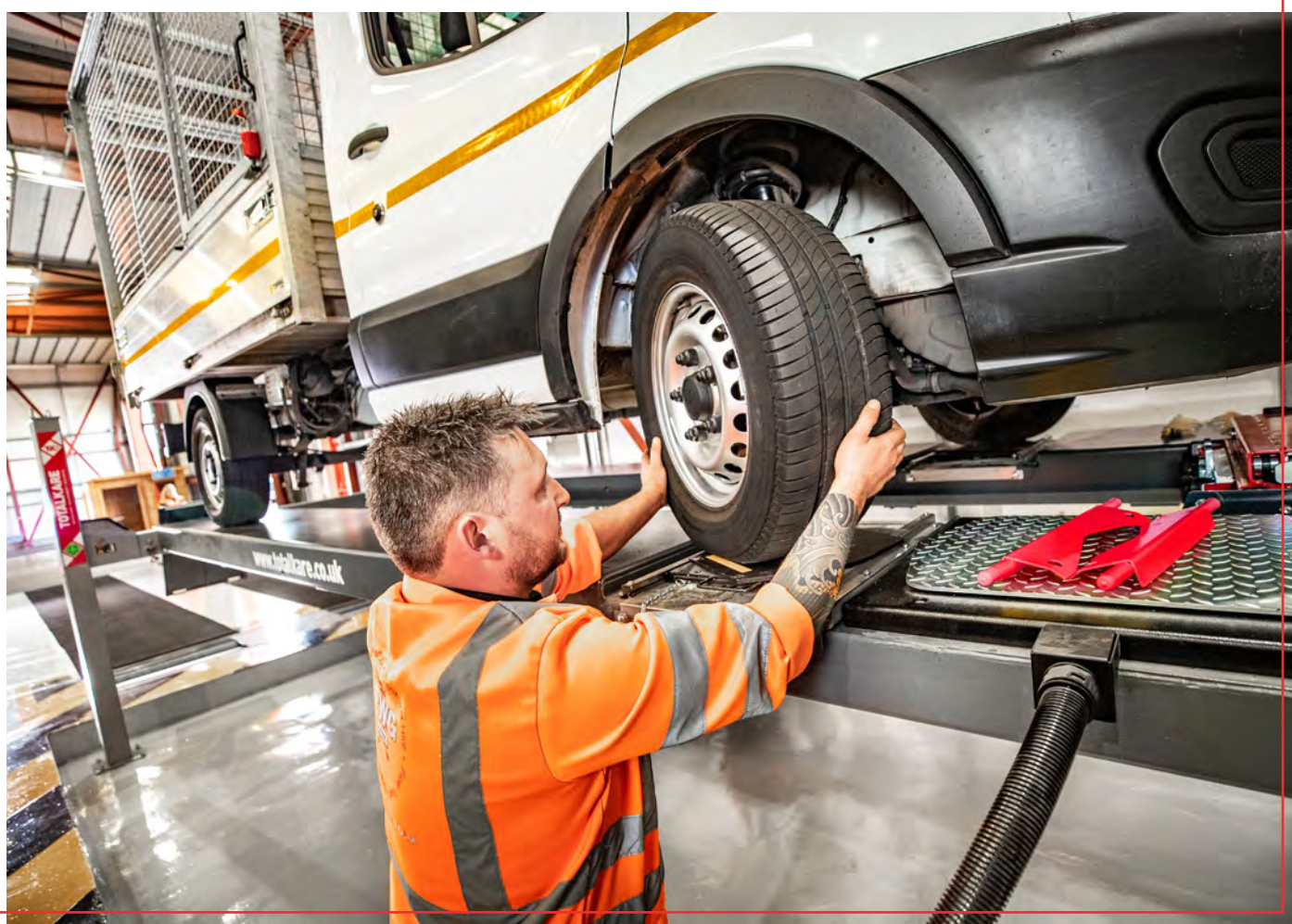
We will talk you through the DVSA application and assist you with the application.

### INSTALLATION AND TRAINING

All installations are carried out by our in-house engineers who will install and train you on the equipment we provide for you MOT test lane.

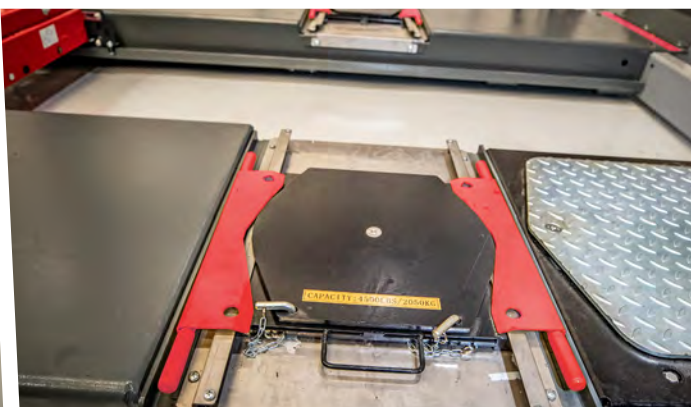
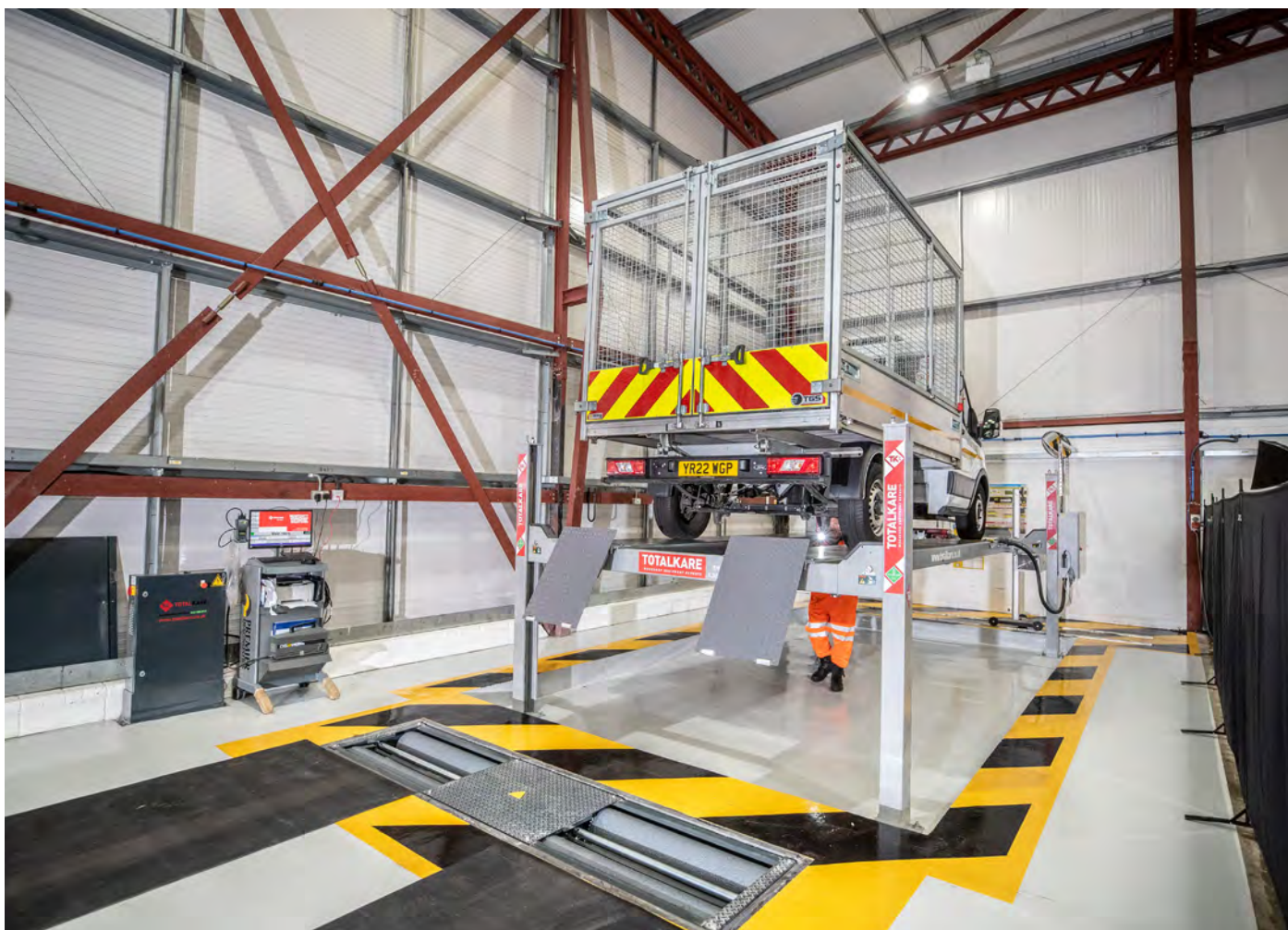
### AFTERCARE

As with all Totalkare equipment we can provide a comprehensive service and calibration service to ensure your MOT test lane remains productive and compliant.





## CLASS 7 MOT BAY





## WORKSHOP FITOUT

Offering every aspect of workshop fitout from concept and design, through sourcing and procurement, to service and maintenance, Totalkare is able to work with clients to create bespoke vehicle workshops and test lanes to their specific requirements

### SERVICES WE OFFER:

Design consultation

CAD design and technical drawings

Groundworks

Pipework systems

Oil and lubrication management systems

Compressed air, water and antifreeze pipework

Workshop heating/cooling systems

Exhaust and gas extraction

Electrical work

Flooring

Custom fabrications

Project management





## WORKSHOP FITOUT

Using our extensive knowledge of vehicle workshops, our experts will walk you through the design process identifying key features, products and solutions ensuring we provide a modern working environment whilst maximising workshop space and improving efficiencies in your work practices.





## WHEEL ALIGNMENT



Fuel efficiency and tyre life maximisation are both prime concerns in the transport industry. By carrying out in house wheel alignment you can reduce your fleets tyre wear and fuel usage. The heavy duty wheel alignment system from Totalkare ensures three-axle live results and uses rolling compensation, so no jacking required, giving you almost unlimited possibilities for commercial wheel alignments. Whether it's a van, HGV or bus, the Hunter WAHD is the perfect wheel alignment tool.

### DSP760T HEAVY DUTY WHEEL ALIGNMENT SYSTEM

Fast and accurate wheel alignment for multi-axle vehicles

6 Wireless optical sensors

The most extensive vehicle information database software

Vehicle specific procedures for technicians

Live axle data on 3 axles

Visualise all measurements at once

Toe and camber on front axle

Thrust and scrub on rear axles

Lightweight construction

Align trailers without unhooking from tractor unit

### QCHD - QUICK CHECK COMMERCIAL

Drive through commercial alignment inspection solution

Find alignment and tyre tread issues in seconds simply by driving through the sensors

Suitable for all commercial vehicles and multi axle configurations

Can be used as stand-alone wheel alignment check, tyre tread measurement or combined for complete inspection solution

Incorporated body image damage capture cameras

No technician required

The quick check commercial is an unmanned inspection for commercial vehicles measuring wheel alignment and tyre tread in seconds. Simply drive the vehicle past the lasers for a complete and instant alignment and tread wear scan. A quick check will identify wheel alignment and tyre tread issues avoiding excess fuel costs and increased tyre wear on misaligned vehicles and worn tyres.



## WHEEL SERVICING



This system incorporates specific balancing programs for static, dynamic and light alloys. One single spin with low rotation provides a readout of all values including out of balance values and the related position on the wheel.

### WHEEL BALANCER - 280

Digital caliper with optical sensor, with alloy shaft sliding on bushes

Complete with cones for trucks

An electro-pneumatic brake keeps the wheel in the unbalance position

Wheel diameter and width measured in inches or millimetres

Unbalance readout in grams or ounces



### LIGHT COMMERCIAL WHEEL BALANCER - 360WS

22" Full HD LCD monitor - Industrial PC

Maximum wheel capacity 43"

Automatic cycle

Laser pointer for weight positioning

With lighting

Ultrasound wheel width gauge

Automatic calliper up to diameter 30"

Complete with wheel hood, car cones and professional quick nut



### LIGHT COMMERCIAL WHEEL BALANCER - 350

20" Full HD LCD monitor - Industrial PC

Maximum wheel capacity 35"

Automatic cycle

Automatic calliper up to diameter 26"

Complete with wheel hood, car cones and professional quick nut



A tyre cage provides protection in the event of a tyre failure whilst inflating car, van, bus and truck tyres to prevent serious or fatal injuries.

### TYRE CAGES

Complete inflation equipment to inflate your tyre safely, efficiently, and effortlessly

Compliant with CE and DGUV - BGR 157 requirements

Certified to inflate tyres up to 9 bar

Powder coated finish



## TYRE CHANGERS – HEAVY

The NAV101 commercial tyre changer from Totalkare is capable of dismounting and mounting a tyre in only 30 seconds. Thanks to its unique design and equipped with four rollers the process of dismounting and mounting tyres could not be simpler. Each bead breaker is supported by two arms separately controlled. Each arm has two rollers, one conical which pushes on the bead and one cylindrical which pushes the side of the tyre.



### NAV101

Chucking unit rotation motor	2 kW
Hydraulic drive unit motor	1.5 kW
Maximum wheel Ø	1,320 mm (52")
Maximum allowed wheel width	540 mm (21.2")
Weight	650 kg
Bead breaker power	18,000 N
Maximum wheel weight	1,200 kg (2,645 lbs)
Chuck rotation speed (rev/min)	8
Maximum torque to chuck	2,600 Nm

The NAV26HW tyre changer is designed for roadside and workshop service. It is easy to use and suitable for closed vans or small workshops. Controls are protected on changer console and the hydraulic clamping and chucking table are suitable for agricultural tyres. Centre locking feature – single central docking with ring nut.



### NAV26HW

Chucking unit rotation motor	1,1 kW
Hydraulic drive unit motor	2 kW
Rims Ø	11" - 27"
Maximum wheel Ø	1,300 mm (51")
Maximum allowed wheel width	950 mm (37.4")
Weight	378 kg
Bead breaker power	16,000 N
Maximum wheel weight	1,200 kg
Chuck rotation speed (rev/min)	8
Maximum torque to chuck	1,700 Nm (1,253 Ft/Lbs)

The NAV11 Super duty truck tyre changer gives the ability to service a wide range of wheels. The operating dimensions of the clamping unit and of the head tool carriage allows operation on a wide range of wheels, including super-single. The controls, with lever type hydraulic distributors, enable user to regulate the speed of the tool holding carriage.



### NAV11

Chucking unit rotation motor	2,2 kW
Hydraulic drive unit motor	0,75 kW
Rims Ø	11" - 27"
Maximum allowed wheel Ø	1,640 mm (64")
Maximum wheel width	925 mm (36.4")
Chuck rotation speed (rev/min)	8
Weight	454 kg (1,000 lbs)

## TYRE CHANGERS – LIGHT



Automatic leverless tyre changer for car and light commercial tyre changers

### TC-KARACTER

Wheel size	10"-26"
Weight	315kg
Voltage	1ph, 200/265v, 50/60Hz
Maximum wheel width	15"
Maximum tyre diameter	46"
Bread brake power	1,2000N
Maximum torque	120 Kgm
Rotation motor	1.5Kw inverter + 0.75Kw motor
Recommended air supply	8 – 10Bar

Features extra-wide heavy-duty frame for high output garages. Automatic tyre changer with double-acting bead breaker cylinder, designed to work on even low-profile and large-sized steel or alloy rims. The pneumatically tilting column ensures peak rigidity to prevent rim damage. Works easily on any wheel up to a maximum width of 15 inches.



### TC-HP643

Wheel size	10"-26"
Weight	240kg
Voltage	1ph, 180/260v, 50/60Hz
Maximum wheel width	15"
Maximum tyre diameter	43"
Bread brake power	3,600kg (at 12 Bar)
Maximum torque	1,400 Nm
Chuck rotation speed	0-16 rpm

Automatic tyre changer with double-acting bead breaker cylinder, designed to work on even low-profile and large-sized steel or alloy rims. The pneumatically tilting column ensures peak rigidity to prevent rim damage. Works easily on any wheel up to a maximum width of 15 inches.



### TC-HP641

Wheel Size	10"-26"
Weight	240kg
Voltage	3ph 230/400V (50Hz)
Maximum wheel width	15"
Maximum tyre diameter	43"
Bread brake power	3,600kg (at 12 Bar)
Maximum torque	1,400 Nm
Chuck rotation speed	0-16 rpm



## DIAGNOSTICS

Cut downtime and boost workshop productivity with the leading multi-brand diagnostic solution for commercial vehicles. This powerful software provides dealer-level capabilities for trucks, buses, trailers, and LCVs from all major brands including DAF, MAN, Volvo, Mercedes-Benz, Iveco, Renault, and more.

Technicians can quickly pinpoint issues, access wiring diagrams, locate components, and find step-by-step repair instructions. The guided diagnostic system streamlines the troubleshooting process for even the most complex problems. With Eclipse-Jaltest CV - technicians have the technical resources of an entire dealership right at their fingertips. Its extensive vehicle coverage and comprehensive technical data reduce diagnostic time, helping workshops increase throughput and profitability. Backed by continuous updates - this diagnostic powerhouse delivers the technology needed to get the job done right the first time.



### ECLIPSE-JALTEST - COMMERCIAL VEHICLE DIAGNOSTICS

Multi-brand diagnostic software

Eclipse testpad extreme pro, handheld workshop tablet PC

Jaltest V9 link with long-distance Bluetooth

Eclipse remote assist

On site handover training

European truck and trailer cable kit (tailored to you)



## COMPRESSORS

### SPINN SERIES

SPINN is a range of oil injected screw compressors which provide excellent savings on installation and piping costs, along with a compact design and efficiency in energy consumption.



The all new air-end delivers high performance and low energy consumption, generating 15% more air and consumes 12% less energy. With a significant reduction in noise and vibration levels, thanks to an automated, quality-controlled assembly process, this can prevent human error to ensure maximum consistency in performance and reliability.

An intuitive control panel makes the compressor easy to use: all the information you need to operate your compressor is available at a glance. Additional features include running and loaded hours, remote start/stop, automatic restart, and failure warnings, allowing you flexibility and total control.

With its low noise level and small footprint, it's your perfect working partner. Can be placed alongside the application, minimising pressure drops and avoiding expensive pipework runs. Totalkare can provide a range of compressor options from base-mounted and tank-mounted with dryer. We can also offer the Genesis range.





## COMPRESSORS



Discerning compressed air users expect maximum availability and efficiency, even from smaller compressors. It will come as no surprise therefore that rotary screw compressors go far beyond meeting these key expectations. Not only do they deliver more compressed air for less energy, but they also combine ease of use and maintenance friendliness with exceptional versatility and environmentally responsible design.

### MODULAR SYSTEM CONCEPT

Many compressors are available as standard versions, as so-called "T" models that are equipped with an integrated, thermally shielded refrigeration dryer and as "AIRCENTER" models that additionally include an underslung air receiver. Kaeser's intelligent modular design therefore offers incredible flexibility in a neat and compact package.

### MAXIMUM EFFICIENCY

SM Series compressors were the first in the market with Super Premium Efficiency IE4 motors as standard, thereby delivering maximum performance and energy efficiency. All rotary screw compressors feature at least IE3 drive motors.

### SIGMA CONTROL 2

The SIGMA CONTROL 2 ensures efficient control and system monitoring. The large display and RFID reader provide effective communication and maximum security. Multiple interfaces offer exceptional flexibility, whilst the SD card slot makes updates quick and easy.

### SIGMA PROFILE AIREND

At the heart of every SM system lies a new premium quality airend featuring SIGMA PROFILE energy-saving rotors. Operating at low speed, airends are equipped with flow optimised rotors for superior efficiency.



## MANUAL HANDLING TOOLS

### WHEEL EXTRACTOR

Truck, bus and trailer 22.5", 19.5" And 17.5" rim size

Does not damage the wheel bearing or the rim

Fast and secure without physical effort

No more physical work with sledgehammer, skewers, heavy sliding hammers or heating



### HUB EXTRACTOR

Universal hub extractor for truck, bus and trailer

Ergonomic solution designed for single-technician use to detach stuck hubs on heavy duty vehicles such as trucks, trailers and semi-trailers

Hub Extractor I must be used with Brake Truck II to work the safest and easiest way possible

Reduction of time and effort



### BRAKE TRUCK I

Can hold up to 45kg

Suitable for all type of buses, industrial vehicles and trucks

Eliminates the problem of heavy components falling on your feet or hurting your back and arms.

Reduce up to 70% of the time spent on dismantling and assembling components

Operated by a single technician



### BRAKE TRUCK II

Can hold up to 140kg

Ensures a centred mounting of the axle box hubs avoiding the breaking of seals

Suitable for all type of buses, industrial vehicles and trucks

Eliminates the problem of heavy components falling on your feet or hurting your back and arms

Reduce up to 70% of the time spent on dismantling and assembling components

Operated by a single technician





## SCISSOR TABLES



Capacity: 2,000 Kg

Foot-activated hydraulic system

Simple and flexible handling

Reliable mounting and fastening of components

The compact design provides plenty of space underneath the vehicle

Large castors and parking brakes ensure excellent mobility in the workshop

Easy to maneuver even with load thanks to plastic rollers with ball bearings

14 mounting holes arranged on both left- and right-hand side of the platform offer plenty of possibilities to mount mounting tools

Fixed mounting plate with 2x7 holes for secure mounting of various supports



Available in manual and as a quick rise powered version

Capacity: 2,000 Kg

Motor: 2.2 KW Motor

Control Voltage: 24V

Control: 1x wire 1.5 Flexi lead standard dead-man hand control pendant with scissor up / down and emergency stop water & dust resistant electrical and hydraulic systems – IP54

All lifts tested to + 30% overload

Scissor arms constructed using steel profiles with torsion bars at points of maximum stress

Complete with upper travel limit switch

Pre-wired control box includes magnetic starter and overload fuse



**AXLE STANDS****ANCILLARY EQUIPMENT**

The axle stands can be used in two different ways. Firstly, to provide a free wheel support by removing the mobile vehicle lift whilst the vehicle is supported on an axle stand, and secondly, as a secondary support where the mobile vehicle lifts are not removed.

Working in conjunction with Totalkare's mobile column lifts, these ancillary products allow the operator additional flexibility and safety in the maintenance of vehicles.

7,500kg capacity

Tall Stand: Maximum Height – 2,030mm. Min Height – 1,520mm

Short stand: Maximum Height – 1,410mm. Min Height – 880mm





## ANCILLARY EQUIPMENT

### TRANSMISSION JACKS + ADAPTOR PLATES



The transmission jack is ideal for handling gearboxes and engines in most workshop situations and the perfect accompaniment to our mobile column lifts.

#### TRANSMISSION JACKS

1,000kg or 2,000kg load capacity versions

Manual, air, and pit versions available

Robust, reliable and simple to use

Load test certificate - supplied with each unit

Increased safety and manoeuvrability with our range of adaptor plates

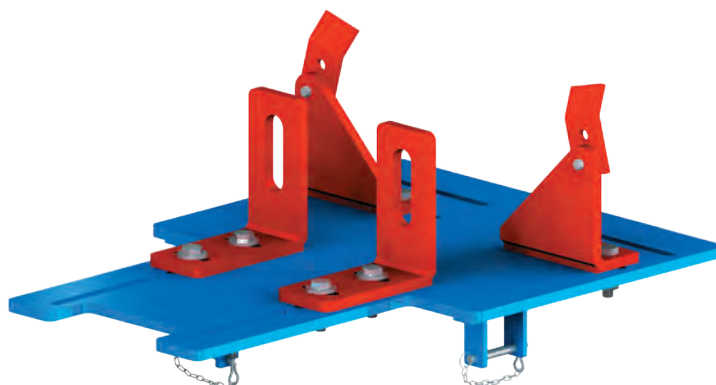
Manoeuvring heavy gearboxes and transmissions is difficult, time consuming and potentially hazardous. Our unique range of drive-line adaptor plates for transmission jacks are the perfect solution.

#### ADAPTOR PLATES

Work swiftly, safely and precisely, preventing the perennial problems of alignment

Each plate is custom-designed to provide the perfect fit for the transmission you are working on

Will significantly reduce the time you take to disconnect, remove and then reposition transmissions



Model	DESCRIPTION
9512	Gearbox Adaptor for larger transmissions
9612	5 Universal Gearbox Adaptor
9513	DAF 75/85, Rigid Vehicle (avoids removal of X member)(ZF9S & 6S - 106 Daf (Blue)
9514	Land Rover Defender Adaptor
9515	Adaptor Blocks for 9513 Gearbox Adaptor DAF 85
9516	Voith & ZF Automatic - Bus Gearbox Adaptor
9517	Volvo FM7/FM12 Gearbox Adaptor Plate
9517A	Volvo FM7/FM12 Gearbox Conversion Set - Converts 9512 to 9517
9521	ZF Eco Lite, Eco Mid, Eco Split Gearbox Adaptor
9522	Mitsubishi Shogun Gearbox Adaptor Plate
9523	Scania Universal Adaptor Pre 2007 (GR800, GR900, GRS900, 1992 onwards)

9523A	Scania Universal Adaptor Pre 2007 (GR800, GR900, GRS900, 1992 onwards) Conversion Set - Converts 9512 to 9523
9524	Brake Drum Hub Adaptor
9524A	Brake Drum Hub Adaptor Conversion Set - Converts 9512 to 9524
9525	Scania GRS 905 Gearbox Adaptor
9525A	Scania GRS 905 Gearbox Adaptor Conversion Set - Converts 9512 to 9525
9526	B12M Volvo Coach, ZF & Retarder Adaptor Plate
9526A	B12M Volvo Coach, ZF & Retarder Conversion Set - Converts 9512 to 9526

## BOTTLE JACKS

## ANCILLARY EQUIPMENT

Lifting capacity: 3,000 – 30,000kg

Great power-to-size ratio

Efficient, compact design

High leverage

Extremely portable and easily stored

Three year warranty

With their straightforward design and ability to lift significant weights to a high elevation, bottle jacks can be a perfect lifting solution for commercial vehicle workshops.

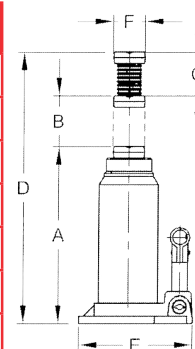
Mounted vertically, the compact design makes bottle jacks easier to store than other jacks, while lifting capacity ranges from 3,000 – 30,000kg depending in the model.

A telescopic version is also available – the jack is slightly short in a retracted position, but it extends much further than standard models.

Bottle jacks have a cylindrical body and a neck which extends vertically to provide a solution for lifting vehicles. They are compact and use a hydraulic lifting mechanism.

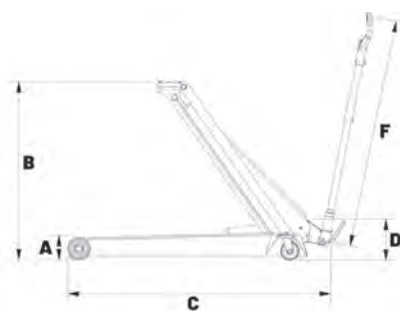


Model	Capacity (ton)	A (mm)	B (mm)	C (mm)	D (mm)	E (mm)	F (mm)	Kg
CBJ 3	3	193	120	60	373	110x103	26	3.4
CBJ 5	5	210	136	70	416	122x115	30	4.5
CBJ 10	10	230	150	80	460	132x120	36	5.9
CBJ 15	15	230	150	60	440	144x134	43	7.3
CBJ 20	20	242	150	60	452	159x143	46	9.5
CBJ 30	30	275	165	-	440	169x153	49	12.4
CBJ-T 10	10	215	247	78	540	150x145	37	9.8

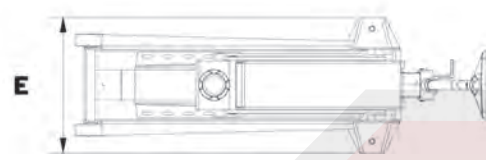


## ANCILLARY EQUIPMENT

## TROLLEY JACKS



Totalkare trolley jacks provide hassle-free lifting of heavy duty vehicles, enabling the user to perform inspection, repair and maintenance work swiftly when required. Lifting an entire frame or wheel axle with ease, the trolley jack provides the elevation you need in order to carry out essential work on your vehicle, be it a wheel change or brake adjustments.

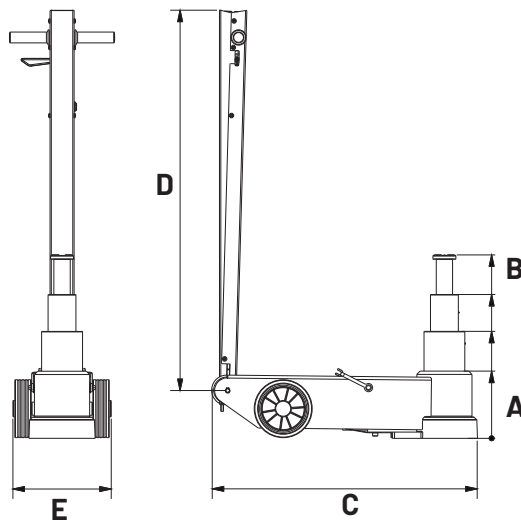


Model	Capacity (ton)	A (mm)	B (mm)	C (mm)	D (mm)	E (mm)	F (mm)	Kg
DK13HLQ	4	140	975	1,290	265	525	1,200	70
DK20	5	145	560	1,270	200	465	1,045	71
DK20HLQ	6	155	570	1,395	210	470	1,045	90
DK20Q	10	165	580	1,410	225	435	1,045	106
DK40Q	12	170	670	1,700	280	470	1,045	150
DK50HLQ	15	200	600	1,790	325	475	1,045	162



## ANCILLARY EQUIPMENT

### AIR OPERATED TROLLEY JACKS



Model	Capacity (ton)	A (mm)	B (mm)	C (mm)	D (mm)	E (mm)	Kg	Bar
B25-2	25 / 10	160	235 / 320	535	550	290	28	9 - 12
25-1	25	220	345	770	1160	305	71	9 - 10
25-1H	25	360	610	820	1160	310	71	9 - 10
25-2	25 / 10	180	275 / 380	770	1160	305	60	9 - 10
50-2	50 / 25	220	340 / 450	810	1160	315	80	9 - 10
50-3	50 / 25 / 10	150	210 / 265 / 335	810	1160	310	67	9 - 10
50-3H	50 / 25 / 10	220	340 / 450 / 560	810	1160	310	77	9 - 10
40-4	40 / 27 / 16 / 10	100	145 / 180 / 230 / 275	630	1160	225	54	6 - 10
65-1	65	245	380	825	1160	380	95	9 - 10
65-1H	65	425	725	980	1160	380	138	9 - 10



## FORKLIFTER SYSTEM

# ANCILLARY EQUIPMENT



Totalkare's Forklifter ramp system is designed as a safe and reliable way of lifting your forklift fleet.

8,000kg lifting capacity

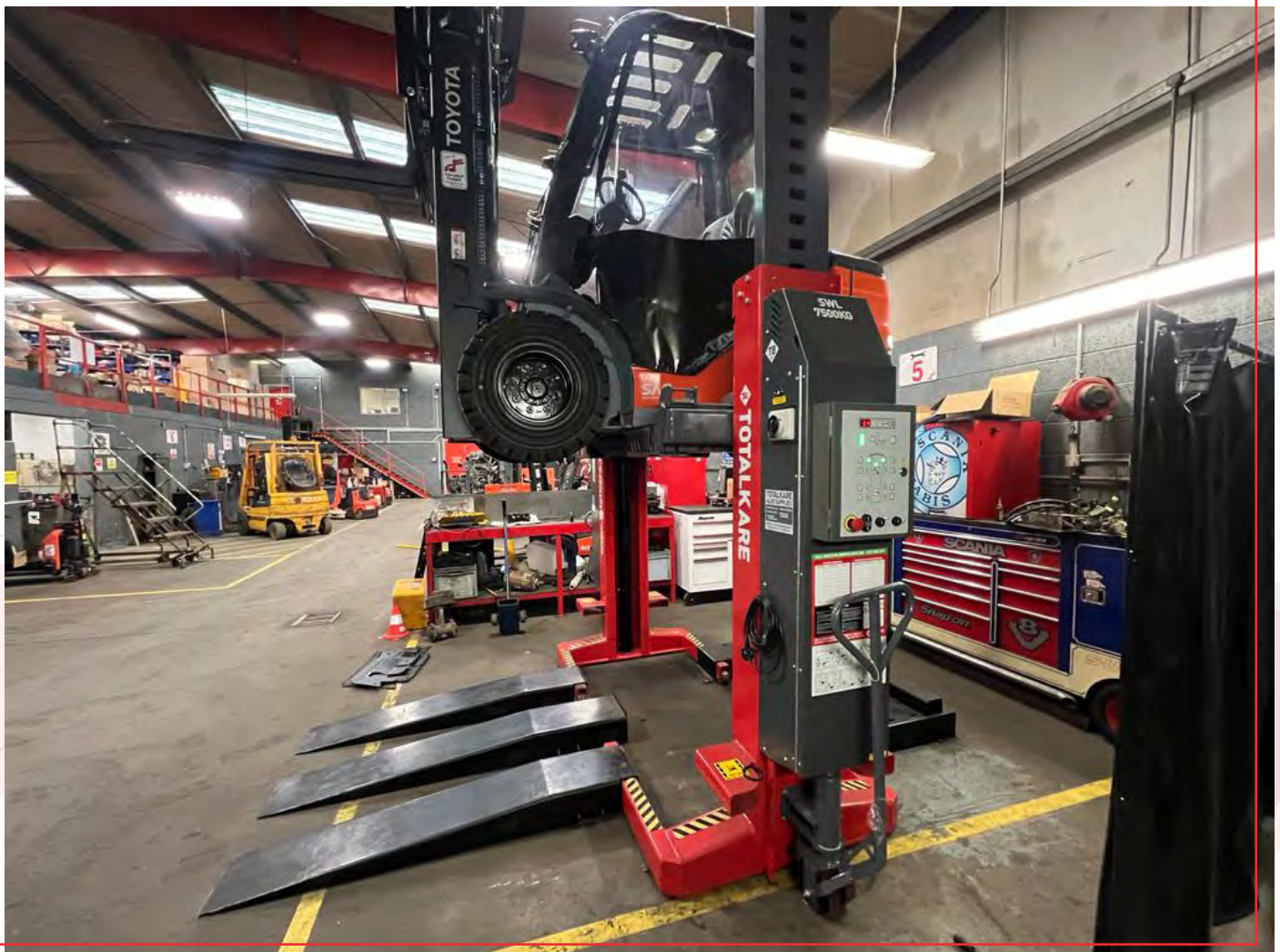
Works with existing mobile column lifts in your workshop

General Access – allowing safer & more efficient working conditions.

One Man Operation – reducing health & safety issues.

Mobility – allowing easy movement of equipment

Suitable for three- or four-wheeled forklifts





## ANCILLARY EQUIPMENT

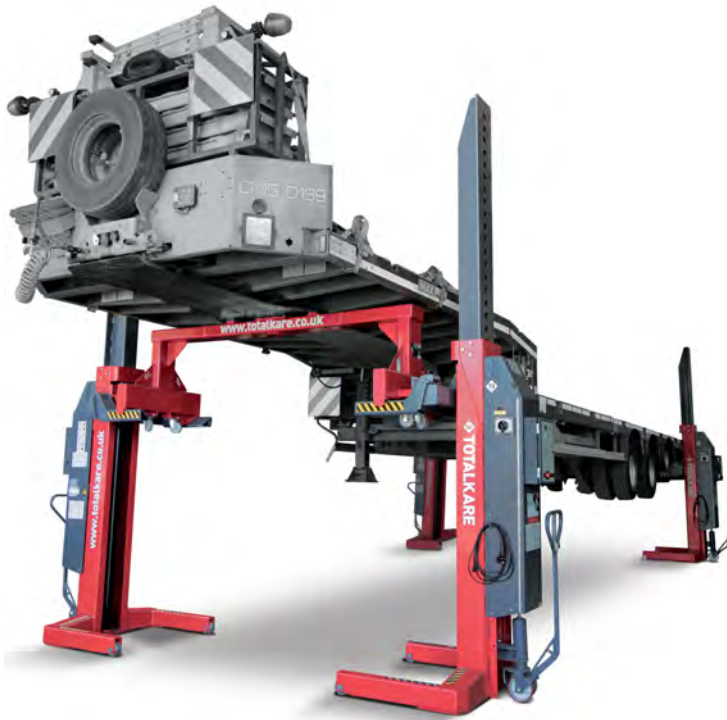
### TRAILER BEAM

Increase your working flexibility with our trailer beam, which works in conjunction with mobile column lifts to enable trailers to be lifted without the tractor unit.

7,500kg capacity

900mm height

2,850mm width



## HYDRAULIC PRESS

## ANCILLARY EQUIPMENT

**40kg - HAND HYDRAULIC**

Hand hydraulic press for truck workshops and industry

Foot-operated double-acting pneumatically controlled high speed leaving both hands free for quick and precise positioning of item

Traversing ram

With 300 mm stroke for dealing with demanding jobs

Built-in pressure gauge at convenient eye level

Wide, welded frame and press table ensuring high flexibility

Winch operated press table

Built-in safety overload valve

Removable ram end cap for mounting of various piston heads

Supplied with two vee blocks

**40kg - ELECTRO-HYDRAULIC**

Electro-hydraulic press for truck workshops and industry

Electro-hydraulic single stage pump (press speed: 6,1 mm/sec)

The pressure can be set to any required tonnage up to 40 t

Built-in safety overload valve

Traversing double-acting ram

Long stroke of 300 mm

Built-in pressure gauge at convenient eye level

Wide, welded frame and press table

Winch operated press table

Built-in safety overload valve

Removable ram end cap for mounting of various piston heads

The motor is 3x400V and 50/60 Hz (can be switched for 3x230V)

Supplied with two vee block

**16kg/20kg - HAND HYDRAULIC**

Hand hydraulic junior presses for passenger car workshops and light commercial vehicles

Foot-operated pneumatically controlled high speed and precise ram approach to work piece

Traversing ram

Built-in pressure gauge at convenient eye level

Built-in safety overload valve

Welded frame and press table made from high strength steel for long life

Removable ram end cap for mounting of various piston heads

Supplied with two vee blocks

**25kg - HAND HYDRAULIC**

Hand hydraulic junior presses for passenger car workshops and light commercial vehicles

Foot-operated pneumatically controlled high speed and precise ram approach to work piece

Traversing ram

Built-in pressure gauge at convenient eye level

Built-in safety overload valve

Welded frame and press table made from high strength steel for long life

Removable ram end cap for mounting of various piston heads

Supplied with two vee blocks

**60kg - FOOT-OPERATED**

Foot-operated double-acting pneumatically controlled high speed leaving both hands free for quick and precise positioning of item

Traversing ram

With 300mm stroke for dealing with demanding jobs

Built-in pressure gauge at convenient eye level

Wide, welded frame and press table ensuring high flexibility

Winch operated press table

Built-in safety overload valve

Removable ram end cap for mounting of various piston heads

Supplied with two vee block



## ANCILLARY EQUIPMENT

### HYDRAULIC PRESS

#### 60kg - ELECTRO-HYDRAULIC

Electro-hydraulic press for truck workshops and heavy industry

The pressure can be set to any required tonnage up to 60,00kg

Traversing double-acting ram with long stroke of 300mm

Built-in pressure gauge at convenient eye level

Winch operated press table

Removable ram end cap for mounting of various piston heads

The motor is 3x400V and 50/60 Hz (can be switched for 3x230V)

Supplied with two vee blocks

#### 100kg - HAND HYDRAULIC

Hand hydraulic press for truck workshops and heavy industry

Foot-operated double-acting pneumatically controlled high speed leaving both hands free for quick and precise positioning of item

Traversing ram

With 300mm stroke for dealing with demanding jobs

Built-in pressure gauge at convenient eye level

Wide, welded frame and press table ensuring high flexibility

Winch operated press table

Built-in safety overload valve

Removable ram end cap for mounting of various piston heads

Supplied with two vee block

#### 100kg - ELECTRO-HYDRAULIC

Electro-hydraulic press for truck workshops and heavy industry

Traversing double-acting ram with long stroke of 300mm

The pressure can be set to any required tonnage up to 100,000kg

Built-in pressure gauge at convenient eye level

Wide, welded frame and press table ensuring high flexibility

Winch operated press table

Removable ram end cap for mounting of various piston heads

The motor is 3x400V and 50/60 Hz (can be switched for 3x230V)

Supplied with two vee blocks

#### ACCESS STEPS

## ANCILLARY EQUIPMENT

Mobile access steps provide a quick and safe way for operators to work at height.



Central brake mechanism

Integral anti-ascent bar

Other sizes available on request

Weight: 150kg

Overall height - 2,750mm

Platform height - 1,750mm

Overall length - 1,450mm

Overall width - 750mm

Platform size - 700mm x 800mm

Our access steps are strong and robust, whilst still being relatively lightweight and therefore significantly easy to move around your workshop. The access steps come with a handrail, which provides increased stability for the user allowing them to safely access heights, reducing risk of injury. The integral safety braking systems are in place to ensure the platform steps do not move when in use.

## ANCILLARY EQUIPMENT

### 60kg

Effortless foot operated lifting

Outside diameter Maximum 820 mm

Effortless foot operated lifting

No heavy, manual lifting

The wheel lifter lifts the wheels straight from the floor

Rollers with ball bearings for easy rotation and positioning

Easy access to wheel bolts

The wheel is positioned away from the main piston

Our wheel dollies can provide easy and safe mounting, demounting and handling of heavy wheels for trucks, buses, coaches and other heavy-duty vehicles.



### 500kg

For vans, trucks and buses

Flexible and ergonomic wheel dolly for the easy removal of wheels and brake drums

Adjustable lifting arms for wheel sizes Ø 270 – 1,300mm

Lifting arms with roller bearings for easy rotation of the wheel into correct position

Pedal operated pump leaving both hands free for working

Bracket for easy securing of the wheel whilst transporting

Hand operated dead man's release for optimum safety whilst lowering

Ideal for lifting brake drums, fuel tanks, tool boxes etc.

Four pieces of nylon castor wheels for optimum manoeuvrability



### 1,600kg

1,600kg – for hydraulic wheel trolley for agricultural and construction machinery

Easy handling of the largest wheels in the world

Two robust handles makes it easy to manoeuvre in the workshop

A simple switch makes expansion or retraction of the jaws very easy

The wheel can be secured with a ratchet strap for maximum safety

Wheel sizes: min. Ø 1,000 mm – maximum Ø 2,400 mm

Wheel width: maximum 1,200 mm

Ideal for lifting brake drums, fuel tanks, tool boxes etc.

Four pieces of nylon castor wheels for optimum manoeuvrability





## ANCILLARY EQUIPMENT

### AIR OPERATED PIT JACKS



Totalkare's air-operated pit jack is an ideal addition to any commercial vehicle workshop with a vehicle inspection pit, with the air operation offering a safe and efficient method of lifting large vehicles with ease.

Lifting capacities: 12,000kg, 16,000kg, 20,000kg

Specifically designed for use in vehicle inspection pits

Air operation provides easy, quick lifting

Precision engineered for lasting reliability

Twin ram operation

Mechanical safety lock

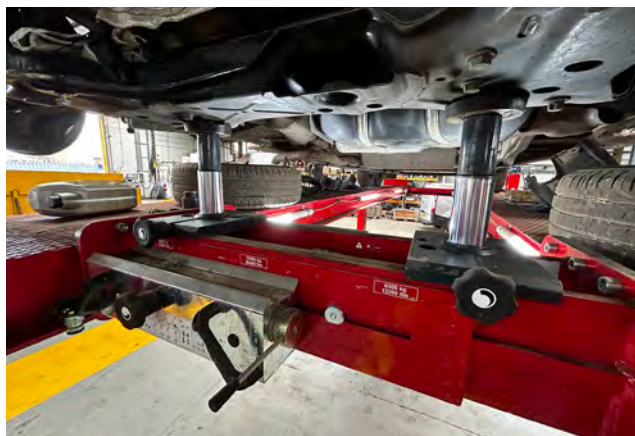
Hand Operated Pit Jacks also available

Mechanical safety lock



## JACKING BEAMS

# ANCILLARY EQUIPMENT



Jacking beams are a vital piece of equipment for vehicle lifts and pits, allowing you to lift vehicles to gain access to key components on vehicles whilst on the vehicle lift. The heavy duty commercial jacking beams from Totalkare are available in 12,000kg, 16,000kg and 20,000kg lifting capacities.

## HEAVY DUTY JACKING BEAMS

Fast, precise and reliable thanks to the high quality hydraulic unit

Unique support arm system guaranteeing a perfect fit for any type of lift

Flexible reach thanks to the top support beam and lifting extensions ensuring a perfect fit every time

Additional extensions and accessories available to complement the range



The light commercial jacking beams from Totalkare are available in 2,600kg, 3,200kg and 4,000kg lifting capacities. The 2,600kg jacking beam is available as manual or an air hydraulic operated model. The specific support arms on the light weight jacking beams are suitable for most existing lifts on the market.

## LIGHTWEIGHT JACKING BEAMS

Fast, precise and reliable thanks to the high quality hydraulic unit

Unique support arm system guaranteeing a perfect fit for any type of lift

Flexible reach thanks to the top support beam and lifting extensions ensuring a perfect fit every time

Optimum safety via a 'dead mans' release, automatic safety locking device and built in overload valve for optimum safety

Extensions included – supplied with extension sets and rubber cushions (except the 4,000kg version)

Additional extensions and accessories available to complement the range





## ANCILLARY EQUIPMENT

### RADIUS PLATES



Vehicle radius plates allow the technician to turn the wheels of a vehicle in a desired direction mechanically, without using the steering wheel inside the vehicle.

Loading bearing of 18,000kg per axle

Includes trays for installation

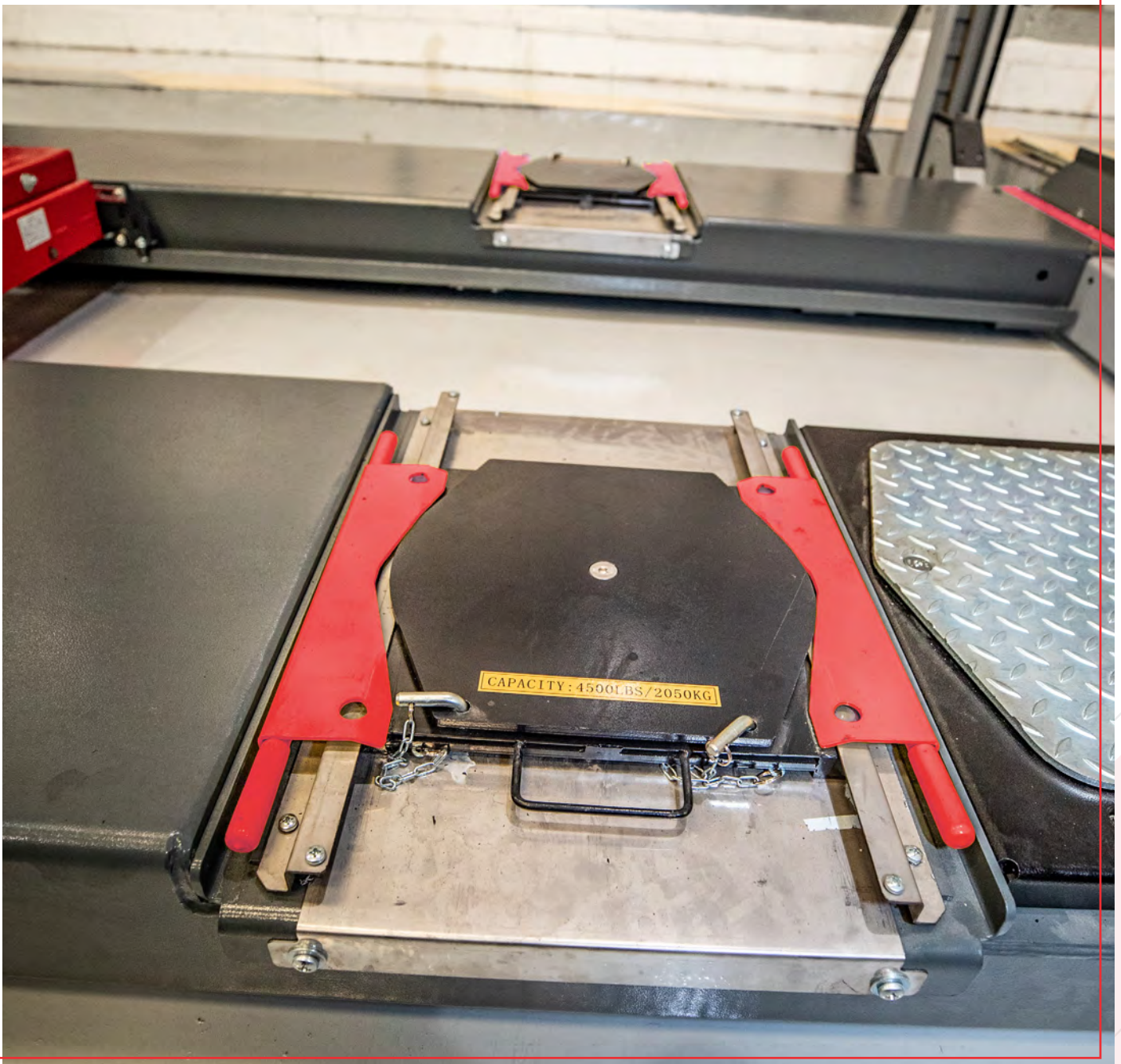
Multiple roller bearings

Low resistance design for smooth operation

Includes locking pins

Powder coated finish

Supplied in subframe



**LUBRICANT/GREASE POT****ANCILLARY EQUIPMENT**

These can be set to a six or twelve month life span (depending on the use of the lift) to be changed at the recommended service interval. They can be changed in house or by a Totalkare engineer during a service visit. Each pot weighs 285g when full.

**WORKS WITH THE FOLLOWING MOBILE COLUMN LIFTS:**

RG

MVL

SVL2000

SVL2002

SERIES IV



With Totalkare's induction heater, you're able to generate heat inside a vehicle component – at a rapid pace, and without the risks of using a flame. In most cases, induction heaters are used on individual components that have seized up due to age or wear and tear.

**HEAVY DUTY INDUCTION HEATER**

Ideal for workshops or industries requiring high-end heat levels

Input Power 16 kW - IEC60309 electrical connection

32 Amp

400V/3P+T 50Hz

Working frequency 15-30 KHz

IP 21 Degree of protection

Hydraulic heat exchanger with fan

20 litre tank - Liquid cooling system (water & propylene glycol)

130kg in weight

Adaptive inductance field reading (autotuning)

Electronic safety protection

Heating temperature level setting

User-friendly colour touch control panel - 5"

Long inductor cable 4.25m

Our range of workshop heaters can be used to heat only the areas required for the time required, without the need for any preheating. The technique and the installations required are similar to those for lighting: simple, economical, and all it takes is a click to obtain the necessary heat immediately. The heaters are installed only where required. They require virtually no maintenance, and the bulbs last for over 7,000 hours.

**WALL MOUNTED WORKSHOP HEATER**

Adjustable wall mounted workshop heater

Heat resistant glass

Watertight die-cast aluminium structure

Wall mounted at 45°

Gross weight 10.5 kg

Power: 1,500 watts

**FREESTANDING WORKSHOP HEATER**

Vertically adjustable model

Two separate on/off switches

Gross weight 20 kg

Power: 3,000 watts





## TORQUE TOOLS

### EVOTORQUE BATTERY TOOL



#### EVOTORQUE BATTERY TOOL

Operates between: 200.00 - 4,000.00 N-m  
Operates between: 150.00 - 2,950.00 lbf-ft



#### PNEUTORQUE PTS TORQUE TOOL

Operates between: 100.00 - 2,000.00 N-m  
Operates between: 74.00 - 1475.00 lbf-ft



#### PNEUTORQUE PTM TORQUE TOOL

Operates between: 100.00 - 2,000.00 N-m  
Operates between: 74.00 - 1,475.00 lbf-ft



#### EVOTORQUE2 FASTENER TOOL

Operates between: 100.00 - 4,000.00 N-m  
Operates between: 74.00 - 3,000.00 lbf-ft



#### T' TYPE INDUSTRIAL RATCHET

Operates between: 15.00 - 300.00 lbf-ft  
Operates between: 20.00 - 400.00 N-m



#### MUSHROOM HEAD INDUSTRIAL RATCHET

Operates between: 20.00 - 400.00 N-m  
Operates between: 15.00 - 300.00 lbf-ft



#### ADJUSTABLE INDUSTRIAL RATCHET

Operates between: 200.00 - 1,000.00 N-m  
Operates between: 150.00 - 750.00 lbf-ft



#### HANDTORQUE HT3 MULTIPLIER

Operates between: 100.00 - 10,00.00 N-m  
Operates between: 74.00 - 738.00 lbf-ft



#### ADJUSTABLE NORTORQUE RATCHET

Operates between: 20.00 - 300.00 N-m  
Operates between: 15.00 - 300.00 lbf-ft



#### TORQUE SCREWDRIVER KIT

Operates between: 0.30 - 3.00 N-m  
Easy torque adjustment



#### TRUCHECK TORQUE WRENCH CHECKER

Enables torque wrench performance to be monitored



#### LUBRO CONTROL UNIT

100mm/4" gauge for accurate pressure setting  
Heavy duty, steel braided 3m air hose

## AIR CONDITIONING



The new ASC 6000-series service units from Totalkare have a triple certification for R134a, R1234yf and R513A. Workshops can choose between all models, regardless of which refrigerant you want to use them for. However, the unit is assigned to a refrigerant type in the initial installation process.

### AIR CONDITIONING SERVICE UNITS

USB interface

Fully automatic A/C service (depending on model)

Designed and manufactured for an optimal and reliable operation, ensuring value for money and peace of mind

Designed to perform in the most efficient manner, including measuring accuracy

Safety of both machine and operator when handling, in line with relevant legislation

Flushing kit and connection kit available

The choice of the connection kit depends on the type of refrigerant in the A/C system. You can also choose between different hose lengths: 3, 5 or 8 m. In a busy workshop longer hoses are an advantage, as the aircon service can be completed while the vehicle is lifted for other service jobs.

### CUSTOMISE YOUR SERVICE UNIT



SERVICE UNIT	ASC 6100 G	ASC 6300 G	ASC 6300 G LE	ASC 6400 G	ASC 6100 G LE
Triple certified (for R134a, R1234yf, R513A)	•	•	•	•	•
Humidity free oil and UV additive feeding	•	•	•	•	•
Swivel and tilt manometer panel		•	•	•	•
Printer		•	•	•	•
Wi-Fi ready	•	•	•	•	•
Heat belt (fast charging)	Optional extra	•	•	•	•
Three separate weighing cells for UV additive and oil management		•	•	•	•
Charging cylinder	9 kg	16 kg	16 kg	28 kg	28 kg
No transport lock necessary	•	•	•	•	•
Gas analysis		Optional extra	Optional extra	Optional extra	Optional extra
Electric/hybrid ready	•	•	•	•	•
Hybrid flushing kit	Optional extra	Optional extra	Optional extra	Optional extra	Optional extra
Fluid pump for fast recharging of large refrigerant amounts				•	•
Delivery and start-up included	•	•	•	•	•
99.9% refrigerant recovery (Low Emission)			•		•



## OIL/FLUID MANAGEMENT

### HOSE REELS



Our range of Hose Reels come in varying lengths and applications to handle a number of fluids. The tough but lightweight construction of the hose reels is able to stand regular use and abuse in intensive heavy duty applications. The fatigue resistant steel spring will ensure years of durable performance and an even load when pulling and recoiling the hose. Depending on the model chosen, our hose reels can handle a range of fluids and can be mounted in a variety of ways - please see the full list below.

#### FLUIDS HANDLED

Air

Water

Antifreeze and Windshield Wash Solutions

High Pressure Hot Water

Synthetic and Mineral Oils

Grease & Hydraulic Fluid

AdBlue®/DEF



#### MARKETS/APPLICATIONS

Car and truck dealers

Service shops

Fleets

General manufacturing

Service stations

Lube trucks

Quick lubes

Mining and construction

Railroad and mass transit

#### MOUNTING

Floor

Wall

Ceiling

Tank



**REEL STANDS**

# **OIL/FLUID MANAGEMENT**

**MODELS**

Hose reel frame with drip tray for up to six hose reels:  
 Very solid construction, allows mounting six RM-12, RM-12S and RM-12L  
 Includes perforated internal side panels and drip tray.  
 Dimensions: 1543 x 760 x 2,600 mm  
 Floor mounted

Height extension kit for use with six hose reel frames:  
 The kit adds 500mm to the stand height

Additional bracket to accommodate a further two hose reels for use with six hose reel frames: The additional bracket allows mounting two additional hose reels on one side of a six reel stand

Hose reel stand for up to two hose reels:  
 Can be used with any pair or RM-12 hose reels  
 Floor mounted  
 Height: 2,375mm

Hose reel frame with drip tray for up to three hose reels:  
 Can be used with any RM-12 series hose reels  
 Floor mounted  
 Dimensions: 1,200 x 400 x 2,220 mm

Hose reel frame with drip tray for up to five hose reels:  
 Can be used with any RM-12 series hose reels  
 Floor mounted  
 Dimensions: 1,750 x 400 x 2,220 mm

Hose reel frame with drip tray for up to six hose reels:  
 Very solid construction, allows mounting six RM-12CL and RM-34 reels.  
 Includes perforated internal side panels and drip tray.  
 Dimensions: 1,972 x 760 x 2,600 mm  
 Floor mounted





## AGRICULTURE



Our agricultural adapters are universally applicable and thus excellent for the safe lifting of tractors of various manufacturers.

Double load protection ensured safety

Intuitive operation

Quick change of position by forklift possible

The tractor adapter set finds its place in the workshop tidily

Emergency stop buttons present on each column



## LIFTING MODULAR BUILDINGS

5,000kg lifting capacity per column

Available in four, six or eight column configuration

Inverted hydraulic cylinder lifting system

Control lifting operations from any column

Utilising a rubber top infill plate our T8 mobile column lifts can be adapted to lift a variety of items where lifting via a wheel is not available or applicable - this includes modular buildings.

Our specially designed infill plates create a platform to lift a flat bottomed object safely and securely to a capacity of 5,000kg per column. These can be used in sets of four, six or eight to give you the capacity required.



## RAIL DEPOT EQUIPMENT

### RAIL JACKS

5,500kg – 50,000kg lifting capacities

Computerised control unit with Wi-Fi remote control, event storing and recording, and self-programmed maintenance

Possibility to synchronise from 4 to 128 columns

Fixed or movable lifting carriage options

IP 55 level of electrical protection

Low tension control with emergency stop button for safety

Whether you're lifting a single carriage or a complete train, Totalkare's railway lifting jacks are the ideal solution when it comes to the maintenance of rail vehicles.

Totalkare's railway lifting jacks are perfect for depots and workshops. Available in a range of lifting capacities from 5,500kg to 50,000kg per jack, they are heavy duty and reliable.

The jacks can be used in configurations of 4 to 128 columns, with computerised control units providing easy synchronising, enabling the lifting of a single carriage or a series of rail cars.





## RAIL DEPOT EQUIPMENT



The hydraulic bogie lifting platform which runs on rails, allows the handling, removal and the assemble of railway bogies during maintenance.

### BOGIE LIFTING PLATFORM

6,000kg - 14,000kg lifting capacities

Motorised translator of +/- 25 mm, in order to adjust the tracks for the bogies correct position

Safety laser scanner able to detect obstacles during horizontal movement

Electrohydraulic activation system

Wireless pendant control

It has a lifting capacity between 6,000kg - 14,000kg and is compliant with the UNI EN 1570-1 directive. The upper pad has a central opening which allows operators to work under the lifted railway carriage.

The hydraulic bogie lifting platform which runs on rails, allows the handling, removal and the assemble of railway bogies during maintenance.

### RAIL INSPECTION PITS

Unique bond of steel to concrete

High quality safety lights provide superior lighting

The fully welded construction stops the ingress of water

Installed by experienced engineers

No height restrictions - headroom not required

Greater workshop efficiency leading to greater throughput and profitability

A great benefit of installing a rail inspection pit in your workshop is that once its installed, it can last forever. A pit makes it possible to work underneath a railed vehicle at the same time as above the vehicle which can increase productivity in your workshop.

Although rail pits are usually built around a traditional basic format, they can also be tailored to suit the requirements of individual railway workshops. Designs can also include an endless range of combinations, for example, tunnels; recesses and underground workshops.



## ERGONOMIC POSITIONERS

Totalkare's ergonomic positioners are single or double column devices that enable the lifting and rotation of a product during welding and assembly operations. With overall capacity from 2,000 – 90,000kg to suit, Totalkare's ergonomic positioners are both compact and flexible.

Capacities: 2,000 – 90,000kg

Safety: reduces the need for dangerous movements while operating lifting equipment such as overhead cranes

Health: welders and operators always maintain the correct posture and reduce fatigue

Improved production quality: allowing the operator to work at an ideal height and in the correct position

Increased productivity: lifting and turning products without overhead cranes or ordinary cranes reduces downtimes

Hand held remote included

The ergonomic positioners come in four versions:

Two columns – one fixed and one movable

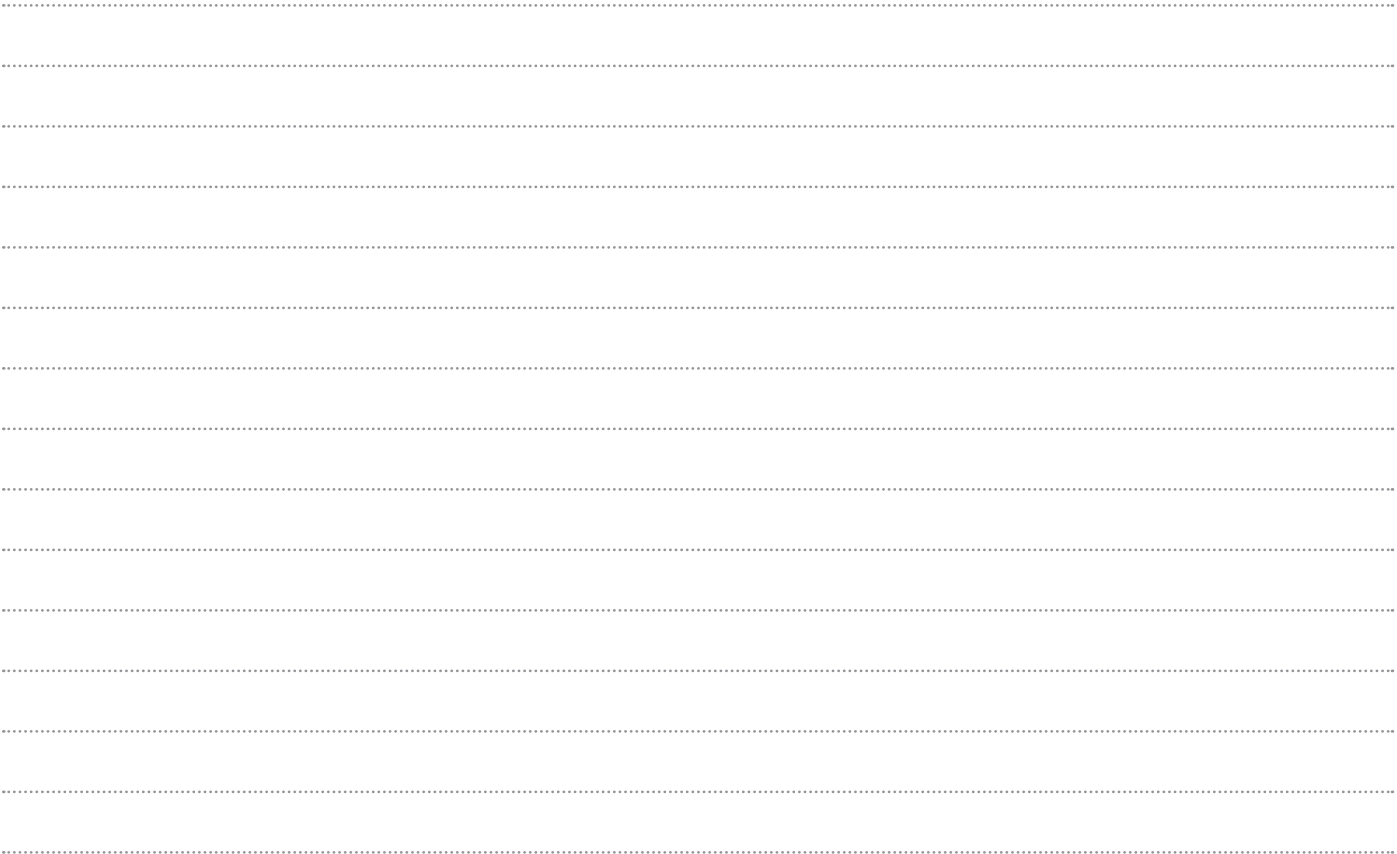
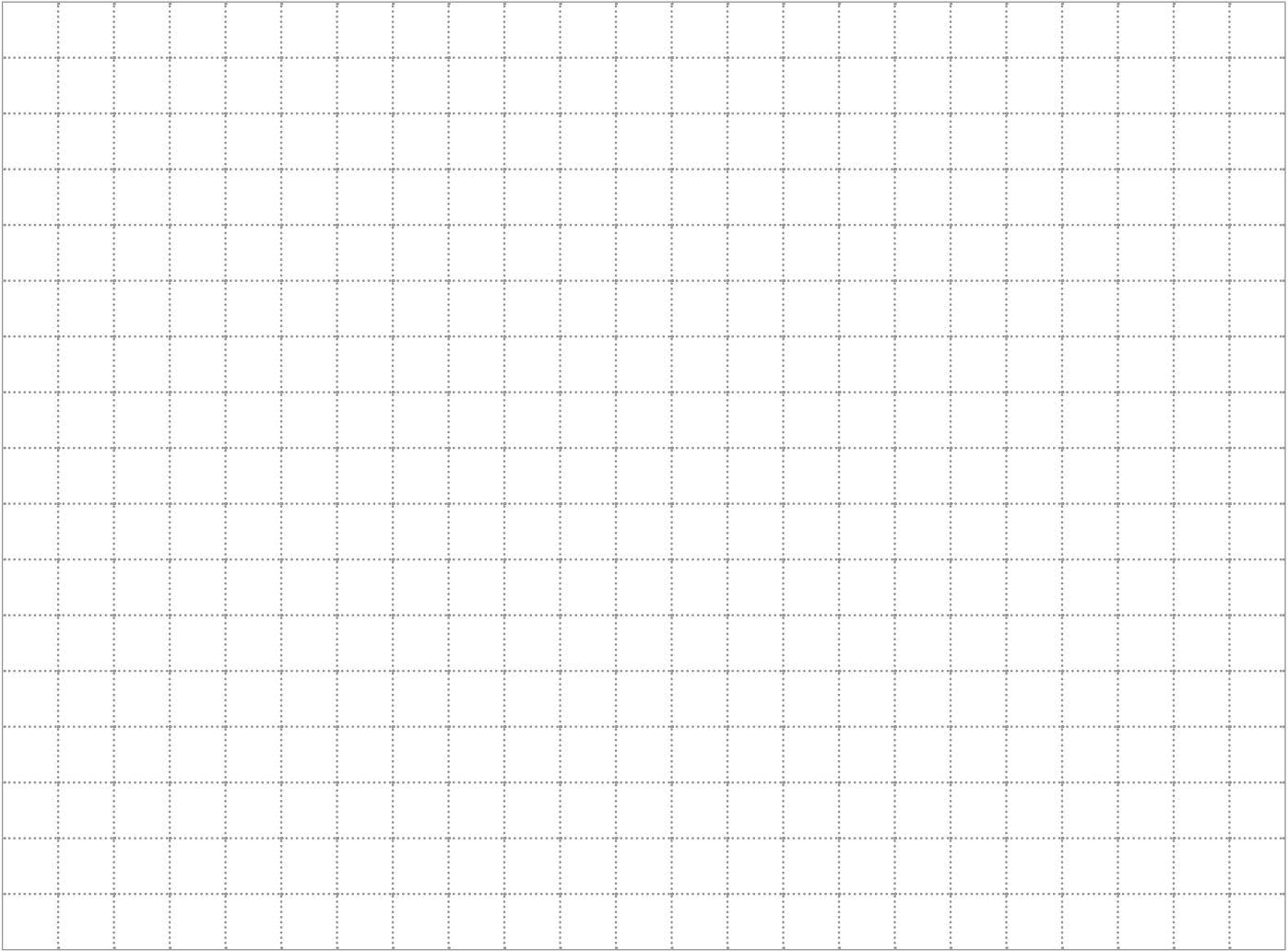
Two columns – both fixed

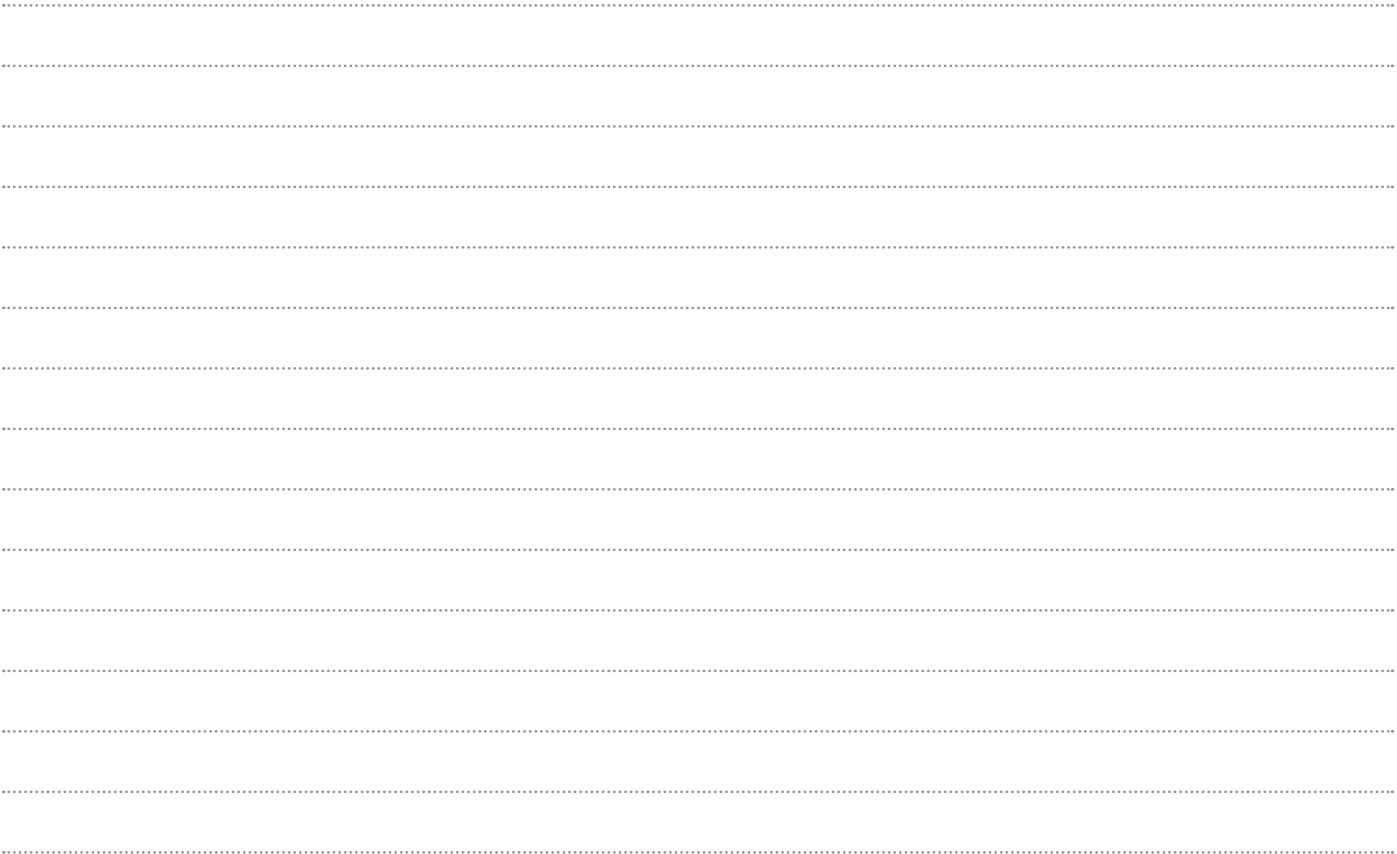
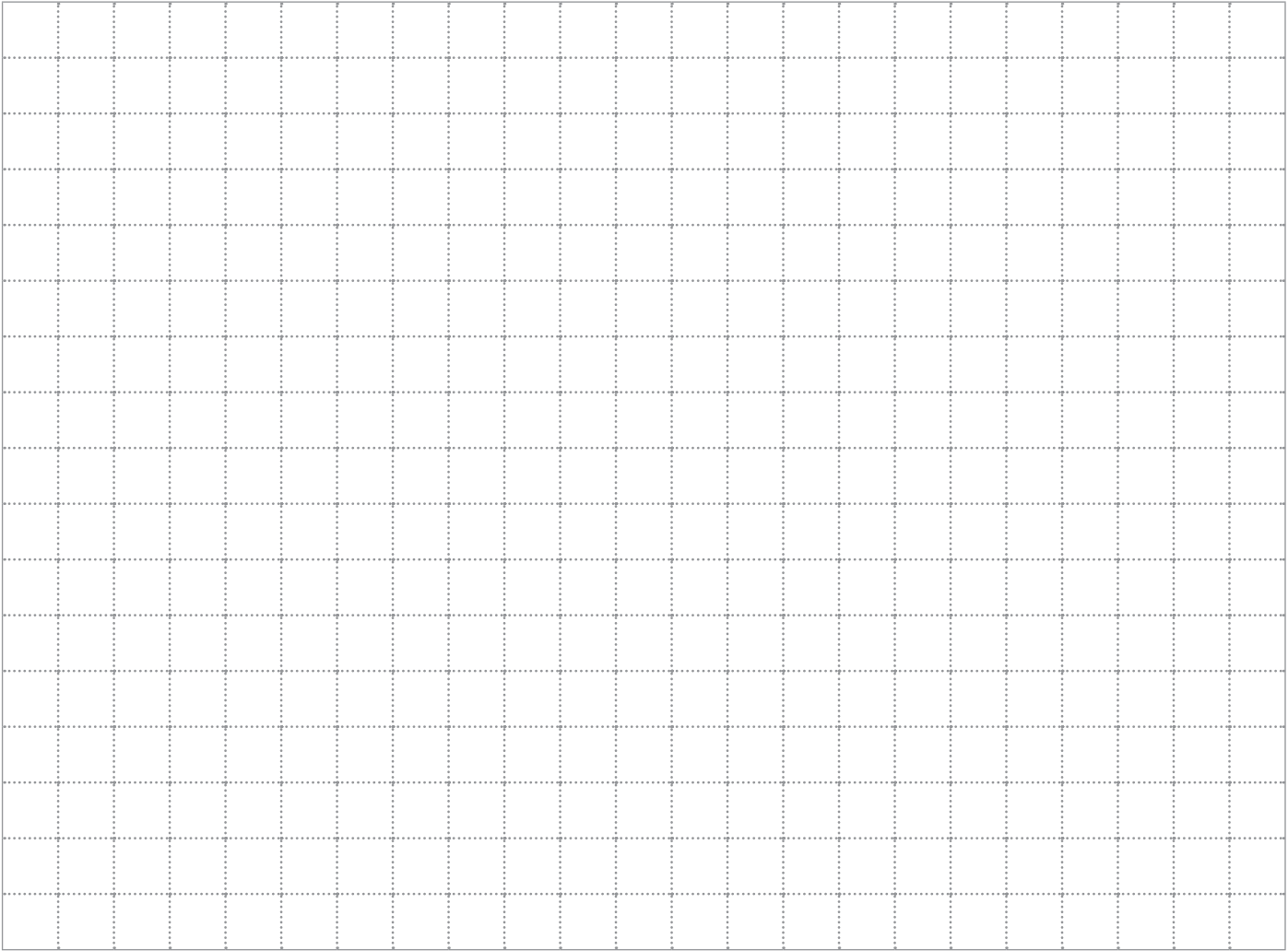
Two movable columns of which one must be fixed to the ground

One fixed column













FOR  
**WORKSHOP  
EQUIPMENT**  
IT'S **TOTALKARE**



**TOTALKARE**  
WORKSHOP EQUIPMENT EXPERTS

Block G1  
Dandy Bank Road  
Pensnett Trading Estate  
Kingswinford  
West Midlands  
DY67TD

Sales:  
0121 585 2724  
[sales@totalkare.co.uk](mailto:sales@totalkare.co.uk)

24hr service hotline:  
0121 585 2727  
[service@totalkare.co.uk](mailto:service@totalkare.co.uk)

