



## Our Vision

To be a global organisation recognised for its leadership in design, development, manufacture & distribution of product & services in exemplary working environments, manufacturing methods & quality systems which respect, nurture & grow our work force whilst at all times improving sustainability & reducing the impact on our environment.



## Our Mission

Our Mission is to service all areas of transport (Air - Rail - Road - Marine) & Agriculture. This mission is driven by our core values of honesty & integrity. Our businesses will focus on global vehicular, rail & marine requirements across every and all segments of Industry.

Our business growth will be derived from investments in research & development, lean manufacturing methods, automation & advanced manufacturing equipment & cutting-edge Information Technology.

We will always be committed to finding the best people to ensure we meet this mission.

# COMMERCIAL VEHICLE COMPONENTS

## Our Product Categories



### AIR BRAKE

- Air brake fittings
- Air chamber brackets
- Diaphragms
- Linkage kits
- Slack adjusters
- Brake caliper components & repair kits

### ANTI-VIBRATION

- Beam end bushes
- Cabin suspension bushes
- Engine & Cabin mounts
- Spring eye bushes
- Suspension bushes
- Load cushions
- V Rod & Torque rod bushes

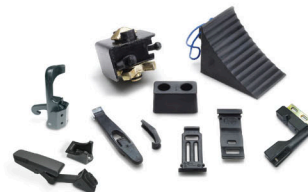


### AXLE

- Axle end nuts & kits
- Bearings & repair kits
- Brake & camshaft repair kits
- Dust covers
- Hub assemblies
- Hub caps
- Oil & grease seals
- Wheel fixings

### BODY

- Container locks
- Docking bumpers
- Hood Latches
- Mud wing straps
- Mud flaps
- Wheel chocks
- Mud wing brackets
- Trailer safety



### CABIN

- Cabin brackets
- Cabin mount bushes
- Cabin mount repair kits
- Cabin torque rods
- Rebound brackets
- Shifter boots



### DRIVELINE

- Center joint bearings
- Strap & bolt kits
- Yokes



### EXHAUST

- Clamps
- Hoses
- Elbows



### ENGINE & TRANSMISSION

- Clutch fork repair kits
- Stub lever housings
- Water pumps

### FIFTH WHEEL & DRAW BAR

- Foot pin kits
- Fifth wheel repair kits
- King pins
- Tow-bars
- Wear pads
- Trailer security devices
- Draw bar eyes



### STEERING

- Drag links
- King pin repair kits
- Steering knuckles
- Tie rod ends

### SUSPENSION

- Bogie suspension components
- Chassis brackets
- Control arms
- Equalizers
- Spring pin bushes
- Spring shackles, Side bars
- Torque rods
- U bolts, Wear pads



### INTERMODAL

- Cover plates
- Landing gear components
- Latch, pin locks
- Mud flap brackets
- Twist lock assemblies
- Twist lock pins

### PU COMPONENTS

- Beam end & pivot bushes
- Cabin mount bushes
- Equalizer bushes & kits
- Exhaust bushes & mounting kits
- Insulator pads
- Isolator bushes & kits
- Shock absorber bushes
- Spring eye bushes
- Torque rod bushes



### LUBRICANTS

- EP2 grease
- Lithium grease
- General Purpose grease







## MANSON'S INTERNATIONAL PVT. LTD.

### CORPORATE OFFICE:

#8, Garden Homes, St. Vincent De Paul Society,  
Khar Danda Road, Khar[W], Mumbai - 400 052,  
Maharashtra, India.

Tel.: +91 22 6924 6500

### GLOBAL OFFICES:

#### USA:

3111 Highway K, Sullivan, Missouri, 63080, USA  
☎ +1 (314) 210-6727

#### LATAM:

Carrera 90B # 42-38 sur, Bogota, 110881, Colombia  
☎ +57 310 5718259

#### Europe:

Bruchstraße 19A, Ennepe-Ruhr-Kreis, 58285, Germany  
☎ +49 151 51 728 728

#### South Africa:

139 Bergenzicht Estate, Carolina Road, Paarl - 7646,  
South Africa  
☎ +27 82 6511 757

#### Russia:

Vernadskogo prospect 44/1 4, Moscow, 119454, Russia  
☎ +79265347770

website: [www.mansons.in](http://www.mansons.in)

e-mail: [sales@mansons.in](mailto:sales@mansons.in)

## About Us



Pvt. Ltd. Company,  
Family Owned



71 Consecutive Years  
Of Profitability



CRISIL - BBB /  
Stable Rating



Exports to 120 Countries  
Globally



Business  
Units



Personnel



Manufacturing  
Locations



Global Offices

## Our Manufacturing Expertise

Our core business is development, validation, manufacturing & distribution of commercial vehicle components for OEM, OES & the independent aftermarket.



Cast Components



Forged Components



Machined & Heat  
Treated Components



NVH Components



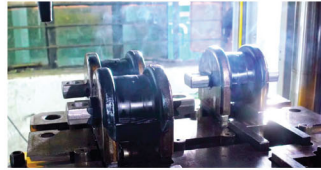
Sheet Metal Fabricated  
Components



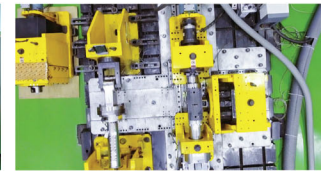
PU Components



## Manufacturing Facilities



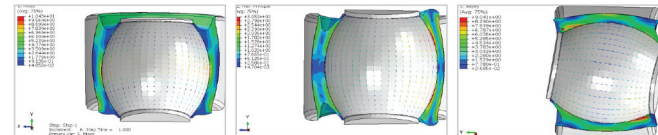
## Testing & Validation Facilities



### Full dynamic lab

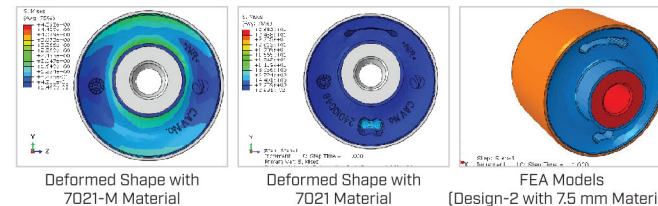
- DTL1 = 4 axis 250 KN (x4) dynamic test bench
- DTL2 = 1 axis 100 KN (x1) dynamic test bench

## Advance FEA Analysis Capabilities

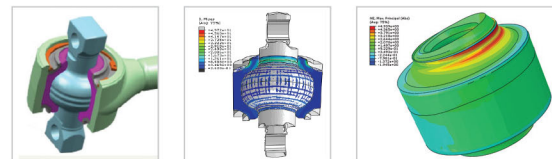


Stress & Strain Distribution in Axial, Radial & Conical Mode

## Load Road FEA Analysis



## Advance FEA Analysis For Rear Axle Control



## Packaging



Our packing is vibrant, robust and is a closer reflection of our exciting brand.

Our secondary boxes are bright and colourful & carry the primary brand colours which convey the high-quality and precision-crafted product they protect.

Our shipping crates have been matched to reflect this new packaging to provide you with a more durable and secure shipping experience, ensuring that your components arrive in optimal condition.

## Quality Management Strengths

- Mature product development system
- Print to part traceability for every component developed & produced.
- Dedicated & specific 'QMS' Team capable of managing multiple 'OEM product engagements' at any given time.
- Dedicated laboratories for raw materials testing & compound development & validation.

## International Quality Standards

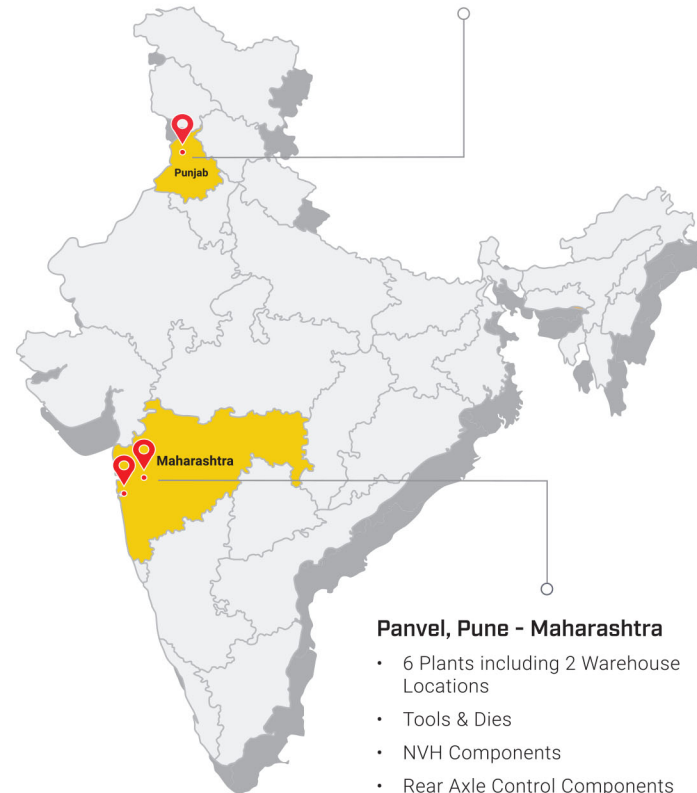
- ISO 9001:2015
- IATF 16949:2016



## Our Manufacturing Units

### Ludhiana, Punjab

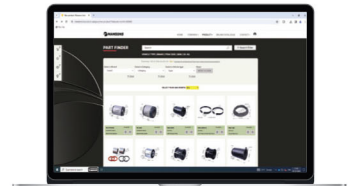
- 1 Plant
- Producing, Forging, Casting & Machining Components



### Panvel, Pune - Maharashtra

- 6 Plants including 2 Warehouse Locations
- Tools & Dies
- NVH Components
- Rear Axle Control Components
- Sheet Metal Fabrications

## New Website & Mobile Application



- User-Centric Design
- Interactive Elements
- Personalization

- Cutting-Edge Technology
- Seamless Integration
- Engaging Multimedia