



**sparco**  
Corsa

**2024**

# **CAR TOOLS**



# DISCOVER OUR *LATEST* COLLECTION







## **WHEEL COVERS**



**04**



## **AIR COMPRESSORS**



**10**



## **BATTERY CHARGER**



**15**



## **TOOLS**



**17**



## **FUEL ADDITIVES**



**25**



## **HEAD LIGHTS**



**26**





# WHEEL COVERS



ABS

14"  
15"/16"

UNIVERSAL

QUICK  
INSTALLATIONMADE IN  
EU

## MILANO **NEW**

- Material: ABS.
- Universal.
- Rust proof and corrosion resistant.
- Easy push-on installation with maximum grip of retention ring.
- Compatible with all vehicles.
- 4 pieces.
- Dimensions: 14", 15", 16.



### BLACK/SILVER

14" SPC1483BKS<sub>V</sub> 15" SPC1583BKS<sub>V</sub> 16" SPC1683BKS<sub>V</sub>

### SILVER

14" SPC1483SV  
15" SPC1583SV  
16" SPC1683SV

### GREY

14" SPC1483GR  
15" SPC1583GR  
16" SPC1683GR

### BLACK

14" SPC1483BK  
15" SPC1583BK  
16" SPC1683BK

### GERY/SILVER

14" SPC1483GRSV  
15" SPC1583GRSV  
16" SPC1683GRSV

### BLACK/GREY

14" SPC1483BKGR  
15" SPC1583BKGR  
16" SPC1683BKGR



# NAGOYA **NEW**

- Rust proof and corrosion resistant.
- Easy push-on installation with maximum grip of retention ring.
- Compatible with all vehicles.
- Dimensions: 13", 14", 15".
- Material: ABS.



ABS



13"  
14"/15"



UNIVERSAL



QUICK  
INSTALLATION



MADE IN  
TAIWAN



**BLACK/GREY**  
13" SPC1322BKGR  
14" SPC1422BKGR  
15" SPC1522BKGR



**BLACK/SILVER**  
13" SPC1322BKSV  
14" SPC1422BKSV  
15" SPC1522BKSV



**SILVER**  
13" SPC1322SV  
14" SPC1422SV  
15" SPC1522SV



**GREY**  
13" SPC1322GR  
14" SPC1422GR  
15" SPC1522GR



**BLACK**  
13" SPC1322BK  
14" SPC1422BK  
15" SPC1522BK



**GREY/SILVER**  
13" SPC1322GRSV  
14" SPC1422GRSV  
15" SPC1522GRSV



**WHEEL COVERS**





# PALERMO

- Material: ABS.
- Rust proof and corrosion resistant.
- Easy push-on installation with maximum grip of retention ring.
- Compatible with all vehicles.
- Dimensions: 13", 14", 15", 16".



ABS

13"/14"  
15"/16"

UNIVERSAL

QUICK  
INSTALLATIONMADE IN  
EU**BLACK**

13" SPC1397BK  
14" SPC1497BK  
15" SPC1597BK  
16" SPC1697BK

**SILVER/BLACK**

13" SPC1397SVBK  
14" SPC1497SVBK  
15" SPC1597SVBK  
16" SPC1697SVBK

**WHITE**

13" SPC1397WH  
14" SPC1497WH  
15" SPC1597WH  
16" SPC1697WH

# VARESE

- Material: ABS.
- Rust proof and corrosion resistant.
- Easy push-on installation with maximum grip of retention ring.
- Compatible with all vehicles.
- Dimensions: 14", 15", 16".



ABS

14"  
15"/16"

UNIVERSAL

QUICK  
INSTALLATIONMADE IN  
EU**SILVER/BLACK**

14" SPC1480SVBK  
15" SPC1580SVBK  
16" SPC1680SVBK

**BLACK**

14" SPC1480BK  
15" SPC1580BK  
16" SPC1680BK

**SILVER**

14" SPC1480SV  
15" SPC1580SV  
16" SPC1680SV

**GOLD/BLACK**

14" SPC1480GDBK  
15" SPC1580GDBK  
16" SPC1680GDBK



# BERGAMO

- Material: ABS.
- Rust proof and corrosion resistant.
- Easy push-on installation with maximum grip of retention ring.
- Compatible with all vehicles.
- Dimensions: 14", 15", 16".



ABS



14"  
15"/16"



UNIVERSAL



QUICK  
INSTALLATION



MADE IN  
EU



## SILVER/BLACK

14" SPC1485SVBK  
15" SPC1585SVBK  
16" SPC1685SVBK



## BLACK/SILVER

14" SPC1485BKSV  
15" SPC1585BKSV  
16" SPC1685BKSV



## BLACK/GREY

14" SPC1485BKGR  
15" SPC1585BKGR  
16" SPC1685BKGR



## BLACK

14" SPC1485BK  
15" SPC1585BK  
16" SPC1685BK



## SILVER

14" SPC1485SV  
15" SPC1585SV  
16" SPC1685SV



## BLACK/RED

14" SPC1485BKRD  
15" SPC1585BKRD  
16" SPC1685BKRD

## BEST SELLER

# ROMA

- Material: ABS.
- Rust proof and corrosion resistant.
- Easy push-on installation with

- maximum grip of retention ring.
- Compatible with all vehicles.
- Dimensions: 13", 14", 15", 16".



ABS



13"/14"  
15"/16"



UNIVERSAL



QUICK  
INSTALLATION



MADE IN  
EU



## SILVER/BLACK

13" SPC1396SVBK  
14" SPC1496SVBK  
15" SPC1596SVBK  
16" SPC1696SVBK



## GREY/BLACK

13" SPC1396GRBK  
14" SPC1496GRBK  
15" SPC1596GRBK  
16" SPC1696GRBK



## SILVER/GREY

13" SPC1396SVGR  
14" SPC1496SVGR  
15" SPC1596SVGR  
16" SPC1696SVGR



## BLACK

13" SPC1396BK  
14" SPC1496BK  
15" SPC1596BK  
16" SPC1696BK



## GREY

13" SPC1396GR  
14" SPC1496GR  
15" SPC1596GR  
16" SPC1696GR



## SILVER

13" SPC1396SV  
14" SPC1496SV  
15" SPC1596SV  
16" SPC1696SV



WHEEL COVERS

**BEST SELLER**

# SICILIA

- Material: ABS.
- Rust proof and corrosion resistant.
- Easy push-on installation with

- maximum grip of retention ring.
- Compatible with all vehicles.
- Dimensions: 13", 14", 15", 16".



ABS

13"/14"  
15"/16"

UNIVERSAL

QUICK  
INSTALLATIONMADE IN  
EU**SILVER/BLACK**

- 13" SPC1373SVBK  
14" SPC1473SVBK  
15" SPC1573SVBK  
16" SPC1673SVBK

**BLACK/SILVER**

- 13" SPC1373BKSV  
14" SPC1473BKSV  
15" SPC1573BKSV  
16" SPC1673BKSV

**SILVER/GREY**

- 13" SPC1373SVGR  
14" SPC1473SVGR  
15" SPC1573SVGR  
16" SPC1673SVGR

**BLACK**

- 13" SPC1370BK  
14" SPC1470BK  
15" SPC1570BK  
16" SPC1670BK

**GREY**

- 13" SPC1370GR  
14" SPC1470GR  
15" SPC1570GR  
16" SPC1670GR

**SILVER**

- 13" SPC1370SV  
14" SPC1470SV  
15" SPC1570SV  
16" SPC1670SV

# SICILIA CARBON

- Material: ABS.
- Rust proof and corrosion resistant.
- Easy push-on installation with maximum grip of retention ring.
- Compatible with all vehicles.
- Dimensions: 13", 14", 15", 16".



ABS

13"/14"  
15"/16"

UNIVERSAL

QUICK  
INSTALLATIONMADE IN  
EU**SILVER CARBON/BLACK**

- 13" SPC1375SVBKC  
14" SPC1475SVBKC  
15" SPC1575SVBKC  
16" SPC1675SVBKC

**SILVER CARBON/GREY**

- 13" SPC1375SVGRC  
14" SPC1475SVGRC  
15" SPC1575SVGRC  
16" SPC1675SVGRC

**BLACK CARBON/SILVER**

- 13" SPC1375BKSVK  
14" SPC1475BKSVK  
15" SPC1575BKSVK  
16" SPC1675BKSVK

**BLACK**

- 13" SPC1375BKC  
14" SPC1475BKC  
15" SPC1575BKC  
16" SPC1675BKC

**GREY CARBON**

- 13" SPC1374GRC  
14" SPC1474GRC  
15" SPC1574GRC  
16" SPC1674GRC

**SILVER CARBON**

- 13" SPC1374SVC  
14" SPC1474SVC  
15" SPC1574SVC  
16" SPC1674SVC



# TREVISO

- Material: ABS.
- Rust proof and corrosion resistant.
- Easy push-on installation with maximum grip of retention ring.
- Compatible with all vehicles.
- Dimensions: 13", 14", 15", 16", 17".



ABS



13"/14"  
15"/16"/17"



UNIVERSAL



QUICK  
INSTALLATION



MADE IN  
EU



## BLACK/SILVER

- 13" SPC1393BKSV
- 14" SPC1493BKSV
- 15" SPC1593BKSV
- 16" SPC1693BKSV
- 17" SPC1793BKSV



## BLACK/GREY

- 13" SPC1393BKGR
- 14" SPC1493BKGR
- 15" SPC1593BKGR
- 16" SPC1693BKGR
- 17" SPC1793BKGR



## GREY/SILVER

- 13" SPC1393GRSV
- 14" SPC1493GRSV
- 15" SPC1593GRSV
- 16" SPC1693GRSV
- 17" SPC1793GRSV



## BLACK

- 13" SPC1393BK
- 14" SPC1493BK
- 15" SPC1593BK
- 16" SPC1693BK
- 17" SPC1793BK



## GREY

- 13" SPC1393GR
- 14" SPC1493GR
- 15" SPC1593GR
- 16" SPC1693GR
- 17" SPC1793GR



## SILVER

- 13" SPC1393SV
- 14" SPC1493SV
- 15" SPC1593SV
- 16" SPC1693SV
- 17" SPC1793SV

## BEST SELLER

# LAZIO

- Material: ABS.
- Rust proof and corrosion resistant.
- Easy push-on installation with

- maximum grip of retention ring.
- Compatible with all vehicles.
- Dimensions: 13", 14", 15", 16".



ABS



13"/14"  
15"/16"



UNIVERSAL



QUICK  
INSTALLATION



MADE IN  
EU



## BLACK/SILVER

- 13" SPC1391BKSV
- 14" SPC1491BKSV
- 15" SPC1591BKSV
- 16" SPC1691BKSV



## GREY/BLACK

- 13" SPC1396GRBK
- 14" SPC1496GRBK
- 15" SPC1596GRBK
- 16" SPC1696GRBK



## GREY/SILVER

- 13" SPC1391GRSV
- 14" SPC1491GRSV
- 15" SPC1591GRSV
- 16" SPC1691GRSV



## BLACK

- 13" SPC1390BK
- 14" SPC1490BK
- 15" SPC1590BK
- 16" SPC1690BK



## GREY

- 13" SPC1390GR
- 14" SPC1490GR
- 15" SPC1590GR
- 16" SPC1690GR



## SILVER

- 13" SPC1390SV
- 14" SPC1490SV
- 15" SPC1590SV
- 16" SPC1690SV



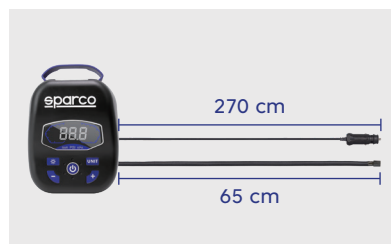
WHEEL COVERS



# AIR COMPRESSORS

## SPT182 **NEW**

- Accurately and automatically stop.
- No need to keep an eye on the tire pressure gauge.
- Pure copper coil motor, improve performance, reduce energy consumption and make the air pump more stable.
- A multi-purpose machine: In suitable for car/suv/commercial vehicles at the same time. Can also be used for motorcycle/bike/lifebuoy/ball etc use.
- Anti-skid handle.
- Compact and handy for easy to carry and travel.
- Cylinder and motor: 1×30 mm.
- Digital display.
- Max. Pressure: 100psi.
- Electricity: 10A.
- Rating power: 120W.
- Inflate a normal tire: 5 min.
- Working voltage: DC 12V.



TYRE  
INFLATION



DIGITAL  
GAUGE



SUITABLE  
FOR BIKES



SUITABLE  
FOR CARS



SUITABLE  
FOR  
STEAMBOAT



SUITABLE  
FOR BALLS



LED LIGHT



**BEST SELLER**

# AIR COMPRESSOR + TIRE PRESSURE GAUGE SPT160

- Voltage: DC 12V.
- 1x 30mm metal cylinder.
- Max power: 100psi.
- Electricity: 10A.
- Inflatable air: ≥ 30L.
- Digital gauge.
- 9 pcs LED lights.
- Length of the cable: 3m.
- Length of hose: 70 cm.
- Accessories: 3x nozzles adaptors for inflating bikes, tires, balls, etc.
- 1x 10A fuse. 4x valve caps.
- Include one tire gauge.

## AIR COMPRESSOR

- Fast inflating. 4-5 minutes to inflate a normal car tire.
- Quickly inflates auto, motorcycle, vehicle and bicycle tires.
- Convenient and easy to use, a built-in storage space for 12V power cord and air hose.
- Automatically shut off feature make you never over-inflate.
- Material: High quality ABS.
- Dimensions: 17.5 x 20.5 x 12.8 cm.

## TIRE PRESSURE GAUGE

- Built-in LED light and red sharp-flash emergency light.
- A storage space for Sparco Mr. Pilot tire gauge.
- Material: High quality ABS.
- Dimensions: 8.7 x 5.1 x 5.3 cm.



TIRE PRESSURE  
GAUGE



TYRE  
INFLATION



DIGITAL  
GAUGE



SUITABLE  
FOR BIKES



SUITABLE  
FOR CARS



SUITABLE  
FOR  
STEAMBOAT



SUITABLE  
FOR BALLS



LED LIGHT



AIR COMPRESSORS



# PORTABLE INFLATOR

SPT806

NEW

- Accurately and automatically stop.
- No need to keep an eye on the tire pressure gauge.
- Multifunctional use suitable for various environments.
- Compact and handy for easy to carry and travel.
- Professional built-in safety with overcurrent, overvoltage, and overcharge protection while you are enjoying the inflation process.
- Voltage: 7.4V.
- Power: 70W.
- Battery Capacity: 2500mAh
- Electricity: 9A.
- Max. Pressure: 100Psi.
- Charging Time: <5h.
- 7.5 minutes to inflate a 195/R65 tire.



Effectively  
Doubles as a  
Phone Charger



TYRE  
INFLATION



DIGITAL  
GAUGE



SUITABLE  
FOR BIKES



SUITABLE  
FOR CARS



SUITABLE  
FOR  
STEAMBOAT



SUITABLE  
FOR BALLS



LED LIGHT



**BEST SELLER**

# CORDLESS INFLATOR

SPT173

- Carry 2600mAh li-ion battery in full battery capacity can inflate 2 pcs195/55R15" tyre.
- 3 switchable units.
- Comfortable grip.
- Easy to carry.
- Dimensions: 14.9 x 7.3 x 4.4 cm.



3 nozzles



**Strong Power  
High Capacity**

**Large Digital  
LCD Display**  
Simultaneous  
Display of Preset  
Pressures Values.  
3 Switchable Units.  
5 Switchable Modes.



3 UNITS



5 MODES



EASY TO USE



LED LIGHT



PHONE  
CHARGER



**AIR COMPRESSORS**



**BEST SELLER**

# DC 12V TIRE INFLATOR

SPT163

- Fast inflation - Can inflate a 195/55R15" car tyre from 0 to 35 psi < 5 minutes.
- Non-Stop Working time under pressure of 30 psi > 30 minutes.
- Easy use - Single button operation. Simply switch ON to begin inflation and OFF when inflation is complete.
- Powered from your vehicle - Plugs straight into your cigarette lighter (12V DC socket) fitted with a 300+/- 10 cm power cord & flexible air hose 50 +/- 1.9cm.
- Simple Storage - Small and compact, the cable and hose clip onto the unit - making for easy storage.
- Max Current: < 10 A.
- Max Power: 120 W.
- Extras: Digital Gauge, Night-time illumination, SOS Alarm light & 2 pcs valve adaptors for bicycle tyres and balls.
- Material: High quality ABS.
- CE & RoHS Certified.
- Dimensions: 8.7 x 5.1 x 5.3 cm.



TYRE  
INFLATION



DIGITAL  
GAUGE



SUITABLE  
FOR BIKES



SUITABLE  
FOR CARS



SUITABLE  
FOR  
STEAMBOAT



SUITABLE  
FOR BALLS



SUITABLE  
FOR CARS



LED LIGHT



# BATTERY CHARGERS



BATTERY CHARGERS

## INTELLIGENT CAR & MOTORCYCLE SMART CHARGER SPT500

- Ultra compact design.
- 6 or 12 volt.
- Battery capacity: 3 -120 Ah.
- Multi-Electric secured.
- Intuitive LED lights.
- Material: ABS.
- Dimensions: 15.5 x 6.9 x 4.4 cm.

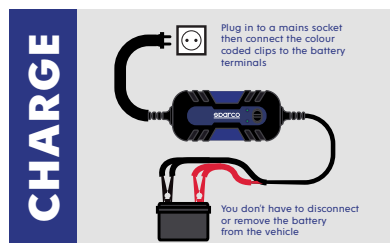
The battery chargers to be connected to the battery and then you can choose between 6 or 12 volt.

Battery capacity: 3-120 Ah. For your safety the car battery is Multi-Electric secured against Overload (reverse polarity protection, over-heat protection, overload protection, short circuit protection).

Intuitive LED lights provide a visual outline of the charging status, safe and general battery status.

Design with ultra compact, portable and amazingly light.

This product offers external attachment holes, to prevent slipping.



VOLTAGE



AUTOMATIC CHARGING



MULTIPLE CHARGING CHARACTERISTICS



SUITABLE FOR MOTORCYCLES



SUITABLE FOR CARS



SUITABLE FOR CARS



# SMART BATTERY CHARGER

SPT502

- Battery Voltage: 12V.
- Charging current: 4A.
- Charging type: 10-steps, fully automatic charging cycle.
- Lead acid and 12V lithium battery charger.
- Power: 70W.
- Winter/AGM mode.
- Battery Capacity: 3-120 Ah.
- Insulation Class: IP65.
- Ambient Temperature: -20°C to +40°C.
- Safety Protection: Reverse polarity/ Overheat/Short Circuit/Low voltage/ Overcharge.
- 12V M, small charging current mainly suitable for small capacity (4-20Ah) batteries or old batteries need maintenance.
- It can retain memory & data when replacing a battery.
- RECOND: special program to deeply discharged battery.
- Available for charging 12V battery as low as 3V.
- Dimensions: 19 x 8.5 x 5.2 cm.

LITHIUM  
BATTERY

VOLTAGE

AUTOMATIC  
CHARGING4 AMP.  
MAX.

IP CODE

RECONDITION &  
POWER SUPPLY  
MODE

## JUMP STARTER

SPT807/808

NEW

### SPT807

- Capacity: 11.1V / 1800mAh (19.98Wh)
- Cranking Current: 12V=300A
- Peak Current: 12V=600A\*
- USB-C Input : 5V=2A
- USB-A Output : 5V=2A
- Discharge Temp.: -4°F to 113°F (-20°C to 45°C)
- Charge Temp.: 32°F to 104°F (0°C to 40°C)

### SPT808

- Capacity: 14.8V / 2500mAh (37Wh)
- Cranking Current: 12V=1000A
- Peak Current: 12V=2000A\*
- USB-C Input: 18W Max (5V=3A, 9V=2A, 12V=1.5A)
- USB-C PD Output: 30W Max (5V=3A, 9V=2A, 12V=2.5A)
- USB-A Output: 12.5W Max (5V=2.5A)
- DC Output: 12V-16.8V, 8A Max
- Discharge Temp.: -4°F to 113°F (-20°C to 45°C)
- Charge Temp.: 32°F to 104°F (0°C to 40°C)



SPT807

SPT808



SUITE  
FOR CARS



TRUCKS



MOTORCYCLES



SNOW MOTO



BOATS



PHONE



TABLET



VIDEO  
GAME



CAMERA



LIGHT



**BEST SELLER**

# JUMP STARTER

SPT804

- Battery: 8000mAh
- Battery Type: Lithium-ion
- Battery Life Cycle: 1000+
- USB-C Input Port: 10W Max. (5V / 2A)

- 12V Cigarette Lighter Adapter
- USB-A Output 1 & 2: 16W Max. (5V / 3.2A)
- DC Output: 96W Max (12V / 8A)

**8.000**  
mAh  
Power

**7.000<sup>cc</sup>**  
Engine  
Gasoline

**5.500<sup>cc</sup>**  
Engine  
Diesel

SUITABLE  
FOR CARS

TRUCKS



MOTORCYCLES



SNOW MOTO



BOATS



PHONE



TABLET

VIDEO  
GAME

CAMERA



LIGHT

**BEST SELLER**

## BOOSTER CABLE

SPT801

- Heavy duty terminal clamps.
- Surge protection 12V/24V battery/application.
- Copper clamp bridge.
- Suits 4 to 8 cylinder diesel & petrol engines.
- 2.5M PVC cable x dia. 9 mm.
- CCA (Copper Clad Aluminium) wires.
- Dimensions of clamp: 17 x 10 x 2.2 cm.



CARS



VANS



TRUCKS



POWER



DIAMETER



CABLE LENGTH

**BEST SELLER**

## HEAVY DUTY BOOSTER CABLE

SPT800

- Extra heavy duty terminal clamps.
- Surge protection. 12V/24V battery/application.
- Copper clamp bridge.
- Suits 4 to 8 cylinder diesel & petrol engines.
- 6M PVC cable x dia. 10 mm.
- CCA (Copper Clad Aluminium) wires.
- Dimensions of clamp: 17 x 10 x 2.2 cm.



SPORTS CARS



CARS



SUVS



POWER



DIAMETER



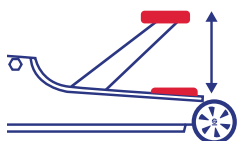
CABLE LENGTH



# HYDRAULIC FLOOR JACK 2.5T

SPT178

- Capacity: 2.5 Tons.
- Min height: 85 mm.
- Max height: 385 mm.
- Net weight: 12.5kg (with blow case 13.5kg).
- Unique overload protection safety valve.
- Low profile design.
- 2 heavy duty rear swivel casters for easy transporting.

**2.5 Tons**HEIGHT  
85-385 mmErgonomic  
HandleSoft  
Grip

EASY TO USE



2.5 TONS



85-385MM



WEIGHT



CARS



VANS

SPORTS  
CARS

SUVS



# BUFFER POLISHER

SPC120

- Material: ABS.
- Long Battery life allows users to wax their cars at one go.
- Three Levels of Speed.
- A powerful motor with stable performance offers efficient waxing and smooth polishing.
- No-load speed: 5000r/min.



ABS



3 MODES



LOW NOISE



4000R/MIN  
±200MAX



60+MINUTES OF  
BATTERY LIFE



AN ECCENTRIC  
ROTATING SHAFT



TOOLS



# STEERING WHEEL LOCK

SPT180



EASY TO USE



UNIVERSAL



QUICK  
INSTALLATION

- Keep your vehicle safe.
- Strong braided steel & pvc coating.
- Universal use in most vehicles.
- Easy to get car security.



**BLUE**  
SPT180BL



**BLACK**  
SPT180BK



# SPARE TIRE SECURITY LOCK

SPT181



140 CM



EASY TO USE



UNIVERSAL



PROTECTING  
FROM ATTACKS

- Steel padlock.
- Hardened steel chain.
- High resistance to cutting with locking plier.
- Arc Guard: Protecting from attacks.
- Body and shackle made of special hardened steel.
- Cylinder for high precision points of key.
- Anti-drill protection: protected against drills and crowbars.



**BLACK**  
SPT181BK



**BLUE**  
SPT181BL



TOOLS





# EMERGENCY HAMMER

SPT166

- Hammer: Emergency hammer for breaking glass.
- Belt Cutter: Comes with a safety belt cutter for rapid and safe escape during emergency scenarios.
- 8 Screwdrivers (3.5mm slotted, 4.5mm slotted, 52mm slotted, #0 Philips, #1 Philips, #2 Philips, mini slotted & Philips).
- Safety Light: 0.75W single LED with a brightness of up to 30 lumens, 100m working distance.
- Power: 3xAAA (not included).
- CE & RoHS certified.
- Dimensions: 15.7 x 7.5 x 5cm.

SAFETY  
LIGHT

HAMMER

8 SCREW-  
DRIVERS

# DC 12V TIRE GAUGE

SPT159

- Support 4 measurements: PSI, Bar, Kpa, Kg/cm.
- LED display accurate to  $\pm 1\%$ .
- Small size easy carry on.
- Powered by 2x LR44 1.5V batteries (included).
- LED screen auto off after 30 seconds inactivity to save battery.
- Material: High quality ABS material with UV coating to prevent scratch.
- Dimensions: 8.7 x 5.1 x 5.3 cm.



ABS

LED  
DISPLAYSUITABLE  
FOR BIKESSUITABLE  
FOR CARS

# FUEL ADDITIVES



Catalogue



FUEL ADDITIVES



- **Gasoline Treatments:** Our new treatments are formulated to enhance fuel efficiency, reduce emissions, and safeguard your engine from wear and tear while preventing harmful deposits in your fuel system that can lead to engine damage over time.
- **Injector Cleaner:** This powerful formula removes dirt, grime, and contaminants from fuel injectors, enhancing engine performance, fuel efficiency, and emission reduction.
- **Anti-Smoke Diesel:** Specifically designed for diesel engines, this formula reduces smoke emissions, improves fuel efficiency, and protects your engine from wear and tear, preventing harmful deposits in the fuel system.
- **Diesel Particle Cleaner:** Highly effective in removing soot and particles from your engine, this formula enhances engine performance, fuel efficiency, and emission reduction.
- **Leak Stopper Oil Treatment:** Address oil leaks with our effective treatment designed to halt current leaks and prevent future ones, safeguarding your engine and prolonging its lifespan.
- **Leak Filler System:** Easily repair leaks in your cooling system with our efficient solution, preventing coolant leaks that can lead to overheating and related issues.
- **Refrigerator Additive:** Maintain your refrigerator's efficiency with our additive, preventing ice and frost buildup that can cause damage and inefficiency.
- **Diesel Antifreeze Additive:** Safeguard your engine from freezing in cold temperatures with our antifreeze additive, preventing corrosion and damage caused by freezing conditions.



# HEAD LIGHTS

## REPLACEMENT LED BULBS

- Optimal thermal design ensures maximum cooling.
- Energy efficient use 1/5 of traditional bulbs.
- High power ultra bright.
- 360° all-directional light emitting.
- Adapt to variety of vehicles.
- Plug and Play direct replacement for standard bulbs.



SUPER BRIGHT  
LED LIGHT



50000+HRS  
LIFE SPAN



ENERGY  
EFFICIENT



360°  
ILLUMINATION



QUICK  
INSTALLATION

**ULTRA LONG LIFE**  
**SHOCK RESISTANT**  
**PRECISE LIGHT SOURCE**  
**LOW CURRENT DRAW**



**SPL120**  
T10W



**SPL121**  
T11X36W



**SPL123**  
T16W



**SPL125**  
7443W





# EXTREME XENON BULBS

- Blue xenon effect in the headlamp.
- 5.000K day light white color.
- Blue-capsule, acquire more fashionable white brightness, easily identify road object and traffic sign, safer and more comfortable driving.
- Extreme white light performance.

SPCB1401 H1	SPCB1407 HB4 (9006)
SPCB1402 H3	SPCB1408 HB5 (9007)
SPCB1403 H4	SPCB1409 HB3 (9005)
SPCB1404 H7	SPCB1410 H8
SPCB1405 H13	SPCB1411 H9
SPCB1406 HB1 (9004)	SPCB1412 H11



5000K  
WHITE



UNIVERSAL



QUICK  
INSTALLATION

# THUNDER BULBS

- Brighter, wider lights on the road.
- The glass is tinted blue to give an ice blue shine.
- 4.000K day light white color.
- Anti-dazzling.
- Straight light.
- UV-stop, reduce radiation, protect lighting fixture from aging.
- White light performance.
- ECE Certified: H1 E4-37R03 2WW, H3 E4-37R-03 2WW, H4 E4-37R-03 2WX, H7 E4-37R-03 2J3.

SPCB1201 H1	SPCB1207 HB4 (9006)
SPCB1202 H3	SPCB1209 HB3 (9005)
SPCB1203 H4	SPCB1210 H8
SPCB1204 H7	SPCB1211 H9
SPCB1205 H13	SPCB1212 H11



4000K  
WHITE



UNIVERSAL



QUICK  
INSTALLATION

# LONG LIFE BULBS

- Three times the lifetime of a standard halogen bulb.
- Ideal for use as a daytime running lamp due to its long life span.
- 3.000K day light amber color.
- Anti-dazzling.
- Straight light.
- UV-stop, reduce radiation, protect lighting fixture from aging.
- ECE Certified: H1 E4-37R03 2WW, H3 E4-37R-03 2WW, H4 E4-37R-03 2WX, H7 E4-37R-03 2J3.

SPCB1001 H1
SPCB1002 H3
SPCB1003 H4
SPCB1004 H7



4000K  
WHITE



UNIVERSAL



QUICK  
INSTALLATION



# ***FROM THE RACE TO THE ROAD***

**[www.sparco-corsa.com](http://www.sparco-corsa.com)**

Follow us on  
*Instagram*



**SPARCO\_CORSA**