



**sparco**  
eMobility

**2024**

# CATA LOGUE











## e-Scooters

---

In 2018, our team of experts embarked on a remarkable journey, developing and introducing the Sparco E-Scooter to the world. The launch of this innovative electric scooter was met with resounding success, captivating individuals who yearned for freedom and independence in their daily lives. With Sparco eMobility, we empower you to embrace the life you desire on your own terms, providing the perfect solution for your transportation needs. Say goodbye to limitations and hello to the exhilarating experience of riding the Sparco E-Scooter, where you can effortlessly navigate through the city streets, explore new horizons, and redefine your sense of freedom.







# MAX S2

e - s c o o t e r

+ info



**LARGE  
HANDLEBAR**

**EASY  
TO FOLD**

**RAPID  
CHARGING  
SYSTEM**

**Black**



**Blue**







## POWERFUL BATTERY

750W



## 3 RIDE MODES

Energy Saving,  
Standard,  
Sport



## ALARM + LOCK FUNCTION



## SMART APP

- Bluetooth
- Light Control
- Battery Level
- Milage
- 3 Ride Modes
- Alarm+Lock Function

## TECHNICAL DATA

<b>Dimensions</b>	Fold: 1155 x 455 x 575 mm Unfold: 1155 x 455 x 1195 mm	<b>Max. Slope</b>	20%
<b>N.W.</b>	20 kg / 22 kg	<b>Charging Duration</b>	4h / 5h
<b>Max. Payload</b>	120 kg	<b>Operating Temperature</b>	14~104°F (-10~40°C)
<b>Mileage</b>	up to 30 km / up to 45 km	<b>Storage Temperature</b>	-4~122°F (-20~50°C)
<b>Max. Speed</b>	25 km/h	<b>Traversable Terrain</b>	Asphalt/Flat pavement: obstacles < 0.4 in (1 cm); gaps < 1.2 in (3 cm)
<b>Body Frame</b>	Aluminum alloy proprietary frame	<b>Front Light</b>	1.1W built-in LED front light
<b>Suspension</b>	Dual front suspension	<b>Rear/Braking Light</b>	Dual LED rear light
<b>Dashboard</b>	LED dashboard	<b>Bell</b>	Integrated rotary bell
<b>Braking</b>	Front drum brake & Rear E-ABS	<b>Grip</b>	TPE integrated grips
<b>Tires</b>	10 inch shock-absorbing honeycomb PU tires	<b>Kickstand</b>	Left side kickstand
<b>Nominal Power</b>	350W	<b>Max. Charging Voltage</b>	42V DC
<b>Max. Power</b>	600W	<b>Nominal Capacity</b>	280Wh / 468Wh
<b>Battery</b>	7800mAh / 13000mAh	<b>Charging Temperature</b>	32~104°F (0~40°C)
<b>Nominal Voltage</b>	36V DC	<b>Battery Management System</b>	Over heating, over current, over charge, over discharge and short circuit protection
<b>Output Power</b>	84W / 126W	<b>Output Voltage</b>	42V DC
<b>Input Voltage</b>	100-240V ~ 50/60Hz	<b>Output Current</b>	2.0A / 3.0A
<b>IP Rating</b>	Whole Vehicle: IPX5 / Battery: IPX7	<b>Folding</b>	3-Sec Floding Mechanism
<b>Riding Modes</b>	Energy Saving / Standard / Sport	<b>Turn Signals</b>	YES
<b>Standards &amp; Certifications</b>	CE / ROHS		

# Helmet

NEW

SE303



## FEATURES

Introducing the exceptional features of the SPARCO Helmet, designed to complement our outstanding Scooter and enhance your safety on the streets. Crafted with a durable combination of EPS and PC hardshell, this helmet offers superior protection. With its secure nexus buckle, you can have peace of mind knowing it stays firmly in place. The helmet boasts a lightweight design, along with comfortable opening pads, ensuring unrestricted comfort and unobstructed vision. Designed for hot days, it features 16 air vents to keep you cool and refreshed. Rest assured, all our helmets are meticulously certified and rigorously tested to meet the stringent standards of the CE EN1078 Norm, as required by European law.



## SPEC

Material	PC and EPS (Expanded Polystyrene)
Size	M (55-59 cm), 330 g ± 10 g (With lenses)
Safety Standards	CE/EN1078 (EU)
Construction	In-Mold
Vents	16
Usage	Bike / Electric Scooter



## **Magnetic Goggles**

filtering strong light



**Flexible  
quick-  
release  
buckle  
makes  
wearing  
more stable**



**Quick  
release  
buckle for  
easy wearing**



**3 PC Shell,  
in-mold  
protection  
for safe  
riding**

**Highly  
Bright  
Taillight  
Makes  
Night  
Riding  
Safer**



**Trendy  
Includes  
Two Colors  
Black and Blue**



SE303BL

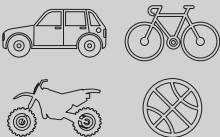


SE303BK

# Tire Inflator

NEW

SPT806



Elevate your tire maintenance with our cutting-edge Tire Inflator, designed for both precision and ease of use. With its intelligent auto-stop feature, monitoring tire pressure is hassle-free, eliminating the need to constantly check the gauge. This multifunctional tool is perfect for various settings, boasting a compact design that makes it ideal for on-the-go use. Equipped with advanced safety features like overcurrent, overvoltage, and overcharge protection, it ensures a worry-free inflation process. With a powerful 70W motor and a 2500mAh battery, it can inflate a 195/R65 tire in just 7.5 minutes, making it a must-have for every vehicle owner.



## SPEC

Voltage	7.4V
Power	70W
Battery Capacity	2500mAh
Electricity	9A
Max. Pressure	100Psi
Charger Time	< 5h
Inflation time	7.5 minutes to inflate a 195/R65 tire



# **Features an Automatic Shutoff**

**When Pressure Reaches the Preset Value**



**Provides Inflation Speeds of Up To 25% Faster**



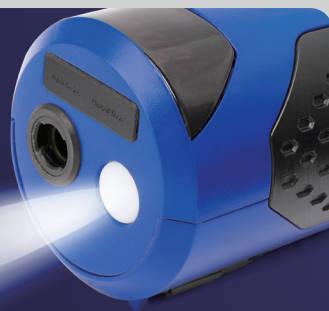
**Effectively Doubles as a Phone Charger**



**Compact and Lightweight for Easy Storage**



**Doubles As a Nightlight With Three Lighting Modes**





**Accessories**







# Helmet

SE302



## FEATURES

Introducing the exceptional features of the SPARCO Helmet, designed to complement our outstanding Scooter and enhance your safety on the streets. Crafted with a durable combination of EPS and PC hardshell, this helmet offers superior protection. With its secure nexus buckle, you can have peace of mind knowing it stays firmly in place. The helmet boasts a lightweight design, along with comfortable opening pads, ensuring unrestricted comfort and unobstructed vision. Designed for hot days, it features 14 air vents to keep you cool and refreshed. Rest assured, all our helmets are meticulously certified and rigorously tested to meet the stringent standards of the CE EN1078 Norm, as required by European law.



● SE302BL



● SE302BK



● SE302YL

## SPEC

<b>Material</b>	PC and EPS (Expanded Polystyrene)
<b>Size</b>	S (53-55 cm), 250 g M (55-58 cm), 258 g L (58-61 cm), 263 g
<b>Safety Standards</b>	CE/EN1078 (EU)
<b>Construction</b>	In-Mold
<b>Vents</b>	14
<b>Usage</b>	Bike / Electric Scooter



# Leisure Helmet

SE300



## FEATURES

Introducing the remarkable features of our sporty everyday helmet, meticulously designed to provide the perfect balance of safety, ventilation, and comfort. With its dynamic design, this helmet exudes a sporty and modern appeal. The excellent ventilation properties ensure a pleasant and comfortable wearing experience, even during rigorous activities. Rest assured, our helmet combines style, functionality, and optimal airflow to meet your highest expectations.



● SE300YL



● SE300BK



● SE300BL

## SPEC

<b>Material</b>	PC and EPS (Expanded Polystyrene)
<b>Size</b>	S (53-55 cm), 250 g M (55-58 cm), 260 g L (58-61 cm), 270 g
<b>Safty Standards</b>	CE/EN1078 (EU)
<b>Construction</b>	In-Mold
<b>Vents</b>	21
<b>Usage</b>	Bike / Electric Scooter

# Bags

## Bicycle And Scooter Top Tube Bag

SE100



- **EVA Material, Durable, Resistant To Deform.**
- **Adjustable Velcro, Easy to Install.**
- **Waterproof**, USB Interface.
- **Humanized Design.**  
Easy to put and take out things.
- **Large Capacity.**  
Suit for storage all your devices.



SE100BL

SE100GR

SE100YL

## Bicycle And Scooter Top Tube Bag

SE101



- **Premium Material.**  
Made of high-strength EVA with 3D die-casting process.
- **Large Storage Room & Compatibility Holds Cellphone.**  
Charger, power bank, bicycle repair tools, small tire pump...
- **Waterproof & Dual Zippers.**
- **Fastening With Triple Velcro.**



SE101BL

SE101GR

SE101YL

## Bicycle Waterproof Frame Bag

SE102



- **Waterproof IPX5.** Completely waterproof.
- **Easy clean** bag surface by wiping cloth.
- **The bag is supported by panels.**
- **Durable, waterproof**, waterproof zipper, portable, for pump.



SE102BL

SE102GR

SE102YL

## Bike Bag

SE103



- **Perfect for the cell phone size below 6.5 inch**
- **Sensitive TPU Touch Screen.**
- **High Capacity.** Store all your devices.
- **Waterproof & Dual Zippers.**
- **Little Sweet Design For Headphones Cables.**



SE103YL

SE103BL

SE103GR





## Bike Bag

SE104



- **Sensitive TPU Touch Screen.**
- **Water Resistance.** Waterproof material and zipper
- **Easy Installation.** Adjustable magic tape is cuttable.
- **Stable On Top Tube.**
- **Sun-Visor Design.**

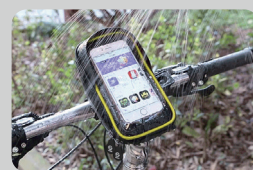


## Bicycle Bag

SE105



- **High Capacity.**  
For the cell phone size below 6.2 inch.
- **Sun Visor.**  
Protects about rain, dust, mud and sunlight.
- **Waterproof & Dual Zippers.**
- **Sensitive TPU Touch Screen.**



## Bicycle Handlebar Bag

SE106



- **360 Degree Rotate Adjustable Mount**
- **6.5" New Materials Protective PLM**
- **Water Resistant Pouch + Rubber Zipper + Sun Visor.**
- **Designed for cell phone size below 6.5 inch.**
- **Universal Bike Handlebar Bag.**
- **Easy To Install And Remove.**



## Bicycle And Scooter Handlebar Bag

SE107



- **Universal Bike Handlebar Bag.**
- **360 Degree Rotate Adjustable Mount + 6.5" New Materials Protective PLM**
- **Designed for cell phone size below 6.5 inch.**



## Bicycle And Scooter Handlebar Bag

SE108



- **EVA Material, Durable, Resistant To Deform.**
- **Adjustable Velcro,** Easy to Install.
- **Humanized Design.** Easy to put and take out things.
- **Large Capacity.** Suit for storage all your devices.
- **Waterproof.**



SE108YL



SE108BL



SE108GR



3L



BIG  
CAPACITY

## Durable Front Handlebar Bicycle Sports Bag

SE109



- **Movable Fixing Straps For Easy Installation.**
- **Internal Aluminum Foil Insulation.**
- **External Mesh Pocket For Sundries.**
- **Aluminum Foil Insulation.**
- **Draw String Bag.**
- **Storage Bag.**



SE109BL

SE109GR

SE109YL



OUTSIDE  
STORAGE



ALUMINIUM  
FOIL  
THERMAL  
INSULATION

## Front Handlebar Bicycle Sports Bag

SE110



- **Sensitive TPU Touch Screen 6.0-6.7 Inch.**
- **Water Resistance With Rain Cover.**
- **4.2 L Large Storage Capacity.**
- **Easy To Installation Of Strap-On Velcro.**
- **Anti-Scratch PVC Material.**
- **Multifunctional.** Could use as handbag.



SE110BL

SE110GR

SE110YL



4.2L

SUNSHINE  
TOUCH  
SCREEN



SHOULDER  
STRAP

## Waterproof Saddle Bag

SE111



- **Easy To Installation.** Adjustable magic tape is cuttable.
- **Waterproof & Dual Zippers.**
- **Large Capacity.**
- **Stable On The Tube.**
- **Hang Taillight.**



SE111BL

SE111GR

SE111YL



2L



## Reflective Seat Saddle Bag With Pocket For Water Bottle

SE112



- **Waterproof & Dual Zippers.**
- **Easy To Installation.**
- **Large Capacity.**
- **Stable On The Tube.**



SE112YL



SE112BL



SE112GR



2L



## Rear Seat Bottle Bicycle Saddle Bag With Double Water Bottle Pocket

SE113



- **Double Water Bottle Pocket Design** for long trip.
- **Large Compartment** with mesh pocket for different tools.
- **Reflective Strip** make your bike more visible in night.
- **Upgraded Wings Buckle** fastening tapes make the bottles more stable in pocket.
- **Strap-On Mount.** Easy Installation.
- **Hang Taillight.**



SE113BL



SE113GR



SE113YL



2L



## Large Zippered Pockets Bicycle Traveling Carrier

SE114



- **Middle-Distance Travel Saddle Bag** for camera/saddle bag & hand carry/extendable/with rain cover.
- **Flip Cover With Hidden Zipper.**
- **Load Up To 26L For Mid-Distance Travel.**
- **Adjustable, Removable And Thicker Compartment.**
- **Rain & Dust Cover.** Can cover the entire expanded bag, easy to clean & storage.



SE114YL



SE114BL



SE114GR



LARGE ZIPPERED POCKETS



26L

## Double Pannier Seat Saddle Bike Back Bag

SE115



- **Waterproof Material.** Can be cleaned easily by a damp cloth.
- **500D Tear-Resistant Polyester + Double PVC Coating Triple.**
- **PVC Double Laminated.**
- **Full Pressure Glue Design.** Seamless and no pinholes.
- **Large Capacity** can hold up to 25 liters.
- **Scratch-Resistant**
- **Wear-Resistant.**
- **Easy To Store.**



SE115BL



SE115GR



SE115YL



25L

# Holders

## Bike Computer Holder

- **Aluminium Alloy Body, lightweight, high hardness, more corrosion resistance. The front and back sides are designed symmetrically, which can be installed on the left and right sides of the handlebar designed to be retractable ergonomically.**
- **Easy to install.**

SE500



## Clamping Mobile Phone Holder

SE501



## Clamping Mobile Phone Holder

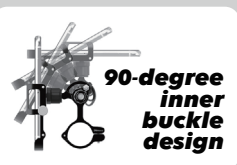
SE502



**Absorption of vibration and more protection**



**Suitable for different sizes of devices**



**90-degree inner buckle design**

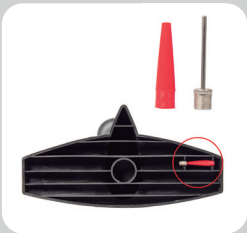


# Tire Pumps

## Tire Pump

SPEC

<b>Material</b>	Iron, Nylon plastic
<b>Size</b>	14.5 x 12.5 x 62.5 cm
<b>Usage</b>	Most Bicycles, Electric Scooter



SE600BL



SE600GR



SE600YL

SE600



## Mini Tire Pump

SPEC

<b>Material</b>	Aluminium, Nylon plastic
<b>Size</b>	ø 2.2 x 18 cm
<b>Usage</b>	Most Bicycles, Electric Scooter



SE601BL



SE601GR



SE601YL

## Mini Tire Pump

SPEC

<b>Material</b>	Aluminium, Nylon plastic
<b>Size</b>	ø 2.7 x 29 cm
<b>Usage</b>	Most Bicycles, Electric Scooter



SE602BL



SE602GR



SE602YL

SE602

# Lights

## Head Light Rechargeable

SPEC

Material	Metalic cover
Brightness	1000 Lumen
Battery	3.7V 4000 mAh
Feature	With low battery indicator
Size	ø 3.3 - 9.9 cm
Usage	Most Bicycles



SE700



## Waterproof Front Light

SPEC

Material	Aluminium alloy
Brightness	400 Lumen
Battery	3.7V 2000 mAh
Feature	Waterproof, 360° Rotation, 3 Brightness Mode, Shock Resistance.
Size	ø 2.8 - 9.2 cm
Usage	Most Bicycles



SE701



## LED Front/ Rear Light Set

SPEC

Material	ABS + Aluminium
Brightness	3 Lumen
Battery	CR2032x2 (included)
Feature	Flash-Steady-Off
Size	ø 2.5 - 3.2 cm
Usage	Most Bicycles



SE702



## Silicone Light Set

SPEC

Material	Silicone
Brightness	Front: 20 Lumen Rear: 6 Lumen
Battery	3.7V 260 mAh
Feature	1 Super Bright White/Red LED. Steady-Flash-Off
Power Supply	USB Rechargeable
Size	2.2 ~ 3.2 mm
Usage	Most Bicycles

SE703





# Rear Light

SPEC

<b>Material</b>	PC + ABS
<b>Brightness</b>	35 Lumen
<b>Battery</b>	900 mAh 18350 type li-battery
<b>Feature</b>	Braking highlight, USB rechargeable
<b>Power Supply</b>	USB Rechargeable
<b>Size</b>	6.5 x 4.2 x 5.4 cm
<b>Usage</b>	Most Bicycles

SE704



# Waterproof Rear Light

SPEC

<b>Material</b>	Aluminium + ABS + Silicone
<b>Brightness</b>	50 Lumen
<b>Battery</b>	3.7V 400 mAh
<b>Feature</b>	Rechargeable. High/ Mid/Low/Slow Flash/ Fast/Blowing Spunds
<b>Power Supply</b>	USB Rechargeable
<b>Size</b>	6.2 x 2.8 x 3.1cm
<b>Usage</b>	Most Bicycles

SE705



# LED Rear Light

SPEC

<b>Material</b>	PC + ABS
<b>Brightness</b>	30 Lumen
<b>Battery</b>	400 mAh
<b>Feature</b>	Six lighting modes
<b>Power Supply</b>	USB Rechargeable
<b>Size</b>	7.2 x 2.1 x 2.2 cm
<b>Usage</b>	Most Bicycles

SE706



# Waterproof Rear Light

SPEC

<b>Material</b>	Aluminium Alloy
<b>Brightness</b>	20 Lumen
<b>Battery</b>	1.7 V 500 mAh
<b>Feature</b>	Fast/Slow flashing, Energy saving, Breathing, Constant light.
<b>Power Supply</b>	USB Rechargeable
<b>Size</b>	4 x 3.4 x 3.4 cm
<b>Usage</b>	Most Bicycles

SE707



# Locks

## Cable Lock

SE800



● SE800BK ● SE800BL ● SE800YL

## Coil Cable Lock

SE801



● SE801BK ● SE801BL ● SE801YL

## Coil Cable Lock

SE802



● SE802BK ● SE802BL ● SE802YL

## Coil Cable Lock

SE803



● SE803BK ● SE803BL ● SE803YL



## Coil Cable Lock

SE804



● SE804BK

● SE804BL

● SE804YL

## Folding Lock

SE805



● SE805BK



● SE805BL



● SE805YL

## Coil Cable Lock

SE806



● SE806BK

● SE806BL

● SE806YL

## U Lock

SE807



● SE807BK

● SE807BL

● SE807YL

# DISPLAY BOX

SEDISP1



## SPEC

<b>Material</b>	Cardboard
<b>Dimensions</b>	50 x 50 x 200 cm



# WALL EXHIBITOR

SEDISP2



SPEC

Material	Cardboard
Dimensions	100 x 200 cm



# ***FROM THE RACE TO THE ROAD***

***[www.sparco-emobility](http://www.sparco-emobility)***

Follow us on  
*Instagram*



**SPARCO\_CORSA**