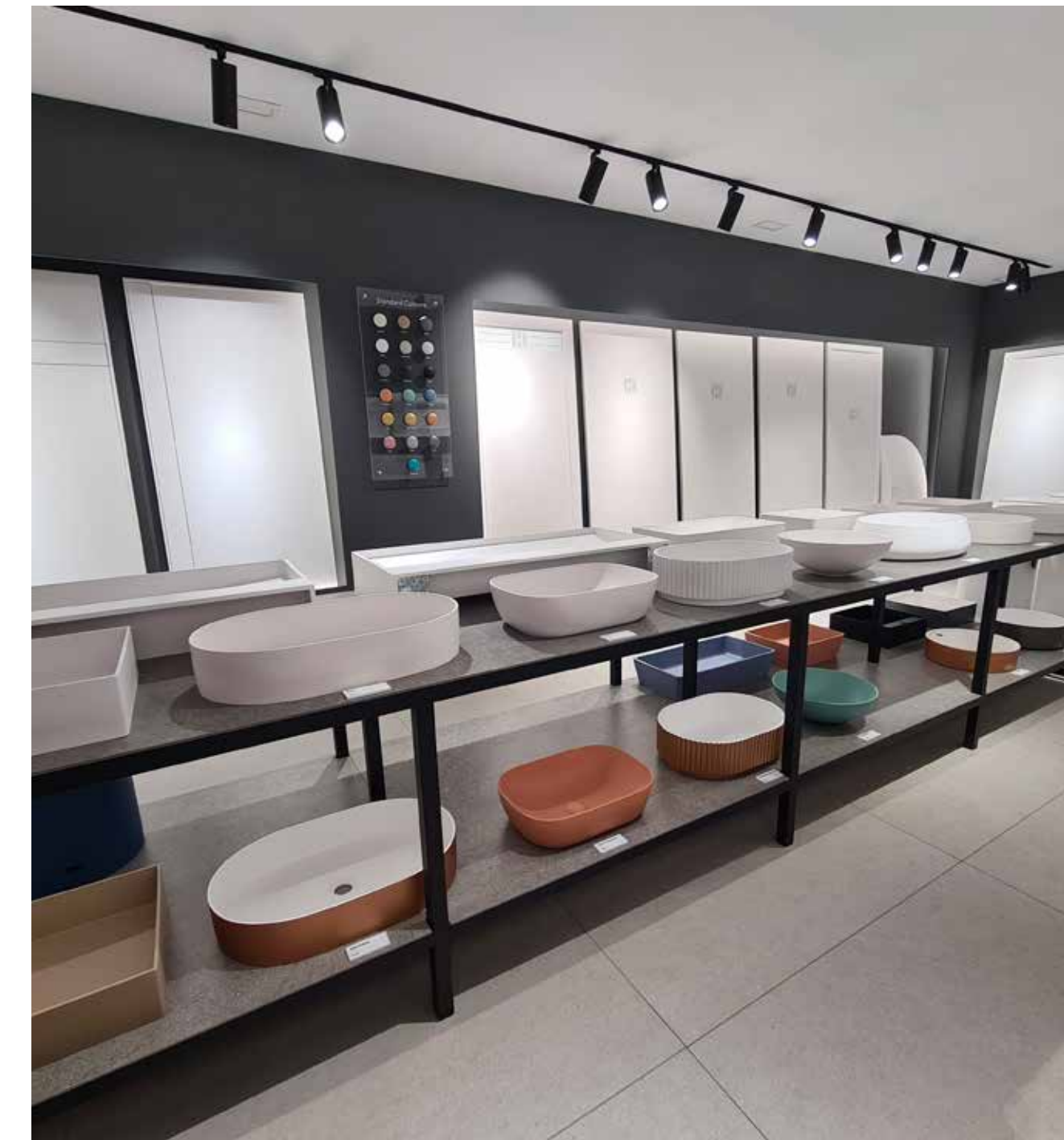


PRESENTATION
COMPANY

Born
to be
admired

zenon.

2025



SMART SOLID SURFACE



GRUPO ARGENTA



▲ Oficinas Centrales de Argenta



▲ Oficinas Centrales de Azuvi



▲ Oficinas Centrales de Cifre

¿Quiénes somos?

■ Zenon Bath & SPC Surfaces, is one of the brands of the Argenta industrial group.
The Argenta industrial group markets its products through 4 brands.

ARGENTA **AZUVI** **cifre** **zenon**

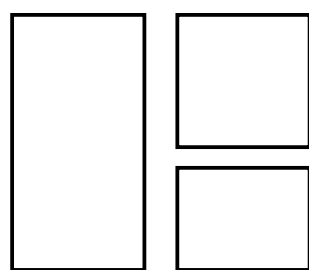
■ We are the 3rd largest industrial ceramics group in Spain.

■ We are a large business group located in Castellón, in the east of Spain, where the Spanish ceramics cluster is located, with the largest production in Europe.



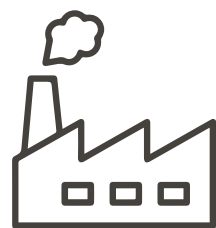
1000

employees



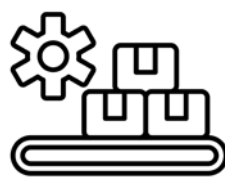
+80

Formats
From 6 to
20 mm.



8

Production
sites



23

Production
lines



60M_{m²}

Production
capacity
per year



10

Logistics
Centres



26M_{m²}

Storage
capacity

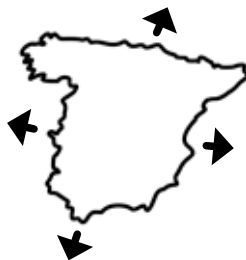


We export to



+135

Countries



70%

Exportation



30%

National

Turnover



450M€

Annual
turnover



zenon

zenon

It is the Argenta Group's brand whose objective is to provide coverage in those projects that require bathroom products.



TYPE OF MATERIALS

GEL COAT

Flexible/elastic polyester resin
Loads
Catalyst/Accelerator
Inhibitor
Thinner
Pigments/Colourants
Thixotropic agent

WE MANUFACTURE:
Worktops
Shower trays
Shelves

- 01 Texture
- 02 Colours
- 03 Thermofusion
- 04 Mould
- 05 Coloured body

- PROPERTIES
- 01 Antibacterial
 - 02 Uniform colour
 - 03 Repairable
 - 04 Soft touch
 - 05 Allows cutting
 - 06 Adaptable to the space
 - 07 Anti-absorbent surface
 - 08 High hardness
 - 09 Recyclable
 - 10 Easy to clean

ACRYLIC

Polymer of methyl methacrylate.
Methyl methacrylate monomer.
Polymerisation initiators.
Plasticisers.
UV stabilisers.
Viscosity control agents.

WE MANUFACTURE:
Bathtubs

- 01 Thermoformable
- 02 Backlit
- 03 U.V. resistant
- 04 Thermal insulation.
- 05 Aluminium-like hardness
- 06 Impact resistant
- 07 Very light
- 08 High flexibility
- 09 Transparency

SMART SOLID

Acrylic Resin
Alumina tri-hydrate
Pigment

- 01 All Mass
- 02 Thermoformable
- 03 Seals not visible
- 04 Backlit
- 05 U.V. resistant
- 06 Versatility
- 07 Suitable for food use
- 08 Matt finish
- 09 Soft touch

SOLID

Polyester resin
Alumina tri-hydrate
Pigment

- 01 Full body
- 02 Mould
- 03 Joints not visible
- 04 Lightweight
- 05 Matt finish

- PROPERTIES
- 01 Antibacterial
 - 02 Uniform colour
 - 03 Repairable
 - 04 Soft touch
 - 05 Allows cutting
 - 06 Adaptable to the space
 - 07 Anti-absorbent surface
 - 08 High hardness
 - 09 Recyclable
 - 10 Easy to clean

WE MANUFACTURE:
Planchas
Worktops
Shower trays
Shelves
Bathtubs
Washbasins

PRODUCTS



PRODUCTOS



13

SHOWER
TRAY

GEL COAT
ANGULAR
EVOLUTION
FRAME
SMART KORVIT
SMART SLATE
SMART SOFT
SIDE
WEST

SOLID
BALI
CAPRI
MAUI

SMART SOLID
FIJI
NASSAU



8

COUNTERTOPS

GEL COAT
AQUARIS

SOLID
BERLIN
NIZA

SOLID SKIN
SOFIA

SMART SOLID
ATENAS
BRUSELAS
LISBOA
DUBLIN



24

WASHBASINS

SOLID
ALASKA
DUERO
ELIPSE TOP
ESLA
FAROE
FLORIDA
OLYMPIA TOP
RIN
TAMESIS
VOLGA

SMART SOLID
CALIFORNIA
DINAMARCA

SUSPENDED
WASHBASINS
SOLID
ARIEL
ARIS
GUADIANA
LUNA
TITAN



8

FREESTANDING

SOLID
ELIPSE
FREESTANDING
EMBER
FLORIDA
OLYMPIA
FREESTANDING
SUNSHINE
TAMESIS



24

STRUCTURE

WALL
STRUCTURE

ZE50
ZE60

FLOOR
STRUCTURE

ZE75
ZE85



19

BATHTUBS

ACRYLIC
AIDAR WALL
AURA
COMO
ELIPSE
HERITAGE
KIVU WALL
LEMAN
MAGGIORE
MARACAIBO
OLYMPIA
SOTTOVENTO

SOLID
ARENAL
BIWA
COVADONGA
LAGO
POWELL

SMART SOLID
MICHIGAN
ENOL
LOMOND



1

BATHROOM
FURNITURE

HIDRA



2

REPLACEMENT
PANELS

SPC

ESSENZA



3

MIRRORS

IRIS
LYRA
ORION

PRODUCTS

create°



In Create we have more than 35 special graphics, graphics for all tastes that give this collection incredible decorative possibilities. The graphics are applied on three models: Smart, Evolution and Minimal.

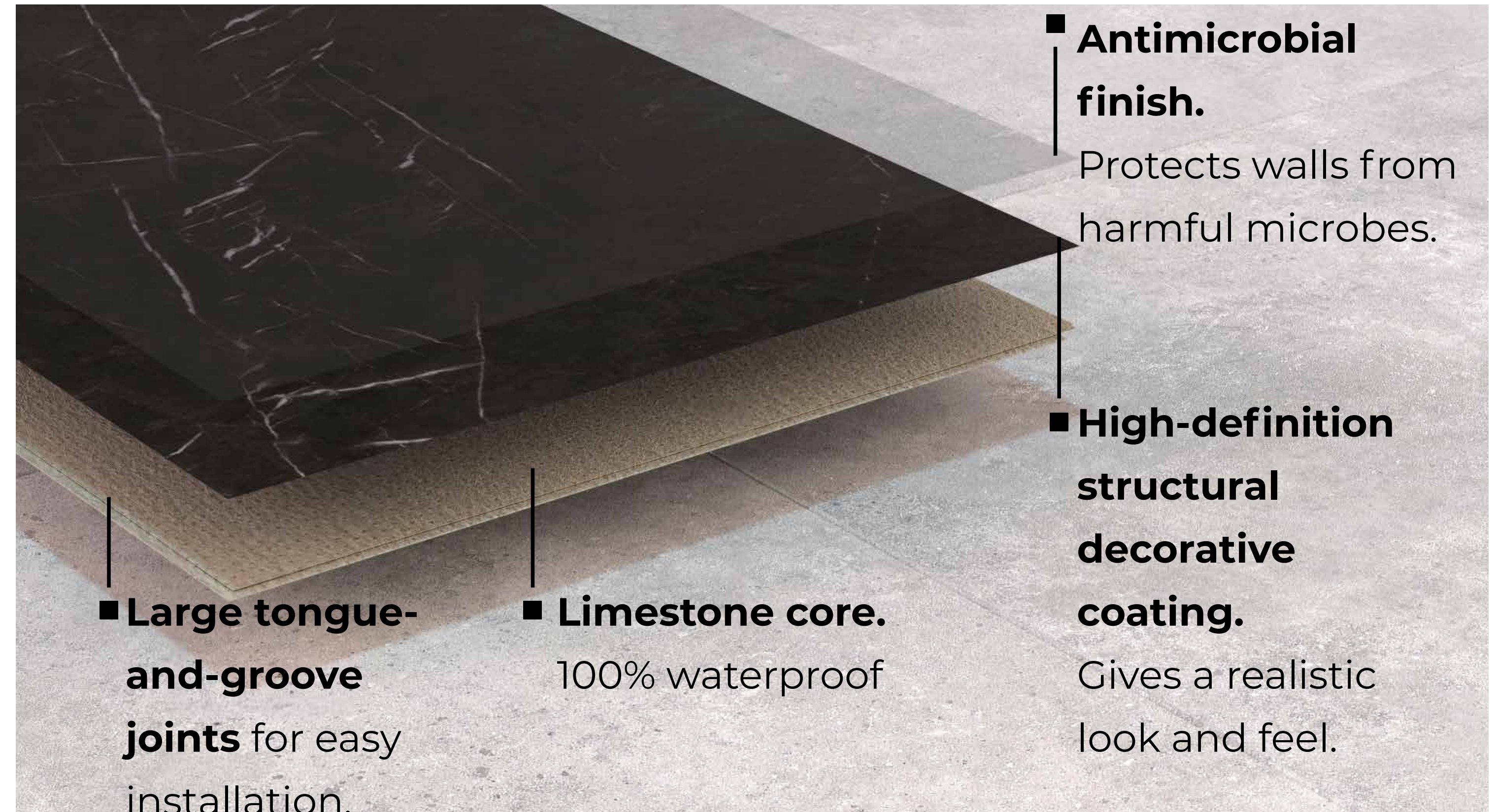


PRODUCTS



SPC SURFACES

With our SPC wall panels and Minimal shower trays, we achieve the perfect combination for the bathroom.

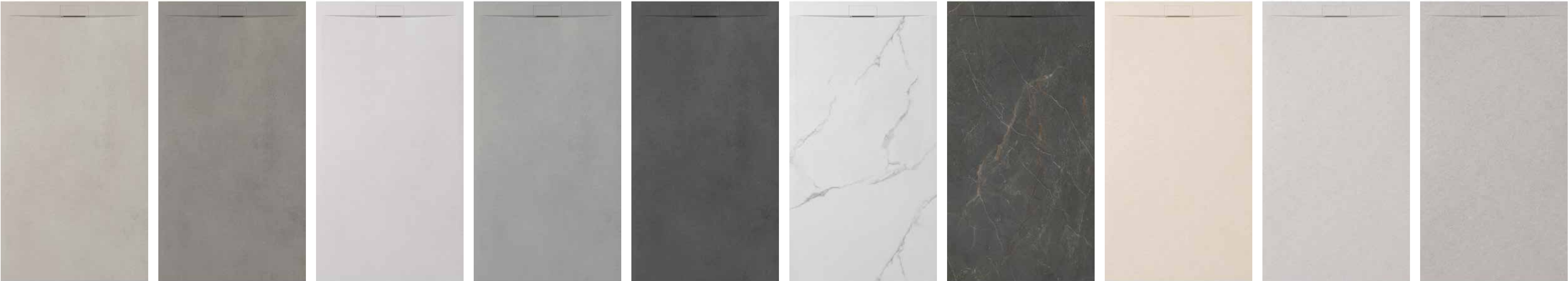


- They are made of SPC panels, a waterproof and fireproof material that resists bacterial attack and mould growth.
- One of its main advantages is its lightness and easy installation, thanks to the Click&Clack system that facilitates product installation.
- Recyclable material.
- Essenza is the first collection we are launching with this material, composed of 6 shades in a neutral range.
- The panels are available with a soft finish and in a format of 120x280 cm and 4 mm. thickness.

COLOURS



Egeo Cream Egeo Greige Egeo White Egeo Pearl Egeo Anthracite Calacata White Mountain Vertigo Cream Vertigo Light Vertigo Pearl



COLORS

GEL COAT

STANDARD

Applicable on both interior and exterior faces for finishing

SOFT • SLATE • KORVIT • STONE

COBALT		SAGE		NIEVE		NEW PEARL	
TERRACOTTA		NATURAL		PERLA		CEMENTO	
CREAM		MOKA		ANTRACITA		NEGRO	
RAL							

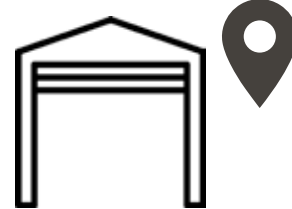
Also available in all
RAL colours.

METALLICS


Only applicable on the outer side for
finishes **SOFT**

ORO		ORO VIEJO	
COBRE		ROSA	
PLATA		TITANIO	
TURQUESA			

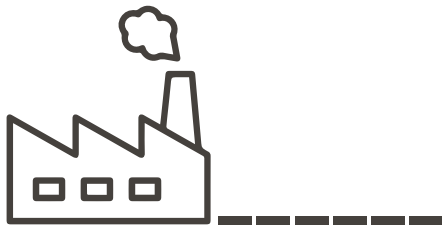
PRODUCTION AND LOGISTICS




2
Logistics
Centres



Sonseca
Onda




10Mil
Units|Month



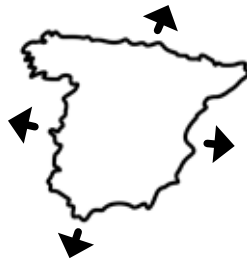
20Mil Und.
Storage capacity

DISTRIBUTION AND INVOICING


WE DISTRIBUTE IN



+90
Countries




75%
Export



25%
National

WE INVOICE



11.6M€
Turnover 2023

TEAM

A great team of people working side by side with you.



■ At Zenon, we stand out for enjoying what we do and for our close and attentive service to our customers.

■ Their problems and their needs are our problems and our needs.

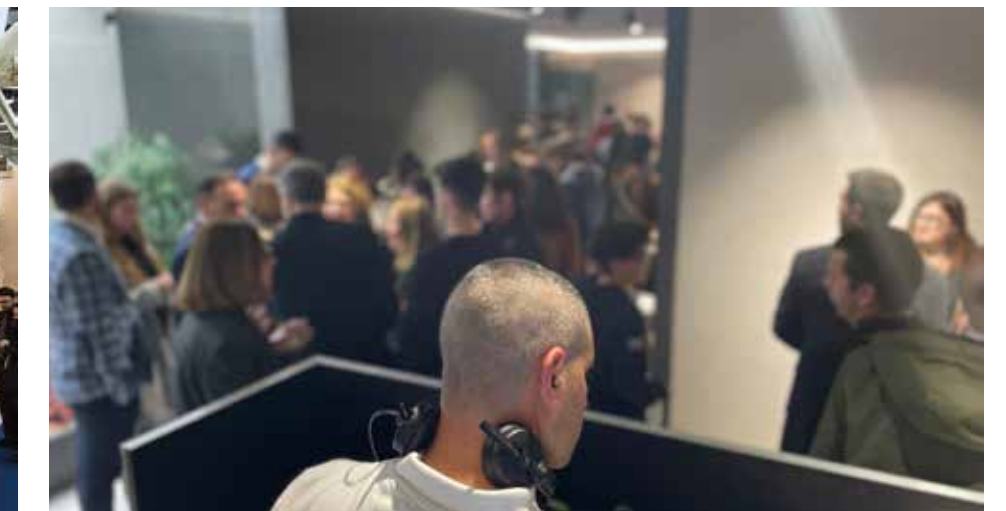
■ The stability of Zenon's team translates into stability in the relationship with our clients.

FAIRS

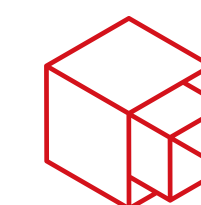
WE ARE PRESENT AT THREE OF THE MOST IMPORTANT EVENTS IN THE SECTOR WORLDWIDE

demonstrating our commitment to excellence and global presence in this ever-evolving industry.

We also hold our Open Days which take place during the dates of Cevisama.



Onda | Catellón



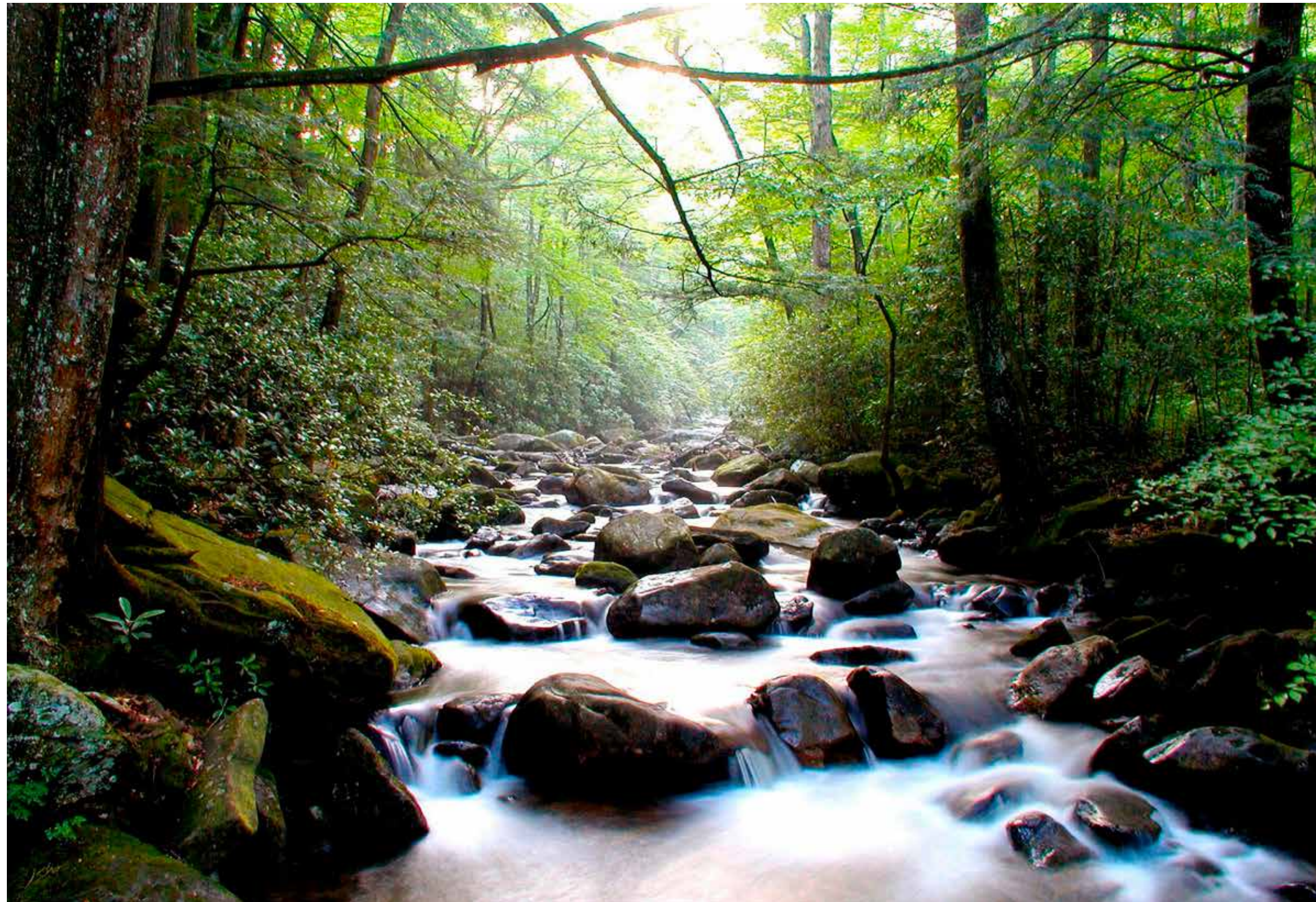
CERSAIE
Bologna - Italy

Bologna | Italy

ISH

Frankfurt | Germany

Environment



Zenon Solid Surface has prioritised the care of the environment and the preservation of the environment since its inception, seeking to improve its production system to minimise its environmental impact.

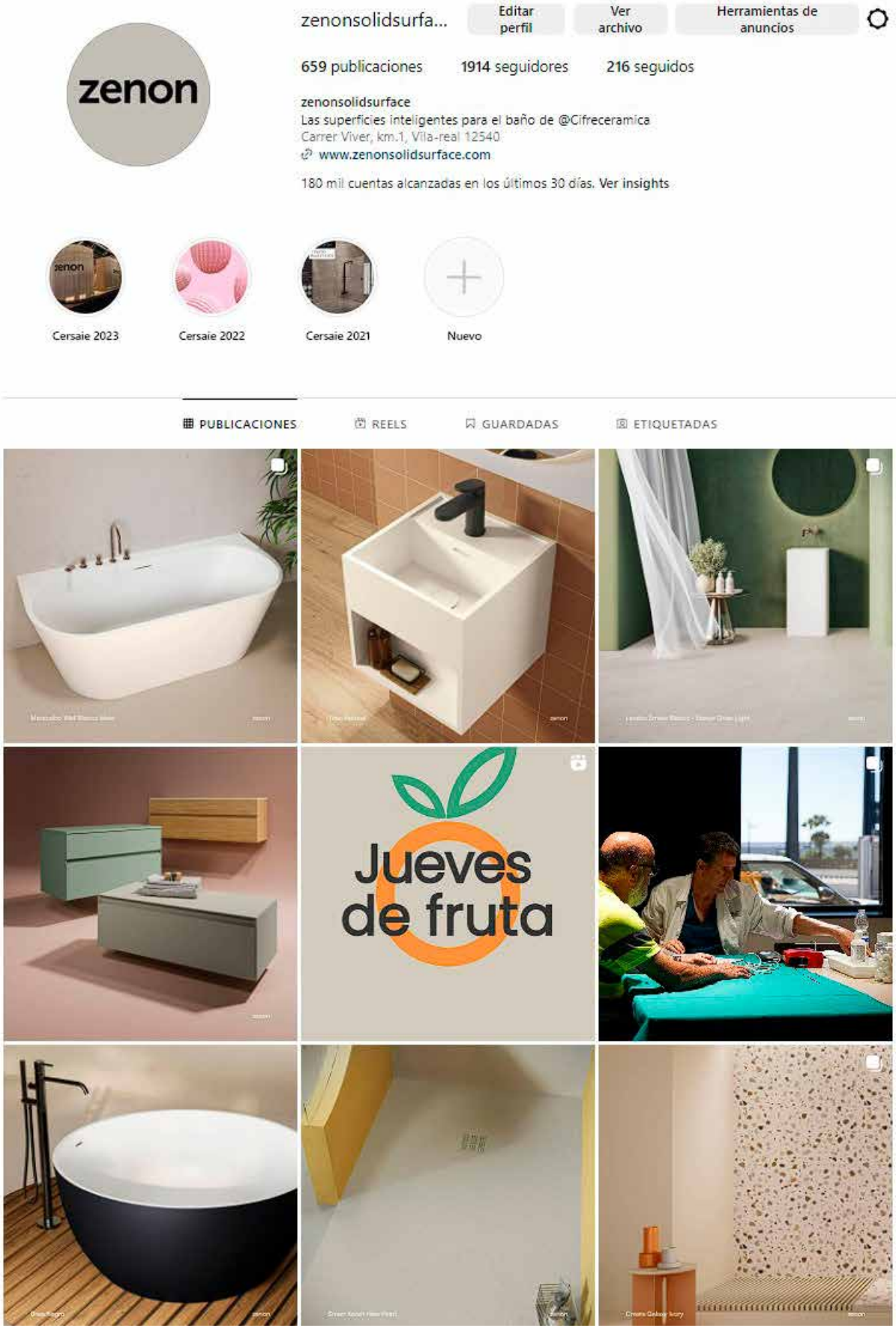
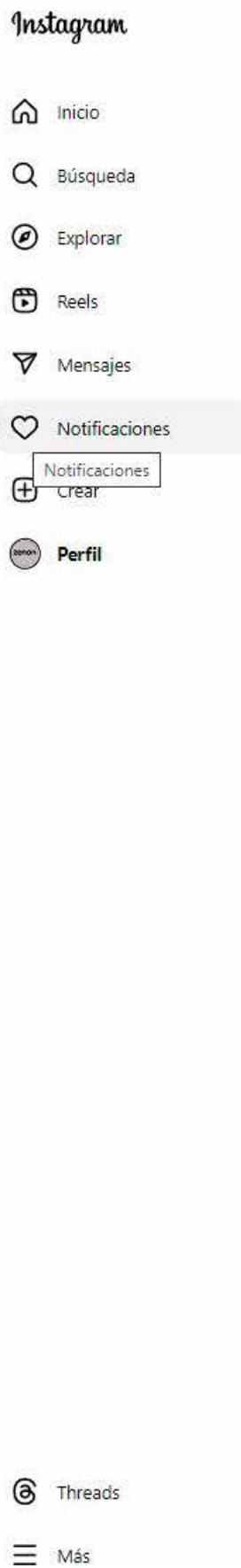
Environmental commitment from the outset
Energy efficiency and transport reduction
Transparency and certification
Sustainable production practices
Energy optimisation and packaging management
Compliance with environmental regulations

AIDIMME
INSTITUTO TECNOLÓGICO

Our products pass the strictest controls.

Our product is produced under the strictest quality controls and complies with all environmental regulations.





Social media

www
zenonsolidsurface
.com

At Zenon we like to keep in touch with our customers, tell them what’s new and what we do every day.



“

thank you for your attention

w w w . z e n o n s o l i d s u r f a c e . c o m

The end

PRESENTACIÓN

