



# **SMART HOME VENTILATION**

**SIMPLE, COMPACT, QUIET & WIRELESS**



Wireless home ventilation with up to 92% heat recovery



## INDOOR AIR QUALITY

90%

of our **lives**  
is spent  
**indoors**



Our **vision** is  
**PERFECT INDOOR AIR QUALITY**

Here at getAir®, the spotlight is on you, your needs and your requirements.

Our mission is to provide you with a healthy and comfortable feel-good climate at home. This includes a pleasant room temperature, balanced humidity level and excellent air quality. We believe everyone should breathe fresh air in their own home, as standard. As a leading manufacturer of decentralised home ventilation systems, we know just what's at stake.



Sustainable products

## OUR MISSION

To improve indoor air quality,  
our products ...



are good for our  
generation's health



protect the next  
generation



preserve our planet's  
resources



Our philosophy – for every home

**CLEAN, FRESH AIR**

A large part of our lives is spent indoors. Here at getAir®, we have long recognised the importance of good, clean air. We want to supply you with clean, fresh air so that you feel even more comfortable in your home. Our success is also underpinned by our technologies and innovations. Everything we do is in a spirit of success through innovation, of inspiring people through tangible added value. When it comes to both technology and service, getAir® is a pioneer in the field of indoor climate.



# DECENTRALISED VENTILATION TECHNOLOGY

## IT'S TIME FOR A RETHINK

Modern ventilation technology has become indispensable in low-energy houses. Automatic ventilation is a must when building a house designed to last. Today's building materials insulate buildings so efficiently that pollutants and moisture no longer simply escape to the outside. Without adequate ventilation, rooms become humid and mould may start to form. By regulating the indoor climate, you can help preserve the building fabric. This increases the value of your property.

Forget the preconception that ventilation systems are complicated to install and heavy to maintain. getAir®'s advanced fresh air systems are impressive with their simple yet highly efficient technology. Thanks to their compact design and plug-in principle, very little effort is needed to install them. The modular design makes filter changes extremely easy. High-quality, proven technologies also guarantee a long service life.



## OUR PRODUCTS, YOUR ADDED VALUE



Easy installation



Mould prevention



Energy saving



Increased property value



Greater comfort



Health





## SMALL FAN, HIGH QUALITY OF LIFE

Good ventilation is about more than just fresh air. It is fundamental to a comfortable living environment. Breathing in air with a healthy oxygen level reduces stress and improves our general well-being.

And you can now keep your windows closed while ventilating your home. Safety and security are positive aspects of decentralised home ventilation that are often underestimated. This protects you and your home against burglary and the worry of whether you really have closed all your windows, particularly while you are away. Even more important is to protect small children against the accident risk of open windows. We take away these worries and leave you with greater peace of mind.



High quality of life



Burglary protection



Accident prevention



Durability



Less stress



Futureproof



## PRINCIPLE OF HEAT RECOVERY

Outdoors  
0°C

EXTRACT AIR PHASE

21°C

2°C

The fan delivers warm, used air to the outside for 60 seconds.

The valuable energy is stored in the ceramic heat accumulator until the maximum storage capacity is reached.



Efficient ventilation for your home

### ADVANTAGES OF GETAIR® SYSTEMS AT A GLANCE:

- ✓ Up to 92% heat recovery
- ✓ Up to 69% heating energy savings
- ✓ Fast & cost effective installation
- ✓ Easy cleaning & maintenance
- ✓ Increased sound insulation
- ✓ Clean & pollen-free ambient air





Indoors  
21°C

19°C

SUPPLY AIR PHASE

Outdoors  
0°C

Once all the stored heat has been fully transferred, the fan changes its direction of rotation – and a new extract air phase begins.

The fan then changes its direction of rotation to bring fresh outside air into the living space. The cold, fresh air warms up.



## Nice and easy THE SIMPLE PRINCIPLE BEHIND DECENTRALISED HOME VENTILATION

With conventional ventilation using windows, heated ambient air escapes freely to the outdoors. It takes the heat energy out with it, which cannot then be used. This is what decentralised home ventilation with heat recovery will prevent. The heat from the stale extract air is stored, and only then is it released to the outside. This simple principle saves significant costs.

Animation showing the principle behind decentralised home ventilation



[www.getair.eu](http://www.getair.eu)

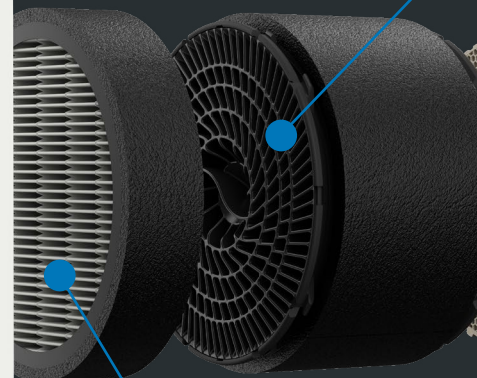




**"MORE COMPACT, QUIET AND EFFICIENT, MORE STABLE CONNECTIONS & PATENTED INFINITY AIR TECHNOLOGY"**

## SMARTCOVER PRO BT INSIDE COVER

- ✓ **Higher flow rate** due to low pressure loss
- ✓ **Suitable for wireless operation**
- ✓ **Flexible flow rate adjustment** due to two tilt positions
- ✓ **Very slimline cover**



## FINE DUST FILTER UNIT\*

- ✓ **Fine dust filter\*** (ePM 2.5 - 69%) to ISO 16890
- ✓ **Dust filter** (ISO coarse 70%) as standard
- ✓ **Easy cleaning** and changing

*\*available as an option*



## TECHNICAL DATA

Heat recovery rate	up to 92%			
	Level 1	Level 2	Level 3	Level 4
Flow rate <sup>1)</sup> [m³/h]	17	28	39	55
Sound pressure level [dB(A)]	12   10 <sup>2)</sup>	19   16 <sup>2)</sup>	26   23 <sup>2)</sup>	33   30 <sup>2)</sup>
Power consumption [W]	1,6	2,6	4,0	6,9
Standard sound level difference <sub>Dn,w</sub> [dB]	42,8 - 63,8 <sup>3)</sup>			
Core drilling diameter [mm]	162			
Energy efficiency category				

<sup>1)</sup> in paired operation  
<sup>2)</sup> with 3K soundproofing element  
<sup>3)</sup> depending on facade finish and sound insulation



## SMARTVENT PRO BT FAN UNIT

- ✓ **Highly efficient** thanks to serrated, overlapping fan blades
- ✓ **Particularly quiet** and **powerful** due to improved aerodynamics
- ✓ Flow-optimised preheat exchanger ensures **more heat recovery** and less pressure loss
- ✓ Aerodynamic finger guard for the maximum flow rate

## SMARTHOOD OUTSIDE HOOD

- ✓ **Increased sound insulation** due to integrated sound insulation mats
- ✓ **Improved facade protection** thanks to integral drip edge
- ✓ **Higher flow rate** due to increased cross-section
- ✓ **Tool-free installation** with simple plug-in adaptor
- ✓ **Stainless steel outside hood** optional

## WRG 9000 HEAT EXCHANGER

- ✓ Very compact heat exchanger for **walls that are particularly narrow**
- ✓ More surface area due to smaller honeycomb-shaped ducts for **more heat recovery** and **low pressure loss**
- ✓ High quality, durable **special ceramic**
- ✓ **Dishwasher-proof**

Also available as a wired version



SmartFan® Pro

## SMARTFAN® PRO BT WIRELESS

Experience the next generation of decentralised home ventilation with SmartFan® Pro BT. Even quieter and more efficient with the maximum flow rate in the smallest space thanks to the patented Infinity Air Technology. Highly energy saving heat recovery plus a secure wireless solution make SmartFan® Pro BT the futureproof ventilation technology for residential construction – whether for new build or renovation. Our SmartFan® Pro BT can supply fresh air to every room in your home, including living rooms, bedrooms and playrooms. This can be controlled individually according to your requirements using unique wireless Bluetooth Mesh technology. A SmartFan® Pro BT is quick and easy to install.

**SIMPLY TURN THE PAGE TO THE PATENTED INFINITY AIR TECHNOLOGY**



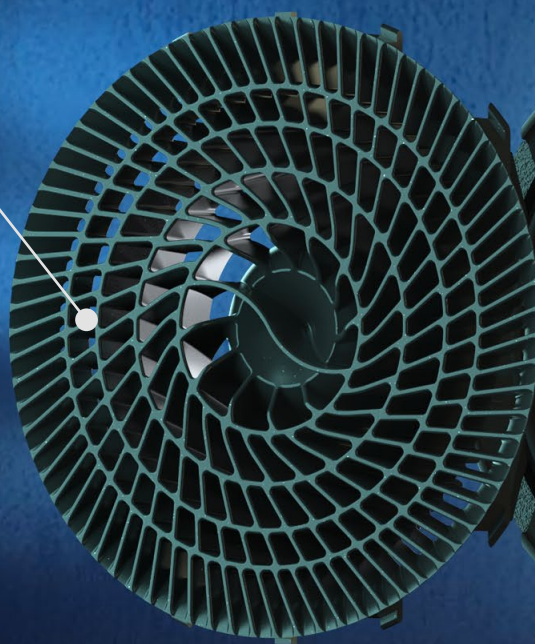
## PATENTED VENTILATION TECHNOLOGY

### VENTECH

The fan consists of serrated, overlapping blades. This unique push-pull technology enables large volumes of air to be delivered whilst inherent noise is reduced to a barely perceptible minimum.

### PRETECH

The preheat exchanger is made from a special plastic that stores heat. Aerodynamic air routing optimises the air flow to the heat exchanger.



## INFINITY AIR TECHNOLOGY

The patented Infinity Air Technology of the SmartFan® Pro BT brings together four independent technologies – PreTech, VenTech, GripTech, RecoTech – for optimum efficiency, aerodynamics and sustainability. The serrated, overlapping fan blades, heat-storing plastic and aerodynamic finger guard are setting new standards in home ventilation systems.



## GRIPTECH

This is not just a simple finger guard. The material also stores additional heat and its aerodynamic cross spars minimise pressure loss.

## RECOTECH

The high-performance ceramic consists of a very large number of small, honeycomb-shaped ducts. This makes the surface area larger to maximise heat storage capacity. It also makes the heat exchanger extremely compact.



## WIRELESS CONTROL UNITS



### YOUR VENTILATION, YOUR WAY!

In conjunction with the getAir® app on your smartphone, the innovative wireless control units allow you to create a comfortable, feel-good climate at any time. Convenient to control via the app or directly via the wall-mounted control unit.

Use the many possible individual settings or simply achieve maximum comfort at the touch of a button, fully automated and controlled using sensors.



**Heat recovery**



**Quick ventilation**



**Automatic mode**



**Sleep mode**



**Power mode**



**Timer mode**



**Air humidity**



**Temperature display**



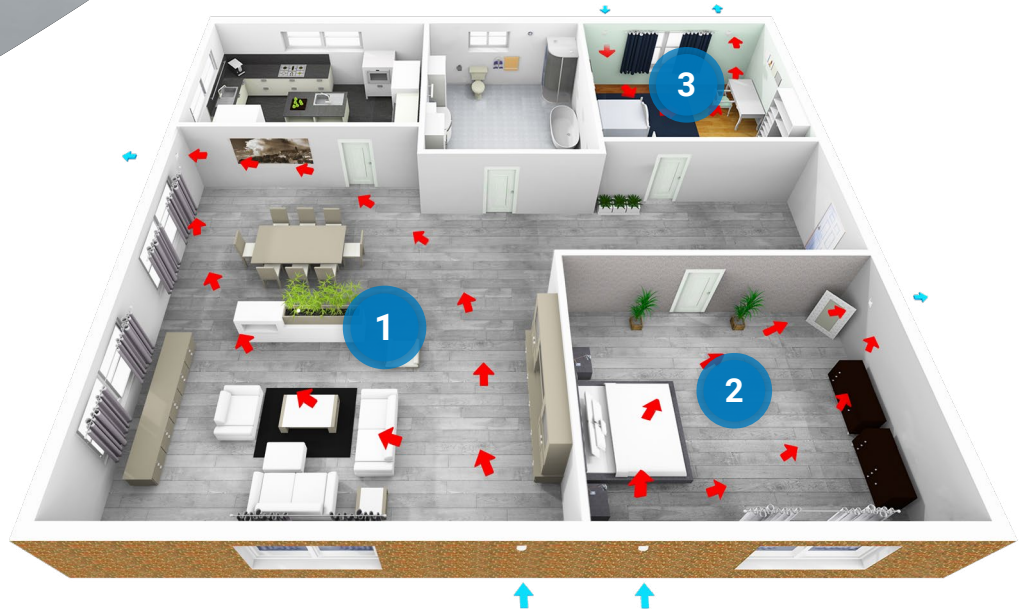
**Air quality display**

The **ComfortControl Pro BT** and **EcoControl Pro BT** communicate via Bluetooth Mesh. It is a very stable communication standard that can be used instead of data cables.

This makes both control units ideal, in conjunction with a SmartFan® Pro BT, for energy renovation and other refurbishments. The system is very quick and comparatively easy to retrofit.



## ZONE REGULATION FOR DEMAND-BASED VENTILATION



Satisfy different ventilation requirements concurrently with one App\*

1

### Living room

#### Situation:

Birthday party

#### Requirement:

High humidity level,  
increased oxygen consumption

#### Solution:

Power mode with automatic  
humidity control

2

### Bedroom

#### Situation:

Partner sleeping

#### Requirement:

Low humidity and noise levels

#### Solution:

Sleep mode with automatic  
humidity control

3

### Child's room

#### Situation:

Child playing

#### Requirement:

Medium humidity and noise levels

#### Solution:

Automatic mode with automatic  
humidity and temperature control



ComfortControl Pro BT with app



EcoControl Pro BT



EcoControl Pro BTB remote control

\*One ComfortControl Pro BT is required for each zone.

## BLUETOOTH MESH



New wireless standard

### **HIGHLY STABLE CONNECTIONS THANKS TO BLUETOOTH MESH**

Conventional, single-direction wireless solutions operate on a master-slave model – from control unit to fan. Bluetooth Mesh is different: this solution can connect all the fans with each other in one big network so they can communicate back and forth. The system's long reach and extreme stability, even through multiple walls, are particularly impressive. Bluetooth Mesh is straightforward to configure and manage.

Simply  
**wireless**  
control!





Simple control via app\*

## 4-IN-1 SENSOR TECHNOLOGY

Fine sensors record humidity, temperature, air quality (VOCs) and air pressure. The fans are then turned up or down fully automatically based on the state of the ambient air. Users can switch between "quick ventilation" mode (fan turns in one direction) and "heat recovery" mode (fan alternates between two directions).

At high air pressure, the fans control themselves fully independently to even out any significant pressure differences. The app allows users to view the indoor air quality at a glance via the humidity and temperature measurement values. Air quality is greatly affected by pollution from volatile organic compounds, also known as VOCs.



*\*Only in conjunction with ComfortControl Pro BT*



## COMPLETE SOLUTIONS

### WINDOW REVEAL

#### silentAir

The system disappears into the reveal and has increased external sound absorption.



### CELLAR

#### KA cellar solution

Even cellars can benefit from the SmartFan® technology thanks to this solution.

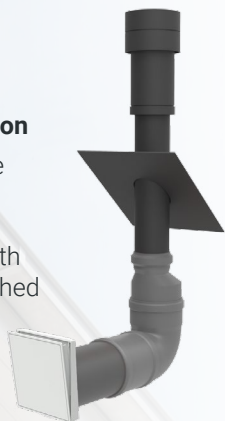




## ROOF

### DA roof solution

The innovative roof solution! The system is compatible with almost all pitched roofs.



## GOOD AMBIENT AIR EVERYWHERE

getAir® ventilation systems supply fresh air to every room in your home. You can install a SmartFan® in as many rooms as needed. The systems for window reveals, roofs and cellars are all based on SmartFan® technology.

### Bathroom & kitchen

#### SmartFan® X

Unpleasant odours and moisture are quickly and discreetly removed via a pipe in the external wall.



### Rooms prone to humidity

#### SmartFan® XR

This solution for rooms with high levels of humidity fulfils the same functions as the X series.





## "SOUND INSULATING VENTILATION AS PART OF THE EXTERIOR INSULATION AND FINISH SYSTEM (EIFS)"

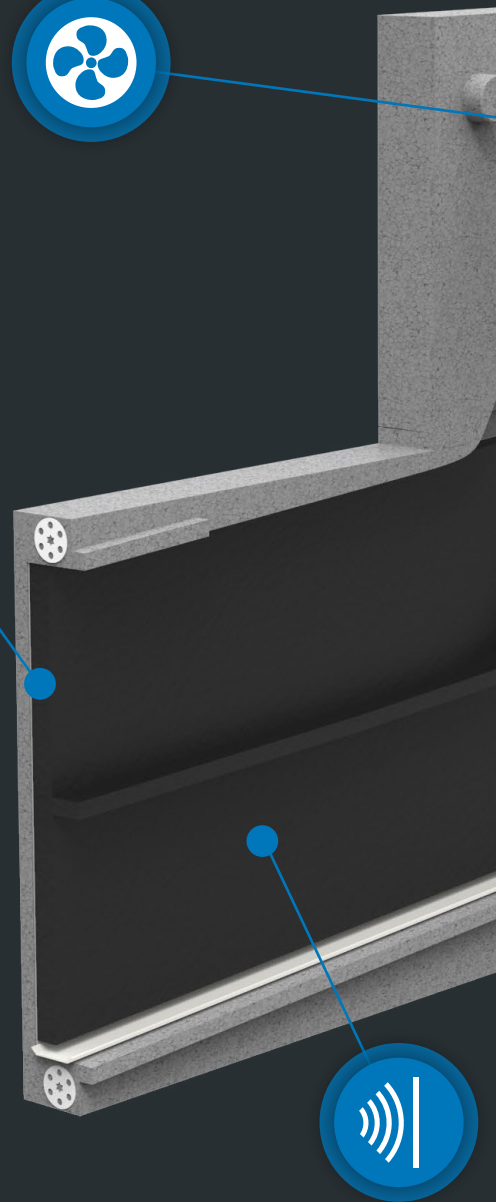
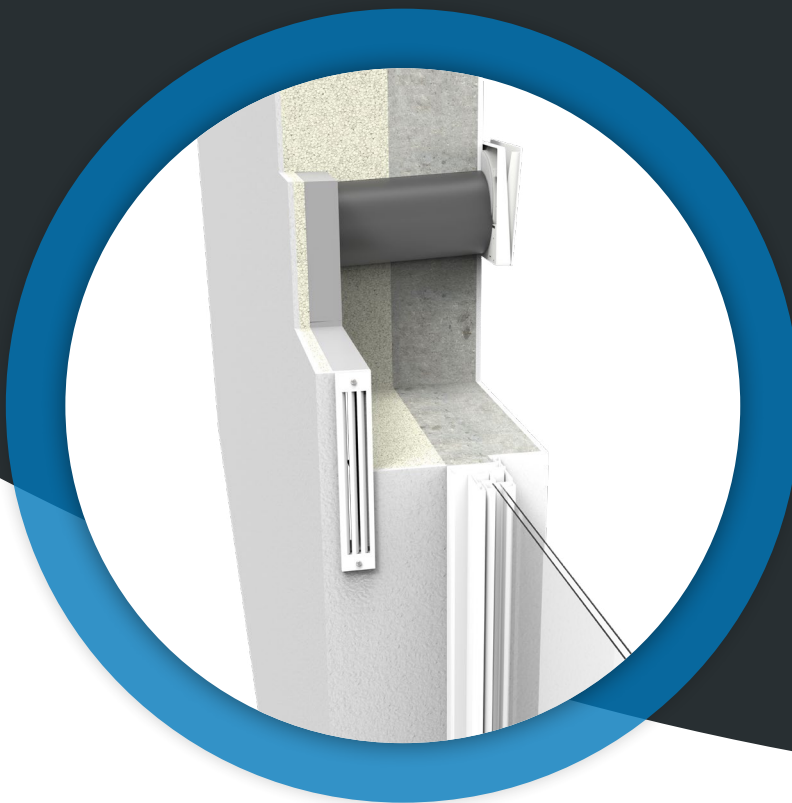
### SMARTFAN® PRO TECHNOLOGY

The system is based on the innovative SmartFan® Pro components.



### VIRTUALLY INVISIBLE

This innovative decentralised home ventilation unit is easily integrated into the window reveal and can already be fitted with the exterior insulation and finish system (EIFS) measuring just 60 mm wide.



## SILENTAIR FACADE ELEMENTS – THE VENTILATION WITH THE MOST NOISE PROTECTION

The silentAir sound insulating ventilation in the window reveal gives you peace and restful sleep. Particularly in residential areas with high noise levels, for example near flight paths, railway lines and busy roads, installing home ventilation will improve your living situation. Fresh air without noise: finally possible with silentAir facade elements.



## SILENTAIR WINDOW REVEAL

### "QUIET" INSIDE COVER

The sound and flow-optimised sound insulating inside cover minimises incoming sound.

### INNOVATIVE PLUG-IN PRINCIPLE

Thanks to the innovative plug-in system, the window reveal element can be inserted into the reveal by rotating it 180° to the left or right. In addition, the double deflection of the airflow minimises incoming sound.

### BEST THERMAL INSULATION PROPERTIES

The reveal channel is made of patented Neopor® thermal insulation material. Thanks to the proportion of ground graphite, Neopor® achieves up to 20% higher insulation performance. The increased thermal insulation contributes to improved energy efficient construction.

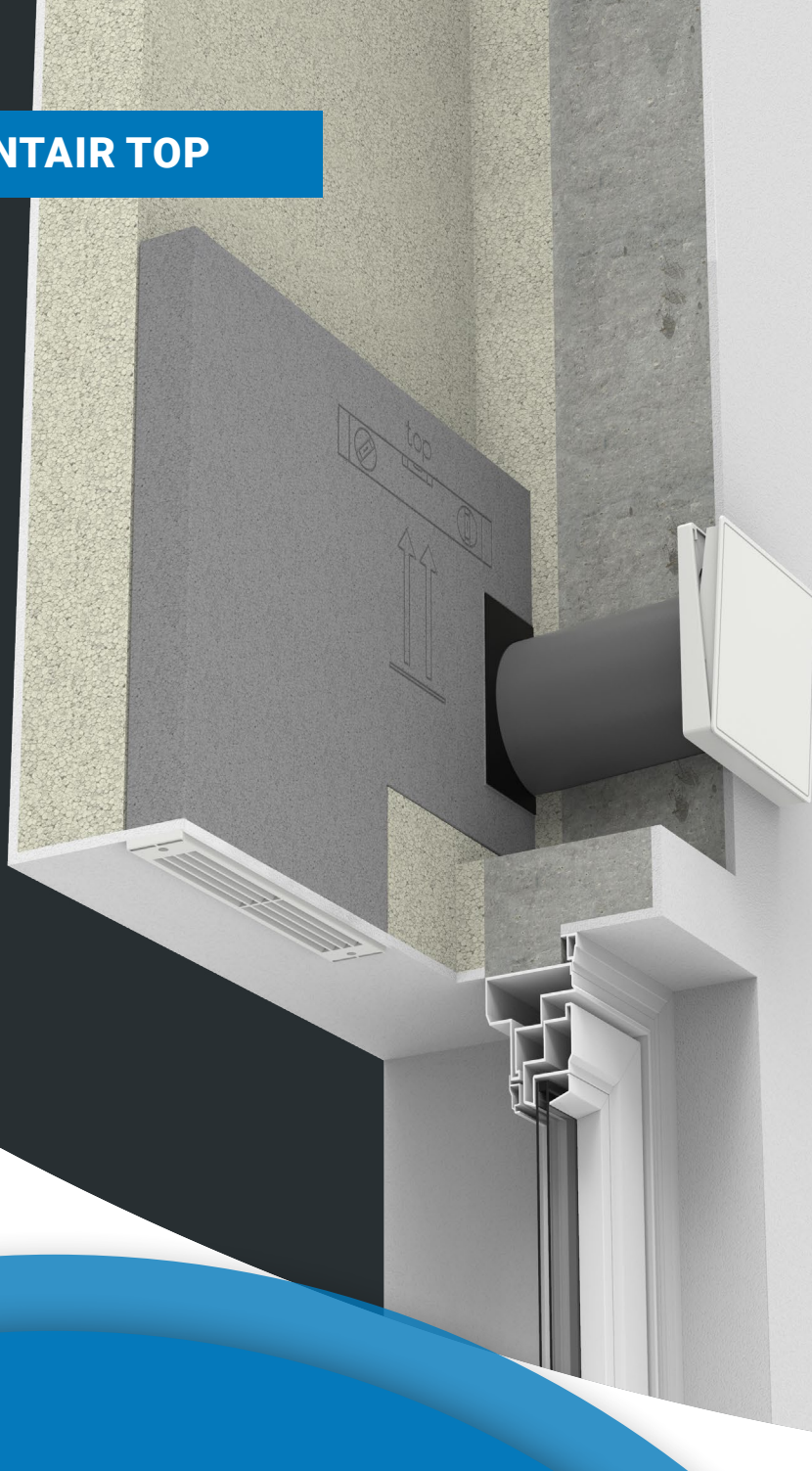
### INCREASED EXTERIOR NOISE ABSORPTION

An integrated sound insulation mat and the double flow deflection almost completely absorb exterior noise.

### ADVANTAGES

- ✓ Facade finish barely visible
- ✓ Increased sound insulation (sound insulation class 6)
- ✓ Double sound deflection
- ✓ Up to 64 dB standard sound level difference
- ✓ High thermal insulation
- ✓ Up to 92% heat recovery
- ✓ Easy installation & cleaning

## SILENTAIR TOP



### ADVANTAGES

- ✓ Ideal where walls are narrow either side of the window
- ✓ Suitable for patio doors
- ✓ Invisible from the outside
- ✓ High levels of sound insulation, up to  $D_{n,e,w} = 62 \text{ dB(A)}$
- ✓ Outside cover with plastic or stainless steel ventilation grille





## SILENTAIR FRONT

### ADVANTAGES

- ✓ No windows required
- ✓ Very high sound insulation thanks to multiple sound deflection, up to  $D_{n,e,w} = 63$  dB(A)
- ✓ Can be used with or without tracks for roller shutters
- ✓ Can also be used in attic storeys where there is sufficient jamb height
- ✓ Outside cover, plastic or stainless steel

## ACCESSORIES

Ideal for new build

### WALL INSTALLATION BLOCK

**i** The wall installation block is indispensable for energy efficient new build construction. The block consists of two parts made from hardly flammable insulation material Neopor®. This rectangular block comes with a 162 mm opening and a 3° fall for the condensate drain. It has openings through which cables can be fed, to ensure flexibility in installing the system. It is simply walled in at the pre-defined height during the shell construction phase. This dispenses with the need for any core drilling later on.



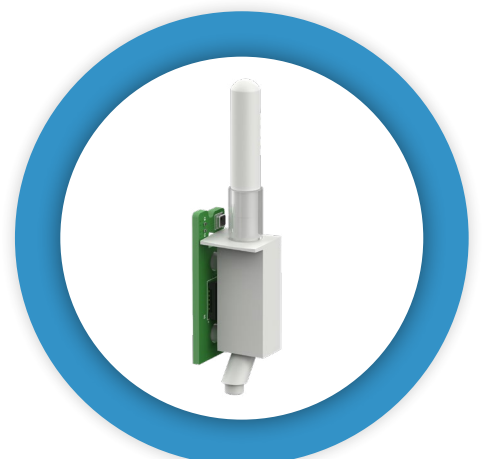
### For when even quieter is better SOUNDPROOFING ELEMENTS

The soundproofing elements reduce the sound pressure level of an already acoustically optimised **i** getAir® system by up to an additional 20%. Air handling performance remains at 100% due to the sound insulation set short. This is unique on the market. The flow rate and sound insulation can be varied using the 3K soundproofing element. This soundproofing element consists of a ring with 3 chambers. Each chamber can be opened separately to flexibly adjust the system to flow rate and sound requirements. The element is 80 mm thick, and can be thinned according to the wall thickness.

Humidity, temperature, air quality & pressure

### 4-IN-1 SENSOR TECHNOLOGY

**i** Fine sensors record humidity, temperature, air quality (VOCs)\* and air pressure. The fans are then turned up or down fully automatically based on the state of the ambient air. Users can switch between "quick ventilation" mode (fan turns in one direction) and "heat recovery" mode (fan alternates between two directions). At high air pressure, the fans control themselves fully independently to even out any significant pressure differences.




\*In combination with ComfortControl Pro BT






### Robust and timeless **METAL OUTSIDE HOODS**


The robust outside hoods made of high quality stainless steel are available in brushed steel, white (RAL 9016) and anthracite (RAL 7016) options. The minimum wall thickness is 230 mm. 

### For maximum sound insulation **SOUND INSULATION MAT**

 With the integrated sound insulation mat, the silentAir sound insulating ventilation system achieves maximum sound insulation values. The double flow deflection of the facade element and the mat's special absorbent material mean that exterior noise is almost completely absorbed. The sound insulation mat can be easily inserted into the reveal channel and removed again for hygienic cleaning.



### The pattress box is eliminated **TOP-HAT RAIL POWER SUPPLY UNIT**

To avoid having a pattress box, a top-hat rail power supply unit  can be used instead of a flush mounted power supply unit. The power supply unit is then installed directly in the fuse box. This type of installation only requires a slot (or cable duct) in the wall from the fuse box to the control unit.



Maximum feel-good factor with getAir®



**get Air®**

**getAir GmbH**

Krefelder Straße 670 | 41066 Mönchengladbach

+49 2161 990 90 - 0 | info@getair.eu | www.getair.eu

MADE IN GERMANY