

Specialist Water Supply Systems

PP-R & PP-RCT Pipe Systems



Ensure reliability

Specialist Water Supply Systems



Protecting the source

Water is the source for life and comfort. Creating a pipe system for supplying water is now more of an accomplishment than ever.

Today, your clients are more demanding and end-user expectations are higher, while legislative and environmental compliance place additional pressures on construction teams.

Increasingly, water supply systems are called upon to go beyond basic supply to deal with drinking water, hot tap water and sanitary applications requiring special treatment.

This is Specialist Water Supply.

Wefatherm believes that acknowledging the specific challenges you face - and identifying the dedicated expertise and resources that are required to overcome them - is the first step to protect this source.

Together we can help you to ensure reliability.



Maintaining your reputation

As a Consulting Engineer, your reputation depends on ensuring the water supply system you want installed delivers the expected quality and comfort.

When installing water supply systems, your position near the completion of a project increases the pressure on getting the job done on time and on budget.

Wefatherm offers you the reassurance of providing the right solution to tackle even the most complex challenges and realise the outcome you want.

For confidence, not compromise.



Demand a specialist

Today the buildings are getting complex, making the (drinking) water systems ever more complex. From multi story buildings, offices to single occupant houses, Wefatherm is more than a pipe system. To make today's complex installations demands a combination of cost-effective pipe design, applied technology and dedicated training.

The Wefatherm PP-R pipe systems can be applied for typical domestic water supply systems:



Drinking water

Drinking water is considered fresh water up to a temperature of 25°C for drinking and preparing food.



Hot tap water

Hot tap water is heated drinking water up to a temperature of 60°C.



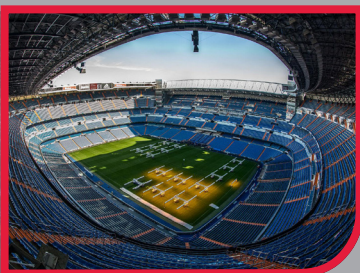
Sanitary applications

For domestic appliances, such as sanitary flush systems, washing and irrigation, drinking water quality is not required.



Ensure reliability

Wefatherm PP-R water supply systems have been used for many years in areas of application where the pipe system has to meet high standards of durability and reliability. Numerous prestige buildings have been equipped with a Wefatherm system. Over 30 years of experience in water supply systems, focussing on innovation, quality and dedication: that is Wefatherm GmbH.



Leading the way through innovation and quality

Wefatherm has always been focussed on innovation and quality, making 'Made in Germany' more than just a phrase by really living up to it. Offering a full range PP-R system and our latest development of injection moulded large bore fittings are the living proof of this.

Quality products

The Wefatherm PP-R pipe system is developed and manufactured within an ISO 9001 Quality Assurance system and complies with the ISO15874 and DIN8077/8078 standards. And they are certified by DVGW and carries numerous international recognised approvals.



Quality people

With a clear focus on meeting the demanding specifications of consulting engineers, the Wefatherm team is a key element in the successful delivery of our knowledge through consultation, support processes and the application of leading technologies.

Wefatherm is focused on delivering quality all the way from product to support.



The Wefatherm company and the modern production facilities are located in Beverungen, a town in North Rhine-Westphalia, in the heart of Germany.

Beverungen is known for its vast, recreational landscapes, situated right by the river "Weser".

Employees can enjoy various leisure activities, from mountain biking to hiking, canoeing, and swimming.



Quality systems

Naturally, you want peace of mind after the design and installation of your water supply systems. Wefatherm's combination of up-front training of consulting engineers and installers, together with on-site project support and on-site inspections (if required) means that working with Wefatherm provides you with maximum quality installed.

Wefatherm water supply systems ensure:

- hygienic reliable drinking water
- long term uninterrupted system use
- avoiding nuisance like noise
- preventing loss of water or wasting energy

Wefatherm offers two systems for floor distribution, riser mains and connections to risers.



d20-125 mm socket weld and electrofusion



d160-315 mm butt weld and electrofusion

Setting the standard

PP-R

For more than 30 years, Polypropylene Random Copolymer (PP-R) has been applied successfully for hot and cold water applications in countries worldwide. The combination of properties such as resistance to internal pressure, flexibility and impact have made PP-R the material of choice for safe and reliable long-lasting installations. No wonder that PP-R has been continuously replacing traditional materials like copper and galvanized steel over the last decades.

Benefits of PP-R:

- Service life according to tests performed under ISO 15874
- No contact corrosion when exposed to iron particles
- Taste and odor neutral
- Bacteriologically neutral
- Fast and easy installation
- Entire plastic systems available
- Good chemical resistance
- Low tendency to incrustations



PP-RCT

PP-RCT is the abbreviation for Polypropylene Random Copolymer with modified crystalline structure and enhanced temperature performance. The special fine and homogeneous crystal structure of the PP-RCT material improves the mechanical characteristics of the material.

Benefits of PP-RCT:

- PP-RCT material has an improved stress resistance at elevated temperatures with a minimum required strength (MRS) value of 11,2 MPa. And more importantly, the critical required strength (CRS) at 70°C and 50 years is 5 MPa. PP-RCT pipe systems can be operated at higher operating pressures, ranging from factor 1,25 to 2,5 at temperatures >60°C.
- The improved long-term strength of the PP-RCT material leads to a more economic set of dimensions of the pipe system. It enables designers to select thinner wall pipes with an increased flow capacity or smaller diameter pipes.



Lighter pipe systems are easier and quicker to install.

- Also important, the substantially lower material usage provides an additional contribution to the conservation of resources supporting a sustainable environment.

Temp. (°C)	σ	σ	MRS factor
	PP-R N/mm ²	PP-RCT N/mm ²	
10	11,5	13,3	1,16
20	9,7	11,6	1,19
30	8,2	10,0	1,21
40	6,9	8,5	1,23
50	5,8	7,3	1,25
60	4,9	6,1	1,26
65	4,1	5,6	1,38
70	3,2	5,1	1,58
75 *	2,6	4,7	1,81
80 *	2,1	4,3	2,05
85 *	1,7	3,9	2,28
90 *	1,4	3,5	2,54
95 *	1,1	3,2	2,80

(* life cycle <50 years)



The right choice

For every application, temperature and pressure, Wefatherm offers the right type of pipe.

Standard pipe

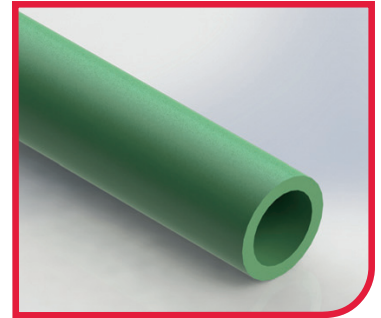
This is the traditional mono layer pipe as described in the standards ISO 15874 and DIN8077/8078. The international product certification applies on this pipe wall type.

- PP-R available in SDR 6 - 7,4 - 11
- PP-RCT available in SDR 7,4 - 11
- Thermal expansion factor 0,150 mm/m.K

Mono layer

PP-R d20-125 mm

PP-RCT d20-315 mm



Fiber pipe

This is a three-layer pipe of which the middle layer is enforced with glass fiber.

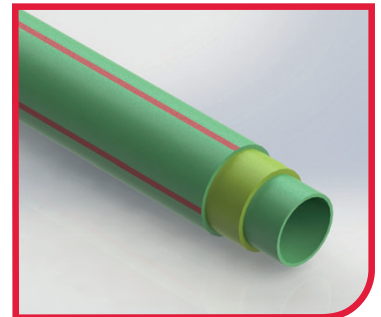
The production of these pipes is continuously surveyed since 1998 by the South-German Plastics Centre (SKZ), Würzburg.

- PP-R available in SDR 7,4
- PP-RCT available in SDR 9 - 11
- Thermal expansion factor 0,035 mm/m.K
- Less bracketing
- Higher thermal stability

Marking

4 red stripes

<i>External layer</i>	<i>Middle layer</i>	<i>Inner layer</i>
PP-R/PP-RCT	Glass fiber compound	PP-R/PP-RCT



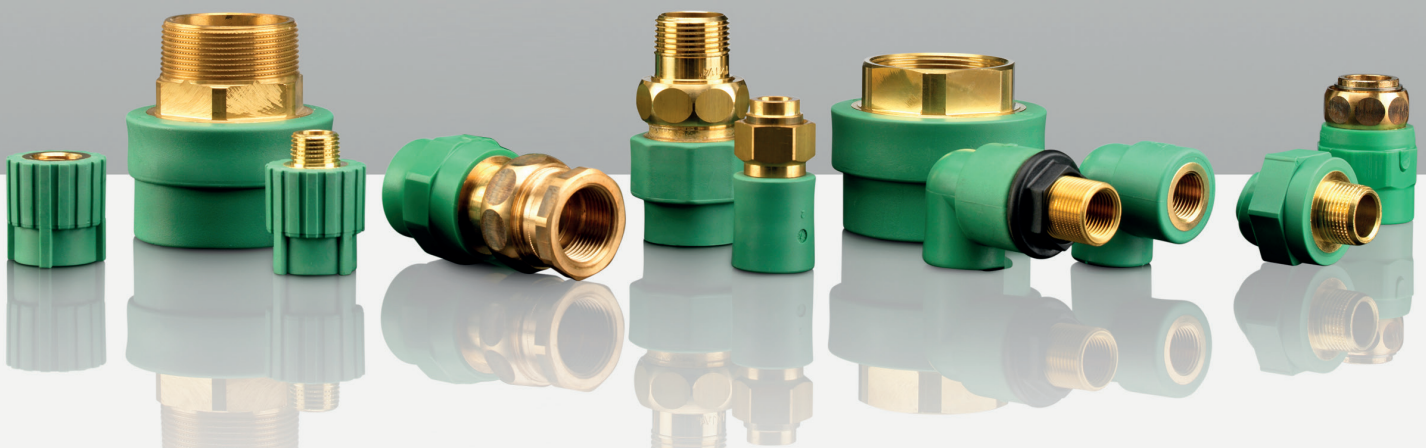
Material Type SDR	PP-R STD 6	PP-R STD 7.4	PP-R Fibre 7.4	PP-RCT STD 7.4	PP-RCT Black Fibre 7,4	PP-RCT Fibre 9	PP-R STD 11	PP-RCT STD 11	PP-RCT Fibre 11	PP-RCT Black Fibre 11	PP-RCT Fibre 11
Colour	Green	Green	Green	Green	Black	Green	Green	Green	Green	Black	Grey
20	●	●	●	●	●		●				●
25	●	●	●	●	●		●				●
32	●	●	●	●		●	●			●	●
40	●	●	●	●		●	●			●	●
50	●	●	●	●		●	●			●	●
63	●	●	●	●		●	●			●	●
75	●	●	●	●		●	●			●	●
90	●	●	●	●		●	●			●	●
110	●	●	●	●		●	●			●	●
125	●	●	●	●		●	●			●	●
160								●	●	●	●
200								●	●	●	
250								●	●	●	
315								●			

Maximum Operating Pressure (bar) according standard ISO 15874											
Material Type SDR	PP-R STD 6	PP-R STD 7.4	PP-R Fibre 7.4	PP-RCT STD 7.4	PP-RCT Black Fibre 7,4	PP-RCT Fibre 9	PP-R STD 11	PP-RCT STD 11	PP-RCT Fibre 11	PP-RCT Black Fibre 11	PP-RCT Fibre 11
Class 1	10	8	8	10	10	8	-	6	6	6	6
Class 2	8	6	6	10	10	6	-	6	6	6	6
Class 4	10	10	10	10	10	8	-	6	6	6	6
Class 5	6	6	6	8	8	6	-	4	4	4	4
20 °C / 50 years	10	10	10	10	10	10	10	10	10	10	10

Class 1 hot water supply 60°C - class 2 hot water supply 70°C - class 4 low temperature heating up to 60°C - class 5 high temperature heating up to 80°C.

Maximum Operating Pressure (bar) according standard DIN 8077											
Material Type SDR	PP-R STD 6	PP-R STD 7.4	PP-R Fibre 7.4	PP-RCT STD 7.4	PP-RCT Black Fibre 7,4	PP-RCT Fibre 9	PP-R STD 11	PP-RCT STD 11	PP-RCT Fibre 11	PP-RCT Black Fibre 11	PP-RCT Fibre 11
SF 1,50-20 °C	25,7	20,4	20,4	24,3	24,3	19,3	12,9	15,3	15,3	15,3	15,3
SF 1,50-70 °C	8,5	6,7	6,7	10,7	10,7	8,5	4,2	6,8	6,8	6,8	6,8
SF 1,25-20 °C	30,9	24,5	24,5	29,2	29,2	23,1	15,4	18,4	18,4	18,4	18,4
SF 1,25-70 °C	10,2	8,1	8,1	12,9	12,9	10,2	5,1	8,1	8,1	8,1	8,1

SF = Safety (Design) Factor - permanent temperature over 50 years Design Lifetime



Pipes PP-R

Pipe SDR6 L4m^{*)}



d x e	Item Code
20 x 3,4	5155 20002
25 x 4,2	5155 20003
32 x 5,4	5155 20004
40 x 6,7	5155 20005
50 x 8,3	5155 20006
63 x 10,5	5155 20007
75 x 12,5	5155 20008
90 x 15,0	5155 20009
110 x 18,3	5155 20010
125 x 20,8	5155 20011

^{*)} L3m and L5,8m are available

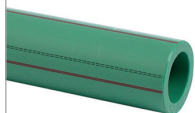
Pipe SDR7,4 L4m^{*)}



d x e	Item Code
20 x 2,8	5155 20101
25 x 3,5	5155 20102
32 x 4,4	5155 20103
40 x 5,5	5155 20104
50 x 6,9	5155 20105
63 x 8,6	5155 20106
75 x 10,3	5155 20107
90 x 12,3	5155 20108
110 x 15,1	5155 20109
125 x 17,1	5155 20110

^{*)} L5,8m is available

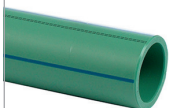
Pipe fiber SDR7,4 L4m^{*)}



d x e	Item Code
20 x 2,8	5155 20150
25 x 3,5	5155 20151
32 x 4,4	5155 20152
40 x 5,5	5155 20153
50 x 6,9	5155 20154
63 x 8,6	5155 20155
75 x 10,3	5155 20156
90 x 12,3	5155 20157
110 x 15,1	5155 20158
125 x 17,1	5155 20159

^{*)} L5,8m is available

Pipe SDR11 L4m



d x e	Item Code
20 x 1,9	5155 20050
25 x 2,3	5155 20051
32 x 2,9	5155 20052
40 x 3,7	5155 20053
50 x 4,6	5155 20054
63 x 5,8	5155 20055
75 x 6,8	5155 20056
90 x 8,2	5155 20057
110 x 10,0	5155 20058
125 x 11,4	5155 20059

Pipes PP-RCT

Pipe SDR7,4 L4m



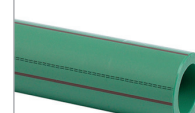
d x e	Item Code
20 x 2,8	5152 25201
25 x 3,5	5152 25202
32 x 4,4	5152 25203
40 x 5,5	5152 25204
50 x 6,9	5152 25205
63 x 8,6	5152 25206
75 x 10,3	5152 25207
90 x 12,3	5152 25209
110 x 15,4	5152 25211
125 x 17,1	5152 25212

Pipe black fiber SDR7,4 L4m



d x e	Item Code
20 x 2,8	5150 20200
25 x 3,5	515020201

Pipe fiber SDR9 L4m



d x e	Item Code
32 x 3,6	5152 27303
40 x 4,5	5152 27304
50 x 5,6	5152 27305
63 x 7,1	5152 27306
75 x 8,4	5152 27307
90 x 10,1	5152 27309
110 x 12,3	5152 27311
125 x 14,0	5152 27312

Pipe black fiber SDR11 L4m



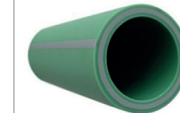
d x e	Item Code
32 x 2,9	5150 20202
40 x 3,7	5150 20203
50 x 4,6	5150 20204
63 x 5,8	5150 20205
75 x 6,8	5150 20206
90 x 8,2	5150 20207
110 x 10,0	5150 20208
125 x 11,4	5150 20209
160 x 14,6	5150 20210
200 x 18,2	5150 20211
250 x 22,7	5150 20212

Pipe Wefaklim fiber SDR11 L4m



d x e	Item Code
20 x 2,8	5150 20130
25 x 3,5	5150 20131
32 x 2,9	5150 20132
40 x 3,7	5150 20133
50 x 5,6	5150 20134
63 x 5,8	5150 20135
75 x 6,8	5150 20136
90 x 8,2	5150 20137
110 x 10,0	5150 20138
125 x 11,4	5150 20139
160 x 14,6	5150 20140

Pipe fiber SDR11 L4m



d x e	Item Code
160 x 14,6	5152 27016
200 x 18,2	5152 27020
250 x 22,7	5152 27025

Pipe SDR11 L4m



d x e	Item Code
160 x 14,6	5152 25016
200 x 18,2	5152 25020
250 x 22,7	5152 25025
315 x 28,6 ^{*)}	5152 25031

^{*)} l=5,8 m

Fittings

Cross



d	Item Code
32	5152 42403
40	5155 25102
50	5155 25103
63	5152 42406

Bend 90°



d	Item Code
20	5155 21101
25	5155 21102
32	5155 21103
40	5155 21104

Distributor manifold 4x



d x d ₁	Item Code
32 x 20	5152 42603

Elbow 45° s/m



d	Item Code
20	5155 22100
25	5155 22101
32	5155 22102

Bridge m/m



d	Item Code
20	5155 20501
25	5155 20502
32	5155 20503

Distributor manifold 4x female



d x R _p	Item Code
32 x 1/2"	5152 42703
40 x 1/2"	5155 20606

Elbow 90° s/m



d	Item Code
20	5155 22001
25	5155 22002
32	5155 22003

Bridge s/s



d	Item Code
20	5155 70201
25	5155 70202

Distributor manifold 4x male



d x R	Item Code
32 x 1/2"	5155 20608
40 x 1/2"	5155 20610

Elbow 45°



d	Item Code
20	5155 23002
25	5155 23003
32	5155 23004
40	5155 23005
50	5155 23006
63	5155 23007
75	5155 23008
90	5155 23009
110	5155 23010
125	5155 23011



Long	
d	Item Code
160	5152 41316
200	5152 41320
250	5152 41325
315	5152 41331

Elbow 90°



d	Item Code
20	5155 21002
25	5155 21003
32	5155 21004
40	5155 21005
50	5155 21006
63	5155 21007
75	5155 21008
90	5155 21009
110	5155 21010
125	5155 21011



Bend - short	
d	Item Code
160	5152 41116
200	5152 41120
250	5152 41125
315	5152 41131



Elbow - long	
d	Item Code
160	5152 41016
200	5152 41020
250	5152 41025
315	5152 41031

Socket



d	Item Code
20	5155 27002
25	5155 27003
32	5155 27004
40	5155 27005
50	5155 27006
63	5155 27007
75	5155 27008
90	5155 27009
110	5155 27010
125	5155 27011

End cap



d	Item Code
20	5155 28002
25	5155 28003
32	5155 28004
40	5155 28005
50	5155 28006
63	5155 28007
75	5155 28008
90	5155 28009
110	5155 28010
125	5155 28011



Long	
d	Item Code
160	5152 42216
200	5152 42220
250	5152 42225
315	5152 42231

Tee 90°



d	Item Code
20	5155 24002
25	5155 24003
32	5155 24004
40	5155 24005
50	5155 24006
63	5155 24007
75	5152 41507
90	5152 41509
110	5152 41511
125	5152 41512



Short	
d	Item Code
160	5152 41616
200	5152 41620
250	5152 41625
315	5152 41631



Long	
d	Item Code
160	5152 41516
200	5152 41520
250	5152 41525
315	5152 41531

Reducer



d x d ₁	Item Code
25 x 20	5155 26003
32 x 20	5155 26004
32 x 25	5155 26005
40 x 20	5155 26006
40 x 25	5155 26007
40 x 32	5155 26008
50 x 20	5155 26009
50 x 25	5155 26010
50 x 32	5155 26011
50 x 40	5155 26012
63 x 40	5155 26013
63 x 25	5155 26014
63 x 32	5155 26015
63 x 50	5155 26016
75 x 50	5155 26017
75 x 63	5155 26018
90 x 63	5155 26019
90 x 75	5155 26020
110 x 90	5155 26025
125 x 110	5155 26026



Short	
d x d ₁	Item Code
200 x 160	5152 41934
250 x 160	5152 41936
250 x 200	5152 41937



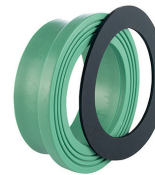
Long	
d x d ₁	Item Code
160 x 110	5152 41830
160 x 125	5152 41831
200 x 160	5152 41834
250 x 160	5152 41836
250 x 200	5152 41837
315 x 250	5152 41840

Tee reduced 90°



d x d ₁ x d	Item Code
25 x 20 x 25	5155 25003
25 x 20 x 20	5155 25024
25 x 25 x 20	5155 25025
32 x 20 x 32	5155 25004
32 x 25 x 32	5155 25005
32 x 32 x 25	5155 25023
32 x 20 x 25	5155 25026
32 x 25 x 25	5155 25028
40 x 20 x 40	5155 25006
40 x 25 x 40	5155 25007
40 x 32 x 40	5155 25008
50 x 20 x 50	5155 25029
50 x 25 x 50	5155 25009
50 x 32 x 50	5155 25010
50 x 40 x 50	5155 25011
63 x 20 x 63	5155 25012
63 x 25 x 63	5155 25013
63 x 32 x 63	5155 25014
63 x 40 x 63	5155 25015
63 x 50 x 63	5155 25016
75 x 20 x 75	5152 41720
75 x 25 x 75	5152 41721
75 x 32 x 75	5152 41722
75 x 40 x 75	5152 41723
75 x 50 x 75	5152 41724
75 x 63 x 75	5152 41725
90 x 63 x 90	5152 41728
90 x 75 x 90	5152 41729
110 x 63 x 110	5152 41731
110 x 75 x 110	5152 41732
110 x 90 x 110	5152 41733
125 x 75 x 125	5152 41735
125 x 90 x 125	5152 41736
125 x 110 x 125	5152 41737

Flange sleeve with gasket



d	Item Code
32	5155 28020
40	5155 28021
50	5155 28022
63	5155 28023
75	5155 28024
90	5155 28025
110	5155 28026
125	5155 28027

Stub end



Short	
d	Item Code
160	5152 42116
200	5152 42120
250	5152 42125
315	5152 42131



Long	
d	Item Code
160	5152 42016
200	5152 42020
250	5152 42025
315	5152 42031

Electrofusion coupler



d	Item Code
20	5152 50201
25	5155 50102
32	5155 50103
40	5152 50204
50	5155 50105
63	5155 50106
75	5152 50207
90	5152 50209
110	5155 50109
125	5155 50110



d	Item Code
160	5152 50216
200	5152 50220
250	5152 50225
315	5152 50131

Transition fittings

Transition round female



d x R _p	Item Code
20 x 1/2"	5155 28101
20 x 3/4"	5155 28102
25 x 1/2"	5155 28103
25 x 3/4"	5155 28104
32 x 3/4"	5155 28105

Transition elbow 90° female



d x R _p	Item Code
20 x 1/2"	5155 28301
20 x 3/4"	5155 28302
25 x 1/2"	5155 28303
25 x 3/4"	5155 28304
32 x 3/4"	5155 28305
32 x 1"	5155 28306

Union brass female



d x R _p	Item Code
20 x 1/2"	5152 45402
25 x 3/4"	5152 45405
32 x 1"	5152 45408
40 x 1 1/4"	5152 45411
50 x 1 1/2"	5152 45413
63 x 2"	5152 45415

Transition hexagon female



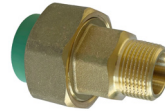
d x R _p	Item Code
32 x 1"	5155 28204
40 x 1 1/4"	5155 28205
50 x 1 1/2"	5155 28206
63 x 2"	5155 28207
75 x 2"	5155 28208
125 x 5"	5155 28213

Back plate elbow female



d x R _p	Item Code
20 x 1/2"	5155 29002
20 x 3/4"	5155 29003
25 x 1/2"	5155 29004
25 x 3/4"	5155 29005

Union brass male



d x R _p	Item Code
20 x 1/2"	5152 45302
25 x 3/4"	5152 45305
32 x 1"	5152 45308
40 x 1 1/4"	5152 45311
50 x 1 1/2"	5152 45313
63 x 2"	5152 45315

Transition hexagon male



d x R	Item Code
32 x 1"	5155 29204
40 x 1 1/4"	5155 29205
50 x 1 1/2"	5155 29206
63 x 2"	5155 29207
75 x 2 1/2"	5155 29208
90 x 3"	5155 29209
110 x 3"	5155 29210
110 x 4"	5155 29211
125 x 5"	5152 44621

Double elbow tap connector



d x R _p	Item Code
20 x 1/2"	5155 29902
25 x 1/2"	5155 29904

Pipe union brass female



d x R _p	Item Code
40 x 1 1/4"	5152 45011
50 x 1 1/2"	5152 45013
63 x 2"	5152 45015
75 x 2 1/2"	5152 45017

Transition elbow 90° male



d x R	Item Code
20 x 1/2"	5155 28401
20 x 3/4"	5155 28402
25 x 1/2"	5155 28403
25 x 3/4"	5155 28404
32 x 3/4"	5155 28405
32 x 1"	5155 28406

Pipe union brass male



d x R _p	Item Code
40 x 1 1/4"	5152 45111
50 x 1 1/2"	5152 45113
63 x 2"	5152 45115
75 x 2 1/2"	5152 45117

Transition round male



d x R	Item Code
20 x 1/2"	5155 29101
20 x 3/4"	5155 29102
25 x 1/2"	5155 29103
25 x 3/4"	5155 29104

Transition tee female



d x R _p	Item Code
20 x 1/2"	5155 29301
20 x 3/4"	5155 29302
25 x 1/2"	5155 29303
25 x 3/4"	5155 29304
32 x 3/4"	5155 29305
32 x 1"	5155 29306

Union brass nut



d x G	Item Code
20	5152 45601
25	5152 45602
32	5152 45603
40	5152 45604
50	5152 45605
63	5152 45606

Pipe connection brass nut female



d x G	Item Code
20 x 3/4"	5155 29801
20 x 1"	5155 29802
25 x 3/4"	5155 29803
25 x 1"	5155 29804
32 x 1"	5155 29805
32 x 1 1/4"	5155 29806
40 x 1 1/2"	5155 29807
50 x 1 3/4"	5155 29808
63 x 2 3/8"	5155 29809
75 x 2 3/4"	5152 45217

Weld-in saddles PP-R

Weld-in saddle



d x d ₁	Item Code
40 x 20	5155 28052
40 x 25	5155 28053
50 x 20	5155 28054
50 x 25	5155 28055
63 x 20	5155 28056
63 x 25	5155 28057
75 x 20	5155 28058
75 x 25	5155 28059
90 x 20	5155 28060
90 x 25	5155 28061
110 x 20	5155 28062
110 x 25	5155 28063
125 x 20	5155 28064
125 x 25	5155 28065

Weld-in saddle female



d x R _p	Item Code
40 x 1/2"	5155 28071
50 x 1/2"	5155 28072
63 x 1/2"	5155 28073
75 x 1/2"	5155 28074
90 x 1/2"	5155 28075
110 x 1/2"	5155 28076
125 x 1/2"	5155 28077
40 x 3/4"	5155 28171
50 x 3/4"	5155 28172
63 x 3/4"	5155 28173
75 x 3/4"	5155 28174
90 x 3/4"	5155 28175
110 x 3/4"	5155 28176
125 x 3/4"	5155 28177

Weld-in saddle male



d x R	Item Code
40 x 1/2"	5155 28081
50 x 1/2"	5155 28082
63 x 1/2"	5155 28083
75 x 1/2"	5155 28084
90 x 1/2"	5155 28085
110 x 1/2"	5155 28086
125 x 1/2"	5155 28087
40 x 3/4"	5155 28181
50 x 3/4"	5155 28182
63 x 3/4"	5155 28183
75 x 3/4"	5155 28184
90 x 3/4"	5155 28185
110 x 3/4"	5155 28186
125 x 3/4"	5155 28187

Weld-in saddles PP-RCT

Weld-in saddle



d x d ₁	Item Code
63-125 x 32	5152 43007
75-125 x 32	5152 43010
75-125 x 40	5152 43011
90-125 x 50	5152 43015
110-125 x 63	5152 43024
160-250 x 20	5152 43026
160-250 x 25	5152 43027
160-250 x 32	5152 43028
160-250 x 40	5152 43029
160-250 x 50	5152 43030
160-250 x 63	5152 43031
315 x 32	5152 43039
315 x 40	5152 43040
315 x 50	5152 43041
315 x 63	5152 43042

Weld-in saddle female



d x d ₁	Item Code
75-125 x 1"	5152 43110
90-125 x 1 1/4"	5152 43114
90-125 x 1 1/2"	5152 43115
110-125 x 1 1/2"	5152 43118
110-125 x 2"	5152 43124
160-250 x 1/2"	5152 43126
160-250 x 3/4"	5152 43127
160-250 x 1"	5152 43128
160-250 x 1 1/4"	5152 43129
160-250 x 1 1/2"	5152 43130
160-250 x 2"	5152 43131
315 x 3/4"	5152 43138
315 x 1"	5152 43139
315 x 1 1/4"	5152 43140
315 x 1 1/2"	5152 43141
315 x 2"	5152 43142

Weld-in saddle male



d x d ₁	Item Code
75-125 x 1"	5152 43210
75-125 x 1 1/4"	5152 43211
90-125 x 1 1/4"	5152 43214
90-125 x 1 1/2"	5152 43215
110-125 x 1 1/2"	5152 43218
110-125 x 2"	5152 43224
160-250 x 1/2"	5152 43226
160-250 x 3/4"	5152 43227
160-250 x 1"	5152 43228
160-250 x 1 1/4"	5152 43229
160-250 x 1 1/2"	5152 43230
160-250 x 2"	5152 43231
315 x 3/4"	5152 43238
315 x 1"	5152 43239
315 x 1 1/4"	5152 43240
315 x 1 1/2"	5152 43241
315 x 2"	5152 43242

Valves

Stop valve surface assembly



d	Item Code
20	5155 29500
25	5155 29501
32	5155 29502

Stop valve concealed assembly



d	Item Code
20	5155 29510
25	5155 29511
32	5155 29512

H = 90 mm

Stop valve concealed assembly



d	Item Code
20	5155 29525
25	5155 29526
32	5155 29527

H = 100 mm

Stop valve tamper resistant



d	Item Code
20	5155 29515
25	5155 29516
32	5155 29517

Y-valve



d	Item Code
25	5155 29540
32	5152 61203
40	5155 29542

Stop valve body



d	Item Code
20	5155 29530
25	5155 29531
32	5155 29532

Ball valve



d	Item Code
20	5155 25580
25	5155 25581
32	5155 25582
40	5155 25583
50	5155 25584
63	5155 25585
75	5155 25586

Double union ball valve - Dual Block®



d	Item Code
20	5152 65101
25	5152 65102
32	5152 65103
40	5152 65104
50	5152 65105
63	5152 65106

Accessories

Extension 95 mm



Item Code
5150 29520

Extension set 30 mm



Item Code
5150 29521
5150 29522

Pipe clip



d	Item Code
20	5155 34401
25	5155 34402
32	5155 34403

Profile backing ring PP with ductile iron core



d	Item Code
32	5150 28040
40	5150 28041
50	5150 28042
63	5150 28043
75	5150 28044
90	5150 28045
110	5150 28046
125 ¹⁾	5150 28047

¹⁾ Variant with flat design

Profile backing ring PP with ductile iron core



d	Item Code
160	5152 52016
200	5152 52020
250	5152 52025
315	5152 52031

Profile gasket NBR with steel core



d	Item Code
160	5152 52216
200	5152 52220
250	5152 52225
315	5152 52231

PP-R pin for pipe repair



d	Item Code
7/11	5155 28030

Plug for pressure test



d	Item Code
1/2" red	5150 36100
1/2" blue	5150 36101

Tools

Welding tool

d	Item Code
20	5150 30002
25	5150 30003
32	5150 30004
40	5150 30005
50	5150 30006
63	5150 30007
75	5150 30008
90	5150 30009
110	5150 30010
125	5150 30011

Welding tool for weld-in saddles

d x d ₁	Item Code
40 x 25	5150 30051
50 x 25	5150 30052
63 x 25	5150 30053
75 x 25	5150 30054
90 x 25	5150 30055
110 x 25	5150 30056
125 x 25	5150 30057
40-63 x 32	5150 30058
75-125 x 32	5150 30059
75-125 x 40	5150 30060
75-125 x 50	5150 30061
75-125 x 63	5150 30062
160-250 x 25	5150 30065
160-250 x 32	5150 30066
160-250 x 40	5150 30067
160-250 x 50	5150 30068
160-250 x 63	5150 30069
315 x 32	5150 30166
315 x 40	5150 30167
315 x 50	5150 30168
315 x 63	5150 30169

Socket welding machine 25-125 mm

d	Item Code
25 - 125	5150 31003

Welding jig 63-125 mm

d	Item Code
63 - 125	5150 31006

Welding jig stand

Item Code
5150 31007

Depth gauge

Item Code
5199 99971

Manual welding device 20-125 mm

d	Item Code
20 - 125	5150 31005

Manual welding device 20-25 mm

d	Item Code
20 - 25	5150 31002

Manual welding device 20-63 mm

d	Item Code
20 - 63	5150 31000

Chamfering device

d	Item Code
25	5150 30075

Welding tool for repair pin

d	Item Code
7	5150 30080
11	5150 30081

Butt-welding machine 160-315 mm

d	Item Code
160 - 315	5150 31004

Electrofusion welding machine

d	Item Code
20 - 315	5150 31011

Pipe scraper set

d	Item Code
20 - 200	5150 31020

Drill

d	Item Code
25	5150 30070
32	5150 30071
40	5150 30072
50	5150 30073
63	5150 30074

Profi-cut pipe cutter 0-42 mm

d	Item Code
0 - 42	5150 32002

Pipe cutter 50-110 mm

d	Item Code
50 - 110	5150 32010

Scraper manual

Item Code
5150 31030

Wefatherm GmbH

Urentalstraße 380
D-37688 Beverungen
Germany

info@wefatherm.de
www.wefatherm.de

