



THINK VISIONARY
ACT ECOLOGICAL



FOR A SUSTAINABLE USE OF WATER

SAVE WATER

Reduce the consumption of drinking and process water – with innovative solutions from Swiss Eco Line.



SAVE ENERGY

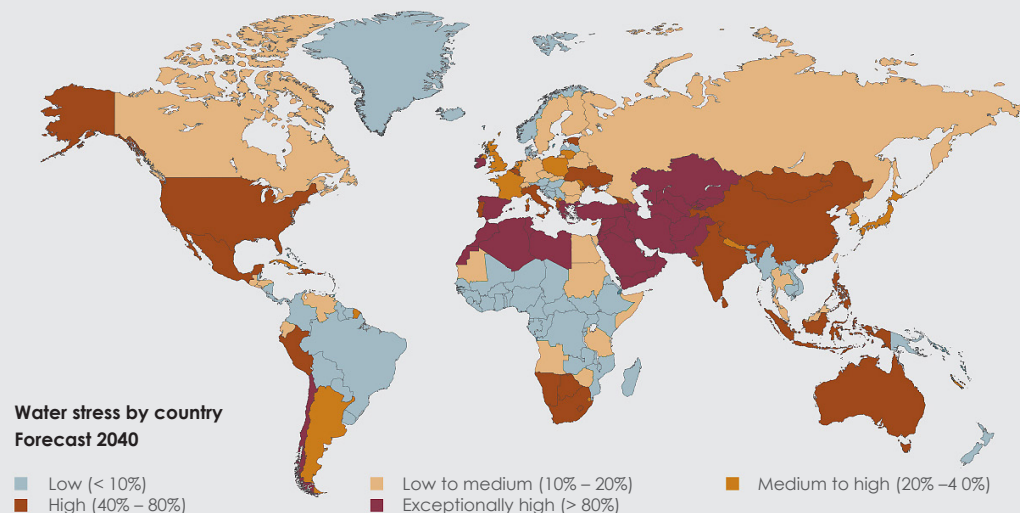
Reduce your company's energy consumption – thanks to resource-saving Swiss technology.



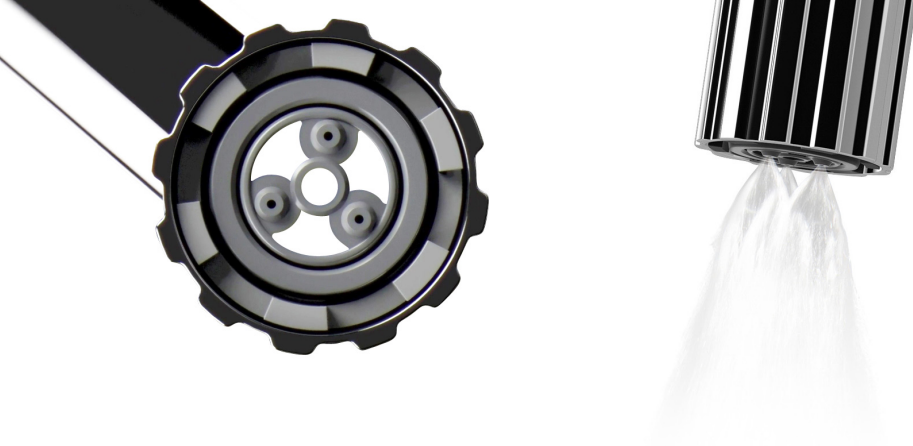
REDUCE COSTS

Benefit from lower water and energy costs – economical use of resources pays off.

SECURE TOMORROW'S
RESOURCES TODAY



Source: World Resources Institute aqueduct water risk atlas



The daily invoice

Swiss Eco Tap®
the acqua saver

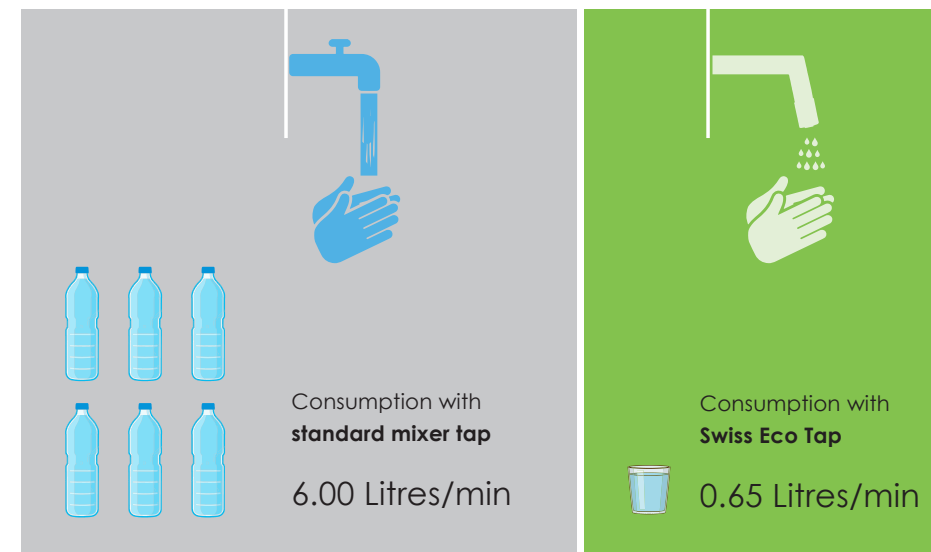
THE REVOLUTIONARY WATER TAP

Swiss Eco Tap makes hand washing particularly pleasant due to its gentle spray technology. The skin is sprayed with fine jets that efficiently remove dirt particles. Three turbulators in the tap accelerate the water jet. This makes it possible to achieve a high level of cleaning using a minimum amount of water. Swiss Eco Tap is a faucet that uses only cold water and requires no preparation for hot water.

SAVING

93 % water
100 % energy

WATER CONSUMPTION PER PERSON EVERY DAY



Number of toilet visits
per day

Ø 8 – 10

Ø 4 – 6

5 REASONS IN FAVOUR OF IT:

COSTS

Impress with cost-effective sustainability.
With Swiss Eco Tap you save water, energy and money.

ENVIRONMENTAL FRIENDLINESS

Optimise your use of resources. So that ecology
and economy go hand in hand.

ENERGY

Save on the energy costs for hot water preparation.
Opt for energy-saving cold water taps.

MAINTENANCE

Benefit from uncomplicated maintenance.
Cold water taps are less susceptible to faults.

HYGIENE

Improve hygiene with cold water taps.
Reduce the risk of bacterial growth in hot water.

**„The water jet feels pleasantly warm
despite the cold water“**

“With the Swiss Eco Tap cold water faucet, Swiss Eco Line
has anticipated the spirit of the times.”

MARC GISLER – Arosa Bergbahnen, Head of Building Management

No maintenance costs



SWISS ECOLINE®
save water, energy & resources

SAVINGS – WATER AND ENERGY

Swiss Eco Tap®
the acqua saver

INSTALLATION – TECHNICAL REQUIREMENTS

The pressure ratios in domestic water installations are about the same in most developed countries today. They are usually between 2.5 and about 4.5 bar. The following comparison is therefore calculated at 3.5 bar static pressure = 3.0 bar flow pressure.

ASSUMPTIONS OBJECT

Semi-public drinking water supply, as available in restaurants, railway stations, hospitals, airports, etc. A daily visitor frequency of 1,000 taps for hand washing is assumed. Higher and lower frequencies are therefore very easy to convert.

DATA

Water flow

Effectively adjusted flow rate for hand washing

Duration of washing hands with soap

VERSION

Water jet
Nominal volume
Water consumption
Water saving

VERSION

Water jet
Nominal volume
Water consumption
Water saving

flow
ation 30 s

SWISS ECO TAP

According to EN 200 mod.
(Cold water tap)

Only cold-water CW 15° – 20 °C
Is perceived warmer

Fully open

80 %

EcoPearl

Air mixing nozzle
3 bars: 1.80 l/min
0.90 l/min
80 %

EcoRegular

Air mixing nozzle
3 bars: 4.90 l/min
2.45 l/min
60 %

STANDARD MIXER TAP

According to EN 817
(Hot water tap)

cold CW 15 °C – warm HW 62 °C
mixed water temperature 38 °C

Half open (with air mixing nozzle IA)

25 – 30 seconds

Air mixing nozzle

3 bars: 1.80 l/min
0.90 l/min
80 %

3 bars: 4.90 l/min
2.45 l/min
60 %

**POTENTIAL SAVINGS ON WATER AND ENERGY COSTS
CHF 10,000 – 15,000.–**

A REWARDING INVESTMENT IN THE FUTURE

INDUSTRY



GASTRONOMY



BRIGHT IDEAS FOR A
GREEN FUTURE WORKING
FOR YOU EVERY DAY

LEISURE



MUNICIPALITIES



TRANSPORTATION



FACILITY MANAGEMENT





PILLAR TAP
Design Line
EcoTwist



WALL-MOUNTED TAP
Standard Line
EcoTwist



DESIGN, COMFORT + ENVIRONMENTAL AWARENESS COMBINED

PILLAR TAP IR
Design Line
EcoJet

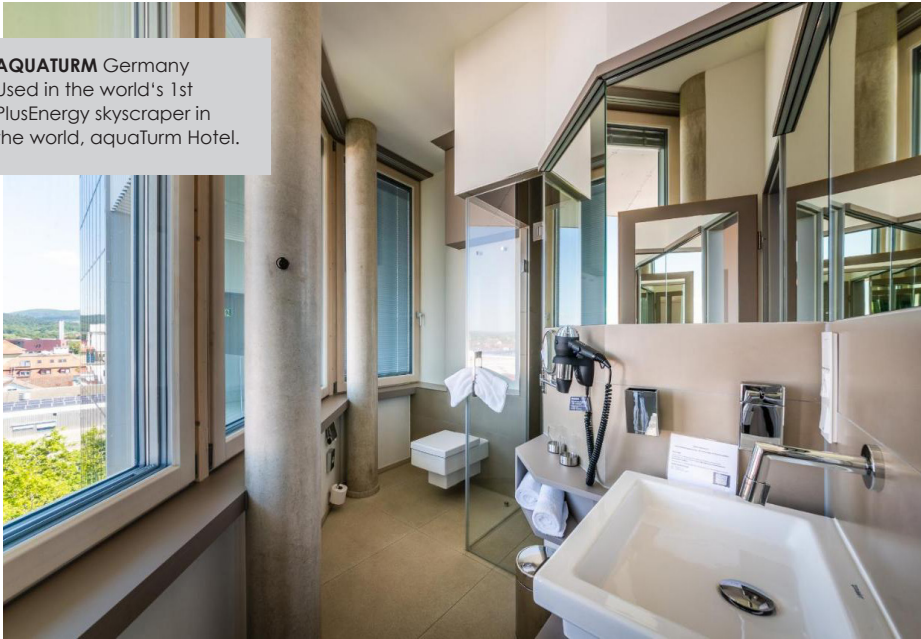


WALL-MOUNTED TAP
Design Line
EcoJet



THINK ECOLOGICAL, ACT ECONOMICAL

AQUATUM Germany
Used in the world's 1st
PlusEnergy skyscraper in
the world, aquaTurm Hotel.



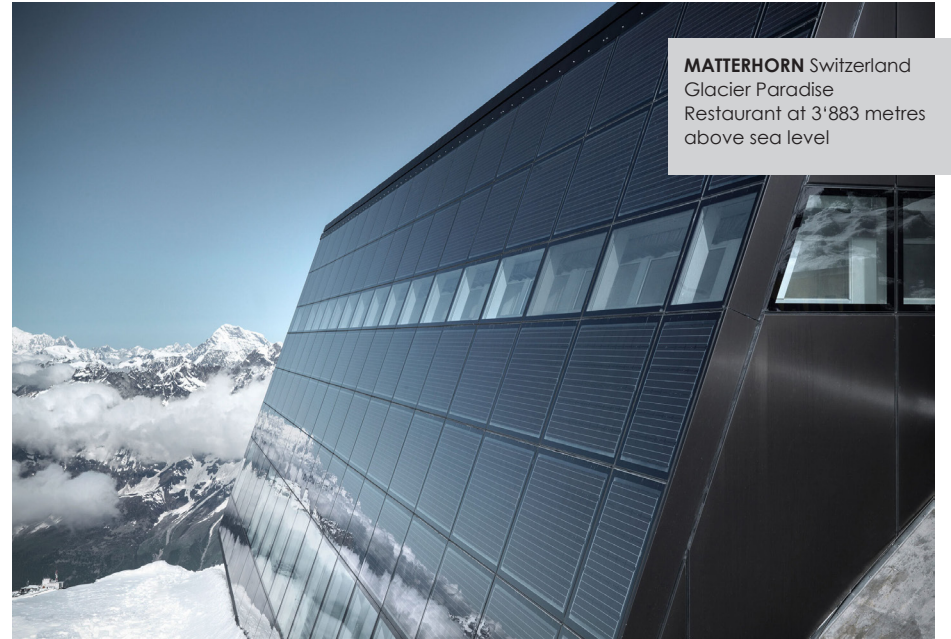
NEST Switzerland
Modular research and
and innovation building
from Empa / Eawag



TOGETHER WITH OUR CUSTOMERS



MATTERHORN Switzerland
Glacier Paradise
Restaurant at 3'883 metres
above sea level



ASD ARCHITECTS
Saudi Arabia
Modern office and
commercial building



GO GREEN

SWISS INNOVATIONS FOR THE FUTURE

BUBBLING IDEAS SINCE 2015

Swiss Eco Line is your partner for sustainable water management. We stand for quality assurance and resource conservation through advanced water treatment.

INNOVATIVE PRODUCTS

Established as a joint venture between forward-thinking companies, you benefit from holistic solutions. We develop innovative products for everyday sustainability so that you can use water efficiently and safely.

WORLDWIDE IN USE

Water scarcity is a global problem. That's why our Swiss quality products are available worldwide. Swiss Eco Line makes an international contribution to the sustainable use of water. Be part of it.

„The sustainable use of resources is not only an ethical obligation - it is also a vital investment in the future of our environment and our society.“

Stefano Boeri, architect



ACT TODAY FOR TOMORROW.
WHY NOT NOW?



SWISS **ECOLINE**[®]
save water, energy & resources

Swiss Eco Line AG
Felsenastrasse 29
CH-7000 Chur

+41 (0) 81 300 68 79
info@swissecoline.com
www.swissecoline.com