



Hamwells®

Blue

energy-saving showering



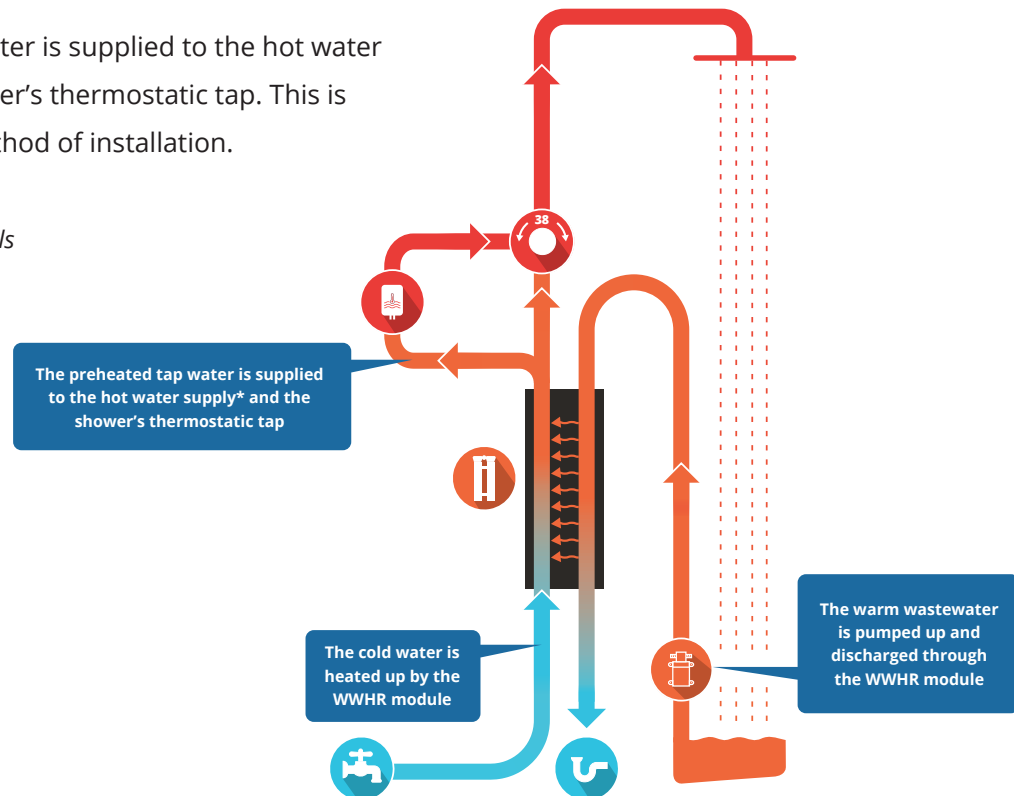
What is the Blue?

The Blue is a wastewater heat recovery (WWHR) system which reuses the residual heat from the shower wastewater. This is collected and pumped up to the WWHR module which preheats the water supply. This way, you will need less hot tap water to keep your shower at the desired temperature.

System A

The preheated tap water is supplied to the hot water supply* and the shower's thermostatic tap. This is the most efficient method of installation.

**Not supplied by Hamwells*



Suitable for any project

The Blue is available in 4 versions: the Blue 12, 16, 21 and HE. The main differences are the efficiency of the WWHR pipes and the required installation height. The system can be placed in either the technical room or bathroom and has been specifically developed to achieve the highest possible efficiency on a single floor. This makes it suitable for renovation and new construction projects, for example, in apartment complexes, prefab homes, holiday homes, hotels, healthcare institutions, sports clubs, etc.



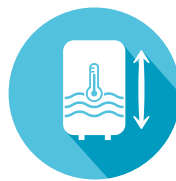
Benefits of the Blue

With the Blue you will meet nZEB requirements faster.

Saving on energy does not mean that you have to sacrifice on comfort. The Blue can, of course, be equipped with a water-saving shower head, but a rain shower with a flow of 12.5 litres per minute can also be used. In both cases, you save a lot of energy while taking a shower. Usually, because of these savings, it is possible to scale down your hot water infrastructure. So, savings on savings!



Better energy efficiency



Smaller hot water system



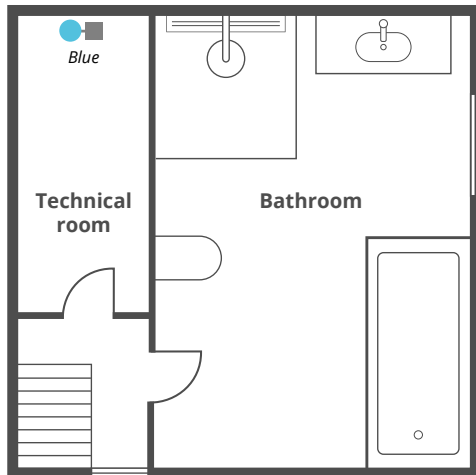
Lower energy bill



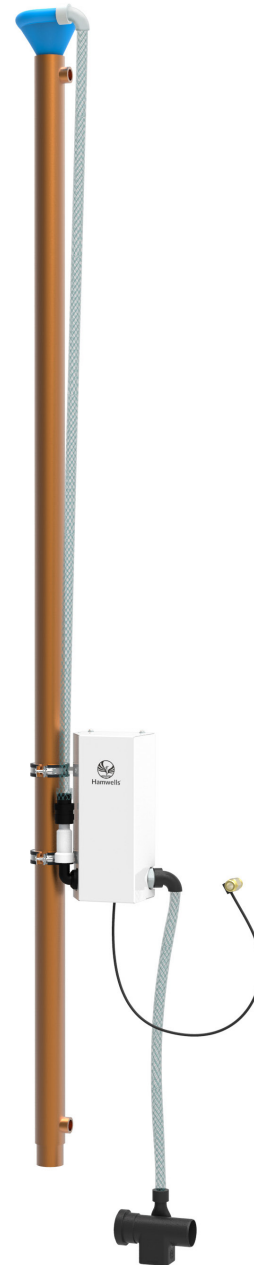
Installation in a technical room

More and more homes have a technical room. If this is in the immediate vicinity of the bathroom, it is possible to place the Blue inside this room.

The basic systems are supplied as standard including WWHR module, pump, sensor and power supply.



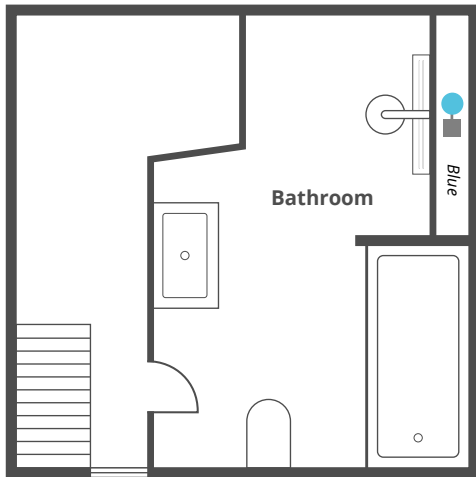
The Blue inside a technical room





Installation in the bathroom

The Blue can also be installed behind a cavity wall in the bathroom. To keep the system accessible, you can use our glass panel & thermostatic tap. Optionally, the system can be equipped with associated shower fittings and drain.



The Blue behind a wall in the bathroom



Glass panel can be easily removed for maintenance.



This is how you will save with the Blue

Providing hot water requires a lot of energy. In modern homes, this has become an increasing part of the total energy consumption and requires a large technical installation.

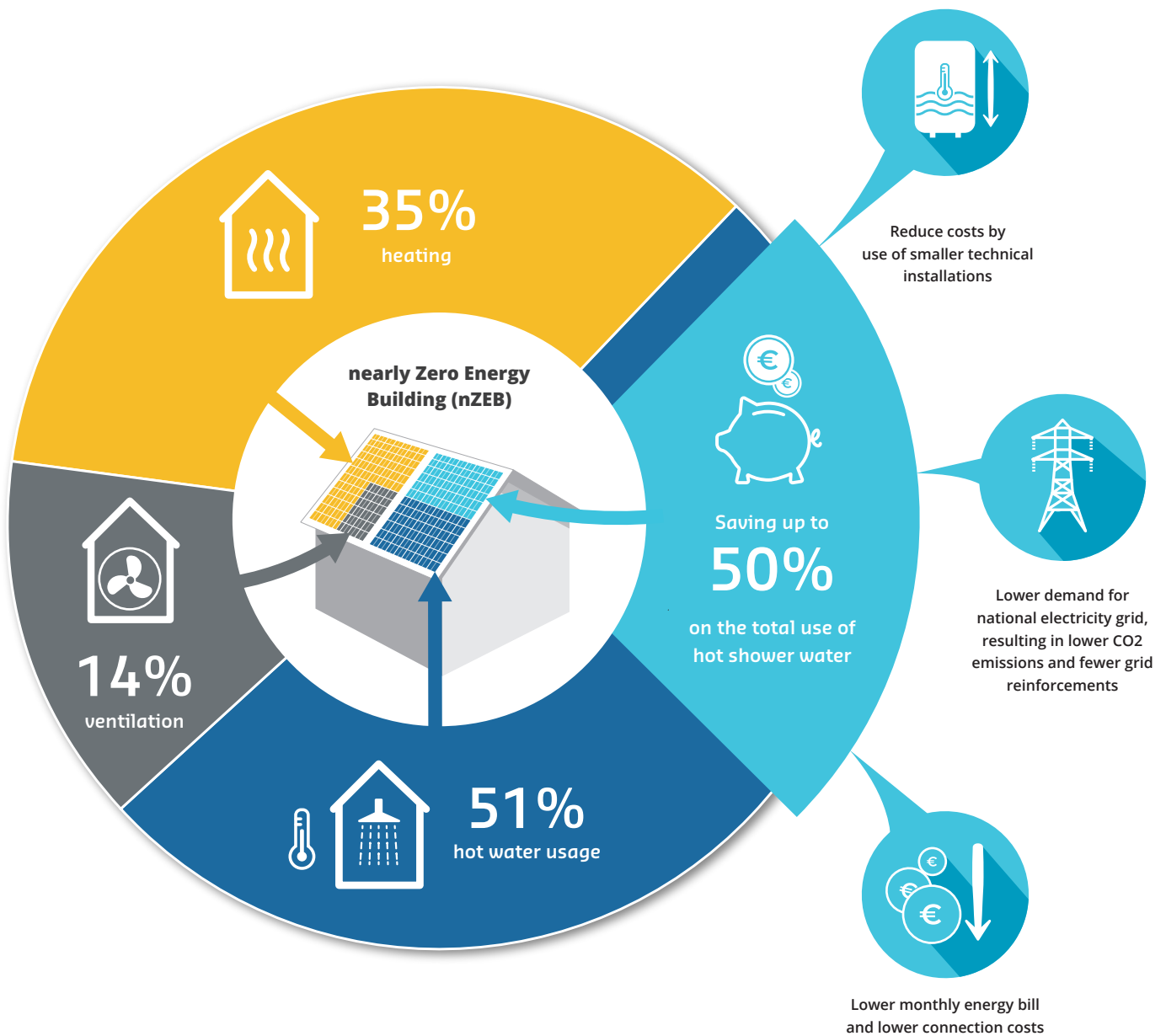
Thanks to the Blue, less hot water is used. In many cases, this means that the hot water system can be made considerably smaller. Depending on the Blue version used, a WWHR efficiency of up to 72.5% is achievable.

So, you save on both your technical installation and your energy bill.

Certification

The Blue systems use WWHR pipes that have been approved by various inspection authorities. They have therefore been provided with several certifications and can be installed in various countries within and outside the European Union.





Hamwells Nederland B.V.

Pelgrimsstraat 3, 3029 BH Rotterdam, the Netherlands

+31 85 303 6496, info@hamwells.com

www.hamwells.com



Hamwells®