



Intelligent Kitchen & Bath

 **宁波展鹰智能厨卫科技有限公司**
Ningbo Geagle Intelligent Kitchen & Bath Tech Co., Ltd

Tel : 0086-574-87844022(总机) 83068368 83092538
Fax : 0086-574-87844033 87877691
E-Mail : zy2001@chinazhanying.com
Http : // www.geagle.net.cn



CONTENT 目录

01-04 | 公司简介
Company Profile

09-14 | 手自一体厨房水龙头系列
Manual and Sensor Combined Kitchen Faucet

15-28	感应水龙头系列 Sensor Faucet Series	
15-17	手自一体水龙头 Manual and Sensor Combined Faucet	26-26 感应水龙头组件 Sensor Faucet Accessory
18-20	一体式调温感应水龙头 Integrated Cold & Hot Sensor Faucet	27-27 感应式皂液水龙头 Faucet Shaped Automatic Soap Dispenser
21-24	感应水龙头 Sensor Faucet	28-28 医用感应水龙头 Medical Sensor Faucet
25-25	MINI感应水龙头 MINI Sensor Faucet	

29-32 | 给皂器系列
Automatic Soap Dispenser Series

33-35 | 干手器系列
Hand Dryer Series

36-40	感应小便器系列 Sensor Urinal Flusher Series	
36-37	感应小便斗冲洗器（暗装） Sensor Urinal Flusher (Concealed)	39-39 感应小便斗冲洗器（明装） Sensor Urinal Flusher (Disclosed)
38-38	感应小便斗冲洗器箱体 Sensor Urinal Flusher Box	40-40 一体陶瓷感应小便斗冲洗器配件 Sensor Ceramic Urinal Flusher Accessories

41-43 | 感应冲便器系列
Sensor Toilet Flusher Series

44-44 | 自动下水控制系统
Automatic Drainage Control System

45-46 | 智能地漏系列
Intelligent Floor Drain Series

WHO

我们是谁？

公司简介

Company Profile

宁波展鹰智能厨卫科技有限公司成立于2001年，公司专业研发生产智能厨卫核心部件及成套智能产品。公司集设计、研发、制造于一体，经过二十多年的努力，在双稳态电磁阀、单片机智能控制、感应探测、超低功耗、防水、节水、节能等诸多方面都取得了很大突破，并在智能马桶冲洗阀、恒压恒流阀、电磁阀、红外控制器、防水连接线、干手器、智能水龙头、智能补水地漏等方面获得四十多项发明、实用新型及外观专利。公司现有智能厨房水龙头、感应水龙头、冲洗器、干手器、给皂器、喷香器、淋浴器、智能补水地漏等十几个系列100多个应用产品及核心部件。凭借专注行业20多年的技术研发力量，科学严谨的质量管理体系，本着专业、专注、专心的经营理念，努力追求最大的客户满意度。

展鹰一直致力于成为世界一流的智能厨卫产品国际供应商，为行业提供优质、先进的智能厨卫核心技术及产品。我们从研究基础的核心部件入手，运用各类智能技术，系统设计，研发智能化、人性化、安全可靠的智能厨卫产品控制系统；以客户为导向，竭诚为全球客户提供卓越的OEM/ODM服务。

Established in 2001, Ningbo Geagle Intelligent Kitchen & Bath Tech Co., Ltd specializing in the research and development, as well as production the core components of intelligent kitchen and bath wares. Geagle integrates design, research development and manufacturing, after more than 20 years of effort, it has made great breakthroughs on many aspects such as bistable solenoid valves, SCM intelligent controls, infrared sensors, ultra-low power consumption, waterproofing, water conservation, and energy conservation.

Geagle has obtained more than 40 invention patents, utility model patents, and appearance patents in intelligent toilet flushing valves, constant pressure and constant flow valves, solenoid valves, infrared controls, waterproof connectors, hand dryers, intelligent faucets, manual and sensor combined kitchen faucets, water-replenishing environmentally-friendly floor drains, and other aspects. Currently, Geagle has more than 100 application products and core components in over ten series, including manuals and sensor combined kitchen faucets, sensor faucets, toilet flushing systems, automatic hand dryers, automatic soap dispensers, automatic fragrance sprayers, shower-heads, water-replenishing floor drains, etc. With 20 years of technical research and development strength in the industry and a rigorous quality management system, the company adheres to the business philosophy of professionalism, focus, and dedication, and strives to pursue maximum customer satisfaction.

Geagle has been committed to becoming a world-class international core components supplier of intelligent kitchen and bath, providing the industry with high-quality and advanced intelligent kitchen and bath core technology and products. Starting from the research of basic core components, the company utilizes intelligent technology to design and develop intelligent, user-friendly, safe and reliable kitchen and bath product control systems. With customers as the guide, Geagle provides excellent OEM/ODM services to global customers.



使命愿景

MISSION

展鹰使命 Company Mission

研制世界一流的智能厨卫核心技术，
为人类创造更加舒适的生活环境。

Research and develop the world-class intelligent kitchen and bath.
Create a more comfortable living environment for human beings.



展鹰价值观 Company Value

诚信 — 做人诚实守信，以诚待人，信守承诺，有契约精神。
务实 — 做事实事求是，言行一致，一切从实际出发，追求真理。
快乐 — 快乐工作，快乐生活。
共赢 — 互惠互利，共同发展，追求客户、员工、企业和社会的利益共享。

Company Value

Integrity — Honest and trustworthy; treat others with sincerity, keep promises, and have a spirit of contract.
Pragmatic — Seek truth from facts in work; act consistently and pursue truth from practicality.
Happiness — Enjoy work and life.
Win-win — Mutual benefit and common development; pursues shared interests of the customers enterprise employees and society.

资质证书 Honors Witness



专利证书 Patent Certificate



智能厨卫 四大核心技术 Four Core Technologies of Intelligent Kitchen and Bath

智能厨卫产品的可靠性、稳定性完全取决于电子感应控制技术、电磁阀控水技术、防水连接技术、电源系统等四大核心技术可靠、稳定、安全的运行。展鹰经过20多年精心研制，充分实现了四大核心技术在智能厨卫产品上的可靠应用，从而确保智能厨卫产品整体品质。

The reliability and stability of intelligent kitchen and bath equipment depends entirely on the reliable, stable, and safe operation of the four core technologies: electronic infrared detection technology, solenoid valve water control technology, waterproof connection technology, and power servo system. After 20 years of careful research and development, Geagle has fully achieved reliable application of these four core technologies in intelligent kitchen and bath equipment, thus ensuring the overall quality of the intelligent kitchen and bath system.



电子感应控制技术

展鹰电控技术采用微型集成控制元件，以数字处理方式，对红外探测到的信息进行精确的分析检测，并以编程软件进行控制，使产品的智能程度更高，执行工作程序更精确，控制设备更稳定，从而使厨卫产品更加人性化。

Sensor Control Technology

GEAGLE electronic control technology adopts micro-integrated control components and digital processing methods to perform precise analysis and detection of the information detected by infrared detection. Control is done through programming software, making the product more intelligent, the work program more accurate, and the control equipment more stable. This makes the kitchen and bath products more user-friendly.



电磁阀控水技术

电磁阀是智能厨卫产品最关键元件之一，安全可靠的实现水流的开关，完全依赖于电磁阀性能是否优越。展鹰用20多年的时间研究设计的双稳态电磁阀具有灵敏度高，水压范围大，功耗极低，使用寿命长的特点，为提供高质量智能厨卫产品奠定了基础。

Water Control Technology Of Solenoid Valve

The electromagnetic valve is one of the most critical components of intelligent kitchen and bath products. The water flow switch safely and reliably depends on whether the performance of the solenoid valve is superior. Geagle's bistable electromagnetic valve, which has been researched and designed for 10 years, has the characteristics of high sensitivity, large water pressure range, extremely low power consumption, and long service life. This has laid the foundation for providing high-quality intelligent kitchen and bath products.



防水连接技术

卫生间的潮湿环境，对于微电流的电子控制系统要求极高，展鹰为解决这个困难，研发设计了防反插防水连接件，有效提高了整个控制系统的稳定性和可靠性，大大提高了智能厨卫产品的使用寿命。

Water-proof Connection Technology

The humid environment in the bathroom requires a high demand for the micro-current electronic control system. To solve this problem, Geagle has developed and designed anti-reverse and waterproof connectors, which effectively improves the stability and reliability of the entire control system, greatly enhancing the service life of intelligent kitchen and bath products.



电源系统

稳定可靠的电源系统是整个智能厨卫系统的动力来源，为此展鹰研究开发了宽电压，低能耗，高性能的开关电源，交直流自动切换，并给予全防水工艺。同时设计了多款防水电池盒，为整个系统提供了稳定，可靠，持久的动力。

Mains Servo System

A stable and reliable power servo system is the power source for the entire intelligent kitchen and bath system. Therefore, Geagle has researched and developed a high-performance switch power supply with wide voltage range, low energy consumption, and automatic switching between AC and DC, using a fully waterproof process. At the same time, they have designed multiple waterproof DC battery boxes, providing stable, reliable, and long-lasting power for the entire system.



Intelligent Technology Make Kitchen and Bath Better !

智能技术，让厨卫感觉更好！

在倡导智能、绿色与品味生活的大趋势下，舒适的厨卫空间已经日益成为人们放松身心的场所，而这一切的实现离不开智能科技。利用电子感应技术、水控技术等高科技成果，以充分实现厨卫产品的综合功能与品质。

Under the general trend of advocating intelligent, green and tasteful life, comfortable kitchen and bathroom space has increasingly become a place for people to relax, and the realization of all these cannot be achieved without intelligent technology. The use of electronic induction technology, water control technology and other high-tech achievements, in order to fully realize the comprehensive function and quality of kitchen and bathroom products.



手自一体厨房水龙头
Manual and Sensor Combined Kitchen Faucet

产品主要技术参数
SPECIFICATIONS

适用水质	自来水
适用水温	1°C~70°C
环境温度	1°C~50°C
工作水压	0.05MPa~0.8MPa
出水流量	6.3L/min (动压0.3MPa)
额定电压	DC6V
整机功耗	3W
供电方式	AA碱性电池X4或电源适配器 (输入AC220V,输出DC6V)
感应方式	红外感应
感应距离	1.短距离感应模式: 感应开、感应关(30°30cm白挡板感应距离: 10±1cm, 手感应距离 6cm) 2.长距离感应模式: 感应开、离开关(30°30cm白挡板感应距离: 45±2cm, 手感应距离 24cm)
低电压提示	1.当电池电压接近4.8V±0.1V, 控制器感应出水期间指示灯与蓝色指示灯环每秒闪烁1次,并在关阀5s后停止闪烁,产品能正常工作 2.当电池电压低于4.6V±0.1V,控制器关阀进入欠压模式, 控制器指示灯每秒闪烁3次,产品不工作。
断电关阀功能	开阀状态下, 断电时, 控制器能稳定关阀。
超时自动断水	1.长距离感应模式:连续感应60s以后, 自动关阀断水, 如要再次开阀出水,必须把手或障碍物拿开后再次感应才会开阀出水。 2.短距离感应模式:手或障碍物感应到, 灯闪开阀, 同时蓝色指示灯环亮0.5s后熄灭,手或障碍物离开,不进行关阀动作90s后自动关阀断水,90s内,手或障碍物再次感应,控制器关阀停水, 同时蓝色指示灯环亮0.5s后熄灭。上述时间误差±10%。

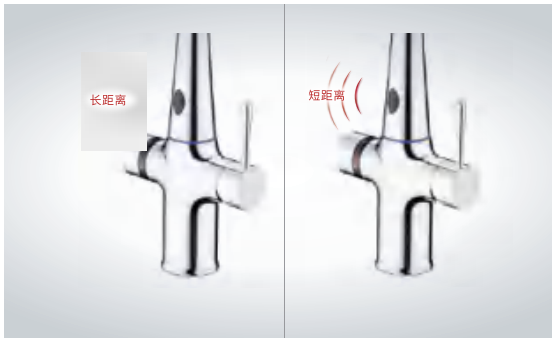
产品主要特点
Product Features



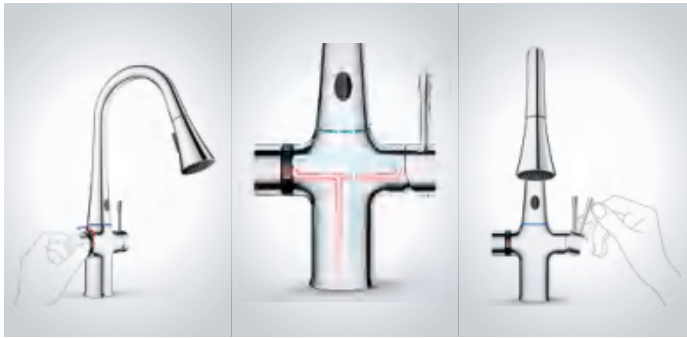
感应出水 无需手动 清洗方便



双感应模式, 轻松驾驭厨房各种用水场景



长距离感应伸手出水,离手关水; 感应出水,再感应关水



手动感应并联水路, 可独立调节水温

ZY-8980

手自一体水龙头



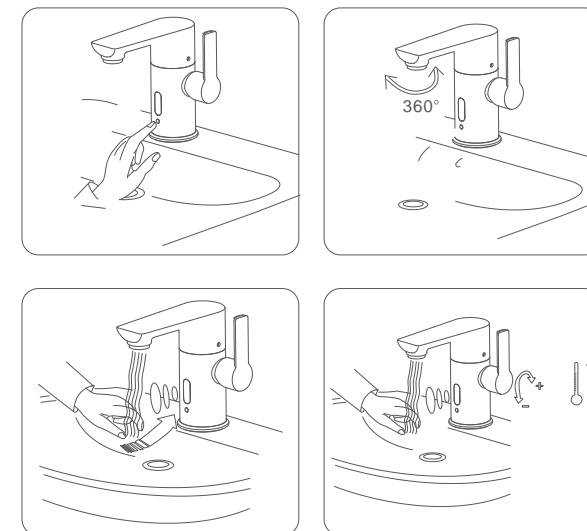
手自一体
开启水龙头智能化设计新潮流
Lead the new trend of intelligent faucet design

手自一体水龙头

Manual and Sensor Combined Faucet



- **感应出水：** 伸手接近感应区域，自动出水，离开则自动断水。
 - **手动调控：** 开启手柄，按需要调节水量与水温。
 - **出水方向可调：** 高端钮珀起泡器(Neoperl Aerator)，360° 改变出水方向。
 - **多功能键：** 感应功能开关、延迟功能开关、延迟时间调节、永久关阀开关，多种功能一键调控。
- **Automatic:** Water comes out automatically when your hands close to the sensor area.
 - **Manual control:** The water flow and temperature can be adjusted by the handle.
 - **Water outlet direction adjustable:** High-end Neoperl Aerator be used, to adjust water flow direction 360 degree.
 - **Multifunction key:** A button combines a variety of functions, include sensor function on-off, delay function on-off, delay time adjusting, permanent off control.



手动 **加** 自动
节水又卫生
享受生活新体验



ZY-8979W (陶瓷) ZY-8979(电镀) ZY-8979B (喷塑)
外观设计专利号：ZL201330341337.5
实用新型专利号：ZL201320431691.1
发明专利号：ZL201310304963.6

红星奖
Red Star Design Award
中国设计红星奖

和丰奖
HEFENG AWARD
和丰杯工业设计奖

手自一体水龙头

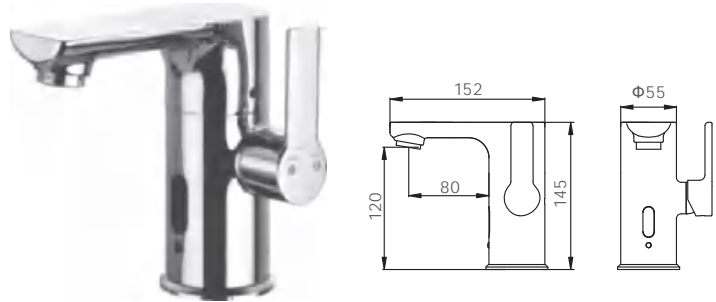
Manual and Sensor Combined Faucet

产品特点:

- 手动自动两用，自由双向切换
- 全铜一体设计结构紧凑合理
- 体积小
- 安装维护简单方便
- 外观豪华大方

FEATURES:

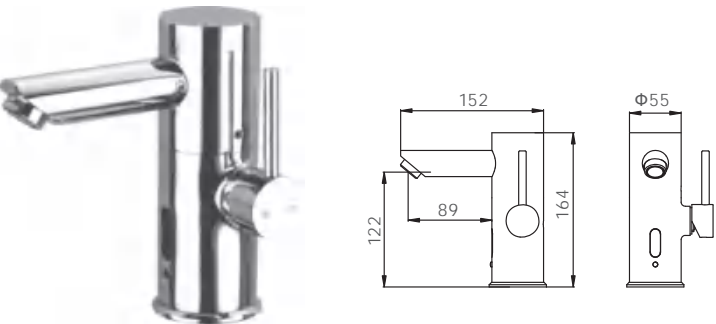
- Automatic & manual transmission, freely switching.
- Integrated design with brass body; Compact and reasonable design;
- Small in size
- Simple and convenient for installation and maintenance
- Appearance luxury and generous



ZY-8979D/A/AD

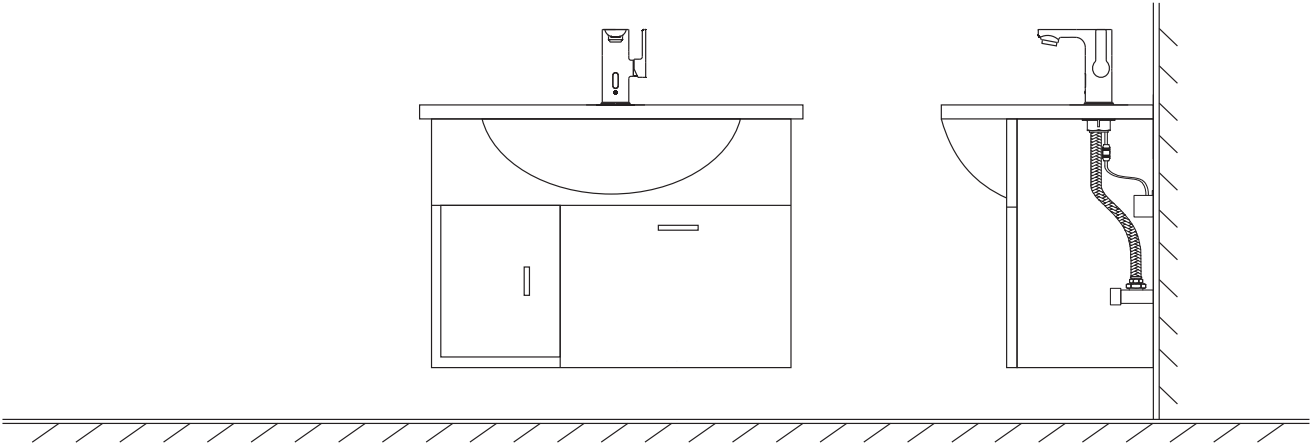
产品主要技术参数
SPECIFICATIONS

外置电源 Power Supply (outside)	DC: AA 碱性电池4节 / 4xAA batteries
	AC: 110V~240V, 50Hz~60Hz
	DC/AC : 交直流自动转换/AC&DC combined
适用水压 Applicable Water Pressure	0.05~0.7MPa
适用水温 Water Temperature	0.1~85
环境温度 Environment Temperature	0.1~60℃
给谁口径 Water Supplying Caliber	G1 / 2", G3 / 8"
出水流量 Maximum Flow of Manual Valve	最大出水流量8L/min(动态水压0.3Mpa) (Under 0.3Mpa dynamic water presure)
感应距离 Sensing distance of induction valve	10-26cm可调 Adjustable
感距调节方式 Adjusting way of distance	Self adjust
感应触发响应时间 Trigger time of sensor	300ms



ZY-8978D/A/AD

安装示意图
INSTALLATION DIAGRAM



一体式调温感应水龙头

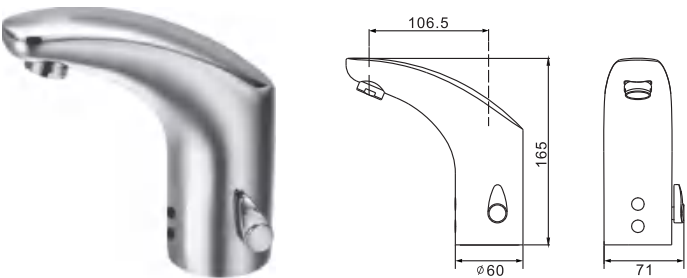
Integrated Cold & Hot Sensor Faucet

产品特点:

- 智能控制: 采用单片机控制, 设有1分钟超时停水功能, 避免因异物长时间在感应范围内造成水资源的浪费。
- 感距可调: 本产品具有自动调节感应距离的功能。
- 过滤装置: 软管接头处设有过滤装置, 随时可拆洗, 以免堵塞。
- 止回阀: 龙头体内安装有单向阀, 以防止冷热水互相串通。
- 创新设计: 一体化阀体, 冷热水调节设计, 采用内置2C R锂电池, 结构紧凑; 所有运行部件都隐藏在金属铸造龙头体内, 安装方便。

FEATURES:

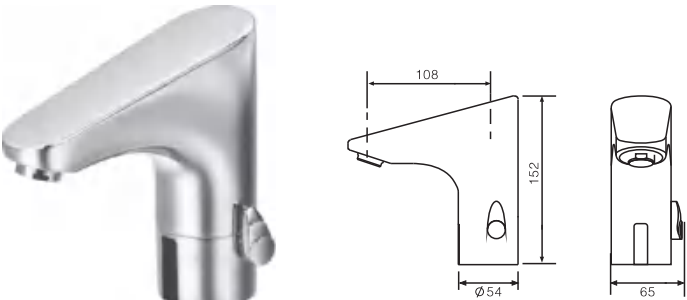
- Intelligent Control: Design with SCM, with a 1-minute timeout function to prevent water wasting caused by other objects remaining in the sensing range for too long.
- Adjustable Sensing: The product has the function of automatically adjusting the sensing distance.
- Filtering Device: There is a filtering device at the soft hose joint that can be removed and washed at any time to prevent blockages.
- Check Valve: The one-way valve is installed inside the faucet body to prevent hot and cold water from mixing.
- Innovative Design: The battery box is designed to be detachable for easy replacement, and the valve body is integrated with a reasonable and compact structure. The product also features a hot and cold water regulation design, waterproof power supply box, and waterproof power connection cable.



ZY-8700D/A/AD

产品主要技术参数
SPECIFICATIONS

电源 Power Supply	DC: AA碱性电池4节/4xAA batteries
	AC: 110V~240V 50Hz~60Hz
	DC/AC: 交直流自动转换/AC&DC combined
适用水压 Applicable Water Pressure	0.05~0.7MPa
适用水温 Water Temperature	0.1~60℃
环境温度 Environment Temperature	0.1~45℃
给水口径 Water Supplying Caliber	G1/2" G3/8"



ZY-8800D/A/AD



一体式调温感应水龙头

Integrated Cold & Hot Sensor Faucet



ZY-8902D

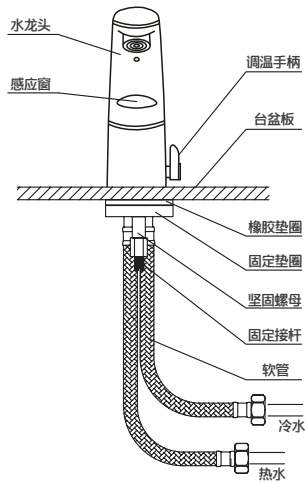
产品特点:

- **智能控制:** 采用单片机控制, 设有1分钟超时停水功能, 避免因异物长时间在感应范围内造成水资源的浪费。
- **多功能按键:** 具有常闭锁定、复位、感应距离调节、出水时间调节等多种功能。
- **感距可调:** 本产品具有自动调节感应距离的功能。
- **过滤装置:** 软管接头处设有过滤装置, 随时可拆洗, 以免堵塞。
- **止回阀:** 龙头体内安装有单向阀, 以防止冷热水互相串通。
- **创新设计:** 一体化阀体, 冷热水调节设计, 采用内置2CR5锂电池, 结构紧凑; 所有运行部件都隐藏在金属铸造龙头体内, 安装方便。

FEATURES:

- **Intelligent Control:** Design with SCM, with a 1-minute timeout function to prevent water wasting caused by other objects remaining in the sensing range.
- **Multi-function Button:** The product has various functions, including normally closed locking, reset, adjustable sensing distance, and adjustable water outflow time.
- **Adjustable Distance:** The product has the function of automatically adjusting the sensing distance.
- **Filtering Device:** There is a filtering device at the soft hose joint that can be removed and washed at any time to prevent blockages.
- **Check valve:** A one-way valve is installed inside the faucet body to prevent hot and cold water from mixing.
- **Innovative Design:** The product has an integrated valve body, hot and cold water regulation design, and uses an internally built-in 2CR lithium battery. All operating components are hidden inside the metal-cast faucet body, making installation convenient and easy.

安装示意图
INSTALLATION DIAGRAM



产品主要技术参数
SPECIFICATIONS

电源 Power Supply	2CR5 6V
适用水压 Applicable Water Pressure	0.05~0.7MPa
适用水温 Water Temperature	0.1~60℃
环境温度 Environment Temperature	0.1~45℃
给水口径 Water Supplying Caliber	G1/2" G3/8"

一体式调温感应水龙头

Integrated Cold & Hot Sensor Faucet

产品特点:

- **智能控制:** 采用单片机控制, 设有1分钟超时停水功能, 避免因异物长时间在感应范围内造成水资源的浪费。
- **感距可调:** 本产品具有自动调节感应距离的功能。
- **过滤装置:** 软管接头处设有过滤装置, 随时可拆洗, 以免堵塞。
- **止回阀:** 龙头体内安装有单向阀, 以防止冷热水互相串通。
- **创新设计:** 电池盒分离式设计, 方便更换; 一体化阀体, 冷热水调节设计, 结构合理、紧凑; 采用防水电源盒和防水电源连接线。

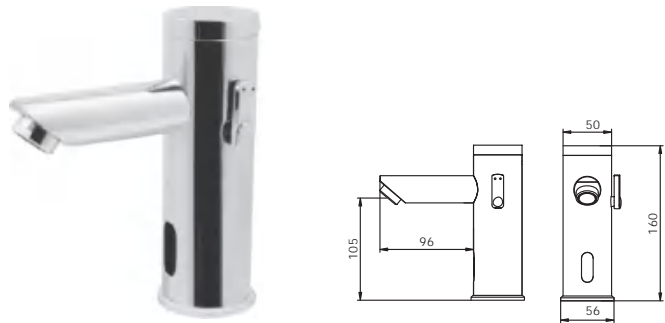
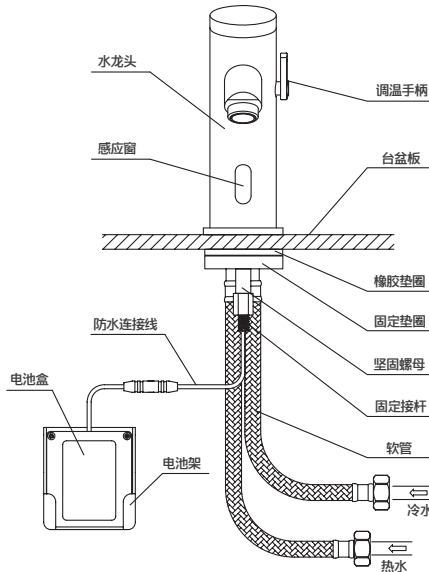
FEATURES:

- **Intelligent Control:** Design with SCM, with a 1-minute timeout function to prevent water wasting caused by other objects remaining in the sensing range.
- **Adjustable Distance:** The product has the function of automatically adjusting the sensing distance.
- **Filtering Device:** There is a filtering device at the soft hose joint that can be removed and washed at any time to prevent blockages.
- **Check valve:** A one-way valve is installed inside the faucet body to prevent hot and cold water from mixing.
- **Innovative Design:** The product has an integrated valve body, hot and cold water regulation design, and uses an internally built-in 2CR lithium battery. All operating components are hidden inside the metal-cast faucet body, making installation convenient and easy.

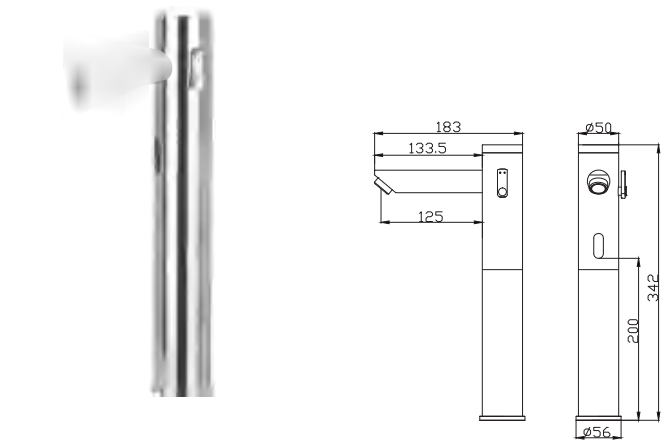
产品主要技术参数
SPECIFICATIONS

电源 Power Supply	DC:AA碱性电池4节/4xAA batteries
	AC:110V~240V 50Hz~60Hz
	DC/AC: 交直流自动转换/AC&DC combined
适用水压 Applicable Water Pressure	0.05~0.7MPa
适用水温 Water Temperature	0.1~60℃
环境温度 Environment Temperature	0.1~45℃
给水口径 Water Supplying Caliber	G1/2" G3/8"

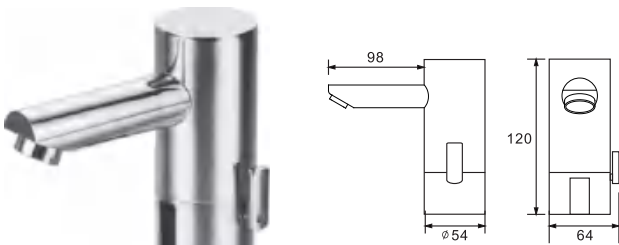
安装示意图
INSTALLATION DIAGRAM



ZY-8904HD/A/AD

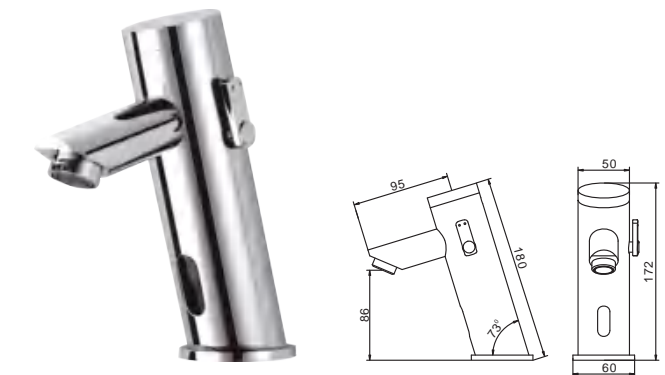
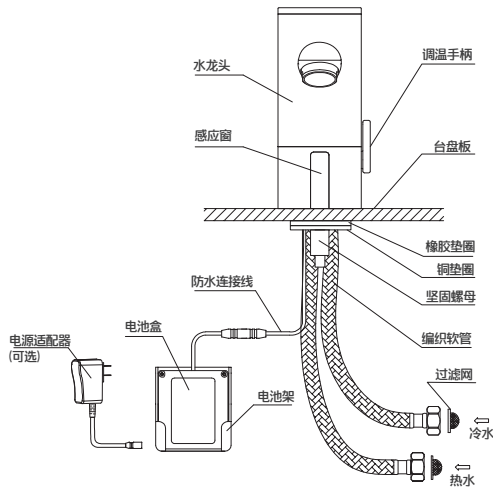


ZY-8904HLD/A/AD



ZY-8804D/A/AD

安装示意图
INSTALLATION DIAGRAM



ZY-8907D/A/AD

感应水龙头

Sensor Faucet

产品特点:

- **智能控制:** 采用单片机控制, 设有1分钟超时停水功能, 避免因异物长时间在感应范围内造成水资源的浪费。
- **感距可调:** 本产品具有自动调节感应距离的功能。
- **过滤装置:** 随时可拆洗, 以免堵塞。
- **防堵装置:** 电磁阀内置防堵装置, 更有效防止堵塞。

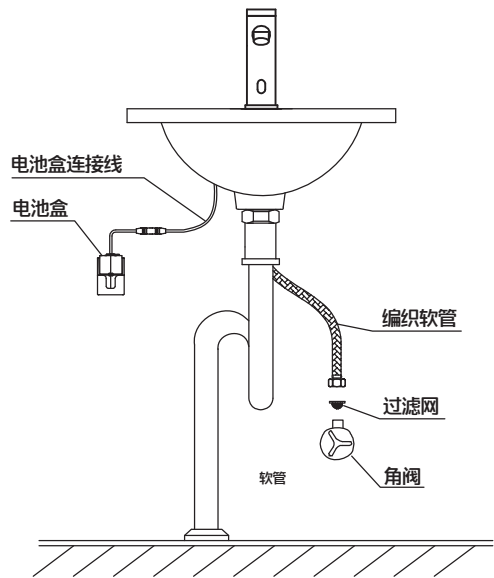
FEATURES:

- **Intelligent Control:** Design with SCM, with a 1-minute timeout function to prevent water wasting caused by other objects remaining in the sensing range.
- **Adjustable Sensing Distance:** The product has the function of automatically adjusting the sensing distance.
- **Filtering device:** Removable and washable at any time to prevent blockage.
- **Anti-blocking device:** The solenoid valve has a built-in anti-blocking device, which effectively prevents blockage.

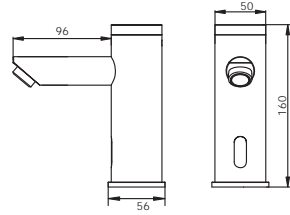
产品主要技术参数 SPECIFICATIONS

电源 Power Supply	DC:AA碱性电池4节/4xAA batteries
	AC:110V~240V 50Hz~60Hz
	DC/AC: 交直流自动转换/AC&DC combined
适用水压 Applicable Water Pressure	0.05~0.7MPa
适用水温 Water Temperature	0.1~60℃
环境温度 Environment Temperature	0.1~45℃
给水口径 Water Supplying Caliber	G1/2" G3/8"

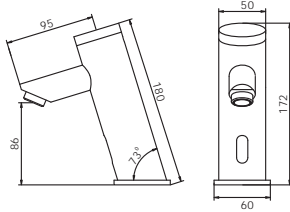
安装示意图 INSTALLATION DIAGRAM



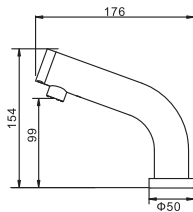
ZY-8905D/A/AD



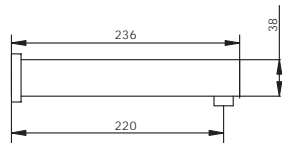
ZY-8906D/A/AD



ZY-8909D/A/AD



ZY-8910D/A/AD



感应水龙头

Sensor Faucet

产品特点:

- **智能控制:** 采用单片机控制, 设有1分钟超时停水功能, 避免因异物长时间在感应范围内造成水资源的浪费。
- **感距可调:** 本产品具有自动调节感应距离的功能。
- **过滤装置:** 随时可拆洗, 以免堵塞。
- **防堵装置:** 电磁阀内置防堵装置, 更有效防止堵塞。

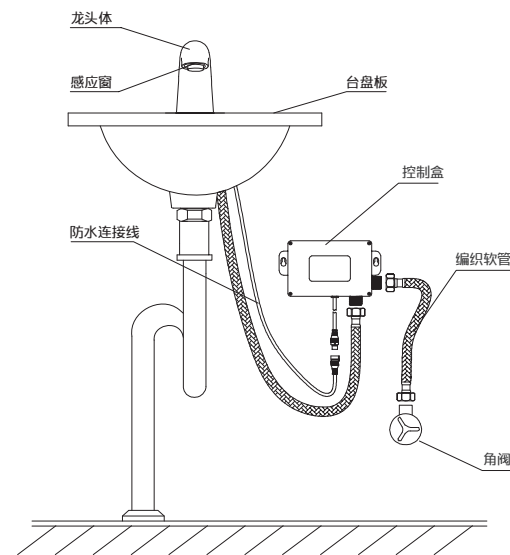
FEATURES:

- **Intelligent Control:** Design with SCM, with a 1-minute timeout function to prevent water wasting caused by other objects remaining in the sensing range.
- **Adjustable Sensing Distance:** The product has the function of automatically adjusting the sensing distance.
- **Filtering device:** Removable and washable at any time to prevent blockage.
- **Anti-blocking device:** The solenoid valve has a built-in anti-blocking device, which effectively prevents blockage.

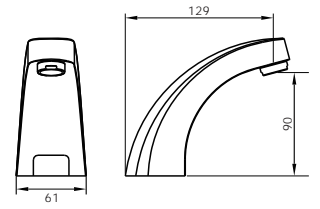
产品主要技术参数 SPECIFICATIONS

电源 Power Supply	DC:AA碱性电池4节/4xAA batteries
	AC:110V~240V 50Hz~60Hz
	DC/AC: 交直流自动转换/AC&DC combined
适用水压 Applicable Water Pressure	0.05~0.7MPa
适用水温 Water Temperature	0.1~60℃
环境温度 Environment Temperature	0.1~45℃
给水口径 Water Supplying Caliber	G1/2" G3/8"

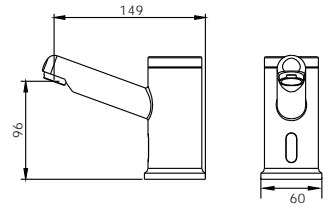
安装示意图 INSTALLATION DIAGRAM



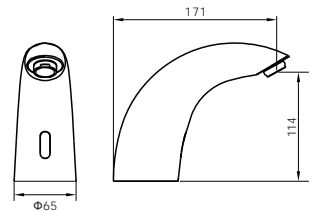
ZY-812D/A/AD



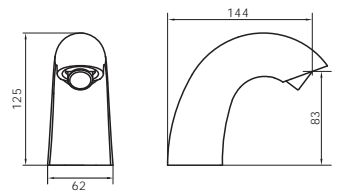
ZY-814D/A/AD



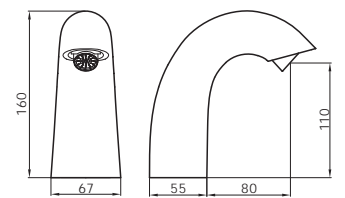
ZY-818D/A/AD



ZY-8110D/A/AD



ZY-8111D/A/AD (高high)



感应水龙头

Sensor Faucet

产品特点:

- **智能控制:** 采用单片机控制, 设有1分钟超时停水功能, 避免因异物长时间在感应范围内造成水资源的浪费。
- **感距可调:** 本产品具有自动调节感应距离的功能。
- **过滤装置:** 随时可拆洗, 以免堵塞。
- **防堵装置:** 电磁阀内置防堵装置, 更有效防止堵塞。

FEATURES:

- **Intelligent Control:** Design with SCM, with a 1-minute timeout function to prevent water wasting caused by other objects remaining in the sensing range.
- **Adjustable Sensing Distance:** The product has the function of automatically adjusting the sensing distance.
- **Filtering device:** Removable and washable at any time to prevent blockage.
- **Anti-blocking device:** The solenoid valve has a built-in anti-blocking device, which effectively prevents blockage.

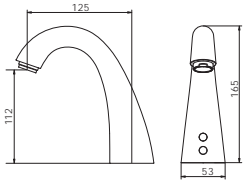
产品主要技术参数

SPECIFICATIONS

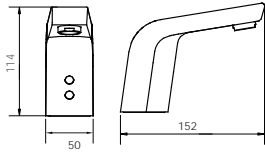
电源 Power Supply	DC:AA碱性电池4节/4xAA batteries
	AC:110V~240V 50Hz~60Hz
	DC/AC: 交直流自动转换/AC&DC combined
适用水压 Applicable Water Pressure	0.05~0.7MPa
适用水温 Water Temperature	0.1~60℃
环境温度 Environment Temperature	0.1~45℃
给水口径 Water Supplying Caliber	G1/2" G3/8"



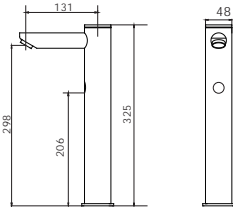
ZY-8121D/A/AD



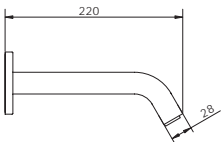
ZY-8155D/A/AD



ZY-8117D/A/AD(For above basin)

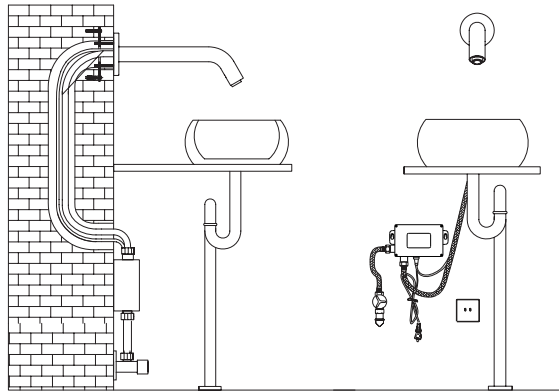


ZY-8131D/A/AD



安装示意图

INSTALLATION DIAGRAM



感应水龙头

Sensor Faucet

产品特点:

- **智能控制:** 采用单片机控制, 设有1分钟超时停水功能, 避免因异物长时间在感应范围内造成水资源的浪费。
- **感距可调:** 本产品具有自动调节感应距离的功能。
- **过滤装置:** 随时可拆洗, 以免堵塞。
- **防堵装置:** 电磁阀内置防堵装置, 更有效防止堵塞。

FEATURES:

- **Intelligent Control:** Design with SCM, with a 1-minute timeout function to prevent water wasting caused by other objects remaining in the sensing range.
- **Adjustable Sensing Distance:** The product has the function of automatically adjusting the sensing distance.
- **Filtering device:** Removable and washable at any time to prevent blockage.
- **Anti-blocking device:** The solenoid valve has a built-in anti-blocking device, which effectively prevents blockage.

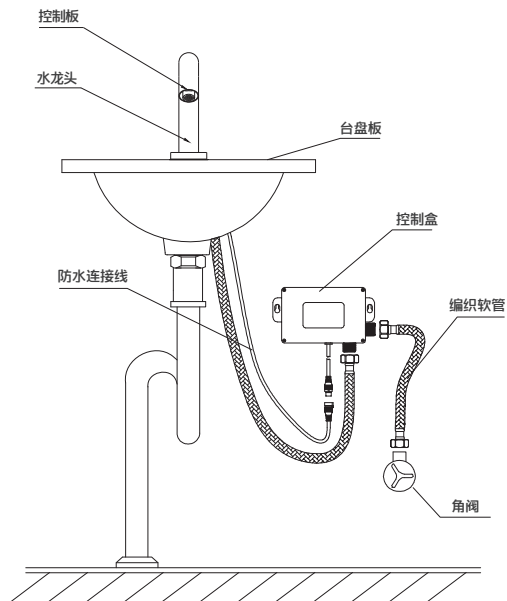
产品主要技术参数

SPECIFICATIONS

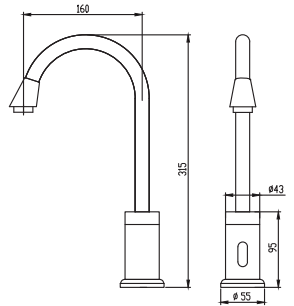
电源 Power Supply	DC:AA碱性电池4节/4xAA batteries
	AC:110V~240V 50Hz~60Hz
	DC/AC: 交直流自动转换/AC&DC combined
适用水压 Applicable Water Pressure	0.05~0.7MPa
适用水温 Water Temperature	0.1~60℃
环境温度 Environment Temperature	0.1~45℃
给水口径 Water Supplying Caliber	G1/2" G3/8"

安装示意图

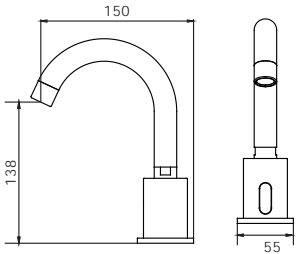
INSTALLATION DIAGRAM



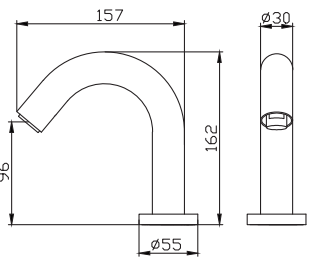
ZY-8113D/A/AD



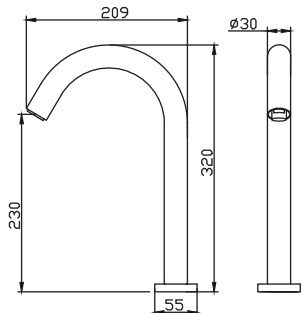
ZY-8114D/A/AD



ZY-8191D/A/AD



ZY-8191LD/A/AD



Mini感应水龙头

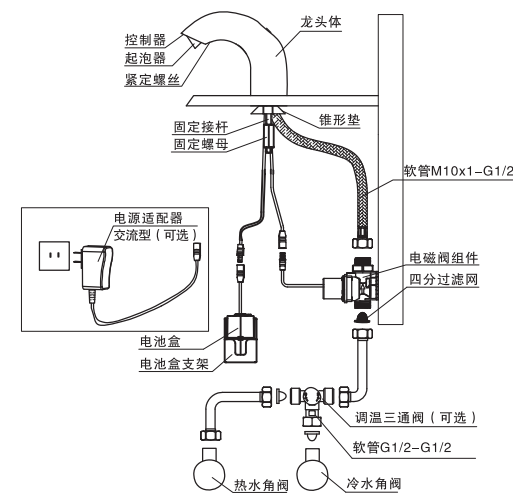
MINI Sensor Faucet

简约 Simple MINI

ZY-8612



安装示意
INSTALLATION DIAGRAM



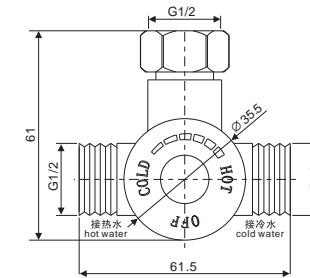
感应水龙头调温器、过滤网、单向阀

Faucet mixer、Filter、Check Valve

可调三通
Adjustable mixing valve



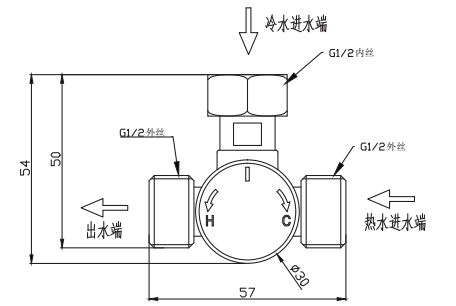
ZYFD-74



可调三通
Adjustable mixing valve



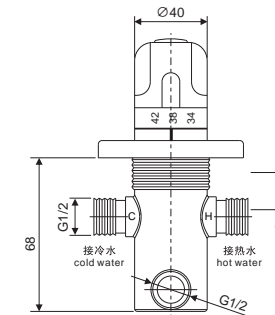
ZY-ST001



恒温器
Thermostat



ZY-HW-01



各型号过滤网
Various strainers



单向阀
Check valve



DN6



DN10



恒流组件

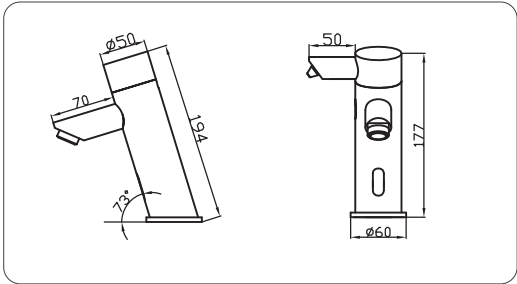


DN15



DN20

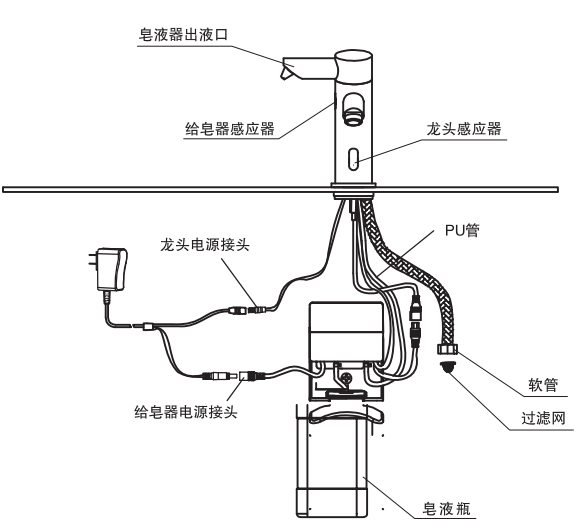
感应式皂液水龙头
Faucet Shaped Automatic Soap Dispenser



产品主要技术参数
SPECIFICATIONS

电源 Power Supply	AC 100-240V, 50-60Hz
皂液容量(给皂器) Liquid Volume (soap dispenser)	1500ml
每次给皂量(给皂器) Supply Volume Per Drop(soap dispenser)	2-10ml, factory set: 2ml(liquid type) 4-30ml, factory set: 4ml(foam type)
感应距离(给皂器) Detecting Distance(soap dispenser)	10-20cm adjustable, factory set distance: 10cm±1cm
感应距离(水龙头) Detecting Distance(Faucet)	8-20cm adjustable, factory set distance: 17cm±1cm
适用水压(水龙头) Applicable Water Pressure(Faucet)	0.05MPa (Dynamic pressure) -0.7MPa (Hydrostatic presure)
给水口径(水龙头) Water Supplying Caliber(Faucet)	G1/2
出水流量(水龙头) Water Yield(Faucet)	13.5±1L/min(Dynamic pressure 0.3MPa) Accept Customized
适用水温(水龙头) Water Temperature(Faucet)	1-60℃
环境温度 Ambient Temperature	0-1-45℃

安装示意图
INSTALLATION DIAGRAM



医用感应水龙头
Medical Sensor Faucet

产品特点:

- 智能控制：采用单片机控制，设有1分钟超时停水功能，避免因异物长时间在感应范围内造成水资源的浪费。
- 感距可调：本产品具有自动调节感应距离的功能。
- 过滤装置：随时可拆洗，以免堵塞。
- 防堵装置：电磁阀内置防堵装置，更有效防止堵塞。

FEATURES:

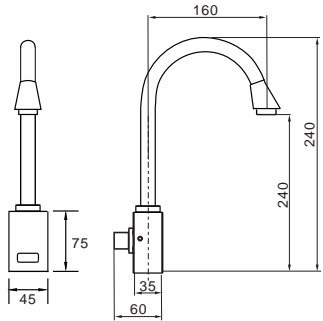
- Intelligent Control: Design with SCM, with a 1-minute timeout function to prevent water wasting caused by other objects remaining in the sensing range.
- Adjustable Sensing Distance: The product has the function of automatically adjusting the sensing distance.
- Filtering device: Removable and washable at any time to prevent blockage.
- Anti-blocking device: The solenoid valve has a built-in anti-blocking device, which effectively prevents blockage.

产品主要技术参数
SPECIFICATIONS

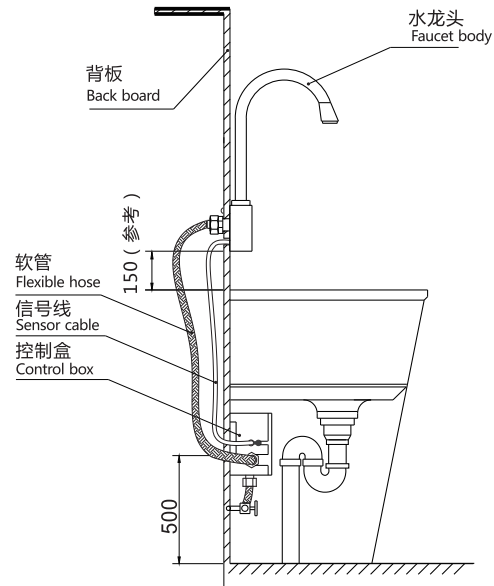
电源 Power Supply	DC:AA碱性电池4节/4xAA batteries
	AC:110V~240V 50Hz~60Hz
	DC/AC: 交直流自动转换/AC&DC combined
适用水压 Applicable Water Pressure	0.05~0.7MPa
适用水温 Water Temperature	0.1~60℃
环境温度 Environment Temperature	0.1~45℃
给水口径 Water Supplying Caliber	G1/2" G3/8"



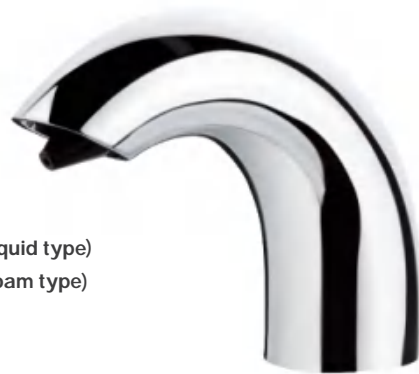
ZY-8178D/A/AD



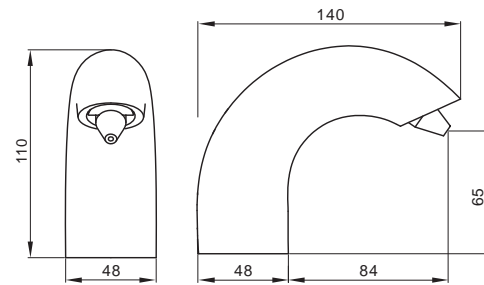
安装示意图
INSTALLATION DIAGRAM



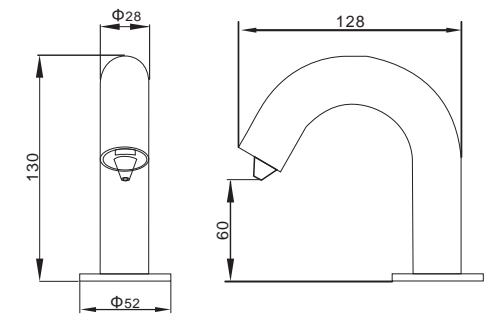
龙头型给皂器



ZY-6611(皂液型/Liquid type)
ZY-6612(泡沫型/Foam type)



ZY- 6692

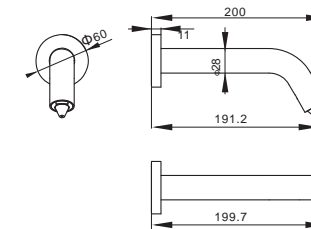


龙头型给皂器

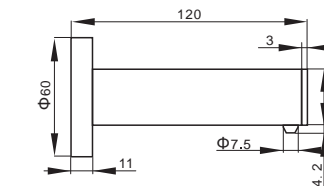
墙装龙头型给皂器
Wall-mounted Faucet-shape Soap Dispenser



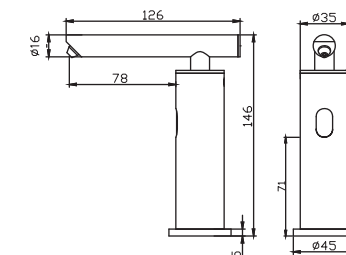
ZY-6631 (皂液型/Liquid type)
ZY-6632P (泡沫型/Foam type)



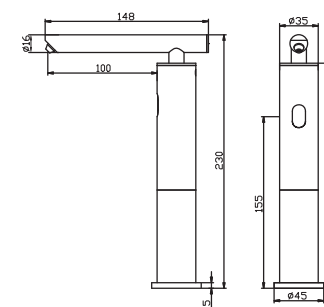
ZY-6618



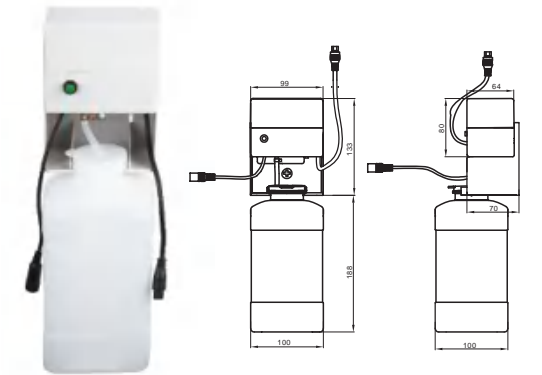
ZY-6617



ZY-6617HA



龙头型皂液器控制盒
Faucet Shape Soap Dispenser Control Box

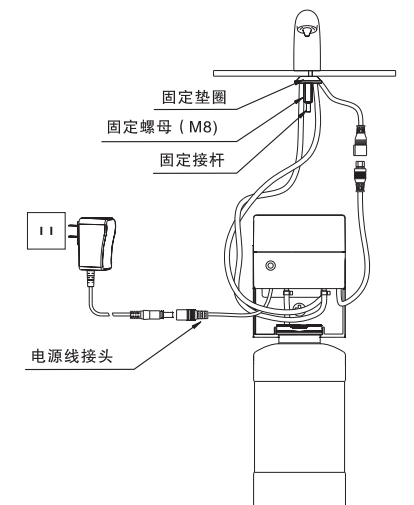


ZY-6611 (皂液型/Liquid type)
ZY-6612 (泡沫型/Foam type)

产品主要技术参数 SPECIFICATIONS

皂液容量 Liquid Volume	1500ml
每次给皂量 Supply Volume Per Drop	2-13.5ml, 出厂设置: 2ml(皂液型)
	4-25ml, 出厂设置: 4ml(泡沫型)
感应距离 Detecting Distance	5-16cm可调, 出厂距离: 10cm±1cm
环境温度 Ambient Temperature	1_55℃

安装示意图 INSTALLATION DIAGRAM

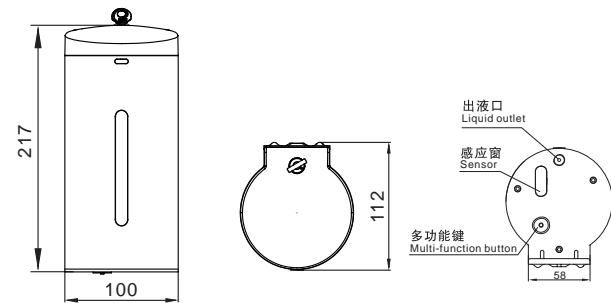


自动给皂器
Automatic Soap Dispenser



产品特点:

- **感应控制：** 单片机设计，超低能耗。
- **多功能按键：** 设有常闭常开模式，调节感应距离模式和调出液时间模式。
- **感应距离：** 上电30秒内可通过多功能键进行自动调节。
- **出 液 量：** 上电30秒内可通过多功能键进行自动调节。
- **外 观：** SUS304不锈钢外壳，坚固实用，豪华美观。
- **设 计：** 顶部锁紧装置的设置，有效防止非工作人员开启本机；电子部分全密封设计，防水防潮。可搭配不锈钢落地支架使用；
- **适用液体** 适用于免洗凝胶、皂液、酒精、泡沫等多种液体。



FEATURES:

- **Induction Control** Single-chip microcomputer design with ultra-low power consumption.
- **Multi-function Button** Equipped with normally closed and normally open modes, adjustable induction distance mode, and adjustable liquid dispensing time mode.
- **Induction Distance** Automatically adjustable within 30 seconds of power-on by the multi-function button.
- **Liquid Dispensing Amount** Automatically adjustable within 30 seconds of power-on by the multi-function button.
- **Appearance** SUS304 stainless steel shell, durable and practical, luxurious and beautiful.
- **Design** The top locking device effectively prevents non-workers from opening the machine; the electronic part is fully sealed, waterproof and moisture-proof. Can be used with stainless steel floor stand.

产品主要技术参数 SPECIFICATIONS

电源 Power Supply	DC9V(AAX6PCS)
皂液容量 Liquid Volume	650ml
每次给皂量 Supply Volume: PerDrop	0.8~6.5ml(adjustable)
出液时间 Liquid Time	0.5S-2S(adjustable)
感应距离 Detecting Distance	5-15cm
环境温度 Ambient Temperature	0.1~45℃

自动给皂器

Automatic Soap Dispenser

产品特点:

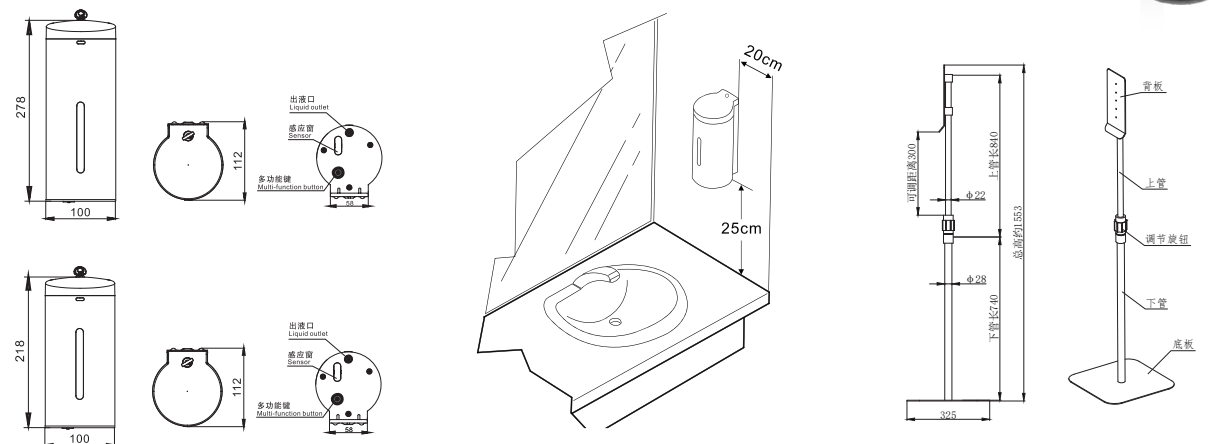
- SUS304不锈钢外壳，坚固实用，豪华美观。
 - 大容量设计，满足流动密集场所使用。
 - 感应距离和出液量可根据需要自行调节。
 - 适用液体65%以上酒精消毒液（乙醇）
 - 免洗消毒酒精啫喱及各种杀菌洗手液。
 - 额定电压 DC9V（AA*6pcs）
 - 皂液容量 1000ml/650ml
 - 次给皂量 0.8-6.5ml
 - 出液时间 0.5s-2s
 - 感应距离 5-15cm
 - 黄精温度 0.1~45℃
 - SUS304不锈钢消毒液机便携式落地支架
 - 表面处理不锈钢拉丝；便面喷漆
 - 高度115cm-145cm可调
 - 杆子直径 28
 - 单个支架净重 4.08公斤
 - SUS304 stainless steel disinfectant machine portable floor stand
 - Surface treatment with stainless steel wire drawing; Toilet surface spray painting
 - Height 115cm-145cm adjustable
 - Rod diameter ϕ twenty-eight
 - Single bracket net weight 4.08 kg

FEATURES:

- SUS304 stainless steel shell, sturdy and practical, luxurious and beautiful.
- Large capacity design, suitable for use in densely populated areas.
- The sensing distance and liquid output can be adjusted according to needs.
- Applicable liquid: Alcohol venom (ethanol) with a content of over 65%
- Clean and disinfect alcohol gel and various antibacterial hand sanitizers.
- **Rated Voltage:** DC9V (AA * 6pcs)
- **Liquid Volume:** 1000ml/650ml
- **Liquid Drop:** 0.8-6.5ml
- **Liquid Time:** 0.5s-2s
- **Sensing Distance** 5-15cm
- **Ambient Temperature** 0-145 °C



安装示意图 INSTALLATION DIAGRAM



高速自动干手器
High Speed Automatic Hand Dryer



ZY-207 (电镀 单孔 发光)
ZY-208 (电镀 多孔)



ZY-2071 (喷塑 单孔 发光)
ZY-2081 (喷塑 多孔)



高速自动干手器
High Speed Automatic Hand Dryer

产品特点:

- 外观: 铝合金镀铬外壳, 质地坚固耐用; 八道电镀工艺, 整体美观, 高档豪华。
- 智能控制: 单片机设计, 自动感应, 当本机连续工作超过1分钟以上时, 会自动关机。
- 快速干手: 在热风的作用下能使手在8-12秒干燥。
- 加热控制: 设有加热控制开关, 可任意选择冷风或热风。
- 负离子: 出风口设有负离子发生器, 使环境更加清新。
- 过滤杀菌: 进风口设有过滤棉, 有效过滤空气杂质, 确保空气清洁。
- 飘香: 设有香气片位, 开启时带出香味, 让环境空气芳香四溢。
- 过热保护: 当机器内部超过100C时, 本机将自动停止加热。
- 风口设计: 有单孔出风和多孔出风, 单孔出风带有彩色光圈。

FEATURES:

- **Appearance:** Chrome-plated aluminum alloy shell, sturdy and durable; eight-layer electroplating process, overall beautiful, high-end and luxurious.
- **Intelligent Control:** Single-chip microcomputer design, automatic induction, and electroplating process, overall beautiful, high-end and luxurious.
- **Fast Hand Drying:** The hands can be dried in 8-12 seconds under the action of hot air.
- **Heating Control:** Equipped with a heating control switch, cold or hot air can be selected at will.
- **Negative Ions:** The air outlet is equipped with a negative ion generator to make the environment fresher.
- **Filter And Sterilization:** The air inlet is equipped with a filter cotton to effectively filter air impurities and ensure air cleanliness.
- **Fragrance:** Equipped with fragrance block installation, bringing out the fragrance during the air blowing, making the environment air fragrant.
- **Overheat Protection:** When the internal temperature of the machine exceeds 100C, the machine will automatically stop heating.
- **Air Outlet Design:** Available in single-hole and multi-hole air outlets, the single-hole the machine will automatically stop heating.



蓝色光圈冷风
Blue LED cold air



红色光圈热风
Red LED warm air



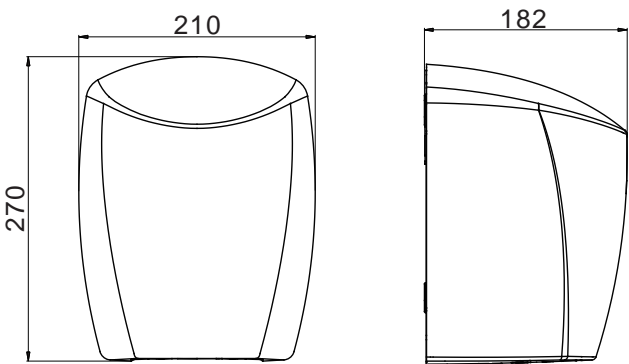
ZY-207A/2071A
单孔出风
Single hole



ZY-208A/2081A
多孔出风
Multi holes

产品主要技术参数
SPECIFICATIONS

电源 Power Supply	AC: 220V~240V 50Hz
感应距离 Sense Distance	12±3cm
电机转速 Motor Speed	25000r.p.m
电机功率 Motor Power	550W
加热功率 Heat Power	700W
总功率 Total Power	1250W
风速 Air Speed	30m/s
干手时间 Hand Drying Time	8~10s
防水等级 Waterproof Level	IPX1
热空气温度 Hot Air Temperature	30~50℃ (在常温20℃条件下) (at normal temp. 20℃)



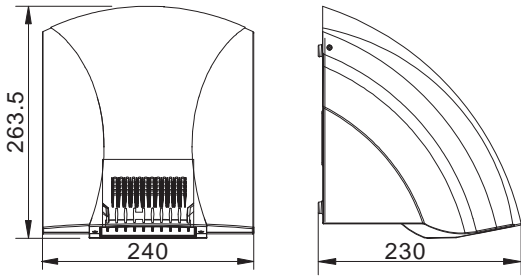
CE RoHS

自动干手器

Automatic Hand Dryer



ZY-203A



产品主要技术参数 SPECIFICATIONS

电源 Power Supply	AC: 220V ~ 240V 50Hz
感应距离 Sense Distance	8 ~ 14cm
电机转速 Motor Speed	2800r.p.m
总功率 Total Power	1800W
风速 Air Speed	>15m/sec
热空气温度 Hot Air Temperature	45 ~ 55℃

感应小便斗冲洗器 (暗装)

Sensor Urinal Flusher (Concealed)

产品特点:

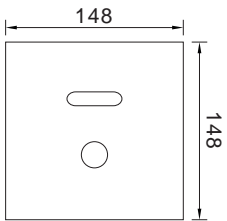
- **智能控制:** 单片机设计, 自动感应, 分二段冲洗, 节约用水。
- **省 电:** 四节5号碱性电池, 每天使用100次, 两年内无需要更换。(交直流电源可供选择)
- **外 观:** 细拉丝, 全不锈钢材料设计, 带手控。
- **结 构:** 不锈钢箱体, 全铜电磁阀: 电子部分密封设计, 防水防潮。
- **感距可调:** 根据需要可在30-70cm范围内自动调节。
- **水量可调:** 采用陶瓷阀芯, 根据水压情况, 可任意调节出水量。
- **过滤装置:** 随时可拆洗, 以免堵塞。
- **防堵装置:** 电磁阀内装有防堵塞针, 避免电磁阀失灵。
- **手动功能:** 带手动按钮, 防止感应器损坏导致无法使用的情况。
- **防臭功能:** 安装藏墙式, 上下直通, 适合10cm厚以上墙体安装。
每24小时自动冲洗一次, 以免存水弯内水干涸而产生异味。

FEATURES:

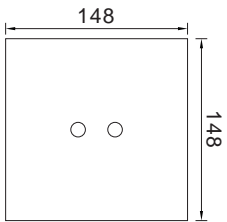
- **Intelligent Control:** Single-chip microcomputer design, automatic induction, two-stage flushing, water-saving.
- **Energy-saving:** 4 x AA alkaline batteries can be used 100 times a day without replacement for two years. (AC/DC power supply can be selected)
- **Appearance:** Fine wire drawing, all stainless-steel material design, with manual control.
- **Structure:** Stainless steel box body, all copper solenoid valve: electronic part sealed design, waterproof and moisture-proof.
- **Adjustable Sensing Distance:** Can be automatically adjusted within the range of 30-70cm according to needs.
- **Adjustable Water Flow:** Using ceramic valve core, the water flow can be adjusted freely according to water pressure.
- **Filtering Device:** Can be removed and washed at any time to avoid clogging.
- **Anti-clogging Device:** The solenoid valve is equipped with an anti-clogging needle to prevent the solenoid valve from malfunctioning.
- **Manual Function:** With a manual button to prevent the sensor from being damaged and unable to use.
- **Odor-proof Function:** Automatically flushes once every 24 hours to prevent odor caused by water drying in the water trap.



ZY-1066D/A/AD



ZY-1068D/A/AD

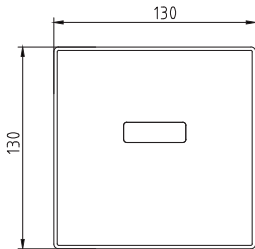
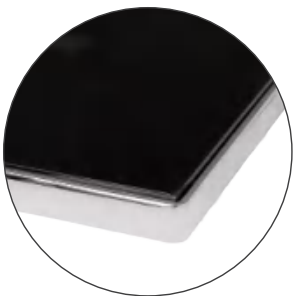
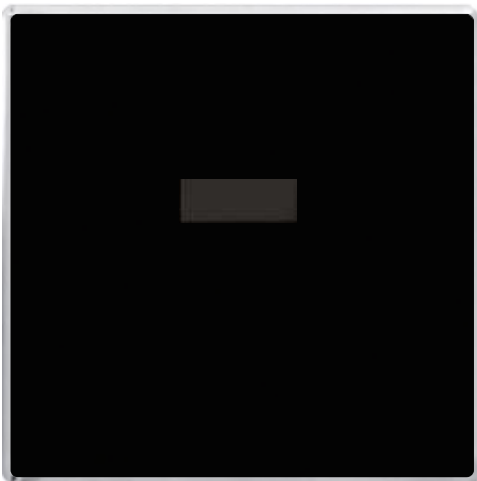


感应小便斗冲洗器 (暗装)

Sensor Urinal Flusher (Concealed)

ZY-1036A/D/AD

面板材质: 玻璃
Material:glass

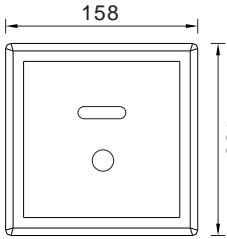


产品主要技术参数 SPECIFICATIONS

电源 Power Supply	DC:AA碱性电池4节/ 4xAA batteries
	AC:110V-240V 50Hz~60Hz
	DC/AC: 交直流自动转换/AC&DC combined
适用水压 Applicable Water Pressure	0.05~0.7MPa
适用水温 Water Temperature	0.1~60
环境温度 Environment Temperature	0.1~45
给水口径 Water Supplying Caliber	G1/2"
冲水水量 Water Flow	15-4升 (注: 水压为0.3-0.6MPa)冲水时间10s) 1.5-4L (10s based on water pressure of 0.3-0.6MPa)



ZY-1067D/A/AD



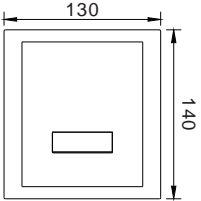
豪华型SUS304全不锈钢材料设计, 门轴式开门设计, 使用安装更加方便。

Luxury style, s.s 304 material; .
Open it like a door, more convenient in installation and using.

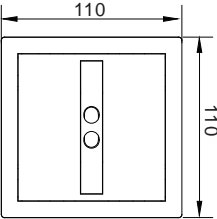
感应小便斗冲洗器 (暗装) Sensor Urinal Flusher (Concealed)



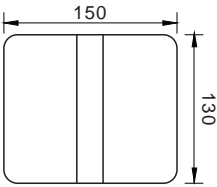
ZY-1000D/A/AD



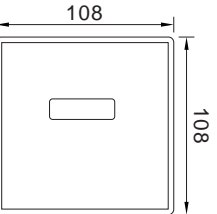
ZY-1012D/A/AD



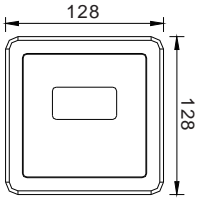
ZY-1011D/A/AD



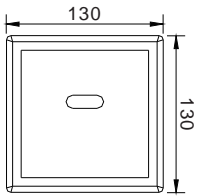
ZY-1032D/A/AD



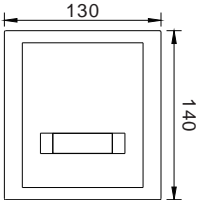
ZY-1044D/A/AD



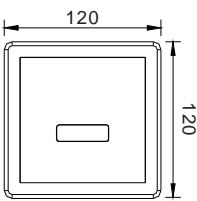
ZY-1001D/A/AD



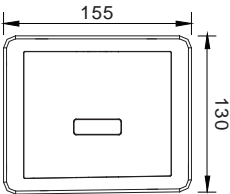
ZY-1022D/A/AD



ZY-1033D/A/AD



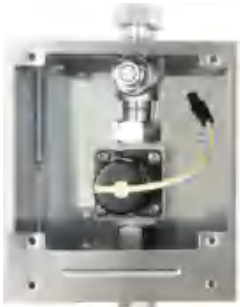
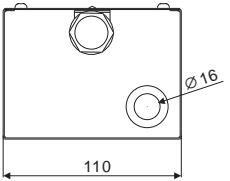
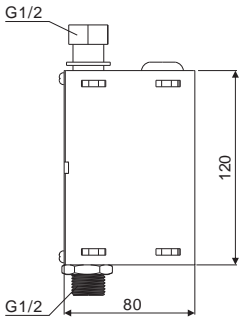
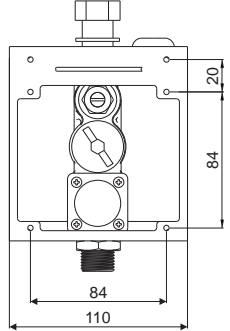
ZY-1097D/A/AD
ZY-1098D/A/AD
ZY-1099D/A/AD



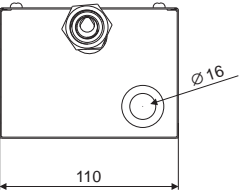
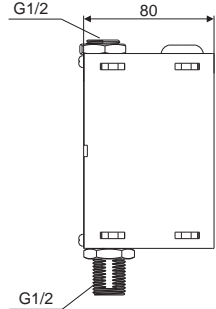
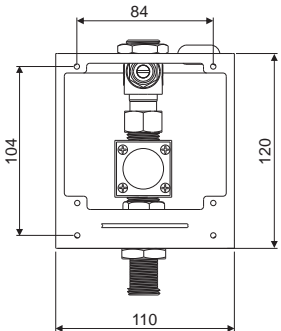
感应小便斗冲洗器箱体 Sensor Urinal Flusher Box



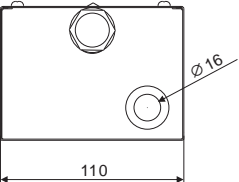
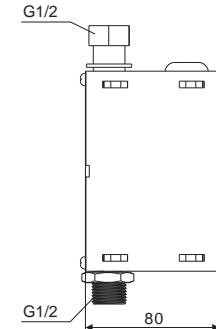
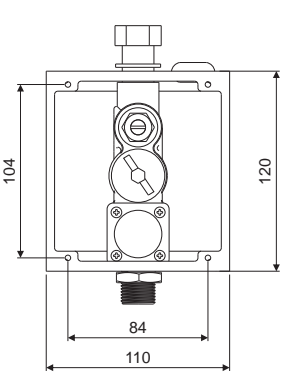
1002



1008



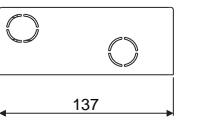
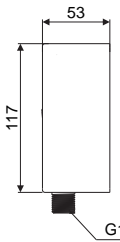
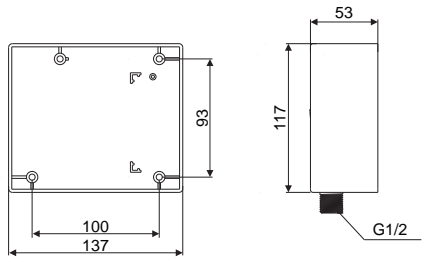
1066



1097



1098



感应小便斗冲洗器 (明装)

Sensor Urinal Flusher (Disclosed)

产品特点:

- **智能控制:** 单片机设计, 自动感应, 节约用水, 无需人工操作。
- **感距可调:** 可根据实际需要30-70CM的范围位置调节。
- **水量可调:** 带截止阀, 根据水压情况, 可任意调节出水量。
- **防臭功能:** 每24小时自动冲洗一次, 以避免水弯内水干涸而臭味上溢。

FEATURES:

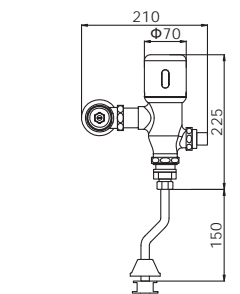
- **Intelligent Control:** Designed with a microcontroller, no manual operation needed, automatic induction.
- **Adjustable Water Flow:** Equipped with a shut-off valve, water flow can be adjusted freely according to the water pressure.
- **Adjustable Sensing Distance:** The range of the sensing distance can be adjusted to 30-70cm according to actual needs.
- **Odor Prevention Function:** Automatically flushed once every 24 hours to prevent odors caused by stagnant water in the trap.

产品主要技术参数 SPECIFICATIONS

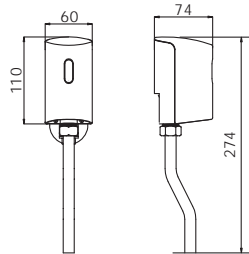
电源 Power Supply	DC:AA碱性电池4节/4xAA batteries
适用水压 Applicable Water Pressure	0.05~0.7MPa
适用水温 Water Temperature	0.1~60℃
环境温度 Environment Temperature	0.1~45℃
给水口径 Water Supplying Caliber	G1/2"
冲水量 Water Flow	1.5~4升 (注: 水压为0.3~0.6MPa, 冲水时间10s) 1.5~4升 (10s based on water pressure of 0.3~0.6MPa)



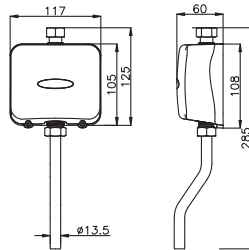
ZY-1500D



ZY-108D



ZY-1081D



一体化感应小便斗冲洗器

Integrated Sensor Urinal Flusher

产品特点

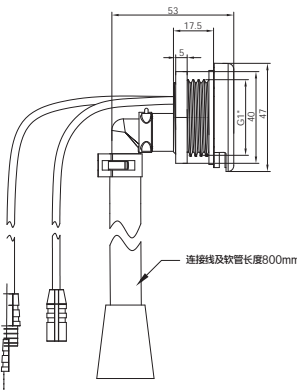
- 感应器与喷头一体化设计, 美观大气。
- 采用海水专业电磁阀。
- 额定电压6V (4节AA电池或AC110-240V/6V开关电源)
- 工作压力0.05-0.7MPa
- 工作流程根据需要可设定二段冲洗功能和单次冲洗功能。
- 24小时不感应自动冲水8秒;
- 感应距离最大感应距离65cm, 设置最小感应距离45cm。低压报警
- 功耗静态工作电流 25uA
- 工作寿命使用寿命 20万次;

FEATURES:

- The integrated design of the sensor and nozzle is beautiful and atmospheric.
- Adopting seawater professional solenoid valves.
- Rated voltage 6V (4 AA batteries or AC110-240V/6V switch power supply)
- Working water pressure 0.05-0.7MPa
- The workflow can be set with two-stage flushing function and single flushing function as needed.
- Automatic flushing for 8 seconds without induction for 24 hours;
- The maximum sensing distance is 65cm, and the minimum sensing distance is set to 45cm
- Low pressure alarm
- Power consumption, static working current 25uA
- Working life and service life 200000 times;



ZY-1600D (海水专用)



一体化陶瓷感应小便斗冲洗器配件

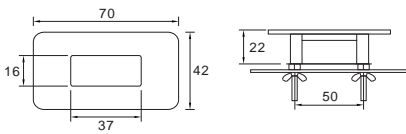
Sensor Ceramic Urinal Flusher Accessories

一体化陶瓷小便斗冲洗器将是未来卫生间的首选产品之一, 展鹰具备专业生产多种结构, 多种档次的一体化小便斗控制系统, 包括控制面板, 感应控制器, 电磁阀, 电源, 出水装置等。将为陶瓷洁具行业配套生产OEM/ODM冲洗器产品提供更多的选择空间。

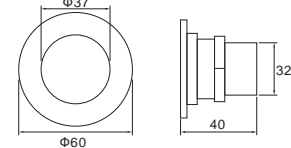
The integrated ceramic urinal flusher will be one of the preferred products for future bathrooms, and Geagle has the expertise to professionally produce a variety of structures and levels of integrated urinal control systems, including control panels, sensor controllers, solenoid valves, power supplies, water outlets, etc. This will providemore options for OEM/ODM flusher product manufacturing for the ceramic sanitary ware industry.



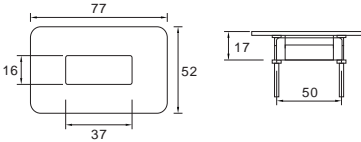
ZY-110D/A (全铜镀铬)
Brass With Chrome Finished



ZY-120D/A (全铜镀铬)
Brass With Chrome Finished



ZY-130D/A (SUS304不锈钢)



配套部件

Matching Accessories



ZY-F31



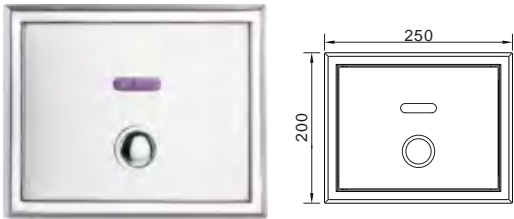
DC5B电池盒 (可任选)

产品主要技术参数 SPECIFICATIONS

电源 Power Supply	DC:AA碱性电池4节/4xAA batteries
	AC:110V~240V 50Hz~60Hz
适用水压 Applicable Water Pressure	0.05~0.7MPa
适用水温 Water Temperature	0.1~60℃
环境温度 Environment Temperature	0.1~45℃
给水口径 Water Supplying Caliber	G1/2"
冲水量 Water Flow	1.5~4升 (注: 水压为0.3~0.6MPa, 冲水时间10s) 1.5~4升 (10s based on water pressure of 0.3~0.6MPa)

多功能感应冲便器（暗装）

Multifunctional Sensor Toilet Flusher (Concealed)



ZY-3702D/A(内置式隔污装置) (with backflow preveter)

产品特点：

- **智能控制：** 单片机设计，自动感应，节约用水，无需人工操作。
- **结 构：** SUS304全不锈钢箱体；面板为全不锈钢工艺制作，开门式设计，使用极为方便可靠。
- **感距可调：** 根据需要可在60-90cm范围内调节。
- **冲 水：** 全铜阀体，大流量设计，确保低水压冲洗正常。
- **水量可调：** 根据水压情况，可任意调节出水量。
- **过滤装置：** 随时可拆洗，以免堵塞。
- **防堵装置：** 电磁阀内装有过滤网，避免电磁阀失灵。
- **手动功能：** 带手动按钮，可任意控制冲洗时间。
- **安 装：** 藏墙式，适合10cm厚以上墙体安装。
- **防臭功能：** 每24小时自动冲洗一次，以免存水弯内水干涸而臭味上溢。

FEATURES:

- **Intelligent Control :** Designed by SCM., Intelligent and save water
- **Structure :** S. s face Plate and housing, brass valve. The face can be opened easily like a door
- **Adjustable Distance:** Induce distance can be adjusted between 60-90cm
- **Adjustable Water Flow :** Water flow can be adjusted according to water pressure.
- **Water Flushing:** Flushing time is adjustable. Special design makes
- the machine can clean toilet even under low water pressure
- **Strainer Device:** Strainer can be removed and clean to prevent blocking
- **Manual operates:** Manual button is workable when automatic sensor does not work
- **Installation Control,** Wall thickness exceed 10cm
- **Auto Flush:** If nobody uses in 24hrs, it flushes one time automatically

箱体结构：

Housing structure

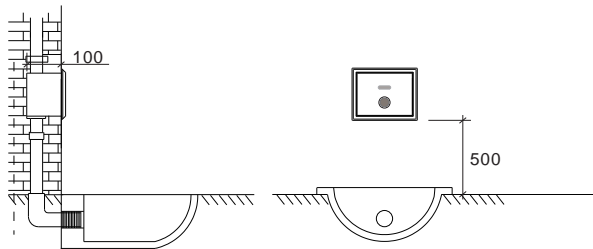


安装示意图

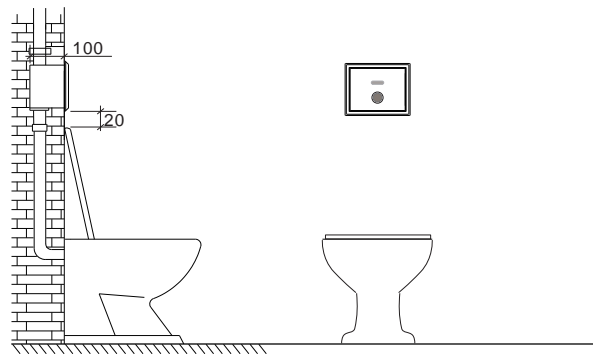
INSTALLATION DIAGRAM

蹲便器式安装For squatting W.c.pan

槽式安装



坐便器式安装For squatting W.c.pan



产品主要技术参数

SPECIFICATIONS

电源 Power Supply	DC:AA碱性电池4节/4xAA batteries
	AC:110V~240V 50Hz~60Hz
	DC/AC: 交直流自动转换/AC&DC combined
适用水压 Applicable Water Pressure	0.05~0.7MPa
适用水温 Water Temperature	0.1~60℃
环境温度 Environment Temperature	0.1~45℃
给水口径 Water Supplying Caliber	G1/2" G3/8"
冲水水量 Water Flow	4~6升 (注: 水压为0.3~0.6MPa, 冲水时间10s) 4~6升 (10s based on water pressure of 0.3~0.6MPa)

感应冲便器（暗装）

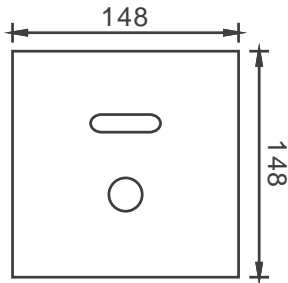
Sensor Toilet Flusher (Concealed)

产品特点：

- **智能控制：** 单片机设计，自动感应，节约用水，无需人工操作。
- **感距可调：** 根据需要可在40-80cm范围内调节。
- **水量可调：** 根据水压情况，可任意调节出水量。
- **安 装：** 藏墙式，适用10cm厚以上墙体安装。
- **防臭功能：** 每24小时自动冲洗一次，以免存水弯内水干涸而臭味上溢。

FEATURES:

- **INTELLIGENT:** Controlled by SCM., low consumption.
- **HYGIENIC:** Without touching avoid cross inflection of bacteria.
- **DETECTING RAGE:** It can be adjusted (factory set 60cm) 40-80cm according to your need.
- **TIME ADJUSTABLE:** Flush time can be adjusted as your need.
- **INSTALLATION:** It is suitable for those places having various type of users because of its elegant shape and extremely strong structure



ZY-3166D/A/AD



明装感应冲便器

Surface-mounted Inductive Toilet Flusher



ZY-3300D



ZY-3500D



ZY-3600D

感应冲便器 (暗装) Sensor Toilet Flusher (Concealed)

产品特点:

- 智能控制: 单片机设计, 自动感应, 节约用水, 无需人工操作。
- 感距可调: 根据需要可在60-90cm范围内调节。
- 水量可调: 根据水压情况, 可任意调节出水量。
- 安 装: 藏墙式, 适用10cm厚以上墙体安装。
- 防臭功能: 每24小时自动冲洗一次, 以免存水弯内水干涸而臭味上溢。



ZY-312D/A/AD



ZY-313D/A/AD

FEATURES:

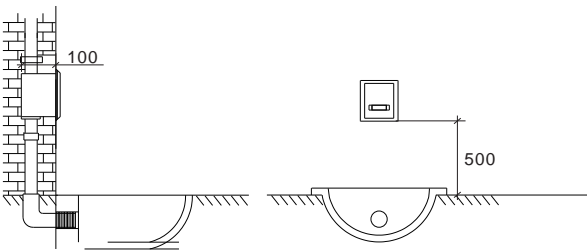
- **Intelligent Control:** Designed with a microcontroller, no manual operation needed, automatic induction.
- **Adjustable Water Flow:** Equipped with a shut-off valve, water flow can be adjusted freely according to the water pressure.
- **Adjustable Sensing Distance:** The range of the sensing distance can be adjusted to 30-70cm according to actual needs.
- **Installation Concealed:** wall thickness exceed 10cm
- **Odor Prevention Function:** Automatically flushed once every 24 hours to prevent odors caused by stagnant water in the trap.

产品主要技术参数 SPECIFICATIONS

电源 Power Supply	DC:AA碱性电池4节/4xAA batteries
	AC:110V~240V 50Hz~60Hz
	DC/AC: 交直流自动转换/AC&DC combined
适用水压 Applicable Water Pressure	0.3~0.8MPa
适用水温 Water Temperature	0.1~60°C
环境温度 Environment Temperature	0.1~45°C
给水口径 Water Supplying Caliber	G1/2" G3/8"
冲水水量 Water Flow	4~6升 (注: 水压为0.3~0.6MPa, 冲水时间10s) 4~6升 (10s based on water pressure of 0.3~0.6MPa)

安装示意图 INSTALLATION DIAGRAM

蹲便器式安装For squatting W.c.pan
槽式安装



产品特点:

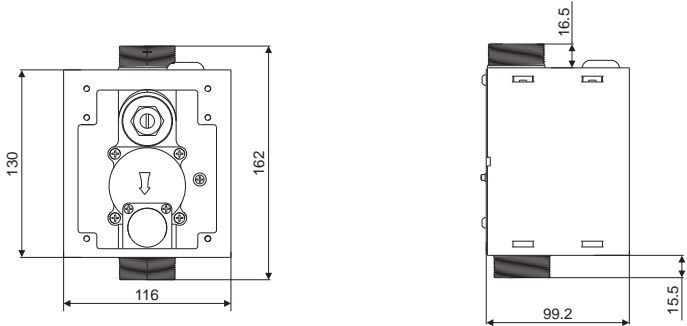
- 普及型设计, 简约, 物美价廉
- 全铜阀体, 带截止阀
- 适用电源: DC6V (4节AA电池) /AC220V ~ 50Hz
- 适用水压: 0.3-0.7Mpa



313

FEATURES:

- **Widesread design,** concise, high quality with competitive price.
- **Brass valve body,** with stop valve
- **Power supply:** DC6V (4 * AA batteries) /AC220V ~ 50Hz
- **Water pressure:** 0.3-0.7MPa



自动下水控制系统 Automatic Drainage Control System

自动下水控制系统是一种实现台盆自动去水的新一代智能卫浴产品, 旨在解决人们在用水后台盆废水的自动排放。产品通过无线控制技术, 并结合自动化执行机构, 能轻松实现台盆废水的自动排放。

产品特点:

- 无线控制,自动排水
- 免触开关, 感应开, 感应关
- 电源AC 220V/6V
- 安装方便

FEATURES:

- Wireless Control, Automatic Drainage
- Touchless Switch, Inductive Opening, Inductive Shutdown
- Power Supply AC 220V/6V
- Easy to Install



ZY-XS001



地漏防臭技术革命性升级!

彻底告别卫生间返味！还您一个健康清新的生活环境！

- 控制器定时给地漏补水，确保水封层不干涸。
- 防返溢设计，有效防止下水道中的害虫，通过地漏爬入卫生间。
- 手动冲水：10s/60s/300s可选。
- 自动冲水：由冲水间隔/时长组合设置。
- 冲水间隔：3天/7天/15天可选。
- 冲水时长：10s/60s/300s可选

- Water seal layer and floor drain core component with dual odor prevention setting
- The controller provides regular water replenishment to the floor drain to ensure that the water seal layer does not dry out.
- Anti-backflow design effectively prevents pests from crawling into the bathroom through the drain.
- Manual Flushing Options: 10s/60s/300s.
- Automatic Flushing: Configurable based on flushing interval and duration.
- Flushing Interval Options: 3 days/7 days/15 days.
- Flushing Duration Options: 10s/60s/300s.

国家发明专利号：CN1258534

National invention patent Number: CN1258534

地漏芯手柄

地漏芯手柄，方便地漏芯组建和整体拔除，宜于地漏的清洗与维护。

水封罩

采用高级透明材料制成，地漏内部情况一目了然。

水密封

地漏主体与水封罩组成一个U形的水密封，水密封有水，防止管道内气体进入室内。

橡胶膜

有效阻止地漏内异物进入供水管。

进水孔

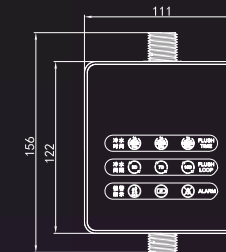
在地漏主体侧面开设有一个供水孔，供水孔与供水管连接，供水管又连接智能控水装置。

单向密封板

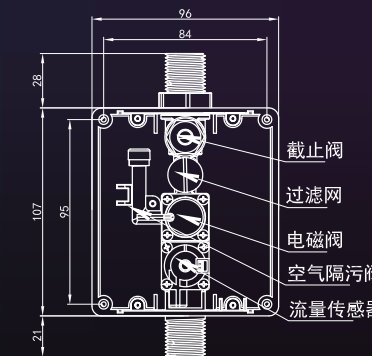
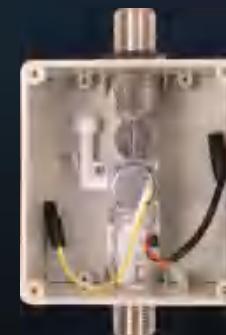
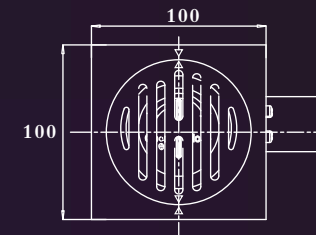
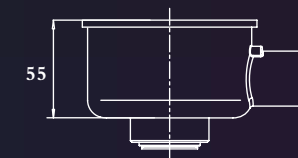
地漏主体下部端口内侧连接有单向密封组件，使得废水无法反溢。



ZY-900K 补水地漏控制器



ZY-9100D 补水式地漏
全铜镀铬（厚3mm）



进水管

电子控制系统

20cm

一切创造

源于生活

并回归于生活

...

没有最好，只有更好

GEAGLE 努力

在路上

...



Sincere Cooperation Win - win Future

至诚合作，共赢未来

展鹰始终本着专业、专注、专心的经营理念，精心研制世界一流的智能厨卫产品，以为人类创造更加舒适的生活环境为崇高使命，凭借多年来沉淀于智能厨卫行业的经验，专业的研发优势，科学的管理体系，为客户提供智能化厨卫产品的研发、设计与服务，努力追求客户最大满意度，共赢美好未来！

Geagle adhering to the business philosophy of professionalism, concentration, and dedication, meticulously develops world-class intelligent core components for kitchen and bath. Our mission is to create a more comfortable living environment for humanity. With years of experience and accumulation in the intelligent kitchen and bath industry, Geagle provides research, development, design, and service of intelligent products. With professional research and development advantages and a scientific management system, Geagle strives to achieve the highest customer satisfaction and work towards a mutually beneficial and bright future!