



HEATING EQUIPMENT

2025



CE

Solid Fuel Boilers

PASKAL **SLIM** PELLET



Advantages:



Economy, Compactness, Autonomy



Efficiency Up to 94%



Flame-Tube Heat Exchanger Made of Boiler Steel



5 Class
Eco Design



Power Modulation from 4 to 30 kW in Automatic Mode



**2 YEARS
WARRANTY**

Features:

Three-Stage Fire
Safety System

Most Compact Dimensions in Its Class

Complete Set Ready for
Immediate Use

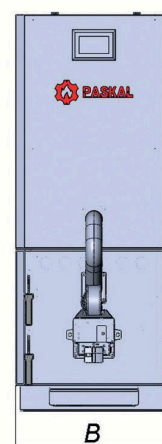
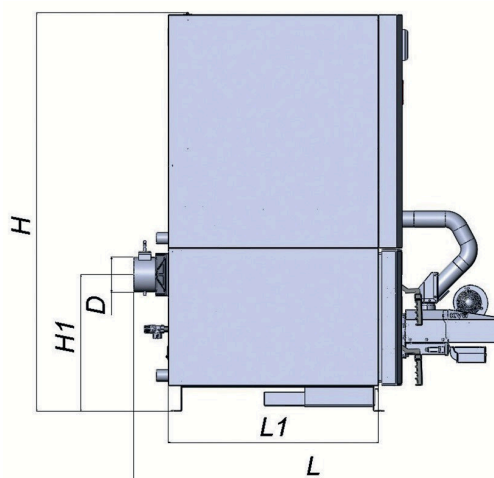
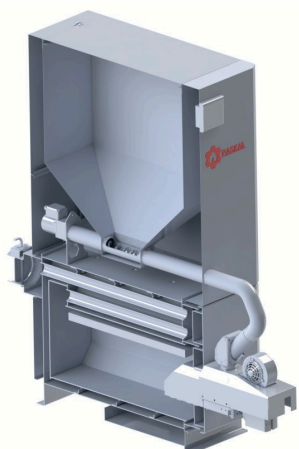
Optional **Wi-Fi** Connectivity

Autonomous Operation for
Up to 60 Hours

4 mm Thick Heat-Resistant Steel

PASKAL SLIM PELLET

SPECIFICATIONS		UNIT OF MEASUR	Standard for the boiler		
			SLIM PELLET 10	SLIM PELLET 15	SLIM PELLET 20
Nominal heat capacity (power) of the boiler		kW	10	15	20
Approximate heating area		m ²	100	150	200
Boiler heat exchange surface area		m ²	0,9	1,3	1,8
Efficiency (fuel: coal), not less than		%	85		
Dimensions of the firebox	depth	mm	520	720	970
	width	mm	230	370	370
	height	mm	250	250	250
	volume	dm ³	30	66,5	90
Boiler water capacity		l	35	55	75
Boiler weight without water		kg	125	185	225
Required flue draft		Па	20-30		
Recommended minimum water temperature		°C	58		
Maximum water temperature		°C	85		
Nominal (maximum operating) water pressure		MPa	0,15(0,2)		
Water test pressure, not exceeding		MPa	0,4		
Overall dimensions of the boiler	B	mm	435	575	575
	H	mm	1350	1450	1650
	H1	mm	360	500	500
	L	mm	1150	1350	1600
	L1	mm	570	770	1020
Dimensions of loading doors	height	mm	300	300	3600
	width	mm	230	370	370
Connection dimensions (external chimney diameter)		mm	127	127	127
Diameter of supply and return water pipes (DN)		mm	42(32)		
Recommended chimney parameters	Cross-sectional area	cm ²			
	Internal diameter	mm	130	130	130
	Minimum permissible height	m	5	6	8
The diameter of the connector for the safety valve		mm	21,3(15)	21,3(15)	21,3(15)
The required pressure for the safety valve to operate		MPa	0,25		





Solid Fuel Boilers

PASKAL DUO PELLET



Advantages:



Eco-Friendly: Low-temperature emissions are achieved through high efficiency resulting from effective combustion and complete heat recovery



Heat Exchanger with 4 Passes and 92% Efficiency



Modulated Boiler Operation



Versatility: Can use wood and coal when pellets are unavailable



**2 YEARS
WARRANTY**

Features:

Three-Stage Fire Protection System

Fire-Tube Heat Exchanger Made of Boiler Steel

Comprehensive Solution

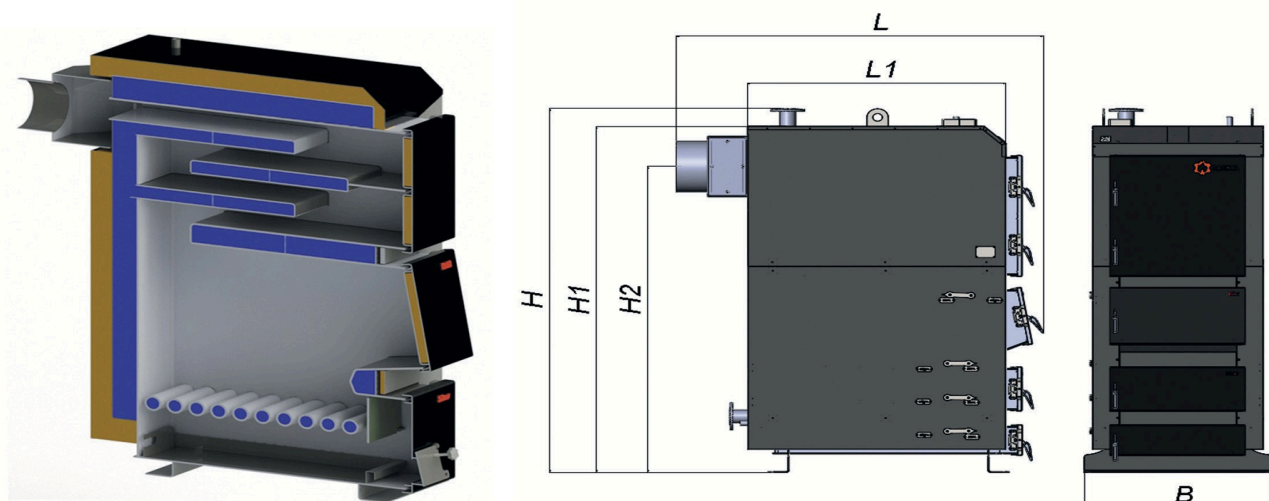
Modulation Range **from 30% to 110%**

Autonomous Operation for **Up to 120 Hours**

Water-Cooled Grates

PASKAL DUO PELLET

SPECIFICATIONS		UNIT OF MEASUR	Standard for the boiler						
			DUO15	DUO20	DUO25	DUO35	DUO50	DUO75	DUO99
Nominal heat capacity (power) of the boiler		kW	15	20	25	35	50	75	99
Approximate heating area		m ²	150	200	250	350	500	750	990
Boiler heat exchange surface area		m ²	1,72	2,3	2,73	3,8	4,7	7,3	9,86
Efficiency (fuel: coal), not less than		%	86						
Dimensions of the firebox	depth	mm	380	380	496	596	792	792	974
	width	mm	326	326	326	326	326	510	510
	height	mm	400	400	495	495	628	785	727
	volume	dm ³	50	50	80	96	161	317	382
Boiler water capacity		l	116	116	151	177	275	390	485
Boiler weight without water		kg	290	320	380	420	548	705	902
Required flue draft		Па	23-30						
Recommended minimum water temperature		°C	58						
Maximum water temperature		°C	85						
Nominal (maximum working) water pressure		MPa	0,2						
Test water pressure, not to exceed		MPa	0,4						
Overall dimensions of the boiler	B	mm	667	667	667	667	667	850	850
	H	mm	1255	1255	1360	1360	1705	2100	2100
	H1	mm	1210	1210	1310	1310	1660	1955	1995
	H2	mm	1030	1030	1130	1130	1444	1752	1752
	H3	mm	231	231	231	231	300	300	300
	L	mm	950	950	1140	1237	1460	1460	1730
	L1	mm	612	612	732	832			
	D	mm	159	159	159	159	220	248	300
Dimensions of loading doors	height	mm	220	220	308	308	300	300	300
	width	mm	326	326	326	326	326	510	540
Connection dimensions (external chimney diameter)		mm	159	159	159	159	220	248	300
Diameter of supply and return water pipes (DN)		mm	50	50	50	50	50	65	65
Recommended chimney parameters	Cross-sectional area	cm ²	201	201	201	219			
	Internal diameter	mm	160	160	160	220	220	250	300
	Minimum permissible height	m	5	6	6	6	8	8	10
The diameter of the connector for the safety valve		mm	15	15	15	15	20	20	20
The required pressure for the safety valve to operate		MPa	0,25						





CE

Solid Fuel Boilers

PASKAL GEO PELLET



Advantages:



Environmentally Friendly: Low-temperature emissions are achieved through high efficiency resulting from effective combustion and complete heat recovery



Heat Exchanger with Four Passes and 92% Efficiency



Modulated Boiler Operation



Option to Use Wood and Coal in the Absence of Pellets



**5 YEARS
WARRANTY**

Features:

Three-Stage Fire Safety System

Flame-Tube Heat Exchanger Made of Boiler Steel

Turnkey Solution

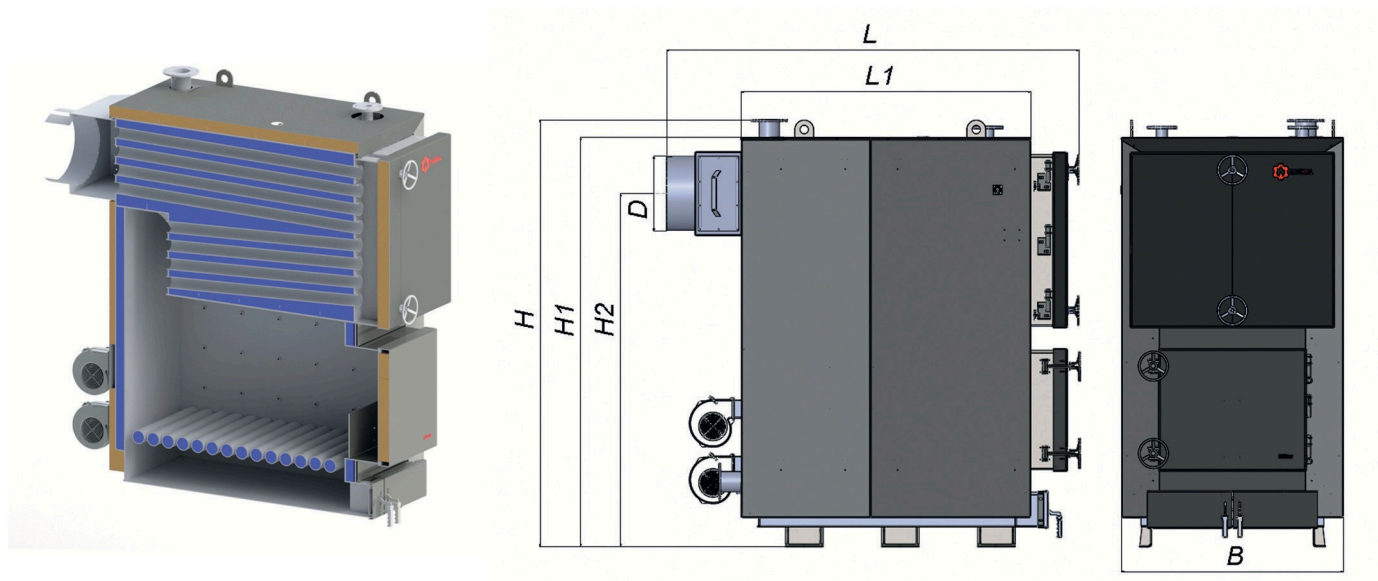
Modulation Range **from 30% to 110%**

Autonomous Operation for **Up to 120 Hours**

Water-Cooled Grate

PASKAL GEO PELLET

SPECIFICATIONS		UNIT OF MEASUR	Standard for the boiler						
			GEO PELLET 100	GEO PELLET 150	GEO PELLET 200	GEO PELLET 250	GEO PELLET 300	GEO PELLET 500	
Nominal heat capacity (power) of the boiler		kW	100	150	200	250	300	500	
Approximate heating area		m2	1000	1500	2000	2500	3000	5000	
Boiler heat exchange surface area		m2	10,2	14,3	18,6	23,5	28	48	
Efficiency (fuel: coal), not less than		%	86	86	86	86	86	86	
Dimensions of the firebox	depth	mm	990	890	1230	1353	1353	1700	
	width	mm	540	735	735	934	934	1140	
	height	mm	720	772	772	770	770	1100	
	volume	dm3	385	505	698	973	973	2130	
Boiler water capacity		l	480	550	750	1010	1160	1430	
Boiler weight without water		kg	1000	1110	1400	1900	2250	4600	
Recommended minimum water temperature		°C	58	58	58	58	58	58	
Maximum water temperature		°C	85	85	85	85	85	85	
Nominal (maximum working) water pressure		MPa	0,2	0,2	0,2	0,3	0,3	0,3	
Test water pressure, not to exceed		MPa	0,4						0,5
Overall dimensions of the boiler	B	mm	800	972	972	1176	1176	1930	
	H	mm	2060	2060	2060	2060	2270	2760	
	H1	mm	1970	1970	1970	1970	2175	2570	
	H2	mm	1720	1720	1720	1660	1876	2190	
	L	mm	1725	1635	1990	2260	2187	2820	
	L1	mm	1212	1070	1420	1536	1536	2110	
Dimensions of loading doors	height	mm	305	520	620	620	620	680	
	width	mm	540	615	615	615	754	780	
Diameter of direct and return water branch pipes in the network		mm	65(ΦЛ)	65(ΦЛ)	65(ΦЛ)	80(ΦЛ)	80(ΦЛ)	80(ΦЛ)	
Recommended chimney parameters	internal diameter	mm	300	300	300	350	400	450	
	height (minimum allowable)	m	7	8	9	14	15	16	
The diameter of the connector for the safety valve		mm	33(25)	33(25)	33(25)	50(ΦЛ)	2x50(ΦЛ)	2x50(ΦЛ)	
The required pressure for the safety valve to operate		MPa	0,3	0,3	0,3	0,35	0,35	0,4	
Electricity consumption, not exceeding			300	300	300	460	460	800	





CE

Solid Fuel Boilers

PASKAL ES



Advantages:



Environmentally friendly,
low-temperature emissions



4-doors design



4-pass heat exchanger, 86%
efficiency



Water-cooled
grates



The most economical boiler in its
segment



**5 YEARS
WARRANTY**

Features:

6 mm heat-resistant steel

Large combustion chamber

The option to install a draft
regulator

The option to install automation

High thermal efficiency

Ergonomic design

PASKAL ES

SPECIFICATIONS		UNIT OF MEASUR	ES 12-14	ES 16-18
Nominal heat output (boiler capacity)		kW	12-14	16-18
Approximate heating area		m ²	140	180
Heat exchange surface area in the boiler		m ²	1,42	1,68
Efficiency (fuel: hard coal), not less than		%	80	
Furnace dimensions	Depth	mm	400	400
	Width	mm	332	332
	Height	mm	375	470
	Volume	dm ³	50	62
Water capacity of the boiler		L	36	43
Boiler weight without water		kg	105	120
Required chimney draft		Pa	23-30	
Recommended minimum water temperature		°C	58	
Maximum water temperature		°C	85	
Nominal (maximum operating) water pressure		MPa	0,15	
Test water pressure, not exceeding		MPa	0,25	
Boiler overall dimensions	B	MM	550	550
	H		810	910
	H1		764	864
	H2		603	703
	L		850	850
Loading door dimensions	Height	mm	260	260
	Width	mm	340	340
Connection dimensions (outer diameter) of the chimney		mm	127	127
Diameter of supply and return pipe connections (Du)		mm	40	40
Recommended chimney parameters	Cross-sectional area	cm ²	114	114
	Internal diameter	mm	121	121
	Height (minimum required)	m	6	6
Diameter of the safety valve connection (Du)		mm	15	15
Required activation pressure for the safety valve		MPa	0,2	





CE

Solid Fuel Boilers

PASKAL SL / SLE



Advantages:



Deep firebox from 540 mm



Capacity from 15 to 35 kW



2-pass channel heat exchanger, 82% efficiency



Unique air supply system - 2-in-1



Deep firebox - burning duration up to 8 hours



5 YEARS WARRANTY

Features:

4/6 mm heat-resistant steel

Large combustion chamber

The option to install a draft regulator

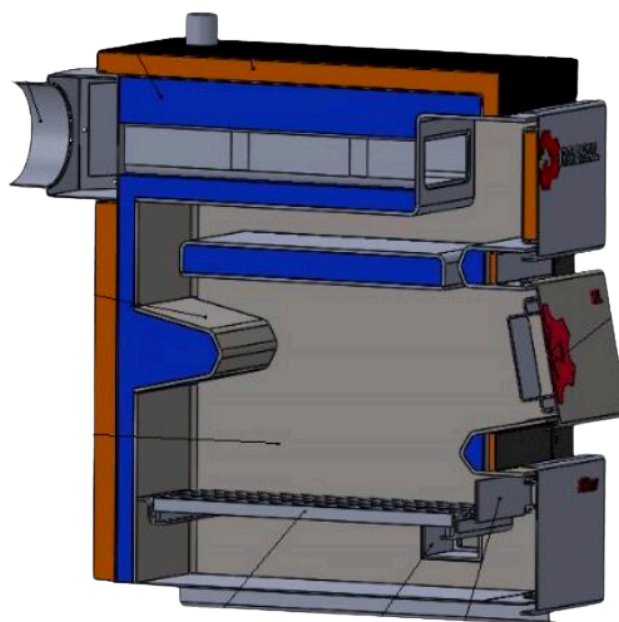
The option to install automation

High thermal efficiency

Deep firebox from 540 mm

PASKAL SL / SLE

SPECIFICATIONS		UNIT OF MEASUR	SL/SLE 15	SL/SLE 20	SL/SLE 25	SL/SLE 35	SL/SLE 50
Nominal heat capacity (power) of the boiler		kW	15	20	25	35	50
Approximate heating area		m ²	150	200	250	350	500
Boiler heat exchange surface area		m ²	1,6	2,15	2,35	3,6	4,7
Efficiency (fuel: coal), not less than		%	86				
Dimensions of the firebox	depth	mm	546	546	546	546	700
	width	mm	364	364	364	364	460
	height	mm	338	430	530	650	677
	volume	dm ³	67	85	105	129	218
Boiler water capacity		L	66	71	81	87	149
Boiler weight without water		kg	230/200	244/208	272/217	287/225	422/370
Recommended minimum water temperature		°C	58				
Maximum water temperature		°C	85				
Nominal (maximum working) water pressure		MPa	0.15				
Test water pressure, not to exceed		MPa	0.4				
Overall dimensions of the boiler	B	mm	560	560	560	560	657
	H		900	995	1095	1215	1416
	H1		855	950	1050	1170	1370
	L		722	817	917	1027	1210
	L1		1020	1020	1020	1020	1170
	D		830	830	830	830	991
Dimensions of loading doors	height	mm	195	195	195	195	335
	width	mm	364	364	364	364	460
Diameter of direct and return water branch pipes in the network		mm	48 (40)	48 (40)	48 (40)	60(50)	60(50)
Recommended chimney parameters	internal diameter	mm	160	160	160	180	221
	height (minimum allowable)	m	5	5	5	5	6
The diameter of the connector for the safety valve		mm	21(15)	21(15)	21(15)	21(15)	21(15)
The required pressure for the safety valve to operate		MPa	0.2				





CE

Solid Fuel Boilers

PASKAL EC / ECO



Advantages:



Space-saving due to the vertical exit of the chimney



Capacity from 15 to 35 kW



3-pass heat exchanger, 86% efficiency



Water-filled grates



Burning duration up to 8 hours



5 YEARS WARRANTY

Features:

4/6 mm heat-resistant steel

Vertical chimney exit

The option to install a draft regulator

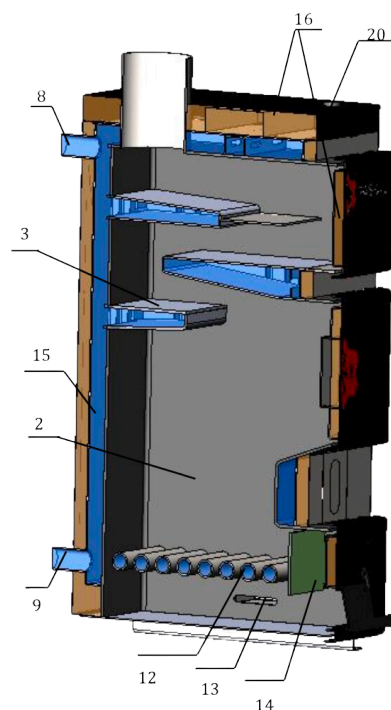
The option to install automation

High thermal efficiency

Large combustion chamber

PASKAL EC / ECO

SPECIFICATIONS		UNIT OF MEASUR	EC/ECO 15	EC/ECO 20	EC/ECO 25
Nominal heat capacity (power) of the boiler		kW	15	20	25
Approximate heating area		m ²	150	200	250
Boiler heat exchange surface area		m ²	1,7	2,2	2,6
Efficiency (fuel: coal), not less than		%	86		
Dimensions of the firebox	depth	mm	410	410	410
	width	mm	326	326	326
	height	mm	475	520	578
	volume	dm ³	63	70	77
Boiler water capacity		L	69	71	76
Boiler weight without water		kg	238(204)	242(208)	248(212)
Recommended minimum water temperature		°C	58		
Maximum water temperature		°C	85		
Nominal (maximum working) water pressure		MPa	0.15		
Test water pressure, not to exceed		MPa	0.4		
Overall dimensions of the boiler	B	mm	535	535	535
	H		1245	1295	1345
	H1		1150	1200	1250
	L		763	763	763
	L1		570	570	570
	D		159	159	159
Dimensions of loading doors	height	mm	295	295	295
	width	mm	326	326	326
Diameter of direct and return water branch pipes in the network		mm	48(40)	48(40)	48(40)
Recommended chimney parameters	internal diameter	mm	160	160	160
	height (minimum allowable)	m	5	6	6
The diameter of the connector for the safety valve		mm	21(15)	21(15)	21(15)
The required pressure for the safety valve to operate		MPa	0.2		











CE

Solid Fuel Boilers

PASKAL **STOUT UP**



Advantages:

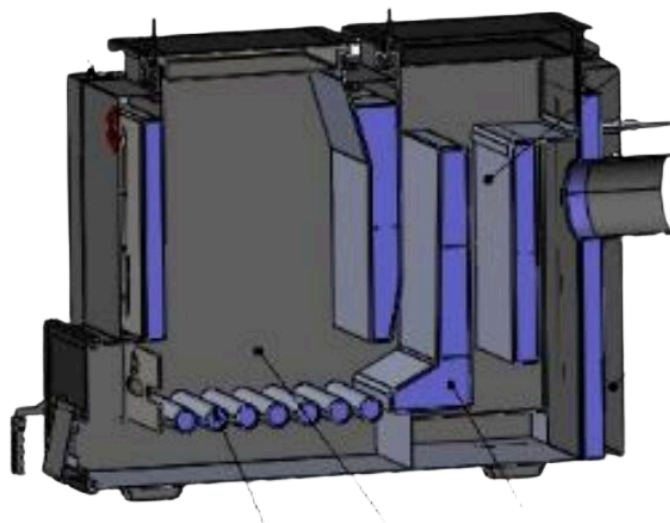
- | | |
|--|--|
|  Three-Pass Heat Exchanger |  Operates on all types of fuel |
|  Maximum Efficiency: 86% |  Ease of Fuel Loading |
|  Double-walled design |  5 YEARS WARRANTY |

Features:

Combined Heat Exchanger 4-6 mm	Large combustion chamber
Ability to Burn Any Type of Fuel	Top Loading, Bottom Combustion

PASKAL STOUT UP

SPECIFICATIONS		UNIT OF MEASUR	ST UP 15	ST UP 20	ST UP 25
Nominal heat output (boiler capacity)		kW	15	20	25
Approximate heating area		m ²	150	200	250
Heat exchange surface area in the boiler		m ²	1,3	1,8	2,2
Efficiency (fuel: hard coal), not less than		%	85	85	85
Furnace dimensions	Depth	mm	420	420	420
	Width	mm	374	420	420
	Height	mm	550	660	710
	Volume	dm ³	87	115	125
Water capacity of the boiler		L	94	119	126
Boiler weight without water		kg	233	280	301
Required chimney draft		Pa	20-30	20-30	20-30
Recommended minimum water temperature		°C	58	58	58
Maximum water temperature		°C	85	85	85
Nominal (maximum operating) water pressure		MPa	0,15	0,15	0,15
Test water pressure, not exceeding		MPa	0,3	0,3	0,3
Boiler overall dimensions	B	mm	595	645	645
	H		895	1000	1050
	L		1300	1300	1300
Loading door dimensions	Height	mm	370	370	370
	Width	mm	374	420	420
Connection dimensions (outer diameter) of the chimney		mm	159	159	159
Diameter of supply and return pipe connections (Du)		mm	40	40	40
Recommended chimney parameters	Cross-sectional area	cm ²	201	201	201
	Internal diameter	mm	160	160	160
	Height (minimum required)	m	5	6	7
Diameter of the safety valve connection (Du)		mm	15	15	15
Required activation pressure for the safety valve		MPa	0,2	0,2	0,2





CE

Solid Fuel Boilers

PASKAL DUO



Advantages:



Environmentally friendly,
low-temperature emissions



4-doors design



4-pass heat exchanger, 86%
efficiency



Water-filled
grates



The most economical boiler in its
segment



**5 YEARS
WARRANTY**

Features:

6 mm heat-resistant steel

Large combustion chamber

The option to install a draft
regulator

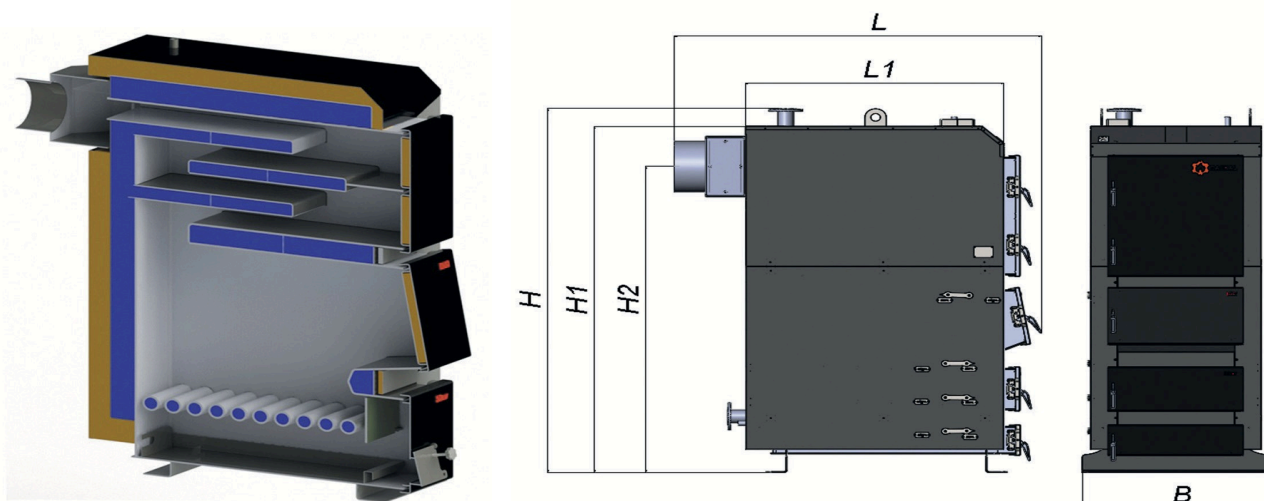
The option to install automation

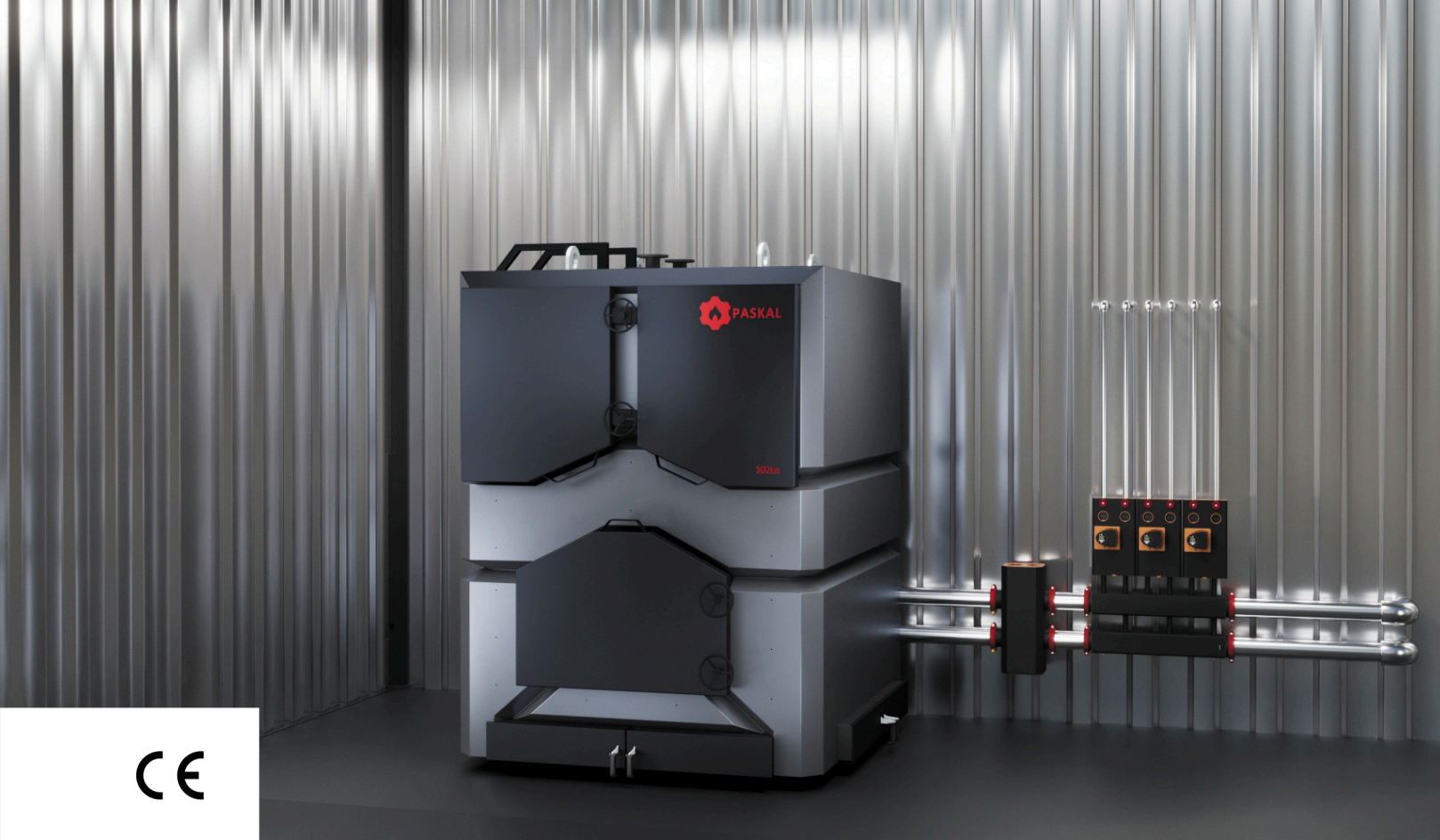
High thermal efficiency

Ergonomic design

PASKAL DUO

SPECIFICATIONS		UNIT OF MEASUR	DUO15	DUO20	DUO25	DUO35	DUO50	DUO75	DUO99
Boiler heat output (capacity)		kW	15	20	25	35	50	75	99
Boiler power modulation		kW	4,5-15	6-20	7,5-25	10,5-35	15-50	22,5-75	29,7-99
Approximate heating area		m ²	150	200	250	350	500	750	990
Heat exchange surface area in the boiler		m ²	1,72	2,3	2,73	3,8	4,7	7,3	9,86
Efficiency (fuel: hard coal), not less than		%	86						
Furnace dimensions	Depth	mm	380	380	496	596	792	792	974
	Width	mm	326	326	326	326	326	510	510
	Height	mm	400	400	495	495	628	785	727
	Volume	dm ³	50	50	80	96	161	317	382
Water capacity of the boiler		L	116	131	151	177	275	390	485
Boiler weight without water		kg	290	320	380	420	548	705	902
Required chimney draft		Pa	23-30						
Recommended minimum water temperature		°C	58						
Maximum water temperature		°C	85						
Nominal (maximum operating) water pressure		MPa	0,2						
Test water pressure, not exceeding		MPa	0,4						
Boiler overall dimensions	B	mm	667	667	667	667	667	850	850
	H	mm	1255	1255	1360	1360	1705	2100	2100
	H1	mm	1210	1210	1310	1310	1660	1955	1995
	H2	mm	1030	1030	1130	1130	1444	1752	1752
	H3	mm	231	231	231	231	300	300	300
	L	mm	950	950	1140	1237	1460	1460	1730
	D	mm	159	159	159	159	220	248	300
Loading door dimensions	Height	mm	220	220	308	308	300	300	300
	Width	mm	326	326	326	326	326	510	540
Connection dimensions (outer diameter) of the chimney		mm	159	159	159	159	220	248	300
Diameter of supply and return pipe connections (Du)		mm	50	50	50	50	50	65	65
Recommended chimney parameters	Cross-sectional area	cm ²	201	201	201	219			
	Internal diameter	mm	160	160	160	220	220	250	300
	Height (minimum required)	m	5	6	6	6	8	8	10
Diameter of the safety valve connection (Du)		mm	15	15	15	15	20	20	20
Required activation pressure for the safety valve		MPa	0,25						





CE

Solid Fuel Boilers

PASKAL GEO



Advantages:



Environmentally Friendly: Low-temperature emissions are achieved through high efficiency resulting from effective combustion and complete heat recovery



Heat Exchanger with Four Passes and 92% Efficiency



Modulated Boiler Operation



Boiler's deep firebox that holds a large amount of fuel



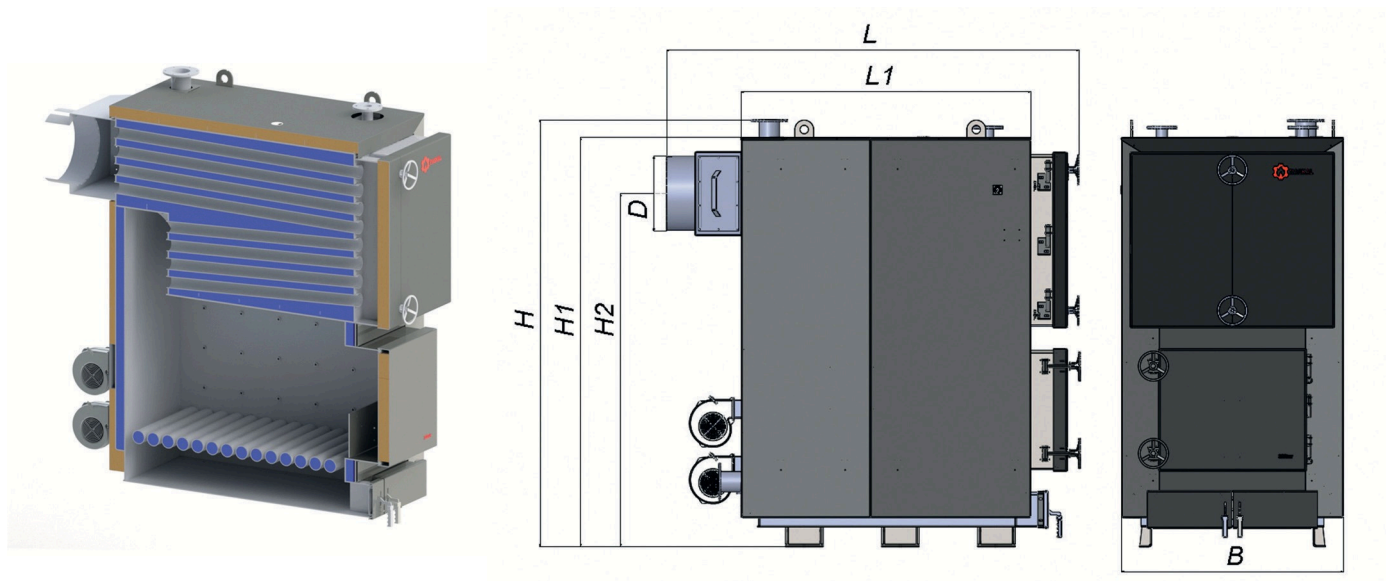
5 YEARS WARRANTY

Features:

Secondary gas afterburning system	Flame-Tube Heat Exchanger Made of Boiler Steel
Modulated boiler operation	Modulation Range from 30% to 110%
The option to install a Paskal MAX pellet burner	Equipped with automation and a fan

PASKAL GEO

SPECIFICATIONS		UNIT OF MEASUR	GEO 100	GEO 150	GEO 200	GEO 250	GEO 300	GEO 500	GEO 700	GEO 1000
Boiler heat output (capacity)		kW	100	150	200	250	300	500	700	1000
Approximate heating area		m ²	1 000	1 500	2 000	2 500	3 000	5 000	7 000	10 000
Heat exchange surface area in the boiler		m ²	10,2	14,3	18,6	23,5	28	48	64	86
Efficiency (fuel: hard coal), not less than		%	86							
Furnace dimensions	Depth	mm	990	890	1230	1353	1353	1700	1940	2000
	Width	mm	540	735	735	934	934	1140	1550	990
	Height	mm	720	772	772	770	770	1100	930	1100
	Volume	dm ³	385	505	698	973	973	2130	2800	2170
Water capacity of the boiler		L	480	550	750	1010	1160	1430	2500	3500
Boiler weight without water		kg	1000	1110	1400	1900	2250	4600	4400	6500
Recommended water temperature		°C	58							
Maximum water temperature		°C	85							
Nominal (maximum operating) water pressure		MPa	0,2							
Test water pressure, not exceeding		MPa	0,4							
Boiler overall dimensions	B	MM	800	972	972	1176	1176	1930	2020	1920
	H	MM	2060	2060	2060	2060	2270	2760	2570	3200
	H1	MM	1970	1970	1970	1970	2175	2570		
	H2	MM	1720	1720	1720	1660	1876	2190		
	L	MM	1725	1635	1990	2260	2187	2820	3200	3700
	L1	MM	1212	1070	1420	1536	1536	2110		
Loading door dimensions	Height	MM	305	520	620	620	620	680	760	656
	Width	MM	540	615	615	615	754	780	1190	714
Diameter of supply and return pipe connections (Du)		MM	65(ФЛ)	65(ФЛ)	65(ФЛ)	80(ФЛ)	80(ФЛ)	80(ФЛ)	100(ФЛ)	125(ФЛ)
Recommended chimney parameters	Cross-sectional area	MM	300	300	300	350	400	450		
	Internal diameter	M	7	8	9	14	15	16	16	
	Height (minimum required)	MM	33(25)	33(25)	33(25)	50(ФЛ)	2x50(ФЛ)	2x50(ФЛ)	2x50(ФЛ)	2x65(ФЛ)
Diameter of the safety valve connection (Du)		MПа	0,3	0,3	0,3	0,35	0,35	0,4	3,5	
Required activation pressure for the safety valve		Бт	300	300	300	460	460	800		





CE

Buffers and boilers

PASKAL EVA



Advantages:



Provides comfort, safety, and economy when using a solid fuel boiler



Ability to obtain hot water



Save up to 20% in firewood per season



Removable wear-resistant thermal insulation



Pipe outlets on three sides - convenience of connection



5 YEARS WARRANTY



Option to connect to other heat sources: electric heaters, electric boilers, heat pumps, and solar panels

Suitable for:

Solid Fuel Boilers

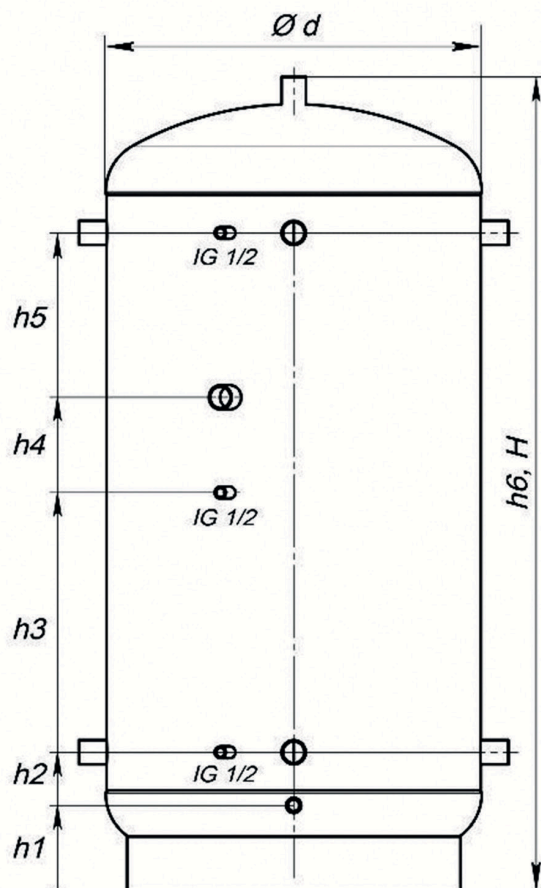
Gas Boilers

Heat Pumps

Solar Collectors

PASKAL EVA

NAME	WEIGHT, KG	HEIGHT, MM	DIAMETER	WITHOUT INSULATION, MM	HEAT EXCHANGE AREA
Paskal EVA 300 Buffer Tank	90	1 070	595	60	
Paskal EVA 500 Buffer Tank	108	1 600	645	60	
Paskal EVA 750 Buffer Tank	142	1 710	790	60	
Paskal EVA 1000 Buffer Tank	160	1 960	790	60	
Paskal EVA 1500 Buffer Tank	208	1 995	1 010	60	
Paskal EVA 2000 Buffer Tank	260	2 070	1 200	60	
Paskal EVA 3000 Buffer Tank	287	2 200	1 400	100	
Paskal EVA 300-10 Buffer Tank with upper heat exchanger	145	1 122	600	100	1,4 m ²
Paskal EVA 500-10 Buffer Tank with upper heat exchanger	170	1 635	650	100	1,4 m ²
Paskal EVA 750-10 Buffer Tank with upper heat exchangers	205	1 744	790	100	1,4 m ²
Paskal EVA 1000-10 Buffer Tank with upper heat exchangers	225	1 991	790	100	1,4 m ²
Paskal EVA 1500-10 Buffer Tank with upper heat exchangers	270	2 055	1 000	100	1,4 m ²
Paskal EVA 2000-10 Buffer Tank with upper heat exchangers	320	2 139	1 200	100	1,8 m ²
Paskal EVA 300-11 Buffer Tank with two heat exchangers	185	1 122	600	100	1,8 m ² + 1,8 m ²
Paskal EVA 500-11 Buffer Tank with two heat exchangers	230	1 635	650	100	1,8 m ² + 1,8 m ²
Paskal EVA 750-11 Buffer Tank with two heat exchangers	294	1 744	790	100	1,8 m ² + 1,8 m ²
Paskal EVA 1000-11 Buffer Tank with two heat exchangers	326	1 991	790	100	1,8 m ² + 1,8 m ²
Paskal EVA 1500-11 Buffer Tank with two heat exchangers	386	2 055	1 000	100	1,8 m ² + 1,8 m ²
Paskal EVA 2000-11 Buffer Tank with two heat exchangers	441	2 139	1 200	100	1,8 m ² + 1,8 m ²





CE

Buffers and boilers

PASKAL MIA



Advantages:



BASF glass-ceramic coating of the highest quality standard



Two anodes in each boiler



Rapid heating with Class B energy efficiency



Ability to connect to up to three heat sources



Option to install an electric heater



5 YEARS WARRANTY



Compatible with gas boilers, electric heaters, electric boilers, heat pumps, and solar panels

Suitable for:

Solid Fuel Boilers

Gas Boilers

Heat Pumps

Solar Collectors

PASKAL MIA

SPECIFICATIONS	DIAMETER	HEIGHT	HEAT TRANSFER AREA, UPPER HEAT EXCHANGER	HEAT TRANSFER AREA, LOWER HEAT EXCHANGER
Indirect heating boiler Paskal MIA 300	600	1 200		
Indirect heating boiler Paskal MIA 500	650	1 650		
Indirect heating boiler Paskal MIA 750	750	1 850		
Indirect heating boiler Paskal MIA 1000	850	1 960		
Indirect heating boiler Paskal MIA 1500	1 000	2 030		
Indirect heating boiler Paskal MIA 2000	1 200	2 040		
Indirect heating boiler Paskal MIA 300-01 lower heat exchanger	600	1 200	1,2	
Indirect heating boiler Paskal MIA 500-01 lower heat exchangers	650	1 650	1,8	
Indirect heating boiler Paskal MIA 750-01 lower heat exchangers	750	1 850	3,2	
Indirect heating boiler Paskal MIA 1000-01 lower heat exchangers	850	1 960	4,8	
Indirect heating boiler Paskal MIA 1500-01 lower heat exchangers	1 000	2 030	4,8	
Indirect heating boiler Paskal MIA 2000-01 lower heat exchangers	1 200	2 040	4,8	
Indirect heating boiler Paskal MIA 300-11 two heat exchangers	600	1 200	1,2	
Indirect heating boiler Paskal MIA 500-11 two heat exchangers	650	1 650	1,8	0,6
Indirect heating boiler Paskal MIA 750-11 two heat exchangers	750	1 850	3,2	1,2
Indirect heating boiler Paskal MIA 1000-11 two heat exchangers	850	1 960	4,8	1,3
Indirect heating boiler Paskal MIA 1500-11 two heat exchangers	1 000	2 030	4,8	1,8
Indirect heating boiler Paskal MIA 2000-11 two heat exchangers	1 200	2 040	4,8	1,8



BURNERS Paskal **MAX**



ADVANTAGES:

All burners are equipped with a cascade-type self-cleaning grate block, which is the easiest and most reliable ash cleaning system.

The grate block is easily removable, which facilitates maintenance.

Model Range:

**Paskal MAX 20,
30, 35, 50, 75, 100**

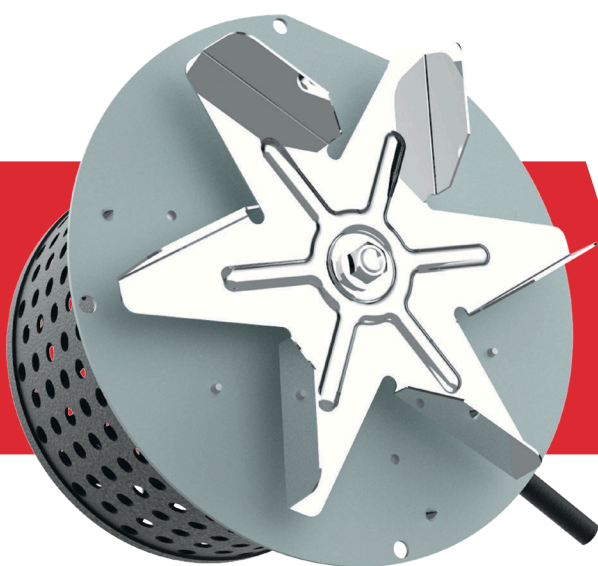
Material of all elements:

Heat-resistant stainless steel AISI 310s.
Grate thickness: Ranges from 3 to 6 mm.



VBH

Centrifugal Smoke extractor fan



CE

Characteristics:

Voltage supply:

230 V, 50 Hz

Electric motor:

AC external rotor motor

Insulation class:

«F»

Bearings:

industrial ball bearings

Temperature range:

-30 до +90 °C

Temperature of the exhaust air:

250° C max.

Hall Sensor

Model	Moltage (V/Hz)	Power (W)	Airflow (m3/h)	Pressure (P)	Speed (rpm)	Current (A)
VBH-150	230/50	33	196	200	2400	0,15
VBH-180	230/50	108	400	340	2170	0,48
VBH-210	230/50	120	580	390	2500	0,53

VFS

Forward curved centrifugal blowers in aluminum housing



Characteristics:

Voltage supply:
230 V, 50 Hz

Electric motor:
AC external rotor motor

Housing:
die cast aluminum alloy

Insulation class:
«B»

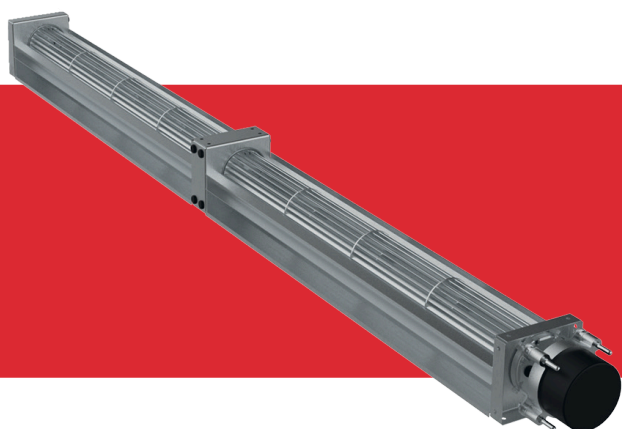
Bearings:
industrial ball bearings

CE

Model	Moltage (V/Hz)	Power (W)	Airflow (m3/h)	Pressure (P)	Speed (rpm)	Current (A)
VFS Fans						
VFS-120-2E-A-1	230/50	77	244	283	2680	0,37
VFS-120-2E-A-2	230/50	38	149	280	1950	0,17
VFS-120-2E-B-1	230/50	77	244	283	2680	0,37
VFS-120-2E-B-2	230/50	38	149	280	1950	0,17
VFS-140-2E-A-1	230/50	98	344	335	1530	0,42
VFS-140-2E-A-2	230/50	150	467	419	2400	0,66
VFS-160-2E-A-1	230/50	235	591	540	1900	1,03
VFS-120-EC-A-1	230/50	78	240	430	3700	0,65
VFS-120-EC-B-1	230/50	78	240	430	3700	0,65
VFS-140-EC-A-1	230/50	111	375	344	2730	0.92
VFS-160-EC-A-1	230/50	163	468	534	3000	1,32

VTM

Tangential modular fans



Characteristics:

Voltage supply:
24VDC

Electric motor:
EC (DC)

Housing:
galvanized steel with powder coating

Impeller:
aluminum

Speed control:
0-10VDC

Protection level:
IPX4



Model	Moltage (V/Hz)	Power (W)	Airflow (m3/h)	Speed (rpm)	Current (A)
VTM-33-250-1	24	1,92	60	2000	0,08
VTM-33-250-2	24	3,12	120	2000	0,13
VTM-33-250-3	24	4,32	180	2000	0,18
VTM-33-300-1	24	2,16	70	2000	0,09
VTM-33-300-2	24	3,6	140	2000	0,15
VTM-33-300-3	24	5,28	210	2000	0,22
VTM-33-350-1	24	2,4	80	2000	0,1
VTM-33-350-2	24	4,08	160	2000	0,17
VTM-33-350-3	24	6,24	240	2000	0,26
VTM-43-250-1	24	2,88	80	1600	0,12
VTM-43-250-2	24	3,84	180	1600	0,16
VTM-43-250-3	24	6	240	1600	0,25
VTM-60-250-1	24	4,32	120	1600	0,18
VTM-60-250-2	24	5,76	240	1600	0,24
VTM-60-250-3	24	8,64	360	1600	0,36



CE

Electric boilers

TENKO SMART

Advantages:



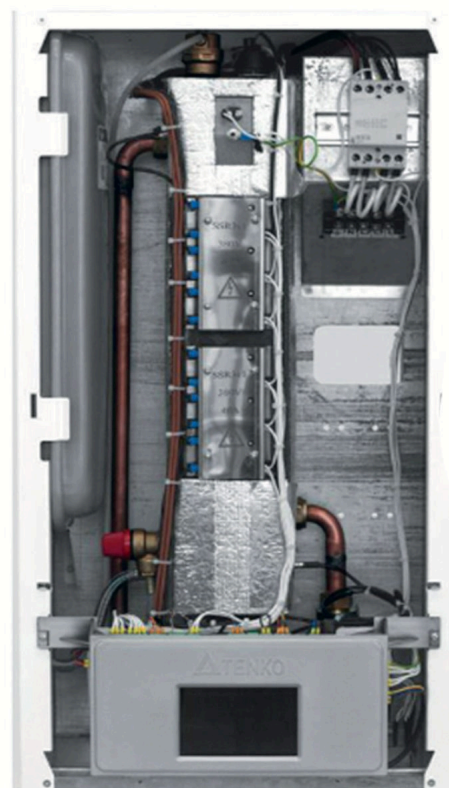
SMART series - intelligent, reliable, efficient premium class boilers

- ✓ The 5" touch color display allows you to easily adjust the parameters and monitor the operation of the boiler.
- ✓ Maximum comfort thanks to a variety of functions: control of the heating circuit, floor heating circuit and indirect heating boiler; Timer for setting the work schedule, quick mode change «Comfort» / «Eco», ability to connect a wireless sensor.
- ✓ Quiet operation of the boiler thanks to the triac relay of our own production.
- ✓ High energy efficiency through modulation of the boiler output and targeted operation of heating elements.
- ✓ Reliable protection system: built-in RCD protection device, protection against overheating, «antifreeze» function.
- ✓ Premium equipment: 7 l expansion tank of European production, circulation pump with frequency controller, copper cabling, high-quality heat exchanger from our own production.
- ✓ Accounting statistics on electricity consumption.

TENKO SMART

Construction and complete set

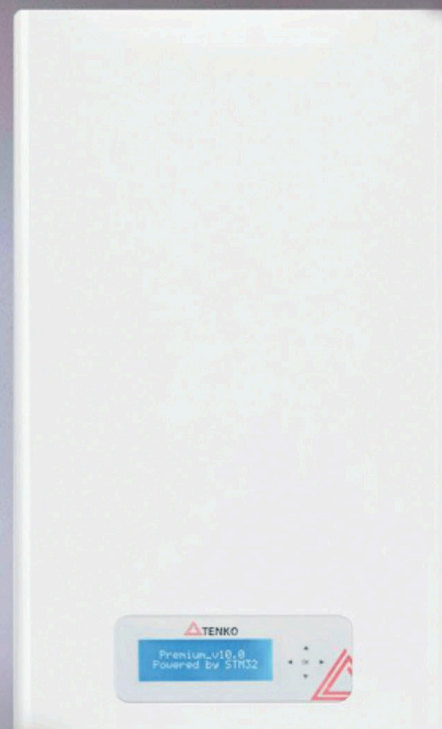
- ▶ Automatic ventilation
- ▶ Emergency thermal relay
- ▶ Expansion vessel of European production
- ▶ Power relay trademark TENKO
- ▶ Modular contactor
- ▶ Terminal block for connecting power cables
- ▶ Safety valve
- ▶ Current sensor
- ▶ Heat exchanger
- ▶ Block of heating elements TENKO
- ▶ Circulation pump with frequency controller
- ▶ Air temperature sensor
- ▶ Heat carrier inlet (return)
- ▶ Heat carrier outlet (supply)
- ▶ Heat carrier temperature sensor (return)
- ▶ Heat carrier temperature sensor (supply)



Control and Management

- ▶ Switch «ON-OFF»
- ▶ Digital pressure sensor
- ▶ Touching the 5" color display allows you to configure parameters and monitor the operation of the boiler
- ▶ Control board of TENKO trademark

Nominal power, kW	6	9	12	15	18	21	24	30	36
Supply voltage, V	230/400	230/400	230/400	400	400	400	400	400	400
Electricity frequency in the network, Hz	50/60								
Heating element - block, Number of electric tubular heaters	6 (2 Blocks of 3 electric tube heaters each)								
The maximum pressure in the system, Bar	3	3	3	3	3	3	3	3	3
Heating control range, °C	Digital: Water from 10 °C to 75 °C, Room temperature from 7 °C to 40 °C								
Connecting pipes, inches	3/4"								
Heat storage capacity, dm ³	7,5								
Overall dimensions, mm, H x W x D	740 x 410 x 256,5								
Net weight, no more, kg	32				34				
Order number	96540	96694	96696	96596	96697	96698	96699	96700	96701



CE

Electric boilers

TENKO Premium+ Advantages:



The Premium+ series is a perfect engineering system and creates coziness

- ✓ With the integrated daily/weekly programmer you can set the desired operating mode taking into account your rhythm of life.
- ✓ Power modulation and a built-in electronic meter significantly reduce power consumption.
- ✓ The built-in microcontroller and software control system ensure complete control and reliable operation of the boiler.
- ✓ The integrated Wi-Fi module allows you to control the boiler and monitor its condition from anywhere in the world.
- ✓ A digital display that shows the current settings and service information provides additional COMFORT.

Premium features:



Circulation pump with frequency controller



Integrated Wi-Fi module

TENKO Premium+

Construction and complete set

- ▶ Automatic ventilation
- ▶ Emergency thermal relay
- ▶ Heat exchanger
- ▶ Expansion tank of European production
- ▶ Solid state relay with water cooling
- ▶ of in-house production
- ▶ Block of heating elements
- ▶ Power connection terminal
- ▶ Digital pressure sensor
- ▶ Circulation pump
- ▶ Temperature sensors
- ▶ Connecting pipes



Control and Management

- ▶ Display for convenient setting and reading of current and service information
- ▶ Navigation and control buttons
- ▶ Buttons for turning on the network, maintenance mode and minimum temperature

Nominal power, kW	6	9	12	15	18	21	24	30	36
Supply voltage, V	230/400	230/400	230/400	400	400	400	400	400	400
Electricity frequency in the network, Hz	50								
Heating element - block, Number of electric tubular heaters	6 (2 Blocks of 3 electric tube heaters each)								
The maximum pressure in the system, Bar	3								
Heating control range, °C	Digital: Water from 10 °C to 75 °C, Room temperature from 7 °C to 40 °C								
Connecting pipes, inches	3/4"								
Heat storage capacity, dm ³	6,5								
Overall dimensions, mm, H x W x D	740 x 415 x 285								
Net weight, no more, kg	32					33			
Order number	51154	51242	51243	51244	51245	51246	51247	51248	51163



Electric boilers

TENKO Digital Standart+ Advantages:



Digital Standart+ series - are perfect engineering solutions for maximum **COMFORT**

- ✓ Digital control and two built-in sensors – heat transfer temperature and room temperature allow you to save electricity.
- ✓ Increased efficiency: Control of the activation time of the circulation pump - before and after activation of heating elements.
- ✓ Stepless control of the temperature in the heating circuit and the ability to select the boiler operating mode depending on the temperature of the heat transfer medium or the airgap temperature in the room ensure additional COMFORT.
- ✓ Silent operation thanks to solid state relays.
- ✓ New touch screen.
- ✓ Complete hydraulic safety group:
 - built-in expansion tank of European production
 - automatic air vent
 - digital pressure sensor
 - safety valve
- ✓ Additional electrical PROTECTION – duplication of the modular contactor.
- ✓ High-quality powder coating of the housing.
- ✓ Two color options - white and titanium noble.

TENKO Digital **Standart+**

Construction and complete set

- ▶ Automatic air vent
- ▶ Emergency thermal relay
- ▶ Digital pressure sensor
- ▶ Expansion tank of European production
- ▶ Heat exchanger made of high quality steel 3 mm
- ▶ Block of heating elements
- ▶ Circulation pump
- ▶ Safety valve 3 bar
- ▶ Inlet pipe 3/4"
- ▶ Outlet pipe 3/4"



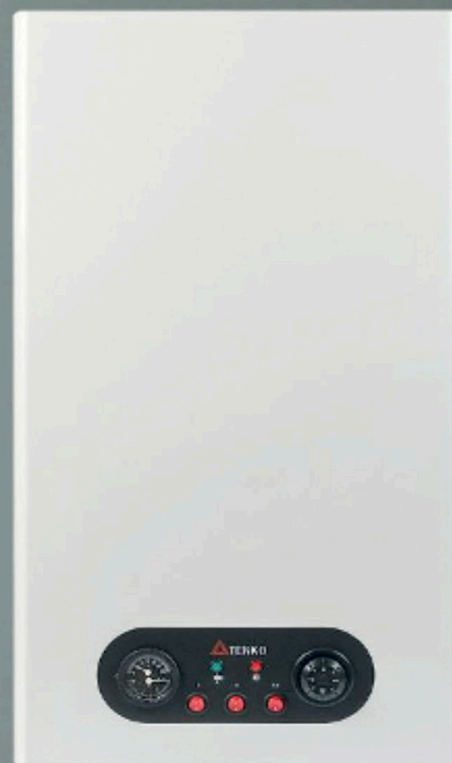
Control and Management

- ▶ Light indicators
- ▶ Touch screen

Nominal power, kW	6	6	9	12	15	18	21	24	30	36
Supply voltage, V	220	380	380	380	380	380	380	380	380	380
Electricity frequency in the network, Hz	50									
Heating element - block, Number of electric tubular heaters	3	3	3	6	6	6	6	6	6	6
The maximum pressure in the system, Bar	3									
Heating control range, °C	Digital: Water from 20 °C to 75 °C, Airgap from 10 °C to 40 °C									
Connecting pipes, inches	3/4"									
Heat storage capacity, dm ³	1,7	1,7	1,7	6,6	6,6	6,6	6,6	6,6	6,6	6,6
Overall dimensions, mm, H x W x D	675 x 383 x 235									
Net weight, no more, kg	30	30	30	35	35	35	35	35	35	35
Order number	65764	65765	65758	65705	65766	65750	65767	65776	65768	65769



CE



Electric boilers

TENKO **Standart+**

Advantages:

 **TENKO**

The **Standart+** series
is elegance and
reliability

- ✓ Economical power consumption thanks to stepless regulation.
- ✓ Heating circuit from 0 to +90 °C.
- ✓ Blocks of heating elements made in-house.
- ✓ Expansion vessel of European production.
- ✓ Hydraulic safety group of European production.
- ✓ Analogue pressure relay.
- ✓ There is an option to connect a programmer.
- ✓ High quality powder coating.

TENKO Standart+

Construction and complete set

- ▶ Automatic ventilation
- ▶ Emergency thermal relay
- ▶ Analogue pressure switch
- ▶ Circulation pump
- ▶ Heat exchanger
- ▶ Expansion tank
- ▶ Safety valve
- ▶ Block of heating elements
- ▶ Connecting pipes
- ▶ Power connection terminal



Control and Management

- ▶ Thermomanometer
- ▶ Thermostat
- ▶ Buttons on/off and heating levels
- ▶ Light indicators
- ▶ Control unit with terminals for power and connection of external devices

Nominal power, kW	6	9	12	15	18	21	24	30	36
Supply voltage, V	230/400	230/400	400	400	400	400	400	400	400
Electricity frequency in the network, Hz	50								
Heating element - block, Number of electric tubular heaters	6								
The maximum pressure in the system, Bar	3								
Heating control range, °C	Analog: from 0 °C to 90 °C								
Connecting pipes, inches	3/4"								
Heat storage capacity, dm ³	6,5								
Overall dimensions, mm, H x W x D	740 x 415 x 285								
Net weight, no more, kg	31	31	31	31	32	32	32	32	32
Order number	97093	97097	97096	97098	97099	97100	97101	97102	97103



CE

Electric boilers

TENKO Econom

Advantages:

 **TENKO**

The Econom series is a popular solution for thrifty owners

- ✓ Simple, reliable construction.
- ✓ COMFORT with control of the heating circuit.
- ✓ Possibility of connecting a circulation pump, room thermostat, programmer, necessary relays and sensors.
- ✓ High quality powder coating body.
- ✓ Heating elements made in-house.
- ✓ Attractive price.

TENKO Econom

Construction and complete set

- ▶ Inlet pipe
- ▶ Emergency thermal relay
- ▶ Heat exchanger made of high-quality steel 3 mm
- ▶ Block of heating elements
- ▶ Safety valve 3 Bar
- ▶ Outlet pipe



Control and Management

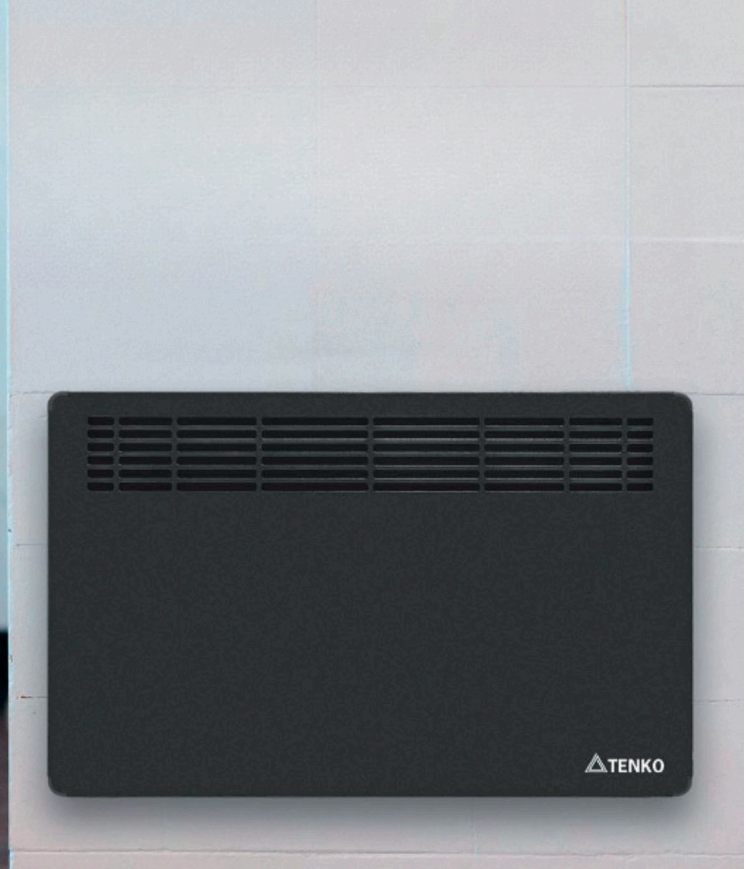
- ▶ Thermometer
- ▶ Heat level buttons
- ▶ Light indicators
- ▶ Thermostat
- ▶ Control board from 3 to 7,5 kW
- ▶ Device connection terminal

Increased performance by installing additional heating elements

Nominal power, kW	3	4,5	6	7,5	9	10,5	12	15	18	21	24	30
Supply voltage, V	220	220/380			380							
Electricity frequency in the network, Hz	50											
Heating element - block, Number of electric tubular heaters	3								6			
The maximum pressure in the system, Bar	3											
Heating control range, °C	Analog: from 0 °C to 90 °C											
Connecting pipes, inches	3/4"								1"			
Heat storage capacity, dm3	1,7								6			
Overall dimensions, mm, H x W x D	581 x 189 x 97								623 x 262 x 97			
Net weight, no more, kg	9											
Order number	50208	49013 50240	49014 49015	49016 49017	49018	49023	49011	49012	45959	95960	95944	95940



CE



Electric convectors

TENKO Electric CONVECTORS Advantages:



Electric CONVECTORS -
practical, fast, modern!

- ✓ The air gap is heated quickly and evenly through convection.
- ✓ Safe to use: integrated overheating protection.
- ✓ Economical energy consumption – automatically maintains the temperature.
- ✓ One or two heat settings.
- ✓ Easy management.
- ✓ Light indicator for operation.
- ✓ Practical cardboard packaging with a handle for transport.
- ✓ Possibility of stationary or mobile installation: Equipped with a Euro cable and mounting brackets.
- ✓ Legs for mobile installation (optional).
- ✓ Two colors: white or graphite.

TENKO Electric CONVECTORS



Technical characteristics:

- ▶ **Electronic control unit:** convenient setting and control of device operation. Energy savings.
- ▶ All models with markings ENK (xd)
- ▶ ***Closed heating element***
with aluminum diffuser to increase the surface area and material characteristics.
- ▶ Has increased heat power, the air does not dry out.
- ▶ All models with markings ENK (X), ENK (XD)

Order number	Model	Power, W	Rated current consumption, A	Overall dimensions, mm, HxWxD	Heating area, m ²	Weight, kg	Type of heating element	Color
96383	ENK(C)1000	1000	4,4	726 x 466 x 75	10	5,5	open	White
96384	ENK(C)1500	1500	6,5	726 x 466 x 75	15	5,5	open	White
96385	ENK(X)500	500	2,2	476 x 466 x 75	5	3,8	closed	White / Graphite
96386	ENK(X)1000	1000	4,4	726 x 466 x 75	10	3,8	closed	White / Graphite
96387	ENK(X)1500	1500	6,5	726 x 466 x 75	15	5,8	closed	White / Graphite
96389	ENK(X)2000	2000	8,7	826 x 466 x 75	20	7,2	closed	White / Graphite
96390	ENK(X)2500	2500	10,9	1006 x 466 x 75	25	7,6	closed	White / Graphite
96718	ENK(XD)1000	1000	4,4	726 x 466 x 75	10	5,8	closed	White / Graphite
96720	ENK(XD)1500	1500	6,5	826 x 466 x 75	15	7,2	closed	White / Graphite
96722	ENK(XD)2000	2000	8,7	1006 x 466 x 75	20	7,6	closed	White / Graphite

Heating elements for towel dryers

Application:

Installation in towel dryers of any type, design and construction. With the help of a threaded connection, installation is possible on both the left and right. Built-in electronic thermostat with high precision adjustment (0.1°C) prevents overheating and excessive power consumption. Temperature regulation from +10 °C to +65 °C. Frost protection function +10 °C. Heating indicator.



RS heating elements for boilers

Application:

For boilers from 1000 to 3000 W. Easy installation and connection (nut/head with 6 sites, cable with plug). Can be used in/with various environments and heat media. Possibility of installation in existing heating devices. Smooth temperature regulation thanks to the practical outdoor thermostat from +30 °C to +75 °C Automatic maintenance of the set temperature. Longer service life thanks to the "cold" zone in the lower body area. Two-stage PROTECTION against overheating: built-in thermostat, mechanical reset button.



Electric water heater (Series VE)

Application:

For installation in instantaneous heating systems for industry and households. The type of heating is a block of 3 heating elements made of stainless steel. (Series VE) Housing with powder coating and anti-corrosion treatment for long-lasting power. Diameter of connecting pipes: 1 1/4" inches. The set includes reliable clamps for wall mounting.



VE + with Thermostat

Application:

Electric water heater with thermostat, suitable for use in the instantaneous system. Heating with existing safety group and circulation pump, as a complement to a solid fuel or gas boiler. It is a heat exchanger with a TEN block screwed onto the flange with a thermostat in a protected metal case. Power from 3 to 12 kW. Connection to the heating system 1 1/4 inch. Maximum pressure in the system 3 bar. Advantages are the easy installation and connection to the power grid. Brackets and anchors for fastening are included.



Adjustable heating block (BNR)

Application:

Heating liquids in tanks and containers, as well as in heating systems with a volume of not more than 30 liters. It consists of a block of heating elements, capillary thermostat with double overheating protection COTHERM (France), protective cover with sealing rings. The material of the of heating elements is stainless, heat-resistant steel. The material of the flange of the of heating elements is brass (LC59). The housing material is stainless steel. Easy to install, use and maintain.



DJOUL BRASS UNDERFLOOR HEATING COLLECTOR

Article	Size	Connection
DJ260152SS	2 outlets * 1"	G 3/4"
DJ260153SS	3 outlets * 1"	G 3/4"
DJ260154SS	4 outlets * 1"	G 3/4"
DJ260155SS	5 outlets * 1"	G 3/4"
DJ260156SS	6 outlets * 1"	G 3/4"
DJ260157SS	7 outlets * 1"	G 3/4"
DJ260158SS	8 outlets * 1"	G 3/4"
DJ260159SS	9 outlets * 1"	G 3/4"
DJ2601510SS	10 outlets * 1"	G 3/4"
DJ2601511SS	11 outlets * 1"	G 3/4"
DJ2601512SS	12 outlets * 1"	G 3/4"



CE



Pressure: 10 bar



Eurokonus

Thermostatic
valveFrom 2 to 12
outletsTemperature:
90 °C

DJOUL STAINLESS STEEL UNDERFLOOR HEATING COLLECTOR

Article	Size	Connection
DJ2016202A-E	2 outlets * 1"	G 3/4"
DJ2016203A-E	3 outlets * 1"	G 3/4"
DJ2016204A-E	4 outlets * 1"	G 3/4"
DJ2016205A-E	5 outlets * 1"	G 3/4"
DJ2016206A-E	6 outlets * 1"	G 3/4"
DJ2016207A-E	7 outlets * 1"	G 3/4"
DJ2016208A-E	8 outlets * 1"	G 3/4"
DJ2016209A-E	9 outlets * 1"	G 3/4"
DJ2016210A-E	10 outlets * 1"	G 3/4"
DJ2016211A-E	11 outlets * 1"	G 3/4"
DJ2016212A-E	12 outlets * 1"	G 3/4"



CE

DJOUL UNDERFLOOR HEATING PIPE

PE-RT PIPE (TYPE II)

Features:

- ▶ 3-layer coating
- ▶ Oxygen barrier
- ▶ Diameter: 16 mm
- ▶ Available sizes: 240 m and 600 m
- ▶ Temperature resistance: up to 110 °C



DJOUL Underfloor Heating Accessories:



Collector end piece with automatic valve



Reducing nipple



Eurocone fittings



Monoblock collector end piece



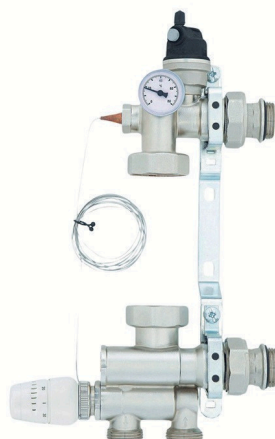
Flow meter



Thermostatic valve



Pipe uncoiler



Mixing unit



Corner pump unit kit for underfloor heating without pump



Nipple



Thermostatic head with immersion sensor



Pump unit

DISTRIBUTION CABINETS:



External cabinet

SPECIFICATIONS	SIZE	WEIGHT	PACKAGING
DJOUL OMC-00	360x580x120	5,4	1
DJOUL OMC-01	420x580x120	6,7	1
DJOUL OMC-02	550x580x120	7,6	1
DJOUL OMC-03	700x580x120	8,9	1
DJOUL OMC-04	780x580x120	9,8	1
DJOUL OMC-05	950x580x120	11,6	1
DJOUL OMC-06	1150x580x120	12,8	1



Internal cabinet

SPECIFICATIONS	SIZE	WEIGHT	PACKAGING
DJOUL WCB-00	360x580x110	4,5	1
DJOUL WCB-01	480x580x110	5,2	1
DJOUL WCB-02	610x580x110	6,6	1
DJOUL WCB-03	760x580x110	7,5	1
DJOUL WCB-04	845x580x110	8,1	1
DJOUL WCB-05	1015x580x110	9,5	1
DJOUL WCB-06	1150x580x110	11,7	1



«LUX» cabinet

SPECIFICATIONS	SIZE	WEIGHT	PACKAGING
DJOUL WCBL-00	360x580x140	5,6	1
DJOUL WCBL-01	420x580x140	6,9	1
DJOUL WCBL-02	550x580x140	7,85	1
DJOUL WCBL-03	700x580x140	9,2	1
DJOUL WCBL-04	780x580x140	10,15	1
DJOUL WCBL-05	950x580x140	11,9	1
DJOUL WCBL-06	1150x580x140	13,15	1



Advantages:

Easy to install

Automated production

European design

Pipe connections from the sides or bottom



HEATING EQUIPMENT

