



PROFESSIONAL OEM&ODM
THERMOSTAT MANUFACTURER



Electric & Water Underfloor Heating Thermostats

ISO 9001:2015, ISO14001:2015



- 20 YEARS THERMOSTAT ODM EXPERIENCE
- EXPORT TO 35 COUNTRIES
- MANUFACTURER FOR TOP BRANDS
- CE, FCC, IC COMFORMED
- DESIGN FOR ALL HVAC SYSTEM
- ENVIRONMENTAL MANUFACTURING

Underfloor Heating Thermostats

7

7 days 4 periods programmable



Open window detection



Frost protection



High temperature protection



Child lock



Manual Mode
Auto Mode
Economy Mode



Adjustable Switching Differential



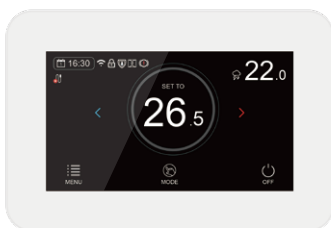
External sensor in option



Heat/Cool in option



ZigBee / WiFi



HT-CS03



HT-CS08



HT-CS01



HT-CS06

Underfloor Heating Thermostats

Specification

- Power Supply:**
AC230V; 50/60Hz
- Rating Max.:**
16A or 3A
- Setpoint Range:**
5-35 °C
- Accuracy:**
±0.5 °C
- Ambient:**
0~50 °C
- Protection Class:**
IP20
- Sensor:**
R25 °C=10KΩ β=3950
- Shell Material:**
PC+ABS(Fire-resistance)
- Power Consumption:**
< 0.5W



HT-07



HT-08



HT-09



HT-70



HT-22



HT-CS70



HT-23



HT-CS23

Underfloor Heating Thermostats

Specification

Power Supply:

AC230V; 50/60Hz

Rating Max.:

16A or 3A

Setpoint Range:

5-35 °C

Accuracy:

±0.5 °C

Ambient:

0~50 °C

Protection Class:

IP20

Sensor:

R25 °C=10KΩ β=3950

Shell Material:

PC+ABS(Fire-resistance)

Power Consumption:

< 0.5W



HT-66



HT-68



HT-03

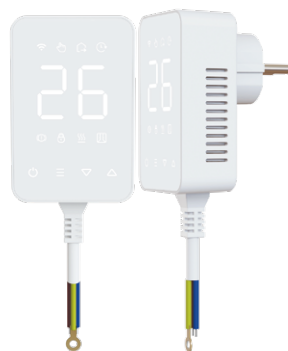
(Mechanical)



HT-04









HT-04-NP



HT-82

Wiring Centres

-  Can work up to 16 room thermostats
-  Boiler and Pump delay time settable
-  ModbusRS485 in optional
-  Can work up to 16 thermal actuators
-  Convenient wiring and installation
-  WiFi in optional

Specification

Max. load: 3A

Boiler output:

Voltage-free

Heat pump output:

AC230V

Main cable: 1 meter

Frequency:

868MHz/433MHz

Wireless distance:

120m in open place

Protection class:

IP20

Material: ABS+PC

Power Consumption :

< 0.5W

Wireless 8/16 Zones Controller

HR-02-RF

Dimension

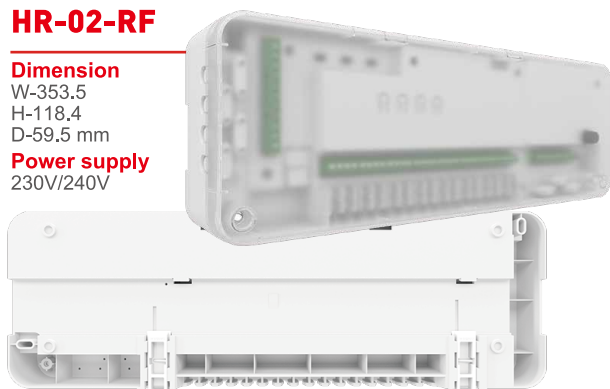
W-353.5

H-118.4

D-59.5 mm

Power supply

230V/240V



Wireless 8/16 Zones Controller

HR-03-RF

Dimension

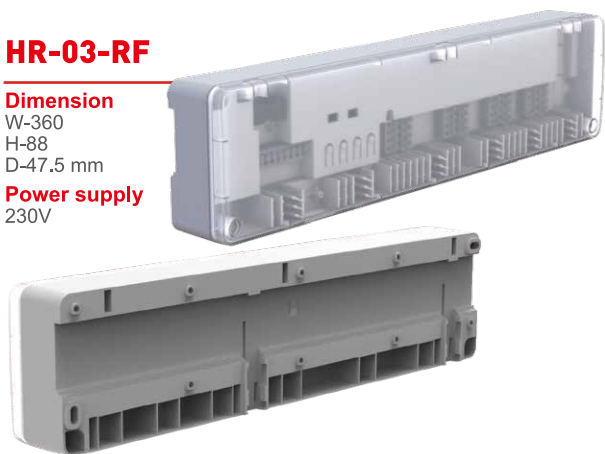
W-360

H-88

D-47.5 mm

Power supply

230V



Mounting Type


Surface Wall Installation or DIN rail mounting



Wiring Centres

 Can work up to 8 room thermostats

 Convenient wiring and installation

 Can work up to 5 thermal actuators each zones

 DIN rail function

Specification

Power supply:

AC230V

Max. load:

5(2)A/output

Boiler output:

Voltage-free

Heat pump output:

230V

Main cable:

1 meter

Protection class:

IP20

Material:

ABS+PC

Power Consumption:

0,5W

Wired 8 Zones Controller

HR-02-C

Dimension

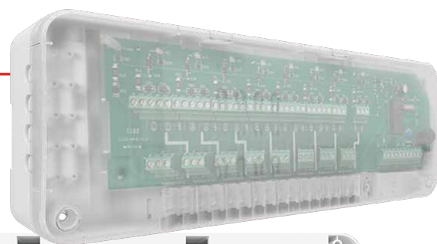
W-353,5

H-118,4

D-59,5 mm

Power supply

230V



Wired 8 Zones Controller

HR-03-C

Dimension

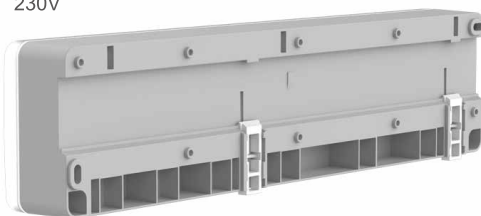
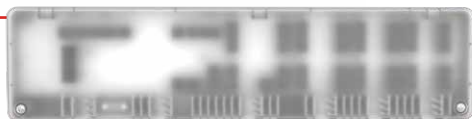
W-360

H-88

D-47,5 mm

Power supply

230V



Mounting Type

Surface Wall Installation or DIN rail mounting



Thermostat Radiator Valves



TR-01:LED display
with white backlight
HT-10:LCD display
with white backlight



TR-01:7 days 4 period
program (App only)
HT-10:7 days 4 period
program



Manual Mode
Auto Mode
Economy Mode



Step control
motor



PID control(default)/
ON-OFF control



Open window
detection



Frost protection



Child lock

Specification

Thermostat Supply:

2xAA 1.5V alkaline battery

Setpoint Range: 5-35 °C

Accuracy: ±1 °C

Ambient: 0~50 °C

Protection Class: IP30

Sensor:

R25 °C=10KQ β=3950

Shell Material:

PC+ABS(Fire-resistance)



TR-01

Dimension
φ50*69 mm



HT-10

Dimension
φ55*68.9 mm



Adapters



RA Danfoss



RAV Danfoss



RAVL Danfoss



Giacomini



Caleffi



M28x1.5



Pin&Nuts

Wireless Thermostats

7 7 days 4 period programmable

Open window detection

Manual Mode
Auto Mode
Economy Mode

D Adjustable Switching Differential

Frost protection

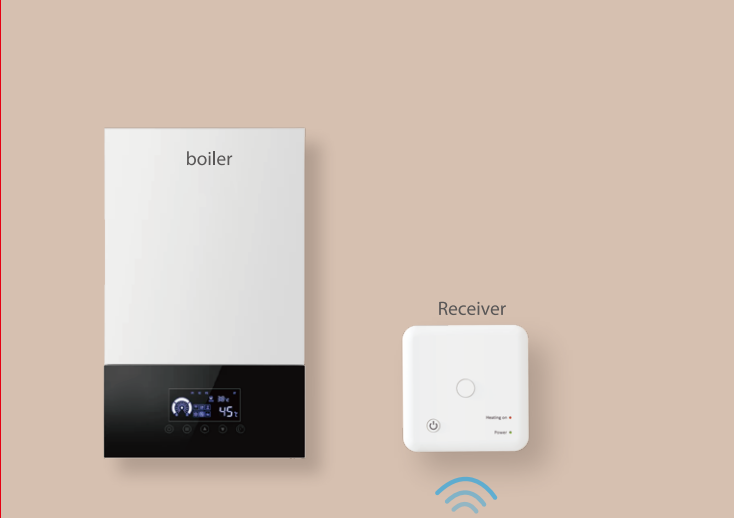
Child lock

OpenTherm in option

Frequency 868mhz with range 120m in the open area

Heat/Cool in option

WIFI connection in option



Wireless Receiver Compatible with all Wireless Transmitter

Users can choose the thermostat that best fits their requirements with the receiver most appropriate their heating/Cooling devices.



WT-02



WT-02-NP



WT-08



WT-11

Wireless Thermostats

Specification

- Thermostat Supply:
2xAAA 1.5V alkaline battery
- Receiver Supply:
AC230V; 50/60HZ
- Rating Max.:
10A
- Setpoint Range:
5-35 C
- Accuracy:
±0.5 C
- Ambient:
0~50 C
- Protection Class:
IP30
- Sensor:
R25 C=10KΩ β=3950
- Shell Material:
PC+ABS(Fire-resistance)
- Power Consumption:
< 0.5W



WT-15



WT-15-NP



WT-25



WT-25-NP



WT-20



WT-75



WT-76



Receiver

Battery Room Thermostats

7 7 days 4 period
programmable

Open window
detection

Manual Mode
Auto Mode
Economy Mode

D Adjustable
Switching
Differential

Frost
protection

Child lock

OpenTherm
in option

Frequency 868mhz
with range 120m in
the open area

Heat/Cool in
option

WIFI connection
in option



HT-02



HT-02-NP



HT-11



HT-20

Battery Room Thermostats

Specification

- Thermostat Supply:**
2xAAA 1.5V alkaline battery
- Rating Max.:**
0.5A
- Setpoint Range:**
5-35 C
- Accuracy:**
±0.5 C
- Ambient:**
0~50 C
- Protection Class:**
IP30
- Sensor:**
R25 C=10KQ β =3950
- Shell Material:**
PC+ABS(Fire-resistance)
- Power Consumption:**
< 0.5W



HT-15



HT-15-NP



HT-25



HT-25-NP



HT-75



HT-76

Mounting Type
Surface Wall Installation



Hello



Driven by innovation, responsibility and passion, E-Top aims to provide professional HVAC control solutions to global customers. Our 20 years of thermostat ODM experience have helped to create a sustainable world with less carbon emission, while bringing more comfort to human life. We are committed to bring high level products and technical supports to the customers with continuous investment to the climate lab, facilities, advanced researching and management tools such as FMEA, APQP, PPAP for thermostat development. The devotion to thermostat has made E-Top as a reliable player in the HVAC industry, also form E-Top's advantages compared to other competitors.

-  **Location:** Xiamen, China
-  **Year of Establishment:** 2003
-  **Factory area:** 8000 m²
-  **Number of Employees:** 100~200
-  **Member of R&D team:** 20
-  **Sales Network:** Europe, US, South US, Asia, EMEA
-  **Management System:** ISO9001:2015, ISO14001:2015
-  **Manufacturing capacity:** 5000PCS/Day
-  **Business Focus:** only Thermostat
-  **Production structure :** SMT/Plug-in/Injection/Print/
Assembly/Aging/Validation Lab/IQC, IPQC/Packaging



XIAMEN E-TOP CONTROLS TECHNOLOGY CO.,LTD

-  +86-0592-6155792
-  <http://www.etopcontrols.com>
-  info@etopcontrols.com
-  No.6, Meixi Rd., Tong'an Industrial Park, Tong'an, Xiamen, China 361100