



**SGI**

underfloor heating components

# **PRODUCT** CATALOGUE



# TACKER CLIPS

## TAPED & WELDED

Tacker clips are designed for fixing pipes from diameter of 14 to 22mm. Clips are fixed to the ground manually or with help of tacker gun → see code 104 from our tools. Product is universal and compatible with all types of taker guns available on the market. Staples are in sets of 25 pieces connected together with tape or welded. It is a product with a wide range of applications, primarily in the screeded floor. The pipe system is fastened with clips to Styrofoam with foil. Styrofoam guarantees adequate thermal insulation and the foil acts as an anti-moisture barrier.

13511

### TACKER CLIPS CONNECTED WITH TAPE 35 MM



**Material** Polypropylene black

**Insertion depth** 17 mm

**Dedicated for pipe diameters:** ø14,16,17,18, 20mm

**Fastened in sets each** 25pcs

**Packaging:** Single pack box 300 pcs / multi pack 20 x box 300 pcs

**Pallet:** 480 boxes each 300 pcs → 24 multi packs

**Pallet dimension:** 1200x800x220mm ; gros weight 230 kg

14011

### TACKER CLIPS CONNECTED WITH TAPE 40 MM



**Material** Polypropylene black

**Insertion depth** 22 mm

**Dedicated for pipe diameters:** ø14,16,17,18, 20mm

**Fastened in sets each** 25pcs

**Packaging:** single pack box 300 pcs / multi pack 20 x box 300 pcs

**Pallet:** 480 boxes each 300 pcs → 24 multi packs

**Pallet dimension:** 1200x800x220mm ; gros weight 260 kg

14031

### TACKER CLIPS THERMALLY WELDED 40 MM



**Material** Polypropylene black

**Insertion depth** 22 mm

**Dedicated for pipe diameters:** ø14,16,17,18, 20mm

**Fastened in sets each** 25pcs

**Packaging:** single pack box 300 pcs / multi pack 20 x box 300 pcs

**Pallet:** 480 boxes each 300 pcs → 24 multi packs

**Pallet dimension:** 1200x800x220mm ; gros weight 260 kg

14311

### TACKER CLIPS CONNECTED WITH TAPE 43 MM



**Material** Polypropylene black

**Insertion depth** 25 mm

**Dedicated for pipe diameters:** ø14,16,17,18, 20mm

**Fastened in sets each** 25pcs

**Packaging:** single pack box 300 pcs / multi pack 20 x box 300 pcs

**Pallet:** 480 boxes each 300 pcs 24 multi packs

**Pallet dimension:** 1200x800x220mm ; gros weight 270 kg

14331

### TACKER CLIPS THERMALLY WELDED 43 MM



**Material** Polypropylene black

**Insertion depth** 25 mm

**Dedicated for pipe diameters:** ø14,16,17,18, 20mm

**Fastened in sets each** 25pcs

**Packaging:** Single pack box 300 pcs / multi pack 20 x box 300 pcs

**Pallet:** 480 boxes each 300 pcs → 24 multi packs

**Pallet dimmension:** 1200x800x220mm ; gross weight 270 kg

15011

### TACKER CLIPS CONNECTED WITH TAPE 50 MM



**Material** Polypropylene black

**Insertion depth** 30 mm

**Dedicated for pipe diameters:** ø14,16,17,18, 20mm

**Fastened in sets each** 25pcs

**Packaging:** single pack box 300 pcs / multi pack 20 x box 300 pcs

**Pallet:** 480 boxes each 300 pcs → 24 multi packs

**Pallet dimmension:** 1200x800x220mm ; gross weight 330 kg

15031

### TACKER CLIPS THERMALLY WELDED 50 MM



**Material** Polypropylene black

**Insertion depth** 30 mm

**Dedicated for pipe diameters:** ø14,16,17,18, 20mm

**Fastened in sets each** 25pcs

**Packaging:** single pack box 300 pcs / multi pack 20 x box 300 pcs

**Pallet:** 480 boxes each 300 pcs → 24 multi packs

**Pallet dimmension:** 1200x800x220mm ; gross weight 330 kg

25011

### TACKER CLIPS CONNECTED WITH TAPE 50 MM DOUBLE HOOK



**Material** Polypropylene black

**Insertion depth** 30mm

**Dedicated for pipe diameters:** ø14,16,17,18, 20mm

**Fastened in sets each** 25pcs

**Packaging:** single pack box 300 pcs / multi pack 20 x box 300 pcs

**Pallet:** 480 boxes each 300 pcs → 24 multi packs

**Pallet dimmension:** 1200x800x220mm ; gross weight 340 kg

25031

#### TACKER CLIPS THERMALLY WELDED 50 MM DOUBLE HOOK



**Material** Polypropylene black

**Insertion depth** 30 mm

**Dedicated for pipe diameters:** ø14,16,17,18, 20mm

**Fastened in sets each** 25pcs

**Packaging:** Single pack box 300 pcs / multi pack 20 x box 300 pcs

**Pallet:** 480 boxes each 300 pcs → 24 multi packs

**Pallet dimension:** 1200x800x220mm ; gross weight 340 kg

16011

#### TACKER CLIPS CONNECTED WITH TAPE 60 MM



**Material** Polypropylene black

**Insertion depth** 40 mm

**Dedicated for pipe diameters:** ø14,16,17,18, 20mm

**Fastened in sets each** 25pcs

**Packaging:** single pack box 300 pcs / multi pack 20 x box 300 pcs

**Pallet:** 480 boxes each 300 pcs → 24 multi packs

**Pallet dimension:** 1200x800x220mm ; gross weight 375 kg

16031

#### TACKER CLIPS THERMALLY WELDED 60 MM



**Material** Polypropylene black

**Insertion depth** 40 mm

**Dedicated for pipe diameters:** ø14,16,17,18, 20mm

**Fastened in sets each** 25pcs

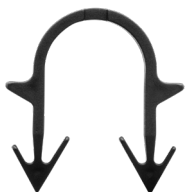
**Packaging:** single pack box 300 pcs / multi pack 20 x box 300 pcs

**Pallet:** 480 boxes each 300 pcs → 24 multi packs

**Pallet dimension:** 1200x800x220mm ; gross weight 375 kg

13522

### TACKER CLIPS LOOSE PACKED IN BULK 35 MM



**Material** Polypropylene black

**Insertion depth** 17 mm

**Dedicated for pipe diameters:** ø14,16,17,18, 20mm

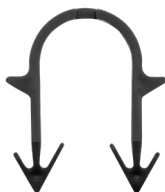
**Packaging:** loose in bag → 200 pcs / multi pack 30 bags

**Pallet:** 720 bags each 200 pcs → 24 multi packs

**Pallet dimmension:** 1200x800x220mm ; gross weight 300 kg

14022

### TACKER CLIPS LOOSE PACKED IN BULK 40 MM



**Material** Polypropylene black

**Insertion depth** 22 mm

**Dedicated for pipe diameters:** ø14,16,17,18, 20mm

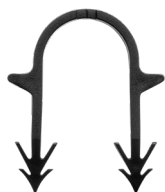
**Packaging:** loose in bag → 200 pcs / multi pack 30 bags

**Pallet:** 720 bags each 200 pcs → 24 multi packs

**Pallet dimmension:** 1200x800x220mm ; gross weight 330 kg

14322

### TACKER CLIPS LOOSE PACKED IN BULK 43 MM



**Material** Polypropylene black

**Insertion depth** 25 mm

**Dedicated for pipe diameters:** ø14,16,17,18, 20mm

**Packaging:** loose in bag → 200 pcs / multi pack 30 bags

**Pallet:** 720 bags each 200 pcs → 24 multi packs

**Pallet dimmension:** 1200x800x220mm ; gross weight 340 kg

15022

### TACKER CLIPS LOOSE PACKED IN BULK 50 MM



**Material** Polypropylene black

**Insertion depth** 30 mm

**Dedicated for pipe diameters:** ø14,16,17,18, 20mm

**Packaging:** loose in bag → 100 pcs / multi pack 60 bags

**Pallet:** 600 bags each 100 pcs → 24 multi packs

**Pallet dimmension:** 1200x800x220mm ; gross weight 355 kg

25022

TACKER CLIPS LOOSE PACKED IN BULK 50 MM DOUBLE HOOK



**Material** Polypropylene black

**Insertion depth** 30 mm

**Dedicated for pipe diameters:** ø14,16,17,18, 20mm

**Packaging:** loose in bag → 100 pcs / multi pack 60 bags

**Pallet:** 600 bags each 100 pcs → 24 multi packs

**Pallet dimmension:** 1200x800x220mm ; gross weight 355 kg

16022

TACKER CLIPS LOOSE PACKED IN BULK 60 MM



**Material** Polypropylene black

**Insertion depth** 40 mm

**Dedicated for pipe diameters:** ø14,16,17,18, 20mm

**Packaging:** loose in bag → 100 pcs / multi pack 60 bags

**Pallet:** 600 bags each 100 pcs → 24 multi packs

**Pallet dimmension:** 1200x800x220mm ; gross weight 375 kg



# UNDERFLOOR HEATING **SYSTEMS** **TOOLS**

104

## TACKER GUN



*Taker gun is a device used for mounting to the floor taped or welded clips in sizes 40-43-50-60 mm. It is an universal device, compatible with all types of clips available on the market, because it has the ability to easily adjust the appropriate position of the clips relative to the driving arm. Work with support of tacker gun gives the end user comfort and efficiency of work increase. The device is made of steel and aluminium, it is a solid and damage-resistant construction.*

**Dimensions:** length 900 mm width 200 mm; weight 3,2 kg

**Dedicated for pipe diameters** ø14,16,18, 20 mm

**Tacker clips / staples to be fixed with tacker gun – see SGI codes:**

14011, 14031, 14311, 14331, 15011, 15031, 25011, 25031, 16011, 16031

**Packaging** 1 piece/box / 80 pieces per pallet

**Pallet dimension:** 1200x800x150mm ; gross weight 275 kg

**Taker regulation** – see movie: <https://youtu.be/7m-B2MBkKG0>  
(or QR-code)



## PIPE DECOILER

*Pipe decoiler is used to unwind the pipe from the coil during the installation of the underfloor heating system. The device greatly facilitates the work of the installer, thanks to the placement of the pipe coil on the decoiler, the pipe does not get tangled and does not break. The following product versions are available:*

120

## PIPE DECOILER STANDARD

**Dedicated for pipe diameters** ø14,16,18,20mm

**Intended for pipe coils up to** 400 meters (ø 16 mm)

**Pipe roll dimensions:** minimum internal 300 mm –  
maximum external 900mm

**Decoiler weight** 13,50 kg

**Maximum pipe coil weight** 60 kg

**Dimensions when unfolded:** diameter 1200 - 1980mm;  
height 540-800mm

**Material** galvanized steel

**Packaging** single box 240x180x700 – 1 piece / pallet 40 pieces



### 120H

### PIPE DECOILER STANDARD VERSION HEAVY



**Dedicated for pipe diameters**  $\varnothing 14, 16, 18, 20\text{mm}$

**Intended for pipe coils up to** 600 meters ( $\varnothing 16\text{ mm}$ )

**Pipe roll dimensions:** minimum internal 300 mm – maximum external 900 mm

**Decoiler weight** 15,00 kg

**Maximum pipe coil weight** 80 kg

**Dimensions when unfolded:** diameter 1200 - 1980mm; height 540-800mm

**Material** galvanized steel

**Packaging** single box 240x180x700 – 1 piece / pallet 40 pieces

### 120K

### ARM FOR PIPE DECOILER WITH EYELET



*Enhance your decoiling process with our arm accessory for the SGI decoiler (codes 120 & 120H). It features a special eyelet to facilitate swift and easy pipe uncoiling, simultaneously pre-straightening the pipe for hassle-free installation and securing on floor systems.*

**Dimensions** height 370 mm; length 400mm; width 80mm

**Material** chrome steel

**Weight** 1,5 kg net

**Packaging** 1 piece per box / pallet 200 pieces

### 120HW

### PIPE DECOILER WITH ARM HEAVY



**Reinforced with internal arm allowing to unwind the pipe coil**

**Dedicated for pipe** diameters  $\varnothing 14, 16, 18, 20\text{mm}$

**Intended for pipe coils of up to** 600 meters ( $\varnothing 16\text{ mm}$ )

**Pipe roll dimensions:** minimum internal 300mm – maximum external 900mm

**Decoiler weight** 16,00 kg

**Maximum pipe coil weight** 80 kg

**Dimensions when unfolded:** diameter 1200 - 1980mm; height 540-800mm

**Material** galvanized steel

**Packaging** single box 240x180x700 – 1 piece / pallet 40 pieces

124

## PIPE DECOILER STANDARD VERSION HEAVY



**Dedicated for pipe** diameters  $\varnothing 14, 16, 18, 20 \text{ mm}$

**Intended for pipe coils of up** to 800 meters ( $\varnothing 16 \text{ mm}$ )

**Pipe roll dimensions:** minimum internal 300mm – maximum external 1000mm

**Decoiler** weight 25,00 kg

**Maximum pipe coil** weight 80 kg

**Dimensions:** high 118 cm x width 75 cm x depth 82 cm

**Material** galvanized steel

**Packaging** single box 240x180x700 – 1 piece / pallet 9 pieces

150

## PIPE STRAIGHTENER



**Designed for** PEX, PERT, PEX-AL-PEX pipes of diameter  $\varnothing 14, 16, 18, 20, 25 \text{ mm}$

**Bearing rollers provide appropriate precise pressure, thanks to which the pipe is well straightened along its entire length**

**Application on pipe decoiler** 120;120H → with an help of arm SGI code 120P

**Material** aluminium and chrome steel

**Dimensions** height 250mm, length 230mm width 60mm

**Weight** 4,00 kg net

**Packaging** 1 piece per box / pallet 100 pieces

120P

## ARM FOR PIPE STRAIGHTENER



*Designed for seamless integration with both standard and heavy SGI decoilers (codes 120 & 120H), this adapter arm allows for the attachment of a straightening machine (SGI code 150) directly to the unwinder. By mounting to the unwinder's arm with a foot, it significantly simplifies the process of uncoiling and straightening tubes, enhancing efficiency and ease of pipe installation.*

**Dimensions:** height 370 mm, length 400 mm, width 80 mm

**Material:** chrome-plated steel

**Weight** 1,0 kg net

**Packaging** 1 piece per box / pallet 200 pieces

160

#### PIPE DECOILER STANDARD VERSION HEAVY



**It is a 2in1 device**, designed for calibrating and simultaneous chamfering of the PEX, PERT, AL-PEX, AL-PERT pipes, before inserting the connector.

**It has a wide scope of:** 16x2 mm; 20x2mm; 25x2mm; 25x2.5mm; 26x3mm

**Flat design facilitates easy insertion into flattened pipes, efficiently ejecting cut material externally to prevent internal pipe contamination. Equipped with a comfortable, ergonomic plastic handle, it ensures a pleasant and efficient working experience.**

**Possible applications for pipes:** Comap, Herz, QIK, CosmoPEX, Rofix, KAN, Arka, PipeLife, Giacomini, Prandelli, Tweetop, Perfexim, Frankische, Goshe, US Metrix, Solter, IBP, Immergas, InstalComplex, Invena, Sanha, Skalar, Viessman and others

190

#### ARM FOR PIPE DECOILER WITH EYELET



**Shears are designed** for automatic cutting PE, PEX, PERT, AL-PEX, AL-PERT pipes up to 42 mm in diameter. The wedge-shaped blade ensures effortless cutting.

**Rigid and durable** plastic body.

**Retracting the blade by tilting** the handle allows one-handed operation

180 - 184

#### EXTERNAL BENDING SPRINGS FOR MULTILAYER PIPES



**Used to obtain** a smaller bending radius without bending and narrowing the pipe cross-section. Springs are made of wire with a square cross-section with specially rounded edges.

**Ensure that the shape is not reproduced on the** inner surface of the pipe. **Suitable** for bending multilayer pipes also of the PEX-AL-PEX type.

**Material** galvanized steel.

**Length** is 600mm.

SGI CODE	OUTHER DIAM.	WALL THICKNESS	PACKAGING/ BAG
180	16 mm	2 mm	5 pieces
181	20 mm	2 mm	2 pieces
182	20 mm	2,25 mm	2 pieces
183	25/26 mm	2,5/3 mm	2 pieces
184	32 mm	3 mm	2 pieces

185 - 189

## INTERNAL BENDING SPRINGS FOR MULTILAYER PIPES



**Used to obtain** a smaller bending radius without bending and narrowing the pipe cross-section. Springs are made of wire with a square cross-section with specially rounded edges.

**Ensure that the shape is not reproduced on the** inner surface of the pipe.

**Suitable** for bending multilayer pipes also of the PEX-AL-PEX type.

**Material** galvanized steel.

**length** is 600mm.

SGI CODE	OUTHER DIAM.	PACKAGING/ BAG
185	16 mm	10 pieces
186	20 mm	5 pieces
187	25 mm	5 pieces
188	26 mm	2 pieces
189	32 mm	1 pieces

1850C & 1950S

## DUCT TAPE



**1850C** – 50mt red standard version

**1950S** – 50mt grey strong version

**Material** polyester cotton fibres embedded in the tape

**Adhesion to steel** for angle 180 degrees 25 N/cal

**Elongation at break (extensibility)** 10%

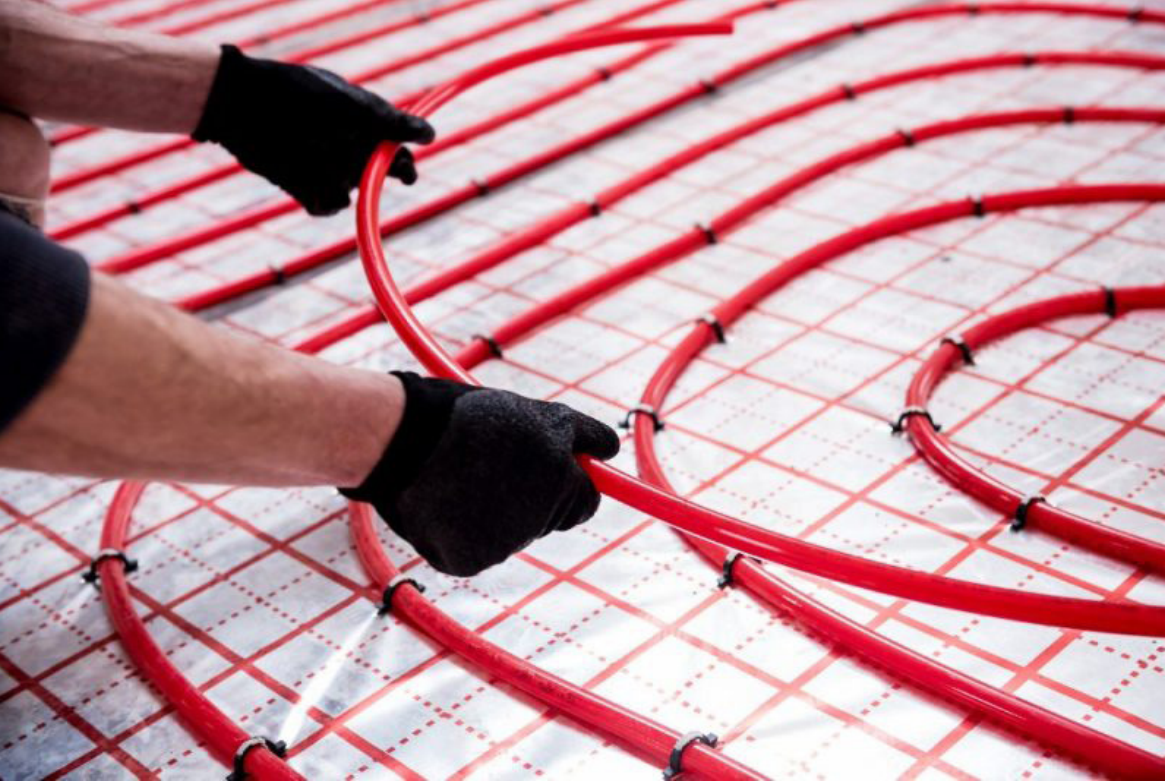
**Film thickness** PE 65 µm

**Total thickness** 110 µm

**Resistance** to temperature 60 degrees

**Type of glue** hot-melt



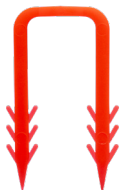


# MANUAL **CLIPS**

Manual Clips (codes 14811 & 16611) anchor RAIL systems or pipes directly to floors, with lengths of 48mm and 66mm to suit insulation thickness. Crafted from red polypropylene for easy visibility, they offer durability and ease of use. The cavalotto-type clip (code 1400) secures pipes on system boards, featuring a bridge design for enhanced pipe stability. Additionally, our ground-screw clips (code 1460) ensure firm pipe fixation to both insulation and floor, stabilizing the piping system efficiently.

14811

## MANUAL CLIPS 48MM



**Material** Polypropylene ; colour red

**Length** 48 mm → insertion depth 30 mm

**Dedicated** for pipe diameters ø14,16,18,20mm

**Fixing method** → manual pressure to the ground for mounting RAIL system (code 1300)

**Packaging:** single pack bag 100 pcs / multi pack 50 bags x 100 pcs

**Pallet:** 1200 bags / 24 multi packs x 50 bags

**Pallet dimension:** 1200x800x220mm ; gross weight 210 kg

16611

## MANUAL CLIPS 66MM



**Material** Polypropylene ; colour red

**Length** 66 mm → insertion depth 48 mm

**Dedicated** for pipe diameters ø14,16,18,20mm

**Fixing method** → manual pressure to the ground for mounting RAIL system (code 1300)

**Packaging:** single pack bag 200 pcs / multi pack 25 bags x 200 pcs

**Pallet:** 600 bags / 24 multi packs x 25 bags

**Pallet dimension:** 1200x800x220mm ; gross weight 245 kg

1400

## STRADDLE CLIP / CLIP CAVALLOTTO



**Material** Polypropylene ; colour black

**Length** 90 mm → insertion depth 48 mm

**Dedicated** for pipe diameters ø14,16,18,20mm

**Fixing method** → manual pressure of pipe to the ground to immobilize it

**Packaging:** single pack bag 100 pcs / multi pack 25 bags x 100 pcs

**Pallet:** 500 bags each 100 pcs → 24 multi packs

**Pallet dimension:** 1200x800x200mm ; gross weight 180 kg

1460

## CLIP SCREWED IN ISOLATION



**Material** Polypropylene ; colour red

**Length** 60 mm → insertion depth 27 mm

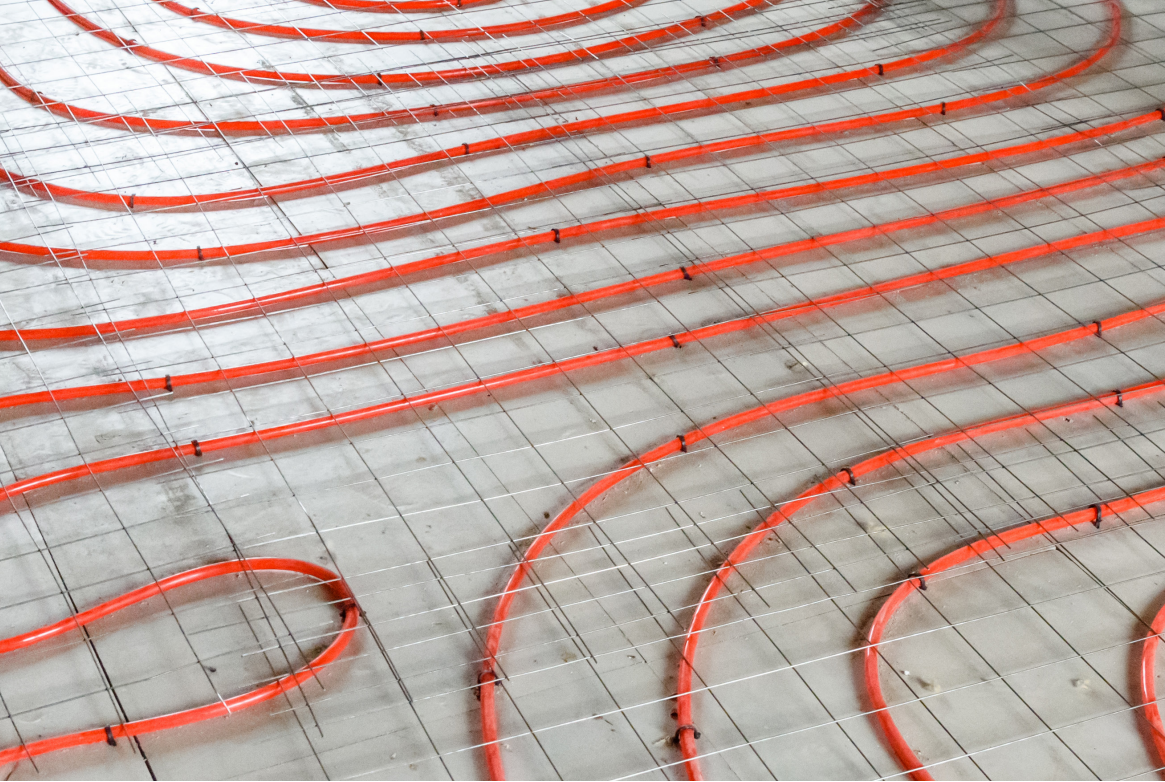
**Dedicated** for pipe diameters ø14,16,18,20mm

**Fixing method** → manual pressure of pipe to the ground to immobilize it

**Packaging:** single pack box 50 pcs / multi pack 20 x box 50 pcs

**Pallet:** 480 boxes each 50 pcs = > 24 multi packs

**Pallet dimension:** 1200x800x200mm ; gross weight 190 kg



# WIRE MESH **CLIPS**

Wire mesh clips are used to fix heating pipes directly on the reinforcing mesh surface. Clips fixation point to the mesh is done manually with a click or with a help of tacker gun -> see SGI code 105/106/107, just like connecting the pipe to the clip as well. Such a system guarantees a simple and quick installation of surface heating with a minimum of components. Clips are made of polypropylene, are adapted to the thickness of the mesh of 2-3mm. From available wire mesh clips there is a possibility of mounting pipes with a diameter of 16, 17 or 20mm.

116311

#### WIRE MESH CLIPS 16MM



**Material** Polypropylene; colour black

**Length** 35mm, width 6mm, height 24 mm

**Dedicated** for pipe diameters  $\varnothing$ 16 mm

**For reinforced mesh** of 2-3mm thickness

**Assembly method** → manual pressure of the clip to the mesh, then push the pipe into the inside of the clip with a click or with tacker gun

**Packaging:** single pack bag of 500 pieces (10x 50pcs taped together) / multi pack 10 bags

**Pallet:** 24 multi packs

**Pallet dimension:** 1200x800x180mm; gross weight 140 kg

117311

#### WIRE MESH CLIPS 17MM



**Material** Polypropylene; colour black

**Length** 35mm, width 6mm, height 24 mm

**Dedicated** for pipe diameters  $\varnothing$ 17 mm

**For reinforced mesh** of 2-3mm thickness

**Assembly method** → manual pressure of the clip to the mesh, then push the pipe into the inside of the clip with a click or with tacker gun

**Packaging:** single pack bag of 500 pieces (10x 50pcs taped together) / multi pack 10 bags

**Pallet:** 24 multi packs

**Pallet dimension:** 1200x800x180mm; gross weight 140 kg

120311

#### WIRE MESH CLIPS 20MM



**Material** Polypropylene; colour black

**Length** 35mm, width 6mm, height 24mm

**Dedicated** for pipe diameters  $\varnothing$ 20 mm

**For reinforced mesh** of 2-3mm thickness

**Assembly method** → manual pressure of the clip to the mesh, then push the pipe into the inside of the clip with a click or with tacker gun

**Packaging:** single pack bag of 500 pieces (10x 50pcs taped together) / multi pack 10 bags

**Pallet:** 24 multi packs

**Pallet dimension:** 1200x800x180mm; gross weight 160 kg



# RAILS FOR UNDERFLOOR HEATING

The RAIL floor heating is a universal product, widely used in floor and wall heating. It is made of a mixture of two materials from the polypropylene group, what ensures that it is flexible in the place where the pipes are set, and at the same time strong, resistant to breaking and crushing. Thanks to a special system of fastening one rail to another, they can be combined into long strings depending on the needs; which is a quick and convenient solution, especially for large areas. Rails can also be easily cut to smaller lengths. The minimum pipe spacing is 50mm; the maximum diameter of the pipes that can be installed on that system is 14-20 mm. There are available three types of rails, differentiated depending on the type of mounting to the ground. Rail mounted with manual clips (see code 14811; 14866); rail with self-adhesive tape glued directly to the ground and rail with a hook anchored to the ground.

1300

## RAIL FOR UNDERFLOOR HEATING



**Material** Polypropylene; colour black

**Length** 1000 mm/2000 mm (code 1302)

**Dedicated** for pipe diameters 14mm - to 20mm

**Spacing of pipes in the assembly (handle spacing)** min every 50mm

**Spacing of grooves** for easy shortening every 100mm

**Ground mounting method** → manual clip 14811; 16611, screws

**Packaging (1300):** single box of 100 pieces of 1mt / pallet: 26 boxes of 100 pieces = 2.600 meters

**Pallet dimension (1300):** 1200x800x180mm; gross weight 480 kg

**Packaging (1302):** single box of 25 pieces of 2mt / pallet: 50 boxes of 25 pieces x 2mt = 2.500 meters

**Pallet dimension (1302):** 1200x800x180mm; gross weight 480 kg

1350

## RAIL FOR UNDERFLOOR HEATING WITH HOOKS



**Material** Polypropylene; colour black

**Length** 1000 mm/2000 mm (code 1352)

**Dedicated** for pipe diameters 14mm - to 20mm

**Spacing of pipes in the assembly (handle spacing)** min every 50mm

**Spacing of grooves** for easy shortening every 100mm

**Ground mounting method** → manual clip 14811; 16611, screws

**Packaging (1350):** single box of 100 pieces of 1mt / pallet: 26 boxes of 100 pieces = 2.600 meters

**Pallet dimension (1350):** 1200x800x180mm; gross weight 480 kg

**Packaging (1352):** single box of 25 pieces of 2mt / pallet: 50 boxes of 25 pieces x 2mt = 2.500 meters

**Pallet dimension (1352):** 1200x800x180mm; gross weight 480 kg

1360

## RAIL FOR UNDERFLOOR HEATING



**Material** Polypropylene; colour black

**Length** 1000 mm/2000 mm (code 1360)

**Dedicated** for pipe diameters 14mm - to 20mm

**Spacing of pipes in the assembly (handle spacing)** min every 50mm

**Spacing of grooves** for easy shortening every 100mm

**Ground mounting method** → manual clip 14811; 16611, screws

**Packaging (1360):** single box of 50 pieces of 1mt / pallet: 26 boxes of 50 pieces = 2.600 meters

**Pallet dimension (1360):** 1200x800x180mm; gross weight 480 kg

**Packaging (1362):** single box of 25 pieces of 2mt / pallet: 50 boxes of 25 pieces x 2mt = 2.500 meters

**Pallet dimension (1362):** 1200x800x180mm; gross weight 480 kg



# FLOOR **HOOKS**

Floor hooks are designed for fixing pipes in water and underfloor heating systems. They are available in single or double product version as well as in two lengths options: 70mm and 100mm. This is a standard solution granting additional support and stabilization of pipes in underfloor heating system. Floor hooks are fixed to the floor made of concrete, brick, hollow blocks or cellular concrete. They are dedicated for installation inside buildings. Material from which they are made - polypropylene, ensures high resistance to breaking, crushing or cracking.

1420

### SINGLE FLOOR HOOK 70MM



**Material** Polypropylene; colour white

**Diameter** 10mm, high 70 mm

**Dedicated** for pipe diameters: ø14,16,17,18, 20, 22, 25mm

**Packaging:** single pack box 200 pcs / multi pack 12 x box 200 pcs

**Pallet:** 288 single boxes each 200 pcs → 24 multi packs

**Pallet dimension:** 1200x800x200mm

**Gross weight:** 450 kg

1430

### SINGLE FLOOR HOOK 100 MM



**Material** Polypropylene; colour white

**Diameter** 10mm, high 100 mm

**Dedicated** for pipe diameters: ø14,16,17,18, 20, 22, 25mm

**Packaging:** single pack box 200 pcs / multi pack 12 x box 200 pcs

**Pallet:** 288 single boxes each 200 pcs → 24 multi packs

**Pallet dimension:** 1200x800x200mm

**Gross weight:** 290 kg

1440

### DOUBLE FLOOR HOOK 70MM



**Material** Polypropylene; colour white

**Diameter** 10mm, high 70 mm

**Dedicated** for pipe diameters: ø14,16,17,18, 20, 22, 25mm

**Packaging:** single pack box 200 pcs / multi pack 12 x box 200 pcs

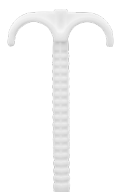
**Pallet:** 288 single boxes each 200 pcs → 24 multi packs

**Pallet dimension:** 1200x800x200mm

**Gross weight:** 300 kg

1450

### DOUBLE FLOOR HOOK 100MM



**Material** Polypropylene; colour white

**Diameter** 10mm, high 100 mm

**Dedicated** for pipe diameters: ø14,16,17,18, 20, 22, 25mm

**Packaging:** single pack box 200 pcs / multi pack 12 x box 200 pcs

**Pallet:** 288 single boxes each 200 pcs → 24 multi packs

**Pallet dimension:** 1200x800x200mm

**Gross weight:** 345 kg



# PIPE **BENDS**

Floor hooks are designed for fixing pipes in water and underfloor heating systems. They are available in single or double product version as well as in two lengths options: 70mm and 100mm. This is a standard solution granting additional support and stabilization of pipes in underfloor heating system. Floor hooks are fixed to the floor made of concrete, brick, hollow blocks or cellular concrete. They are dedicated for installation inside buildings. Material from which they are made - polypropylene, ensures high resistance to breaking, crushing or cracking.

1150

## PIPE BEND 10-12 MM



**Material** Polyamide + fiber glass; colour black

**For pipes** diameter 10-12 mm

**Length** 130mm width 22mm height 25mm

**Packaging:** single pack box 25 pcs / multi pack 20 x box 25 pcs

**Pallet:** 400 single boxes each 25 pcs → 20 multi packs

**Pallet dimension:** 1200x800x220mm

**Gross weight:** 290 kg

1100

## PIPE BEND 16-18 MM



**Material** Polyamide + fiber glass; colour black

**For pipes** diameter 16-18 mm

**Length** 160mm width 22mm height 25mm

**Packaging:** single pack box 25 pcs / multi pack 20 x box 25 pcs

**Pallet:** 400 single boxes each 25 pcs → 20 multi packs

**Pallet dimension:** 1200x800x220mm

**Gross weight:** 385 kg

1200

## PIPE BEND 20-22 MM



**Material** Polyamide + fiber glass; colour black

**For pipes** diameter 20-22 mm

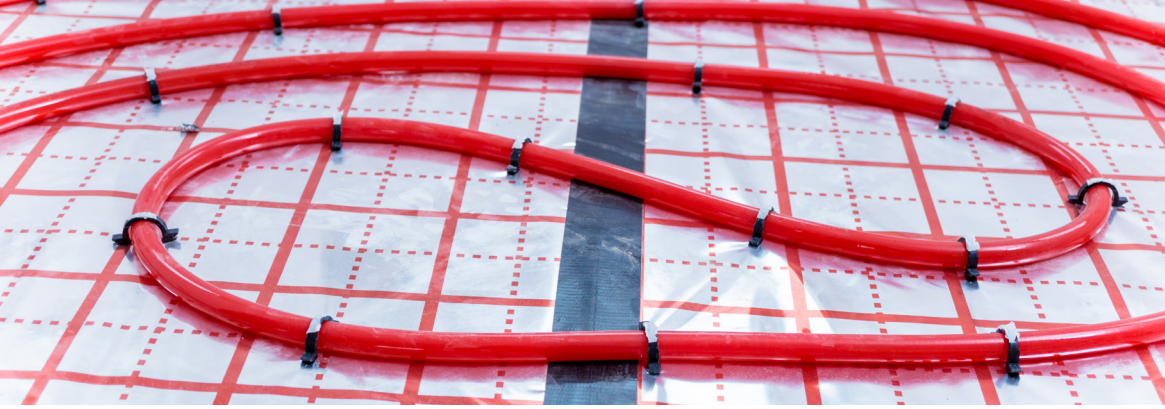
**Length** 150mm width 29mm height 30mm

**Packaging:** single pack box 25 pcs / multi pack 10 x box 25 pcs

**Pallet:** 200 single boxes each 25 pcs → 20 multi packs

**Pallet dimension:** 1200x800x220mm

**Gross weight:** 250 kg

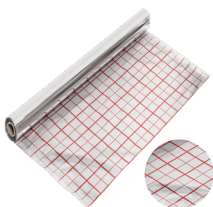


# FOILS AND TEXTILES FOR UNDERFLOOR HEATING

Polyethylene insulating foil is dedicated for use under the floor heating system elements. It increases the heating efficiency of the system it serves by high reflection of thermal radiation generated from the installation. It also accelerates response time of the entire heating system. Foil perfectly protects polystyrene plates against moisture. The film is waterproof, non-absorbent and durable, which makes it perfect for anhydrite screed. On its surface there is a mesh print in the form of 5 cm squares, which makes it very easy to lay an underfloor heating system on its surface. Polypropylene textile in underfloor heating systems acts as an excellent anti-moisture layer and is an alternative to the use of insulating foil. The textile, thanks to its construction, has a higher mechanical strength than foil. It is an ideal solution when it is necessary to anchor the fixing of pipes for underfloor heating in the insulation more firmly. Aluminium reflective foil is the multilayer film consisting of one layer of metalized polypropylene film, polypropylene mesh and polyethylene film. This type of foil is designed to perform vapor barrier in the construction of roofs. The metalized layer reflects thermal radiation, preventing heat loss. Product is insulating barrier to water vapor and the wind. Such membranes can be used in all ventilated and non-ventilated roofs.

1690

## POLYETHYLENE FOIL FOR UNDERFLOOR HEATING



**Length** 5m, width 1m, grammage 105q/m<sup>2</sup>

**Material** metalized polyethylene film

**Thickness** 90 µm

**Colour** silver with red grille 5x5cm

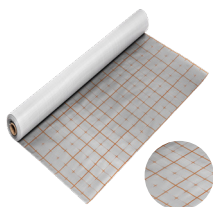
**Packaging:** roll 50mt / pallet 110 rolls

**Pallet dimension:** 1200x800x180mm

**Gross weight** 455 kg

1600

## POLYPROPYLENE TEXTILE FOR UNDERFLOOR HEATING



**Length** 5m, width 1m, grammage 100q/m<sup>2</sup>

**Material** material polypropylene fibres

**Thickness** 100 µm

**Colour** silver with red grille 5x5cm

**Packaging:** roll 50mt / pallet 110 rolls

**Pallet dimension:** 1200x800x180mm

**Gross weight** 565 kg

269030

## ALUMINIUM REFLECTIVE FOIL 90 CE 30M2



**Length** 20m, width 1,5m, grammage 90q/m<sup>2</sup>

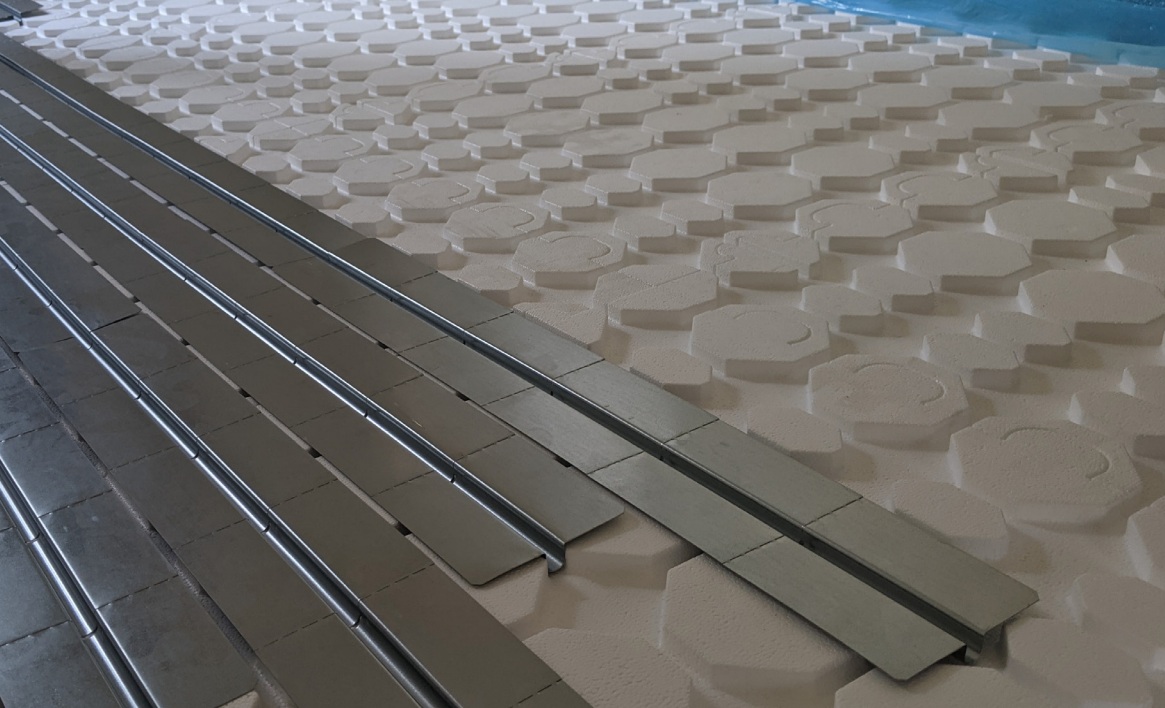
**Material** metallised vapour barrier membrane

**Thickness** 100 µm

**Colour** multilayer film consisting of one layer of metalized polypropylene film, polypropylene mesh and polyethylene film; colour silver **Packaging:** roll 50mt / pallet 110 rolls

**Pallet dimension:** 1200x800x180mm

**Gross weight** 660 kg



# HEAT TRANSFER - **ALUMINUM PLATES**

Alu Plate heating panels are used in the installation of underfloor heating system in the so-called dry technology, means that no screed is required at system preparation and installation. Aluminium panels are laid directly on the insulation made of: EPS boards, acoustic boards or chipboards. Boards have special channels for mounting a pipe with a diameter range of 16-20 mm. Heat coming from pipe is speeded over the entire heating aluminium panel, thanks to which the speed and efficiency of the heated floor increase fast and significantly. Alu plates are available in one- and two-channel versions and in many variants of their width and length.

2202

## HEAT TRANSFER ALU PLATE SINGLE



**Dimensions:** length 1000mm; width 120mm; thickness 0.5mm

**Dedicated for pipe diameter:** 16mm

**Material:** Aluminium

**Packaging:** single box 70 pcs/box → 20 boxes on a pallet = 1400 pcs

**Pallet dimension:** 1200x800x200mm

**Gross weight** 290 kg

2212

## HEAT TRANSFER ALU PLATE DOUBLE



**Dimensions:** length 1000mm; width 390mm; thickness 0.5mm

**Dedicated for pipe diameter:** 16mm; pipe distance 200mm

**Material:** Aluminium

**Packaging:** single box 20 pcs/box → 20 boxes on a pallet = 400 pcs

**Pallet dimension:** 1200x800x200mm

**Gross weight** 360 kg



# PIPE CONDUIT

Our pipe conduit shields underfloor heating pipes, offering mechanical protection against damage from material expansion and shrinkage. Ideal for sleeving pipes across expansion joints, or at entry/exit points through screed, it boasts high flexibility and resistance to chemicals and external pressures. Easy to install, it comes in 21 and 23mm outer diameters, in 50m coils, available in blue and red.

1721N (blue)  
1721C (red)

PIPE CONDUIT 21 MM

**Length of coil** 50mt; **Outer diameter** 21mm; **Material** polypropylene

**Packaging** – 36 rolls / pallet

1723N (blue)  
1723C (red)

PIPE CONDUIT 23 MM

**Length of coil** 50mt; **Outer diameter** 23mm; **Material** polypropylene

**Packaging** – 36 rolls / pallet



# EDGE STRIPS

Crafted from LDPE polyethylene, our edge insulation strips are designed for creating wall/floor separations or expansion joints in large screed areas, enhancing thermal and acoustic insulation. Available in multiple configurations to suit project-specific needs — with or without collar (overlap) and adhesive options. Offered in 25 or 50m rolls, in blue or yellow, with standard dimensions of 150mm width and 8mm thickness. Custom dimensions available upon request.

SGI CODE	EDGE STRIP SIZE MM	LENGHT PER ROLL METERS	COLOUR	OVERLAP	ADHE-SIVE ON EDGE STRIP	DOUBLE ADHESIVE (ON OVERLAP & EDGE STRIP)
2410Z	8x150	25	yellow			
2410N	8x150	25	blue			
2450Z	8x150	50	yellow			
2450N	8x150	50	blue			
2400Z	8x150	25	yellow	X		
2400N	8x150	25	blue	X		
2440Z	8x150	50	yellow	X		
2440N	8x150	50	blue	X		
2425ZT	8x150	25	yellow	X	X	
2425NT	8x150	25	blue	X	X	
2450ZT	8x150	50	yellow	X	X	
2450NT	8x150	50	blue	X	X	
2425ZT2K	8x150	25	yellow	X	X	X
2425NT2K	8x150	25	blue	X	X	X
2450ZT2K	8x150	50	yellow	X	X	X
2450NT2K	8x150	50	blue	X	X	X



# GYPSUM FIBER PANELS - PWG

Our GYPSUM fiber panels offer a modern alternative to traditional cement screed, ensuring minimal heating system thickness and low weight, akin to concrete's functionality. These panels efficiently absorb and distribute heat from underfloor pipes across their surface, also storing it effectively. Ideal for moist areas like bathrooms and kitchens, these eco-friendly, recyclable materials allow direct floor finishing without underlays. Their installation is quick, clean, and immediate, eliminating drying time unlike screed. Suitable for 10-12 mm pipe diameters, each panel weighs approximately 20kg/m<sup>2</sup>.

## SUPPLY GYPSUM FIBER PANEL



SGI CODE	NAME	LENGHT MM	WIDTH MM	THICKNESS MM	PIPE DISTANCE MM	WEIGHT KG
PWG01	supply panel	1200	600	18	100	15
PWG02	supply panel	1200	600	18	150	15

## SUPPLY & RETURN PANEL



SGI CODE	NAME	LENGHT MM	WIDTH MM	THICKNESS MM	PIPE DISTANCE MM	WEIGHT KG
PWG03	supply & return panel	1200	600	18	100	15
PWG04	supply & return panel	1200	600	18	150	15

## RETURN PANEL



SGI CODE	NAME	LENGHT MM	WIDTH MM	THICKNESS MM	PIPE DISTANCE MM	WEIGHT KG
PWG05	return panel	1200	600	18	100	15
PWG06	return panel	1200	600	18	150	15



# WOOD FIBER PANELS - ETFP

Optimized for „dry“ construction methods, our Wood Fiber Panels provide a robust foundation for underfloor heating pipes where wet systems aren't feasible, like over wooden floors or in lightweight construction. These panels not only offer superior thermal and acoustic insulation with minimal height increase but also enhance the floor's thermal inertia by accumulating heat — a significant advantage over polystyrene solutions. Their quick, hassle-free installation process makes them ideal for 16mm diameter pipes, ensuring an efficient and effective heating system setup.

## SUPPLY PANELS



SGI CODE	NAME	LENGHT MM	WIDTH MM	THICKNESS MM	PIPE DISTANCE MM	WEIGHT KG
ETFP01125	supply panel	1000	500	30	125	5,5
ETFP01150	supply panel	1200	600	30	150	5,5
ETFP01200	supply panel	1200	600	30	200	5,5

## SUPPLY-RETURN PANELS



SGI CODE	NAME	LENGHT MM	WIDTH MM	THICKNESS MM	PIPE DISTANCE MM	WEIGHT KG
ETFP02125	supply-return panel	1000	500	30	125	5,5
ETFP02150	supply-return panel	1200	600	30	150	5,5
ETFP02200	supply panel	1200	600	30	200	5,5

## RETURN PANEL



SGI CODE	NAME	LENGHT MM	WIDTH MM	THICKNESS MM	PIPE DISTANCE MM	WEIGHT KG
ETFP03125	return panel	1000	500	30	125	5,5
ETFP03150	return panel	1200	600	30	150	5,5
ETFP03200	return panel	1200	600	30	200	5,5

## BLIND PANEL



SGI CODE	NAME	LENGHT MM	WIDTH MM	THICKNESS MM	PIPE DISTANCE MM	WEIGHT KG
ETFP07	blind panel	1000	500	30	-	5,5
ETFP08	blind panel	1200	600	30	-	5,5



# CHIPBOARD PANELS

## - MFP

Our eco-friendly Chipboard Panels are crafted from solid, wood-like materials, ideal for timber frame construction and renovations. Designed for easy laying over joists spaced at 400 or 600mm, these panels support aluminum channels on top for underfloor heating pipes, ensuring even heat distribution across the floor. The dry system benefits from a slim profile with panels just 22mm thick, compatible with 16mm diameter pipes, combining efficiency with minimal structural impact.

## SUPPLY PANELS



SGI CODE	NAME	LENGHT MM	WIDTH MM	THICKNESS MM	PIPE DISTANCE MM	WEIGHT KG
MFP01	supply panel	1200	600	22	125	11,0
MFP03	supply panel	1200	600	22	150	11,0
MFP05	supply panel	1200	600	22	200	11,0

## SUPPLY-RETURN PANELS



SGI CODE	NAME	LENGHT MM	WIDTH MM	THICKNESS MM	PIPE DISTANCE MM	WEIGHT KG
MFP02	supply-return panel	1000	600	22	125	11,0
MFP04	supply-return panel	1200	600	22	150	11,0
MFP06	supply panel	1200	600	22	200	11,0



# MANIFOLD CABINETS

Integral to underfloor heating systems, our Manifold Cabinets encapsulate and conceal manifolds and pump sets within walls elegantly and functionally. These cabinets, crafted from white-painted, galvanized steel, ensure that installations remain accessible yet discreet. Available in two variants for either over or under plaster assembly, they provide a sleek, aesthetic finish while safeguarding the system components.

15001-15007

## MANIFOLD CABINETS UNDER PLASTER



**It is used to be mounted** inside in a wall

**Material** galvanized steel sheet

**Colour** white

**The rear wall is equipped with rails and screws** dedicated for mounting the manifold

**The side walls have openings for** heating supply and return pipes

**Cabinets feet ensure** easy installation to the floor

**Adjustable door is** closed with a coin system

SGI CODE	CIRCUITS	WIDTH	HEIGHT	DEPTH	WEIGHT KG
15001	2-4	350	505-605	110-160	7,9
15002	5-6	450	505-605	110-160	8,2
15003	7-8	530	505-605	110-160	9,3
15004	9-10	680	505-605	110-160	10,6
15005	11-13	830	505-605	110-160	13,1
15006	14-16	1030	505-605	110-160	15,4
15007	17-18	1130	505-605	110-160	16,4

**POSSIBILITY OF PRODUCTION MANIFOLD CABINETS FOR SPECIAL CUSTOMER DIMENSIONS !**

15501-15507

## MANIFOLD CABINETS UNDER PLASTER



**It is used to be mounted** to the wall

**Material** galvanized steel sheet

**Colour** white

**The rear wall is equipped with rails and screws** dedicated for mounting the manifold

**Adjustable door is** closed with a coin system

SGI CODE	CIRCUITS	WIDTH	HEIGHT	DEPTH	WEIGHT KG
15501	2-4	350	600	120	6,3
15502	5-6	450	600	120	7,0
15503	7-8	530	600	120	7,9
15504	9-10	680	600	120	9,7
15505	11-13	830	600	120	11,3
15506	14-16	1030	600	120	13,5
15507	17-18	1130	600	120	14,5

**POSSIBILITY OF PRODUCTION MANIFOLD CABINETS FOR SPECIAL CUSTOMER DIMENSIONS !**

1490

#### GUTTER CLIPS



*Designed for anti-icing system installations, our Gutter Clips securely hold heating cables in downspouts, featuring a hole for fastening to stainless steel wires up to 2mm in diameter. Made from weather-resistant materials, they guarantee stable cable placement in gutters. Beyond utility, these clips are also ideal for hanging festive lights or decorations, offering a versatile solution for both protection against ice and seasonal adornment.*

**Material** Polypropylene black

**Packaging** single pack bag 10 pieces / multipack 100 bags each 10 pieces

1491

#### SWIVEL FEET



*Expertly crafted for optimal balance, our Swivel Feet deliver unmatched stability for machinery and tools. Utilizing premium materials for maximum durability and atmospheric resistance, the shaft is made of stainless steel with an M8 thread screw. The base, constructed from top-grade technopolymer, measures 80mm in diameter, ensuring broad application suitability and ease of installation. Ideal for both industrial and domestic settings, these swivel feet are designed to provide a solid, reliable base with minimal installation time.*

**Material** Polyamide + fiber glass & stainless steel, colour black

**Packaging** single pack bag 10 pieces / multipack 100 bags each 10 pieces



underfloor heating components



**SGI Heating Sp. z o.o.**  
**ul. Sierocińska 10**  
**59-220 Legnica**  
**NIP 691-257-35-56**

**mobile +48 517 920 327**  
**[www.sgiheating.pl](http://www.sgiheating.pl)**  
**[info@sgiheating.pl](mailto:info@sgiheating.pl)**