

CSBP | High Efficiency & Energy Saving Low Noise <50dB

Operating Limits:

- Ambient temperature: 40°C
- Liquid temperature < 75°C
- Protection: IPX5
- Insulation: Class F

Materials:

- Pump body: 304 stainless steel
- Impeller: Plastic / 304 stainless steel
- Motor shaft: 304 stainless steel
- Mechanical seal: Graphite/Silicon Carbide

Applications:

Multi-function water supply system, it applies to apartment, villa, water and pipeline boosting, garden irrigation, floor heating, pipeline heating and hot-water circulation.

Features:

- Low noise 50db(A) in typical use
- Up to 95 l/min, head up to 63m
- Adjustable LCD display with 1l built-in expansion vessel, and check valve
- Water pressure: intelligent pump control adjusts operation automatically
- Easy selection: one pump for all domestic boosting needs
- Easy installation: compact, all-in-one solution, plug-and-pump
- Easy to operate: user-friendly control panel



permanent magnet
frequency conversion



energy saving and
environmental protection



intelligent operation

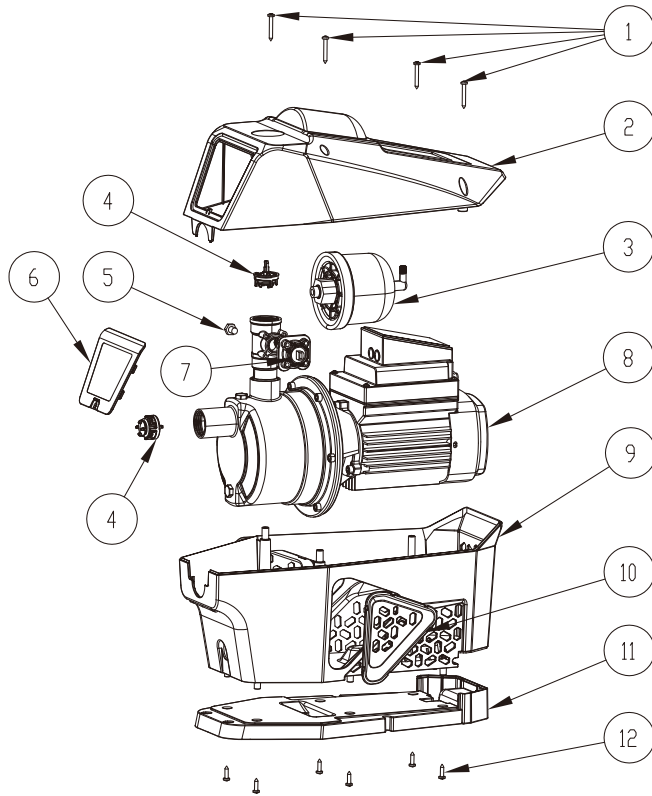


low noise



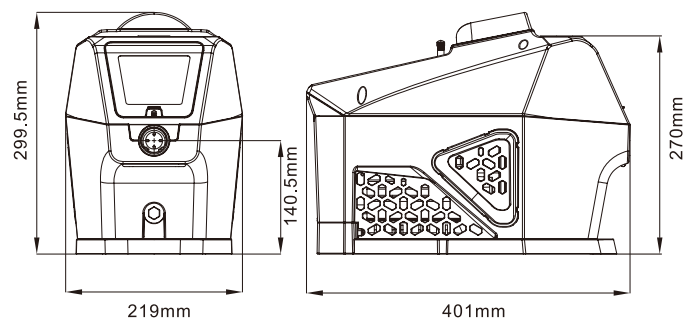
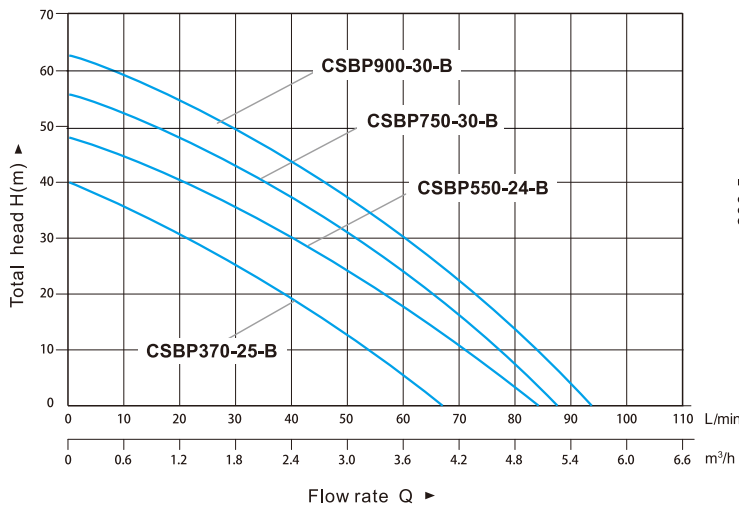
multiple protection

Structure Drawing :



1.	Self-tapping screw
2.	Upper shell
3.	Pressure vessel
4.	Check valve
5.	Temperature sensor
6.	Flip-top
7.	Pressure sensor
8.	Pump with PM motor
9.	Lower shell
10.	Side cover
11.	Base
12.	Self-tapping screw

PERFORMANCE CHART AT DIFFERENT MODEL



MODEL		POWER (P1)		INLET/OUTLET DIAMETER	VOLTAGE FREQUENCY (V/Hz)	MAX. HEAD (m)	MAX. FLOW (m³/h)	RATED HEAD (m)	RATED FLOW RATE (m³/h)	MAX. SUCT (m)
		KW	HP							
CSBP370-25-B	Silent Self-priming	0.37	0.5	1" x 1"	160~260V 50/60Hz	40	4	25	1.8	8
CSBP550-24-B		0.55	0.75			48	5	24	3	8
CSBP750-30-B		0.75	1			56	5.2	30	3	8
CSBP900-30-B		0.9	1.2			63	5.6	30	3.6	8