

# ISOPIPE®

Integrated Insulation Systems



Product Range



THE INTERNATIONAL EPD® SYSTEM

EN ISO 14001:2015



Continuous Tested

# ISOPIPE® TC

## Long-term and High Thermal Efficiency

ISOPIPE TC - is an **NBR** based flexible elastomeric foam insulation with significantly high percentage, **98.5%, of closed - cells.**

**EPD®**  
THE INTERNATIONAL EPD® SYSTEM

**+110**  
= °C  
**-50**



### Benefits



**More than 80% in energy savings**, due to the reduction of heat losses, thanks to the low thermal conductivity,  
 $\lambda = 0,031\text{W/mK}$  at  $-20^\circ\text{C}$   
 $\lambda = 0,033\text{W/mK}$  at  $0^\circ\text{C}$   
 $\lambda = 0,0350\text{W/mK}$  at  $+20^\circ\text{C}$   
 $\lambda = 0,036\text{W/mK}$  at  $+30^\circ\text{C}$



**B-s2, d0 fire classification, according to the EN 13501-1:2007 + A1:2009**, i.e. it does not produce flaming particles and does not allow the spread of fire



Minimum permeability ensuring long-term effectiveness,  $\mu \geq 10.000$



Maximum performance, homogeneity and perfect application thanks to the high-level quality control



**Excellent thermal performance, insulating properties** and protection from creating condensations due to the high percentage, **98.5% of closed cells, with a density of  $60\text{ kg/m}^3$ ,  $\pm 10\text{ kg/m}^3$**



It contributes to the ozone protection, as it is **free of chlorofluorocarbons, CFC, HFC & HCFC**



**Certified** for its Antimicrobial and Antifungal Protection according to the ASTM E2180 and ASTM G21 certifications



Safety and health for both the humanity and the environment, in accordance with **EPD EN 15804 & ISO 14025**



**Short lead time** due to ISOPIPE's high flexibility production methods



### A wide range of Applications



### Product Range



For more information,  
please visit our website  
by scanning the **QR Code**



# ISOPIPE® HT-HF

## Ecological, Halogen-free Solution for Higher Temperatures

ISOPIPE HT-HF is an **EPDM** based, halogen free, closed cell synthetic rubber elastomeric foam for temperatures up to  **$+150^\circ\text{C}$** .



**+150**  
= °C  
**-50**



### Benefits



**Maximum performance in high temperatures, up to  $+150^\circ\text{C}$ , without causing any damage to the insulation material**



**Halogen free** according to the DIN VDE 0472 - section 815



**More than 80% in energy savings**, due to reduction of heat losses, thanks to the low thermal conductivity,  
 $\lambda = 0,040\text{W/mK}$  at  $0^\circ\text{C}$   
 $\lambda = 0,045\text{W/mK}$  at  $+40^\circ\text{C}$



Compliance with fire protection international requirements, with **Class E** fire classification, according to **EN 13501-1:2007 + A1:2009**



Minimum permeability ensuring long-term effectiveness,  $\mu \geq 4.000$



Maximum performance, homogeneity and perfect application thanks to the high-level quality control



**Optimum density of  $70\text{ kg/m}^3$ ,  $\pm 10\text{ kg/m}^3$**



It contributes to the ozone protection, as it is **free of chlorofluorocarbons, CFC, HFC & HCFC**



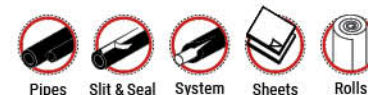
Safety and health for both humanity and the environment



### A wide range of Applications



### Product Range



For more information,  
please visit our website  
by scanning the **QR Code**





# ISOPIPE<sup>®</sup> TC

## SOLAR

### Optimal Choice for Exterior Use

**SOLAR COVERING** is a special polymer external protection membrane, offering high resistance to ultra violet radiation and other atmospheric agents.

Available in Silver, Black & White Colour.

Also available in **ISOPIPE TC SOLAR TWIN**, a new design offering fast, easy and trouble free installation!

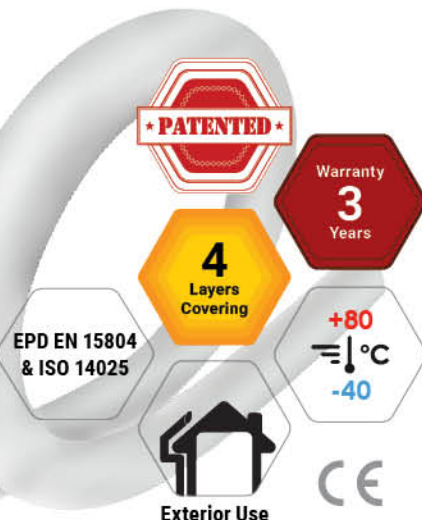
The tubes connection through a special protective film, allows easy separation at the desired length.

# ISOPIPE<sup>®</sup> TC

## SOLAR SG

Also, available with Corrugated External Protection

**EPD<sup>®</sup>**  
THE INTERNATIONAL EPD<sup>®</sup> SYSTEM



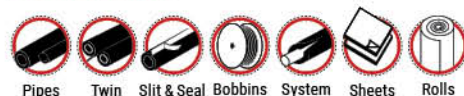
#### Benefits

- Protection against harsh weather and UV radiation
- Protective film with high temperature resistance, in environmental conditions up to +80°C
- No need to tape, paint or cover and easily cleaned with a standard cloth
- Attractive appearance & professional result
- Good flexibility, ease of installation

#### A wide range of Applications



#### Product Range



**SOLAR**



**SOLAR SG**



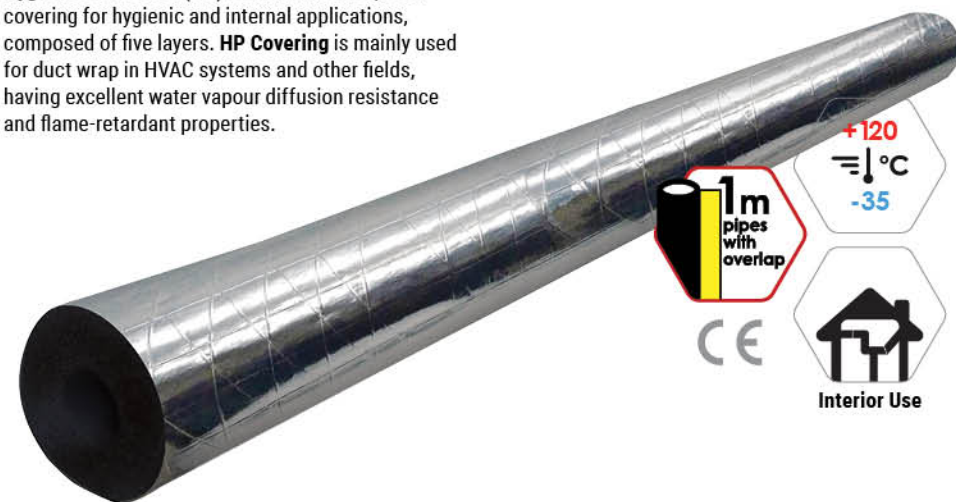
For more information,  
please visit our website  
by scanning the QR Code

# ISOPIPE<sup>®</sup> TC

## HP

### Hygienic Protection Covering Ideal for Internal Use

**Hygienic Protection (HP)** is an aluminum special covering for hygienic and internal applications, composed of five layers. **HP Covering** is mainly used for duct wrap in HVAC systems and other fields, having excellent water vapour diffusion resistance and flame-retardant properties.



Thickness: 60 µm

Weight: 154 g/m<sup>2</sup>

#### Benefits

- High resistance to mechanical stress
- Flame will not spread through its protection
- Fast and easy installation
- No need to tape, paint or cover
- Easy to clean and maintain. It can be cleaned with a standard cloth
- Perfect for replacing damaged rockwool insulation
- Great aging and corrosion resistance

#### A wide range of Applications



#### Product Range



For more information,  
please visit our website  
by scanning the QR Code



# ISOPIPE® TC

## HEAVY DUTY

### Superior Aluminum Protection with High Fire Resistance

**HEAVY DUTY (HD) COVERING** is a superior reinforced external aluminum protection covering, offering high resistance against mechanical damage, ultra violet radiation, leakages and pipe corrosion. The **HEAVY DUTY COVERING** consists of three layers of Polyester, Aluminum and Fire Resistant (FR) PVC.



Thickness: 230 µm

Weight: 340 g/m<sup>2</sup>

#### Benefits

- Excellent long term UV protection
- Greatly reduces the risk of under insulation corrosion
- **Certified fire resistance Class 0 according to BS 476**
- Excellent water vapour barrier
- Great protection against scratches and mechanical stress
- Wide range of accessories for perfect overall result in all installations
- Perfect for replacing most metal jacketing systems, including Aluminium and stainless steel

#### A wide range of Applications



#### Product Range



For more information,  
please visit our website  
by scanning the QR Code

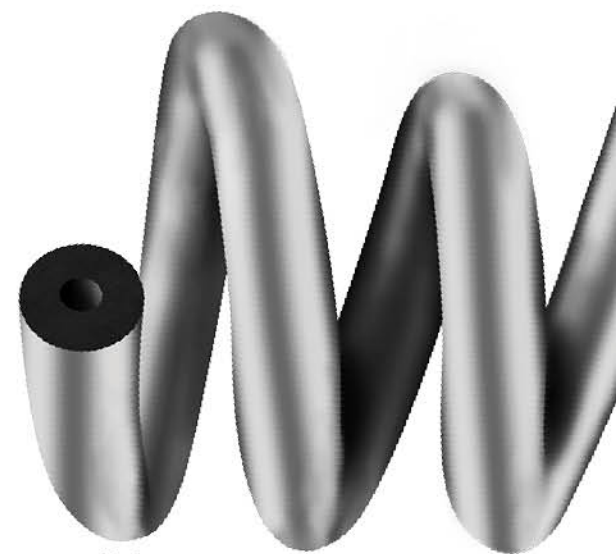


# ISOPIPE® TC

## UV PLUS

### Aluminum Protection Covering with High Reflective Properties

**UV PLUS COVERING** is an aluminum external protection covering composed of three layers: polyester, aluminum and polyethylene, providing high resistance both against ultra violet radiation and other atmospheric agents.



Thickness: 99 µm

Weight: 125 g/m<sup>2</sup>

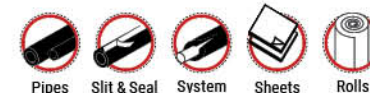
#### Benefits

- High UV protection with reflective properties
- The external covering reduces the risk of under insulation corrosion
- Ideal for fast and easy installation
- No need to tape, paint or cover
- Easy to clean and maintain. It can be cleaned with a standard cloth
- Great metallic appearance and high permeability protection

#### A wide range of Applications



#### Product Range



For more information,  
please visit our website  
by scanning the QR Code





# ISOCOIL® TC

## Insulation delivered in continuous length

ISOCOIL - is a NBR based flexible elastomeric foam insulation, in the form of coil, in a **continuous length** up to **76 meters**.

ISOCOIL is NOW available in **15 meters** length



### Benefits

- **No scrap produced:** Cut only the material needed and store the rest
- **Less glue applied:** No need to cut and join short pieces
- **Less labour time** consumed due to easier installation process
- **More conveniently carried**, due to the lightweight package
- **Multifunctional reclosable package**, containing measure and perforated pipe edge abutment

### Applications

- It addresses the need for economical and effective insulation for internal applications
- It is ideal for pipe systems operating in:
  - Dual-temperature systems (hot or cold pipelines)
  - Air Conditioning
  - Refrigeration
  - Central Heating and Plumbing

For more information,  
please visit our website  
by scanning the QR Code

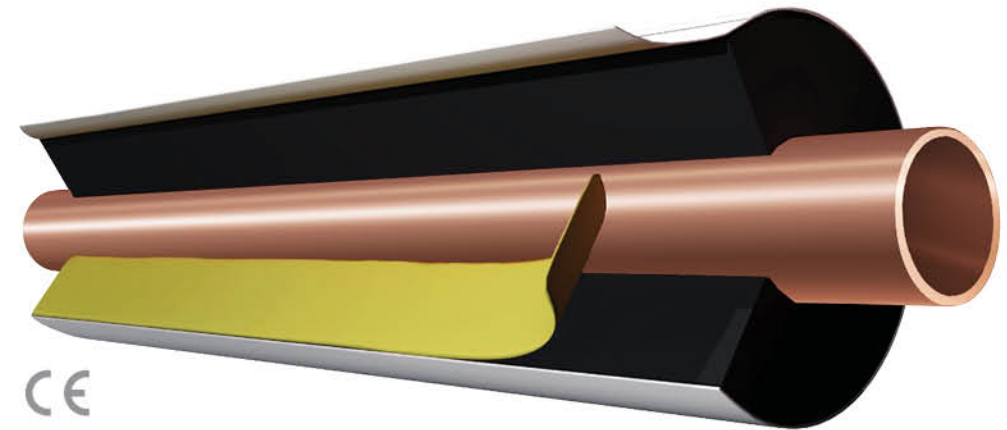


# ISOPIPE® TC

## SLIT & SEAL

## Pre-slitted Insulation for already existing Installations

Synthetic rubber insulation, lengthwise pre-slitted with self-adhesive tape and self-adhesive overlap.



### Benefits

- **ISOPIPE TC Slit & Seal** has a **secure double bonding** along the slit's length, with strong inner self-adhesive mesh tape and self-adhesive overlapping tape
- **ISOPIPE TC Slit & Seal** **reduces** significantly **application and installation time and costs**
- It has an **attractive** appearance and **professional finish**
- **No additional equipment** needed for its application

### Applications

- All Heating and Cooling pipe systems, where thermal insulation is required
- **Already existing pipe systems**, where insulation cannot be threaded and must be slit and clamped around existing pipes

For more information,  
please visit our website  
by scanning the QR Code





## The Modern Solution towards Time and Money Savings

The high quality and wide range of our bare pipes in combination with ISOPIPE S.A.'s expertise in closed-cell synthetic rubber elastomeric foam, offer an ergonomic and highly functional product, **ISOSOL Pre - Insulated Pipes**.

Available with **ISOPIPE TC (+110°C)** or **ISOPIPE HT-HF (+150°C)** Insulation and our **SOLAR protective Covering in White Colour**.



### Benefits

- Lightweight, resistant and flexible
- Meets all the standards for sustainable construction
- It helps in saving time to every professional during installation, making it easier, as there is no need to measure, cut, join and glue
- **Offers high protection** against UV radiation
- **Includes an integrated temperature sensor cable**, protected from inner pipe temperature and external UV radiation

### A wide range of Applications



### Product Range



For more information, please visit our website by scanning the **QR Code**



## TWIN

## New design offering quick and easy installation

The tubes connection is performed with a special protective film, thus allowing easy separation at the desired length.

**ISOSOL TWIN** is also available with a pre-installed temperature sensor cable, placed between the insulation and the protective **SOLAR Covering** for better and longer lasting performance.

Available with **ISOPIPE TC (+110°C)** or **ISOPIPE HT-HF (+150°C)** Insulation and our **SOLAR protective Covering in Black Colour**.



ENERGY SAVING  
over  
**80%**

**CE** Covers European and International Regulations

### Benefits

- Excellent insulating properties and outstanding thermal performance as guaranteed by ISOPIPE
- Great time saving and cost reduction
- Better aesthetic result of the installation
- Availability of all additional accessories required for the installation
- High quality INOX 316L pipes
- Easy separation of pipes
- Great flexibility, ease of installation
- Short lead time

### A wide range of Applications



### Product Range



For more information, please visit our website by scanning the **QR Code**





# ISOROLLS

## Excellent Flexibility & Strong Adhesive Capacity

**ISOROLLS:** an excellent solution for insulating large objects like ducts & large bore pipes, due to its high elasticity & flexibility. Professionals can install the product quickly and give it the desired shape by eliminating undesirable gaps.

**ISOROLLS** are available with or without self-adhesive.

### ISODUCT

Insulation Roll in **1.5m width**, with or without self-adhesive, perfect for duct work panels. Protects air supply ducts from condensation and heat losses.



#### Benefits

- Easily applicable around large objects
- Excellent flexibility
- Available with self-adhesive with great tack and peel adhesion, for long lasting performance
- No need for glue, when ISOROLLS with self-adhesive are used

#### Applications

- **All Heating and Cooling pipe systems**, where thermal insulation is required
- Large objects like ducts, large bore pipes, boilers

For more information,  
please visit our website  
by scanning the QR Code



# ISOSYSTEM®

## Covers Large Pipes of any diameter

**Innovation!** A custom - width sheet to accurately cover **large pipes** of any diameter, **cut in angle** to ensure a proper fit and better edge bonding.



Engineered angle-cut ends ensure proper fit and firm application. Easier to close firmly large and thick sheets.



#### Benefits

- Significant time saving due to measured pre-cut sheets. No need to calculate, measure or cut sheets
- Eliminates material waste, which is common when single-sized sheets or rolls are used
- Perfect-fit application due to engineered angle-cut endings. This assures parallel to the pipe bonding and larger adhesive surface
- Innovative, attractive and professional appearance
- Easy to handle, transport and store due to the 1 meter packaged and easy to carry carton
- Available in thickness of: 13, 19, 25, 32, 40 mm and pipe diameter from 88 mm up to our client needs, after consulting our technical department
- Available in: **ISOSYSTEM TC, ISOSYSTEM HT-HF, ISOSYSTEM COVERINGS: SOLAR and UV PLUS**

#### Applications

- **Large diameter** pipe insulation
- All Heating and Cooling pipe systems, where thermal insulation is required

For more information,  
please visit our website  
by scanning the QR Code



# ISOSOUND®

## Sound Absorption and High Performance Acoustic Insulation

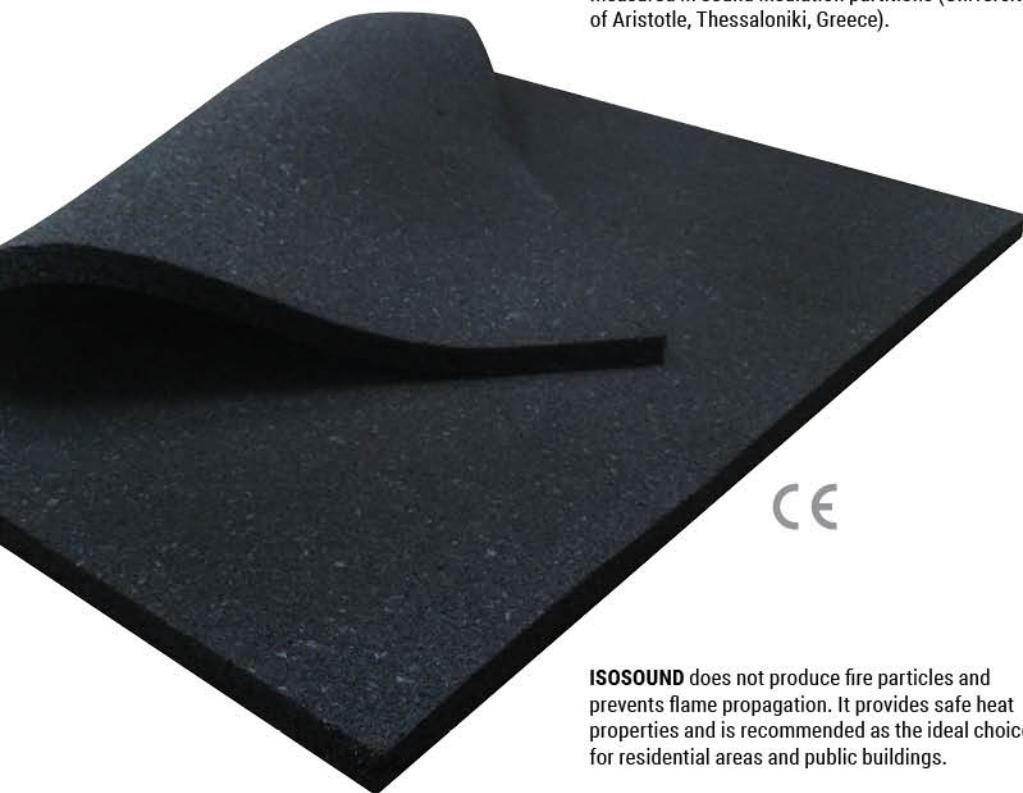
**ISOSOUND** is a new sound absorption and sound insulation product of high performance, specially designed to meet the most demanding requirements for sound isolation.

The material is composed of open - cell flexible elastomeric foam based on synthetic rubber.

It offers very high acoustic energy absorption (absorption coefficient up to 0.98) and promises noise control and a healthier soundspace.

**ISOSOUND** has equally very good sound insulation properties with weighted sound reduction index:

**Rw(C;Ctr) of 40(-2;-7) dB at 150 kg/m<sup>3</sup> density and Rw(C;Ctr) of 43(-1;-5) dB at 250 kg/m<sup>3</sup> density,** measured in sound insulation partitions (University of Aristotle, Thessaloniki, Greece).



**ISOSOUND** does not produce fire particles and prevents flame propagation. It provides safe heat properties and is recommended as the ideal choice for residential areas and public buildings.

For more information,  
please visit our website  
by scanning the QR Code



# ACCESSORIES

## Solutions for Perfect Results



### ISOGLOUE®

**ISOGLOUE** is a solvent based contact adhesive designed specially for uniform and safe seam bonding of flexible insulation materials like elastomeric pipes and sheets applied on high temperature lines.

Suitable for application on pipes and tanks with service temperatures up to **+150°C**.



### ISOCLAMPS

**ISOCLAMPS** are used to eliminate insulation gaps and reduce the possibility of thermal bridge creation, during the support of process insulated tubes (made by collar or metal bracket), in refrigeration or heating installations.

They are perfect for applications where the temperature is between **-45°C** to **+105°C**.



### ISOTAPE®

**ISOTAPE:** complete range consisted of insulation self-adhesive tape, PVC, Solar Polymer and Aluminum tapes, specially designed to be used together with ISOPIPE insulation products, thus easily completing every installation.

**ISOTAPES** have a long lifetime and are available in varying lengths and widths, in Silver, Black and White colour.



### ISOCOVER

**ISOCOVER** is a special insulation protection covering against UV Radiation and mechanical damages.

**Ideal for confined working areas and for already installed pipe systems**, where insulation cannot be threaded and must be clamped around existing pipes. Available in **SOLAR, HP, UV PLUS** and **HEAVY DUTY (HD)**.

For more information,  
please visit our website  
by scanning the QR Code





# New Free User Friendly App for Tablet & Mobile Devices

**ISOPIPE Insulation Calculator** has been developed to offer exact measurements for Certified Insulation, NBR and EPDM based.

Through the Program's Calculations the user receives many recommendations, but also the techno-economic choice towards energy savings.

Available in Google Play and App Store.

Also available for Online application use via our website.



**ISOPIPE**  
**Insulation Calculator**



**ISOPIPE**® S.A.  
[www.isopipe.eu](http://www.isopipe.eu)

## GREECE

### Head Office

Nafpliou & Daskalogianni  
144 52 Metamorfosi Attikis

### Plant

73rd km Nat. Road Athens - Lamia  
341 00 Ritsona Halkida

T.: +30 210 28 28 603  
F.: +30 210 28 19 210  
E.: [export@isopipe.gr](mailto:export@isopipe.gr)

## SPAIN

### Barcelona

Transloan Cataluña S.L.  
c/ Menorca 43-45,  
08192 Sant Quirze del Vallès,  
Barcelona

### Madrid

Alman Global Logistics (AGL)  
c/ Francisco Rabal 9  
Modulo 2 P I Ginesa,  
28806 Alcalá de Henares, Madrid

T.: +34 93 879 1195  
F.: +34 93 879 1313  
E.: [pedidos@isopipe.es](mailto:pedidos@isopipe.es)