



DO YOUR JOB EASIER, FASTER AND BETTER



English



Tools HVACR Pros Trust

ONE SYSTEM DOES IT ALL JOB LINK® SYSTEM

Link Your Tools

**Job
Link**

Our Job Link® system application has new features that make working without interruptions even easier and more efficient. From viewing measurement results to processing work orders, the Job Link app doesn't miss a thing.

- Easy and fast wireless connection of measuring devices;
- Visualization of all measurement results;
- Link your jobs;
- Search, sort, and exchange jobs;
- Easily generate customer reports instantly with a personalized and professional look and feel;
- Efficient planning of work orders;
- Download the Job Link® system.



DIGITAL MANIFOLDS



PSYCHROMETER



PIPE CLAMPS



MANOMETER



CLAMP METERS



VACUUM GAUGE



PRESSURE PROBES



LEAK DETECTOR



REFRIGERANT SCALE



App for
iOS



App for
Android

TABLE OF CONTENT

Analysis and detection	4
Recovery and vacuum pumps	6
Accessories	9

OVERVIEW

Fieldpiece Instruments was founded in the United States in June 1990 to develop special tools for HVACR professionals. Fieldpiece focuses on making the job for HVACR professionals easier, faster and better. Our network of instruments is designed to measure just about everything a technician needs to diagnose diagnose and repair HVACR systems.

Today, Fieldpiece is the leading innovator of the HVACR industry of instruments in these product categories:

- Vacuum and Recovery
- Leak detection
- Electrical
- High and low temperature analysis
- Temperature/Relative humidity
- Air Flow
- Accessories

HVACR professionals trust Fieldpiece to have the right tools to help them do more. Every day.



DR82EU

Fieldpiece offers state-of-the-art refrigerant leak detectors.

- High-quality infrared sensor;
- 1g/year sensitivity;
- Automatic or manual recalibration available;
- Large LCD backlit screen.

The DR82 Refrigerant Leak Detectors help technicians quickly find and pinpoint leaks due to its highest possible sensitivity.



DR58EU

Fieldpiece offers a one-of-a-kind design with the Heated Diode Refrigerant Leak Detector.

- 1g/year sensitivity;
- User replaceable diode sensor;
- Large LCD display;
- Responds to tracer gas, N₂H₂.

With our Heated Diode Refrigerant Leak Detectors, you can easily pinpoint the smallest leak in an HVACR unit in an instant.



DRX3

Fieldpiece offers state-of-the-art refrigerant leak detectors.

- ATEX Rated;
- Sensor Type: Heated diode;
- 1g/year sensitivity;
- Responds to tracer gas, N₂H₂
- Automatic or manual recalibration available.

With our ATEX- Rated Heated Diode Refrigerant Leak Detector, you can easily pinpoint the smallest leak in an HVACR unit in an instant.



JL3KH6INT

With our System Charge and Air Kit, you can take a full system snapshot in an instant.

- All tools have 300m wireless connection to the Job Link® app;
- The kit consists of 2 JobLink® pressure probes, 2 Job Link® temperature clamps, and 2 Job Link® psychrometers;
- All probes have an easy-to-use indicator switch (red/blue);
- Automatic on-board datalogging is available on each tool.

Our System Charge and Air Kit reduces service check times, ensuring you can do more in less time.



SC260INT | SC480INT | SC680INT

Electrical clamp meters.



SC260INT

The SC260INT is powerful for both big and small jobs.

- Perfect fit for small jobs because of its compact design;
- Magnetic hanger ensures handsfree testing;
- True RMS & Non Contact Voltage;
- Ability to measure temperature.

The SC260 is the easy to take to all jobs because of its compact nature and powerful presence.



SC480INT

The SC480INT is designed to be at the heart of your electrical measurements.

- 300m wireless range and Job Link® connection;
- 3 Phase rotation;
- Ability to measure power in kW;
- True RMS & Non Contact Voltage.

Our Dual Display Clamp Meter ensures you only need one meter to see every electrical measurement you need.



SC680INT

Our SC680INT is packed with everything you need to install, service, and troubleshoot any HVACR system.

- Job Link® integration with a 300m wireless range;
- Rotatable head;
- Ability to do power measurements, True RMS, AC/DC Amps & Non Contact Voltage;
- Build-in Dual Temperature.

The SC680INT is specifically designed for the HVACR industry so your electrical measurements are fast and accurate when you need them most on the job site.

MR45INT | MR53INT

Our MR45INT and MR53INT are the highest performance recovery machine in its class on the market.

- ATEX Rated (MR53)
- Automatically adjusts motor performance to gain time;
- Lightweight design;
- A2L compatible (MR45INT)
- A3 and A2L compatible (MR53INT);
- Easy to use because of the single dial valve and LCD display.

Our Recovery Machines ensures that you can work as efficiently and as quickly as possible at every job.

✓ **A3|A2L**



HOSES

Fieldpiece offers a premium hose set to use with the Fieldpiece products.

- Small hose fittings to access tight spaces;
- Long-term reliability;
- Available in both 1/4" and 5/16" sizing
- Includes three 1/4" ball valve hoses;
- Compatible with A1 and A2L refrigerants.

With the Fieldpiece hoses, you can easily access tight spaces because of the robust and compact design, so taking measurements is possible anywhere on the system.

SR47INT

Fieldpiece offers robust and high performing Refrigerant Scales.

- 300m wireless range and up to 114kg;
- 10g resolution;
- 3 ways to view: handheld remote, Job Link® app and wireless manifold;
- Robust weatherproof rating (IP54).

The SR47INT is an easy-to-use Refrigerant Scale to do system charge and recovery of refrigerant easier, faster, and better at all job sites.



SM382VINT | SM482VINT

Fieldpiece offers state-of-the-art digital manifolds.

- Supports A1, A2L and A3 refrigerants;
- Integrate with Job Link® tools;
- Temperature compensated system tightness test;
- Weather resistant heavy duty design.

Our Digital Manifolds can work with complex HVACR systems and integrate with the Job Link® tools, ensuring you have all the information you need in the palm of your hand.

✓ **A3 | A2L**





VP67 | VP87EU | VPX7

Fieldpiece offers high performance vacuum pumps that cut evacuation time.

- Lightweight and portable design;
- RunQuick® Oil Change System to ensure quick oil change;
- 4 in-line ports for easy hose connection;
- 15 microns ultimate vacuum;
- A2L compatible;

Our Vacuum Pumps easily and quickly performs a vacuum on a system to cut evacuation time.

VP633 | VP833 | VPX833

Fieldpiece offers high performance A3/A2L vacuum pumps that cut evacuation time.

- ATEX Rated
- Lightweight and portable design ;
- RunQuick® Oil Change System to ensure quick oil change;
- 4 in-line ports for easy hose connection;
- 15 microns ultimate vacuum;
- A3 and A2L compatible;

Our ATEX Rated Vacuum Pumps have been designed to easily and quickly perform a vacuum on a system.



VACUUM HOSES

Fieldpiece offers a premium hose set to use with the Fieldpiece products.

- Small hose fittings to access tight spaces;
- Long-term durability;
- 3/8" fittings and 3/8"x 1/4" fittings;
- Compatible with A1 and A2L refrigerants.

The Fieldpiece vacuum hoses have state-of-the-art long-term durability, ensuring you can always do your job easier, faster, and better.



MG44

Fieldpiece offers reliable and accurate Wireless Vacuum Gauges.

- 300m wireless range;
- 60 bar overpressure;
- 3 ways to view measurements: Job Link® app, Digital Manifold, and the MG44 screen.

Our Wireless Vacuum Gauge gives you accurate and fast measurements as a stand-alone tool, and performs at a high level in combination with the other Job Link® tools as well.

TOOL BAGS

Fieldpiece offers rugged, flexible, and compact inspection and service tool bags.

- Rugged, elevated tool rack;
- Magnetic tray for easy storage;
- Large padded pockets;
- Compact and rugged design.

Our service bags have been specifically designed to perfectly store and fit all of your Fieldpiece tools you need on-site.



VCRTS

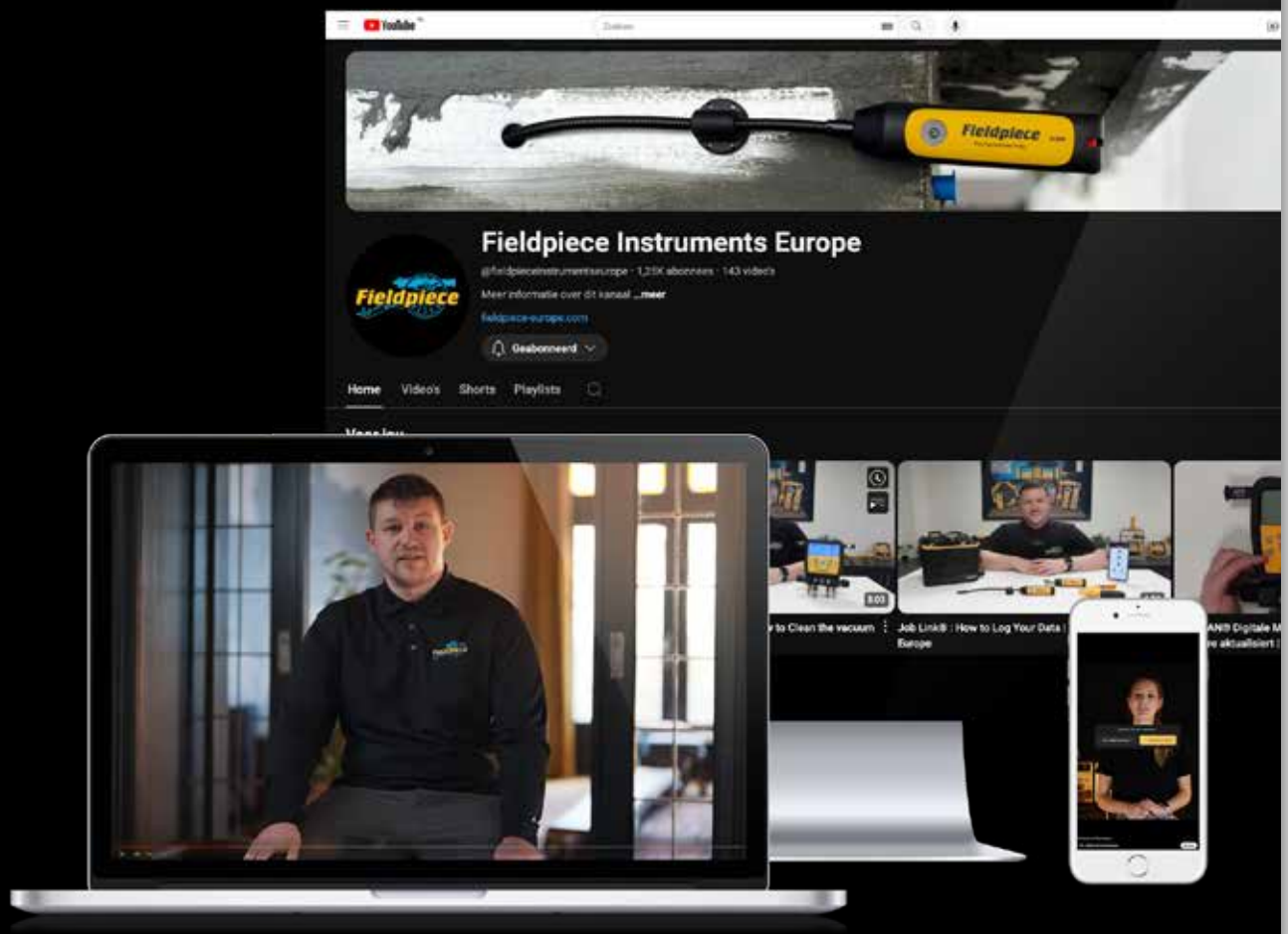
Fieldpiece offers versatile and rugged VCRTs to help you do your job easier, faster, and better.

- Integrated sight glass to verify engagement of valve core;
- Swappable 1/4" and 5/16" service port fittings;
- Integrated dual valve to protect test gauges and use multiple hose lines;
- Integrated comfort spinner for easier removal and insertion;
- Vacuum-rated to 20 microns;
- A2L compatible.

With our VCRTs you can tackle any HVACR with efficiency, accuracy, and comfort all while always ensuring the engagement of the valve core.

FIELDPIECE ON YOUTUBE

SUBSCRIBE TO OUR CHANNEL

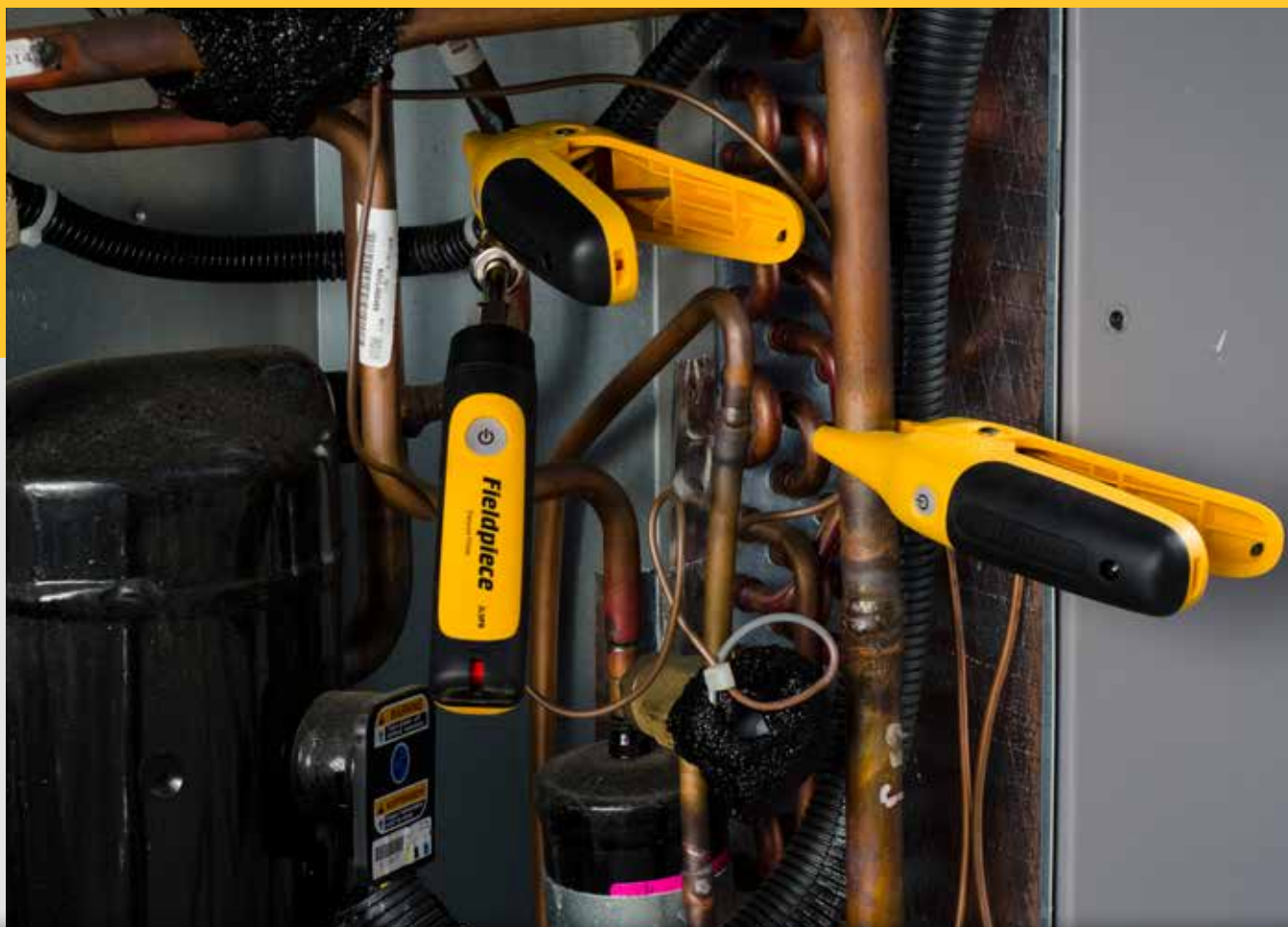


From “How To” to “Did you know” videos, our YouTube channel has many different videos for you to discover. The videos help you to get to know your Fieldpiece product better and learn all about the awesome features it comes equipped with so you can do your job easier, faster and better.



All our videos are subtitled so every technician has access to the cool tips provided on the YouTube channel.

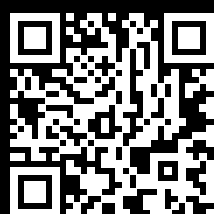
Scan the QR code to go directly to our YouTube channel.



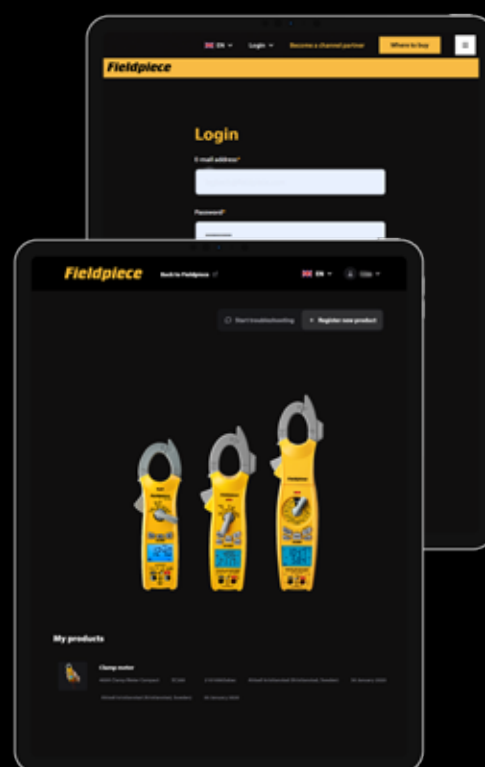
OUR FIELDPIECE, YOUR FIELDPIECE, MY FIELDPIECE!

We proudly introduce: MyFieldpiece. A digital portal where you can register your Fieldpiece products and easily access all information regarding your tools, such as 'how to' videos or manuals.

You can also use this portal to directly report any problems that you might experience and get the support you need.



Register today at
my.fieldpiece-europe.com



Fieldpiece

GET IN TOUCH WITH FIELDPIECE

Whether you have a question or a request, you can always reach out to us. Please find our contact details below.

Fieldpiece Instruments B.V.

Edisonstraat 65
7006 RB Doetinchem
The Netherlands

Fieldpiece Instruments Ltd

Newton House, Northampton Science Park
Kings Park Road, Moulton Park Industrial Estate
Northampton, England NN3 6LG

europe@fieldpiece.com

