

Pellet Boilers

# KHT-STREAMFIRE

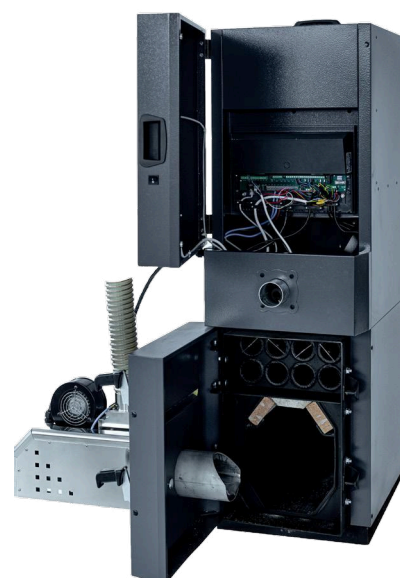


## MODERN AND ECO-FRIENDLY HEATING DEVICES

Perfect for comfortable home heating.

They combine efficiency, cost-effectiveness, and care for the natural environment.

- Nationwide boiler service coverage
- Boilers adapted to the "Clean Air" program and listed on the ZUM register
- 5-year warranty
- Energy class A+



Ease of  
installation and  
operation



Fuel efficiency



Automatic ash  
removal systems



High energy efficiency

Our pellet boilers meet all European emission standards, making them eco-friendly and sustainable.

Polska, 48-130 Kietrz, ul. Okrzei 21 ■ +48 723 004 005 ■ [biuro@kht-group.com](mailto:biuro@kht-group.com) ■ [www.kht-group.com](http://www.kht-group.com)

# KHT-STREAMFIRE



**KHT-STREAMFIRE** pellet boilers are advanced heating devices that combine efficiency, cost-effectiveness, and environmental friendliness. They enable comfortable heating of homes and commercial buildings while caring for the natural environment. High-quality craftsmanship, ease of use, and modern technical solutions make them the ideal choice for anyone looking for an efficient and eco-friendly heating system.

The modern burner used in our boilers does not require tools for maintenance, such as replacing the igniter or photoelectric sensor.

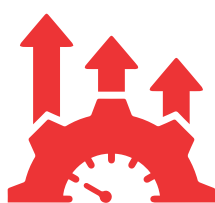
Servicing the burner is extremely simple and takes no more than 10 minutes. Removing the burner does not require unscrewing it from the front boiler door. Modern clamps allow the burner to be detached in less than three minutes.



1

## Ease of Installation and Use

The design of KHT-STREAMFIRE boilers ensures simple installation and intuitive operation.



2

## Fuel Efficiency

These devices consume optimal amounts of pellets, resulting in lower operating costs.



3

## Automatic Ash Removal Systems

Reduce the need for frequent boiler cleaning, making daily operation easier.



4

## High Energy Efficiency

Burners from the Eco Palnik brand ensure maximum utilization of the energy contained in the pellets, translating into high thermal performance.

Let me know if further adjustments or refinements are needed!

**KHT-STREAMFIRE** boilers are modern heating devices designed for pellet combustion. They are available in various construction variants and power ranges to meet different heating requirements.

The boiler design consists of the following modules:

1

#### Heat Exchanger

Ensures efficient heat transfer between exhaust gases and heating media.

2

#### Pellet Hopper

Used for fuel storage, ensuring continuous operation of the boiler.

3

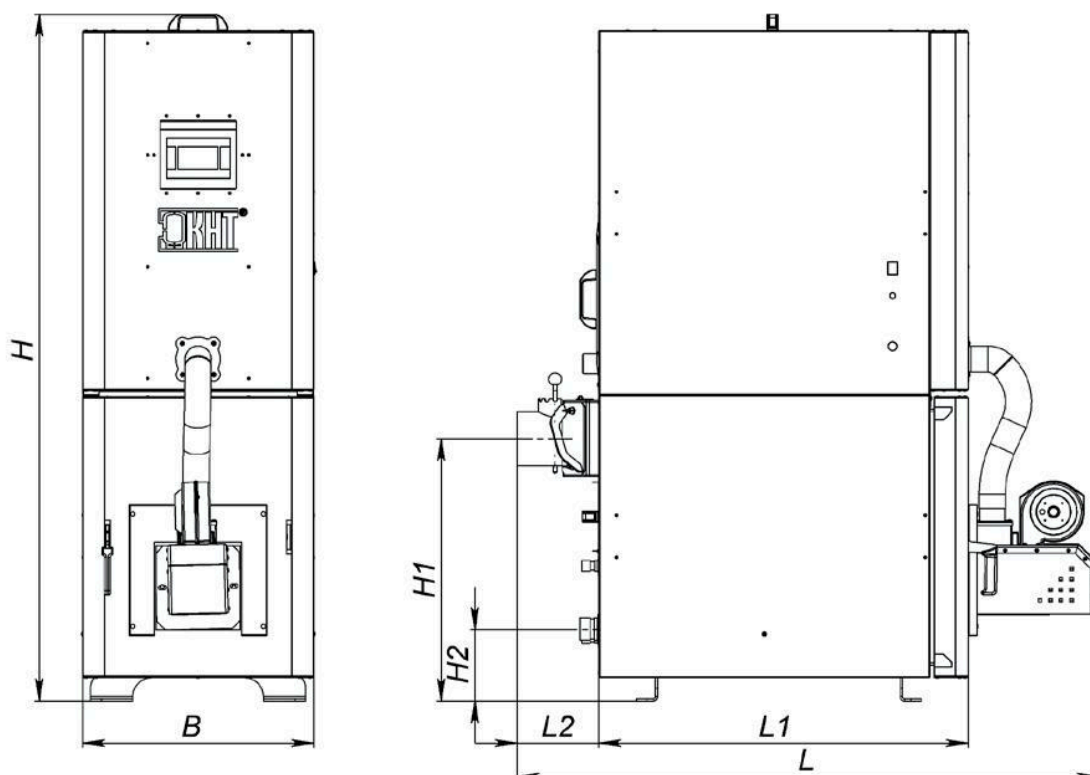
#### Burner with Automatic Ash Removal System

The Eco Palnik brand provides high combustion efficiency and minimal contamination of the combustion chamber.

4

#### Controller

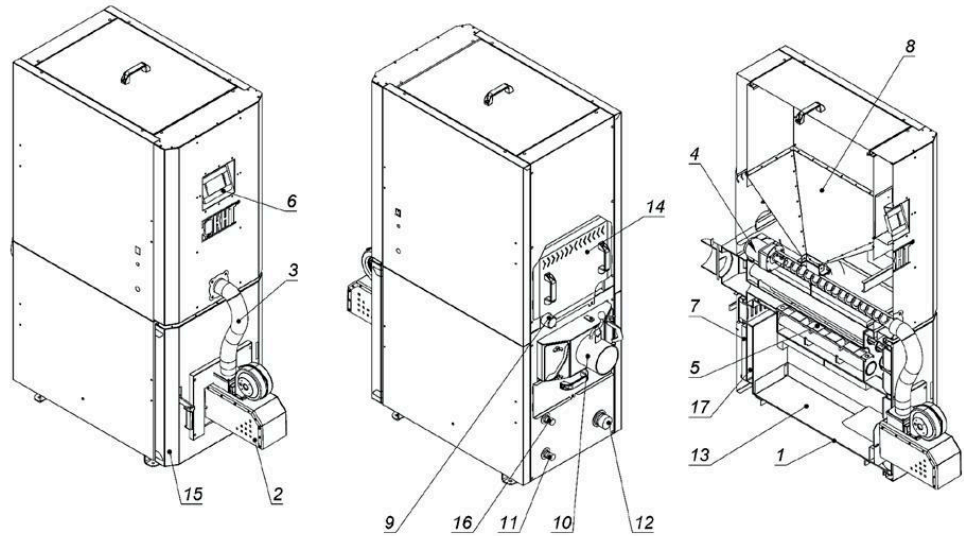
Enables precise management of boiler operations, adjusting parameters to current needs.



	STREAMFIRE 10		STREAMFIRE 15		STREAMFIRE 20	
L	1143	mm	1425	mm	1590	mm
L1	652	mm	860	mm	875	mm
L2	122	mm	202	mm	195	mm
H	1331	mm	1331	mm	1627	mm
H1	468	mm	495	mm	622	mm
H2	120	mm	115	mm	170	mm
B	415	mm	556	mm	630	mm

## Diagram of Boiler Components and Connections

1	HEAT EXCHANGER
2	BURNER
3	SPIRO PIPE
4	GEAR MOTOR
5	SMOKE TUBES
6	CONTROLLER
7	SERVICE ACCESS TO THE HEAT EXCHANGER
8	PELLET HOPPER
9	SUPPLY CONNECTION
10	FLUE PIPE
11	DRAIN VALVE CONNECTION (ONLY FOR 20KW)
12	RETURN CONNECTION
13	ASH DRAWER
14	REAR COVER
15	HEAT EXCHANGER DOOR
16	SAFETY VALVE CONNECTION



**KHT-STREAMFIRE** boilers can operate with various heating media, including:

**1**

### Glycol

Provides resistance to low temperatures, which is especially important in installations exposed to freezing conditions.

**2**

### Water

A commonly used heating medium in central heating systems.

DEVICE PARAMETERS	UNIT	KHT STREAMFIRE 10	KHT STEAMFIRE 15	KHT STREAMFIRE 20
ENERGY EFFICIENCY CLASS	—	A <sup>+</sup>	A <sup>+</sup>	A <sup>+</sup>
RATED HEAT OUTPUT	kW	9,76	15	20
ENERGY EFFICIENCY COEFFICIENT	—	115,49	116,65	116,16
SEASONAL ENERGY EFFICIENCY OF SPACE HEATING	%	78,25	79,14	78,7
SPECIAL PRECAUTIONS DURING INSTALLATION, MOUNTING, OR MAINTENANCE OF THE DEVICE	BEFORE INSTALLATION, COMMISSIONING, OR MAINTENANCE OF THE DEVICE, THE RECOMMENDATIONS OUTLINED IN THE USER MANUAL PROVIDED BY THE MANUFACTURER MUST BE FOLLOWED.			