



INDUSTRIAL

PRODUCT LINE CARD



ABOUT SENSATA

Sensata is a global industrial technology company with 100+ years of experience in mission-critical design and innovation of sensor-rich solutions that create insights for our customers.

WHY SENSATA

We have a deep knowledge and understanding of a broad range of industrial applications and we offer advice and support to help you select the right product for your application. All our products are of exceptional quality. We take pride on the flexibility we drive in our operations to customize products at a global scale.



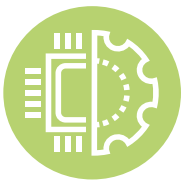
Helping our customers and partners safely deliver a cleaner more efficient and connected world.



Addressing emerging Megatrend technology needs



Offering a global engineering and manufacturing footprint



Providing sensing expertise over multiple parameters



Customizing solutions through flexible and adaptable technology

By the Numbers

2023 Revenues: \$4B

Americas 45%

Europe 26%

Asia 29%

47,000+

**different products
manufactured**

1.1B

**devices shipped each year,
each highly engineered**

21,000

employees worldwide

16

**countries with business
centers and manufacturing
sites**

OUR BRANDS

BEI SENSORS

crydom

GIGAVAC

KAVI
Pressure Sensors

NEWALL

cynergy3

AIRPAX

KLIXON

BEI KIMCO

DeltaTech
CONTROLS

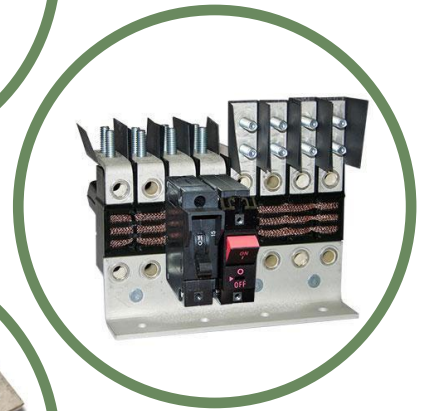
CIRCUIT BREAKERS

Our broad portfolio includes highly configurable, customizable, circuit breakers based on precise hydraulic-magnetic technology. GFCI and ELCI Modules that when coupled with our Circuit Breakers provide both protection to equipment and electrical shock in high-risk environments, such as Marine and Power Generation.

Modular power distribution modules specifically designed to be compatible with our Circuit Breakers, facilitate the design and installation for your specific application.

APPLICATIONS

- Rail
- Telecom/Datacom
- Military and Defense
- Construction Machinery
- Medical Equipment



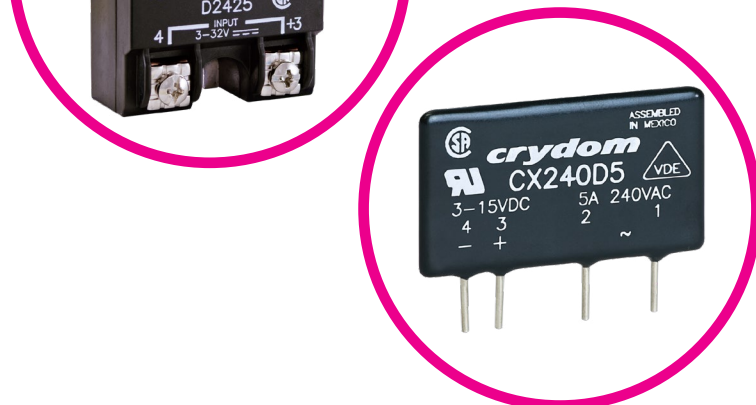
SOLID STATE RELAYS

Sensata is a market leader with the widest range of off-the-shelf solid state relays and contactors, as well as custom-designed solid state switching solutions.

Our Solid State Relays can be used to control almost any type of load in demanding heating, lighting, motion and power control applications that can benefit from the many advantages that SSRs have over traditional electromechanical relays, such as extended life expectancy, faster switching speed, lack of acoustical noise, higher resistance to shock and vibration, among others.

APPLICATIONS

- Professional Cooking Ovens
- Laboratory Ovens
- Warehouse Lighting
- Professional Coffee Makers
- Plastic Machinery

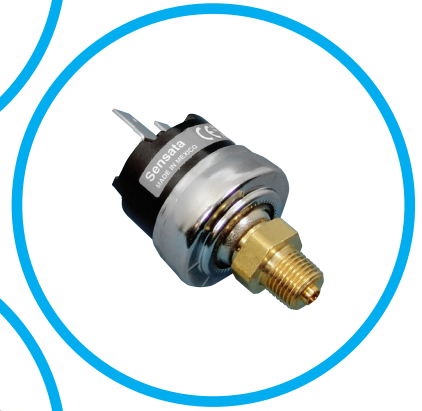


PRESSURE SENSORS & SWITCHES

Broad portfolio of pressure products based on a variety of proven technologies. From pressure sensors that offer ranges from 1 inch H₂O to 10,000 psi or vacuum up to 700 bar, to our highly reliable pressure switches with a wide range from 0 – 2000 psi or 0 – 140 bar, our pressure solutions provide the configurability and performance needed for demanding industrial applications.

APPLICATIONS

- Air Conditioning
- Refrigeration
- Pumps
- Heating (Boilers)
- Air Compressors



MOTOR PROTECTORS

We offer the newest in protection devices, such as breakthrough low-power combo starter protectors, as well as some extremely long-lived products such as the 90-year-old ¾-inch Klixon motor protector, a standard around the world.

APPLICATIONS

- White Goods
- HVAC
- Generators



LEVEL AND FLOW SENSORS & SWITCHES

Level Sensors and Flow Switches are used in a wide variety of industries and applications. Usually the aim is to avoid overflow that would cause potentially hazardous situations, so accuracy and reliability are of paramount importance.

APPLICATIONS

- Chemical Process
- Food & Beverage
- Oil & Gas



TEMPERATURE SENSORS & SWITCHES

Sensata offers a wide array of reliable and accurate temperature sensors and switches in a variety of packaging options. No matter how extreme the thermal environment — from -40°C to 1,200°C — we have the temperature sensors to optimize your design's performance.

APPLICATIONS

- Commercial Food Equipment
- HVAC



POSITION SENSORS & ENCODERS

Our comprehensive Encoders and Position Sensors line includes incremental and absolute encoders, hall effect sensors, rotary and linear potentiometers as well as inclinometers and draw wire solutions. Reliable and rugged products that are designed for use in standard industrial to heavy duty and hazardous area applications.

APPLICATIONS

- Motor Feedback
- Lift Trucks
- Oil & Gas Rig Equipment
- Wind Turbines

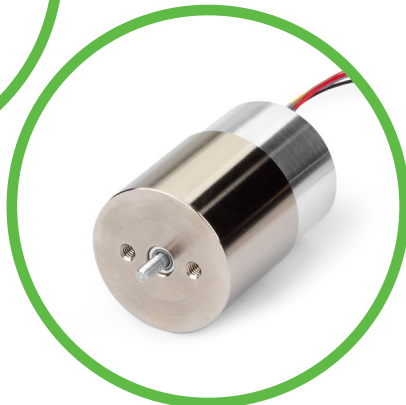
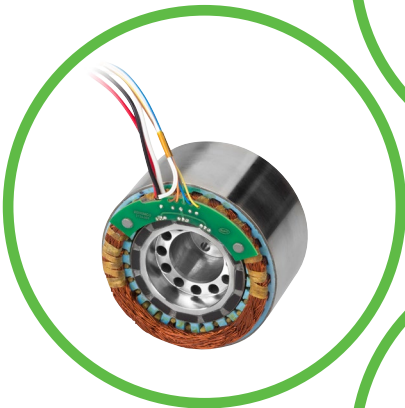


MOTORS & ACTUATORS

Precision Linear and Rotary Voice Coil Actuators (VCAs) and Brushless DC Motors (BLDCs) for producing, sensing and controlling motion in the medical, industrial, aerospace and defense markets. Proprietary magnetic design technologies are used to produce custom products where performance, precision, and reliability are critical.

APPLICATIONS

- Ventilators
- Unmanned Aerial Vehicles (UAVs)
- Downhole Drilling



OPERATOR CONTROLS

Sensata designs and manufactures advanced operator controls and integrated systems such as Lift Control Systems, Motor Controllers, Joysticks, Grips, Rockers, and Switches. These products come with embedded diagnostics meeting strict product safety standards in Material Handling and Mobile Elevating Work Platforms that simplify operation, increase reliability, and improve efficiency.

APPLICATIONS

- Lift Trucks
- Mobile Elevating Work Platforms
- Telehandlers
- Cranes
- Hoists



HIGH VOLTAGE & REED RELAYS

Sensata brings decades of experience in the engineering, manufacturing, testing, and application of High Voltage and reed relays designed for a variety of use cases. High voltage relays are available in DC and RF applications with a variety of voltages from 2- 100kV, while our reed relays are accurate, durable, reliable, and deliver performance that more than matches up to customer specifications.

APPLICATIONS

- Renewable Energy
- Battery Packs
- Medical Applications





CONTACT US

Regional head offices:

United States of America
Sensata Technologies Attleboro, MA
Phone: 508-236-3800

Netherlands
Sensata Technologies Holland B.V. Hengelo
Phone: +31 74 357 8000

China
Sensata Technologies China Co., Ltd. Shanghai
Phone: +8621 2306 1500

Copyright © 2024 Sensata Technologies, Inc. 02/2024



sensata.com

