



ENG



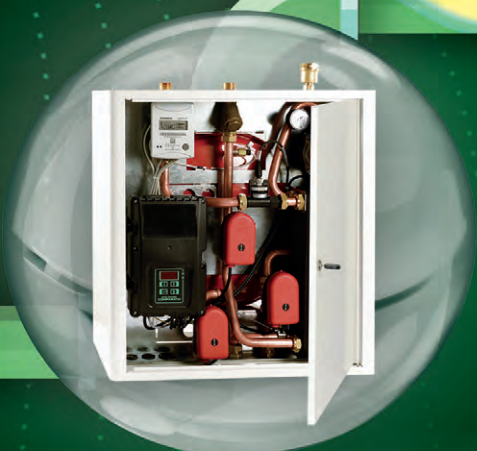
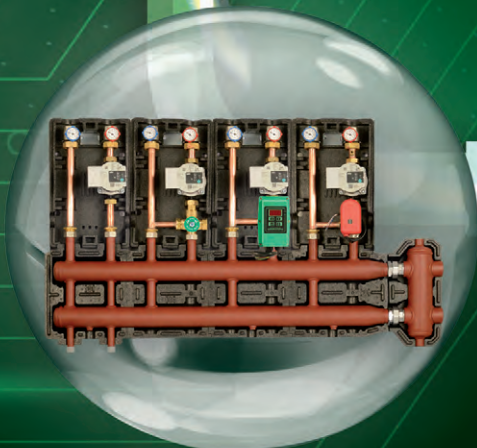
Hydrothermal Systems

**COMPARATO®**

MADE IN ITALY

*since 1968*

- Motorised Valves
- Components for Central Heating Systems
- Hydraulic Interfaces



**Reliable**  
by nature.

**EXCELLENCE**  
MADE IN ITALY

# MOTORISED VALVES

## MIX RANGE



## SINTESI RANGE

## DIAMANT 2000



## MICRODIAM



## PRO RANGE

**COMPARATO** motorised valves mainly for two fields of use: **HYDROTHERMAL SYSTEMS** and **INDUSTRY**. Moreover, **COMPARATO** has also developed a new range of high-tech multifunction actuators, **SMART PRO** range: high precision regulation, **Wi-Fi** or **Modbus** communication protocol, **Fail-Safe**, **COMPARATO CLOUD** and configurable settings.

## MOTORISED VALVES • HYDROTHERMAL SYSTEMS

**SINTESI**, **Diamant 2000** and **Microdiam** motorised valves can carry out two actions: **ON/OFF** interception or diverting operation with 2-point or 3-point control (according to the thermostat or to the type of system) and **MODULATING OPERATION** for regulation and balancing with 3-point control or proportional control with powered-on or current mode piloting. We have also developed **SINTESI SMART** with **Modbus** communication protocol.

Power supply 24-110-230V 50/60Hz or 12-24V DC, ball valves from 1/4" up to 1" (while the new range of regulating ball valves can go up to 2"), PICV or 6-way valves.

## MOTORISED VALVES • INDUSTRY

**PRO Range** consists of **Diamant PRO** 11 Nm, **Compact PRO** 22 Nm and **Universal PRO** 40 Nm. These actuators have been designed for satisfying all needs of industrial plants, thanks to their IP67 or IP68 class protection and they are characterised by a wide variety of options making the actuators extremely versatile. Power supply available: 24V-110V-230V 50/60Hz or 12V-24V DC. Ball valves from 1/4" up to 4" available in different materials (brass, stainless steel, cast iron, pvc, etc), or butterfly valves. A special focus is placed on **WINERY SECTOR**, with configured motorised valves on the basis of the final application.

Pneumatic actuators and actuators up to 350Nm complete the range.



# HYDRAULIC INTERFACE UNIT

**COMPARATO** has always been at the forefront of **ENERGY SAVING** and offers a wide range of interface units for the direct metering and hydraulic interfaces for the management of alternative energy sources.

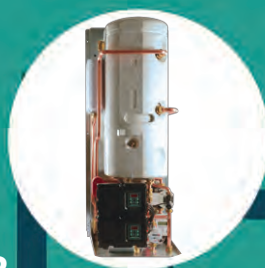
**BITHERM**



**DIATECH PDC**



**FUTURA AC 70L**



**ECOKAM R**



**CONTER**



## HIU

A constantly evolving range, able to grant independence but at the same time to keep all benefits linked to a central heating system. We always provide a solution to all requests, as we offer the possibility of having a custom product realised according to the plant's needs. The range is completed by **Conter** (for metering) and **Diatech** and **Futura** (for metering and DHW production).

## FUNCTIONING

Thermal plant provides the heating and the distribution of the thermo-vector fluid by using interface units installed in each housing unit. The direct metering system measures, visualises and communicates the real amount of withdrawn energy.

## POINTS OF STRENGTH

- Management independence
- Allocation of costs according to real consumptions
- Safety guaranteed thanks to the absence of combustion inside the housing unit
- Energy saving with reduced costs
- Reduced emissions to air

## INSTALLATION

HIUs can be: wall hanging with painted casing, built-into wall with painted cover, floor standing or available in versions for technical premises. Thanks to templates and stub pieces for meters, it is possible to carry out the flushing of the plants before installing delicate components.

## PLUG & PLAY • IMMEDIATE REPLACEMENTS

The ability to produce according to customer specifications in terms of both functionality and size allows **COMPARATO** to offer modules that are fully interchangeable with existing ones so that replacements for upgrading existing systems can be carried out quickly and conveniently.

## ECO RANGE

**ECO Range** was created to integrate between traditional energy sources and alternative sources such as solar thermal, thermo-fireplaces, wood or pellet stoves, etc. in an easy and quick way.

**Ekokam:** fireplace-boiler interface (power separation).

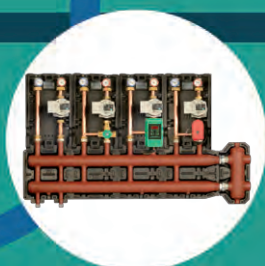
**Ecosan:** instantaneous DHW production to be combined with technical storage. HP sized versions available.

## HYDRAULIC UNITS

**COMPARATO** manufactures pre-assembled hydraulic kits for temperature regulation of **Ecopool** pools or for the separation of **Sep-Kit** systems.

# DISTRIBUTION SYSTEMS

PUMP UNIT ▶



◀ UNDER-BOILER UNITS



▶ DIADEF MAGNETIC



▶ ROBOT WELDING MACHINE



◀ CUSTOM PRODUCTS



**COMPARATO's systems** comprise all the products that enable the distribution, cleaning and de-aeration of the heat transfer fluid allowing heat to be supplied to the unit.

## DISTRIBUTION SYSTEMS

**COMPARATO** offers the possibility of managing thermal zones. **Pump Units** to be installed in the heating plant, **Under Boiler Units** which can be installed directly under the boiler, and the ultra-compact **Compact System**, which can be used in the power station or under the boiler. For all distribution systems, you have the possibility to choose any combination between **direct zones**, **mixing fixed-point zones**, **mixing electronic zones** or **mixing modulating zones**. **COMPARATO** also offers pump units for direct metering.

## CENTRAL HEATING SYSTEMS

The traditional range of 140 mm interaxis manifolds has been joined by **Diacol 125** range with 125 mm interaxis, designed to be perfectly matched to pump units. Available with male threaded connections (3/4" and 1") or female swivel connections (1" and 1 1/4"), the manifolds can be completed with high-performance modular insulation. In addition, the company offers **Diacom** hydraulic separators, **Diadis** 3-circuit independent hydraulic separators, **Diadef** deposit separators (traditional or hydro-cyclonic with magnet), **Diasep** inline or angle air separators, **Diacop** circulator manifolds, **Diafil** threads and INAIL device holders. The range is completed by **Diasol**, iron ejectors for single-pipe heating systems, **Dias** manifolds in **AISI 316** for drinking water, and INAIL device holders.

## SPECIAL WORKS

In addition to standard production, **COMPARATO** has become renowned over the years thanks to its great flexibility and the possibility of constructing any customised component, both in carbon steel and stainless steel: a dedicated department handles the numerous **non-standard** requests with professionalism and expertise, a process that starts from the installer's sketch or a technical office design and arrives, through the construction drawing, to the quotation. The customer's requirements are supported by the company's know-how in order to give the product not only the specific characteristics, but also cost-effective construction, reliable functionality and fast execution.



## FAST DIVERTING MOTORISED VALVES FOR HEAT PUMPS

The range of **FAST DIVERTING VALVES FOR HP** is placed downstream of heat pumps for the diversion between heating system and domestic hot water storage. The technical features that make them suitable for this type of application are the **ultra-fast operating** times (up to 4 seconds per 90°), the three-hole full-pass ball that guarantees a **constant flow even during operation** and **zero leakage**.

HP RANGE ▶



◀ SMART PRO CLOUD RANGE



## MULTI-FUNCTION MOTORIZED VALVES

**COMPARATO** has implemented interesting functions within the **PILOT** and **SMART PRO** series actuators: **SMART** technology ensures maximum control precision, **FAIL-SAFE** consists of backup supercapacitors that allow emergency operation in the event of a power failure, and **DIRECT COMMUNICATION** via Modbus with BMS (Building Management Systems). In addition, SMART PRO is equipped with the Wi-Fi module that allows access to the actuator and the possibility of creating an advanced IoT infrastructure for remote control of the motorised valve via **COMPARATO Cloud**.

## MOTORISED MIXING VALVES WITH INTEGRATED ELECTRONICS

**MIX Range** guarantees temperature accuracy and extreme ease of use. Four versions are available.

- **FIXED-POINT** mixing valves
- **PLUS** mixing valves with Modbus communication. Option with high temperature weather compensation function, 0-10V voltage control of setpoint or fixed point
- **ANTI-LEGIONELLA** mixing valve for domestic water use with integrated thermal disinfection programme, Modbus communication and LegioTool software
- **PR** mixing valve for controlling radiant panel systems

MIX RANGE ▶



CLIMA HP ▶

## CUSTOM MOTORISED VALVES

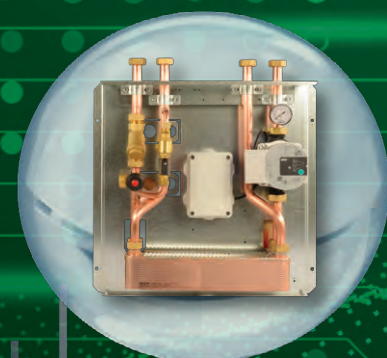
Characterised by the great flexibility of its products, **COMPARATO** is also able to meet special needs. Examples are the **ON/OFF** actuators for intercepting or diverting fluids according to programmed temperatures in **Clima** series or according to time intervals in **Crono** series, and **Clima HP** diverting valve for selecting the most convenient energy source between heat pump and boiler.

**EXCELLENCE**  
MADE IN ITALY





Distribution Systems  
**Compact System**



Hydraulic Separation  
**Sep Kit**



3-Circuit Hydraulic Separator  
**Diadis**

**Reliable by Nature** expresses **COMPARATO's DNA** and encapsulates a history spanning **over 55 years** through the pursuit of product quality to offer its partners the best solutions. This phrase also reflects our respect and care for the Nature that surrounds us, values that are now too neglected by a world in constant motion. This is why the image chosen by **COMPARATO** is reminiscent of **Mother Nature**: an elegant and refined woman, diving into today's world, where the search for domestic comfort needs to keep pace with **ECO-SUSTAINABILITY** and **ENERGY SAVING**.

**Reliable by Nature** is a concept born under the sign of innovation: **Mother Nature presents COMPARATO's products as the fruit born from the tree of technology.**

COMPARATO NELLO S.R.L. • VIALE DELLA LIBERTÀ • LOCALITÀ FERRANIA • 17014 • CAIRO MONTENOTTE



TEL : +39 019 510.371  
FAX : +39 019 517.102



[www.comparato.com](http://www.comparato.com)



[info@comparato.com](mailto:info@comparato.com)

